

INDEX TO DRAWINGS - ARCHITECTURAL

- 1 SITE PLAN, CAMPUS PLAN, DETAILS
- 2 BASEMENT PLAN, ELEVATOR DETAILS, COOLING TOWER & EXHAUST AIR ENCLOSURE DETAILS
- 3 FIRST FLOOR PLAN, DETAILS
- 4 SECOND FLOOR PLAN, DETAILS
- 5 ROOF PLAN & DETAILS ROOM FINISH SCHEDULE
- 6 EXTERIOR ELEVATIONS, WINDOW DETAILS
- 7 BUILDING SECTIONS, DOOR TYPES & DETAILS
- 8 WALL SECTIONS
- 9 WALL SECTIONS, DETAILS
- 10 STAIR SECTIONS, DETAILS
- 11 INTERIOR ELEVATIONS, DETAILS
- 12 INTERIOR ELEVATIONS, DETAILS
- 13 INTERIOR ELEVATIONS, DETAILS
- 14 FIRST FLOOR REFLECTED CEILING PLANS, & CLERESTORY WINDOW PLANS
- 15 SECOND FLOOR REFLECTED CEILING PLAN, CEILING DETAILS, SPECIALITY DOOR DETAILS
- 16 WINDOW DETAILS

STRUCTURAL DRAWINGS

- S1 FOOTING & FOUNDATION PLAN
- S2 PARTIAL FIRST FLOOR FRAMING PLAN, COLUMN SCHEDULE & SECTIONS
- S3 LOW ROOF FRAMING PLAN
- S4 SECOND FLOOR FRAMING PLAN
- S5 HIGH ROOF FRAMING PLAN
- S6 BEAM SCHEDULE & SECTIONS

MECHANICAL DRAWINGS

- M-1 SITE PLAN
- M-2 FIRST FLOOR PLAN - PLUMBING & HEATING
- M-3 SECOND FLOOR PLAN - PLUMBING & HEATING
- M-4 FIRST FLOOR PLAN - VENTILATION
- M-5 SECOND FLOOR PLAN - VENTILATION
- M-6 BASEMENT FLR. PLAN - PLUMBING, HEATING & VENT.

ELECTRICAL DRAWINGS

- E-1 PLOT PLAN
- E-2 BASEMENT PLAN - LIGHTING & POWER
- E-3 FIRST FLOOR PLAN - LIGHTING
- E-4 FIRST FLOOR PLAN POWER
- E-5 SECOND FLOOR PLAN LIGHTING
- E-6 SECOND FLOOR PLAN POWER
- E-7 RISER DIAGRAMS

DETAIL NUMBER LEGEND

7	DETAIL NUMBER	16A	ROOM NUMBER
9	SHEET NUMBER WHERE DRAWN	16A	DOOR NUMBER
3	DETAIL OR SECTION NUMBER	16A	HARDWARE GROUP
8	DIRECTION	16A	DOOR TYPE
1	SHEET NUMBER WHERE DRAWN	16A	

MATERIALS LEGEND

[Symbol]	CONCRETE	[Symbol]	STEEL
[Symbol]	BRICK	[Symbol]	BLOCKING
[Symbol]	CONCRETE BLOCK	[Symbol]	FINISH WOOD
[Symbol]	PLASTER	[Symbol]	PLYWOOD
[Symbol]	RIGID INSULATION	[Symbol]	GRANITE
[Symbol]	STEEL STUDS & PLASTER		

GRADING LEGEND

34.0'	EXISTING ELEVATIONS	38'-8"	NEW ELEVATIONS
-32-	EXISTING CONTOURS	-35-	NEW CONTOURS

INDICATES LOCATIONS OF HOUSES & GARAGES PREVIOUSLY REMOVED & HIGH SURFACED AREAS (CONC WALKS, DRIVES, PATIOS, BITUMINOUS), LIGHTS & POLES

TREES TO REMAIN TREES TO BE REMOVED

1039' 90", 1039' 6", 38' 6", 39' 5", ARE ALL EQUAL IN VALUE

ALL INFORMATION ON THIS SET BETWEEN SHEETS 16A AND 16B IS A CONTINUATION OF THE INFORMATION ON SHEET 16A. THE INFORMATION ON SHEET 16B IS A CONTINUATION OF THE INFORMATION ON SHEET 16A. THE INFORMATION ON SHEET 16C IS A CONTINUATION OF THE INFORMATION ON SHEET 16B.

I HEREBY CERTIFY THAT THIS PLAN, SPECIFICATION OR REPORT WAS PREPARED BY ME OR UNDER MY DIRECT SUPERVISION AND THAT I AM A DULY REGISTERED ARCHITECT UNDER THE LAWS OF THE STATE OF MINNESOTA.

DATE 7-22-73 REG. NO. 22822

DATE 7-22-73 REG. NO. 22822

ADMINISTRATION BUILDING ST. CLOUD STATE COLLEGE

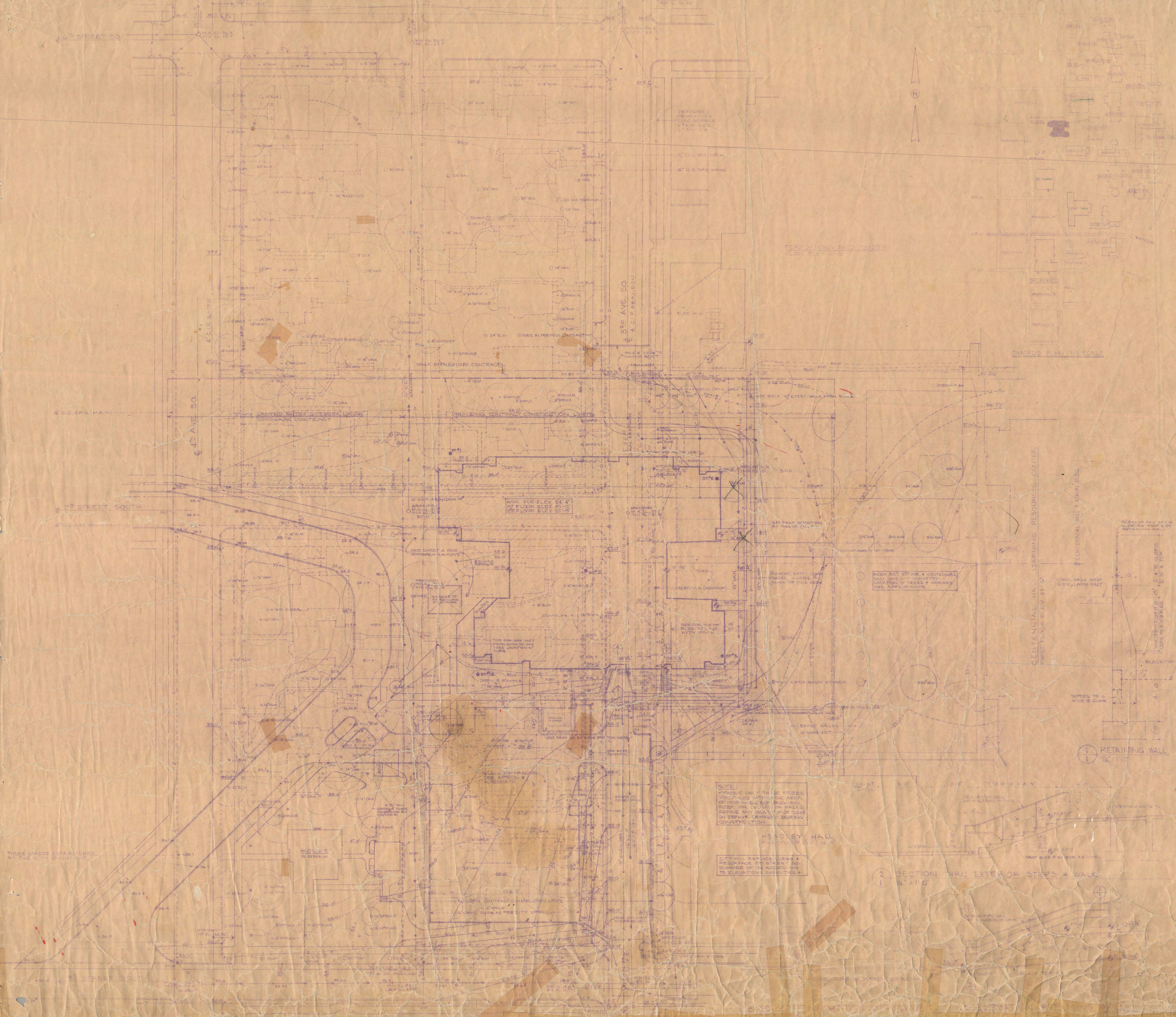
TRAYNOR, HERMANSON & HAHN ARCHITECTS INC. ST. CLOUD, MINNESOTA

STRUCTURAL ENGINEERS: JOHNSON & SHILMAN, INC. MPLS., MINN.

CONSULTING ENGINEERS OR: SCHELEN, MAYERS & ASSOC., INC. MPLS., MINN.

APPROVED BY: [Signature]

DATE: 7-22-73



THESE GRADES ESTABLISHED BY THE CITY ENGINEER

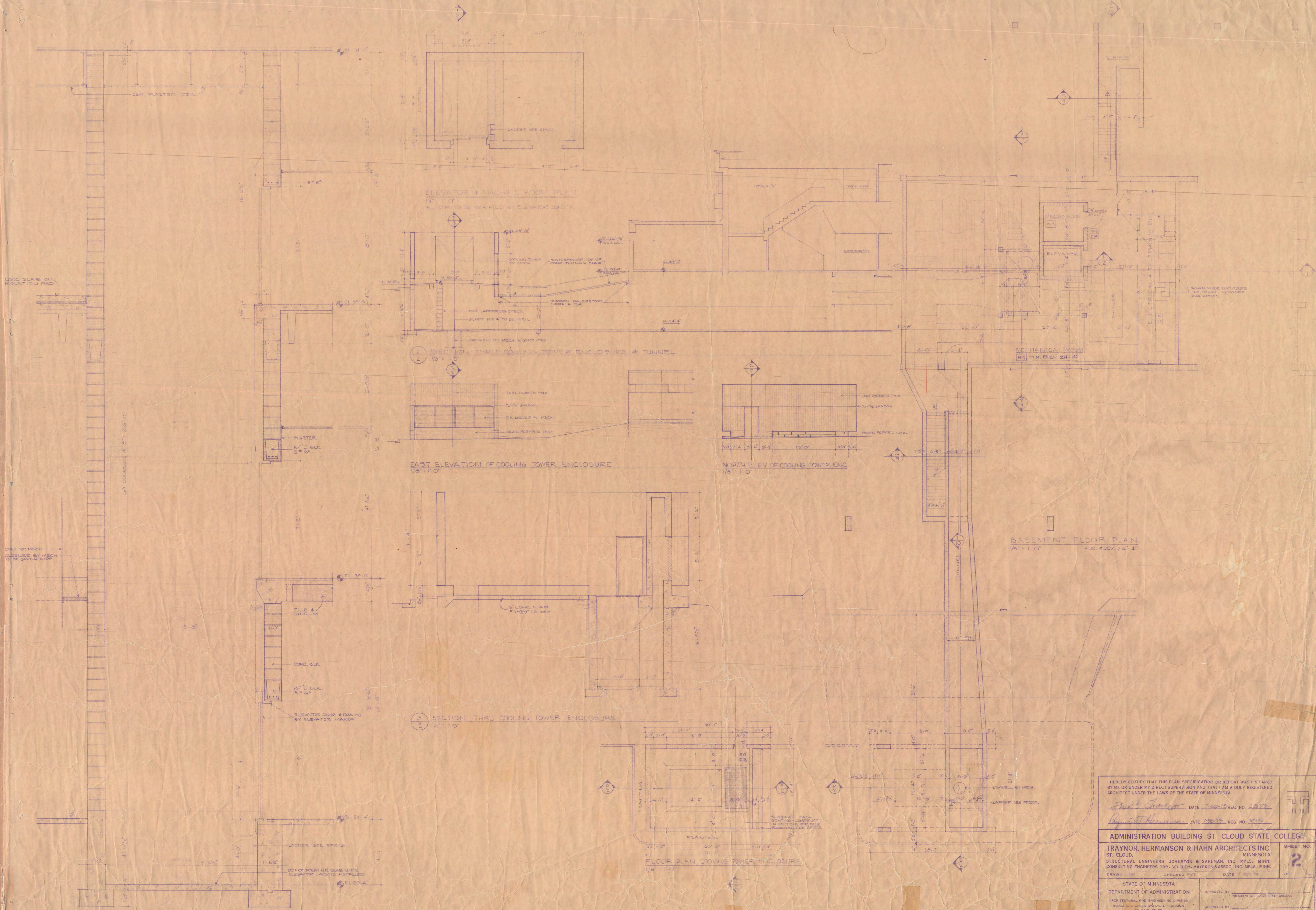
NOTE: REMOVE ONLY THOSE TREES WHICH ARE WITHIN THE AREA OF NEW ROADS AND BUILDING AREA OR WALKWAYS OR WALKS. REMOVE ANY TREES OR GRASSES OR GRASS LAWNS DURING CONSTRUCTION.

CITY WILL REMOVE CURBS & REPAIRS ON STREET SO. SUMMER OF 74 ACCORDING TO ELEVATION SHEET 16B

SECTION thru EXTERIOR STEPS & WALK

APPROVED BY: [Signature]

DATE: 7-22-73



I HEREBY CERTIFY THAT THIS PLAN, SPECIFICATION, OR REPORT WAS PREPARED BY ME OR UNDER MY DIRECT SUPERVISION AND THAT I AM A DULY REGISTERED ARCHITECT UNDER THE LAWS OF THE STATE OF MINNESOTA.

Paul J. Hermanson DATE 7-20-78 REG. NO. 2899
Raymond J. Hahn DATE 7-20-78 REG. NO. 3115

ADMINISTRATION BUILDING ST. CLOUD STATE COLLEGE

TRAYNOR, HERMANSON & HAHN ARCHITECTS INC. MINNESOTA
 ST. CLOUD, MINNESOTA
 STRUCTURAL ENGINEERS JOHNSTON & SAHLMAN, INC. MPLS., MINN.
 CONSULTING ENGINEERS ORR - SCHELEN - MAYERSON ASSOC. INC. MPLS., MINN.

DRAWN BY: _____ CHECKED BY: _____ DATE: 7-20-78
 APPROVED BY: _____ PRESIDENT ST. CLOUD STATE COLLEGE
 APPROVED BY: _____ ASST. COLLEGE ENGINEER
 APPROVED BY: _____ REGISTERED PROFESSIONAL ARCHITECT

STATE PROJECT NO. 635074

CHANGE - MOVE THIS CASE SOUTH TO WALL - NO CHANGE TO CASE

CHANGE - DO NOT INSTALL CABINET IN THIS SPACE - ONLY TOP TO BE INSTALLED BY OWNER OVER EXISTING CABINET INTO THIS SPACE

CHANGE - MOVE SHELVING TO ANOTHER WALL

CHANGE - ADD TOP & FRONT TO CONSOLE REFRIG. SEE MODIFIED WILLIAMS CASH & CO. 2 SHOP DRAWING NO. 25

- 1) COVERABLE & TREATMENT
- 2) 10" HALL
- 3) TURNER TABLE
- 4) 10" HALL
- 5) 10" HALL
- 6) 10" HALL
- 7) 10" HALL
- 8) 10" HALL
- 9) 10" HALL
- 10) 10" HALL
- 11) 10" HALL
- 12) 10" HALL
- 13) 10" HALL
- 14) 10" HALL
- 15) 10" HALL
- 16) 10" HALL
- 17) 10" HALL
- 18) 10" HALL
- 19) 10" HALL
- 20) 10" HALL

NOTE: MINIMUM CLEARANCE UNDER TABLES TO BE MAINTAINED

4" 1/2" 10" HALL

10" HALL

10" HALL

SECTION 4 ELEVATION OF WARDROBE

1/2" 10"

SECTION 5 ELEVATION OF WARDROBE

1/2" 10"

TYP DET OF PART SET OFFICE CUBICLE

1/2" 10"

PLANTING BED DIVIDER STEP

1/2" 10"

HEREBY CERTIFY THAT THIS PLAN, SPECIFICATION, OR REPORT WAS PREPARED BY ME OR UNDER MY DIRECT SUPERVISION AND THAT I AM A DULY REGISTERED ARCHITECT UNDER THE LAWS OF THE STATE OF MINNESOTA.

John A. Johnson DATE 2-27-73 REG NO 1273

Edward Thompson DATE 7-27-73 REG NO 2715

ADMINISTRATION BUILDING ST. CLOUD STATE COLLEGE

TRAYNOR, HERMANSON & HAHN ARCHITECTS INC

ST. CLOUD, MINNESOTA

STRUCTURAL ENGINEERS JOHNSTON & SANMAN, INC WAPLES, MINN

CONSULTING ENGINEERS ORP SCHLEN, MAYNARD, ASSO. INC MPLS, MINN

DR. W. W. ... CHECKED BY ... DATE 7-27-73

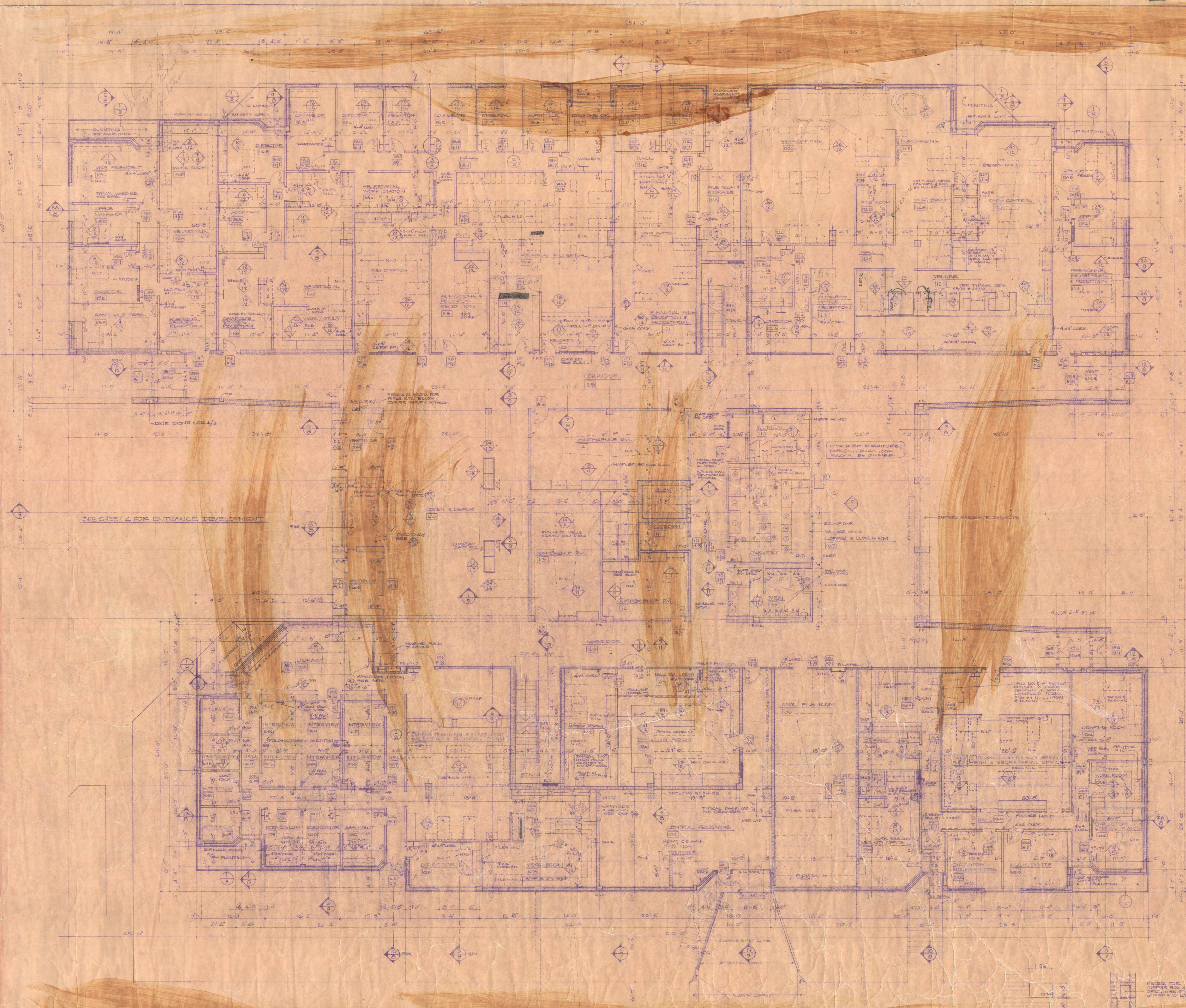
STATE OF MINNESOTA

DEPARTMENT OF ADMINISTRATION

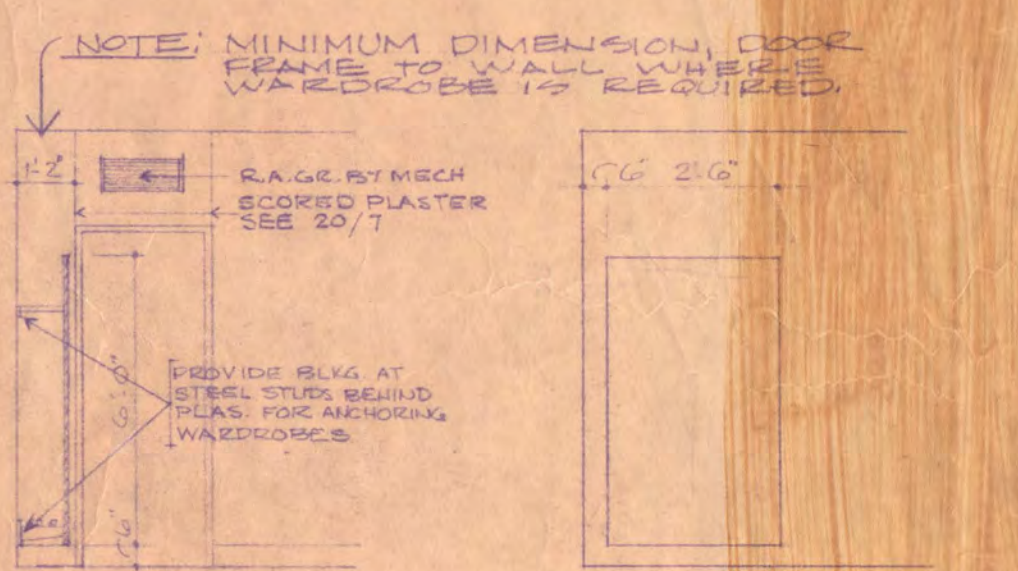
APPROVED BY: ...

APPROVED BY: ...

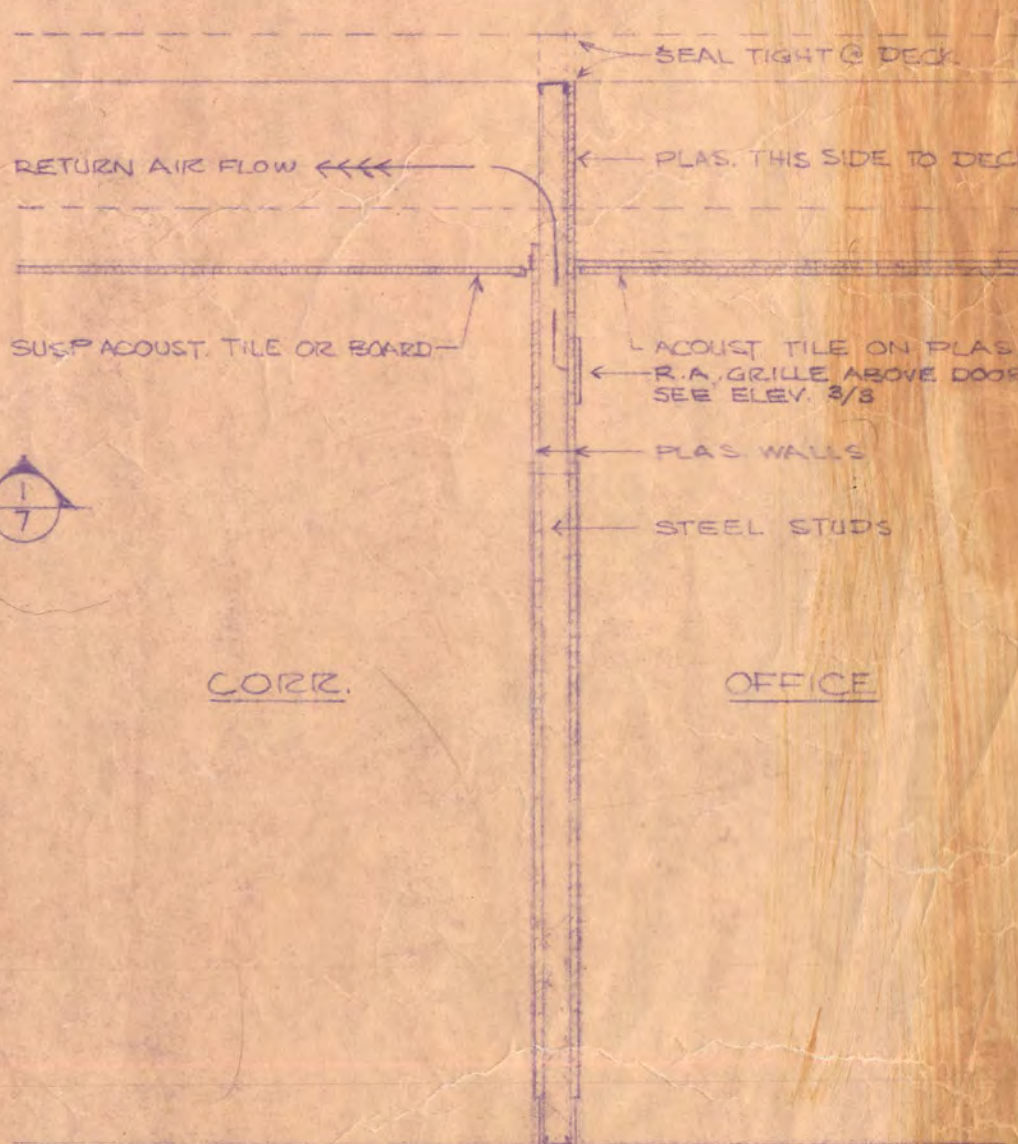
APPROVED BY: ...



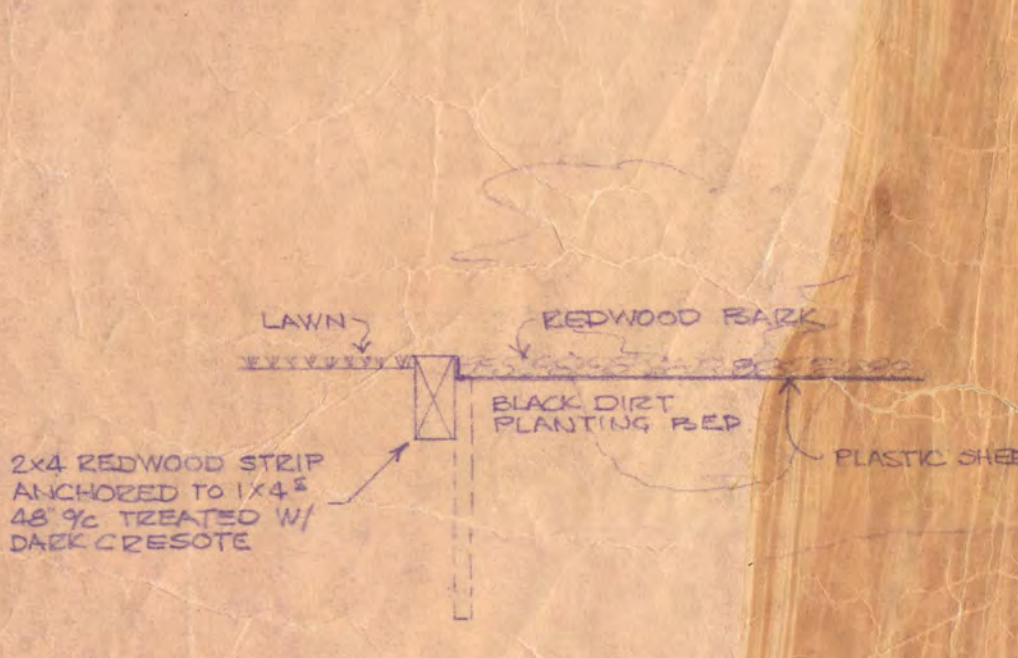
- SERVERY EQUIPMENT SCHEDULE**
- 1 SILVERWARE & TRAY CADDY
 - 2 COLD PAN
 - 3 CORNER FILLER
 - 4 HOT PAN
 - 5 UTILITY STATION
 - 6 SODA DISPENSER N.I.C.
 - 7 ICE CREAM CABINET N.I.C.
 - 8 CASHIER STATION (REGISTER N.I.C.)
 - 9 COFFEE MAKER & COUNTER
 - 10 HOT CABINET PASS THRU
 - 11 COLD CABINET PASS THRU
 - 12 ICE MACHINE
 - 13 DISH CARTS
 - 14 DISH TABLE W/SINKS, DISPOSAL, BOOSTER HEATER, CORNER DISHWASHER, FREEZER
 - 15 REFRIGERATOR
 - 16 WORK COUNTER & WALL CABINET
 - 17 WAITRESS STATION W/ WATER FILLER & ICE BIN - SHELVES ABOVE CABINET BY REFRIG.



SECTION & ELEVATION OF WARDROBE
 1/2" = 1'-0" TYPICAL DOOR LOCATION



TYP. DET. OF PART BET OFFICE & CORE
 1/2" = 1'-0"



PLANTING BED DIVIDER STRIP
 1/2" = 1'-0"

FIRST FLOOR PLAN
 1/2" = 1'-0" FLR. ELEV. 59'-0"

I HEREBY CERTIFY THAT THIS PLAN, SPECIFICATION, OR REPORT WAS PREPARED BY ME OR UNDER MY DIRECT SUPERVISION AND THAT I AM A DULY REGISTERED ARCHITECT UNDER THE LAWS OF THE STATE OF MINNESOTA.

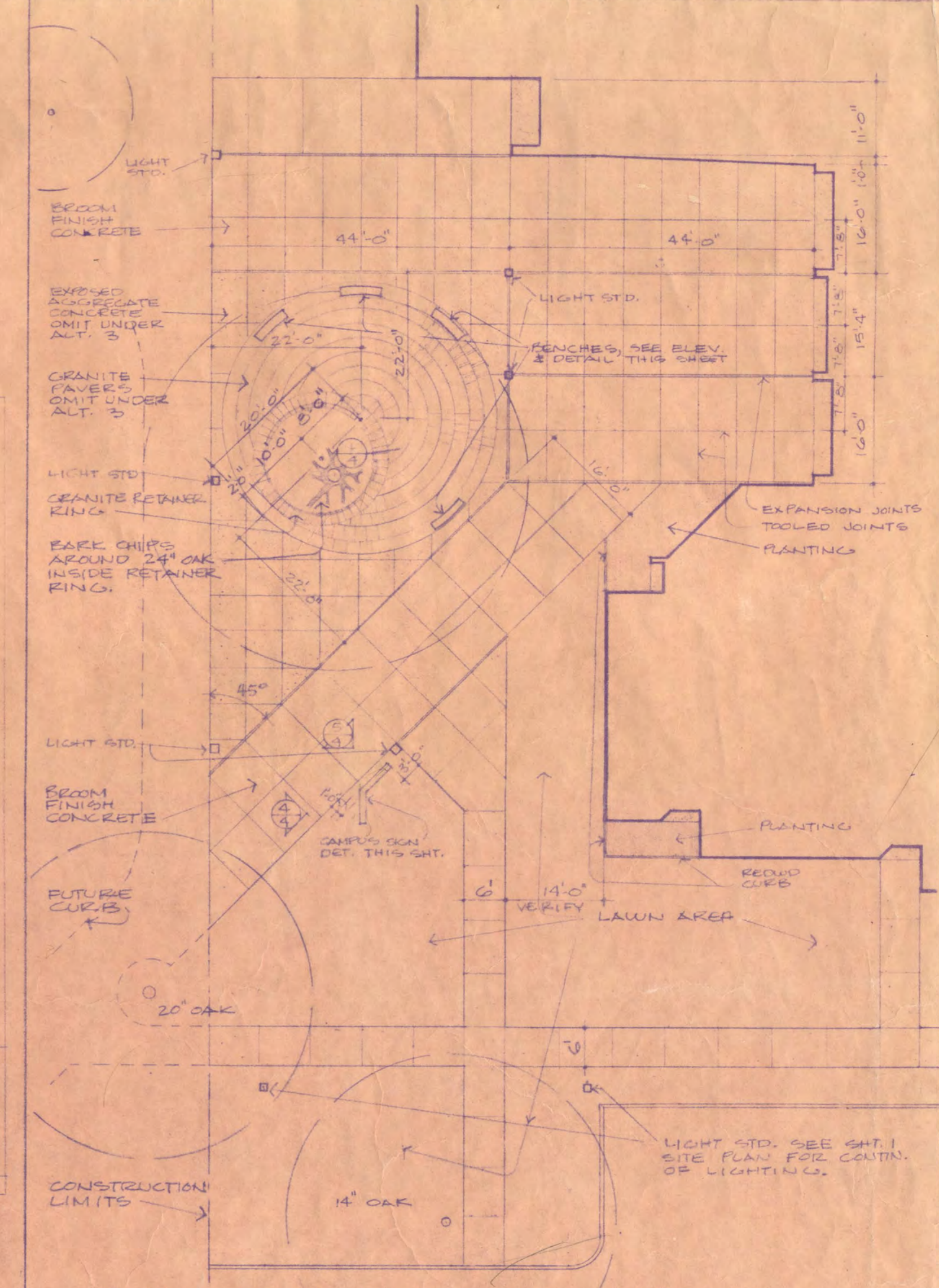
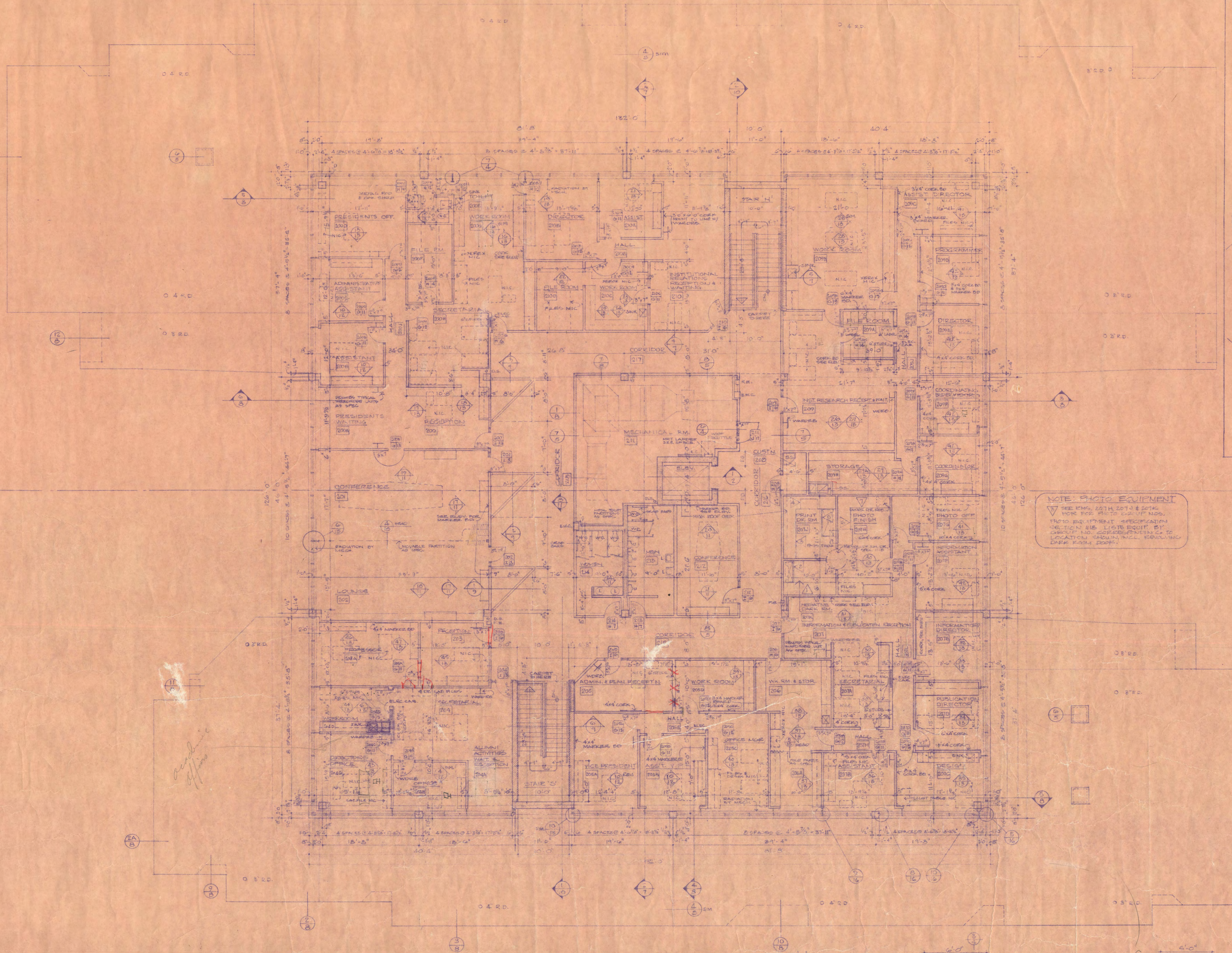
Richard J. Johnson DATE 7-20-72 REG. NO. 25279
Raymond Thomsen DATE 7-20-72 REG. NO. 2715

ADMINISTRATION BUILDING ST. CLOUD STATE COLLEGE
 TRAYNOR, HERMANSON & HAHN ARCHITECTS INC. SHEET NO. 3
 ST. CLOUD, MINNESOTA
 STRUCTURAL ENGINEERS JOHNSTON & SAHLMAN, INC. MPLS., MINN.
 CONSULTING ENGINEERS ORR - SCHELEN - MAYERSON & ASSOC., INC. MPLS., MINN.

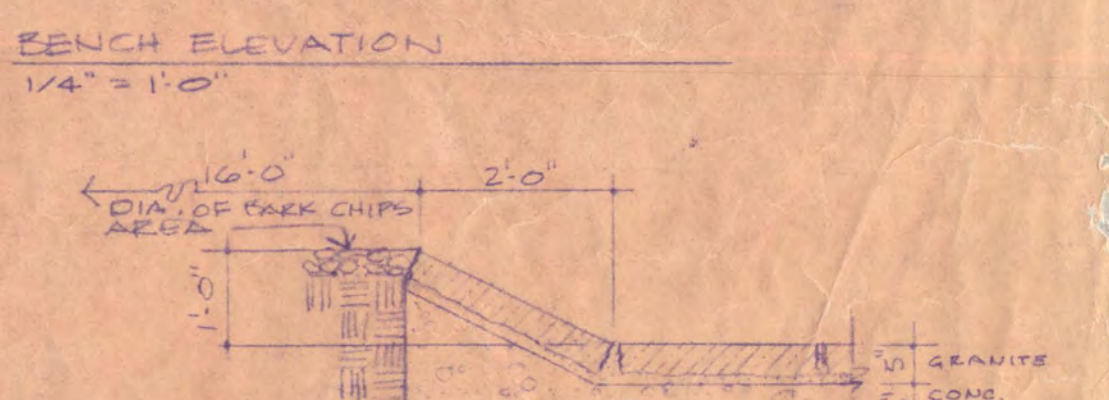
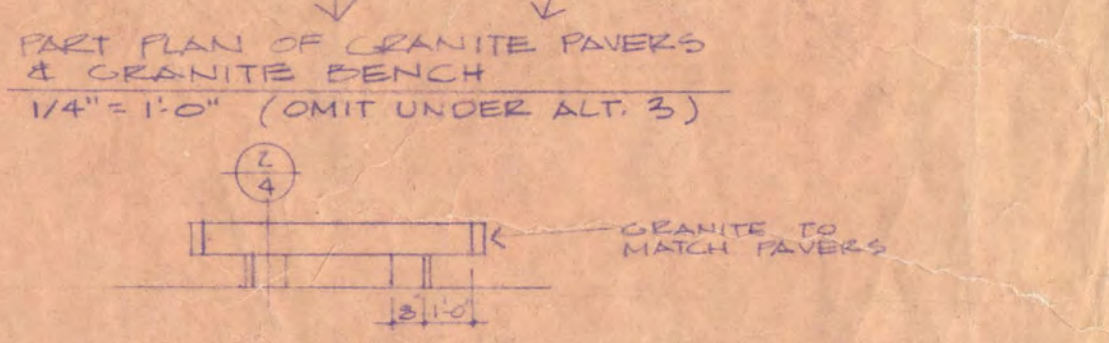
STATE OF MINNESOTA
 DEPARTMENT OF ADMINISTRATION
 ARCHITECTURAL AND ENGINEERING DIVISION
 ROOM 610 - ADMINISTRATION BUILDING
 ST. PAUL, MINN.

APPROVED BY: _____
 DATE: 7-20-72

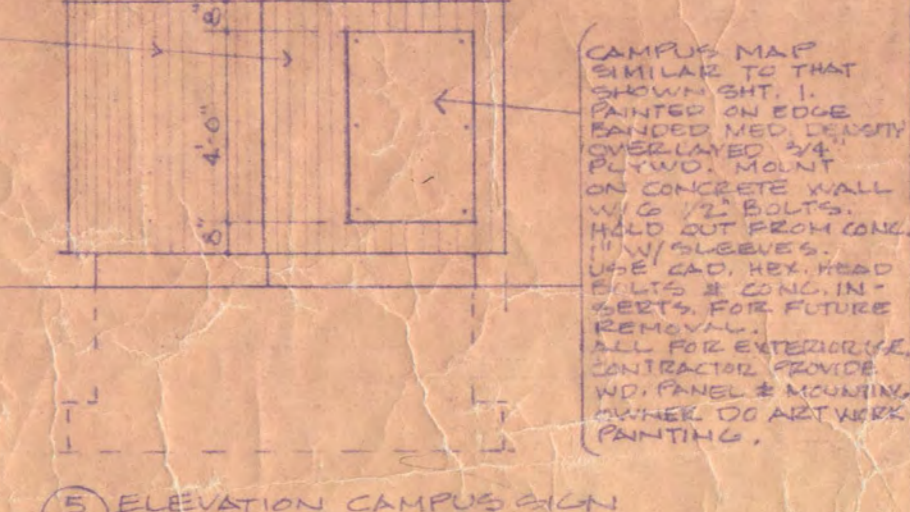
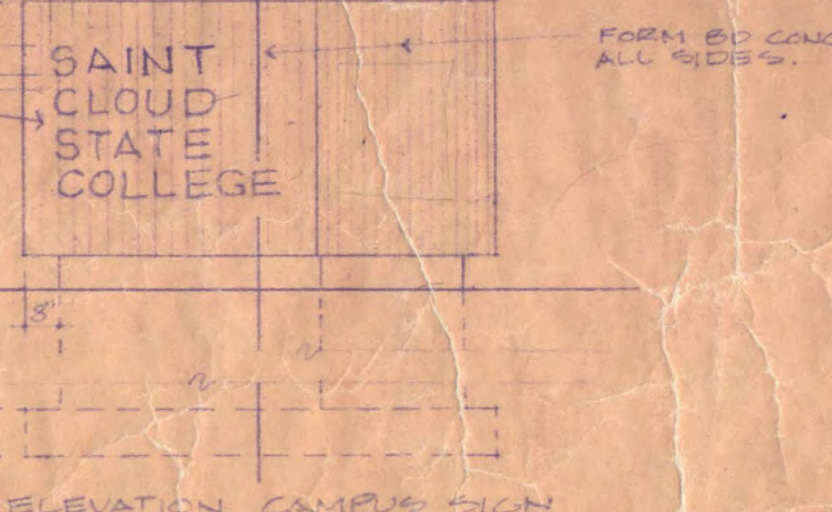
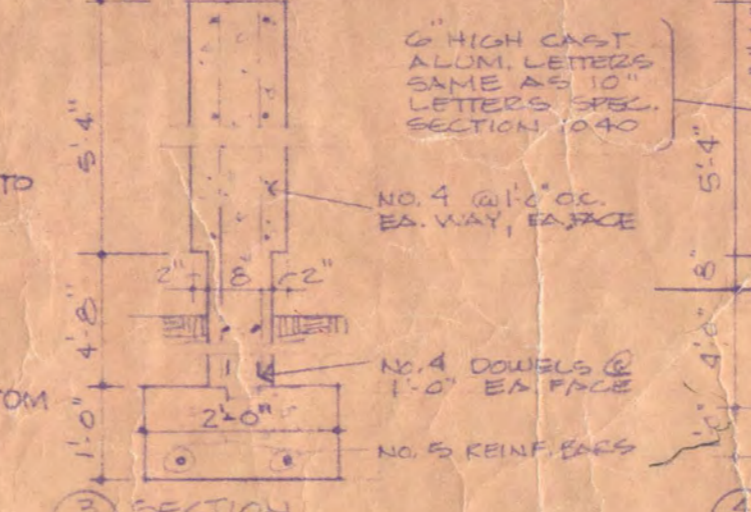
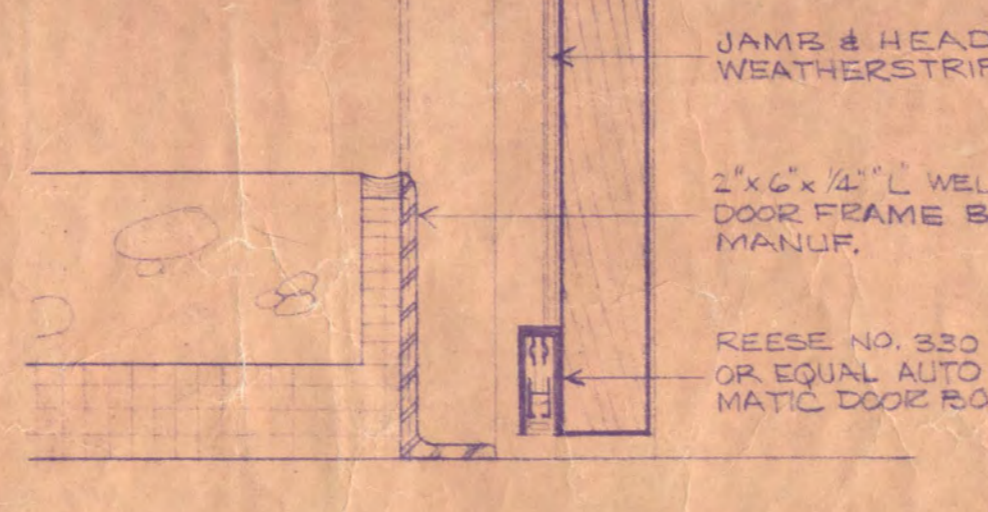
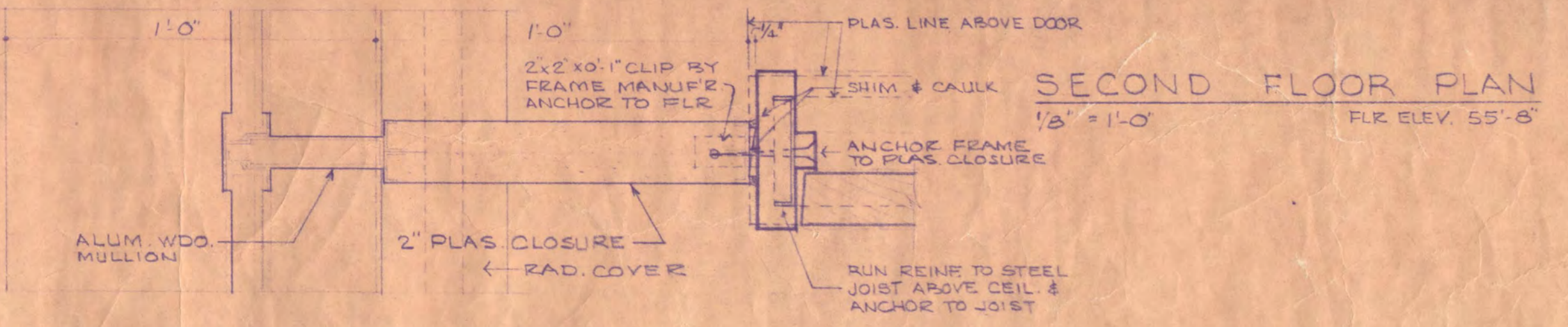
GRANITE DAINSTONE DETAIL
 1/2" = 1'-0"



NOTE: PHOTO EQUIPMENT
 SEE ENDS 20TH, 20TH & 20TH FOR PHOTO EQUIPMENT NOS.
 PHOTO EQUIPMENT SPECIFICATION SECTION 118 LISTS EQUIP BY MAKEUP NO. CORRESPONDING TO LOCATION SHOWN INCL. INCLUDING OVER EACH ROOM.



GRANITE FINISHES: PAVERS - ROCKVILLE PLANE FINISH, SPLIT EDGE NOM. DIM. 2'-0" X 1'-4".
 BENCHES - CHARCOAL HONED FINISH ON SEAT AND SUPPORTS.
WEST BUILDING APPROACH



I HEREBY CERTIFY THAT THIS PLAN, SPECIFICATION, OR REPORT WAS PREPARED BY ME OR UNDER MY DIRECT SUPERVISION AND THAT I AM A DULY REGISTERED ARCHITECT UNDER THE LAWS OF THE STATE OF MINNESOTA.

Paul J. Traynor DATE 12-17-72 REG. NO. 2808
Raymond J. Hermanson DATE 12-17-72 REG. NO. 3715

ADMINISTRATION BUILDING ST. CLOUD STATE COLLEGE

TRAYNOR, HERMANSON & HAHN ARCHITECTS INC.
 ST. CLOUD, MINNESOTA
 STRUCTURAL ENGINEERS JOHNSTON & SAHLMAN, INC. MPLS., MINN.
 CONSULTING ENGINEERS ORR - SCHELEN - MAYERSON & ASSOC., INC. MPLS., MINN.

DRAWN E.D. 12-20-72 CHECKED P.T. DATE 1-3-73 OF 4

STATE OF MINNESOTA
 DEPARTMENT OF ADMINISTRATION
 ARCHITECTURAL AND ENGINEERING DIVISION
 ROOM 6-10 ADMINISTRATION BUILDING
 ST. PAUL, MINN. 55155

APPROVED BY: PRESIDENT ST. CLOUD STATE COLLEGE
 APPROVED BY: STATE COLLEGE BOARD
 APPROVED BY: COMMISSIONER OF ADMINISTRATION
 AUTHORIZED SIGNATURE

STATE PROJECT NO. 6360174