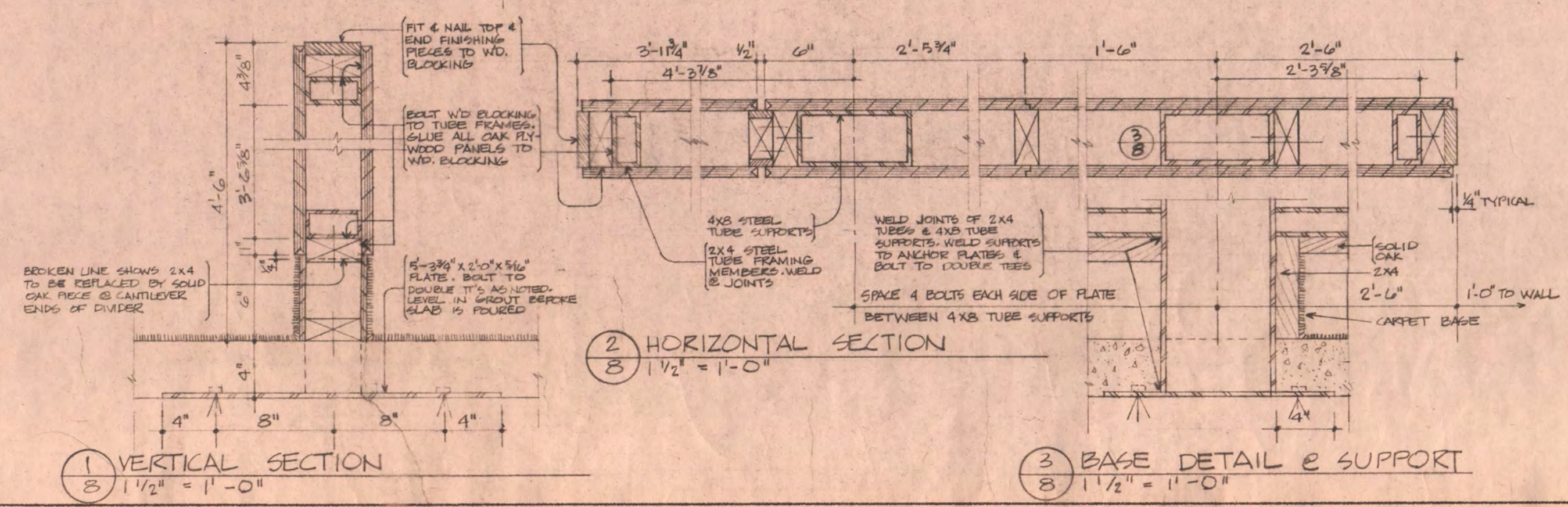
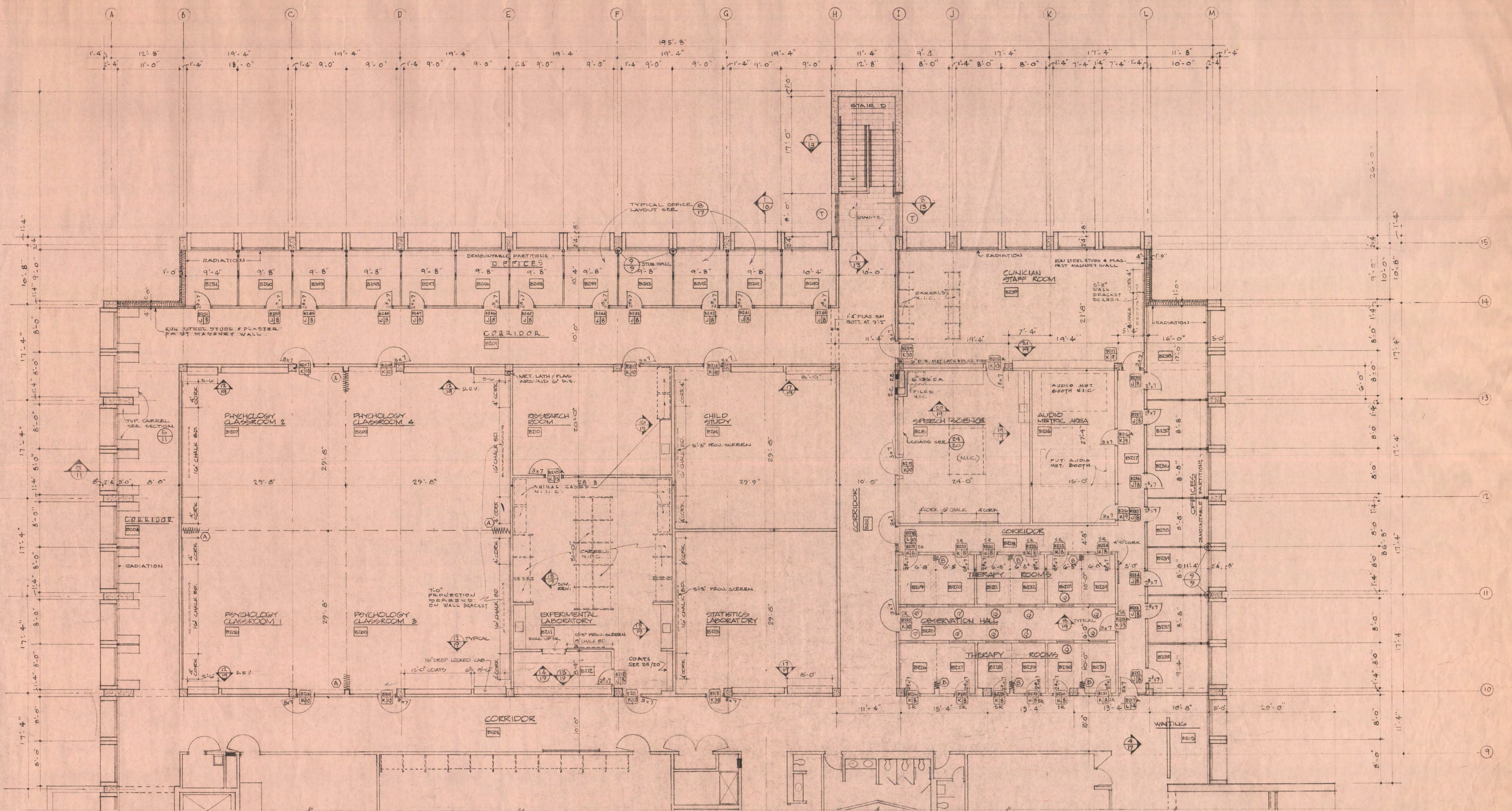


SECOND FLOOR PLAN UNIT A		1/8" = 1'-0"
EDUCATION BUILDING ST. CLOUD STATE COLLEGE		
TRAYNOR, HERMANSON & HAHN ARCHITECTS INC. ST. CLOUD, MINNESOTA STRUCTURAL ENGINEERS JOHNSTON & SAHLMAN, INC. MPLS., MINN. CONSULTING ENGINEERS GAUSMAN & MOORE, INC. ST. PAUL, MINN.		SHEET NO. <div style="font-size: 2em; font-weight: bold; text-align: center;">7</div>
DRAWN EAK, LSW, JAH CHECKED FVT DATE NOV. 10, 1967 OF 21		
STATE OF MINNESOTA DEPARTMENT OF ADMINISTRATION ARCHITECTURAL AND ENGINEERING DIVISION ROOM 6-10 ADMINISTRATION BUILDING ST. PAUL 55101		APPROVED BY _____ APPROVED BY _____ APPROVED BY _____
STATE PROJECT NO. 6360150		COMMISSIONER OF ADMINISTRATION AN AUTHORIZED SIGNATURE



SECOND FLOOR PLAN UNIT B 1/8" = 1'-0"

EDUCATION BUILDING ST. CLOUD STATE COLLEGE

TRAYNOR, HERMANSON & HAHN ARCHITECTS INC. MINNESOTA
 ST. CLOUD, MINN.
 STRUCTURAL ENGINEERS JOHNSTON & SAHLMAN, INC. MPLS., MINN.
 CONSULTING ENGINEERS GAUSMAN & MOORE, INC. ST. PAUL, MINN.

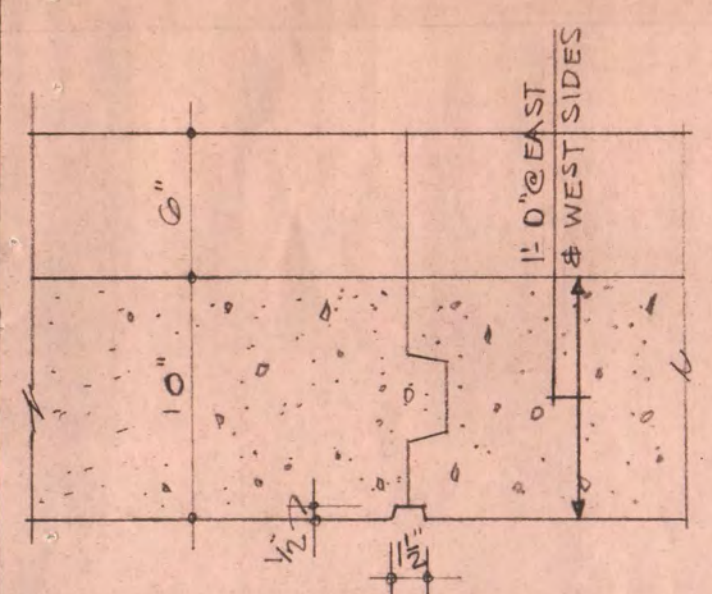
SHEET NO. **83** OF 21

DRAWN EAK, LLW, JAM CHECKED FVT DATE NOV. 10, 1969

STATE OF MINNESOTA
 DEPARTMENT OF ADMINISTRATION
 ARCHITECTURAL AND ENGINEERING DIVISION
 ROOM G-10 ADMINISTRATION BUILDING
 ST. PAUL 55101

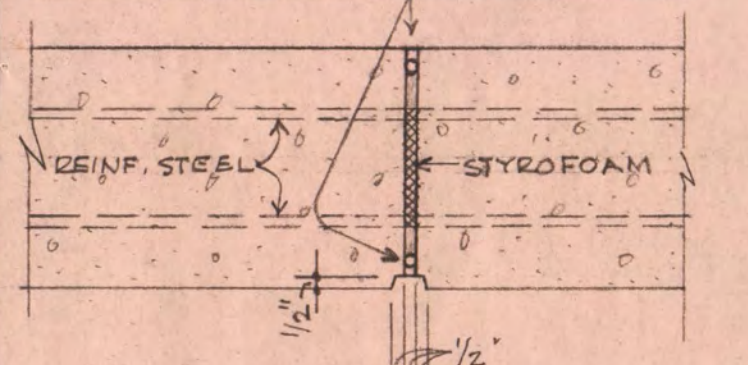
APPROVED BY _____
 APPROVED BY _____
 APPROVED BY _____

STATE PROJECT NO. 6360150 COMMISSIONER OF ADMINISTRATION
 AN AUTHORIZED SIGNATURE

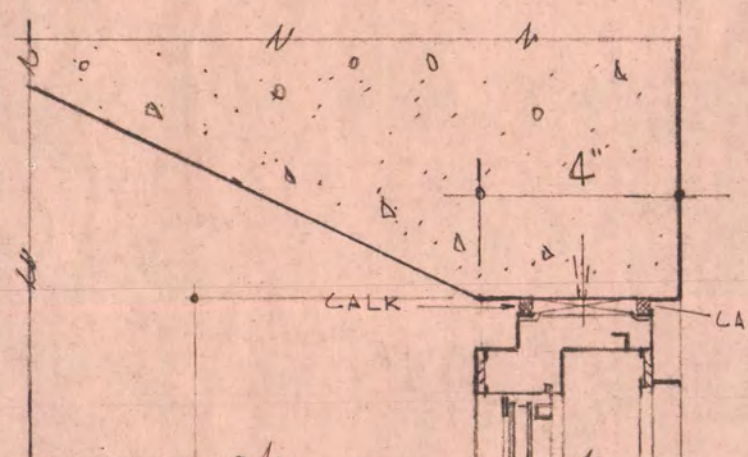


1 CONTROL JOINT DET.
1 1/2" = 1'-0"

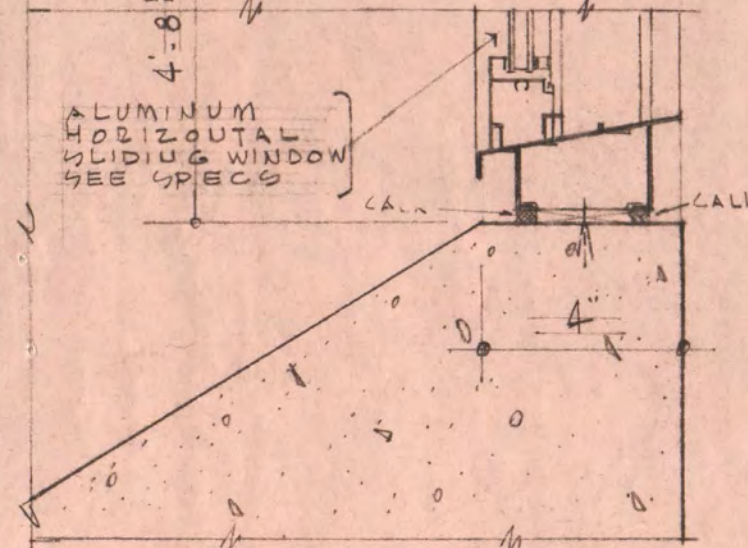
REMOVE 1/2" STYROFOAM FROM FACE TO REINF. STEEL - TAKE 1" THICK SOFT JOINT FILLER, COMPRESS TO 1/2" & INSERT RACK W/ 5/8" ETHAFOAM & CAULK EA. SIDE



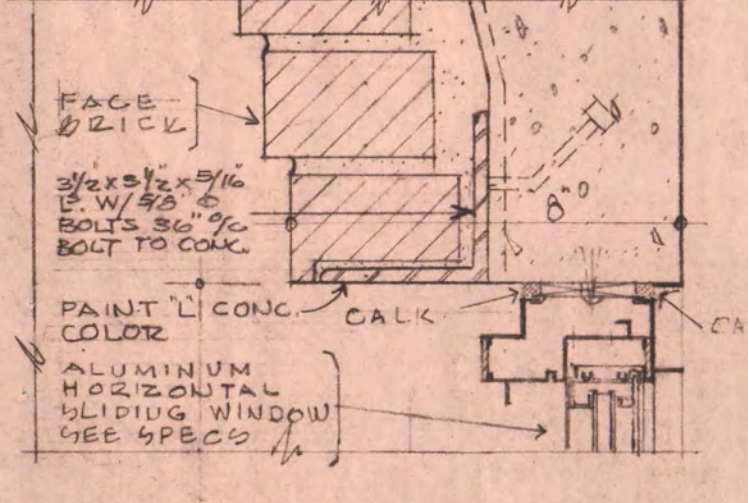
2 EXPANSION JOINT
9 1/2" = 1'-0"



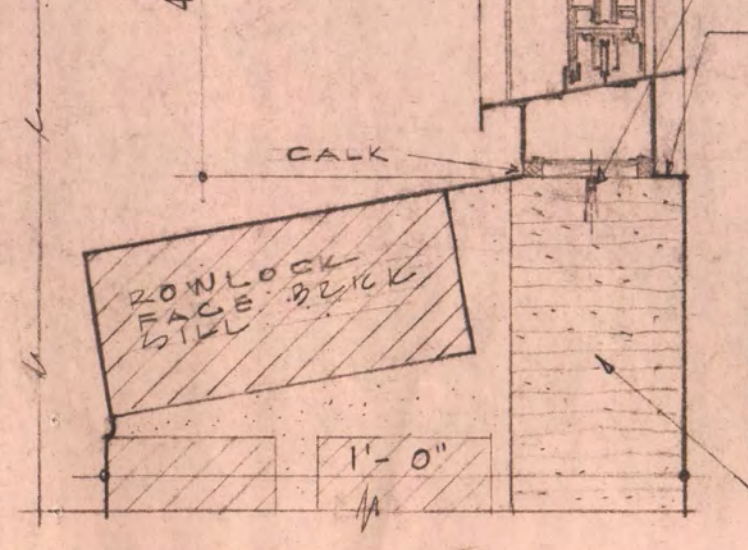
3 HEAD SECTION
9 1/2" = 1'-0"



4 SILL SECTION
9 2ND FLR WINDOWS
9 1/2" = 1'-0"

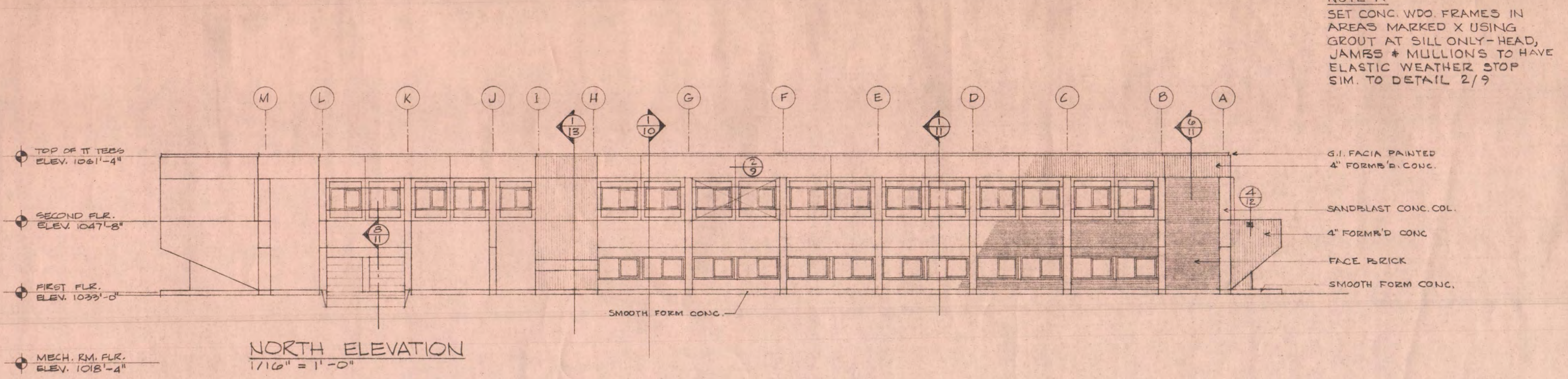


5 HEAD SECTION
9 1/2" = 1'-0"

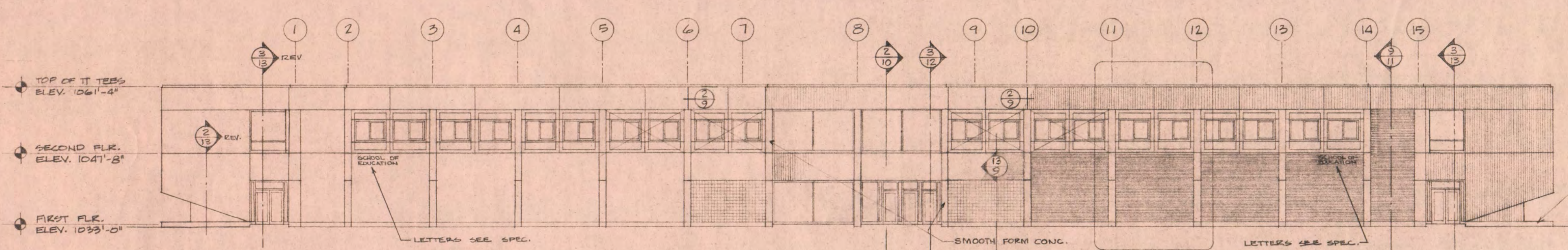


6 SILL SECTION
9 1ST FLOOR WINDOWS
9 1/2" = 1'-0"

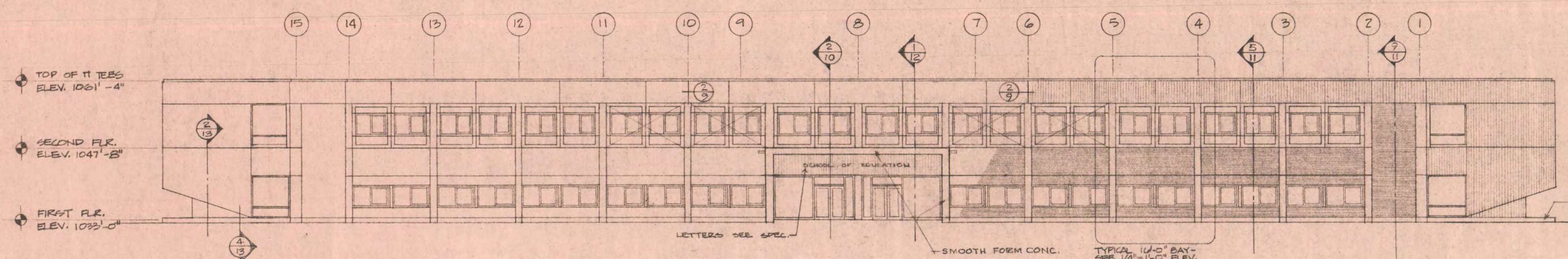
ALUMINUM SLIDING WINDOW DETAILS



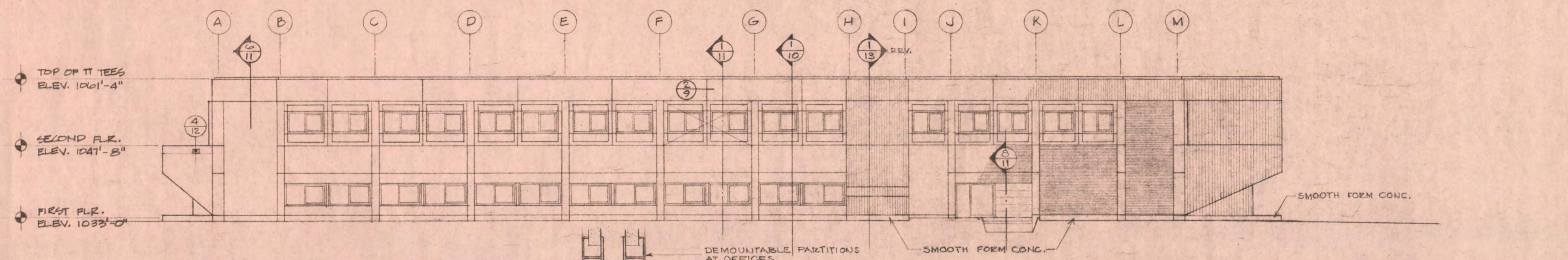
NORTH ELEVATION
1 7/16" = 1'-0"



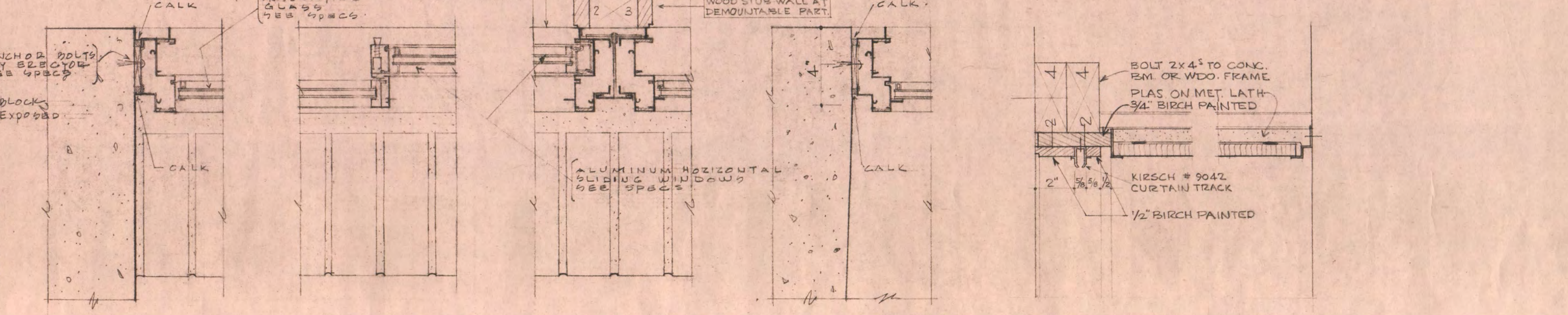
EAST ELEVATION
1 7/16" = 1'-0"



WEST ELEVATION
1 7/16" = 1'-0"

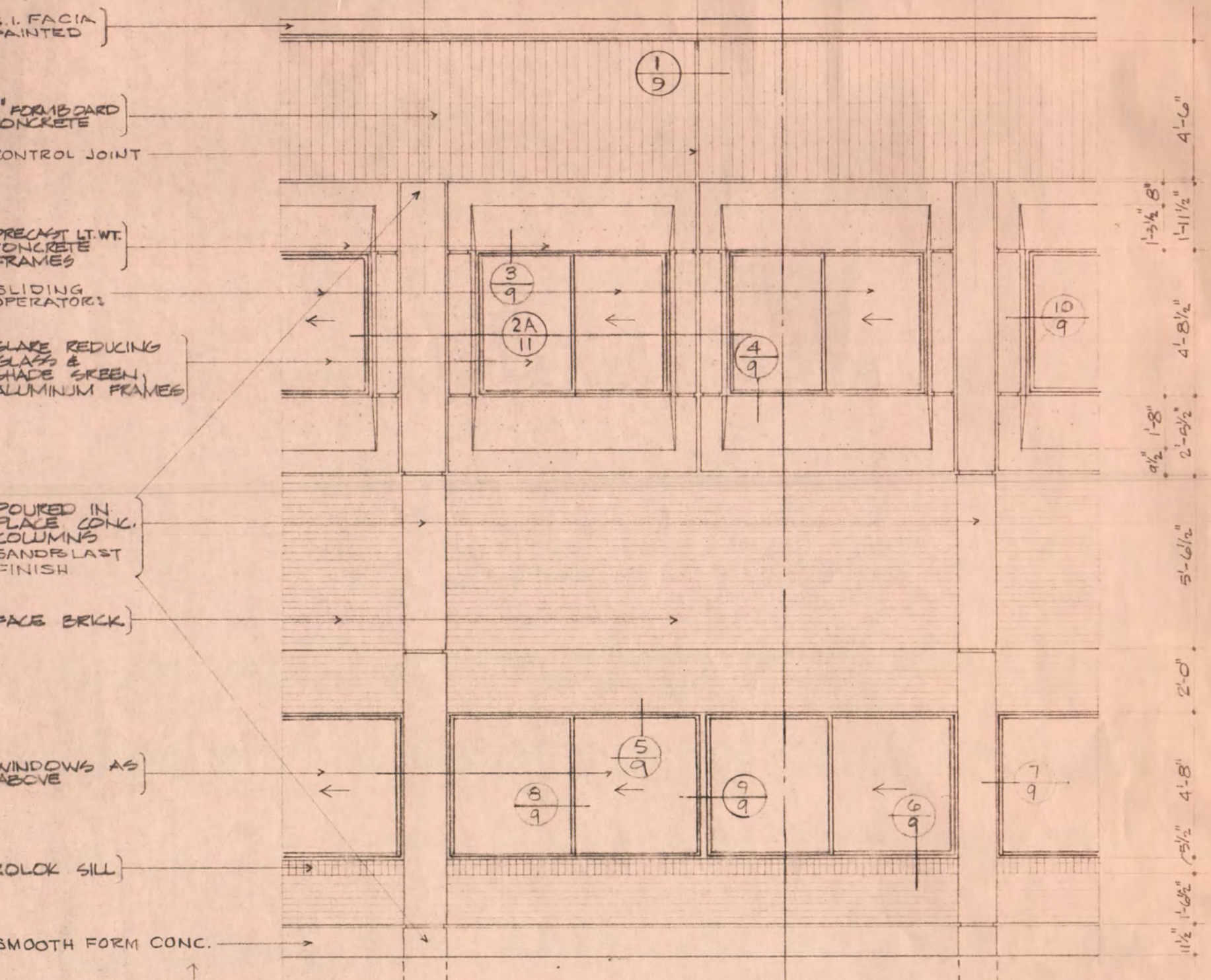


SOUTH ELEVATION
1 7/16" = 1'-0"

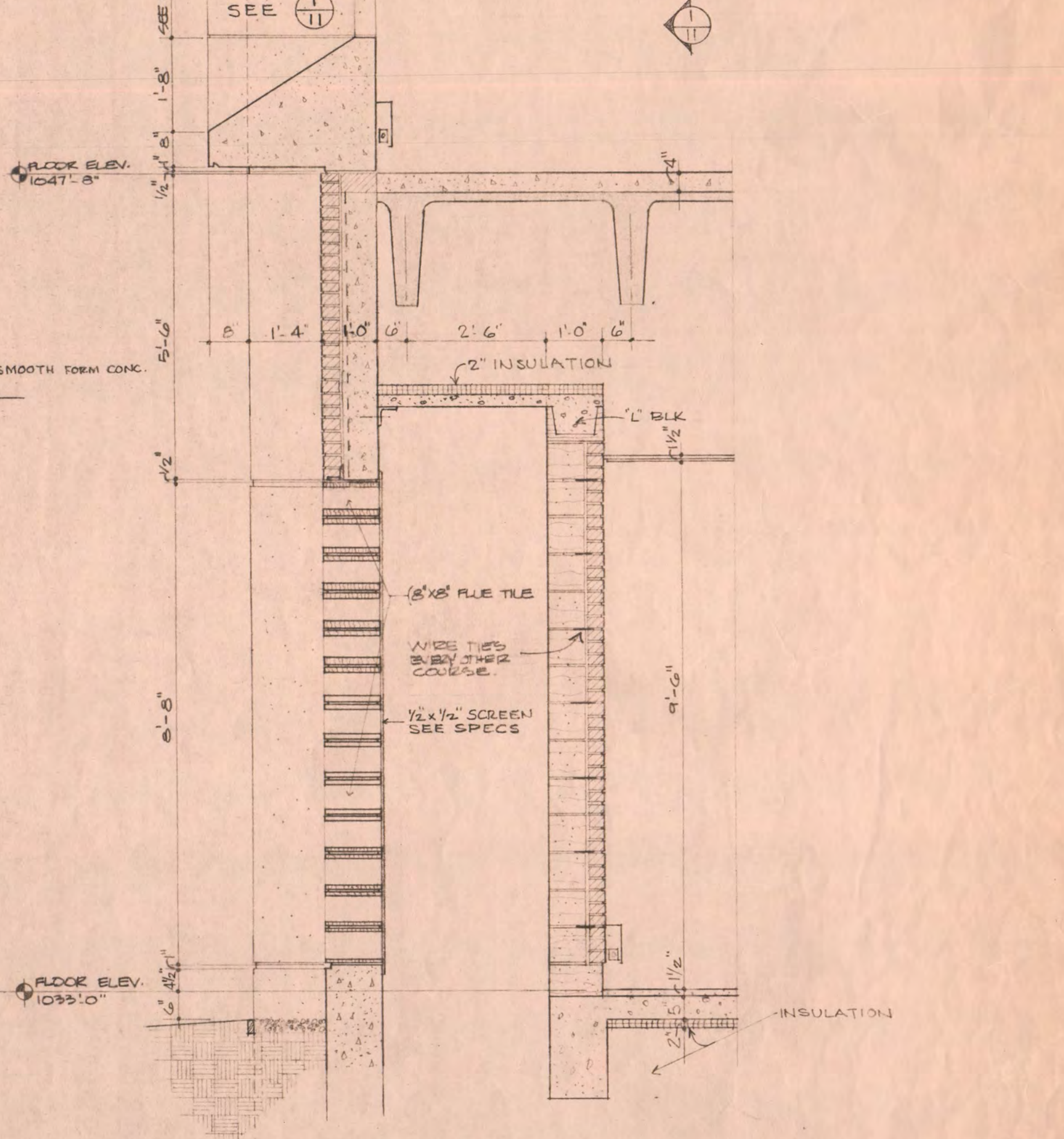


7 JAMB SECT AT CONC. COL.
8 MEETING RAIL
9 MULLION
10 JAMB SECT CONC. FRAME
11 OS. WALL CEIL @ OFFICES
12 IS. WALL CEIL @ OFFICES

NOTE A
SET CONC. WDO. FRAMES IN AREAS MARKED X USING GROUT AT SILL ONLY - HEAD, JAMBS & MULLIONS TO HAVE ELASTIC WEATHER STOP SIM. TO DETAIL 2/9



TYPICAL EXTERIOR ELEVATION - 16' BAY - 18' SIM.
1 7/4" = 1'-0"



13 F.A. INTAKE SCREEN
1 7/2" = 1'-0"

EDUCATION BUILDING ST. CLOUD STATE COLLEGE

TRAYNOR, HERMANSON & HAHN ARCHITECTS INC.
ST. CLOUD, MINNESOTA
STRUCTURAL ENGINEERS JOHNSTON & SAHLMAN, INC. MPLS., MINN.
CONSULTING ENGINEERS GAUSMAN & MOORE, INC. ST. PAUL, MINN.

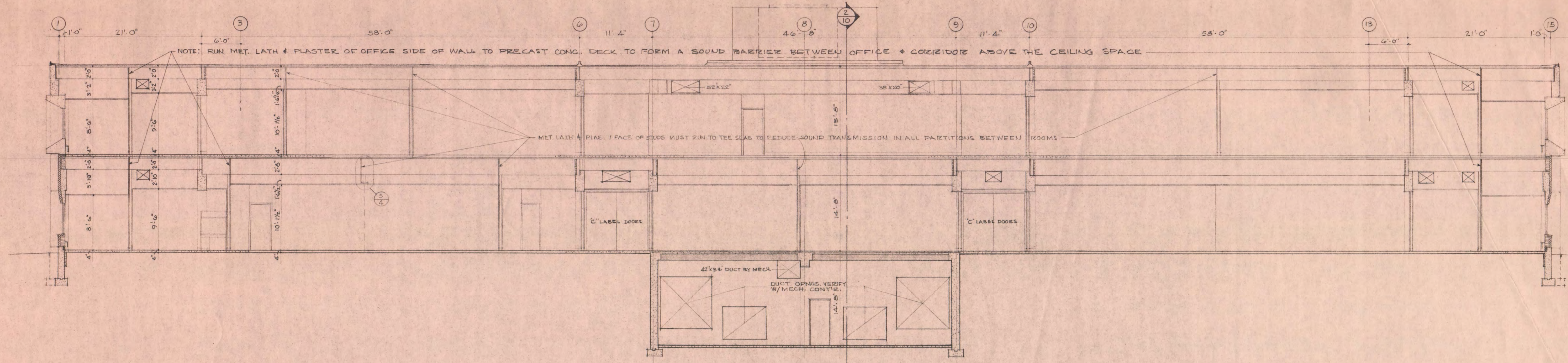
DRAWN RWH EAK LLW CHECKED FVT DATE NOV. 10, 1969

STATE OF MINNESOTA
DEPARTMENT OF ADMINISTRATION
ARCHITECTURAL AND ENGINEERING DIVISION
ROOM 6-10 ADMINISTRATION BUILDING
ST. PAUL 55101

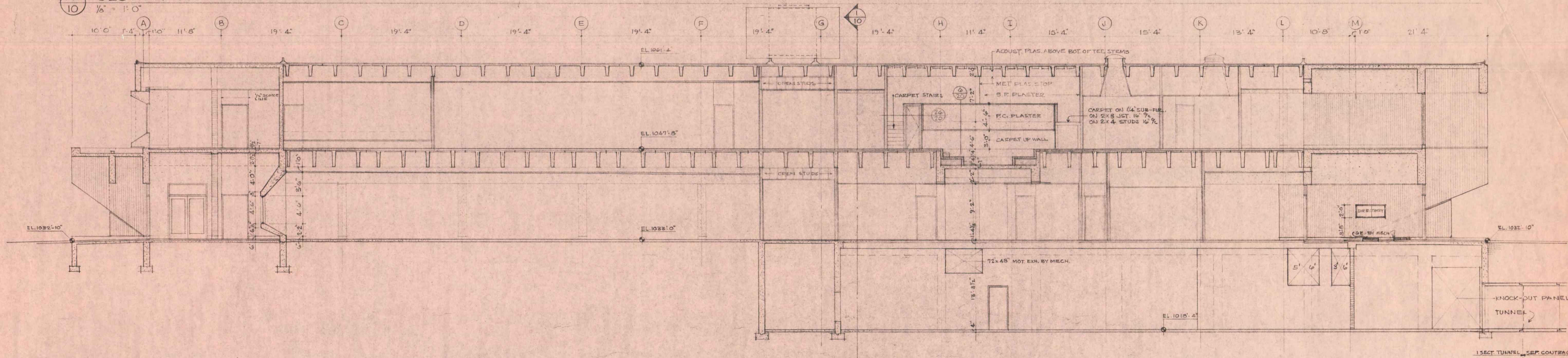
APPROVED BY _____
APPROVED BY _____
APPROVED BY _____

STATE PROJECT NO. 6360150

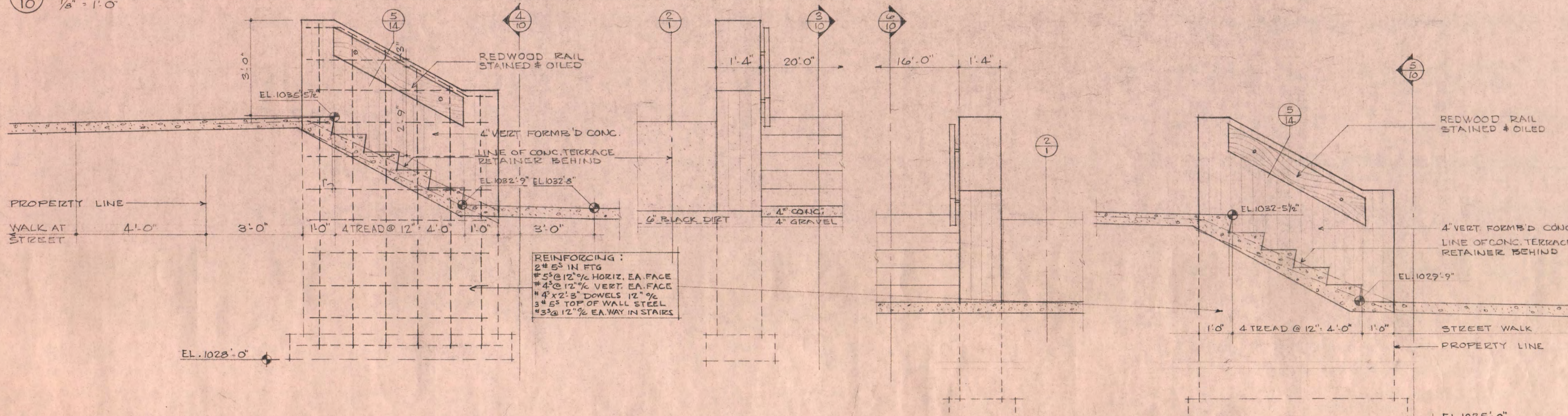
COMMISSIONER OF ADMINISTRATION
AN AUTHORIZED SIGNATURE



1 SECTION
10 1/2" = 1'-0"



2 SECTION
10 1/2" = 1'-0"



3 SECTION THRU WEST EXTERIOR STEPS & WALL
10 1/2" = 1'-0"

4 PART ELEV. WEST STEPS
10 1/2" = 1'-0"

5 PART ELEV. EAST STEPS
10 1/2" = 1'-0"

6 SECTION THRU EAST EXTERIOR STEPS & WALL
10 1/2" = 1'-0"

EDUCATION BUILDING ST. CLOUD STATE COLLEGE

TRAYNOR, HERMANSON & HAHN ARCHITECTS INC.
ST. CLOUD, MINNESOTA
STRUCTURAL ENGINEERS JOHNSTON & SAHLMAN, INC. MPLS., MINN.
CONSULTING ENGINEERS GAUSMAN & MOORE, INC. ST. PAUL, MINN.

SHEET NO.
10
OF 21

STATE OF MINNESOTA
DEPARTMENT OF ADMINISTRATION
ARCHITECTURAL AND ENGINEERING DIVISION
ROOM 610 ADMINISTRATION BUILDING
ST. PAUL 55101

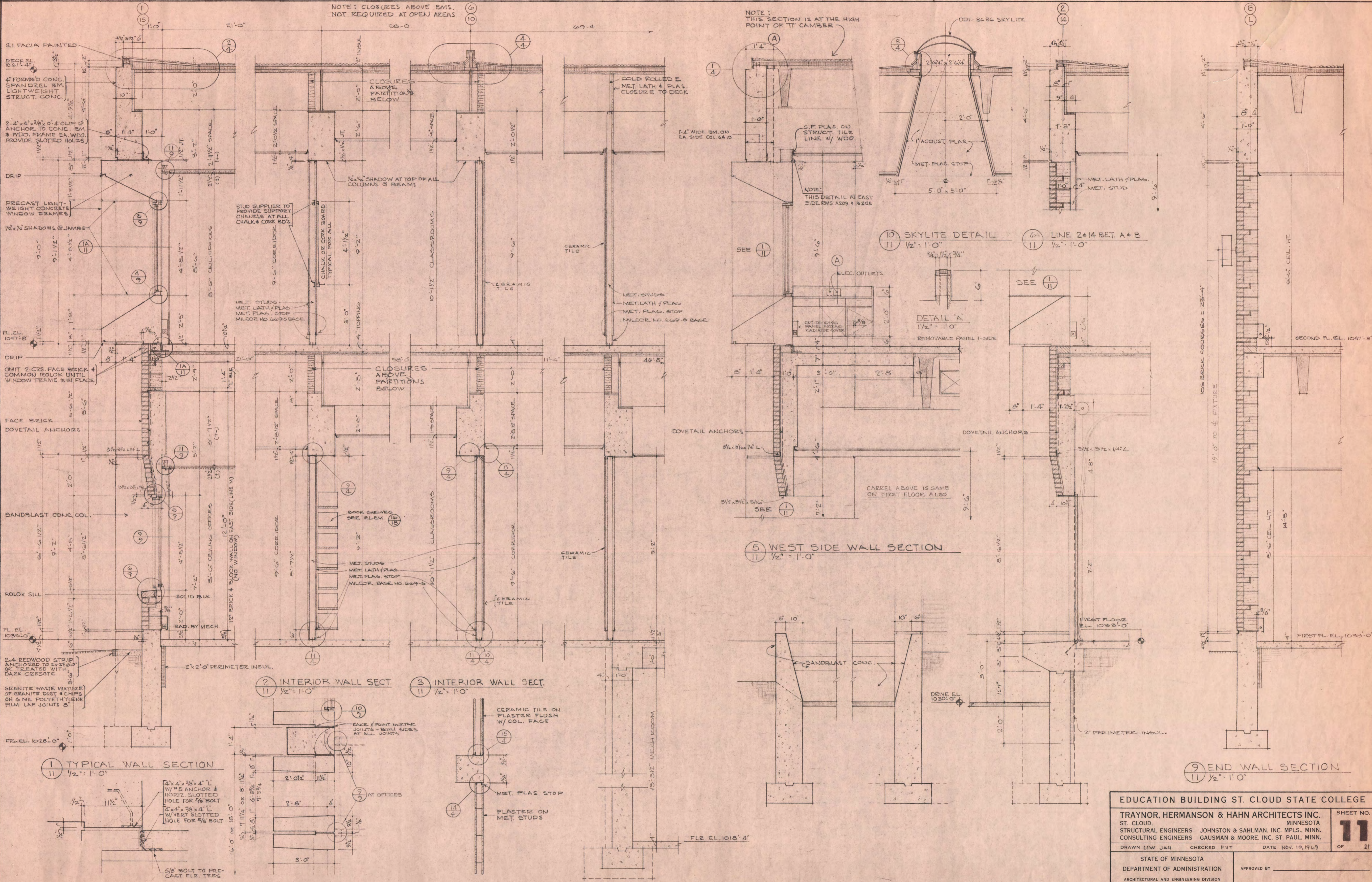
APPROVED BY _____

APPROVED BY _____

APPROVED BY _____

STATE PROJECT NO. 6360150

COMMISSIONER OF ADMINISTRATION
AN AUTHORIZED SIGNATURE



NOTE: CLOSURES ABOVE RMS. NOT REQUIRED AT OPEN AREAS

NOTE: THIS SECTION IS AT THE HIGH POINT OF TRIMMER

EDUCATION BUILDING ST. CLOUD STATE COLLEGE

TRAYNOR, HERMANSON & HAHN ARCHITECTS INC.
 ST. CLOUD, MINNESOTA
 STRUCTURAL ENGINEERS JOHNSTON & SAHLMAN, INC. MPLS. MINN.
 CONSULTING ENGINEERS GAUSMAN & MOORE, INC. ST. PAUL, MINN.
 DRAWN LEW JAH CHECKED P.V.T. DATE NOV. 10, 1969

SHEET NO. **11** OF 21

STATE OF MINNESOTA
 DEPARTMENT OF ADMINISTRATION
 ARCHITECTURAL AND ENGINEERING DIVISION
 ROOM 5-10 ADMINISTRATION BUILDING
 ST. PAUL 55101

APPROVED BY _____
 APPROVED BY _____
 APPROVED BY _____

STATE PROJECT NO. 6360150

COMMISSIONER OF ADMINISTRATION
 AN AUTHORIZED SIGNATURE

1A WDO. FRAME ANCHOR (2-PER UNIT)
 11 1/2" x 1'-0"

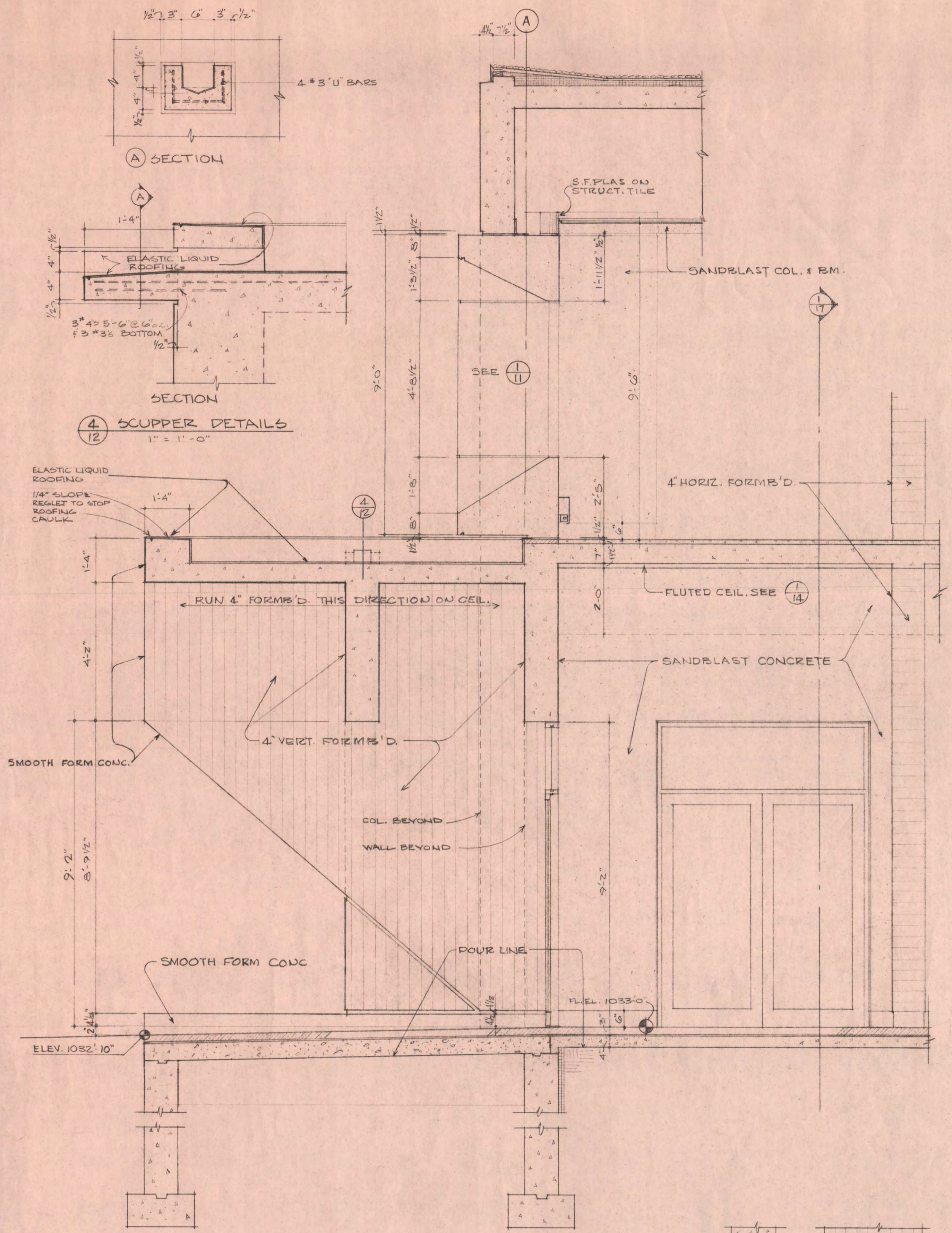
2A WDO. FRAME JAMB + MULL.
 11 1/2" x 1'-0"

3A PARTITION @ COLUMN
 11 1/2" x 1'-0"

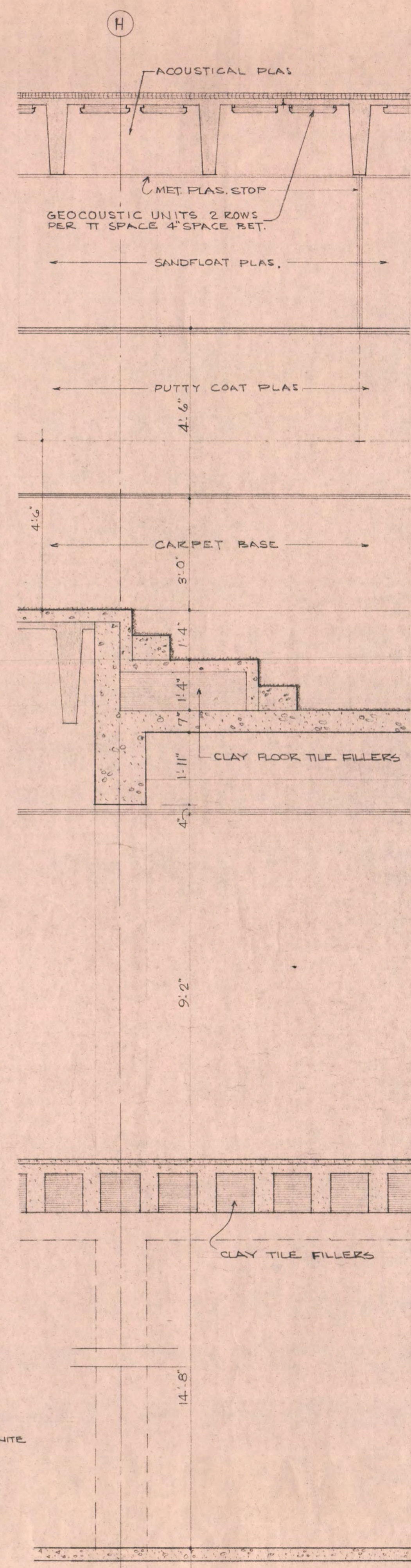
4 INTERIOR WALL SECT.
 11 1/2" x 1'-0"

7 LOADING DOCK RETAINING WALLS
 11 1/2" x 1'-0"

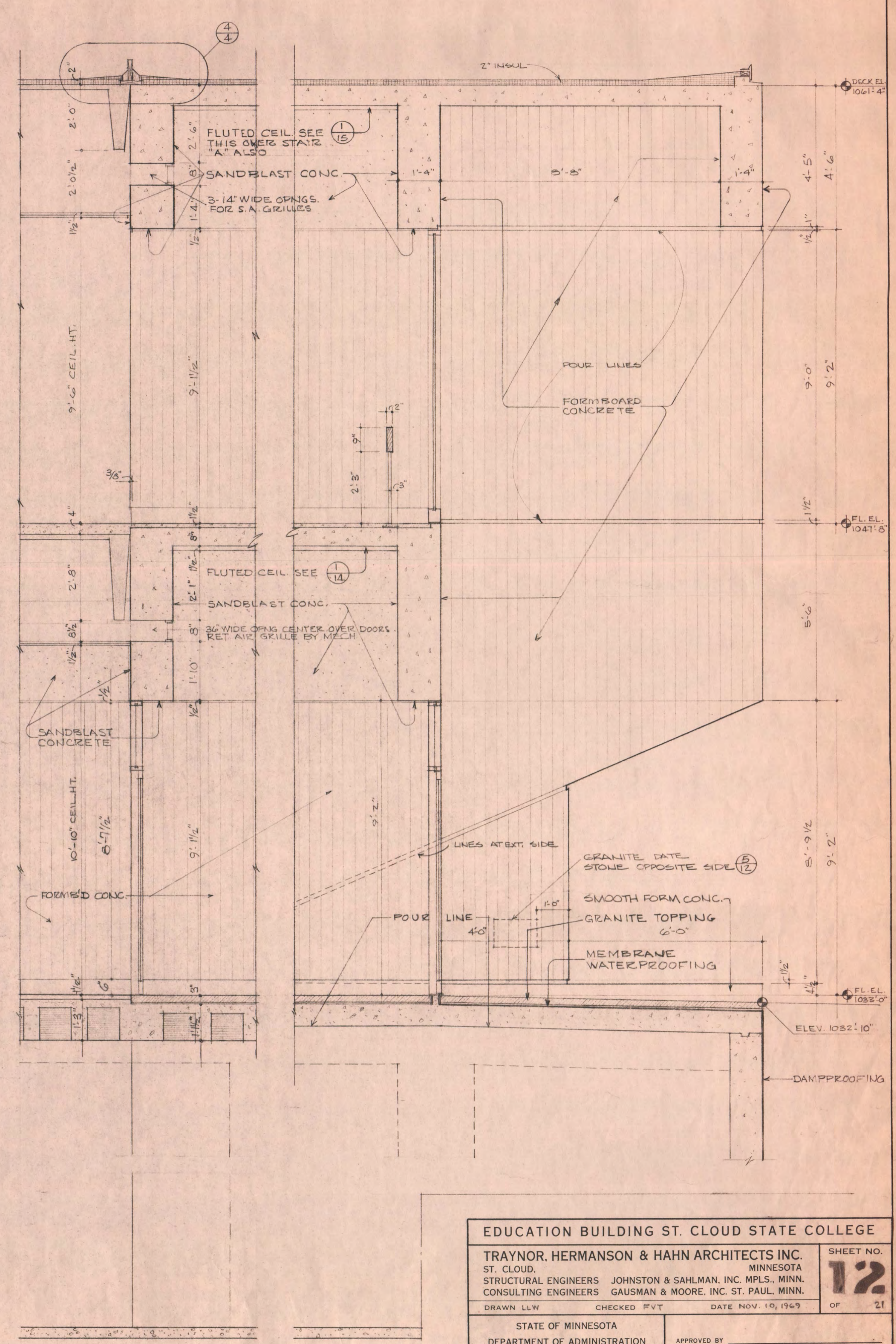
8 OVERHEAD DOOR
 11 1/2" x 1'-0"



1 SECTION THRU WEST ENTRY
1/2" = 1'-0"



2 SECTION THRU DEPRESSED FLR.
1/2" = 1'-0"



3 SECTION THRU EAST ENTRY
1/2" = 1'-0"

4 SCUPPER DETAILS
1" = 1'-0"

5 GRANITE DATESTONE DETAIL
1/2" = 1'-0"

EDUCATION BUILDING ST. CLOUD STATE COLLEGE		SHEET NO.
TRAYNOR, HERMANSON & HAHN ARCHITECTS INC. ST. CLOUD, MINNESOTA		12
STRUCTURAL ENGINEERS JOHNSTON & SAHLMAN, INC. MPLS., MINN. CONSULTING ENGINEERS GAUSMAN & MOORE, INC. ST. PAUL, MINN.		OF 21
DRAWN LLW	CHECKED FVT	DATE NOV. 10, 1969
STATE OF MINNESOTA DEPARTMENT OF ADMINISTRATION ARCHITECTURAL AND ENGINEERING DIVISION ROOM 6-10 ADMINISTRATION BUILDING ST. PAUL 55101	APPROVED BY _____ APPROVED BY _____ APPROVED BY _____	COMMISSIONER OF ADMINISTRATION AN AUTHORIZED SIGNATURE
STATE PROJECT NO. 6360150		