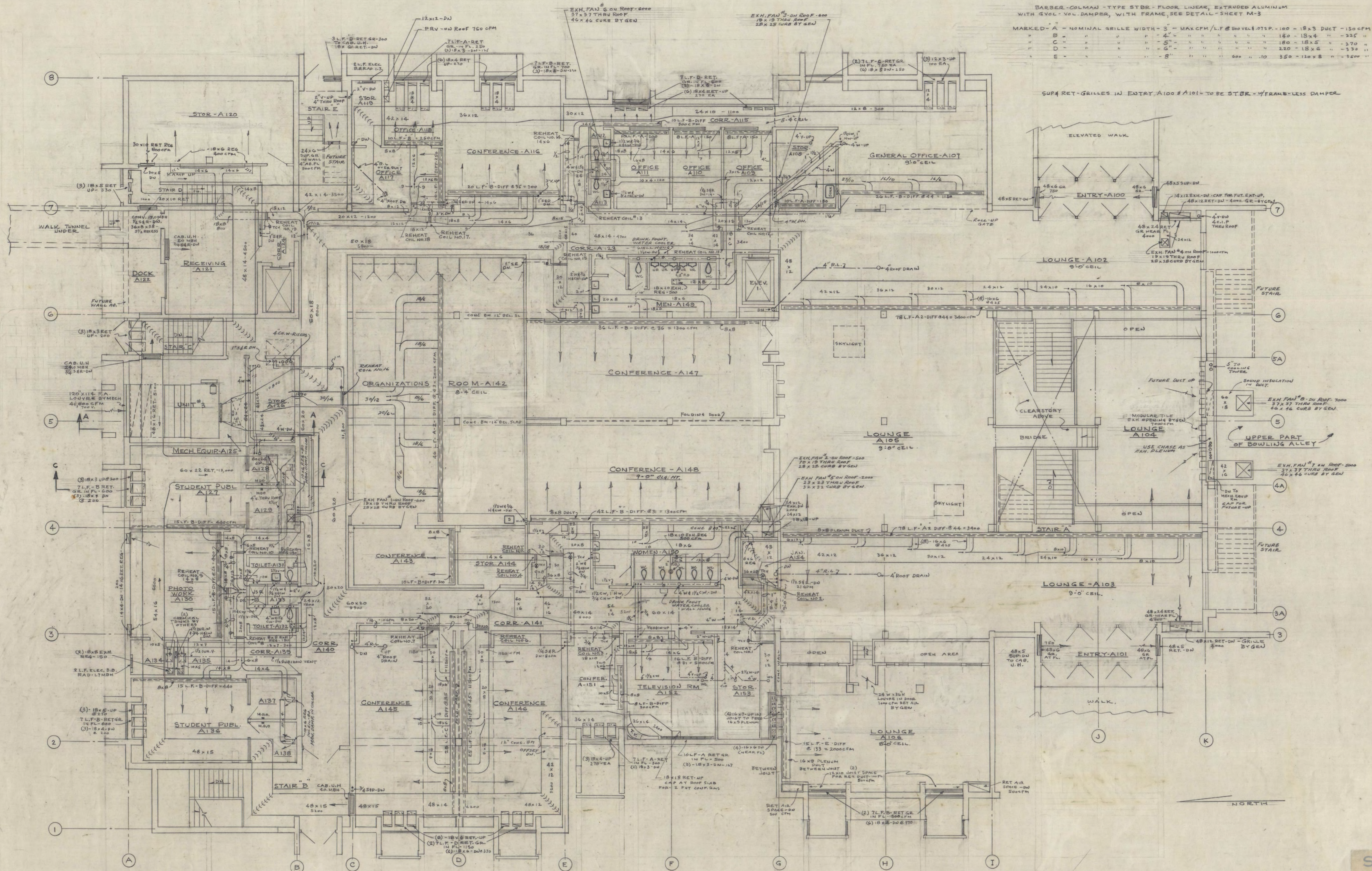
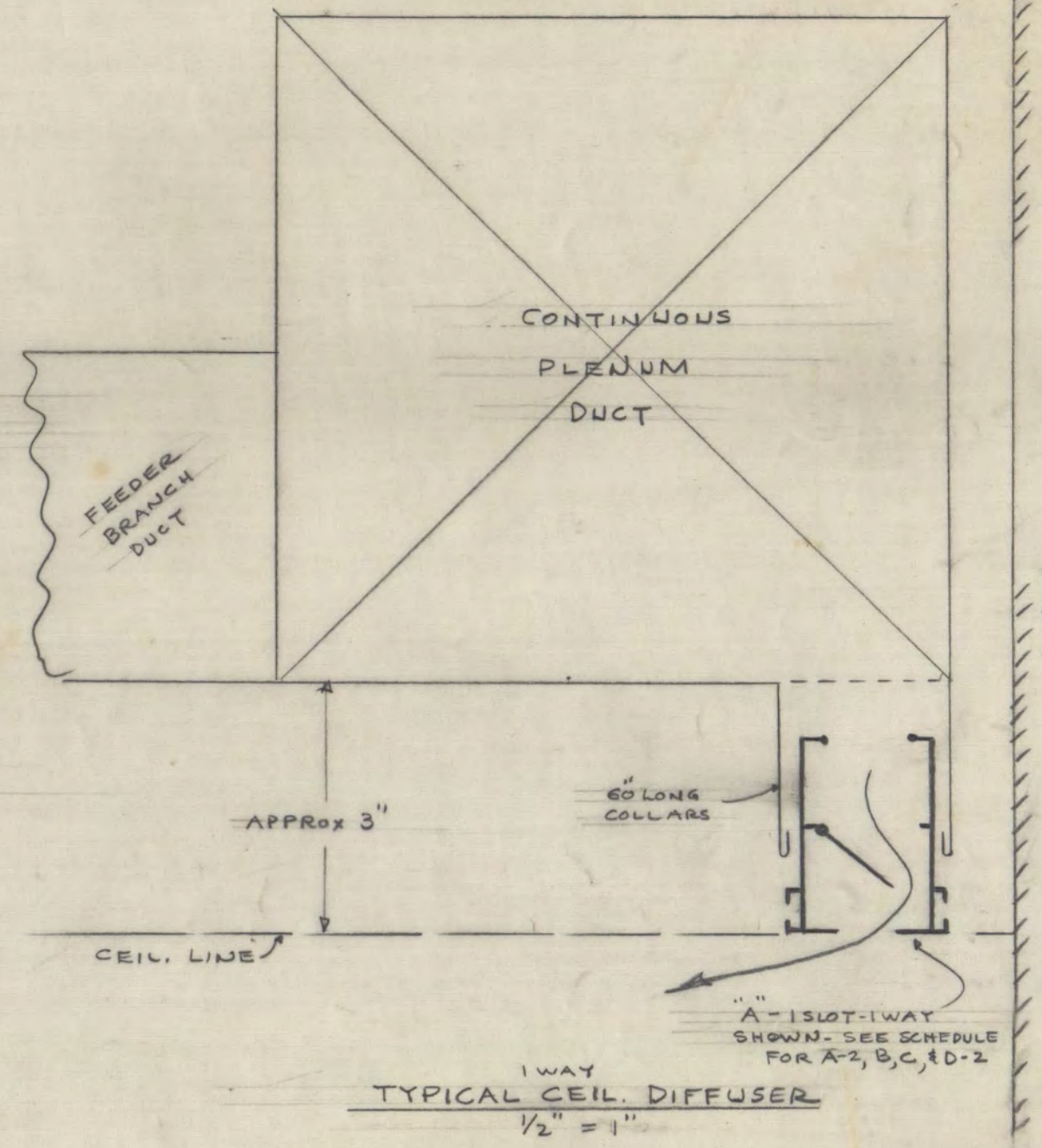


SUPPLY DIFFUSER SCHEDULE
 BARBER-COLMAN - TYPE CLA - CEIL. LINEAR, EXTRUDED ALUMINUM
 LESS VOL. DAMPER, BLADE, STYLE "B" - RECESSED MOUNT, WITH FRAME 1/2" SLOTS

MARKED - A	ISLOT - 1WAY	MAX CFM - 20	MAX THROW - 12 FT	NOMINAL DUCT 2"	DIFF. WIDTH - 15"
A-1	2"	40	12	3"	2 7/8"
B	1"	40	12	3"	2 7/8"
C	1"	40	12	3"	2 7/8"
D	1"	40	12	3"	2 7/8"
E	1"	40	12	3"	2 7/8"

RETURN GRILLE SCHEDULE
 BARBER-COLMAN - TYPE STBR - FLOOR LINEAR, EXTRUDED ALUMINUM
 WITH 4 VOL. DAMPER, WITH FRAME, SEE DETAIL - SHEET M-3

MARKED - A	NOMINAL GRILLE WIDTH - 3"	MAX CFM / L.F. @ 0.05 P.S.F.	100 - 18 X 3 DUCT	150 CFM
B	4"	150	180 - 18 X 4	225
C	5"	200	180 - 18 X 5	270
D	6"	250	250 - 18 X 6	330
E	8"	300	300 - 18 X 8	420



FIRST FLOOR PLAN
 SCALE 1/8" = 1'-0"

ALL CEIL HTS - ALL ROOMS
 8'-4" EXCEPT RMS MARKED
 OTHERWISE

**STUDENT UNION
 FOR ST. CLOUD STATE COLLEGE**

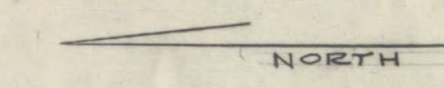
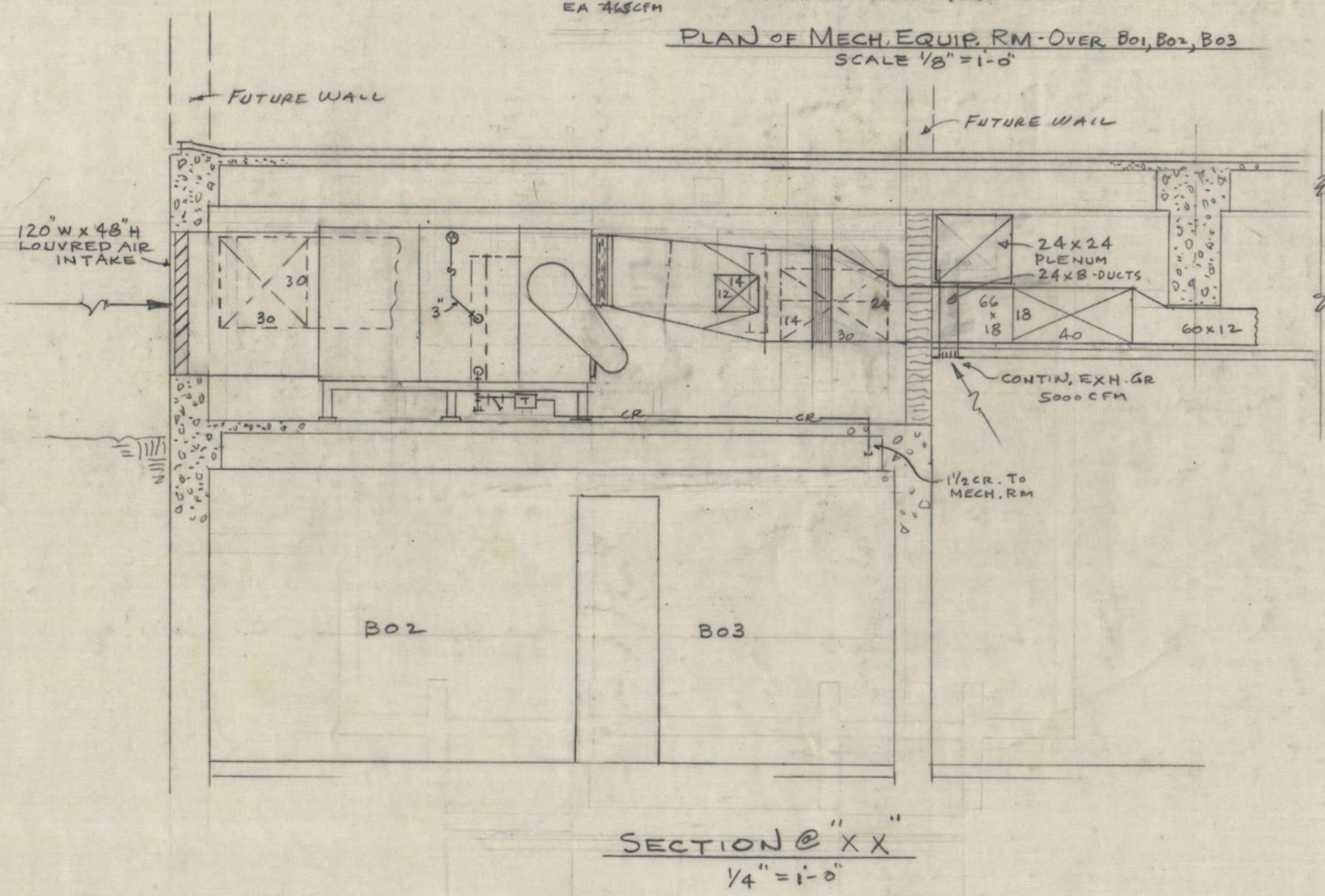
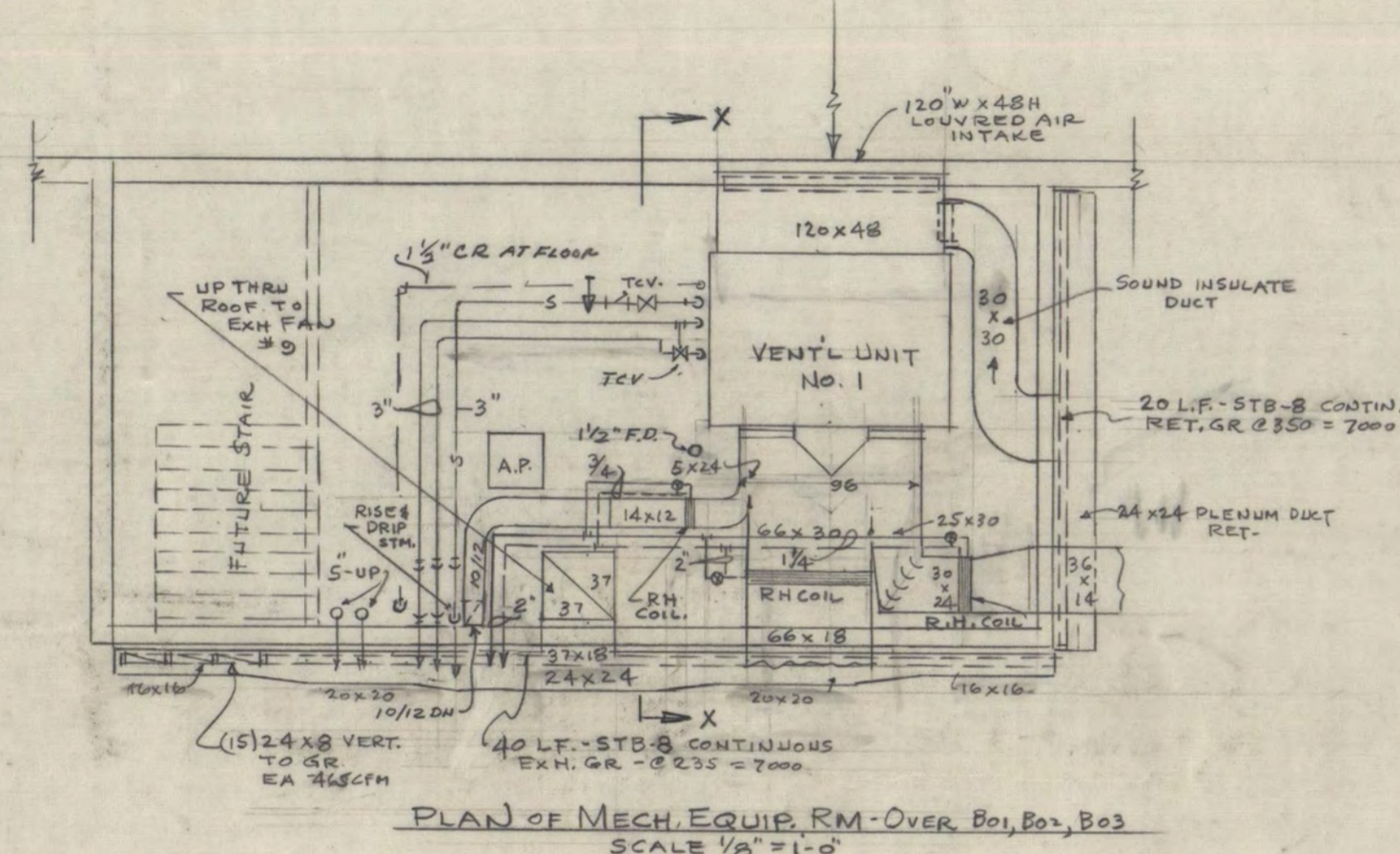
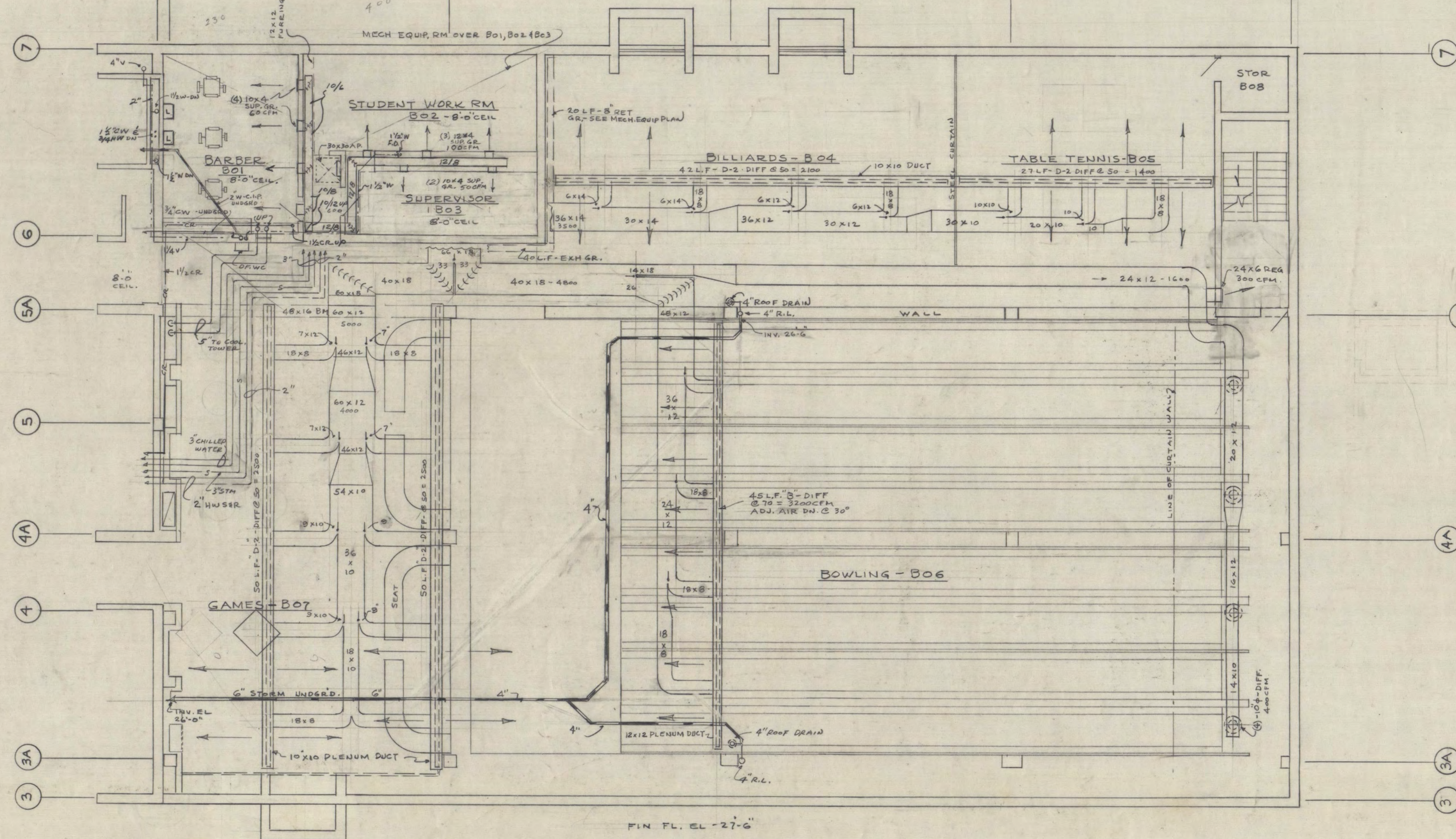
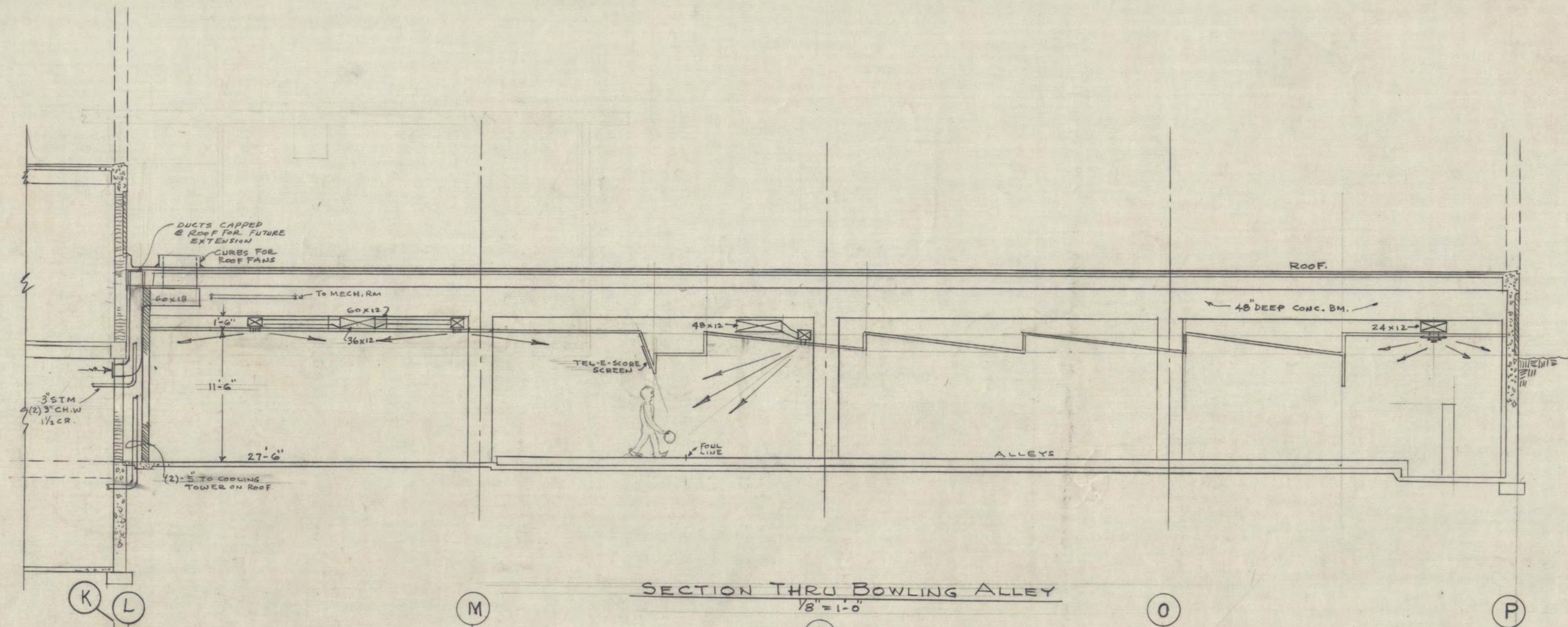
STATE COLLEGE BOARD
 STATE OF MINNESOTA
 ST. PAUL, MINNESOTA

TRAYNOR AND HERMANSON ARCHITECTS
 ST. CLOUD, MINNESOTA
 STRUCTURAL ENGINEERS - JOHNSTON & SAHLMAN, MINNEAPOLIS
 CONSULTING ENGINEERS - ORR, SHELEN, MAYERSON
 ASSOCIATED INC., MINNEAPOLIS

APPROVED BY: _____ DATE: 10-12-64
 APPROVED BY: _____ DRAWN: KWM
 APPROVED BY: _____ CHECKED: VES

FIRST FLOOR PLAN - LOUNGE WING

SHEET NO.
M-4
 MECHANICAL
 OF 9
 PROJECT NO.
E-2



STUDENT UNION
FOR ST. CLOUD STATE COLLEGE

STATE COLLEGE BOARD
STATE OF MINNESOTA
ST. PAUL, MINNESOTA

TRAYNOR AND HERMANSON ARCHITECTS
ST. CLOUD, MINNESOTA
STRUCTURAL ENGINEERS: JOHNSTON & SAHLMAN MINNAPOLIS
CONSULTING ENGINEERS: ORR, SHELEN, WATSON
ASSOCIATED INC. MINNAPOLIS

APPROVED BY _____ DATE 10-12-64
APPROVED BY _____ DRAWN KWM
APPROVED BY _____ CHECKED VES

FLOOR PLAN - BOWLING ALLEY

SHEET NO.

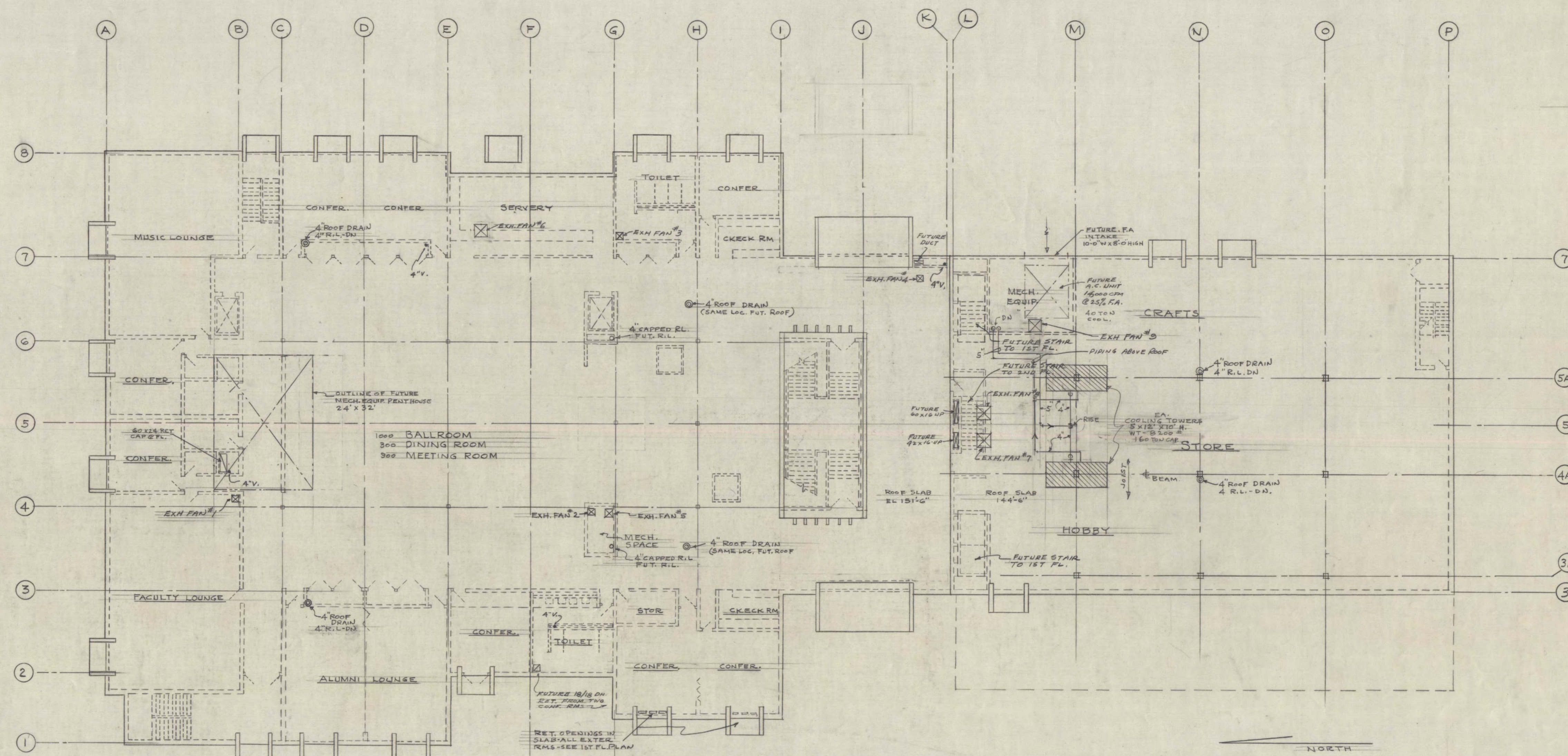
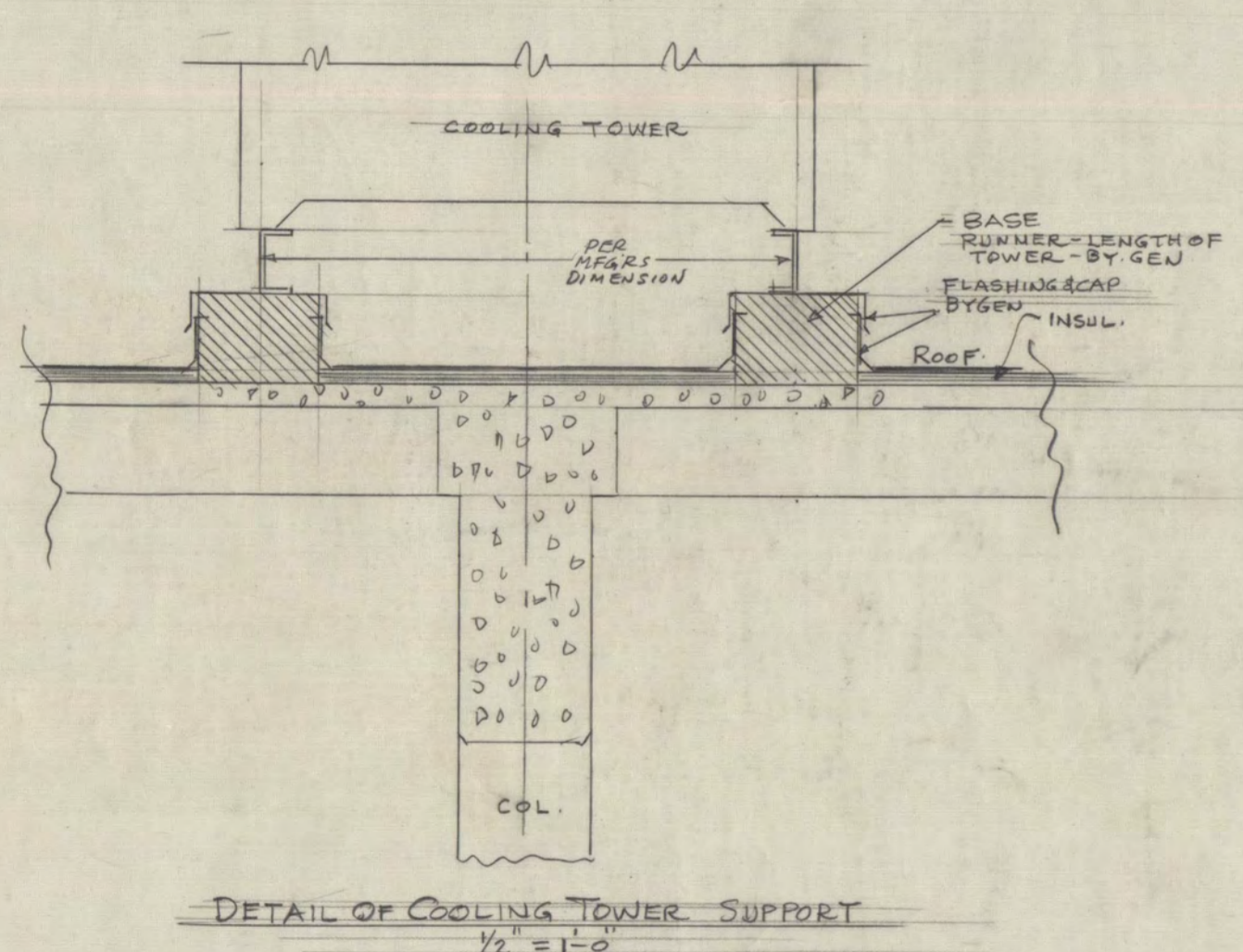
M-5

MECHANICAL

OF 9

PROJECT NO.

E-2



NOTE:
THE FOLLOWING VENT. UNITS WILL BE IN PENTHOUSE IN FUTURE:
EXTERIOR RMS UNIT - 16,000 CFM @ 20% PA. - 12,000 RET. - 40 TON DWT
BALLROOM UNIT - 15,000 " " 50% " " 7,500 " " 40 TON " "

**STUDENT UNION
FOR ST. CLOUD STATE COLLEGE**

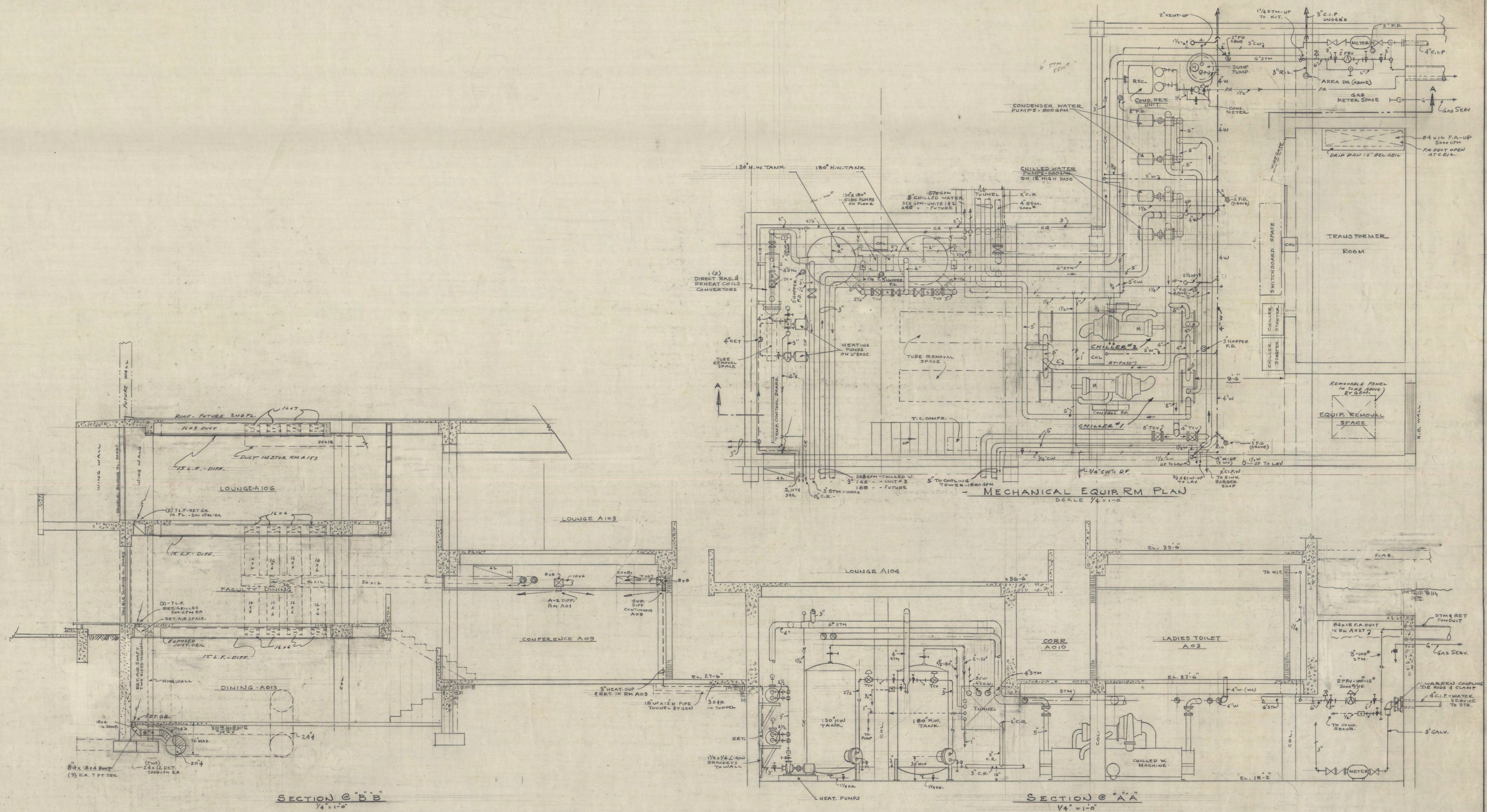
STATE COLLEGE BOARD
STATE OF MINNESOTA
ST. PAUL MINNESOTA

TRAYNOR AND HERMANSON ARCHITECTS
ST. CLOUD, MINNESOTA
STRUCTURAL ENGINEERS - JOHNSTON & AHLHAN MINNEAPOLIS
CONSULTING ENGINEERS - DR. SHELEN MAERON
ASSOCIATES, INC. MINNEAPOLIS

APPROVED BY _____ DATE 10-12-64
APPROVED BY DRAWN KWM
APPROVED BY CHECKED YES

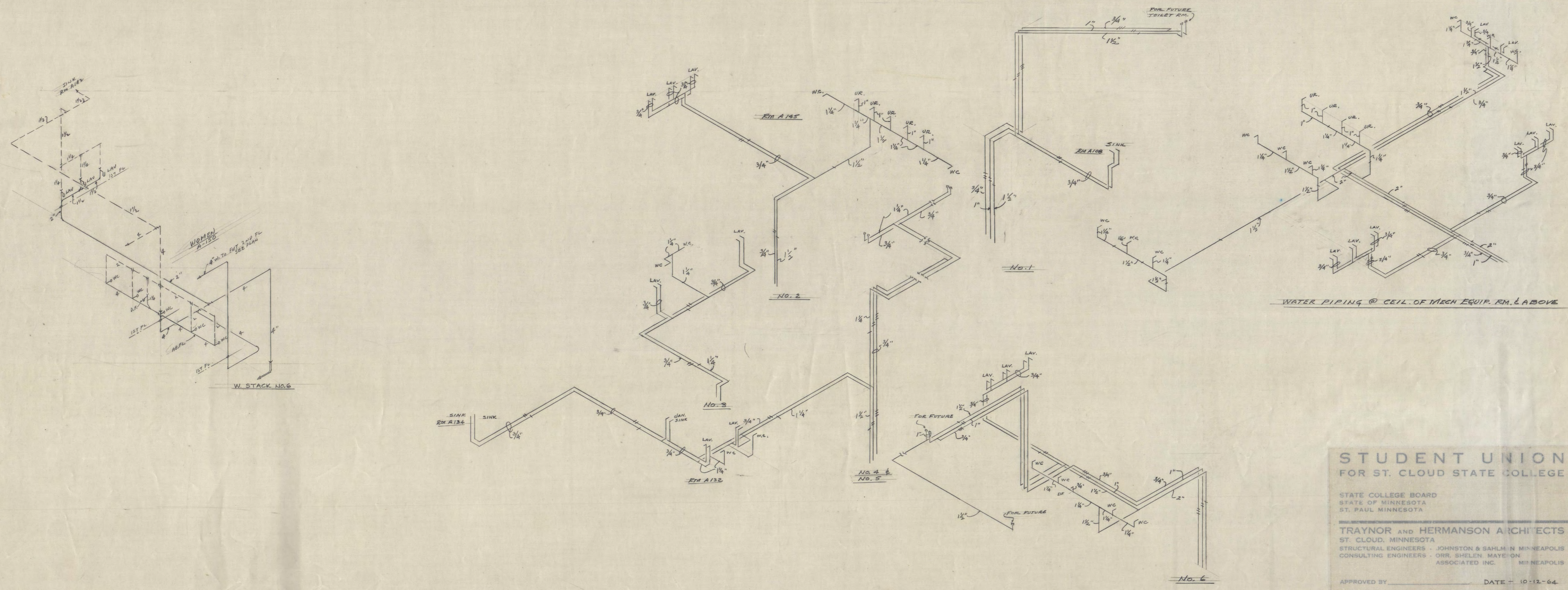
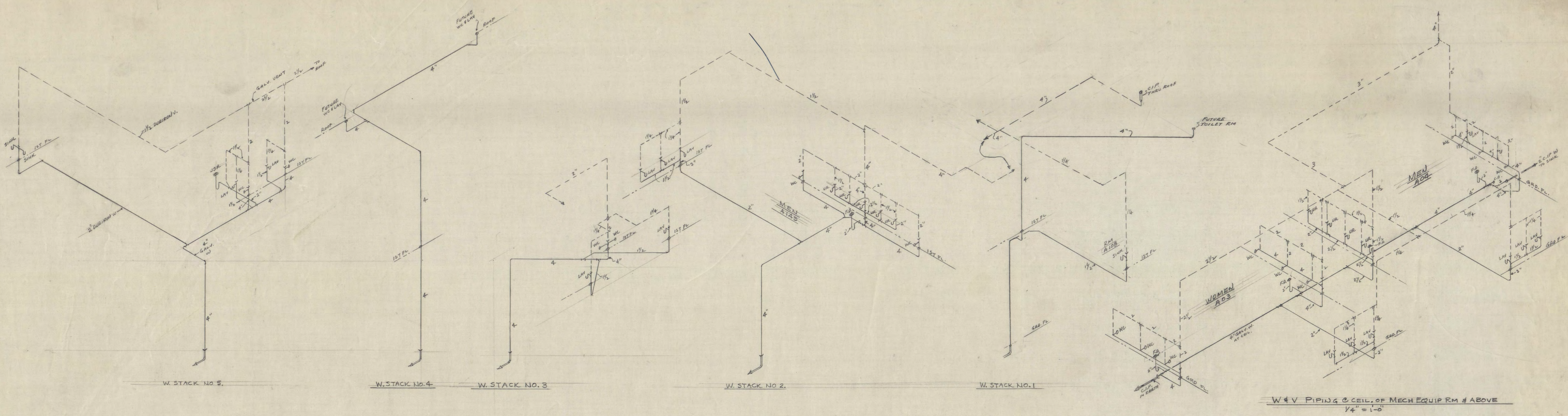
SHEET NO. M-6
MECHANICAL
OF 9
PROJECT NO. E-2

ROOF PLAN & FUTURE 2ND FL PLAN



STUDENT UNION FOR ST. CLOUD STATE COLLEGE		SHEET NO.
STATE COLLEGE BOARD STATE OF MINNESOTA ST. PAUL MINNESOTA		M-7
TRAYNOR AND HERMANSON ARCHITECTS ST. CLOUD, MINNESOTA STRUCTURAL ENGINEERS - JOHNSTON & SAHLMAN MINNEAPOLIS CONSULTING ENGINEERS - ORR, SHELEN, MATYSON ASSOCIATED INC. MINNEAPOLIS		MECHANICAL
APPROVED BY _____	DATE 10-12-64	OF 3 PROJECT NO.
APPROVED BY _____	DRAWN KWM	E-2
APPROVED BY _____	CHECKED YES	
MECH. EQUIP. RM & SECTIONS & DETAIL		

Handwritten initials and date: JCB 10/12/64



**STUDENT UNION
FOR ST. CLOUD STATE COLLEGE**

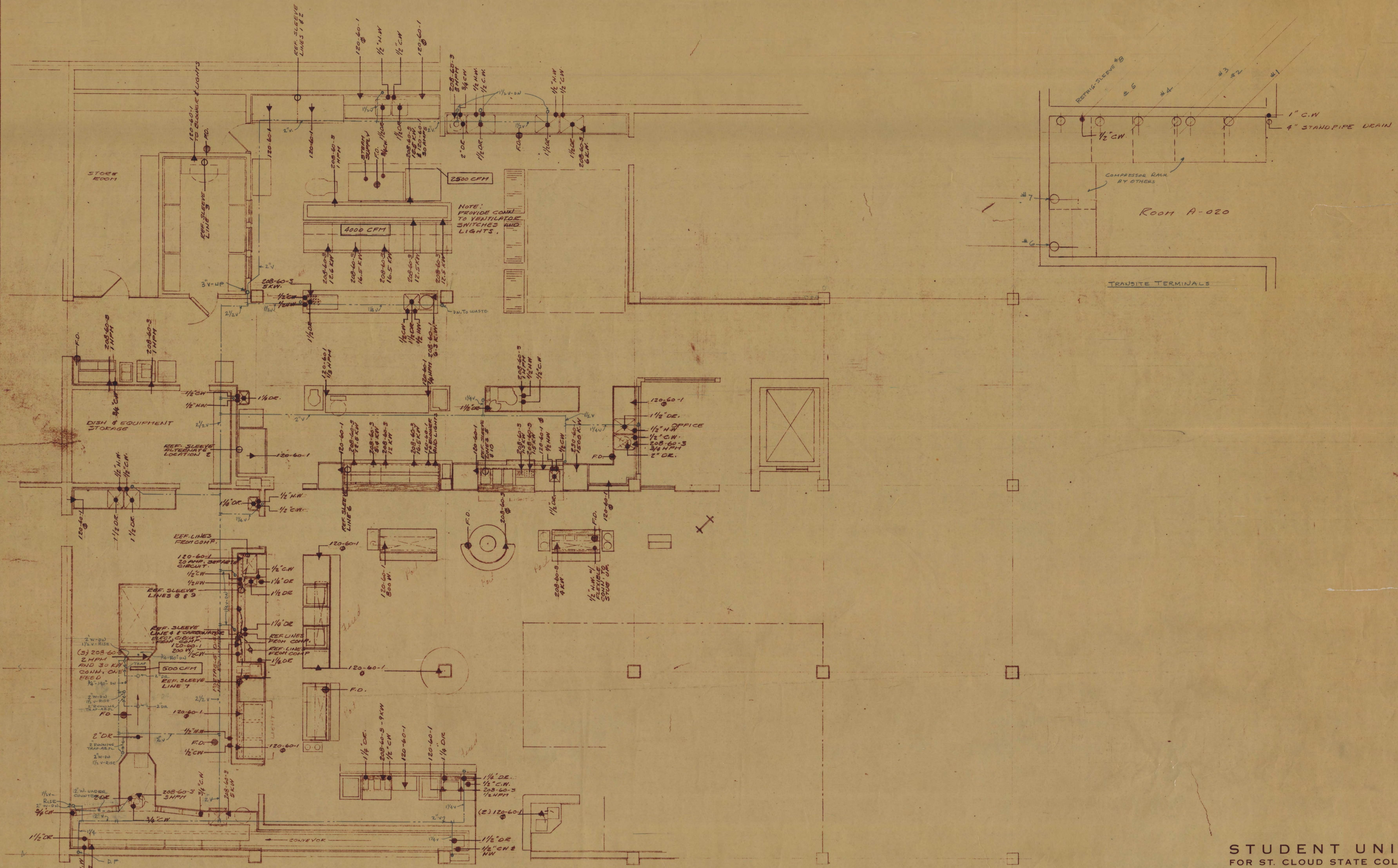
STATE COLLEGE BOARD
STATE OF MINNESOTA
ST. PAUL MINNESOTA

TRAYNOR AND HERMANSON ARCHITECTS
ST. CLOUD, MINNESOTA
STRUCTURAL ENGINEERS - JOHNSTON & SAHLIN MINNEAPOLIS
CONSULTING ENGINEERS - ORR, SHELEN, MAYEON
ASSOCIATED INC. MINNEAPOLIS

APPROVED BY: _____ DATE: 10-12-64
DRAWN BY: KWM
CHECKED BY: _____ YES

PLUMBING PIPING DIAGRAMS

SHEET NO. **M-8**
OF 9
PROJECT NO. **E-2**



**STUDENT UNION
FOR ST. CLOUD STATE COLLEGE**

STATE COLLEGE BOARD
ST. CLOUD, MINNESOTA
ST. PAUL, MINNESOTA

TRAYNOR AND HERMANSON ARCHITECTS
ST. CLOUD, MINNESOTA
STRUCTURAL ENGINEERS - JOHNSTON & SAHLMAN MINNEAPOLIS
CONSULTING ENGINEERS - ORR, SHELEN, MAYERON
ASSOCIATED INC. MINNEAPOLIS

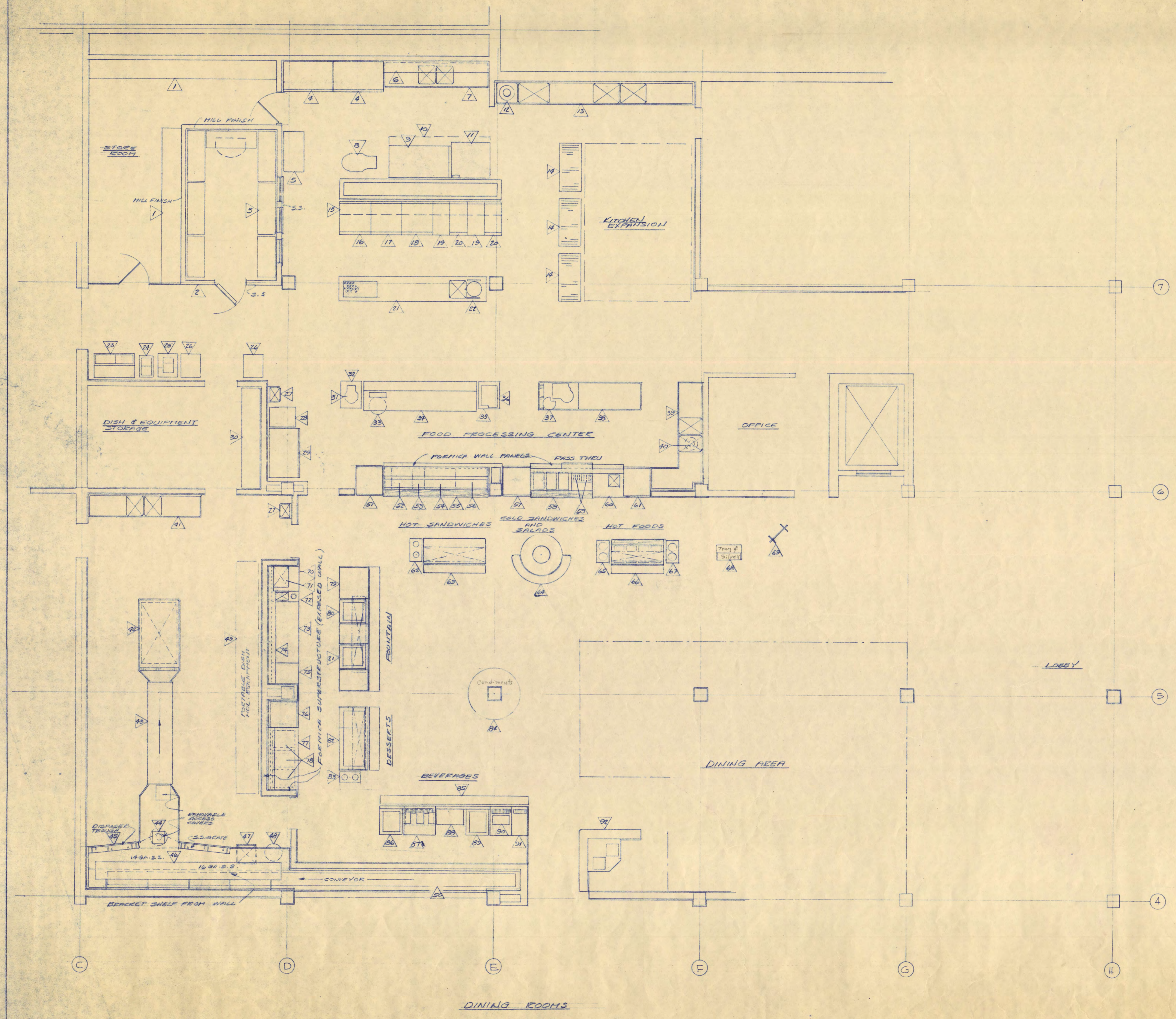
APPROVED BY _____ DATE 10-12-64
APPROVED BY _____ DRAWN KWM
APPROVED BY _____ CHECKED VES

KITCHEN PLUMBING - 1/4\"/>

SHEET NO.
M-9
MECHANICAL

OF 9
PROJECT NO.

E-2



ITEM	QUANTITY	DESCRIPTION	REMARKS
1	1 (Group)	Storeroom shelving	
2	1	Walk-in cooler	
3	1 (Group)	Cooler shelving	
4	2	Reach-in freezers	
5	1	Portable work counter	
6	1	Overhead cabinet	
7	1	Work counter	
8	1	60 quart food mixer	
9	1	Comp. steamer-kettle unit	
10	1	Ventilator	
11	1	Oven section	
12	1	Garbage disposer	
13	1	Pot and pan sink	
14	3	Pot and pan racks	
15	1	Ventilator	
16	1	Hot top range	
17	1	Open grate range	
18	1	Fry top range	
19	2	Spreader plates	
20	2	Deep fat fryers	
21	1	Work counter with Bainmarie	
22	1	20 quart tilting kettle	
23	1	Flaked ice machine	
24	1	Portable ice bin	
25	1	Can and bottle crusher	
26	2	Portable food conveyors	
27	2	Lavatories	Mechanical contractor
28	1	Portable bread cabinet	
29	1	Freezer item A temporary location	
30	1 (Group)	Dish storage shelving	
31	1	20 quart food mixer	
32	1	Portable mixer stand	
33	1	Refuse container	
34	1	Work counter	
35	1	Portable slicer stand	
36	1	Slicer	
37	1	Food cutter	
38	1	Preparation counter	
39	1	vegetable prep. counter	
40	1	Garbage disposal	
41	1	Sink unit	
42	1	Clean dish table	
43	1	Dishwashing machine	
44	1	Garbage disposal	
45	1	Soiled dish table	
46	1	Stripping shelf	
47	1	Portable sink	
48	1 (Group)	Paper container	
49	1	Dish handling equipment	
50	1	Dish conveyor	
51	1	Freezer	
52	1	Deep fat fryer	
53	1	Hot plate	
54	1	Griddle	
55	1	Equipment stand	
56	1	Char broiler	
57	1	Refrigerator	
58	1	Sandwich table	
59	2	Bread toasters	
60	1	Utility unit with sink	
61	1	Hot food cabinet	
62	1	Plate dispenser	
63	1	Serving unit	
64	1	Revolving food display	
65	1	Plate dispenser	
66	1	Hot food unit	
67	1	Plate dispenser	
68	1	Tray and silver dispenser	
69	1	Menu selector	By owner
70	1	Shelving unit	
71	1	Shake machine	
72	1	Sink unit	
73	1	Fountain with drink dispenser	
74	1	Storage shelf	
75	1	Ice dispensing unit	
76	1	Refrigerator	
77	1	Work counter	
78	3	Pastry storage cabinet	
79	1	Serving counter	
80	1	Glass dispenser	
81	1	Glass dispenser	
82	1	Desert counter	
83	1	Plate dispenser	
84	1	Condiment station	
85	1	Beverage counter	
86	1	Cup dispenser	
87	1	Coffee station	
88	1	Milk dispenser	
89	1	Glass dispenser	
90	1	Juice dispenser	
91	1	Water dispenser	
92	1	Cashiers stand	

**STUDENT UNION
FOR ST. CLOUD STATE COLLEGE**

STATE COLLEGE BOARD
STATE OF MINNESOTA
ST. PAUL MINNESOTA

TRAYNOR AND HERMANSON ARCHITECTS
ST. CLOUD, MINNESOTA
STRUCTURAL ENGINEERS - JOHNSTON & SAHLMAN MINNEAPOLIS
CONSULTING ENGINEERS - ORR, SHELLEN, MAYERSON ASSOCIATED INC. MINNEAPOLIS

APPROVED BY _____ DATE 10-12-64
APPROVED BY _____ DRAWN _____
APPROVED BY _____ CHECKED _____

SHEET NO.
K1
OF 1
PROJECT NO.
E-2