

TYPICAL WALL SECTION AT SEALING WALL 2 STORIES ABOVE GRADE 1/2" x 1'-0"

TYPICAL WALL SECTION AT NON SEALING WALL 2 1/2 STORIES ABOVE GRADE 1/2" x 1'-0"

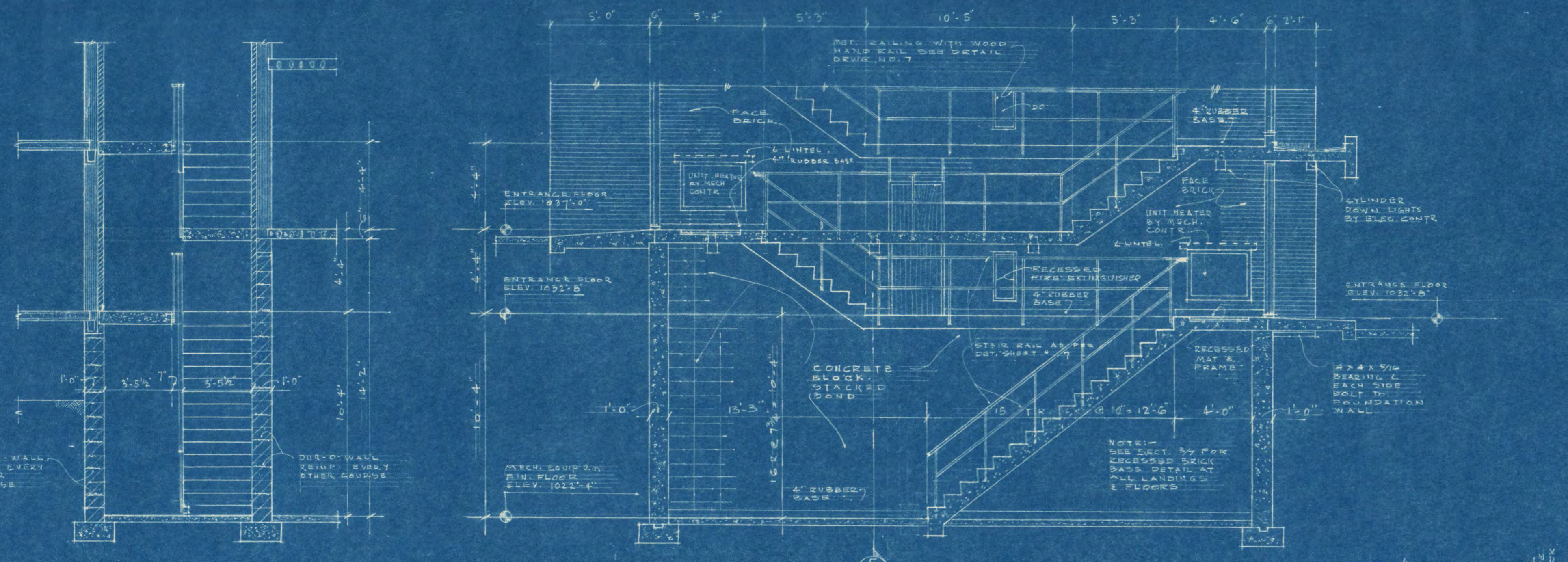
TYPICAL WALL SECTION AT BALCONIES 1 1/2 STORIES ABOVE GRADE 1/2" x 1'-0"

TYPICAL WALL SECTION AT BALCONIES 1 1/2 STORIES ABOVE GRADE 1/2" x 1'-0"

WALL SECTION AT BALCONIES 3 STORIES ABOVE GRADE 1/2" x 1'-0"

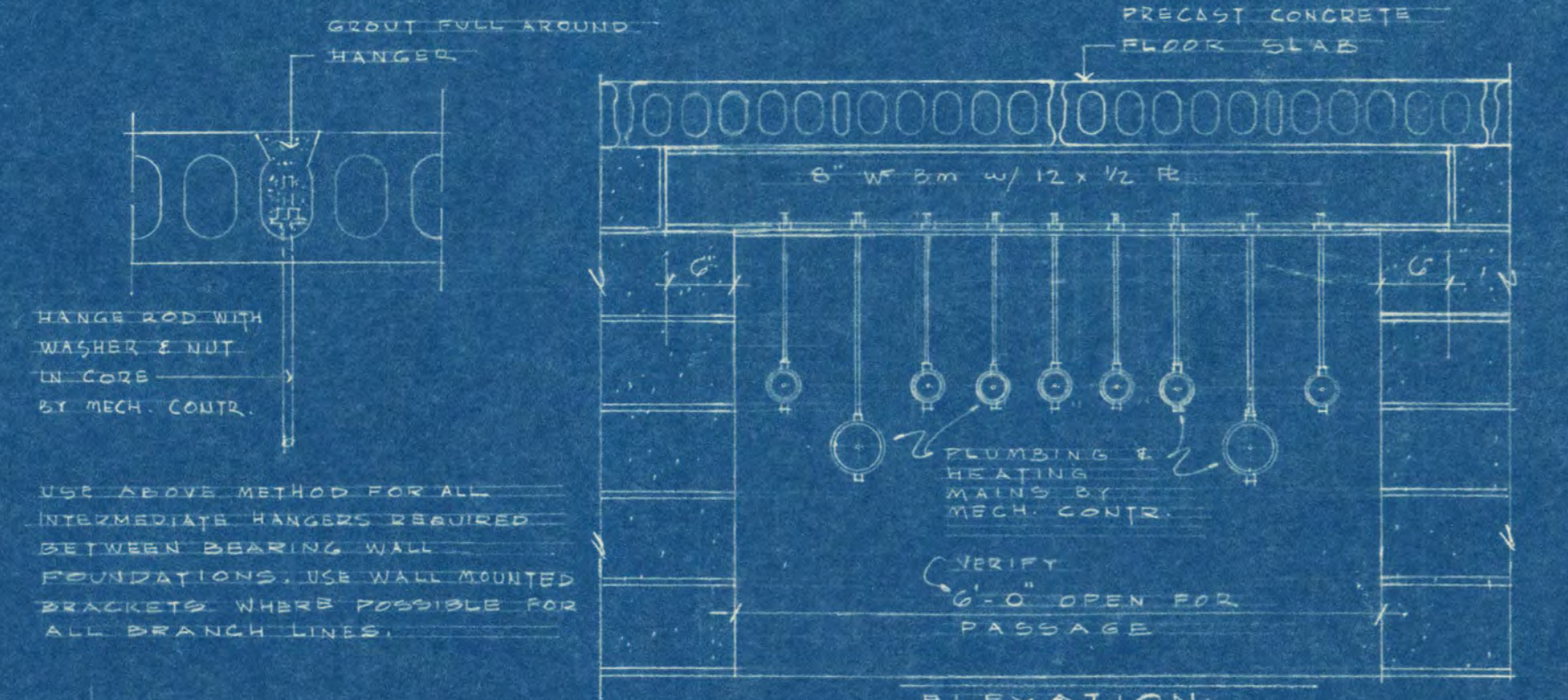
WALL SECTION AT BALCONIES 3 1/2 STORIES ABOVE GRADE 1/2" x 1'-0"

WALL SECTION AT MECH. ROOM 3 1/2 STORIES ABOVE GRADE 1/2" x 1'-0"

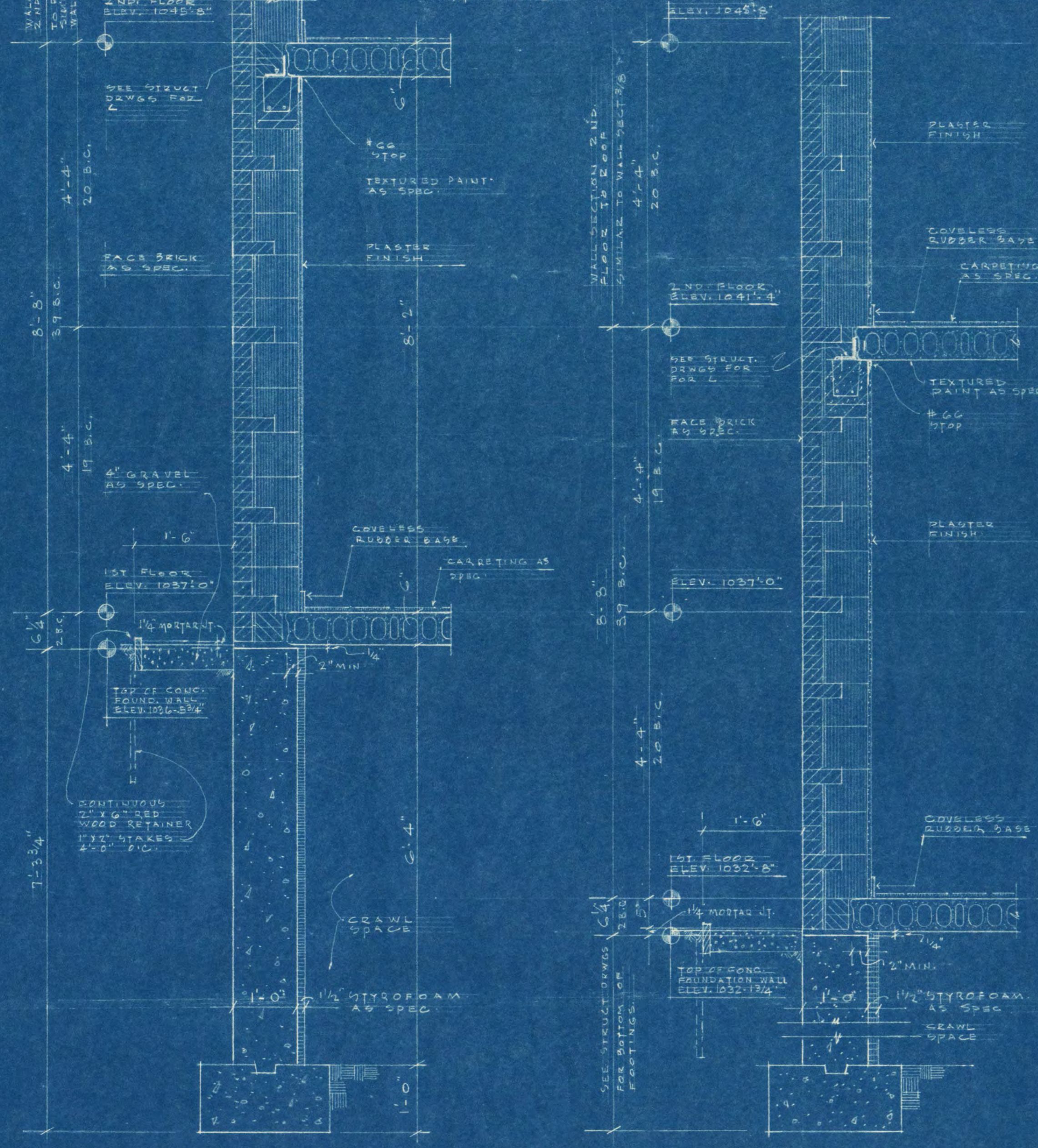


CROSS SECTION
STAIR TO BSMT. MECH. RM.
1/4" = 1'-0"

PARTIAL SECTION THRU STAIR "F"
STAIR TO BASEMENT MECHANICAL ROOM.
1/4" = 1'-0"



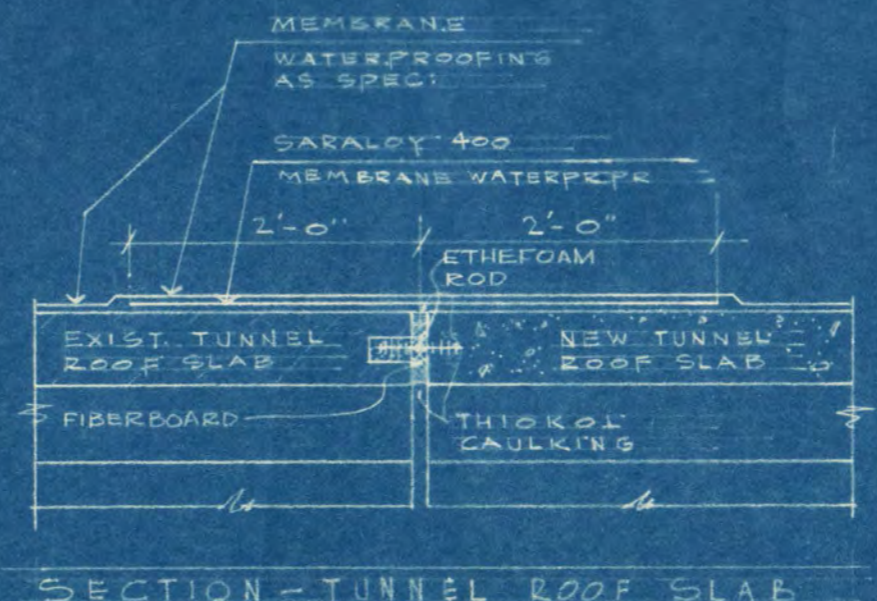
MECHANICAL PIPING SUSPENSION SYSTEM TO BE
USED IN CRAWL SPACES AT BEARING WALL FOUNDATIONS
3/4" = 1'-0"



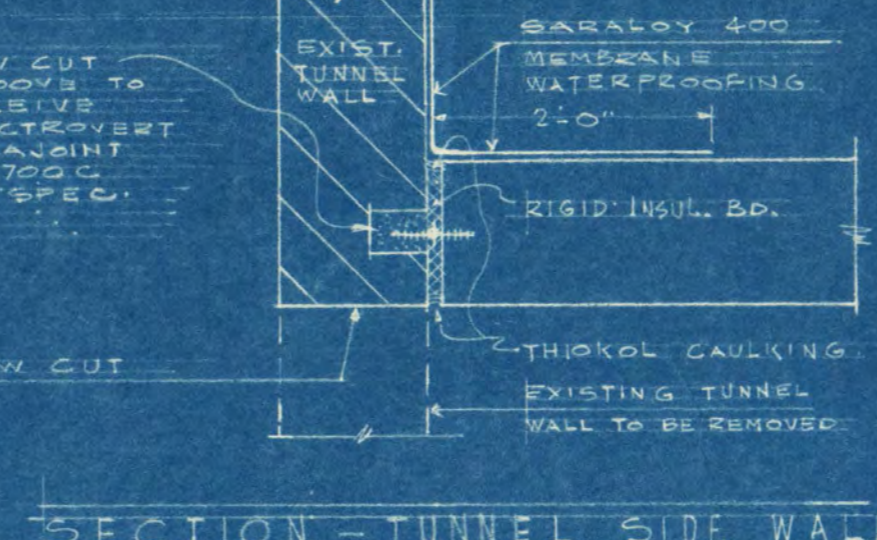
TYPICAL WALL SECTION
AT NON BEARING WALL
2 STORIES ABOVE GRADE
3/4" = 1'-0"

TYPICAL WALL SECTION
AT NON BEARING WALL
3 STORIES ABOVE GRADE
3/4" = 1'-0"

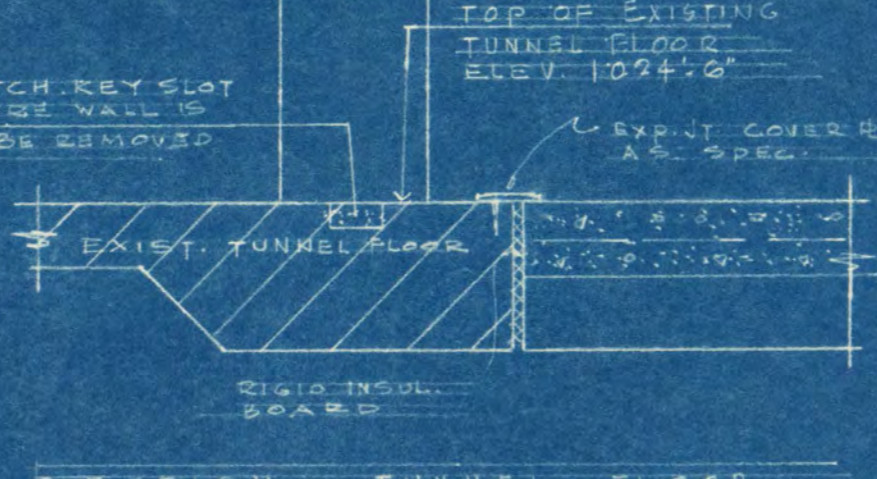
TYPICAL WALL SECTION
LOAD BEARING PARTITION
3/4" = 1'-0"



SECTION - TUNNEL ROOF SLAB

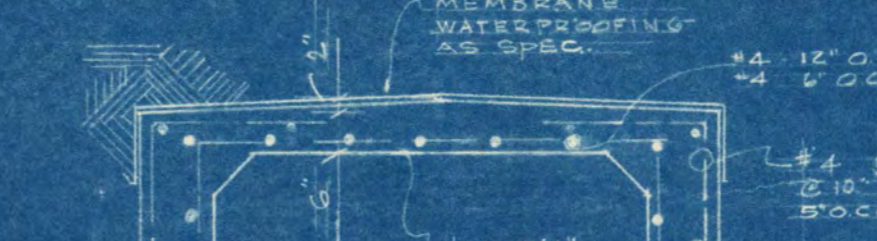


SECTION - TUNNEL SIDE WALL

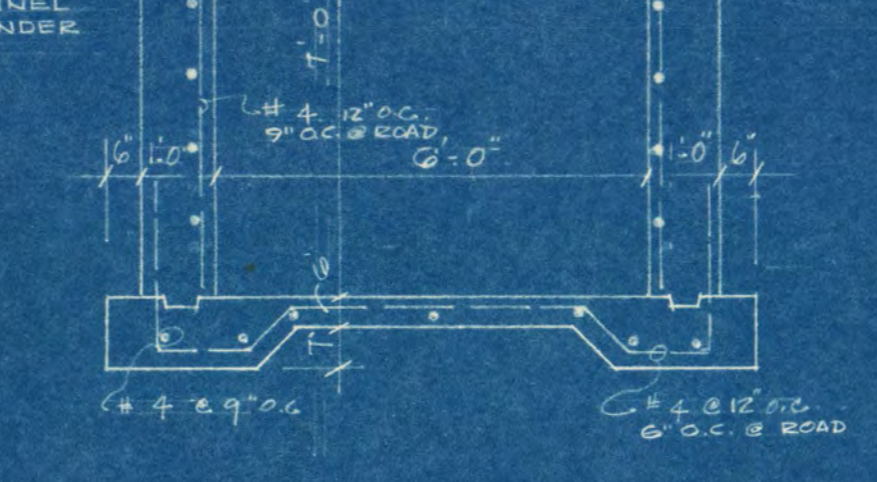


SECTION - TUNNEL FLOOR

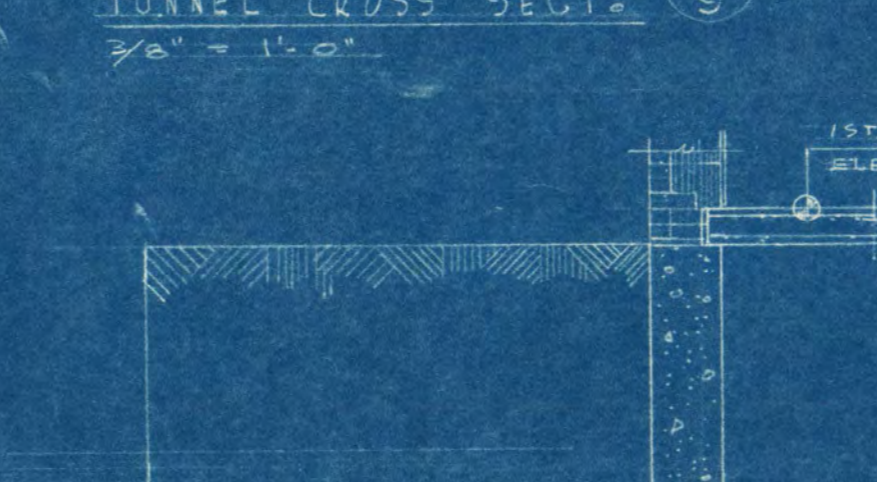
SECTION 5 - INTERSECTION
OF NEW & EXISTING SERVICE TUNNELS.



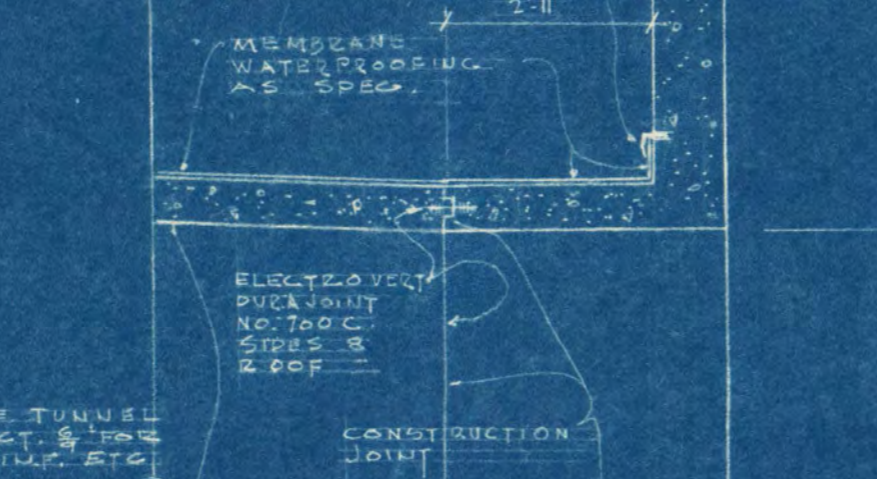
TYPICAL SERVICE
TUNNEL CROSS SECT.
3/8" = 1'-0"



TYPICAL CROSS SECT.
3/8" = 1'-0"



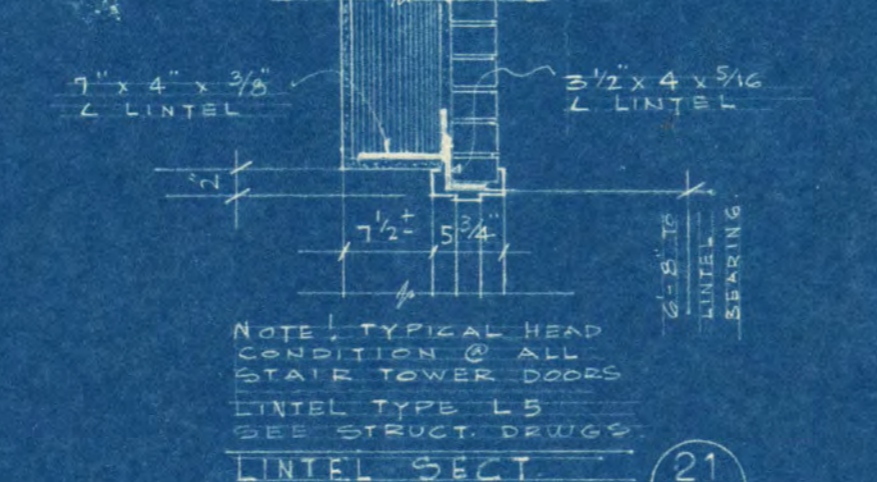
SECTION AT INTERSECTION
OF TUNNEL & BUILDING.
3/8" = 1'-0"



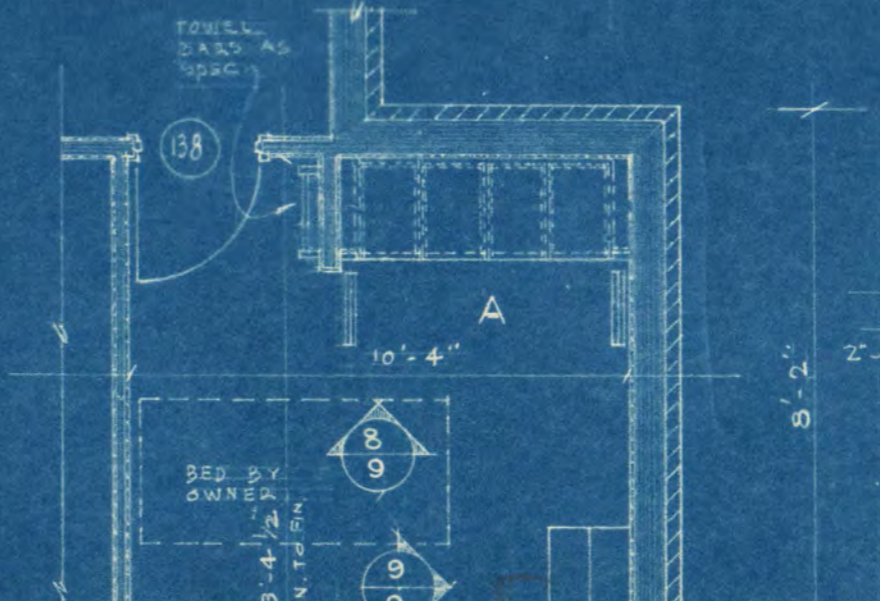
FOUNDATION WALL
EXPANSION JT. DET.
3/4" = 1'-0"



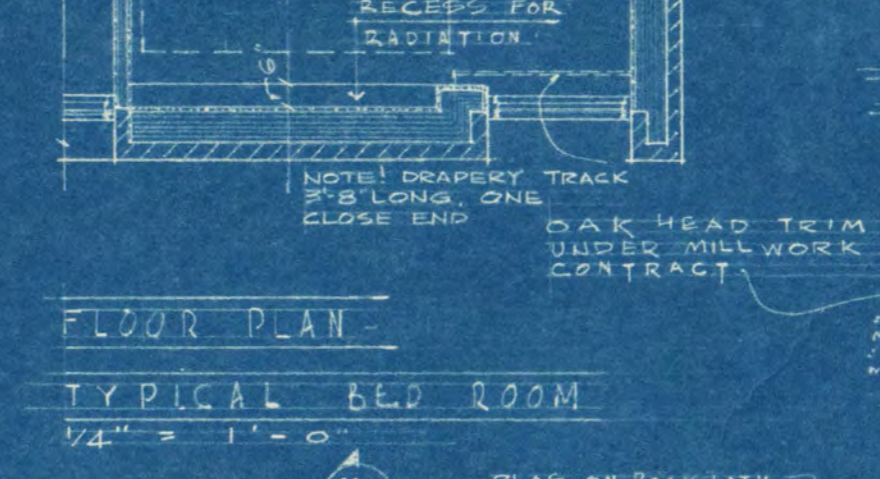
FOUNDATION WALL
EXPANSION JT. DET.
3/4" = 1'-0"



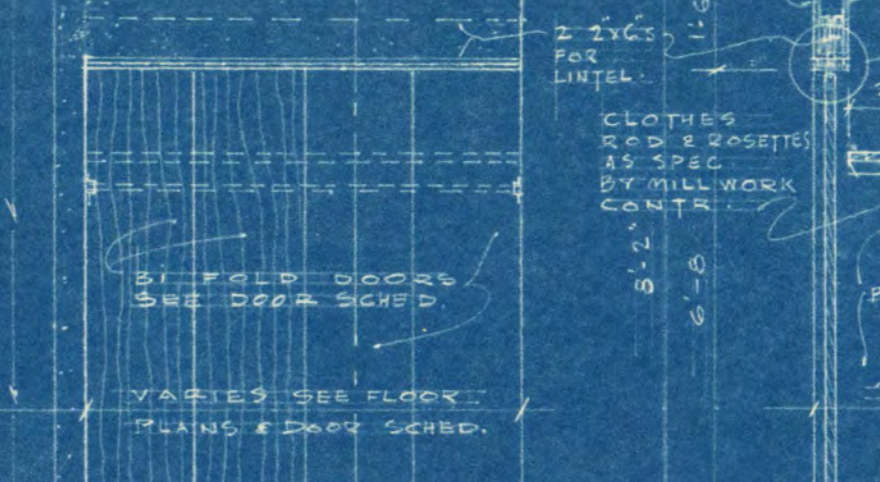
DETAIL OF ROOF CURB
3/4" = 1'-0"



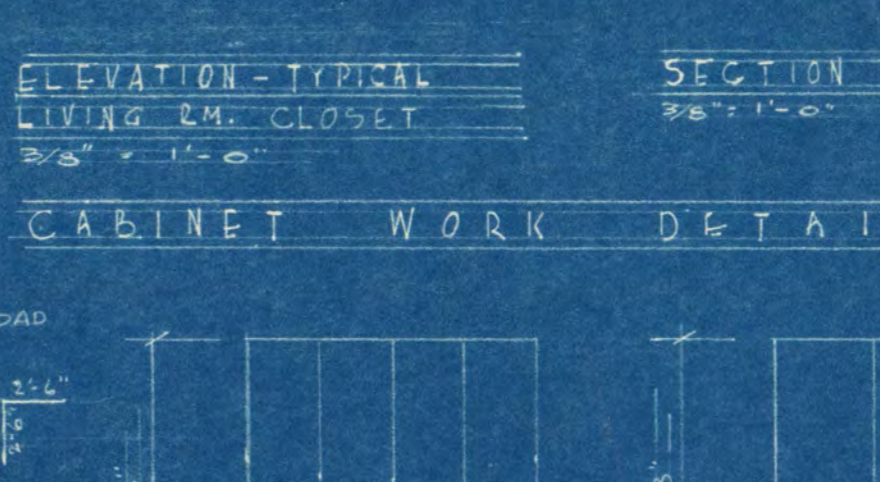
FLOOR PLAN
TYPICAL BED ROOM
1/4" = 1'-0"



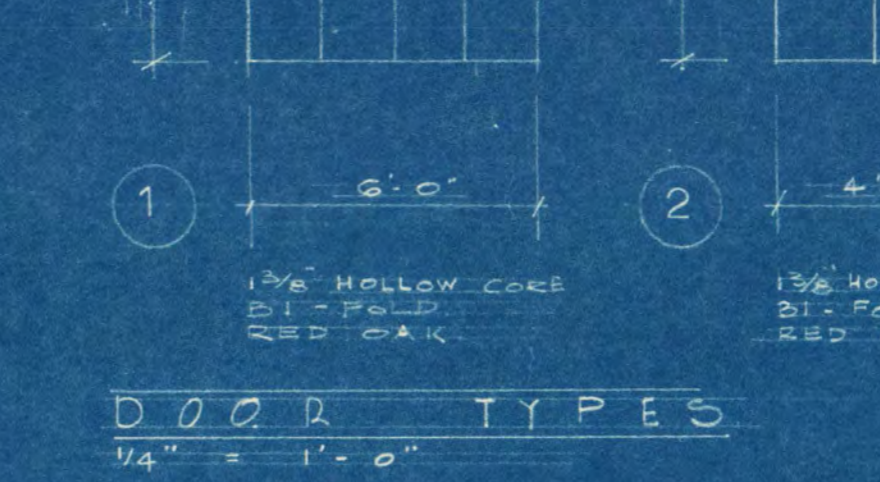
ELEVATION - TYPICAL
LIVING RM. CLOSET
3/8" = 1'-0"



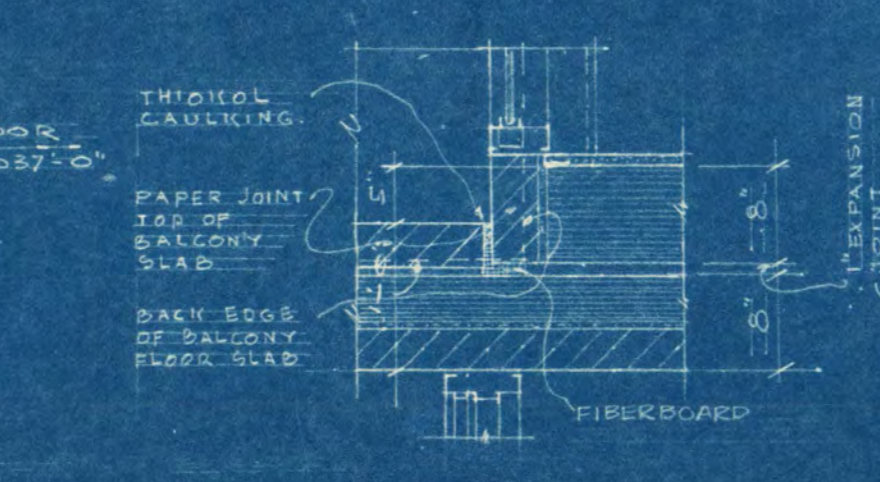
ELEVATION - TYPICAL
UTILITY RM. SHELVING
3/8" = 1'-0"



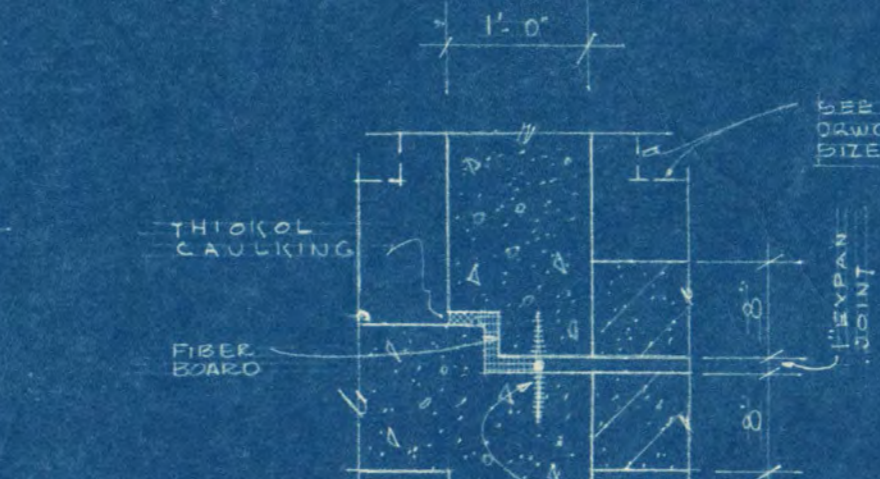
ELEVATION - TYPICAL
UTILITY RM. SHELVING
3/8" = 1'-0"



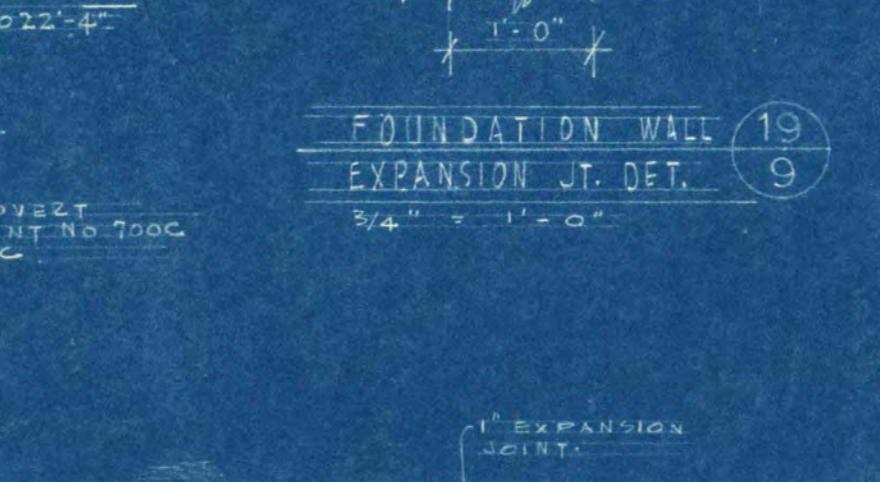
ELEVATION - TYPICAL
UTILITY RM. SHELVING
3/8" = 1'-0"



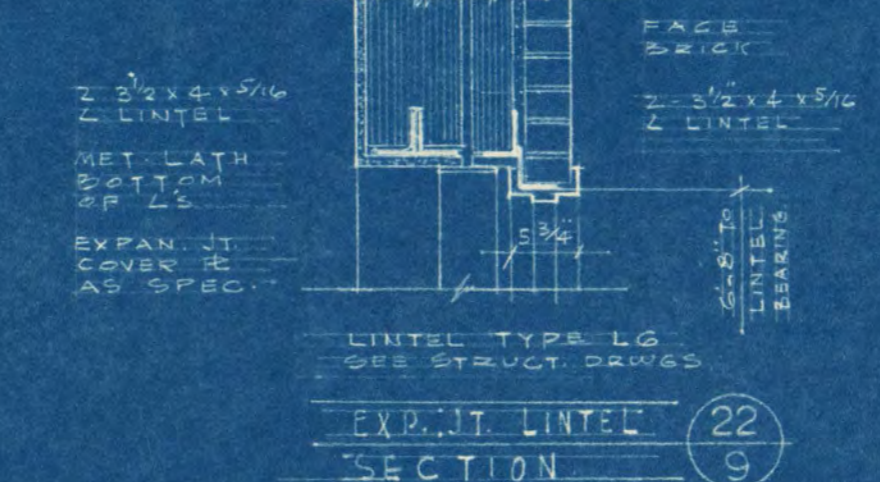
EXPANSION JOINT DET.
3/4" = 1'-0"



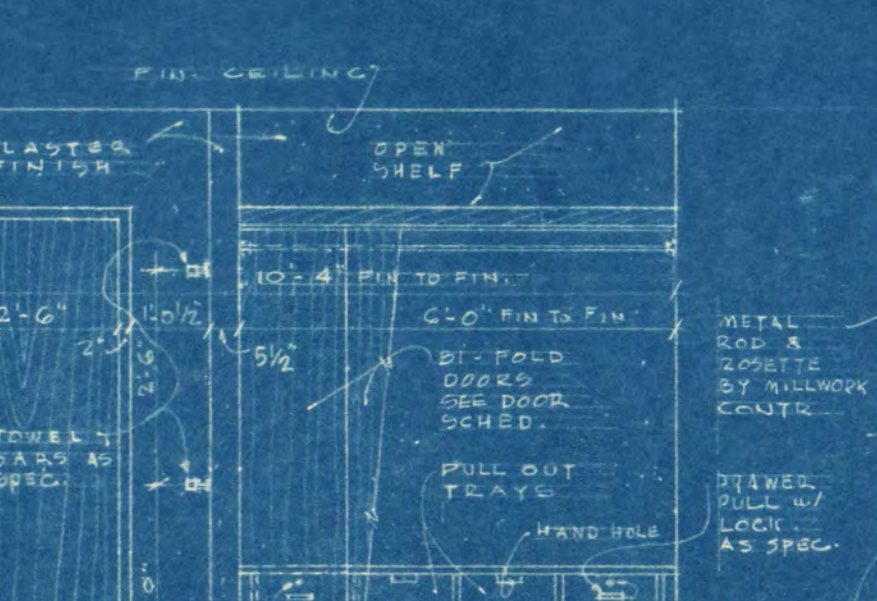
EXPANSION JOINT DET.
3/4" = 1'-0"



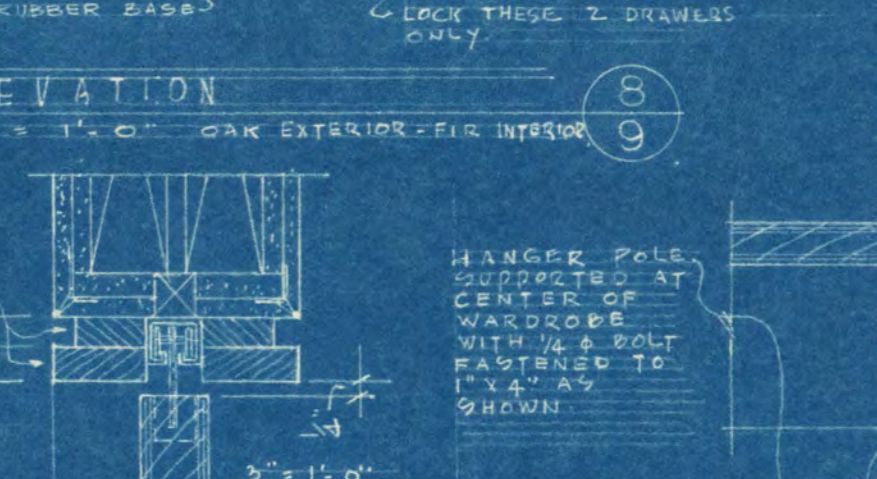
EXPANSION JOINT DET.
3/4" = 1'-0"



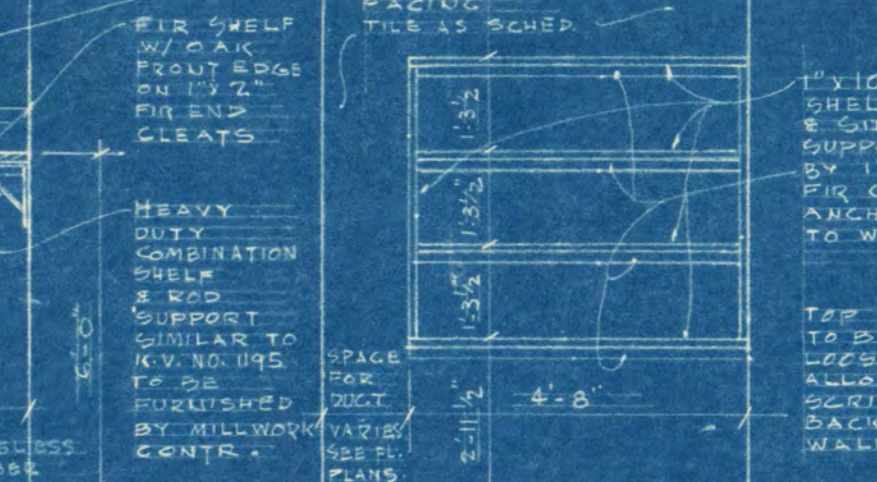
EXPANSION JOINT DET.
3/4" = 1'-0"



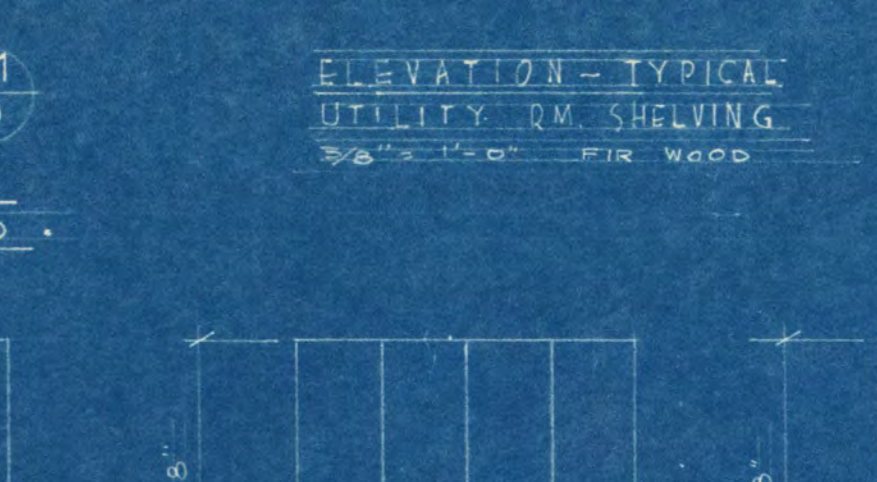
ELEVATION - TYPICAL
UTILITY RM. SHELVING
3/8" = 1'-0"



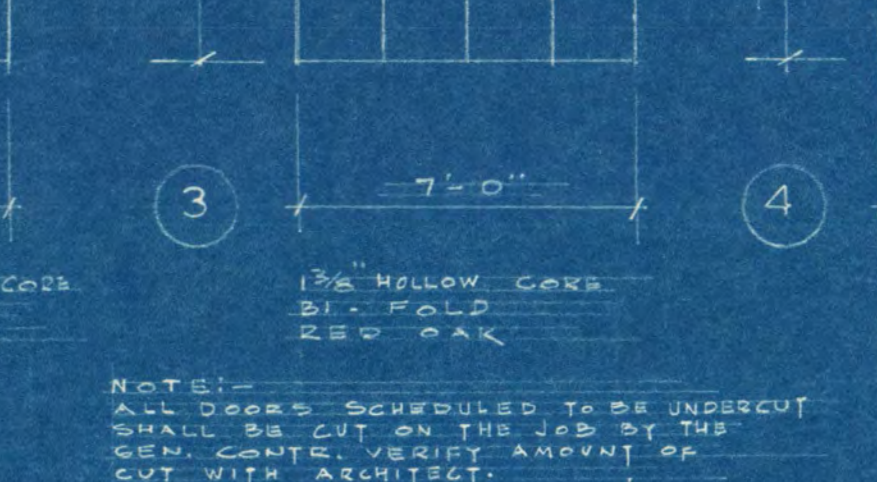
ELEVATION - TYPICAL
UTILITY RM. SHELVING
3/8" = 1'-0"



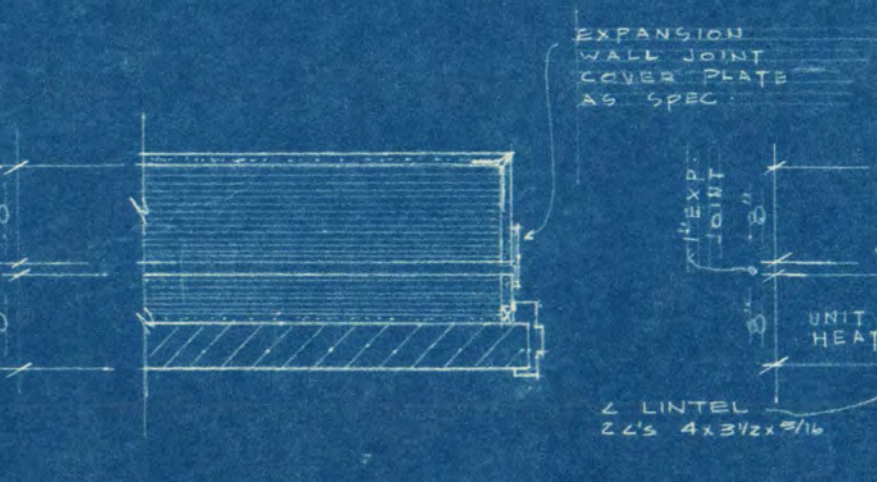
ELEVATION - TYPICAL
UTILITY RM. SHELVING
3/8" = 1'-0"



ELEVATION - TYPICAL
UTILITY RM. SHELVING
3/8" = 1'-0"



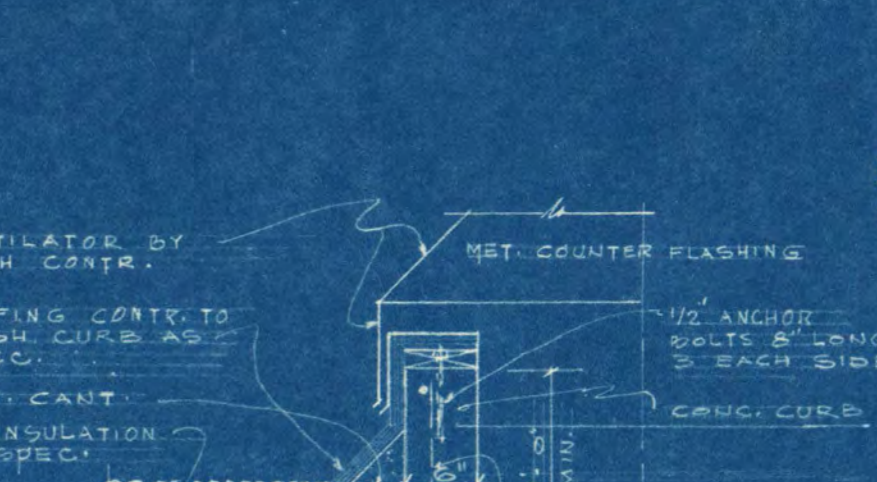
ELEVATION - TYPICAL
UTILITY RM. SHELVING
3/8" = 1'-0"



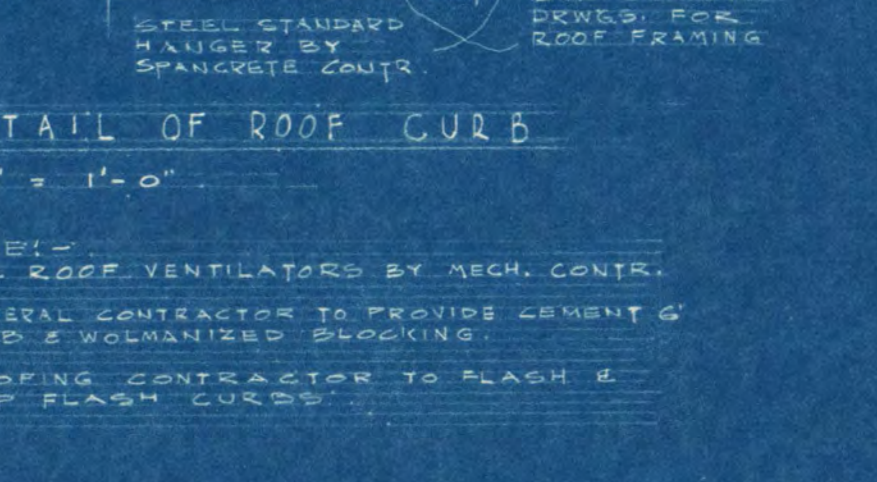
EXPANSION JOINT DET.
3/4" = 1'-0"



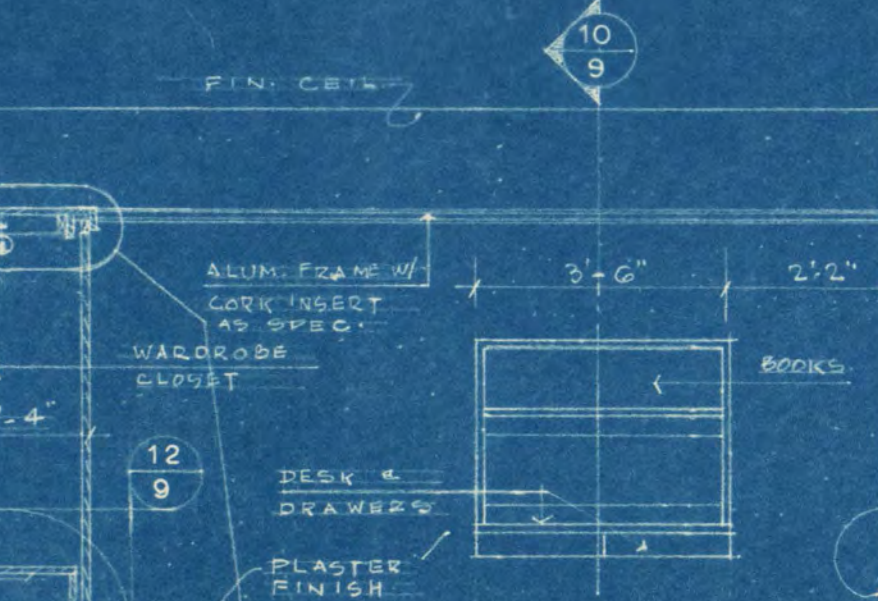
EXPANSION JOINT DET.
3/4" = 1'-0"



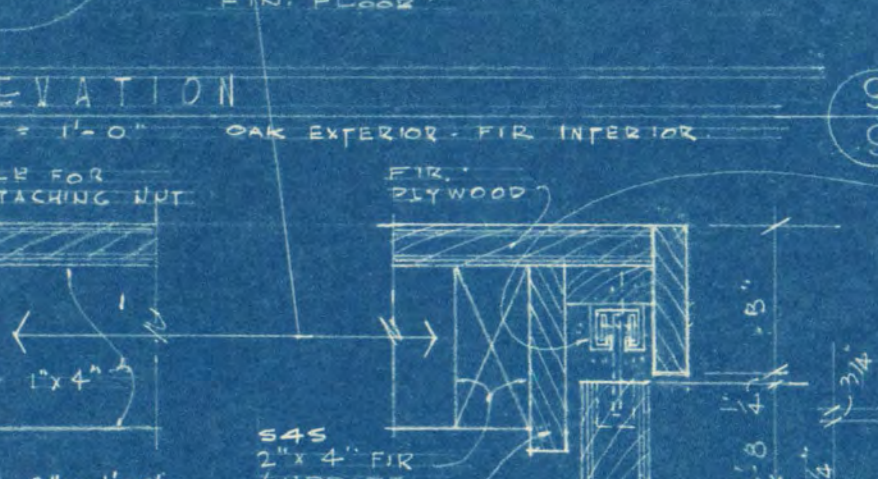
EXPANSION JOINT DET.
3/4" = 1'-0"



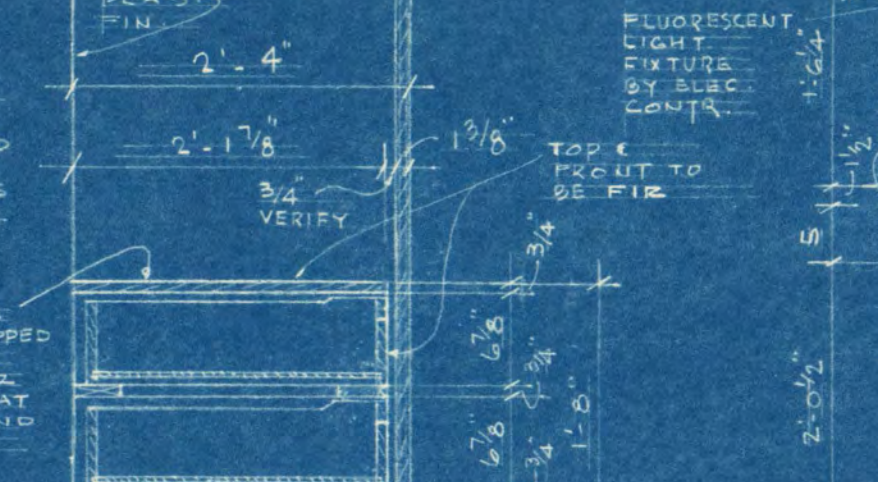
EXPANSION JOINT DET.
3/4" = 1'-0"



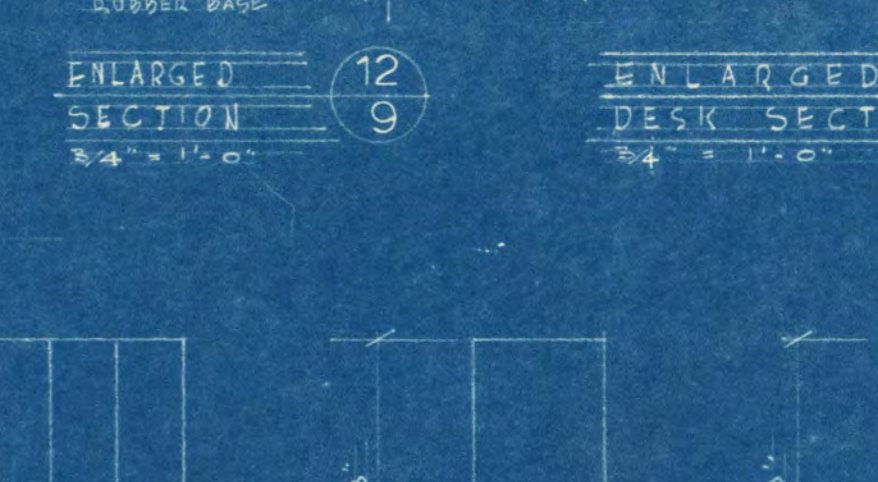
ELEVATION - TYPICAL
UTILITY RM. SHELVING
3/8" = 1'-0"



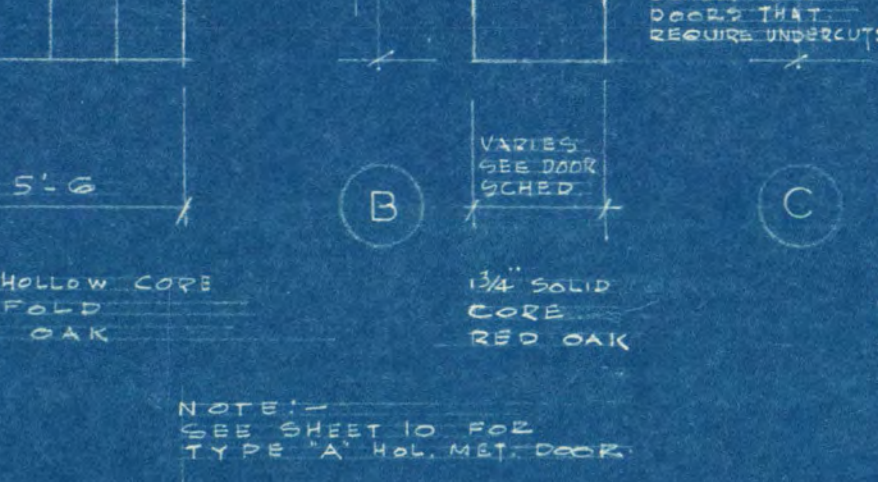
ELEVATION - TYPICAL
UTILITY RM. SHELVING
3/8" = 1'-0"



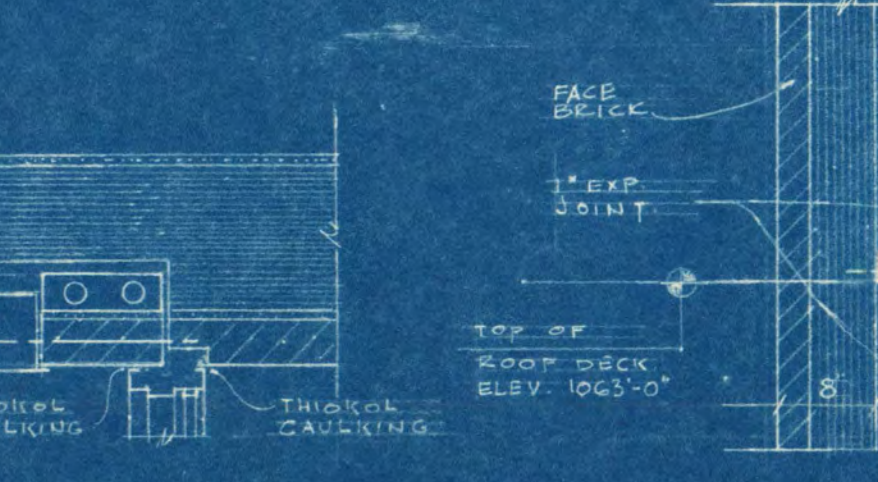
ELEVATION - TYPICAL
UTILITY RM. SHELVING
3/8" = 1'-0"



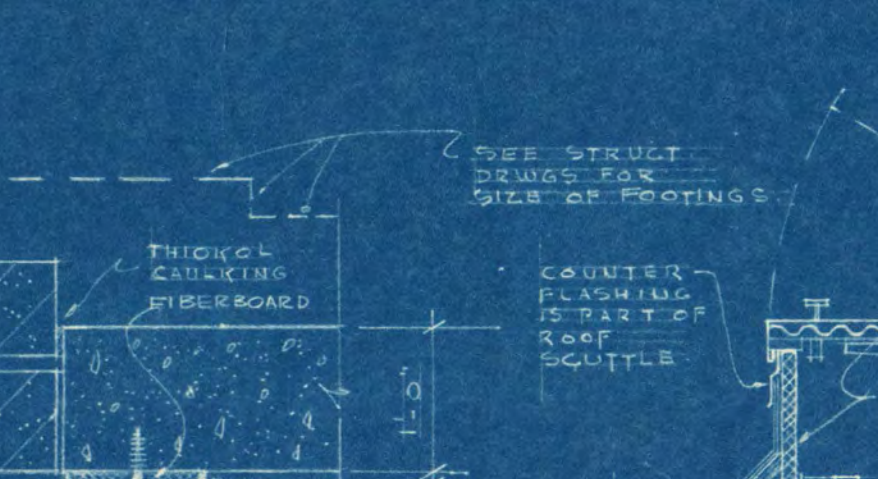
ELEVATION - TYPICAL
UTILITY RM. SHELVING
3/8" = 1'-0"



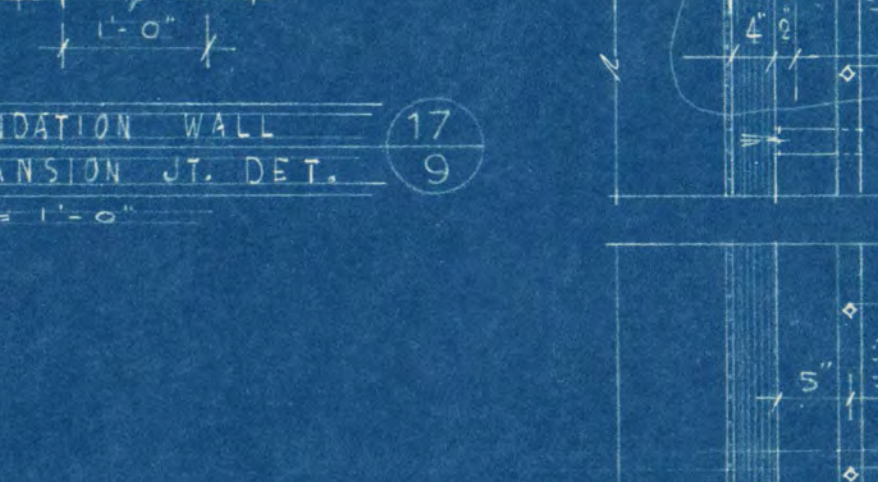
EXPANSION JOINT DET.
3/4" = 1'-0"



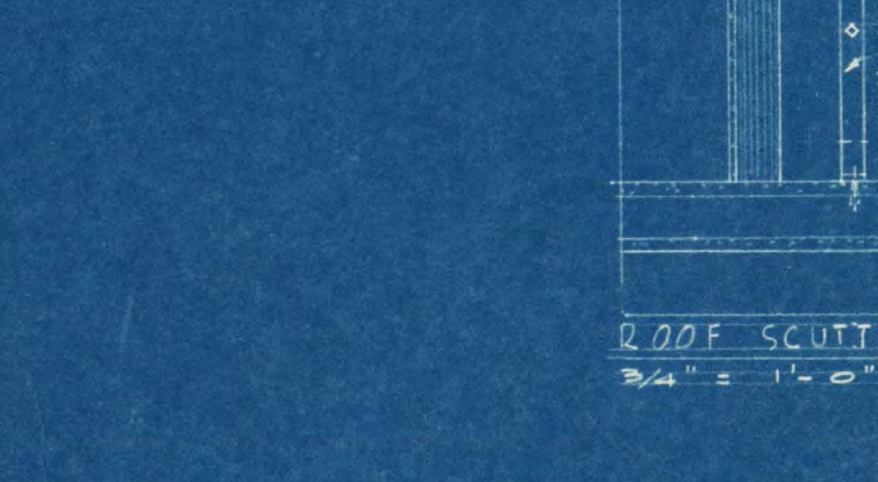
EXPANSION JOINT DET.
3/4" = 1'-0"



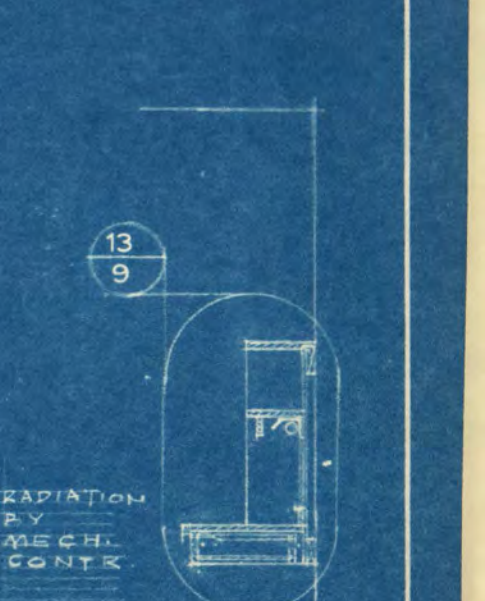
EXPANSION JOINT DET.
3/4" = 1'-0"



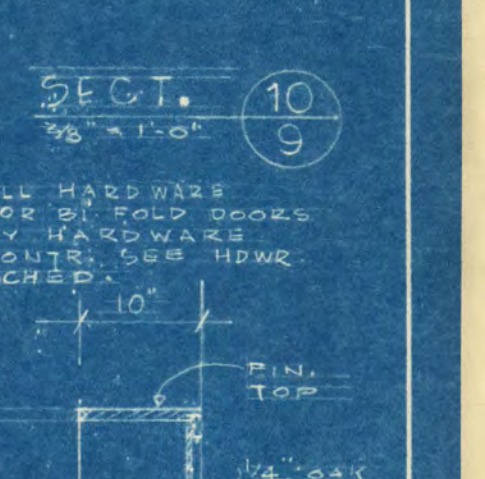
EXPANSION JOINT DET.
3/4" = 1'-0"



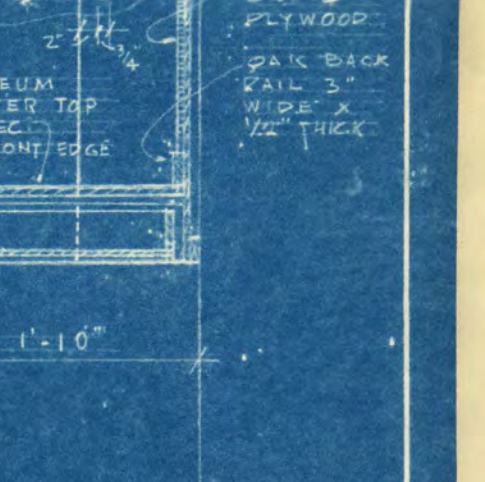
EXPANSION JOINT DET.
3/4" = 1'-0"



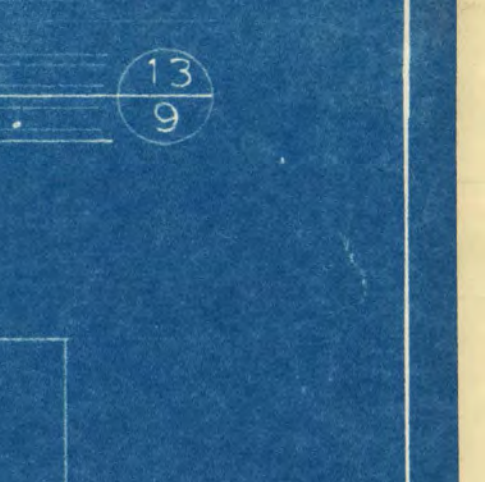
ELEVATION - TYPICAL
UTILITY RM. SHELVING
3/8" = 1'-0"



ELEVATION - TYPICAL
UTILITY RM. SHELVING
3/8" = 1'-0"



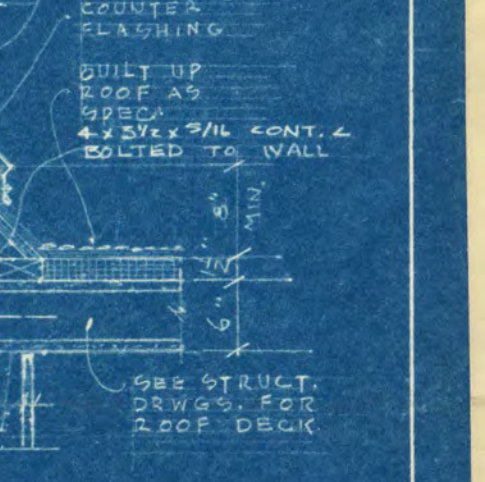
ELEVATION - TYPICAL
UTILITY RM. SHELVING
3/8" = 1'-0"



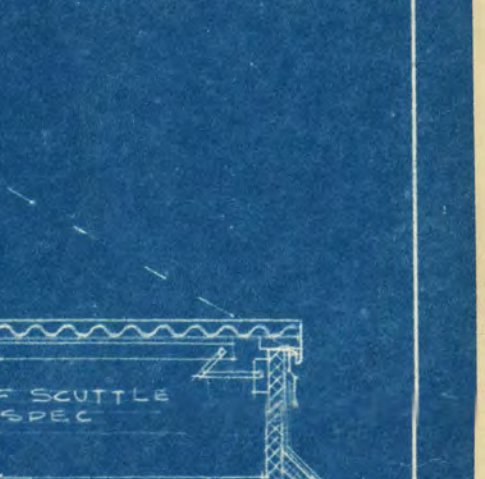
ELEVATION - TYPICAL
UTILITY RM. SHELVING
3/8" = 1'-0"



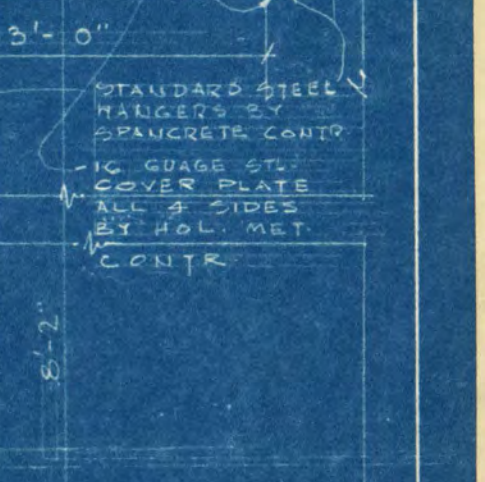
EXPANSION JOINT DET.
3/4" = 1'-0"



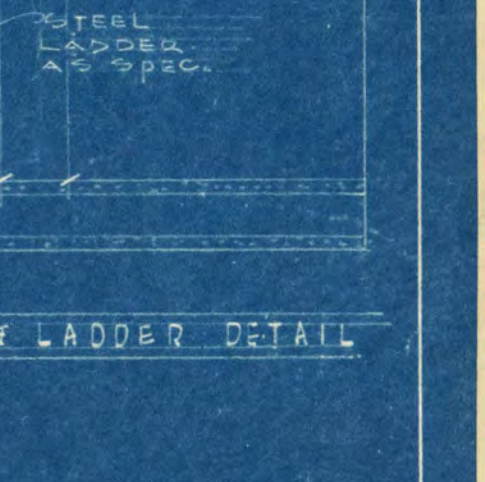
EXPANSION JOINT DET.
3/4" = 1'-0"



EXPANSION JOINT DET.
3/4" = 1'-0"



EXPANSION JOINT DET.
3/4" = 1'-0"



EXPANSION JOINT DET.
3/4" = 1'-0"



STRUCTURAL NOTES

DESIGN DATA:
 1. COMPRESSIVE CONCRETE STRESS IN 28 DAYS.
 2. 3,000 PSI STRUCTURAL FOOTINGS, WALLS, SLABS AND BEAMS.
 3. MINIMUM YIELD STRESS, REINFORCING = 40,000 PSI.
 4. MINIMUM YIELD STRESS, REINFORCING BARS (A.15) = 33,000 PSI.
 5. MINIMUM YIELD STRESS, STRUCTURAL STEEL = 36,000 PSI.
 6. MINIMUM YIELD STRESS, MSA ANCHORS AND PLATES (A.19) = 36,000 PSI.
 7. OTHER STRUCTURAL STEEL (A.30) = 36,000 PSI.

LIVE LOADS:
 ROOMS: 40 PSF; STAIRS: 100 PSF; ROOF: 20 PSF

SOIL BEARING DESIGN VALUE:
 FOOTINGS SHALL BEAR ON UNDISTURBED VIRGIN SOIL EXCEPT ON COMPACTED SOIL CAPABLE OF SUPPORTING THE LOADS WITHOUT DETRIMENTAL SETTLEMENT SOIL BEARING DESIGN VALUE = 4000 PSF

DESIGN CODES:
 STRUCTURAL STEEL - A. I. S. C. 5 SPEC.
 CONCRETE - A. C. I. BUILDING CODE
 UNIFORM BUILDING CODE
 ALL CODES - LATEST EDITIONS.

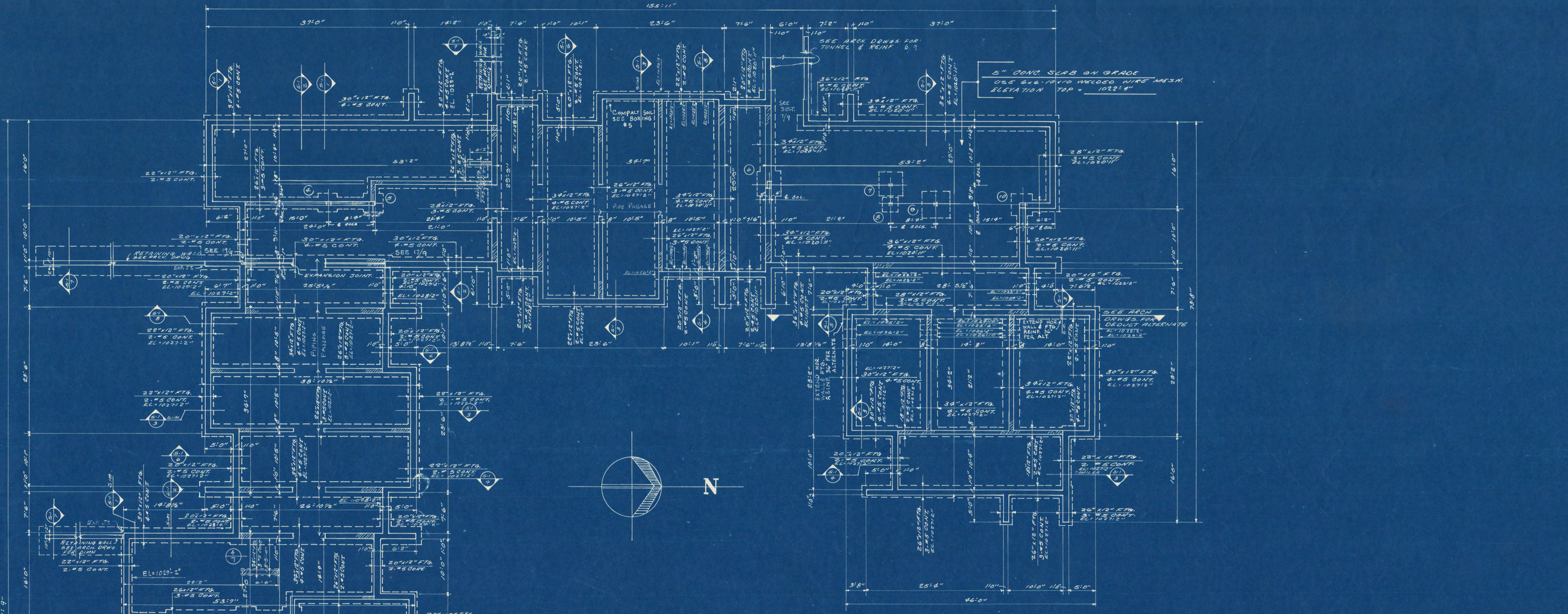
FOOTINGS:
 FOOTINGS ARE CONT. POURED CONCRETE. PLACE CONT. BARS 3" CLEAR BOTTOM AND SIDES. LAPPING 18" AT SPICES & FULL CROSSING LAP AT CORNERS & INTERSECTIONS. UNLESS OTHERWISE NOTED, WALL FOOTINGS ARE CENTERED ON WALLS & COLUMN FOOTINGS ARE CENTERED ON COLUMNS

POURED CONCRETE WALLS:
 USE 2" TOP & BOT. CONT. LAPPING 2'-0" @ SPICES FOR 12" RC & 8" RC WALLS. USE 4'-0" CORNER BARS, TWO FT. E.W., TO MATCH SIZE & SPACING AS HORIZONTAL REIN.

MECHANICAL OPENINGS:
 VERIFY SIZE & LOCATION OF OPENINGS AS SHOWN ON ARCH. & MECH. DRAWINGS.

LINTELS:
 SEE SCHEDULE AND PLANS FOR LINTELS.

PRECAST CONCRETE SLABS:
 6" PRECAST CONCRETE ROOF AND FLOOR SLABS CAPABLE OF CARRYING LIVE LOADS NOTED & FACTOR PARTITION LOAD WITH ACCEPTABLE SAFETY FACTOR & DEFLECTION. ALLOWABLE DEFLECTION = $L/360$. 3/4" x 1/4" MASONITE SHALL BE USED FOR BEARING PADS.
 VERIFY DIMENSIONS, ELEVATIONS & DETAILS WITH ARCH. DRNGS



FOOTING AND FOUNDATION PLAN

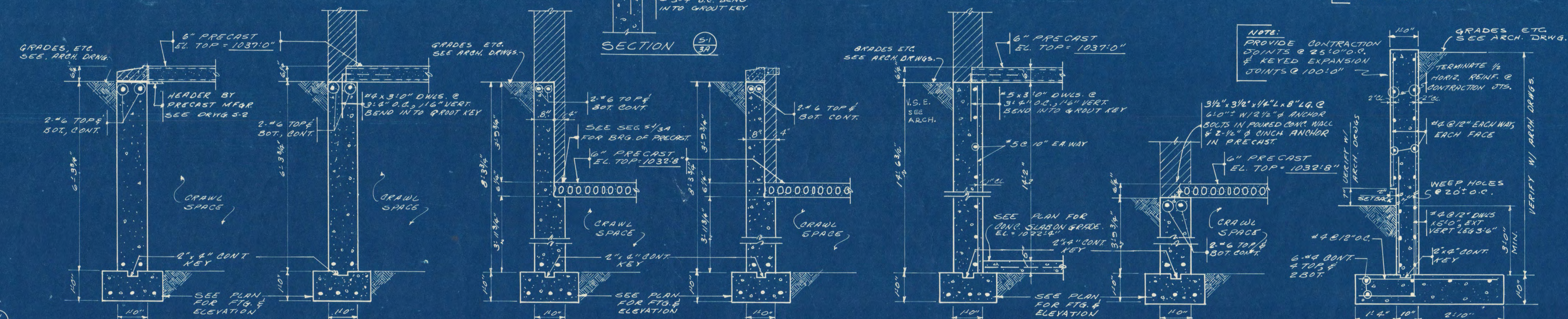
SEE PLAN FOR CONG. SLABS ON GRADE. ELEVATION BOTTOM OF FOOTING RE = 1032'-2". UNLESS NOTED, SEE PLAN FOR OTHERS. SEE SHEET 3-4 FOR COLUMN & FOOTING SCHEDULES

NOTE:
 1. ALL WALLS & 2. ADD TOP REINFORCING 1-0" DIA. STEEL OVER OPENINGS IN FTG. USE SAME SIZE & QUANTITY AS BOTTOM REINFORCING. SUPPORT TOP REIN. AS REQUIRED

SECTION (S1)



NOTE: PROVIDE 1" EXPANSION JOINT IN WALL AT BUILDING LINE



SECTION (S1)
SECTION TYPICAL @ EXTERIOR WALLS

SECTION (S2)
SECTION TYPICAL @ EXTERIOR WALLS

SECTION (S3)
SECTION TYPICAL @ EXTERIOR WALLS

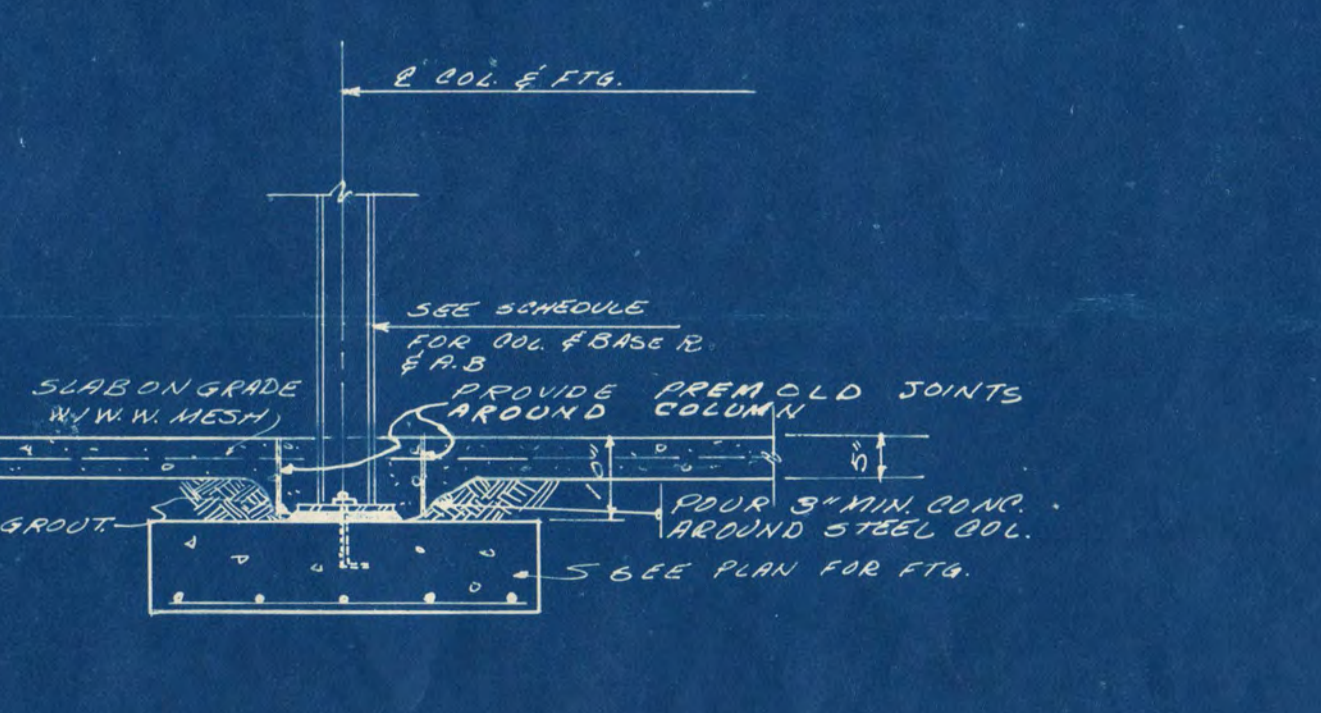
SECTION (S4)
SECTION TYPICAL @ EXTERIOR WALLS

SECTION (S5)
SECTION @ EXTERIOR WALLS & BASEMENT

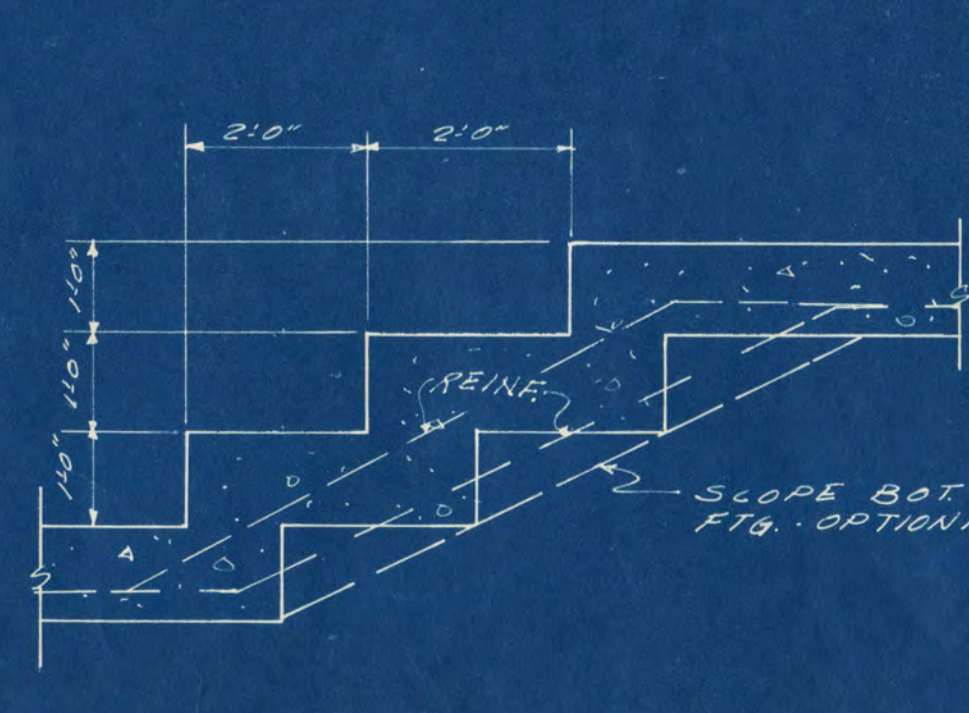
SECTION (S6)
SECTION EXTERIOR SOUTH WALL

SECTION (S7)
TYPICAL RETAINING WALL SECTION

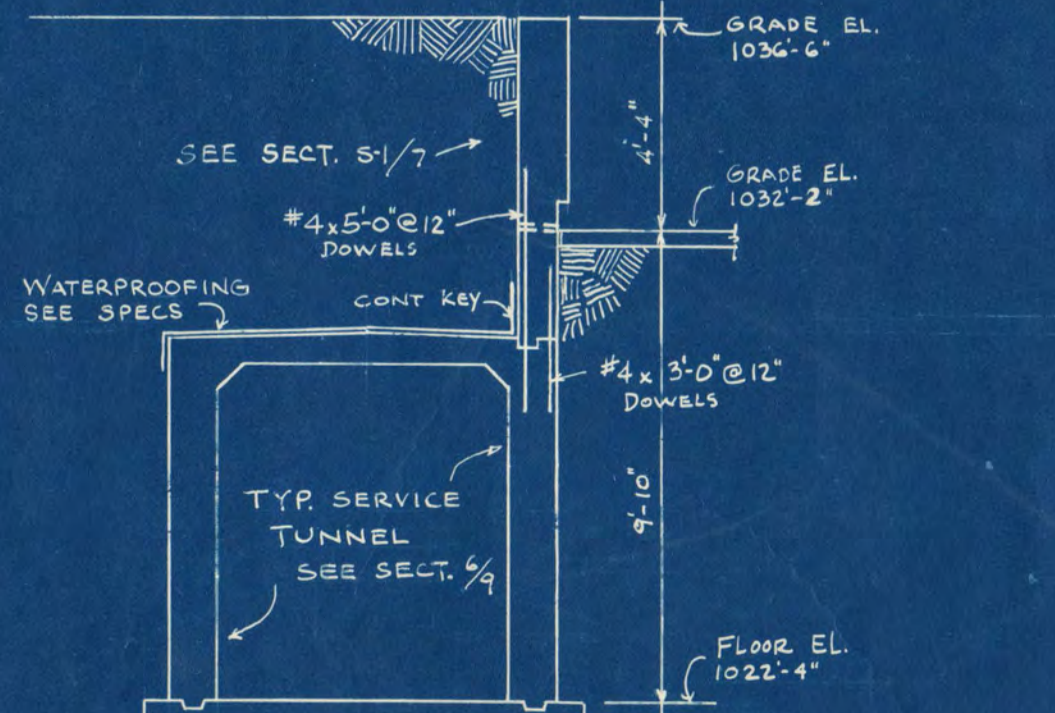
TYPICAL BLOCK TO CONCRETE WALL CONNECTION DETAIL



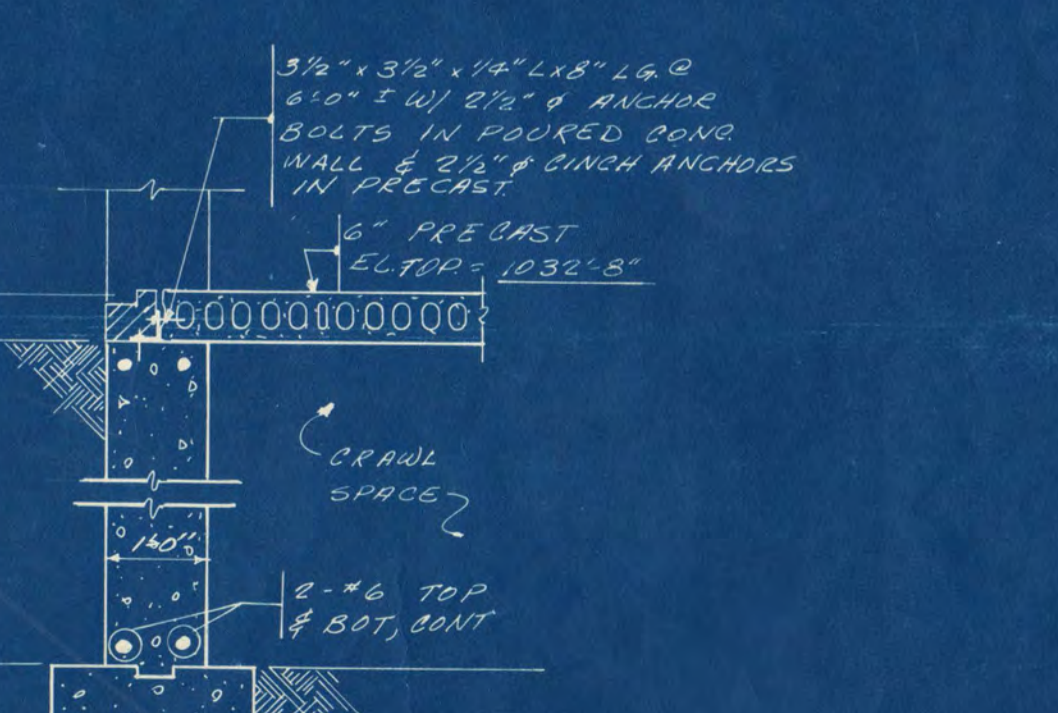
TYPICAL COLUMN FTG. DETAIL



TYPICAL STEP FOOTING

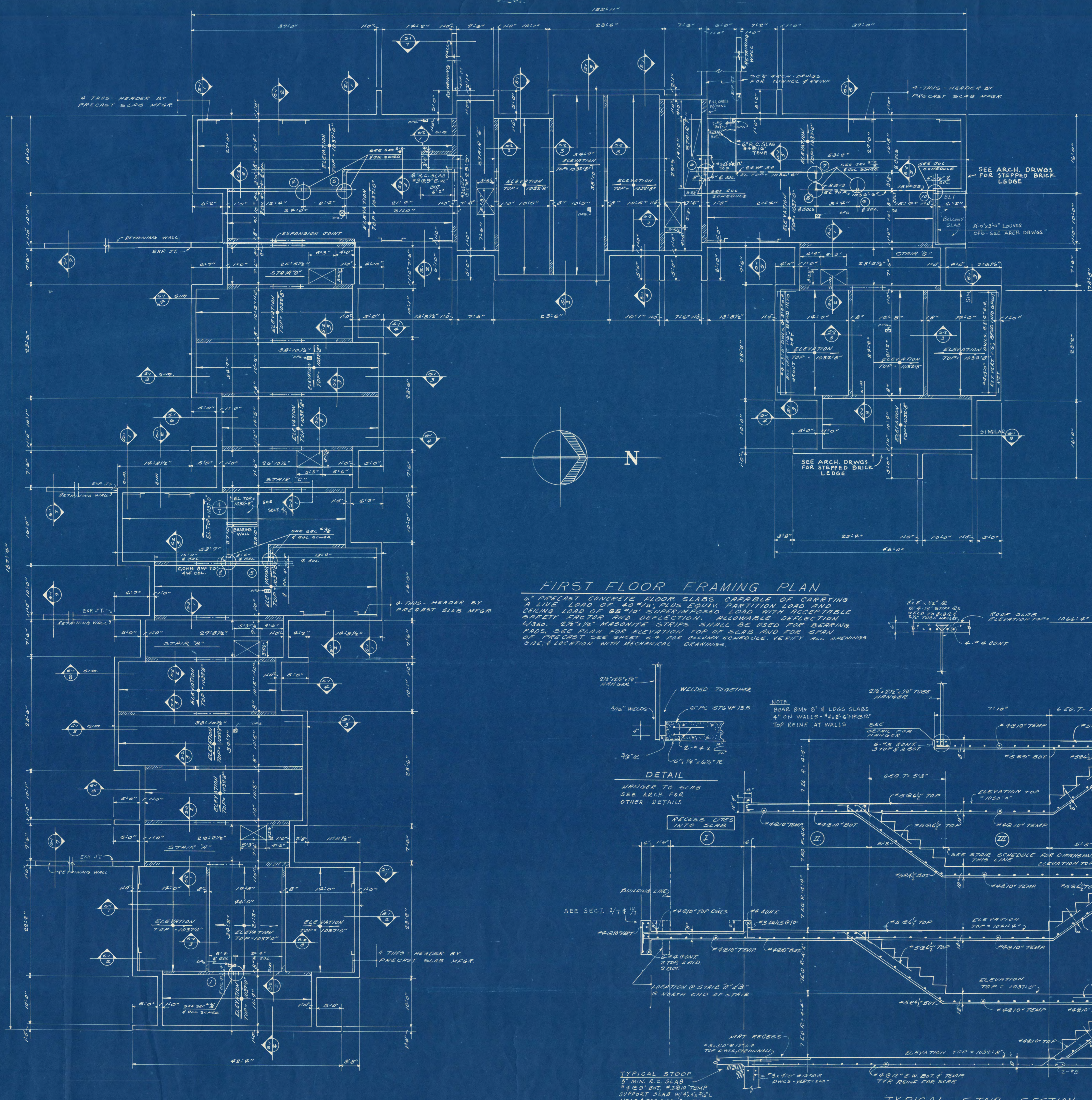


TUNNEL SECT. AT RET. WALL



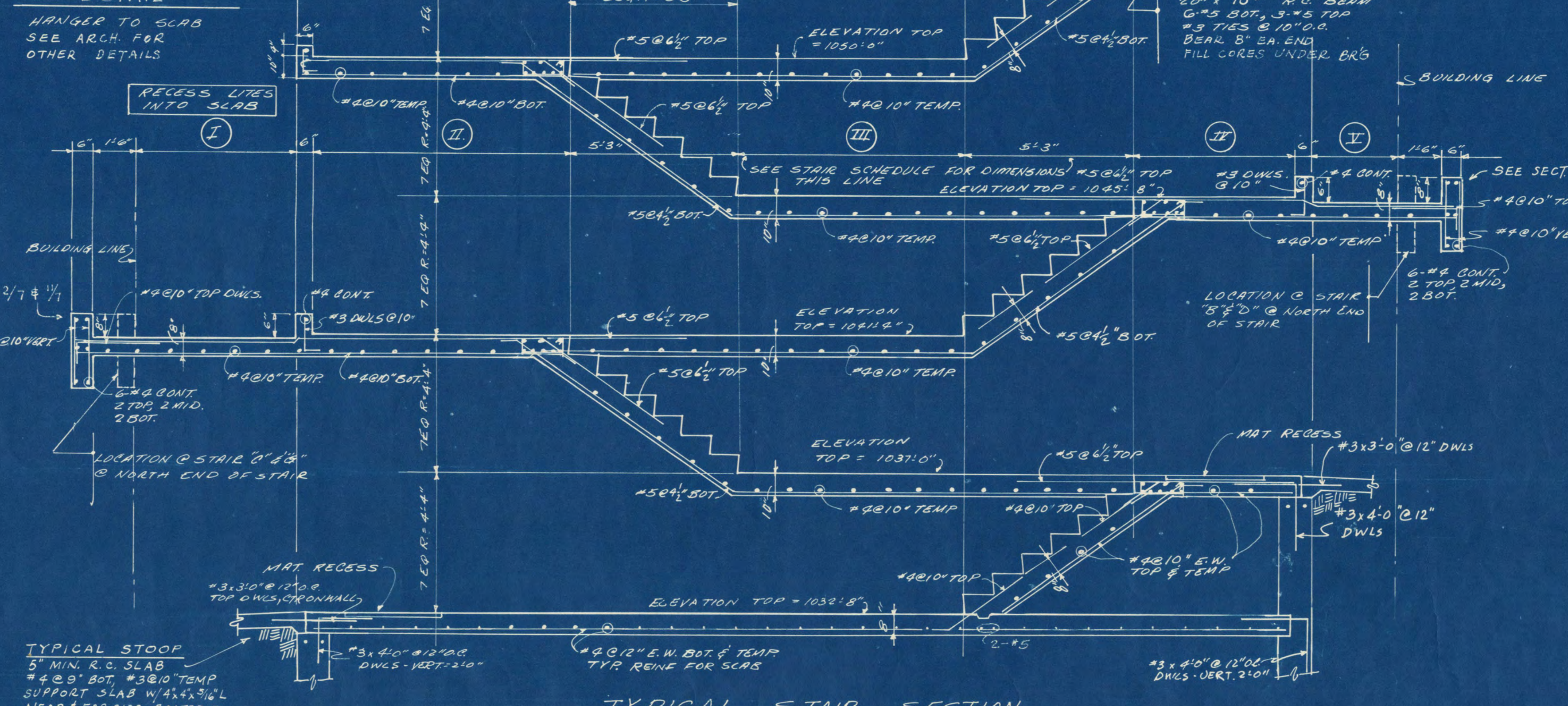
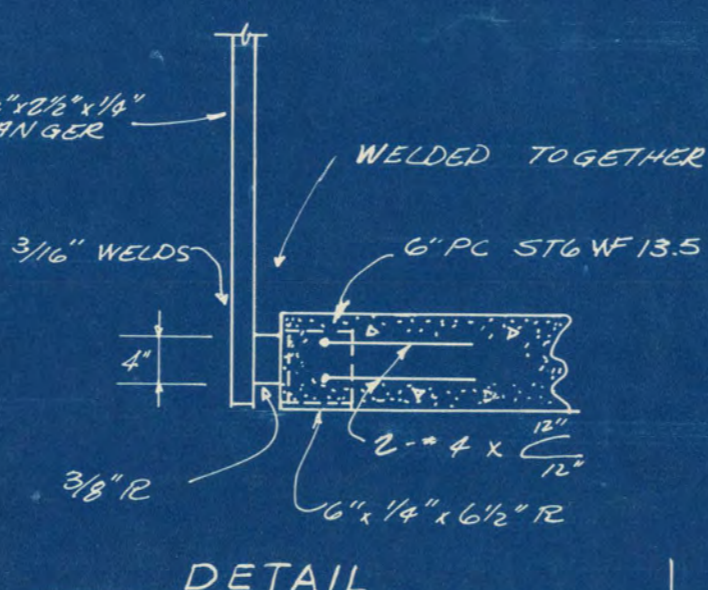
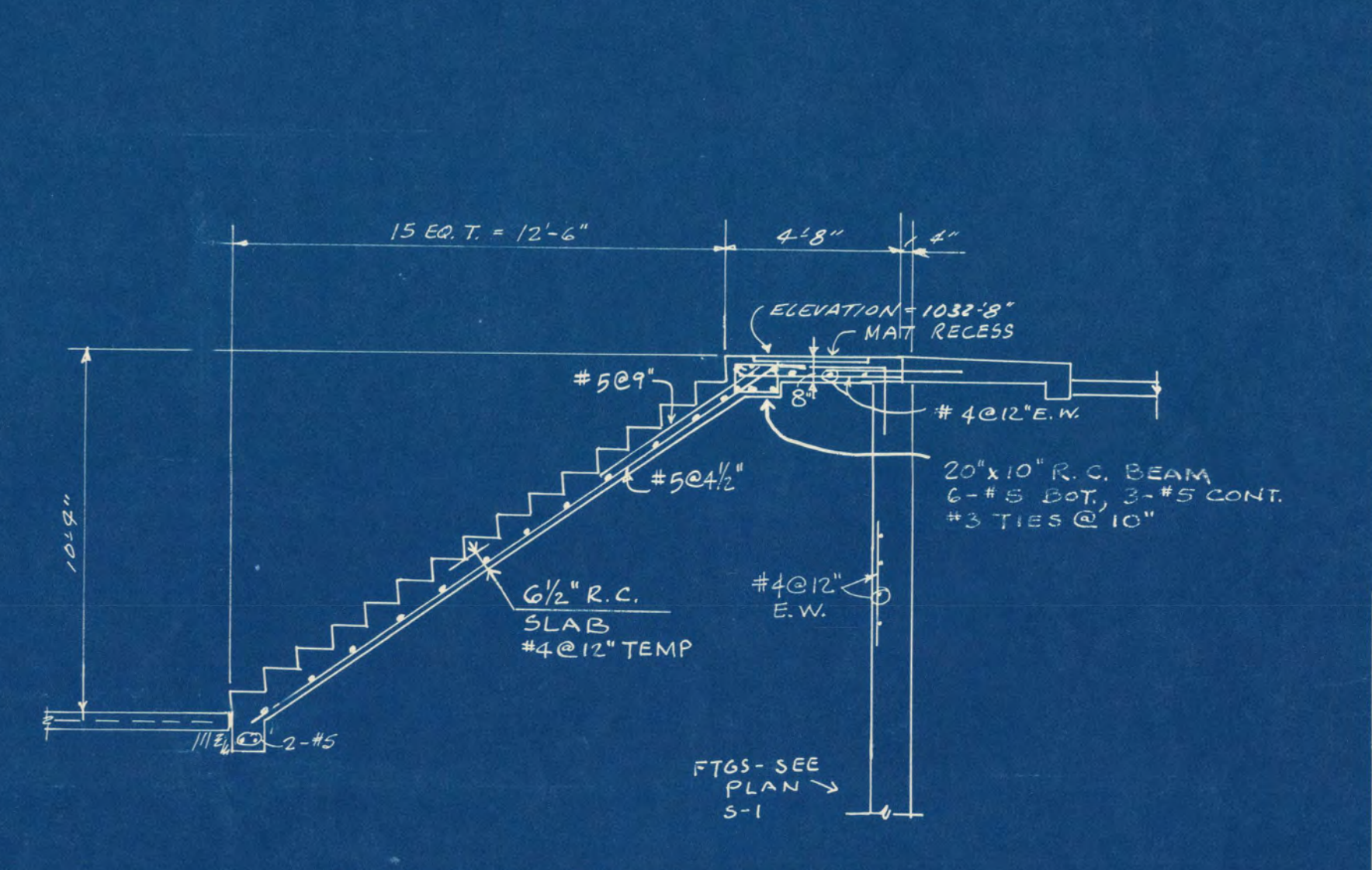
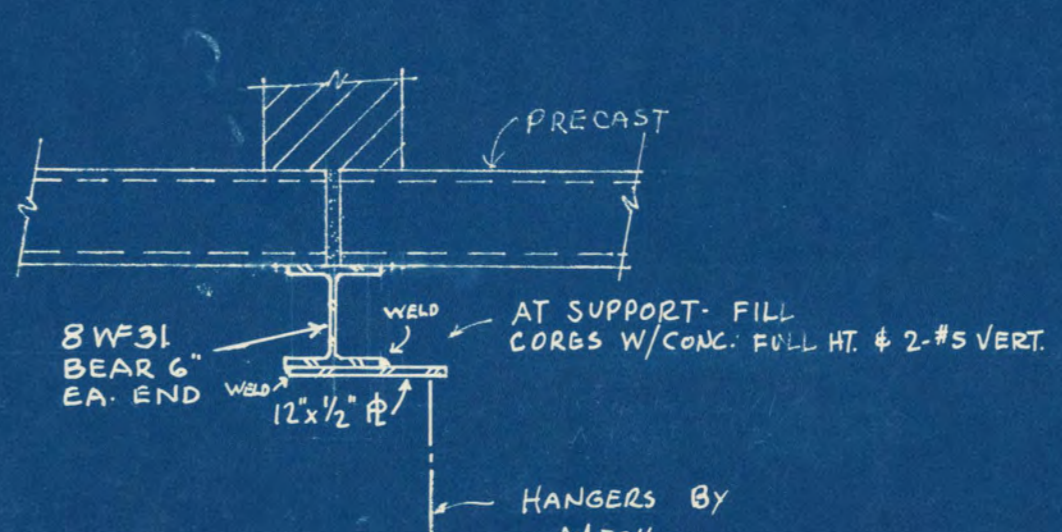
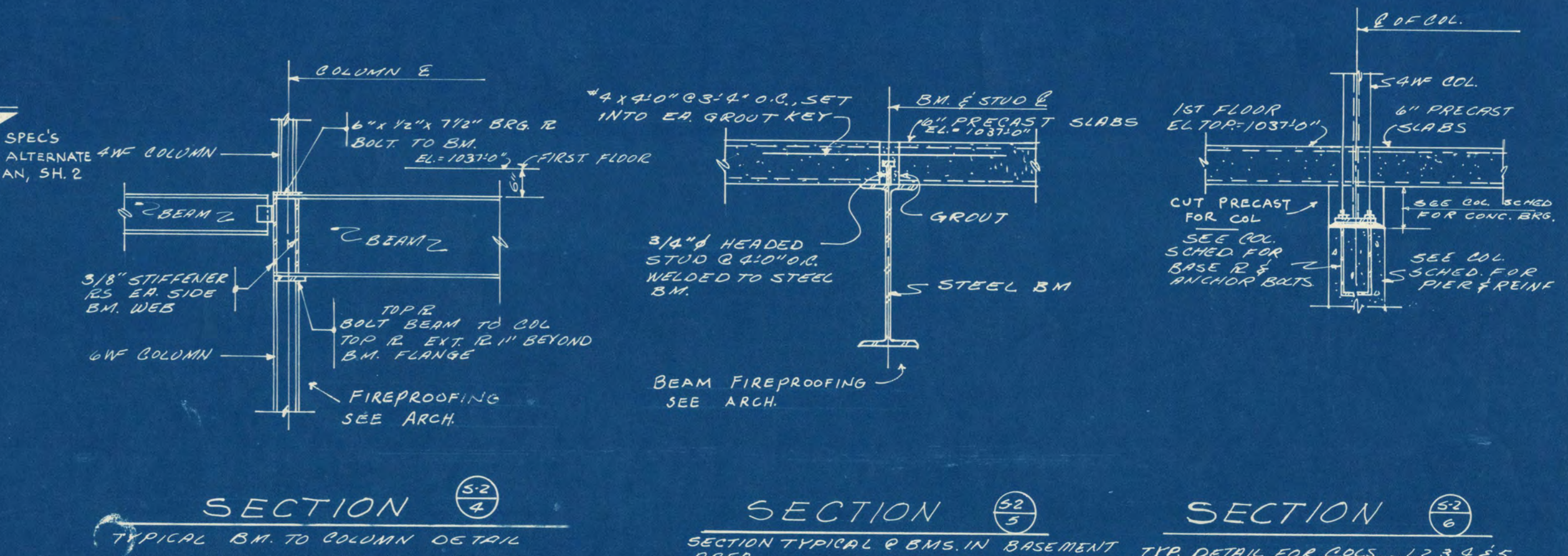
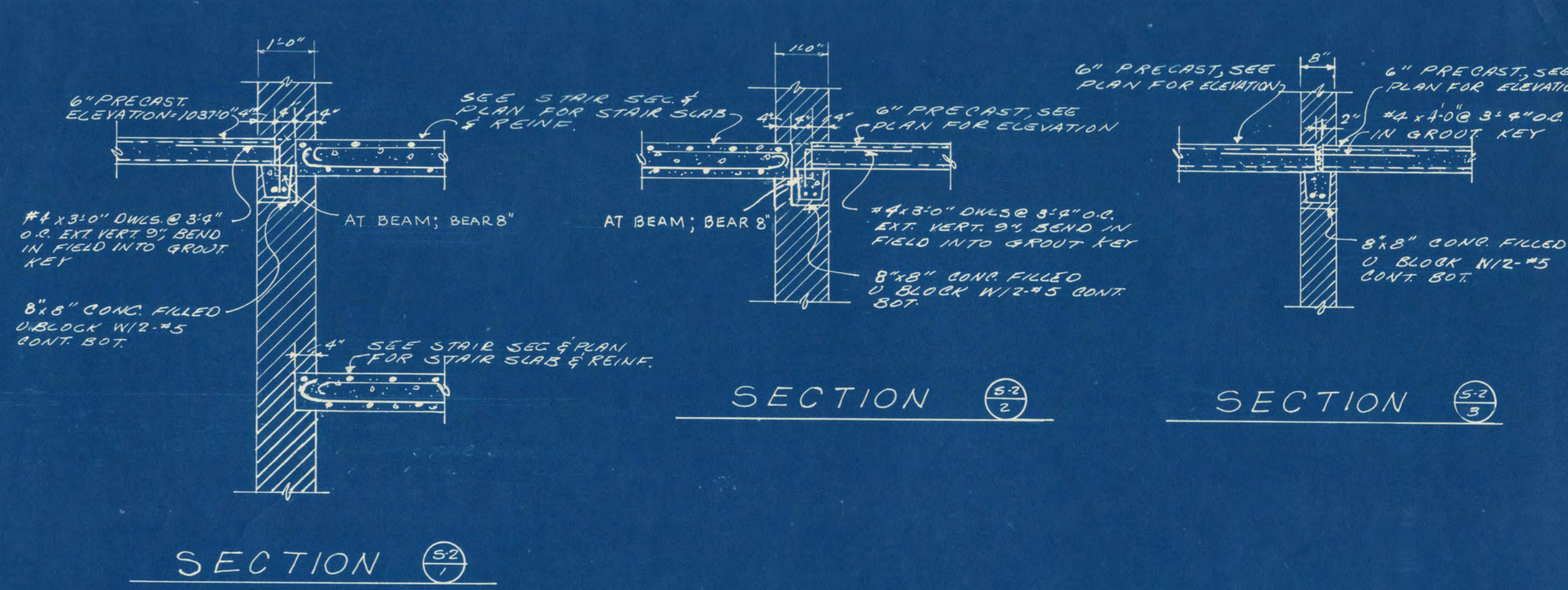
SECTION (S8) TYPICAL @ EXTERIOR WINDOWS





FIRST FLOOR FRAMING PLAN

6" PRECAST CONCRETE FLOOR SLABS CAPABLE OF CARRYING A LIVE LOAD OF 40 P.S.F. PLUS EQUIV. PARTITION LOAD AND DEAD LOAD OF 65 P.S.F. SUPERIMPOSED LOAD WITH ACCEPTABLE SAFETY FACTOR AND DEFLECTION. ALLOWABLE DEFLECTION 1/360. 6" x 12" MASONITE STRIPS SHALL BE USED FOR BEARING FLOOR. SEE PLAN FOR ELEVATION TOP OF SLAB AND FOR SPAN OF PRECAST. SEE SHEET S-4 FOR COLUMN SCHEDULE. VERIFY ALL DRAWINGS SIZE & LOCATION WITH MECHANICAL DRAWINGS.



STAIR DIMENSION SCHEDULE					
STAIR NO.	I	II	III	IV	V
STAIR "A"	5'0"	7'0"	6'10 1/2"	5'0"	2'8"
STAIR "B"	5'0"	6'9"	6'10 1/2"	5'0"	4'8"
STAIR "C"	5'0"	6'0"	5'10 1/2"	6'0"	5'0"
STAIR "D"	6'0"	5'3"	6'10 1/2"	4'8"	6'10"
STAIR "E"	5'0"	8'0"	7'0"	4'8"	2'11"
STAIR "F"	5'0"	5'9"	10'9"	4'8"	2'11"
STAIR "G"	4'0"	4'10"	6'1 1/2"	5'0"	4'0"