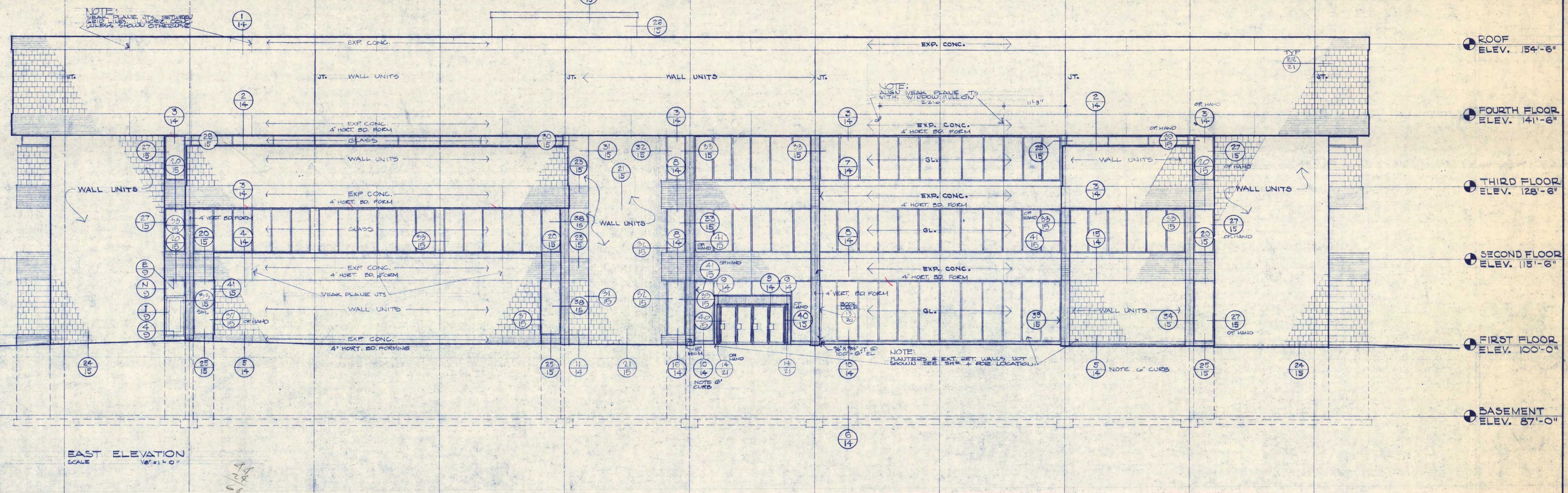
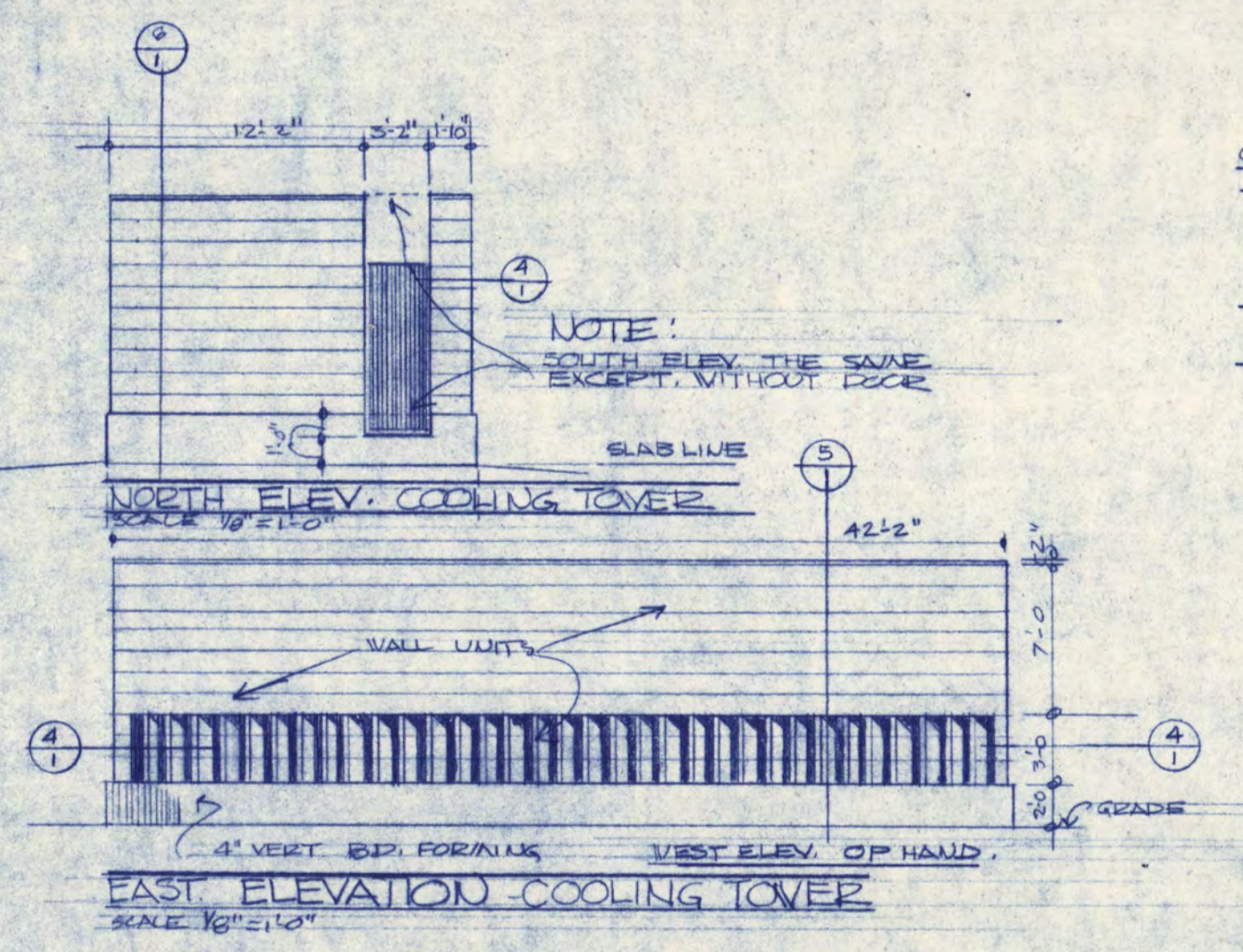
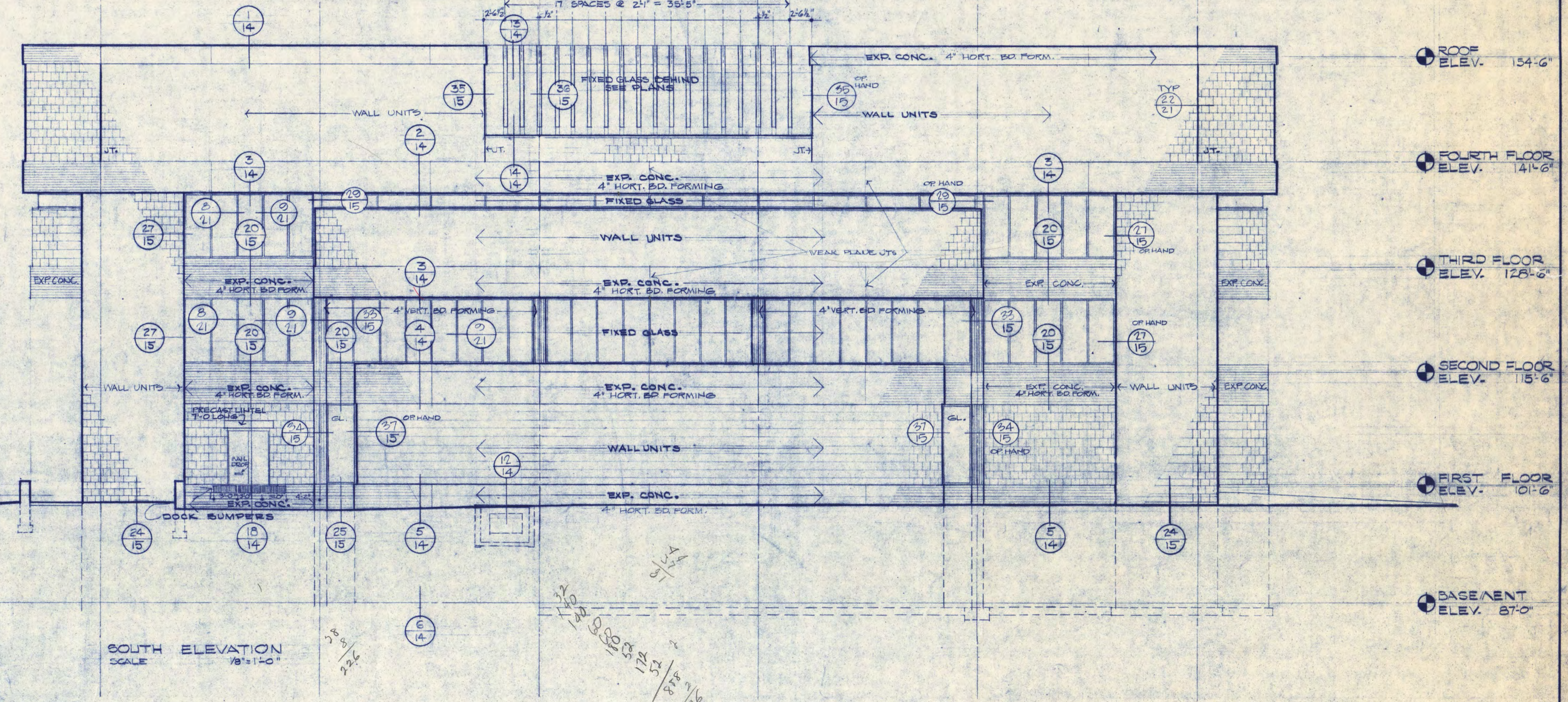


1 2 3 4 5 6 7 8 9 10 11

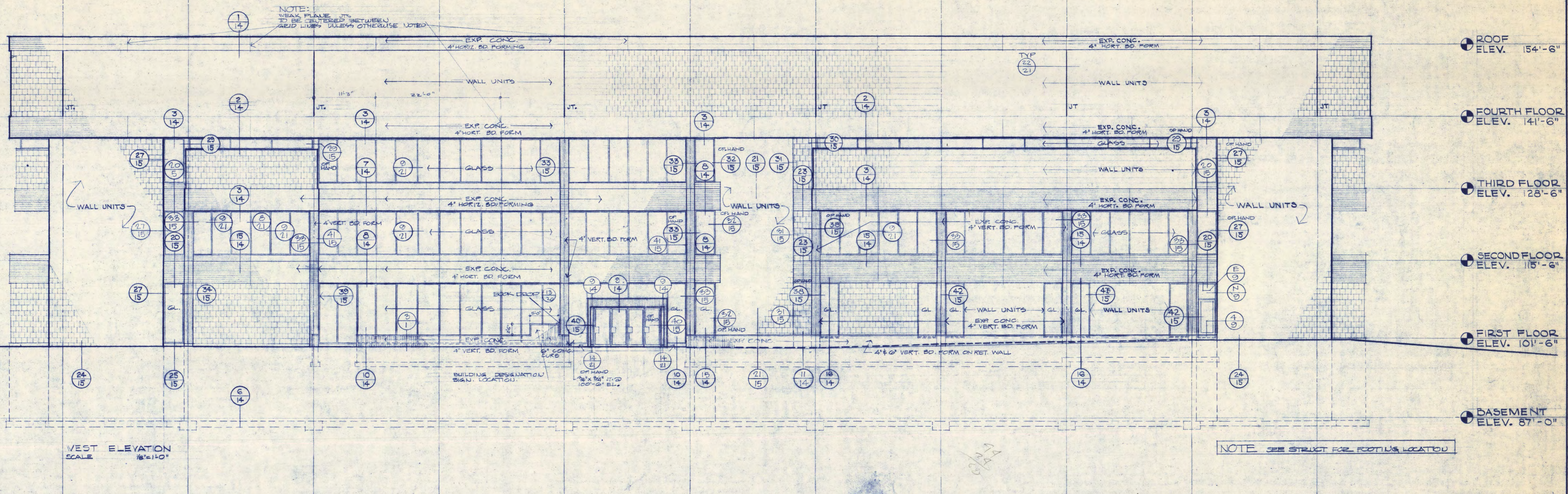


A B C D E F



GENERAL NOTE
 - BEAMS HAVE 4" HORIZONTAL BOARD FORMS, COLUMNS HAVE 4" VERTICAL BOARD FORMS - WHERE BEAMS & COLUMNS MEET THE 4" HORIZONTAL BOARD FORMING IS CONTINUED ACROSS THE COLUMN - COLUMNS TO 4" ARE FREE STANDING FROM SECOND TO THIRD FLOOR AND HAVE VERTICAL BOARD FORMING TO THIRD FLOOR SUPPORT WITH 1/2" JOINTS AS SHOWN ON ELEVATIONS. CONTINUE 1/2" JOINTS ACROSS COLUMNS TO FLOOR LINES & CEILING LINES EXCEPT SECOND FLOOR FROM GRID 5 THRU 11 WHERE 3/4" JOINTS ARE USED TO ALIGN WITH TOP OF GL CURS. ON INTERIOR COLUMNS 4" VERTICAL BOARD FORMING IS NOT REQUIRED ABOVE CEILING.
 - SEE STRUCT. FOR FOOTING LOCATION

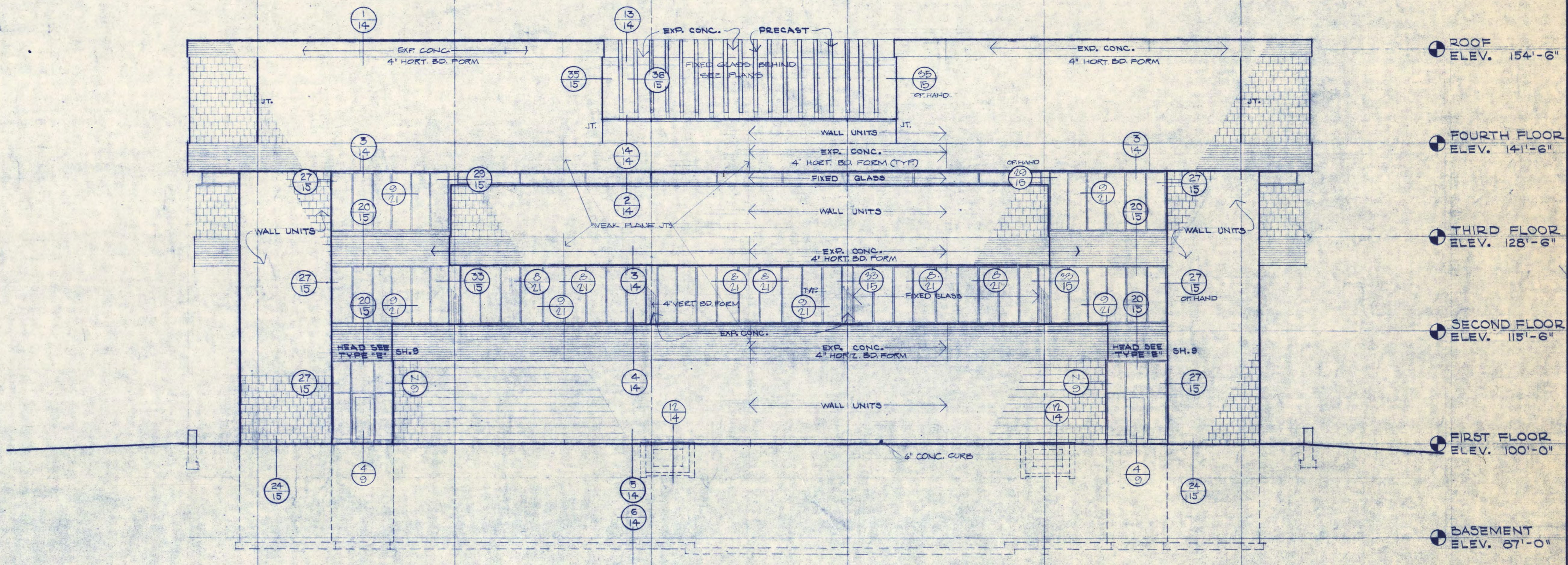
11 10 9 8 7 6 5 4 3 2 1



WEST ELEVATION
SCALE 1/8" = 1'-0"

NOTE: SEE STRUCT. FOR FOOTING LOCATION

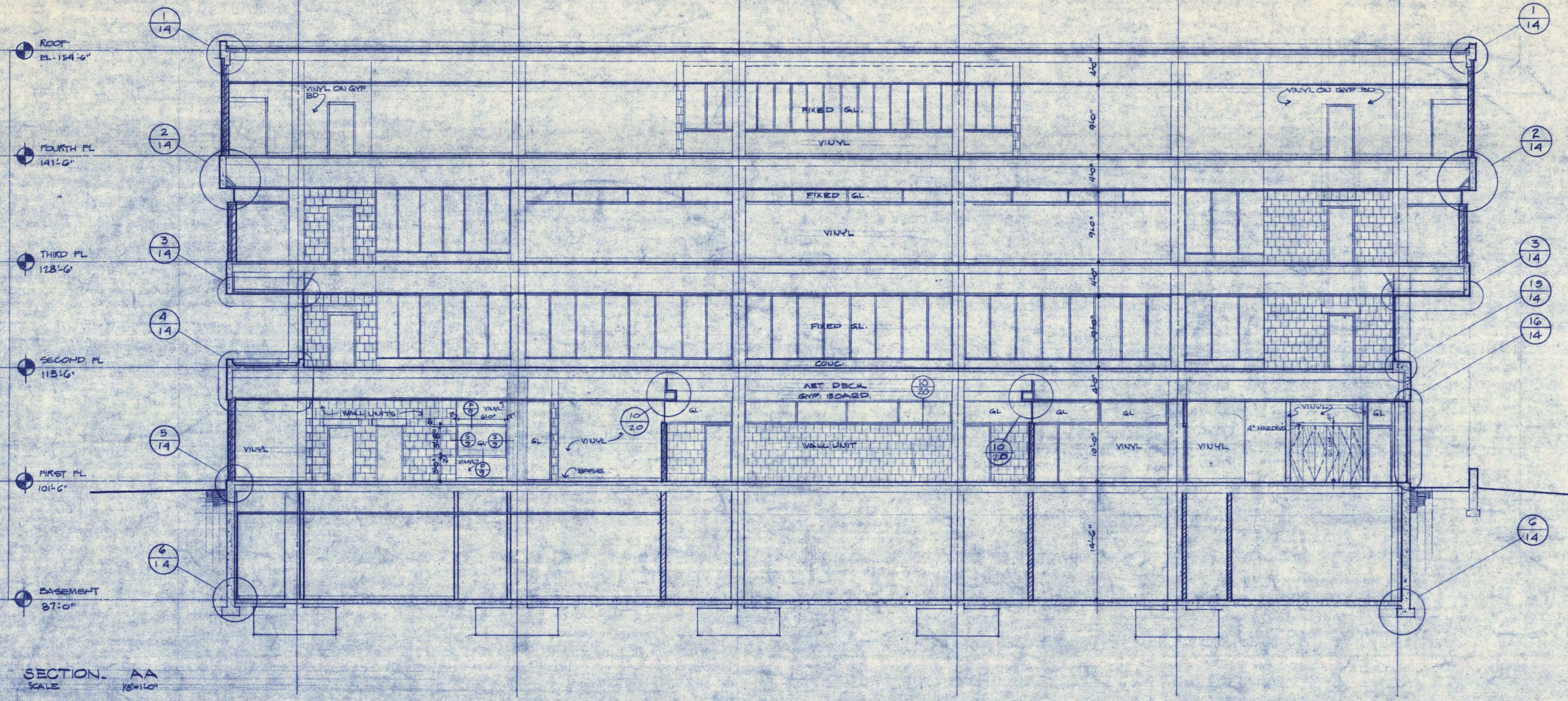
F E D C B A



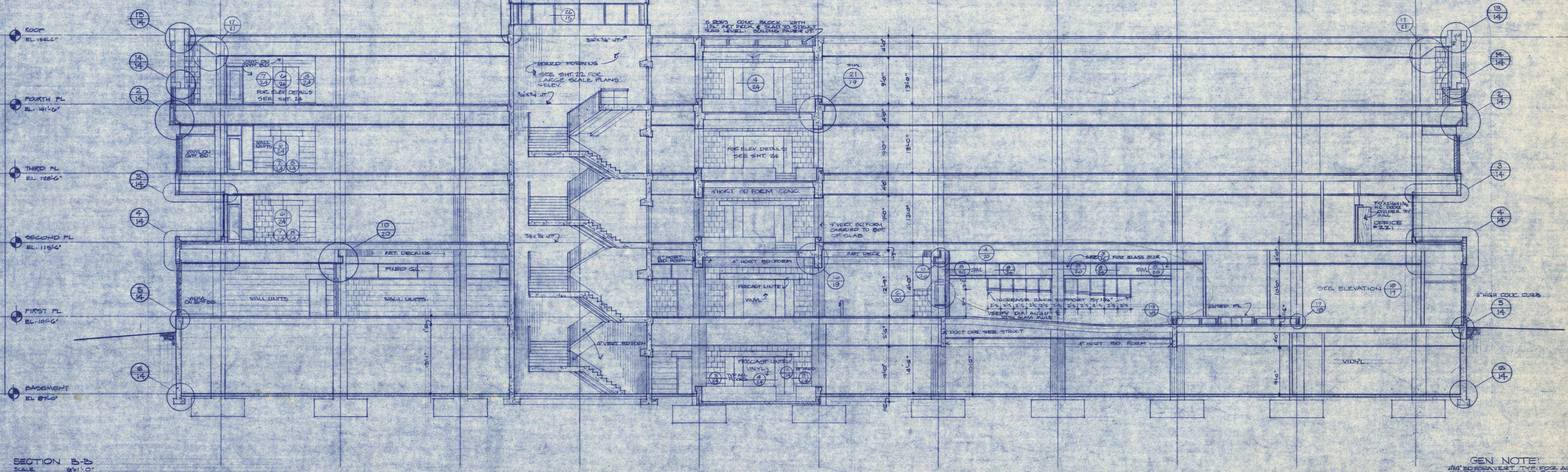
NORTH ELEVATION
SCALE 1/8" = 1'-0"

NOTE: SEE STRUCT. FOR FOOTING LOCATION

F E D C B A

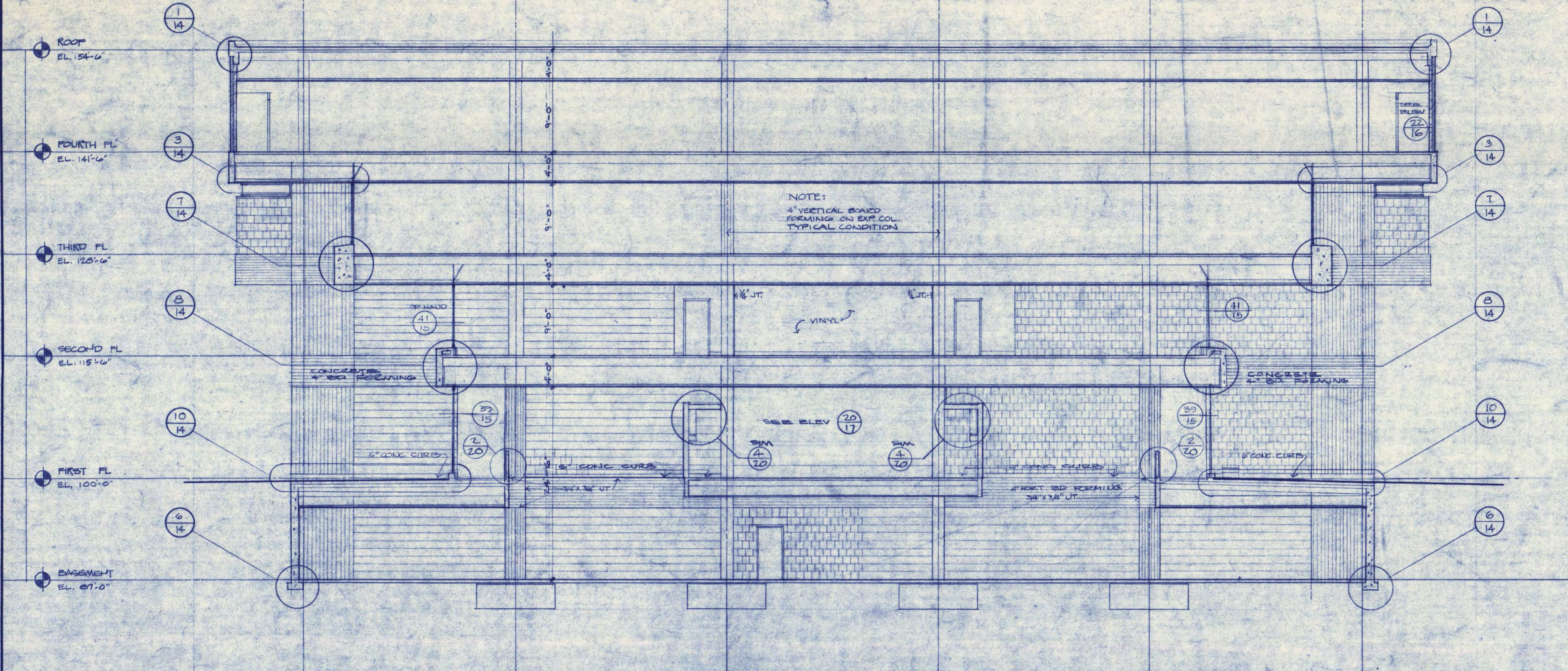


1 2 3 4 5 6 7 8 9 10 11



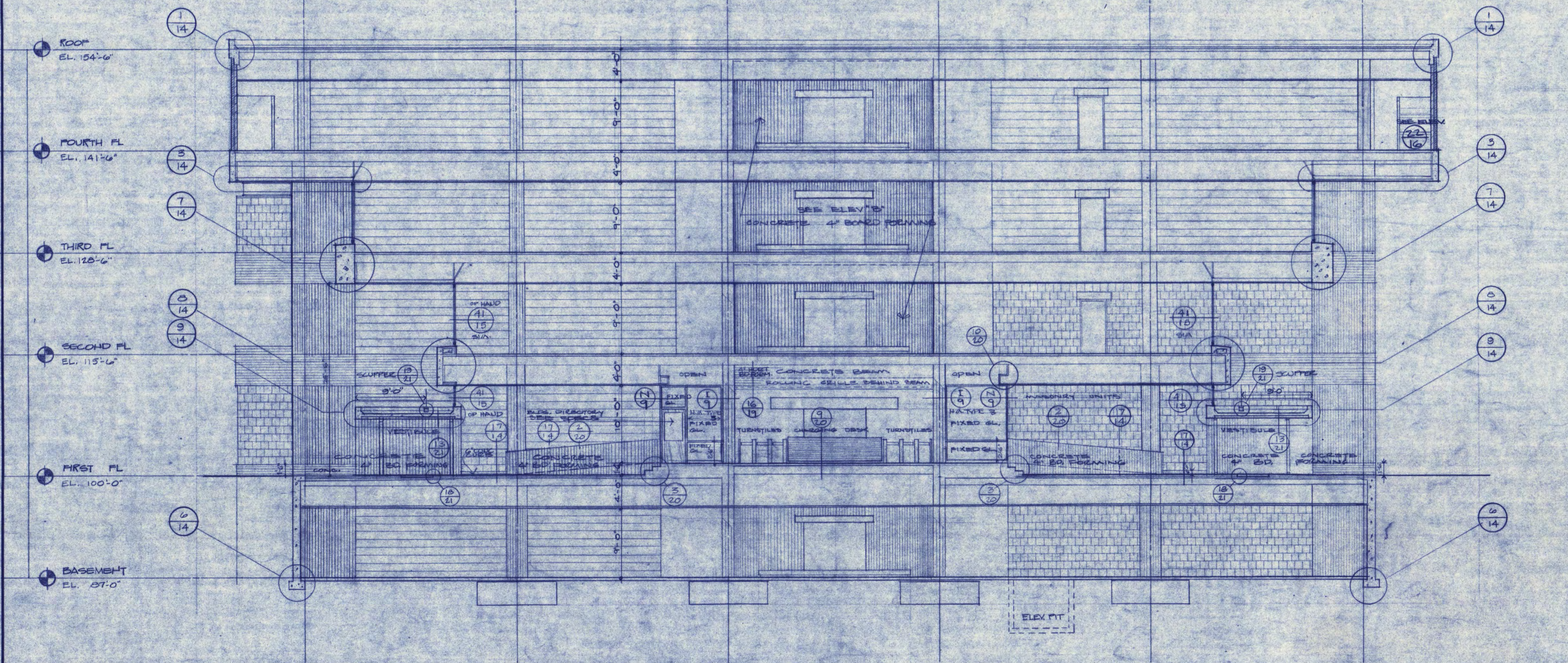
GEN. NOTE:
4" HIGH COUL. CURB.
SEE ELEVATION 18
TO BE INSTALLED BY OTHER CONTRACTOR
OFFICE 221
SEE STRUCT. FOR FOOTING, LOCATION

A B C D E F



SECTION C-C
SCALE 1/8" = 1'-0"

F E D C B A



SECTION D-D
SCALE 1/8" = 1'-0"

NOTE:
SEE STRUCT FOR FOOTING LOCATIONS