

FIRST FLOOR ELECTRICAL PLAN UNIT B (PWR & MISC)

EDUCATION BUILDING ST. CLOUD STATE COLLEGE

TRAYNOR, HERMANSON & HAHN ARCHITECTS INC.
ST. CLOUD, MINNESOTA
STRUCTURAL ENGINEERS JOHNSTON & SAHLMAN, INC. MPLS., MINN.
CONSULTING ENGINEERS GAUSMAN & MOORE, INC. ST. PAUL, MINN.

SHEET NO. **E-6**
OF 11

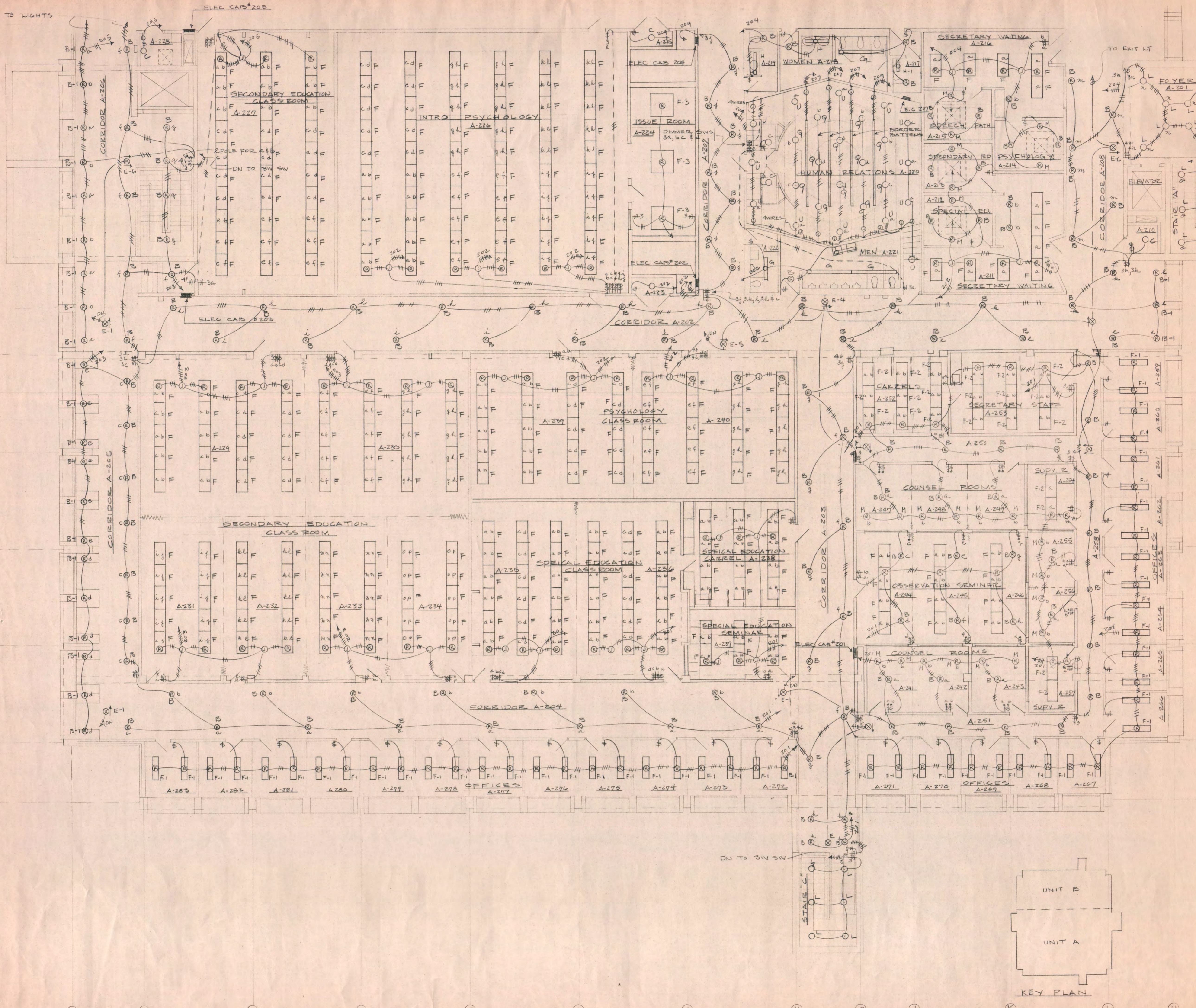
DRAWN _____ CHECKED _____ DATE NOV - 10, 1967

STATE OF MINNESOTA
DEPARTMENT OF ADMINISTRATION
ARCHITECTURAL AND ENGINEERING DIVISION
ROOM 6-10 ADMINISTRATION BUILDING
ST. PAUL 55101

APPROVED BY _____
APPROVED BY _____
APPROVED BY _____

STATE PROJECT NO. 6360150

COMMISSIONER OF ADMINISTRATION
AN AUTHORIZED SIGNATURE



1/8" = 1'0"

SECOND FLOOR ELECTRICAL PLAN UNIT A (LTG)
EDUCATION BUILDING ST. CLOUD STATE COLLEGE

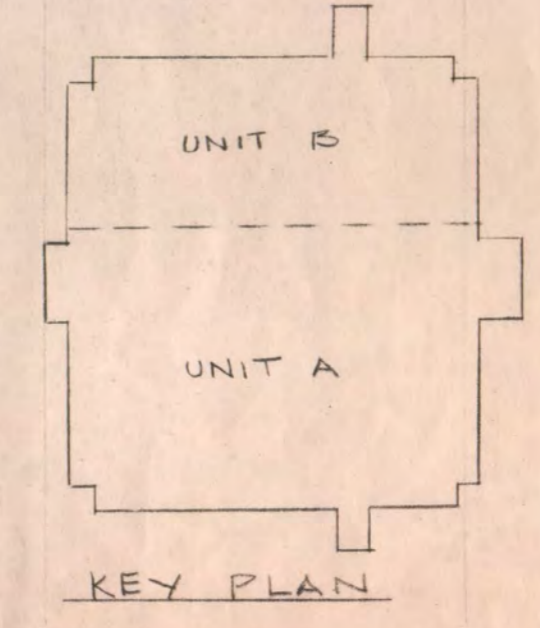
TRAYNOR, HERMANSON & HAHN ARCHITECTS INC.
 ST. CLOUD, MINNESOTA
 STRUCTURAL ENGINEERS JOHNSTON & SAHLMAN, INC. MPLS., MINN.
 CONSULTING ENGINEERS GAUSMAN & MOORE, INC. ST. PAUL, MINN.

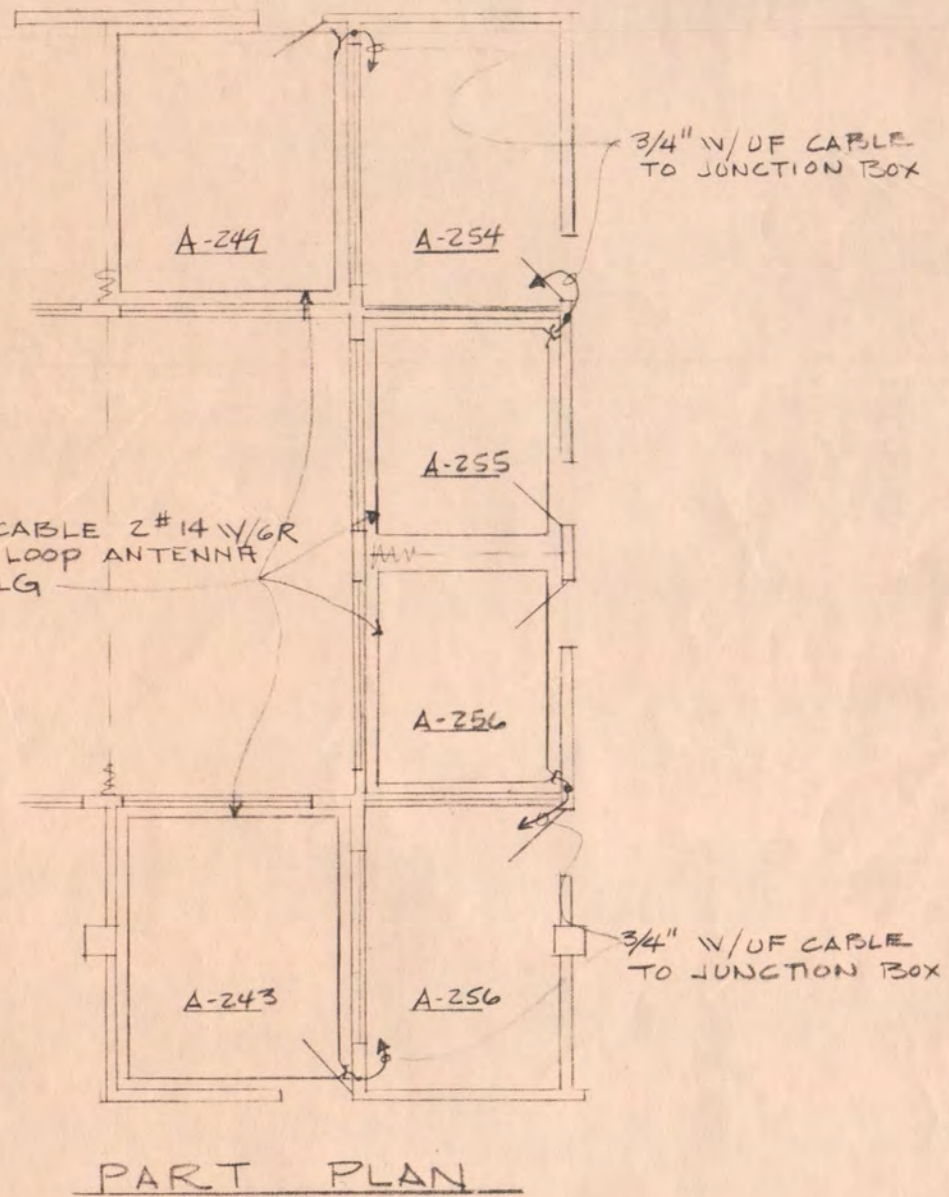
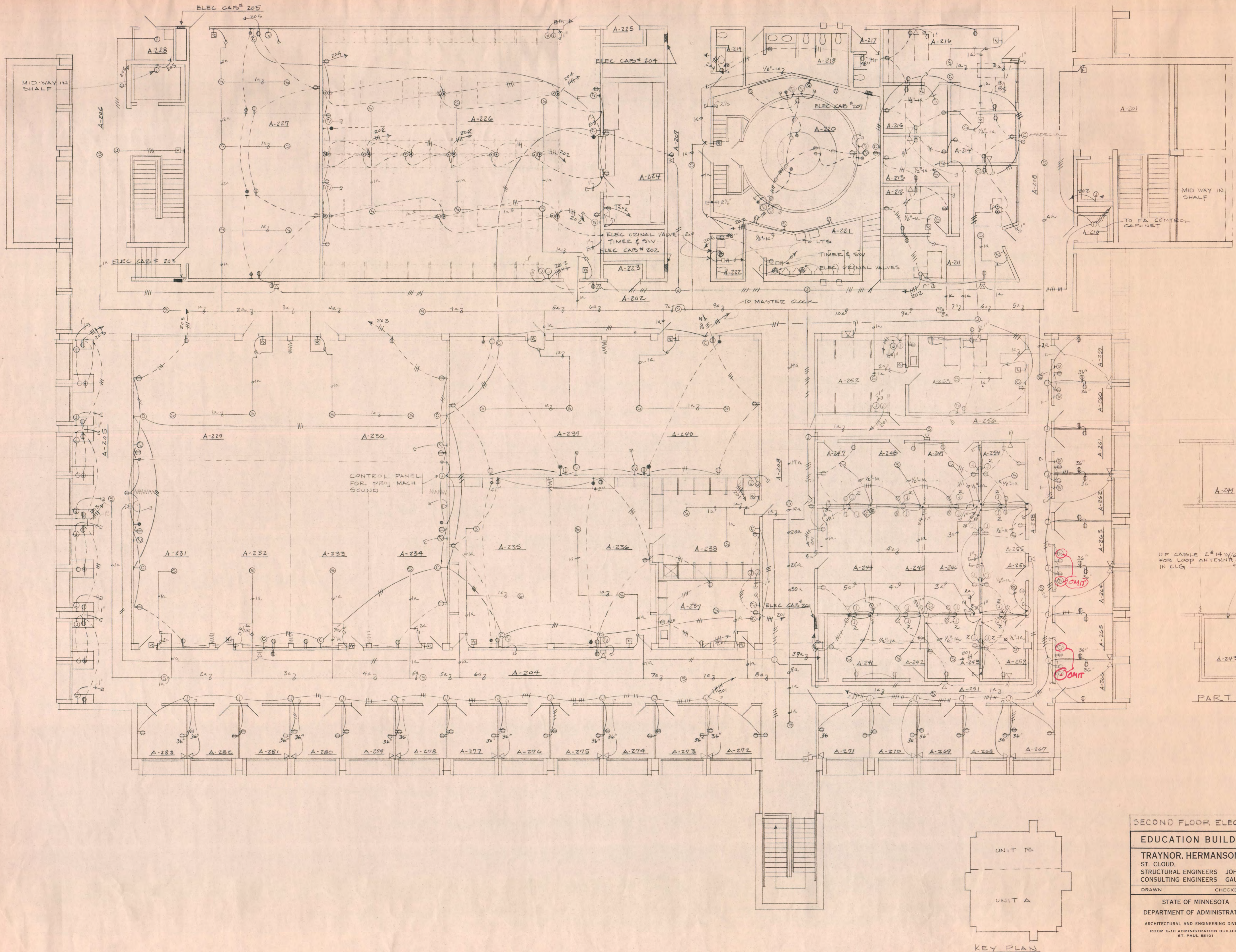
DRAWN _____ CHECKED _____ DATE NOV. 10, 1969 SHEET NO. 7 OF 11

STATE OF MINNESOTA
 DEPARTMENT OF ADMINISTRATION
 ARCHITECTURAL AND ENGINEERING DIVISION
 ROOM 6-10 ADMINISTRATION BUILDING
 ST. PAUL 55101

APPROVED BY _____
 APPROVED BY _____
 APPROVED BY _____

STATE PROJECT NO. 6360150 COMMISSIONER OF ADMINISTRATION
 AN AUTHORIZED SIGNATURE





1/8" = 1'-0"

SECOND FLOOR ELECTRICAL PLAN UNIT A (PWR & MISC)
 EDUCATION BUILDING ST. CLOUD STATE COLLEGE

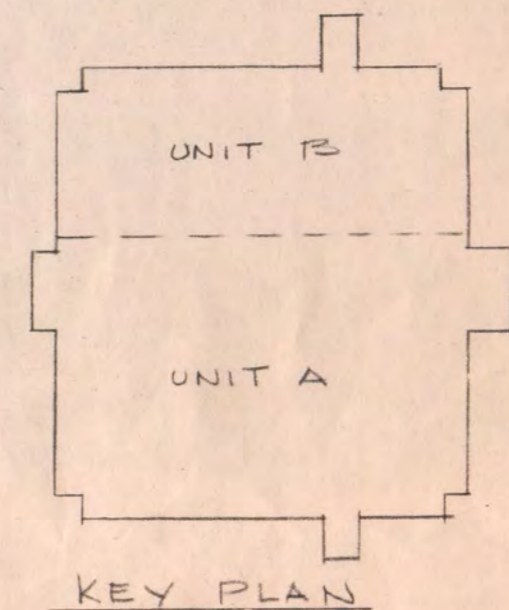
TRAYNOR, HERMANSON & HAHN ARCHITECTS INC.
 ST. CLOUD, MINNESOTA
 STRUCTURAL ENGINEERS JOHNSTON & SAHLMAN, INC. MPLS., MINN.
 CONSULTING ENGINEERS GAUSMAN & MOORE, INC. ST. PAUL, MINN.

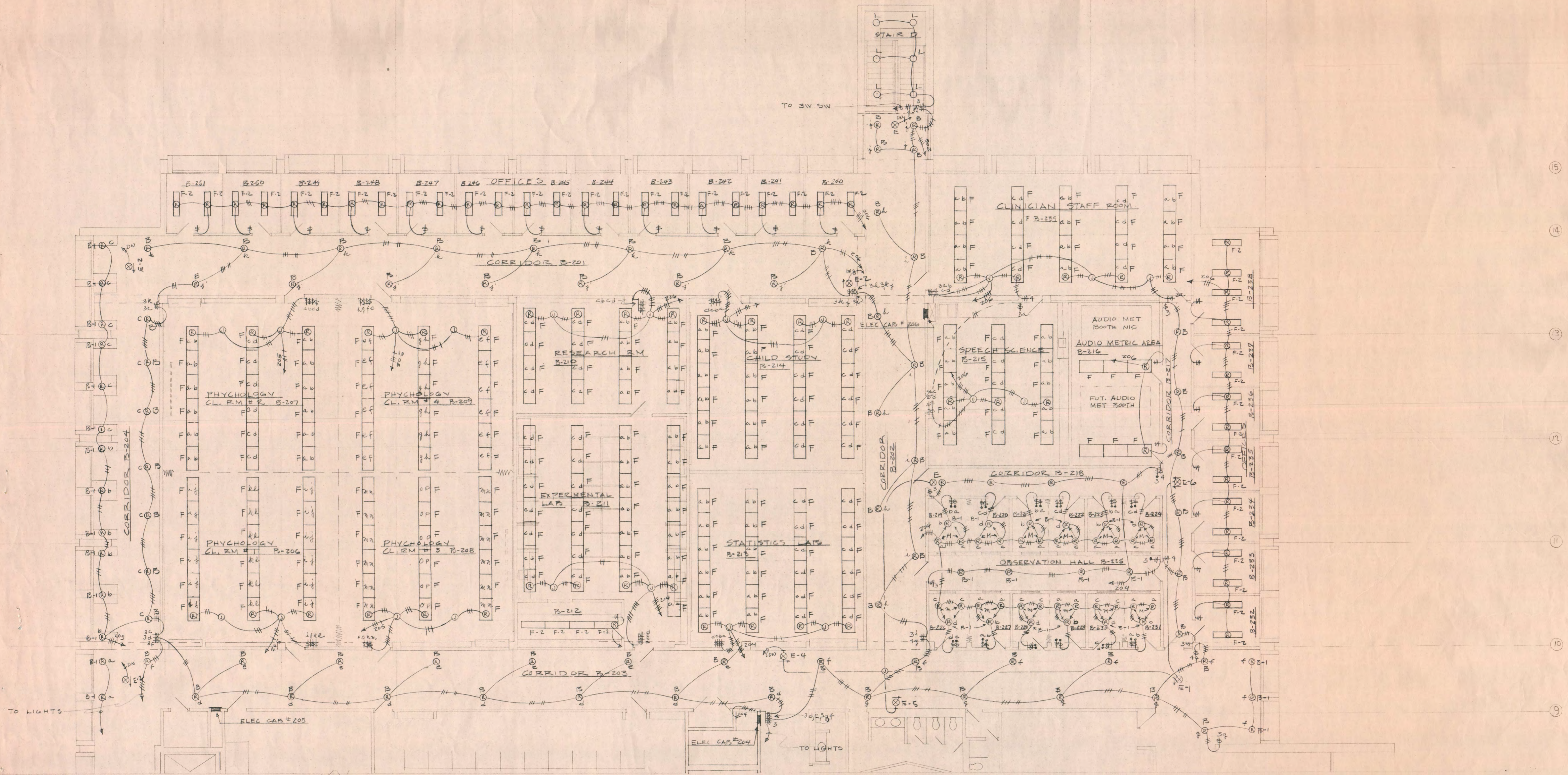
DRAWN _____ CHECKED _____ DATE NOV. 10, 1969 OF 11

STATE OF MINNESOTA
 DEPARTMENT OF ADMINISTRATION
 ARCHITECTURAL AND ENGINEERING DIVISION
 ROOM G-10 ADMINISTRATION BUILDING
 ST. PAUL 55101

APPROVED BY _____
 APPROVED BY _____
 APPROVED BY _____
 COMMISSIONER OF ADMINISTRATION
 AN AUTHORIZED SIGNATURE

STATE PROJECT NO. 6360150





15
14
13
12
11
10
9

1/8" = 1'-0"

SECOND FLOOR ELECTRICAL PLAN UNIT B (LT9)

EDUCATION BUILDING ST. CLOUD STATE COLLEGE

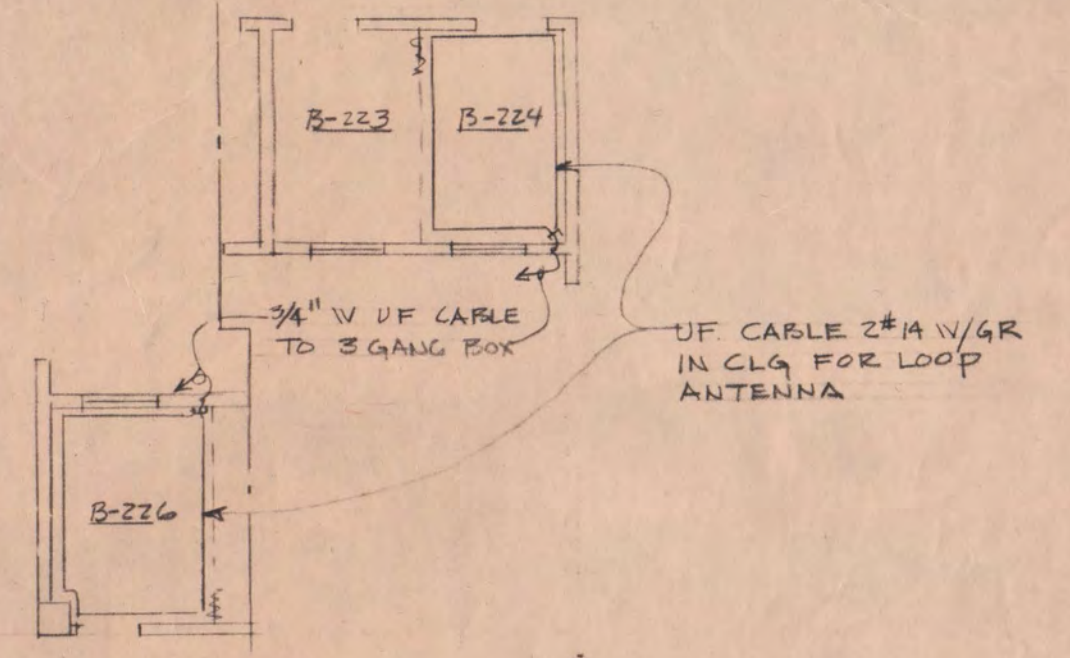
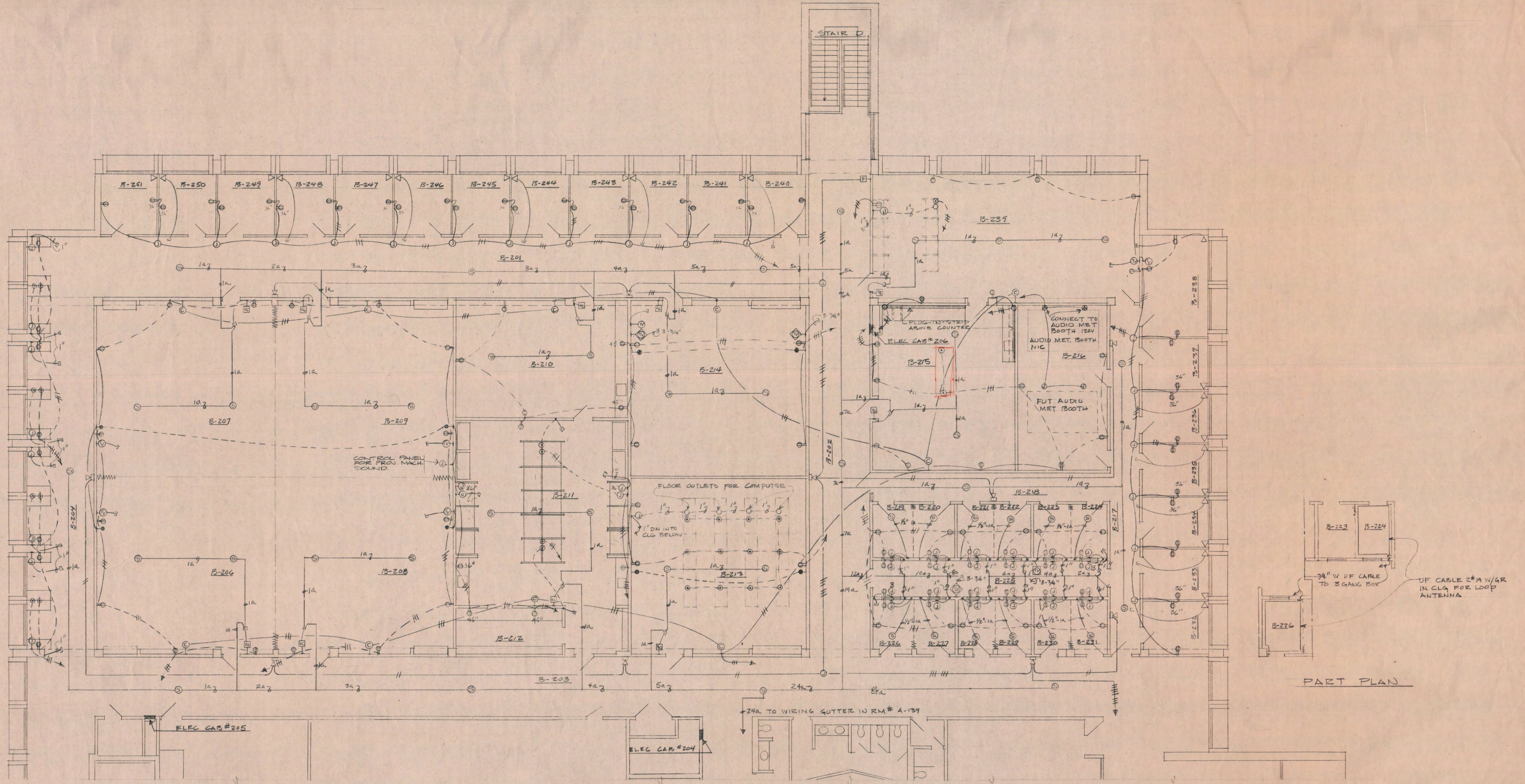
TRAYNOR, HERMANSON & HAHN ARCHITECTS INC.
ST. CLOUD, MINNESOTA
STRUCTURAL ENGINEERS JOHNSTON & SAHLMAN, INC. MPLS., MINN.
CONSULTING ENGINEERS GAUSMAN & MOORE, INC. ST. PAUL, MINN.

SHEET NO. **E-9**
OF 11

DRAWN _____ CHECKED _____ DATE NOV. 10, 1969	APPROVED BY _____ APPROVED BY _____ APPROVED BY _____ <small>COMMISSIONER OF ADMINISTRATION AN AUTHORIZED SIGNATURE</small>
--	--

STATE OF MINNESOTA
DEPARTMENT OF ADMINISTRATION
ARCHITECTURAL AND ENGINEERING DIVISION
ROOM G-10 ADMINISTRATION BUILDING
ST. PAUL 55101

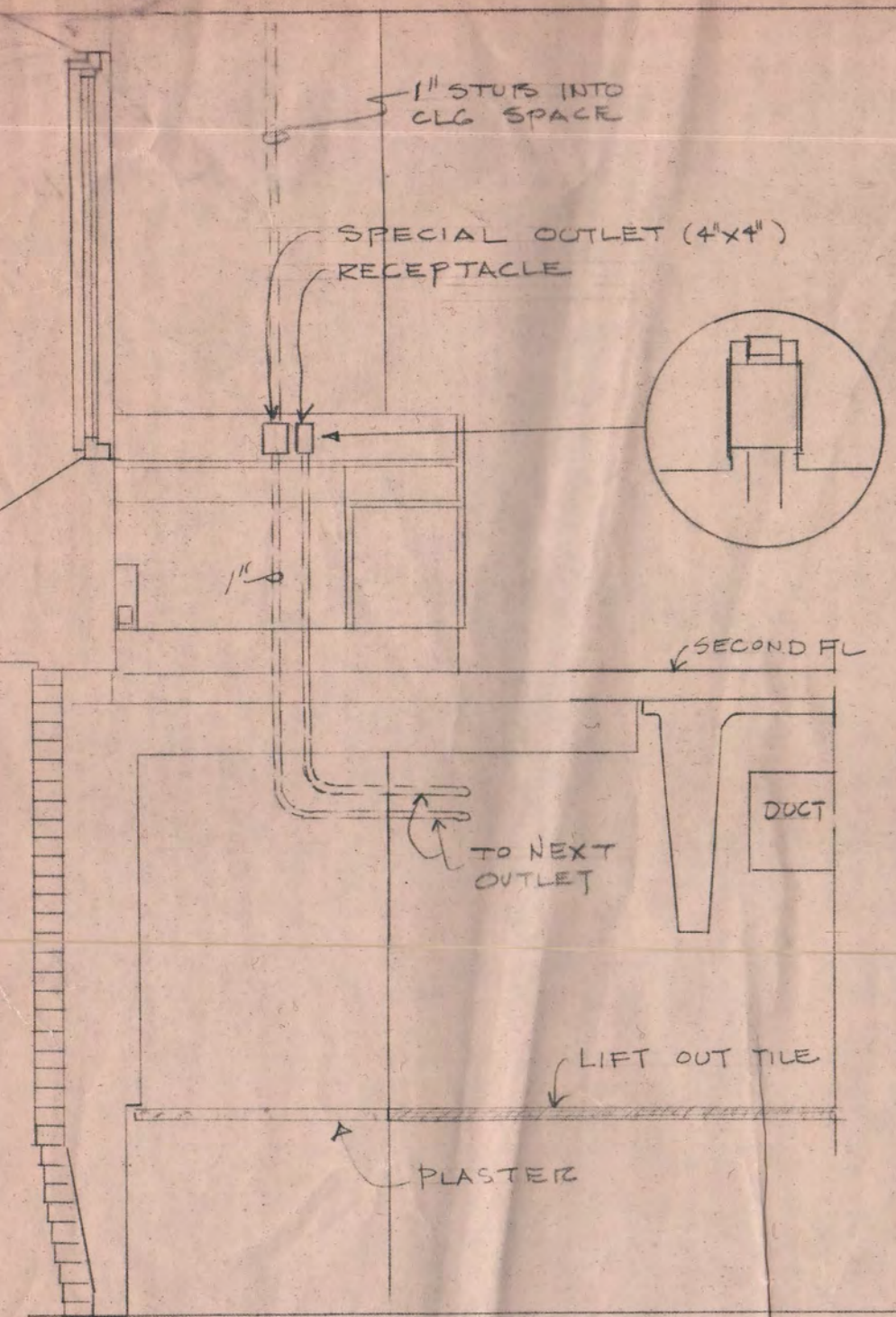
STATE PROJECT NO. **6360150**



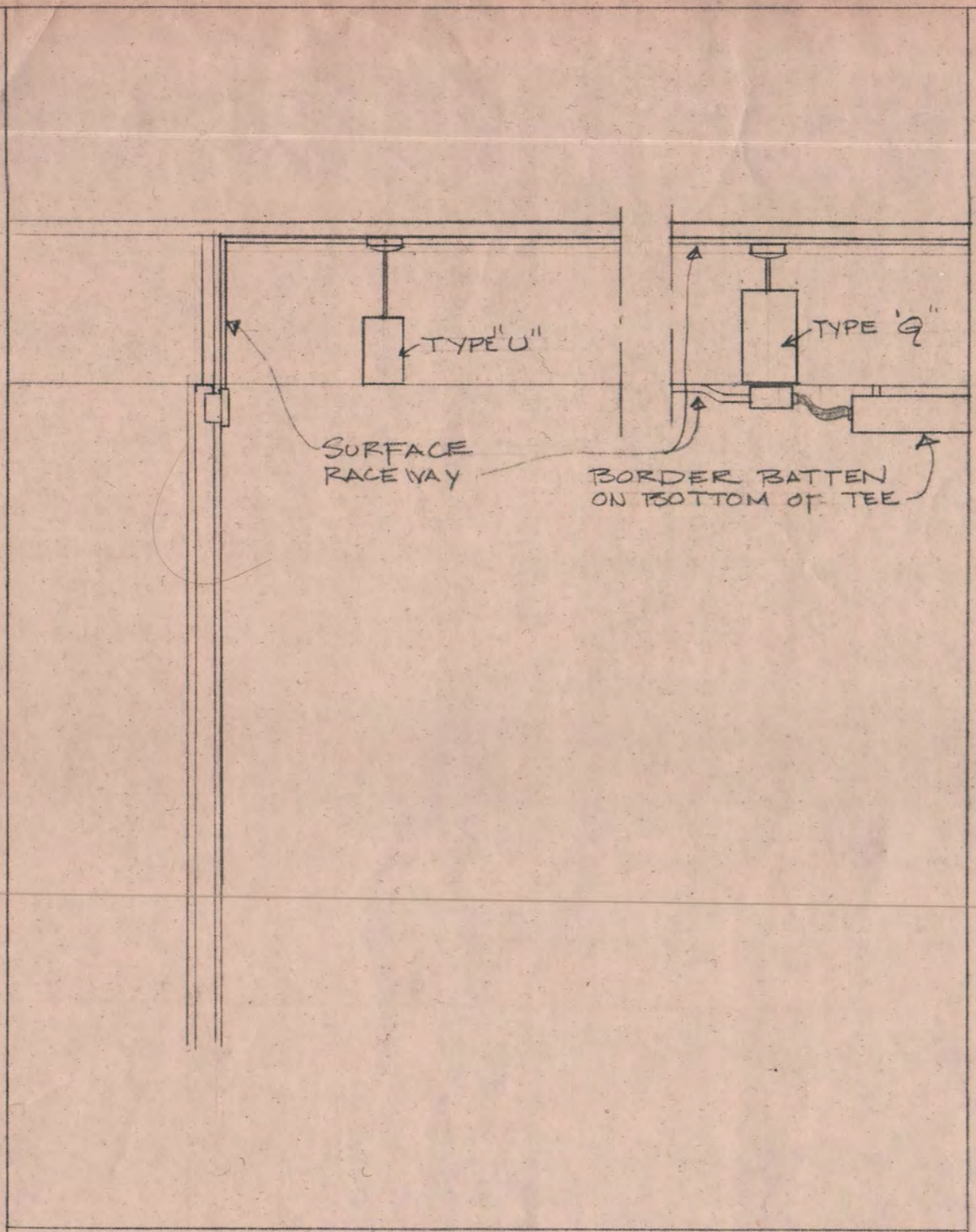
PART PLAN

1/8" = 1'-0"

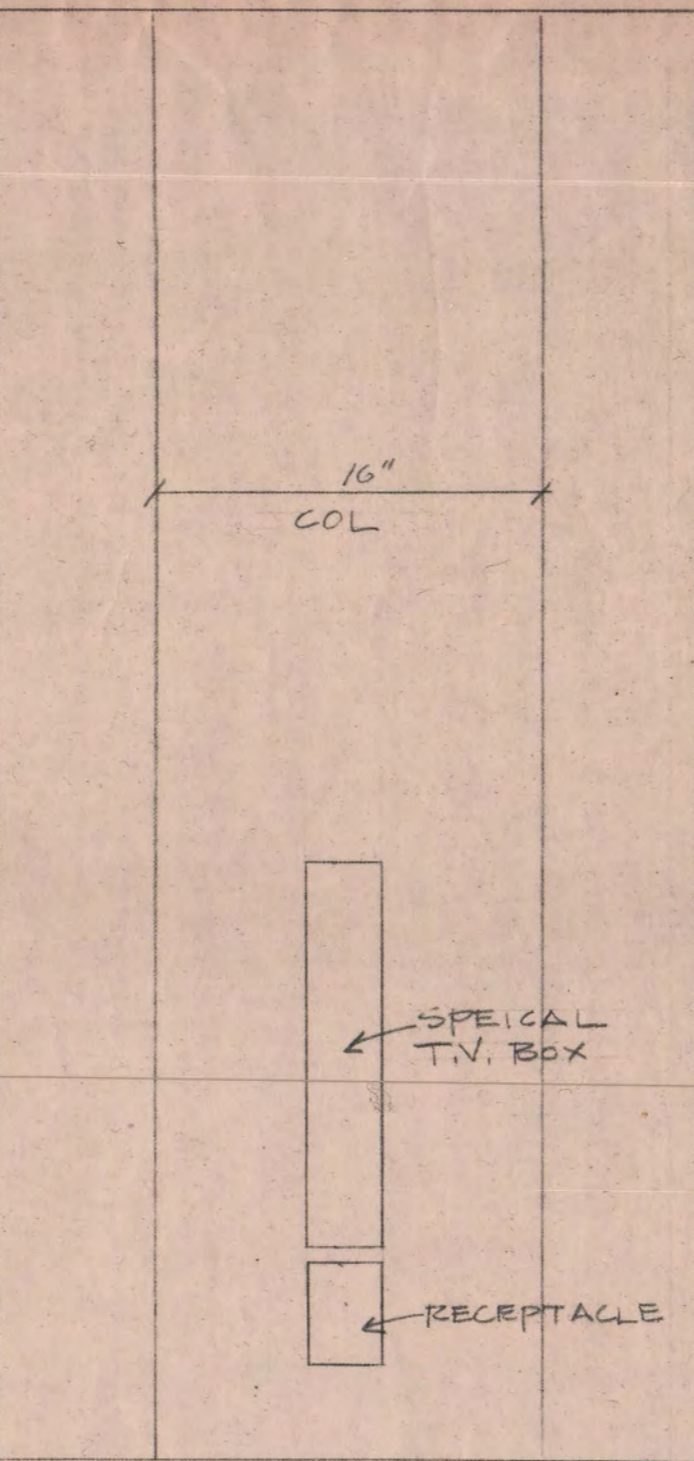
SECOND FLOOR ELECTRICAL PLAN UNIT B (PVR & MISC)	
EDUCATION BUILDING ST. CLOUD STATE COLLEGE	
TRAYNOR, HERMANSON & HAHN ARCHITECTS INC. ST. CLOUD, MINNESOTA	SHEET NO. E-10
STRUCTURAL ENGINEERS JOHNSTON & SAHLMAN, INC. MPLS., MINN. CONSULTING ENGINEERS GAUSMAN & MOORE, INC. ST. PAUL, MINN.	DATE NOV. 10, 1969
DRAWN	CHECKED
STATE OF MINNESOTA DEPARTMENT OF ADMINISTRATION ARCHITECTURAL AND ENGINEERING DIVISION ROOM G-15 ADMINISTRATION BUILDING ST. PAUL 55101	
APPROVED BY _____	
APPROVED BY _____	
APPROVED BY _____	
STATE PROJECT NO. 6360150	
COMMISSIONER OF ADMINISTRATION AN AUTHORIZED SIGNATURE	



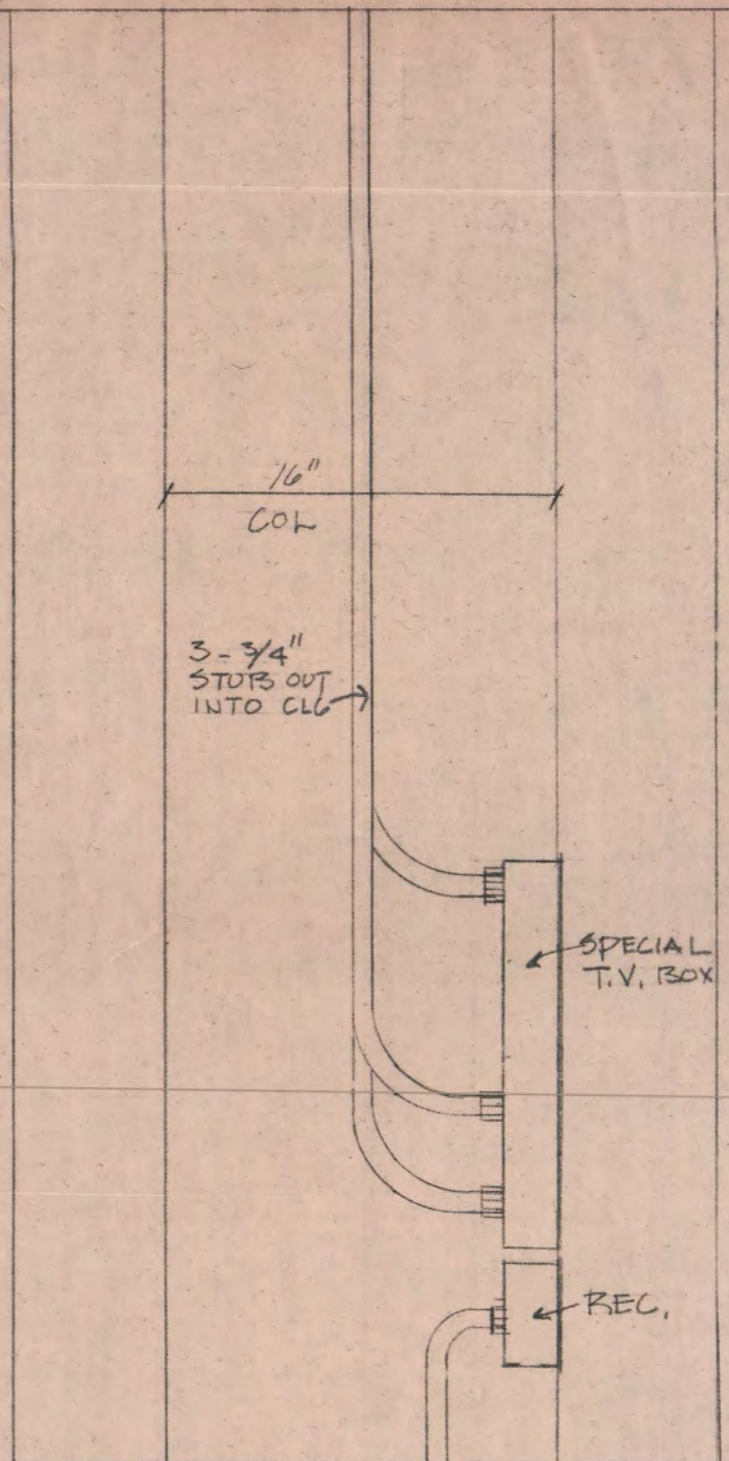
SECTION AT CARBELS AT WINDOW
1/4" = 1'-0"



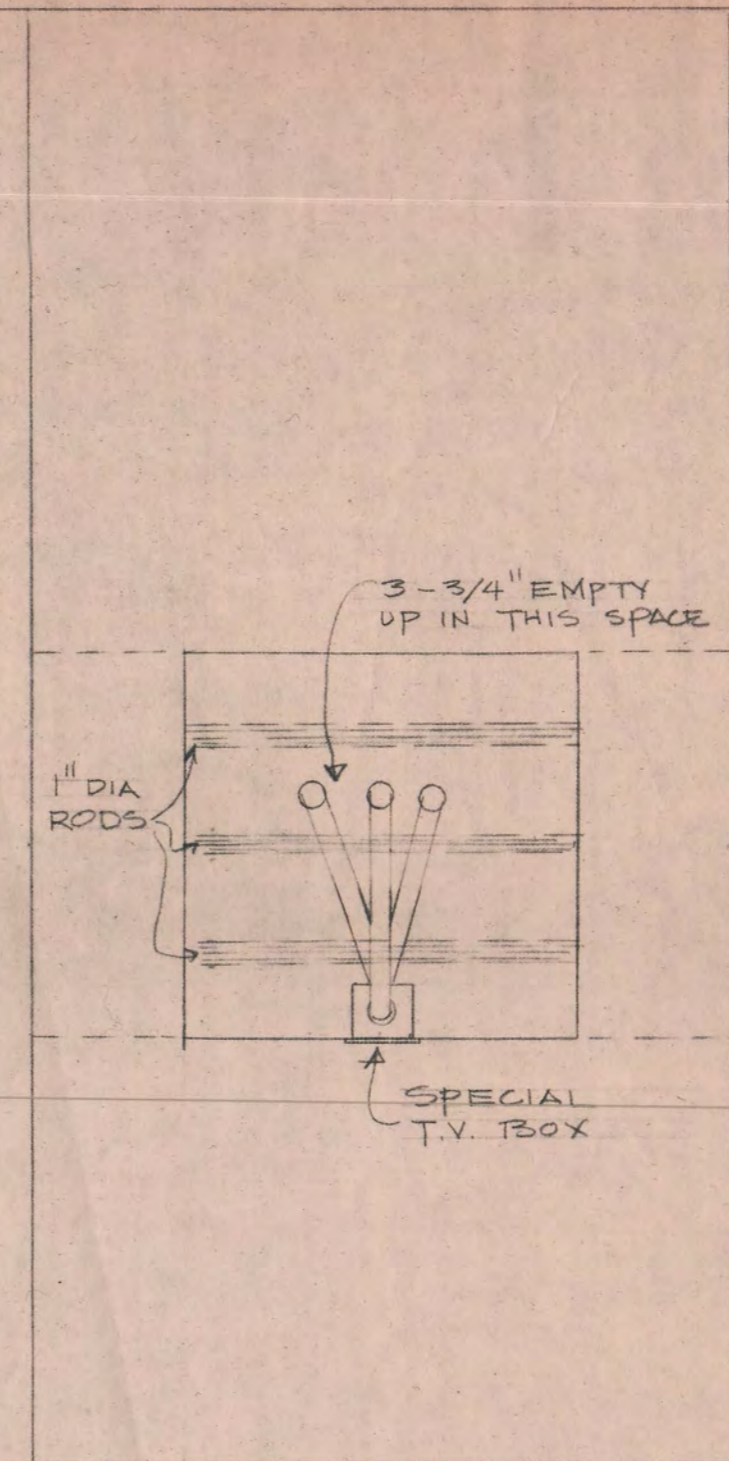
PART SECTION THRU ROOM # A-220
1/2" = 1'-0"



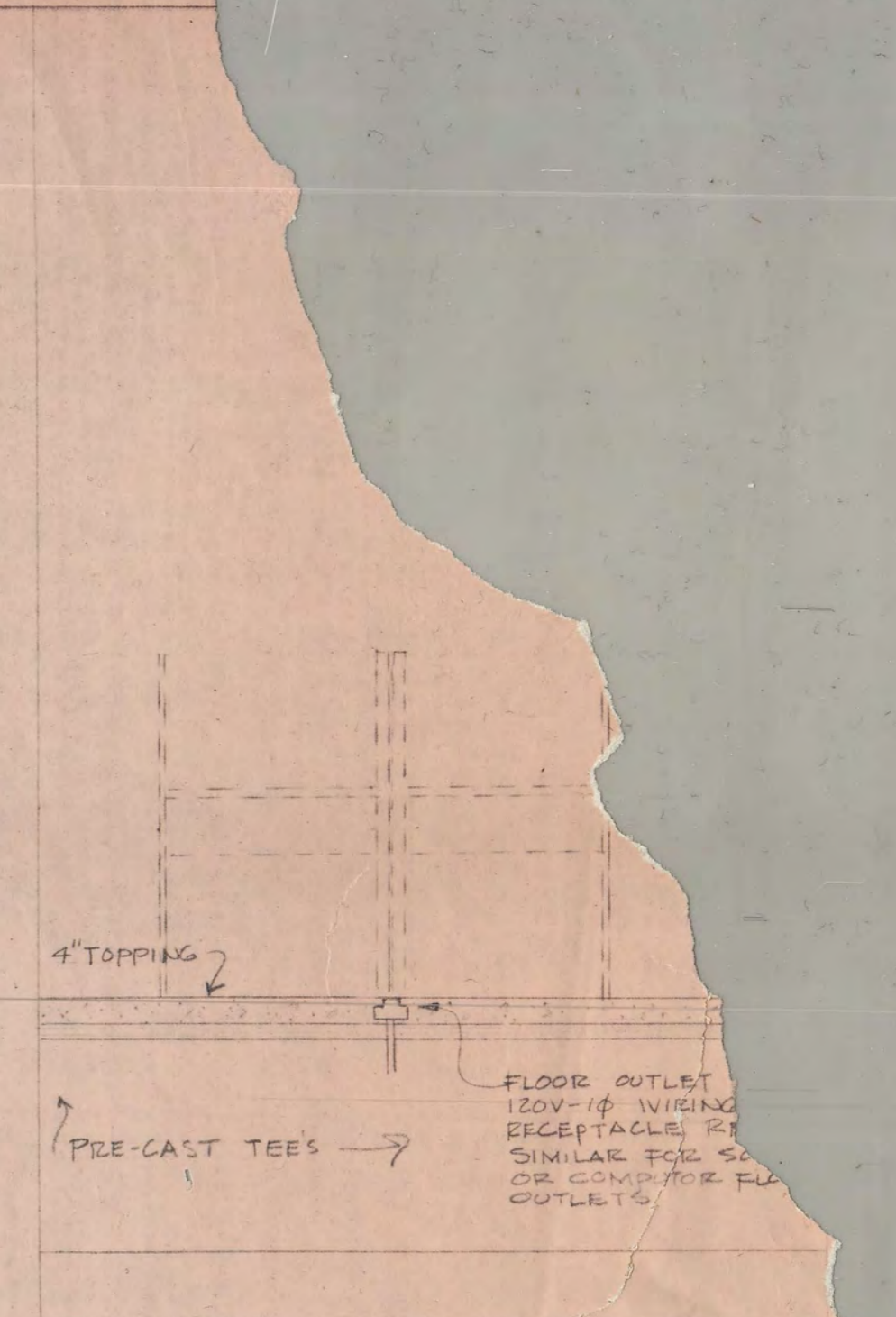
ELEVATION AT COL.
1/2" = 1'-0"



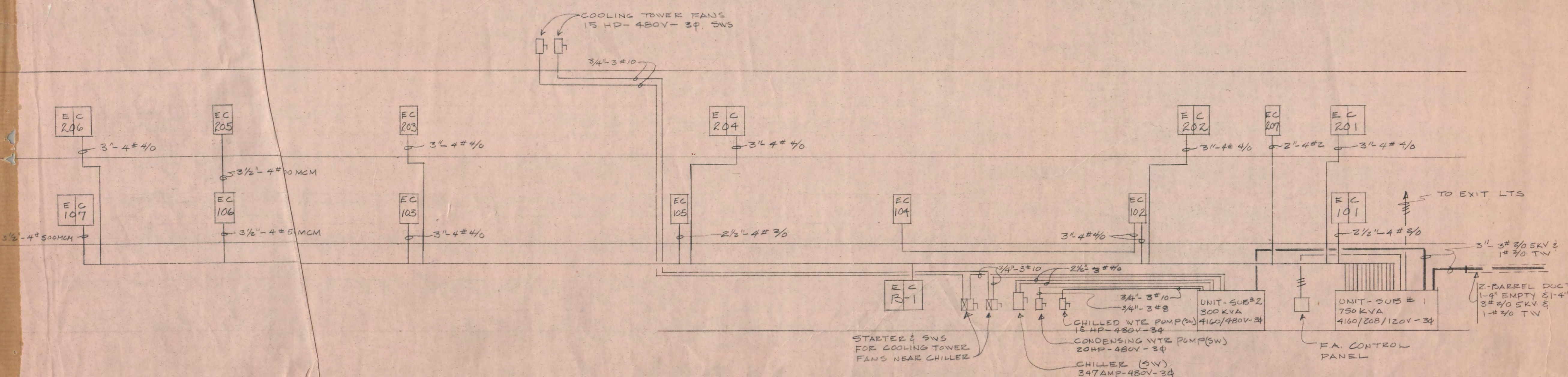
SECTION THRU COL.
1/2" = 1'-0"



PLAN AT COL.
1/2" = 1'-0"



DETAIL AT FREE STANDING CARREL
1/2" = 1'-0"



ELECTRIC FEEDER DIAGRAM
NO SCALE

SCALE AS NOTED

DETAILS AND DIAGRAMS

EDUCATION BUILDING ST. CLOUD STATE COLLEGE

TRAYNOR, HERMANSON & HAHN ARCHITECTS INC. ST. CLOUD, MINNESOTA STRUCTURAL ENGINEERS JOHNSTON & SAHLMAN, INC. MPLS. MINN. CONSULTING ENGINEERS GAUSMAN & MOORE, INC. ST. PAUL, MINN.		SHEET NO. E-11 OF 11
DRAWN	CHECKED	DATE NOV. 10, 1969
STATE OF MINNESOTA DEPARTMENT OF ADMINISTRATION ARCHITECTURAL AND ENGINEERING DIVISION ROOM 6-10 ADMINISTRATION BUILDING ST. PAUL 55101		APPROVED BY _____ APPROVED BY _____ APPROVED BY _____ <small>COMMISSIONER OF ADMINISTRATION AN AUTHORIZED SIGNATURE</small>
STATE PROJECT NO. 6360150		