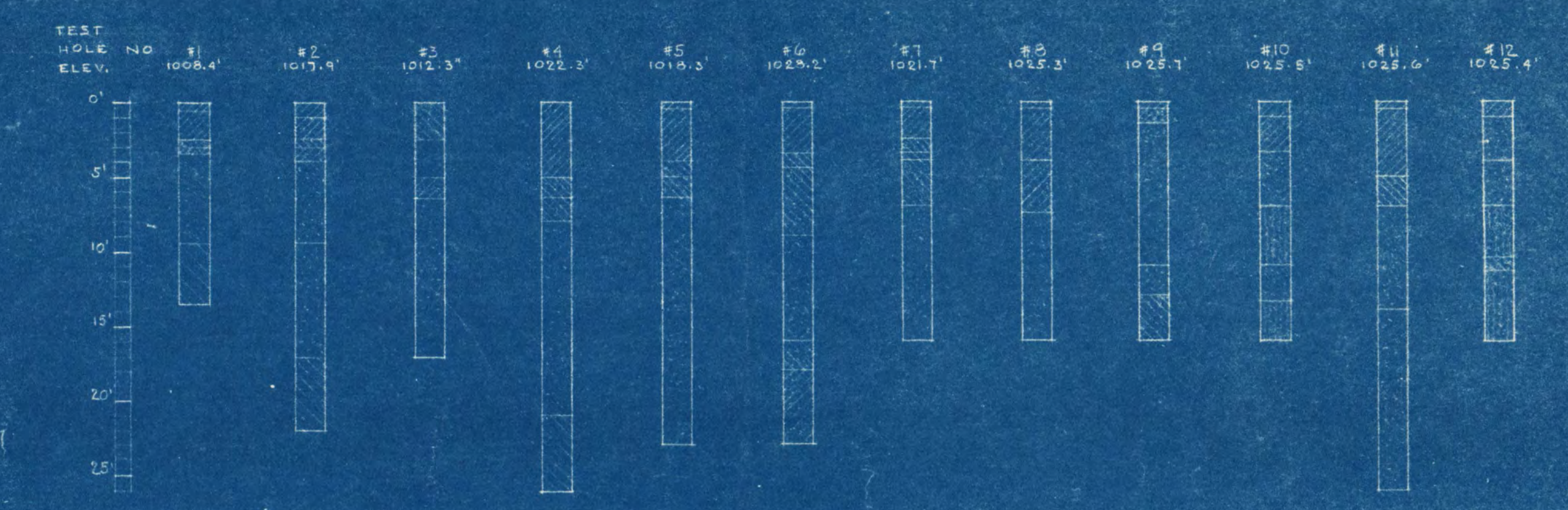
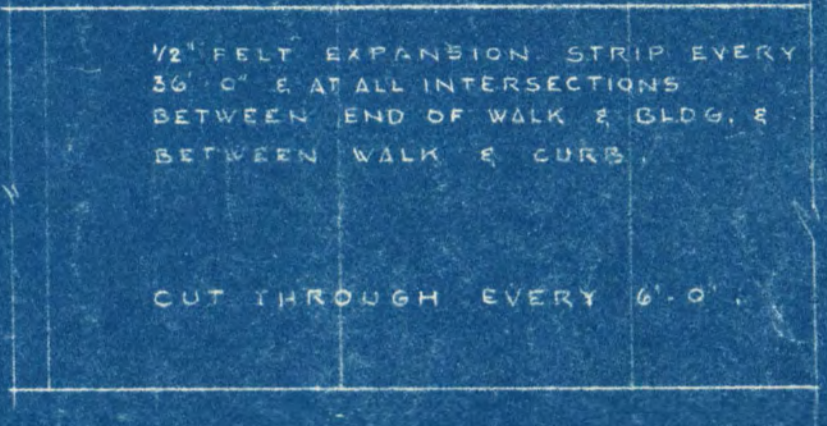


TEST HOLE LOG:



LEGEND:

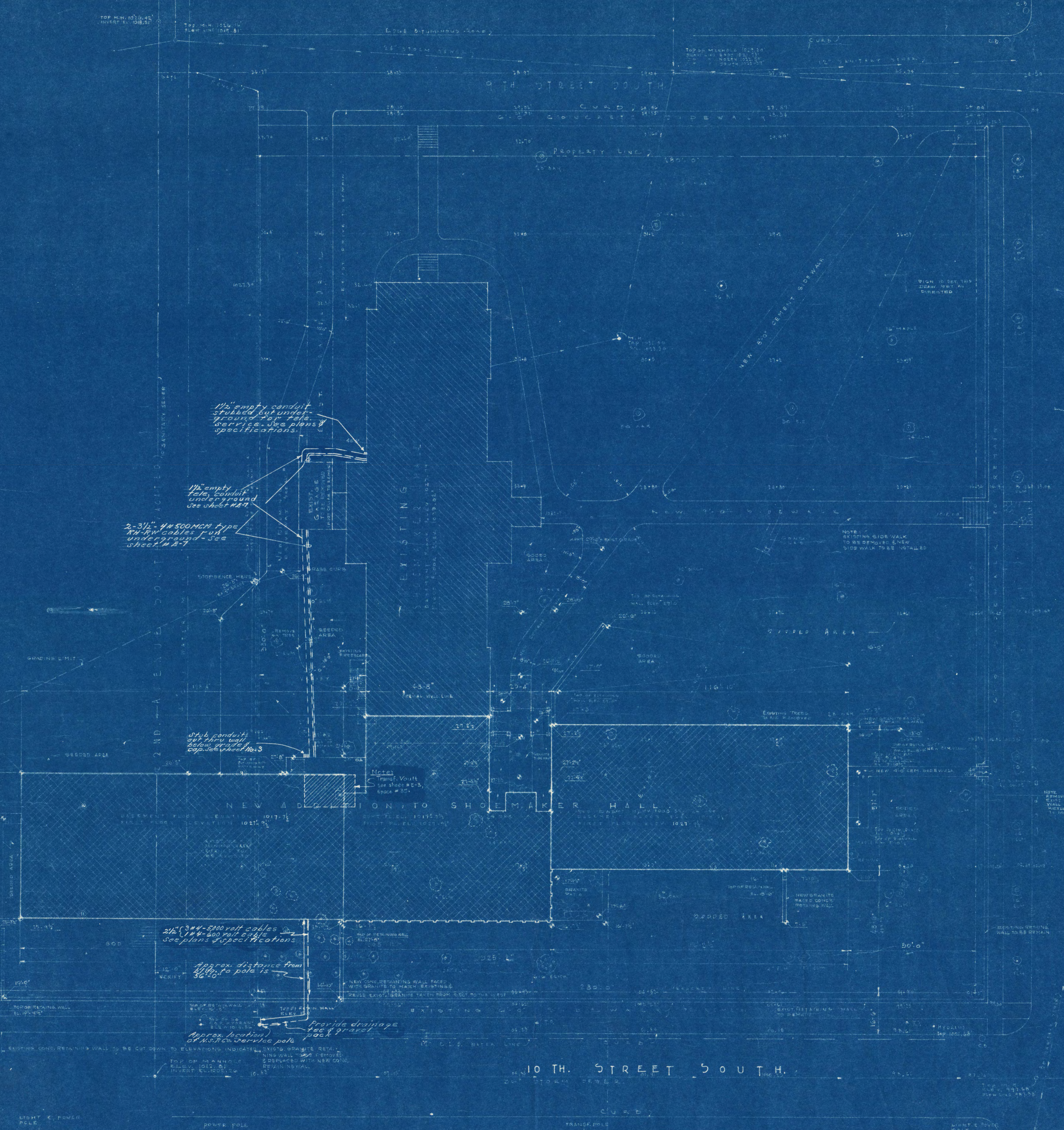
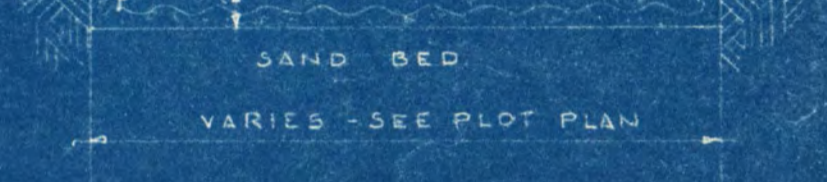
- FILL BLOCK OR DARK BROWN SANDY LOAM WITH LITTLE GRAVEL
- LOAMY SAND WITH A LITTLE GRAVEL
- SAND LIGHT BROWN COARSE SAND WITH SOME GRAVEL
- SANDY LOAM
- CLAY LOAM
- SILTY LOAM
- MEDIUM TO STIFF WITH A LITTLE GRAVEL
- WITH LENSES OF SAND MOST
- LOCATION OF TEST HOLE INDICATED THUS (1)



MATERIAL LEGEND:

- EARTH
- CONCRETE
- FACE BRICK
- TILE
- COMMON BRICK
- METAL IN SECT.
- METAL IN ELEV.
- WOOD IN SECT.
- PRESENT WORK TO BE REMOVED
- PLACE OR CEMENT IN SECTION.
- RIGID INSULATION
- MASONRY BLOCK
- TERRAZZO

WHEN PITCH IS SPECIFIED AS 1/2\"/>



1 1/2\"/>

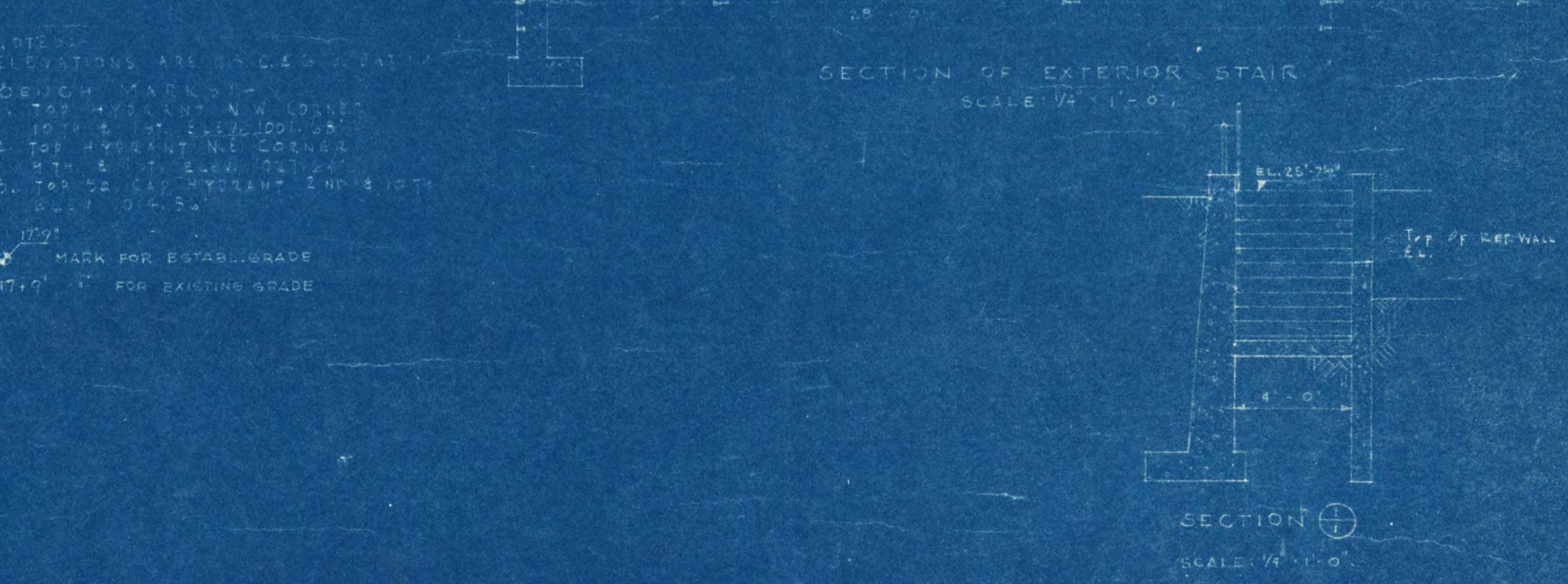
2-3 1/2\"/>

2 1/2\"/>

Provide drainage

PLOT PLAN
SCALE 1/16\"/>

1 ST. AVENUE



PLOT PLAN
Scale as noted

ADDITION TO SHOEMAKER HALL
ST. CLOUD STATE COLLEGE
ST. CLOUD, MINNESOTA

DATE: 1-10-29
DRAWN BY: ETS-TRV
CHECKED BY: 3-2-29

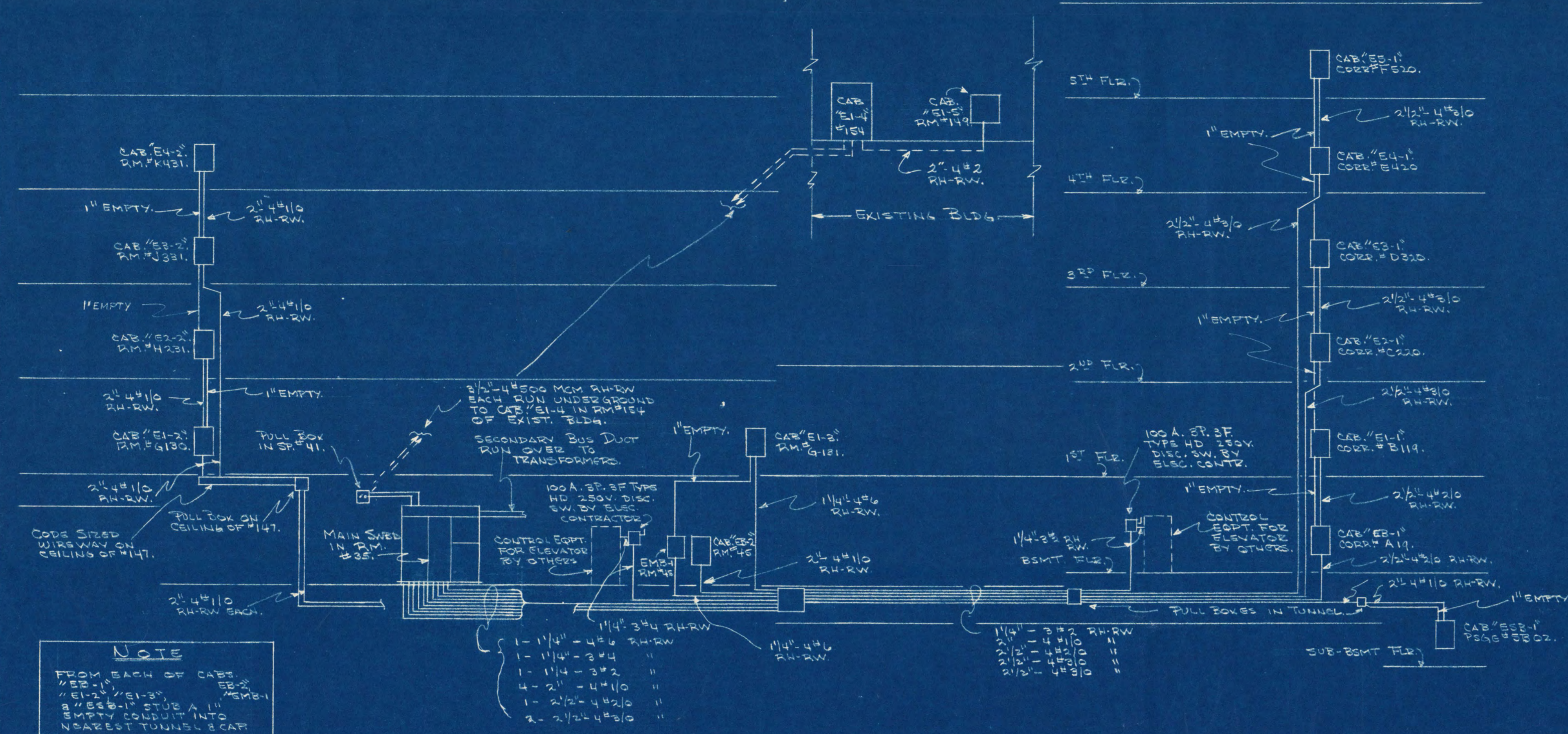
FRANK W. JACKSON & ASSOCIATES, INC.
ENGINEERS & ARCHITECTS
ST. CLOUD, MINNESOTA

ORR SCHELEN, INC.
CONSULTING ENGINEERS
MINNEAPOLIS, MINNESOTA

APPROVED BY: [Signature]
DATE: March 3, 1929, Proj. No. 44574

ST. CLOUD
B-1B

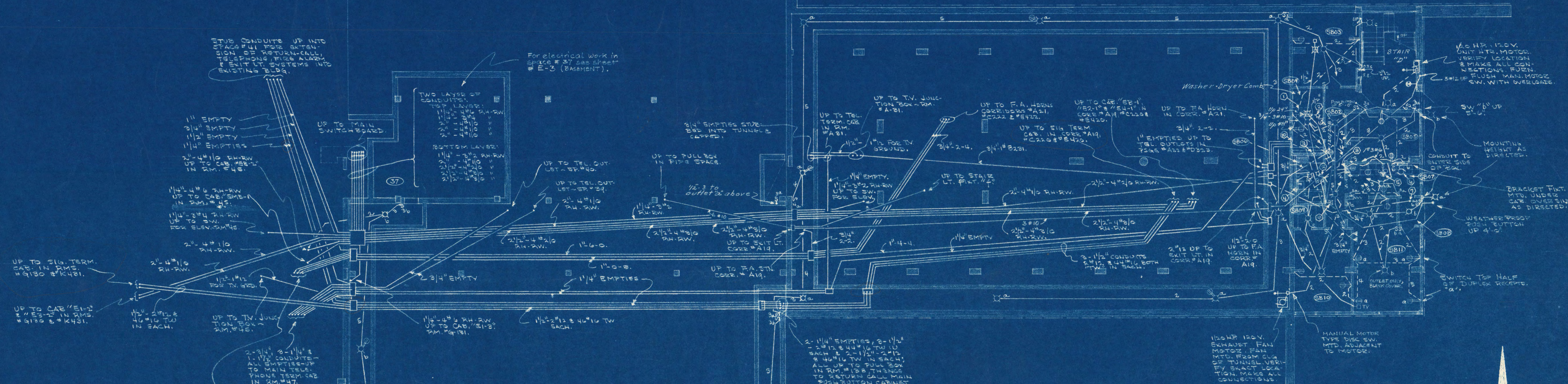
I hereby certify that this plan, specification, or report was prepared by me or under my direct supervision and that I am a duly Registered Professional Engineer under the laws of the State of Minnesota.



RISER DIAGRAM FOR LIGHT & POWER
NOT TO SCALE

Room Schedule

Space	Description
SB-02	CORRIDOR
SB-03	STORAGE
SB-04	STORAGE
SB-05	BED-RM. #2
SB-06	BATH
SB-07	KITCHENETTE
SB-08	VESTIBULE
SB-09	CLOSET
SB-10	MASTER BED RM.
SB-11	LIVING RM., W. DINETTE
STAIR "D"	



SUB-BASEMENT FLOOR PLAN
Scale 1/8"=1'-0"

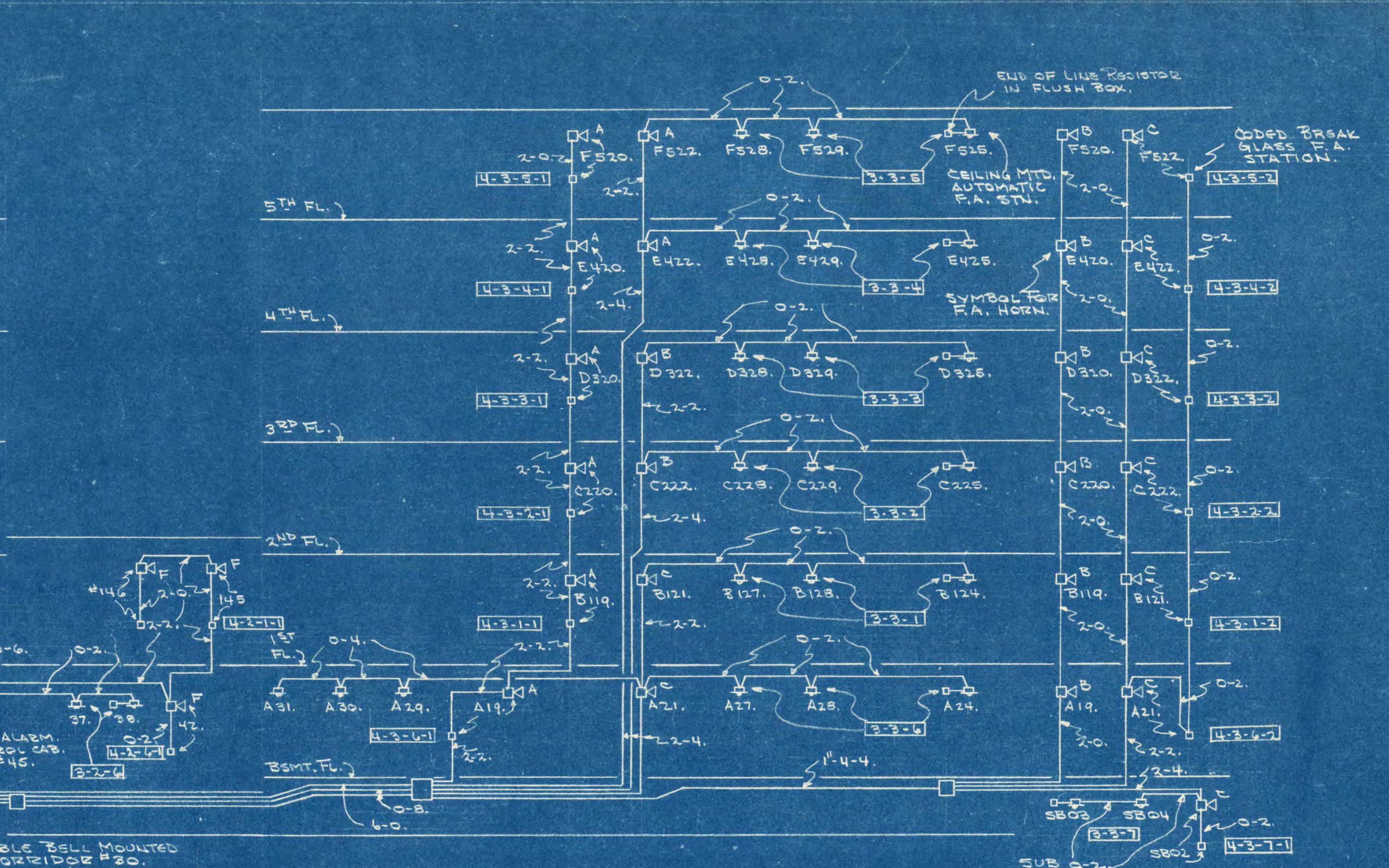
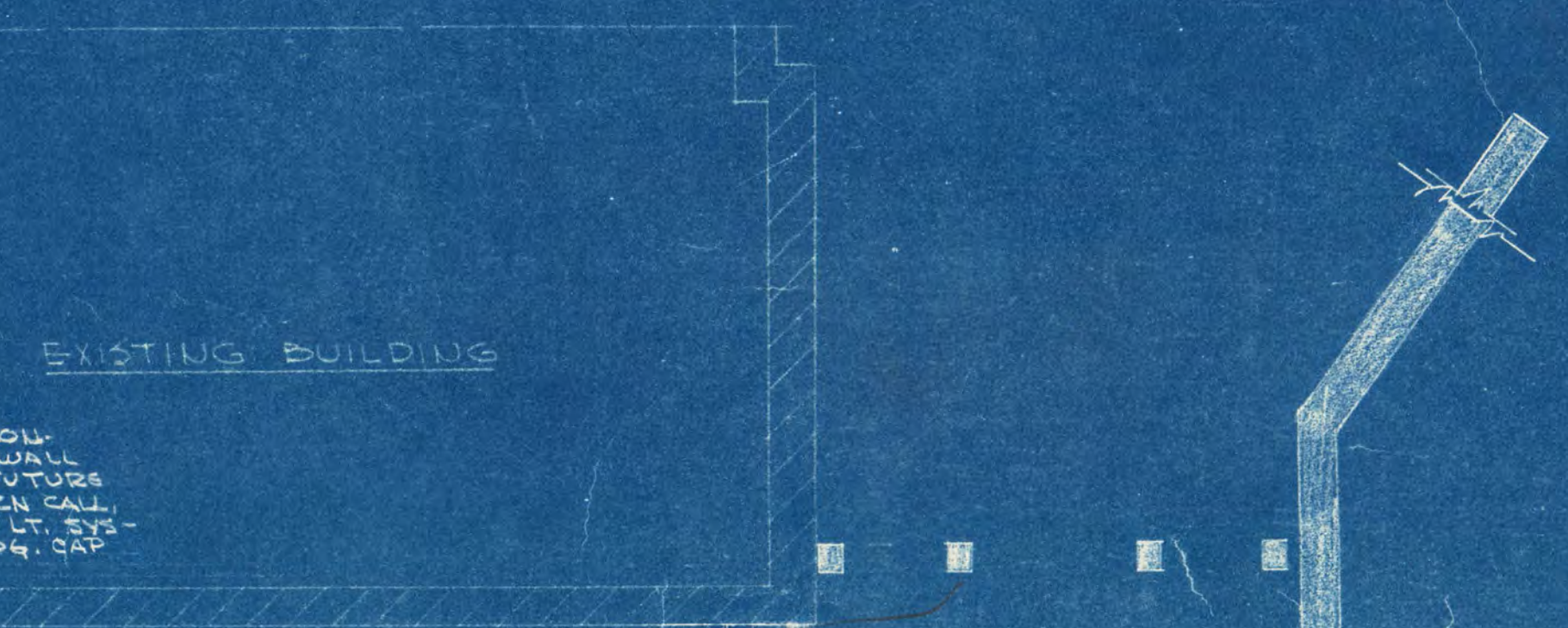
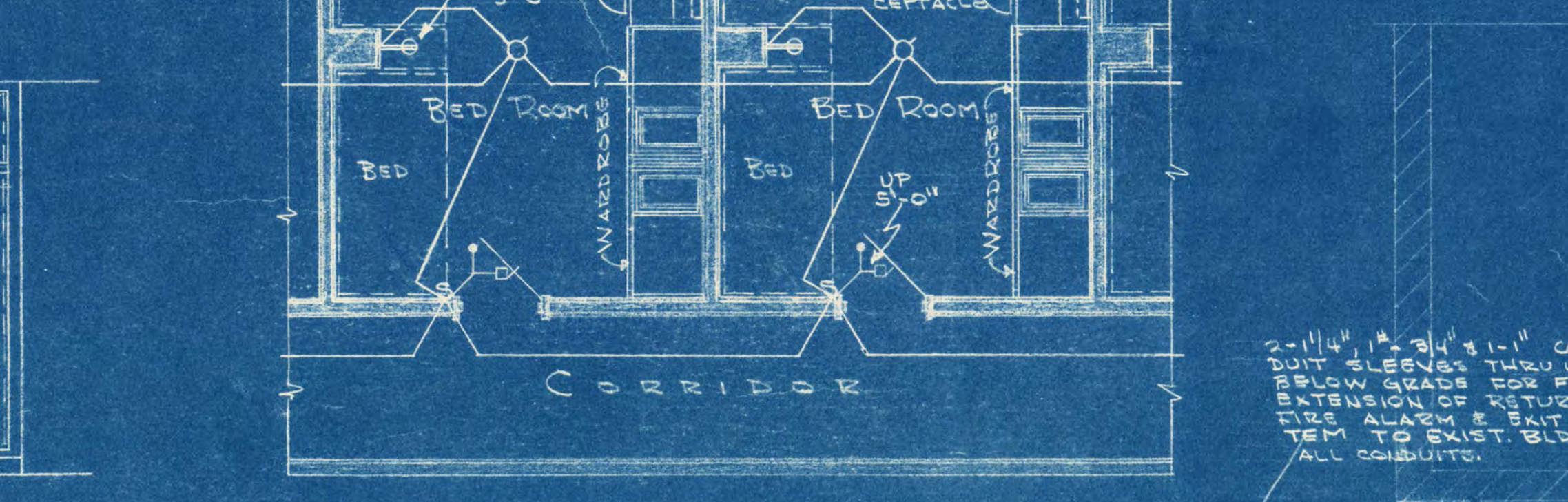
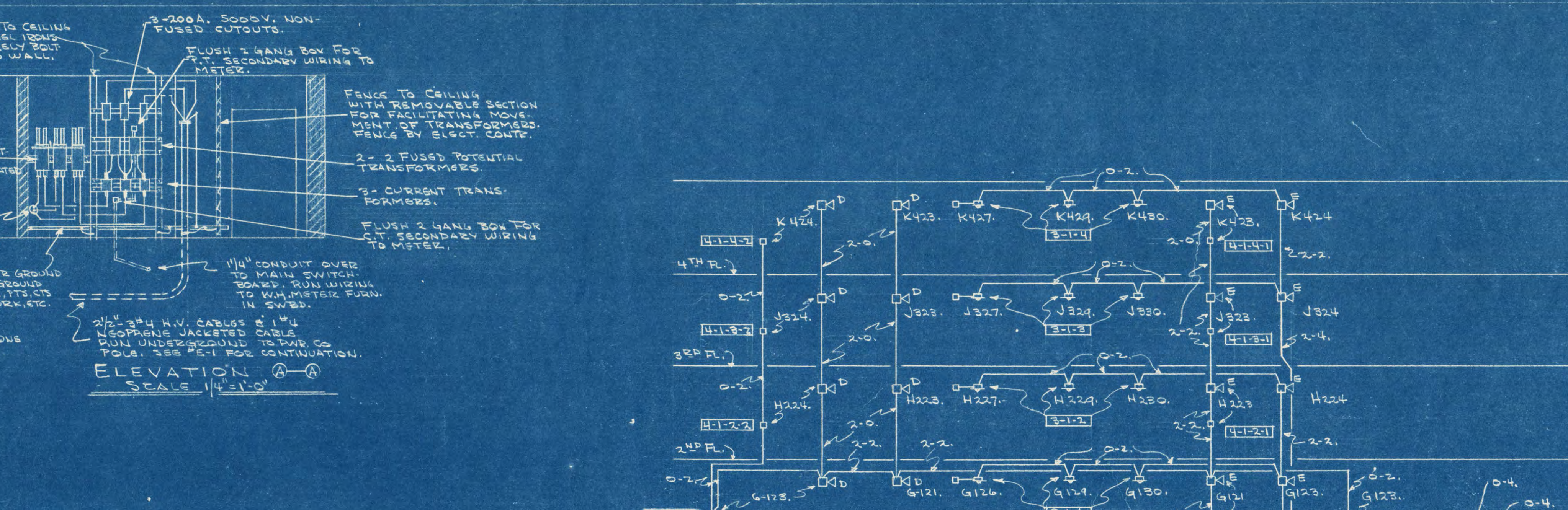
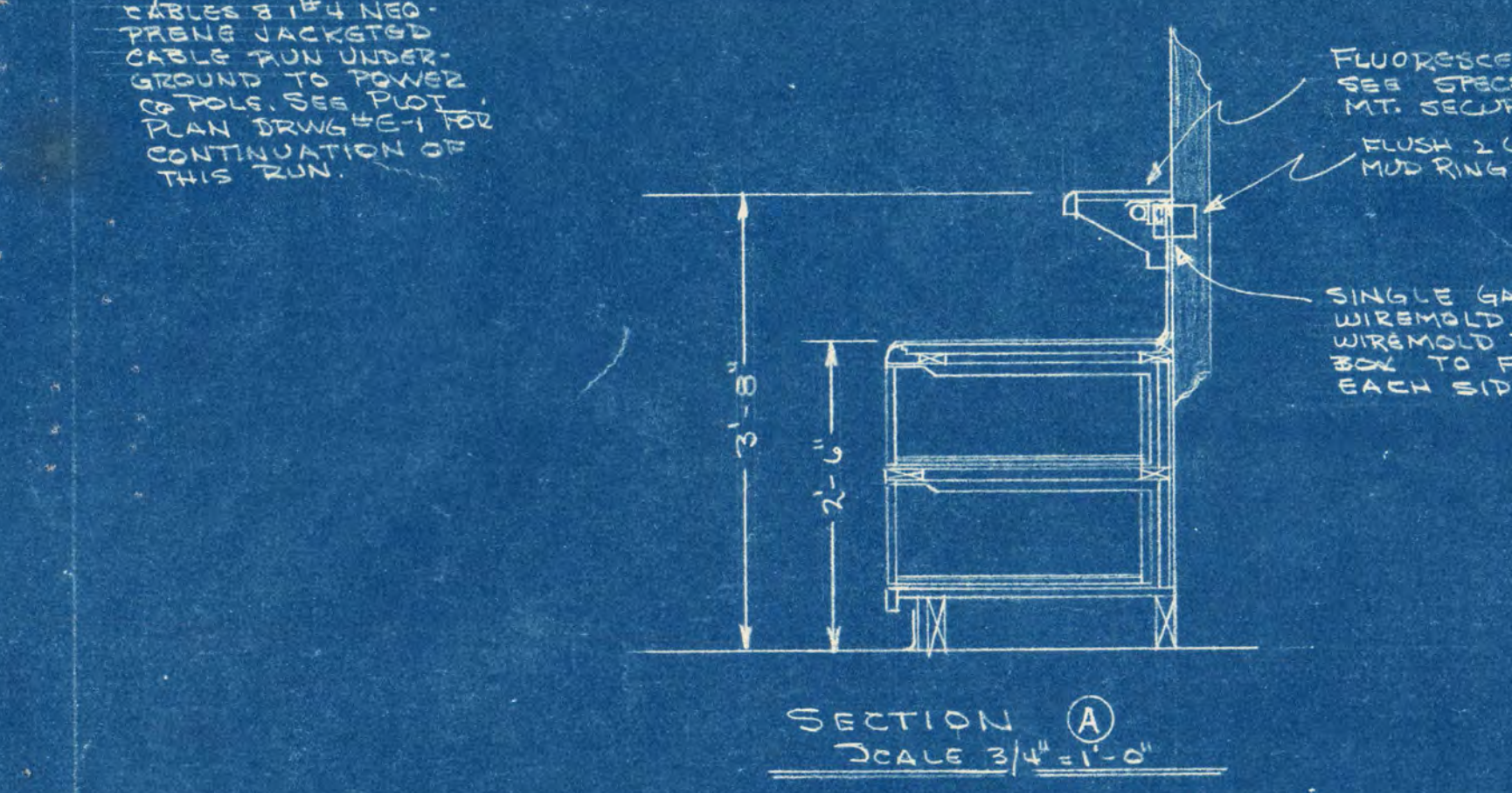
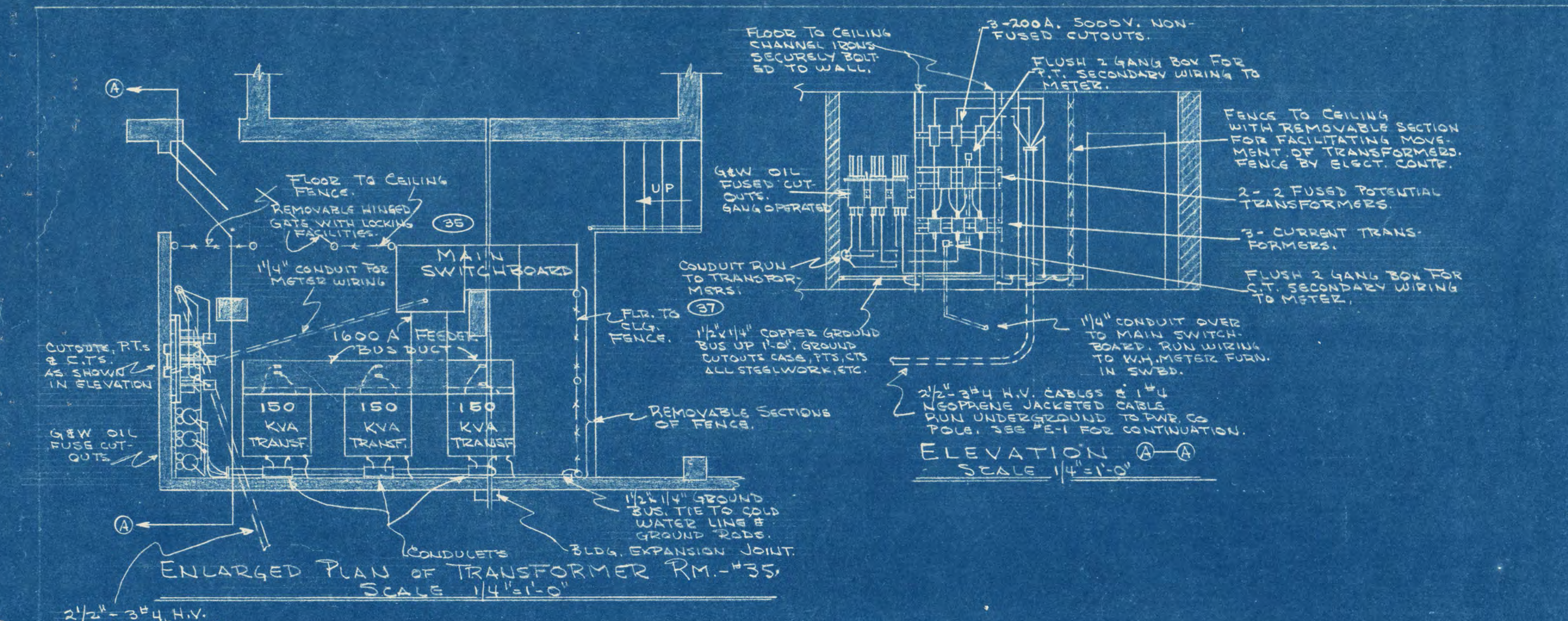
ADDITION TO SHOEMAKER HALL
ST. CLOUD STATE COLLEGE
ST. CLOUD, MINNESOTA

FRANK W. JACKSON & ASSOCIATES, INC.
ST. CLOUD, MINNESOTA

ORR, SCHEFFLE, INC.
CONSULTING ENGINEERS
MINNEAPOLIS, MINNESOTA

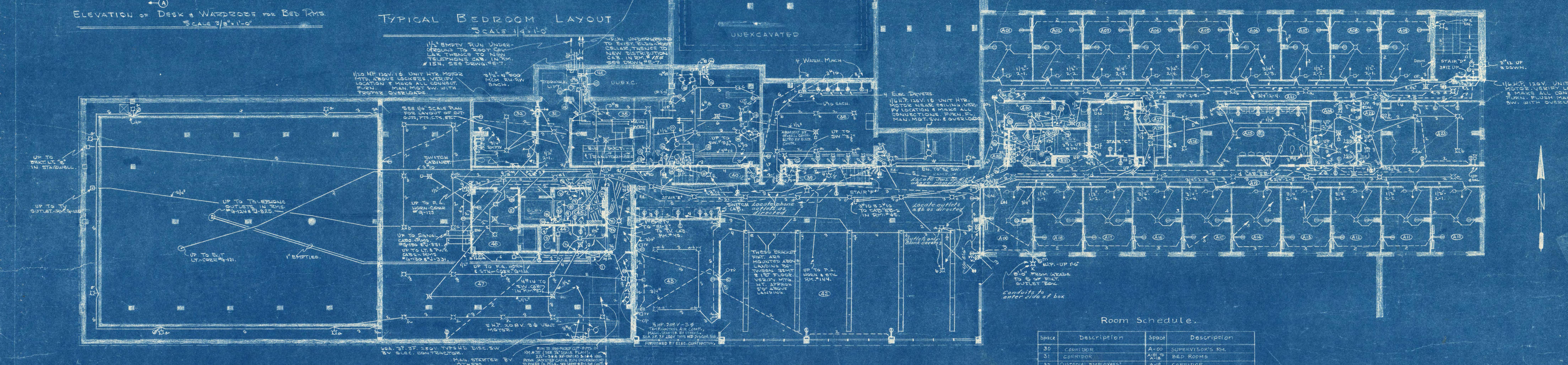
3-2-59
APPROVED BY
PREPARED BY

E-2
4
12.22.59
5-13



NOTES FOR F.A. SYSTEM

- IN THE WIRING ABOVE THE FIRST DIAGRAM REPRESENTS THE NO. OF THE WIRE, THE SECOND DIAGRAM IS THE NO. OF THE TWO WIRES.
- IN THE MANUAL STATION CODES (E.g., A-1), THE 1ST NO. IS THE CODE SIGNAL, THE 2ND NO. IS THE CODE SIGNAL, THE 3RD NO. IS THE CODE SIGNAL & THE 4TH IS THE NO. OF THAT STATION.
- SIMILARLY FOR THE AUTOMATIC STATION CODES (E.g., A-1), THE 1ST NO. IS THE ALERT SIGNAL, THE 2ND NO. IS THE CODE & THE 3RD NO. IS THE FLOOR.
- CAPITAL LETTERS BY F.A. HOOD SYMBOLS INDICATE TO WHICH ROOM CIRCUIT THE PARTICULAR SIGNAL IS CONDUCTED TO.



BASEMENT FLOOR PLAN Scale 1/4"=1'-0"

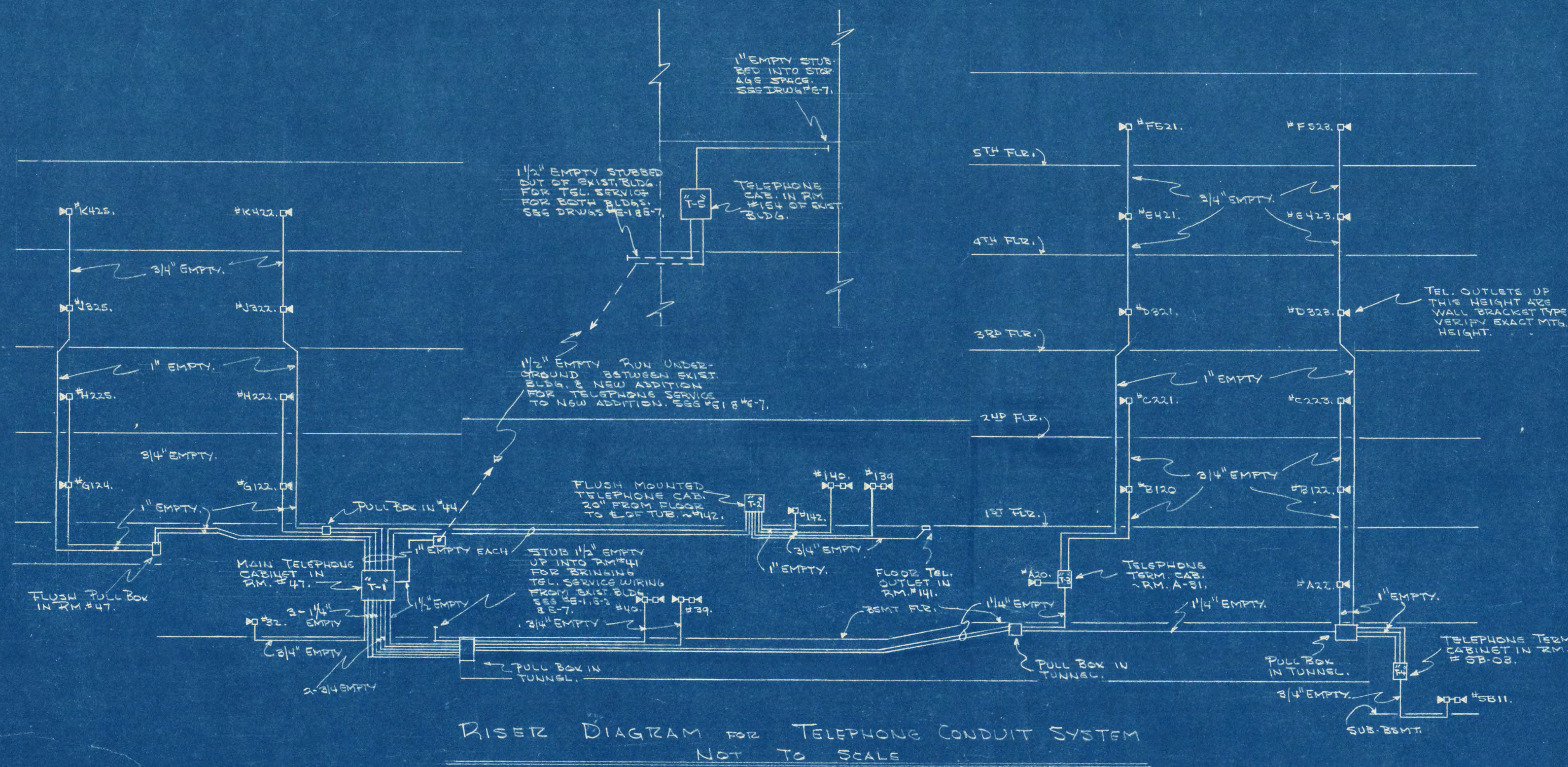
ADDITION TO SHOEMAKER HALL
ST. CLOUD STATE COLLEGE
MINNESOTA

FRANK W. JACKSON & ASSOCIATES, INC.
ST. CLOUD, MINNESOTA

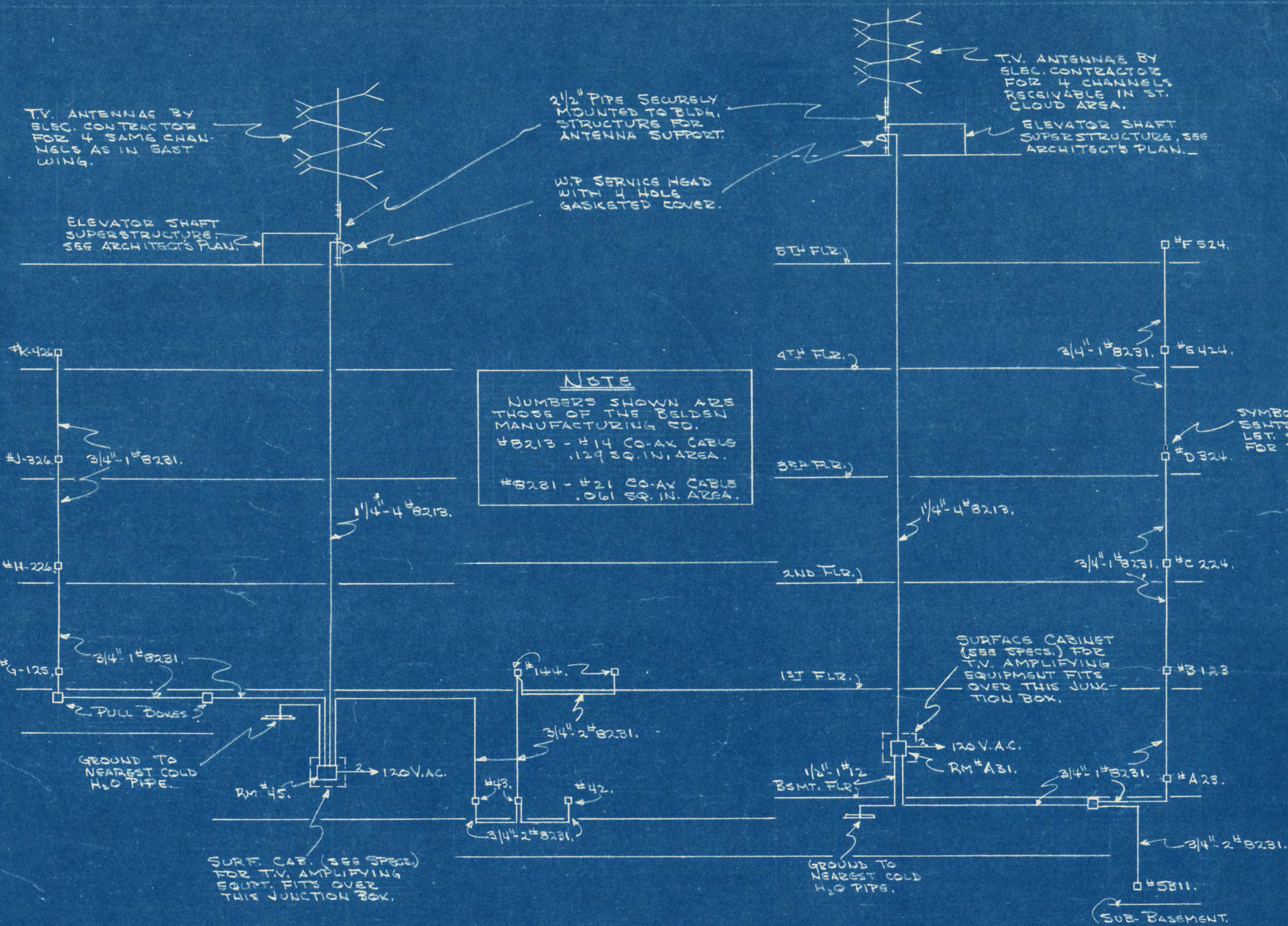
ORR - SCHELEN, INC.
CONSULTING ENGINEERS
MINNEAPOLIS, MINNESOTA

APPROVED BY
DATE

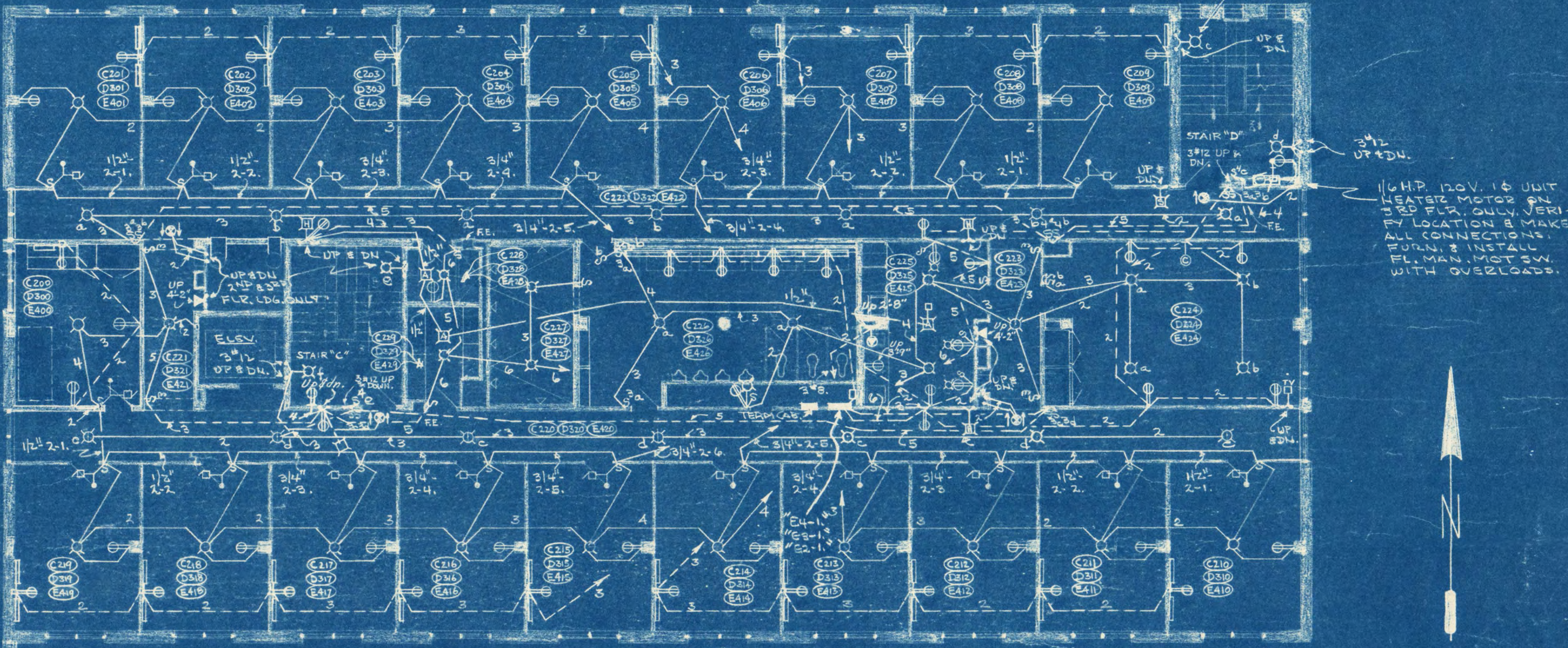
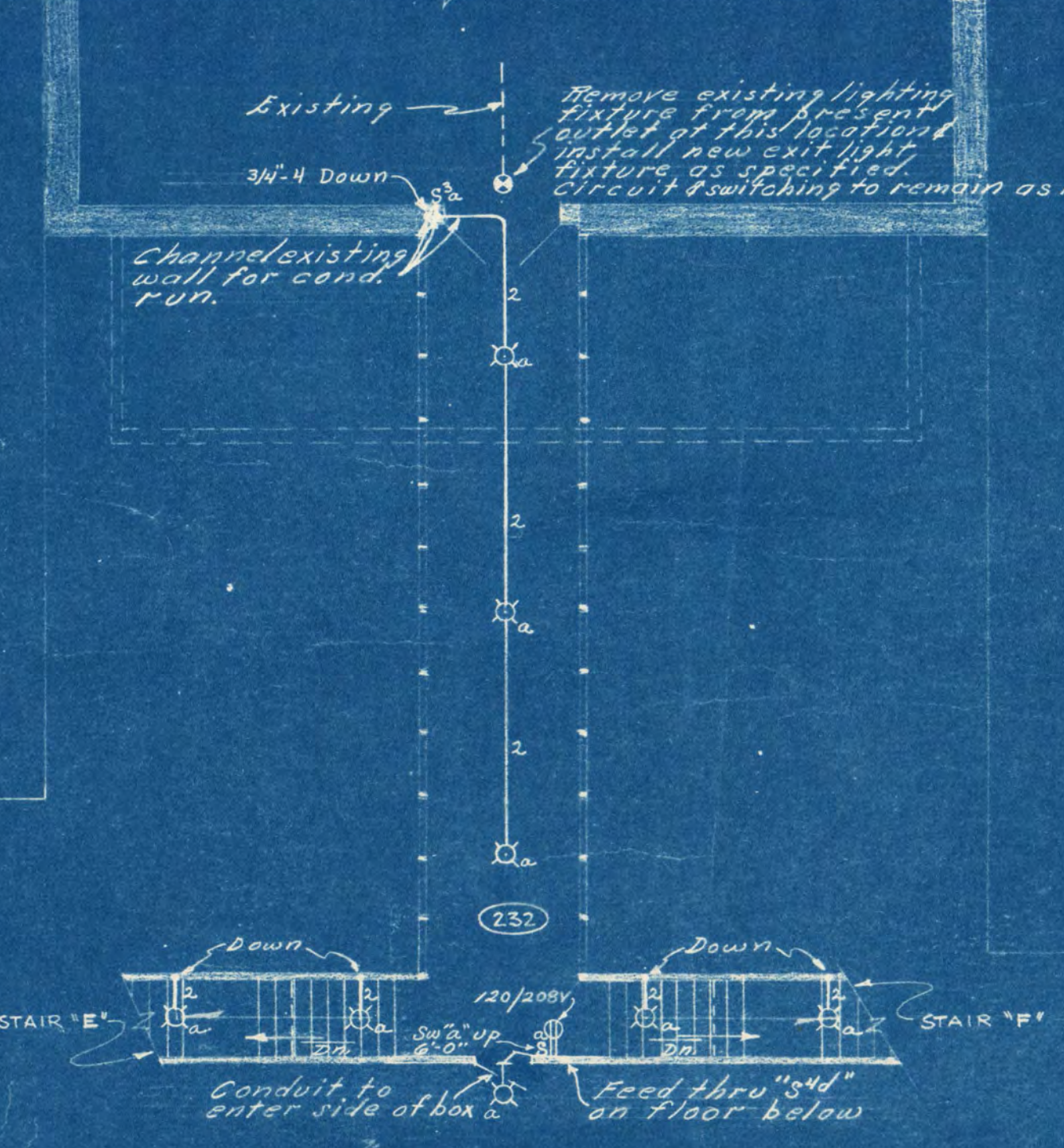
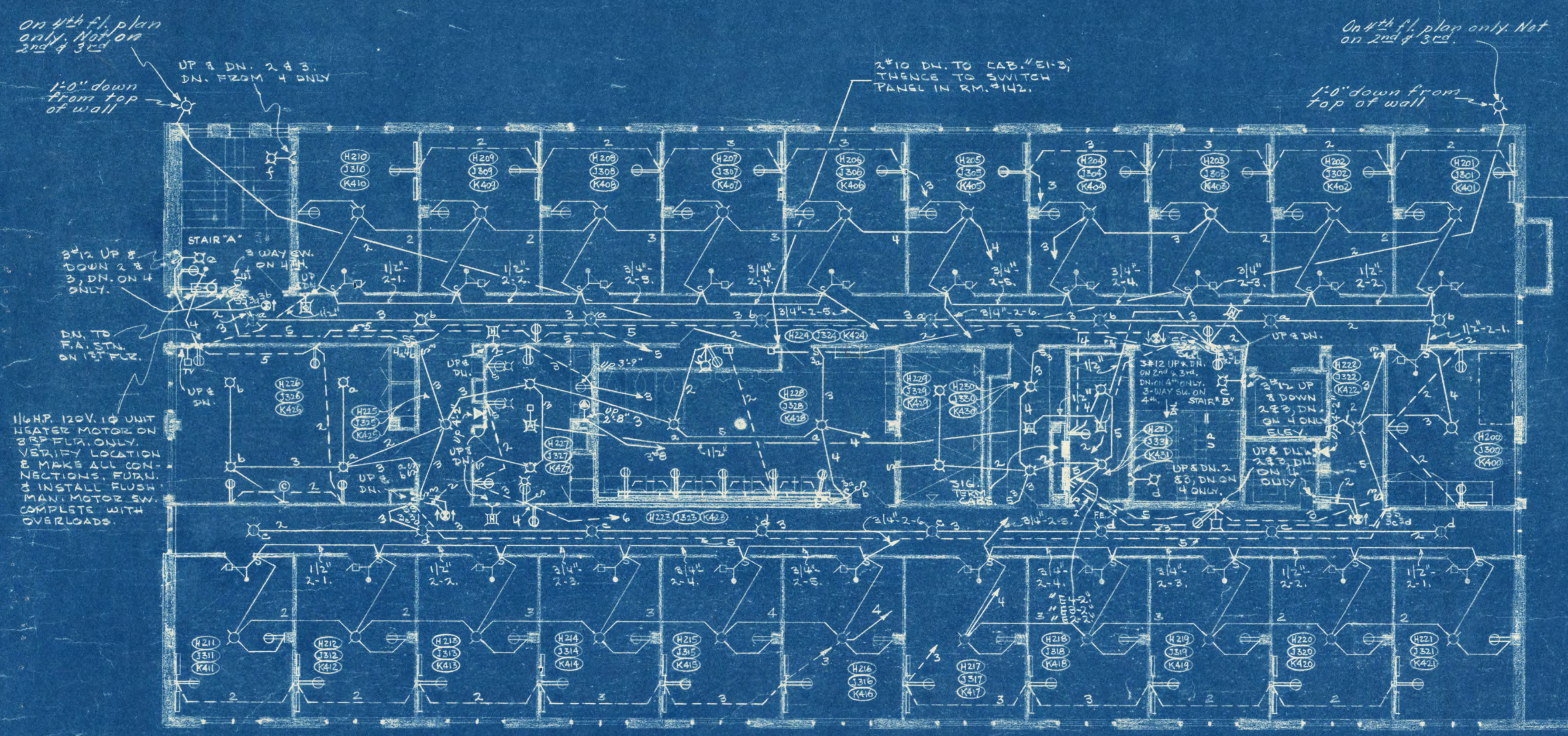
ST. CLOUD STATE COLLEGE
3-15



RISE DIAGRAM FOR TELEPHONE CONDUIT SYSTEM
NOT TO SCALE



RISE DIAGRAM FOR TV ANTENNA SYSTEM
NOT TO SCALE



Room Schedule.

WEST WING.			EAST WING.		
Space	Description	Space	Description	Space	Description
2ND FLOOR			3RD FLOOR		
H-206	SUPERVISOR'S RM.	J-388	SUPERVISOR'S RM.	K-466	SUPERVISOR'S RM.
H-207	BED ROOMS	J-389	BED ROOMS	K-467	BED ROOMS
H-208	CORRIDOR	J-390	CORRIDOR	K-468	CORRIDOR
H-209	CORRIDOR	J-391	CORRIDOR	K-469	CORRIDOR
H-210	CORRIDOR	J-392	CORRIDOR	K-470	CORRIDOR
H-211	CORRIDOR	J-393	CORRIDOR	K-471	CORRIDOR
H-212	CORRIDOR	J-394	CORRIDOR	K-472	CORRIDOR
H-213	CORRIDOR	J-395	CORRIDOR	K-473	CORRIDOR
H-214	LIVING RM.	J-396	LIVING RM.	K-474	LIVING RM.
H-215	UTILITY RM.	J-397	UTILITY RM.	K-475	UTILITY RM.
H-216	TOILET	J-398	TOILET	K-476	TOILET
H-217	SHOWER	J-399	SHOWER	K-477	SHOWER
H-218	LINEN	J-400	LINEN	K-478	LINEN
H-219	CUSTODIAL CLOSET	J-401	CUSTODIAL CLOSET	K-479	CUSTODIAL CLOSET
H-220	PASSAGE (CENTER)	J-402	STAIR 'A'	K-480	STAIR 'A'
H-221	STAIR 'A'	J-403	STAIR 'B'	K-481	STAIR 'B'
H-222	STAIR 'B'	J-404	STAIR 'C'	K-482	STAIR 'C'
H-223	STAIR 'C'	J-405	STAIR 'D'	K-483	STAIR 'D'
H-224	STAIR 'D'	J-406	STAIR 'E'	K-484	STAIR 'E'
H-225	STAIR 'E'	J-407	STAIR 'F'	K-485	STAIR 'F'
H-226	STAIR 'F'	J-408	STAIR 'G'	K-486	STAIR 'G'
H-227	STAIR 'G'	J-409	STAIR 'H'	K-487	STAIR 'H'
H-228	STAIR 'H'	J-410	STAIR 'I'	K-488	STAIR 'I'
H-229	STAIR 'I'	J-411	STAIR 'J'	K-489	STAIR 'J'
H-230	STAIR 'J'	J-412	STAIR 'K'	K-490	STAIR 'K'
H-231	STAIR 'K'	J-413	STAIR 'L'	K-491	STAIR 'L'
H-232	STAIR 'L'	J-414	STAIR 'M'	K-492	STAIR 'M'
H-233	STAIR 'M'	J-415	STAIR 'N'	K-493	STAIR 'N'
H-234	STAIR 'N'	J-416	STAIR 'O'	K-494	STAIR 'O'
H-235	STAIR 'O'	J-417	STAIR 'P'	K-495	STAIR 'P'
H-236	STAIR 'P'	J-418	STAIR 'Q'	K-496	STAIR 'Q'
H-237	STAIR 'Q'	J-419	STAIR 'R'	K-497	STAIR 'R'
H-238	STAIR 'R'	J-420	STAIR 'S'	K-498	STAIR 'S'
H-239	STAIR 'S'	J-421	STAIR 'T'	K-499	STAIR 'T'
H-240	STAIR 'T'	J-422	STAIR 'U'	K-500	STAIR 'U'
H-241	STAIR 'U'	J-423	STAIR 'V'	K-501	STAIR 'V'
H-242	STAIR 'V'	J-424	STAIR 'W'	K-502	STAIR 'W'
H-243	STAIR 'W'	J-425	STAIR 'X'	K-503	STAIR 'X'
H-244	STAIR 'X'	J-426	STAIR 'Y'	K-504	STAIR 'Y'
H-245	STAIR 'Y'	J-427	STAIR 'Z'	K-505	STAIR 'Z'

2ND, 3RD & 4TH FLOOR PLANS
Scale 1/8" = 1'-0"

ADDITION TO SHOEMAKER HALL
ST. CLOUD STATE COLLEGE
ST. CLOUD, MINNESOTA

FRANK W. JACKSON & ASSOCIATES, INC.
CONSULTING ENGINEERS
MINNEAPOLIS, MINNESOTA

ORR & SCHELEN, INC.
CONSULTING ENGINEERS
MINNEAPOLIS, MINNESOTA

3-2-59

APPROVED BY: _____

DATE: _____

ST. CLOUD
B-1B