

**CLASSROOM BUILDING**  
**FOR ST. CLOUD STATE COLLEGE**  
 DEPARTMENT OF ADMINISTRATION STATE OF MINNESOTA  
 STATE CAPITOL BUILDING ST. PAUL, MINNESOTA  
 ARCHITECTURAL AND ENGINEERING DIVISION

FEDERAL PROJECT MINN. 4-2983

TRAYNOR AND HERMANSON ARCHITECTS  
 ST. CLOUD, MINNESOTA  
 STRUCTURAL ENGINEERS - JOHNSTON & SAHLMAN MINNEAPOLIS  
 CONSULTING ENGINEERS - ORR, SCHELEN, MAYERON & ASSOCIATES INC. MINNEAPOLIS

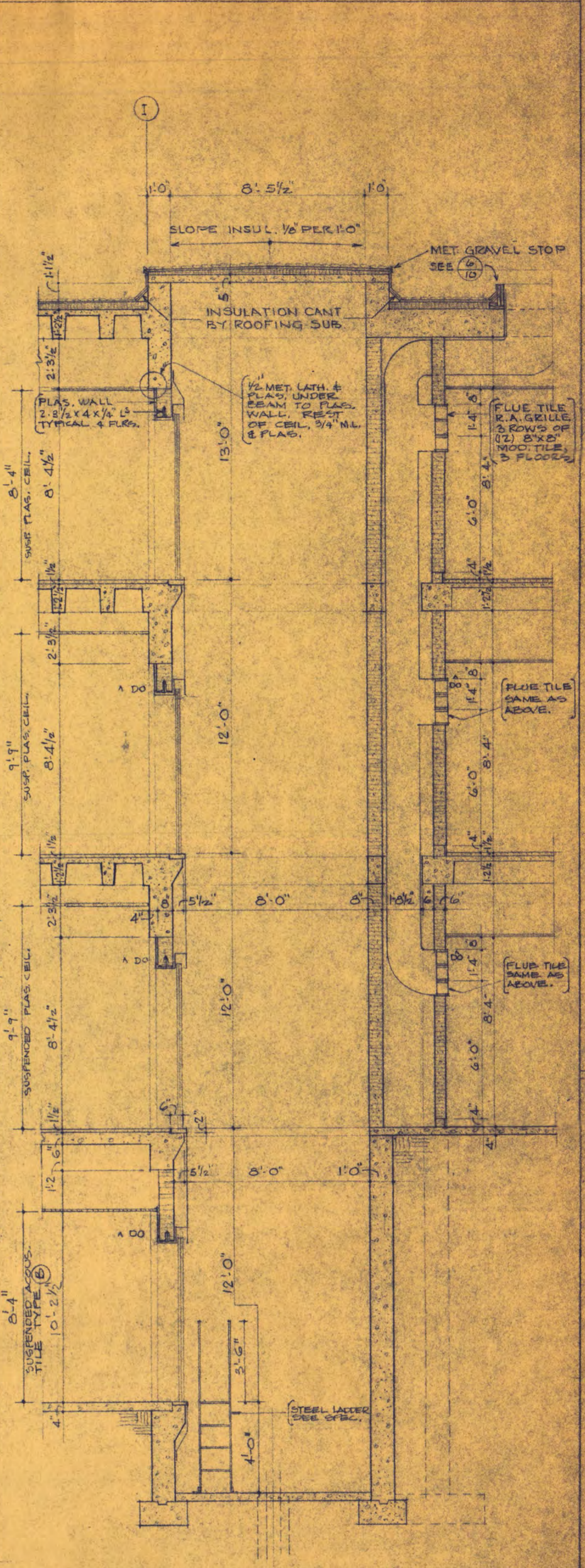
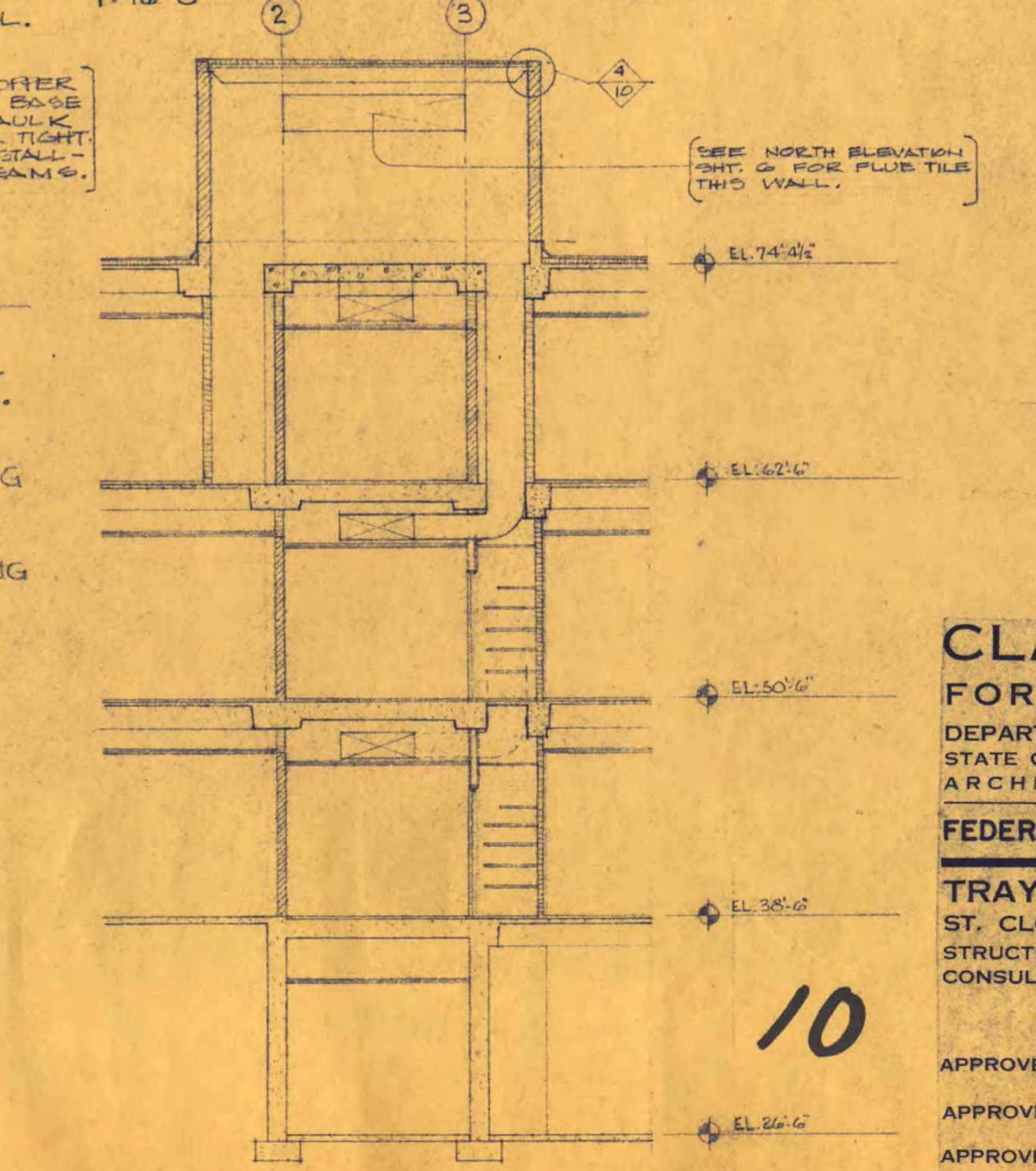
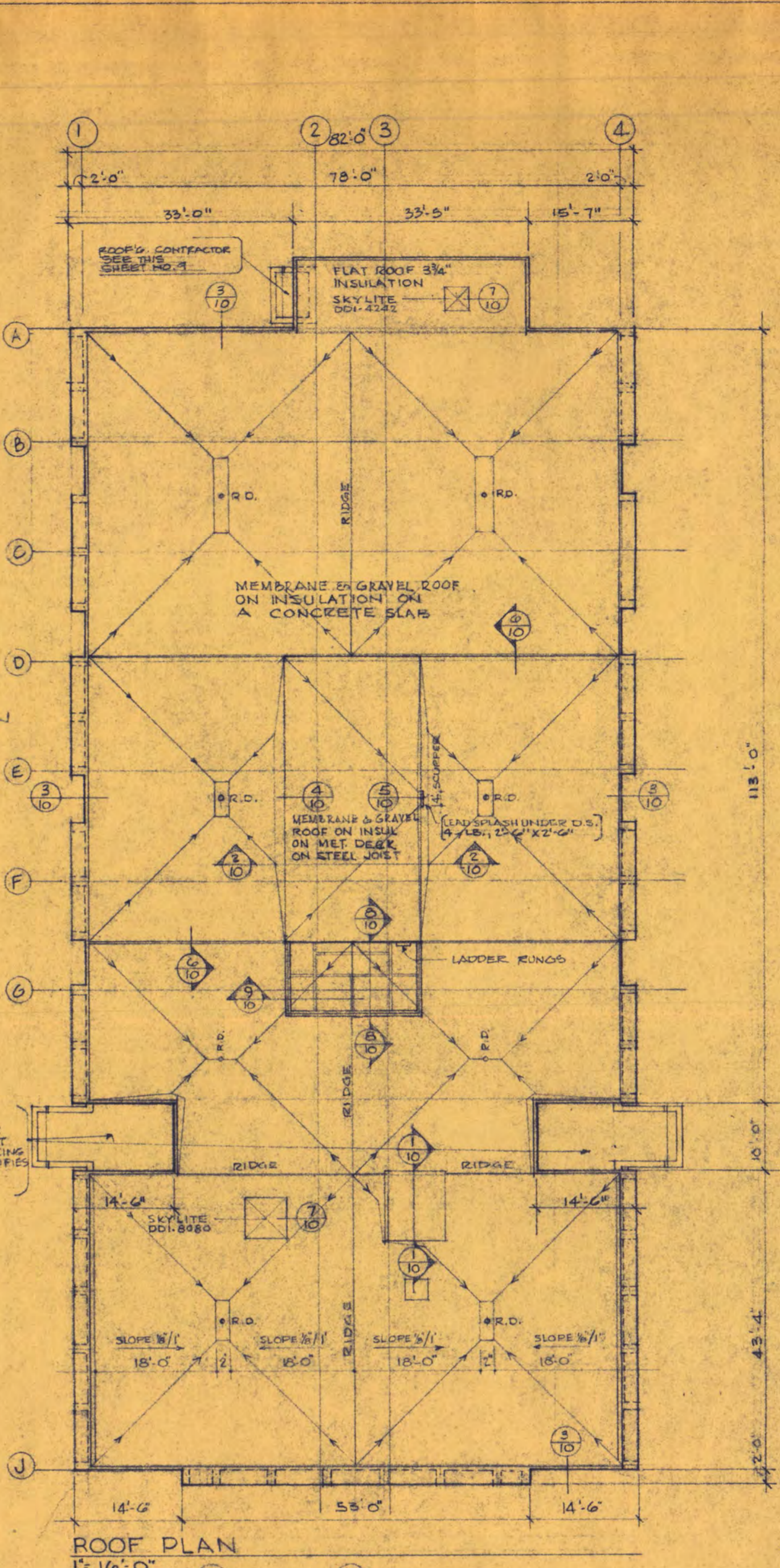
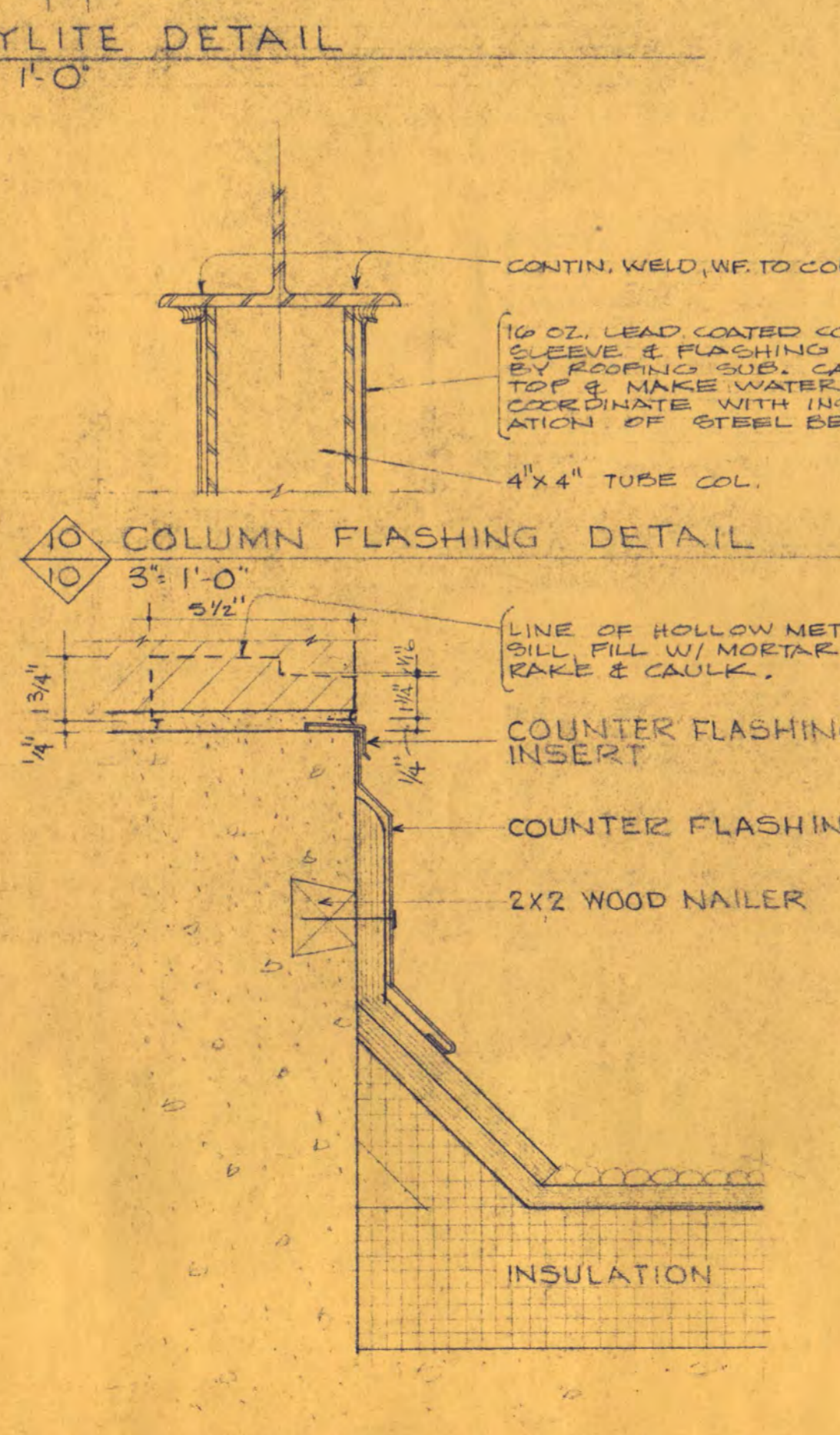
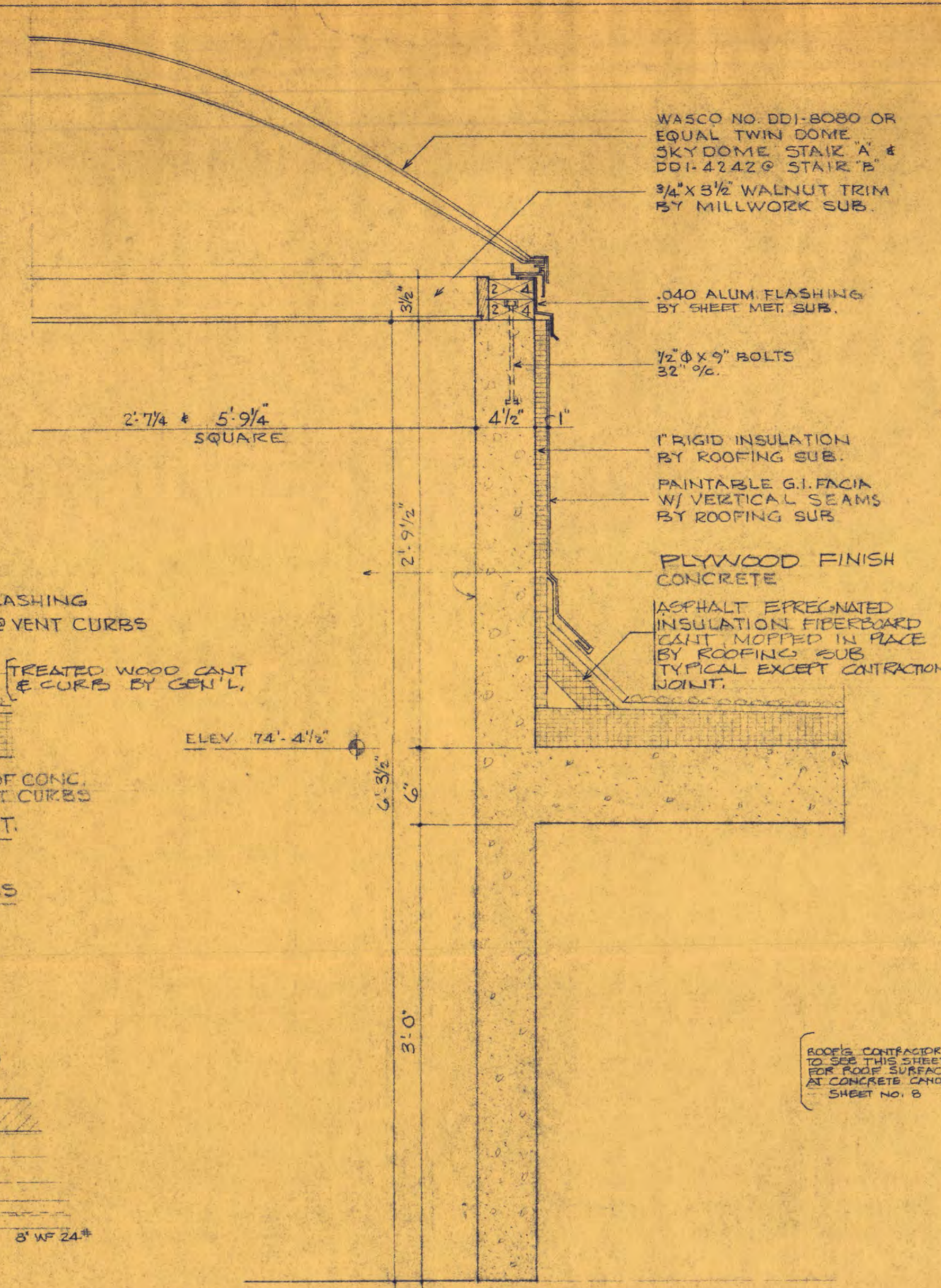
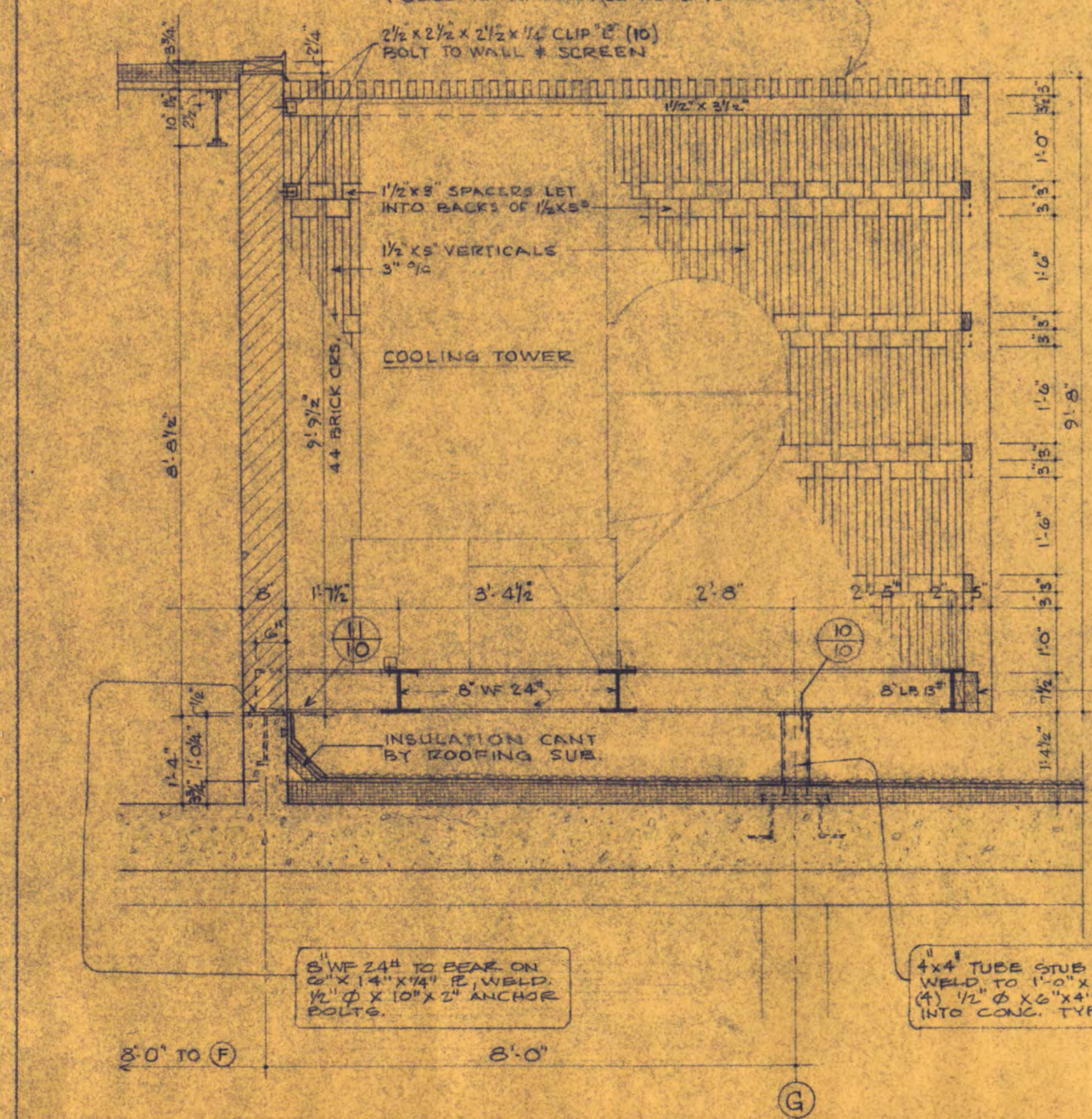
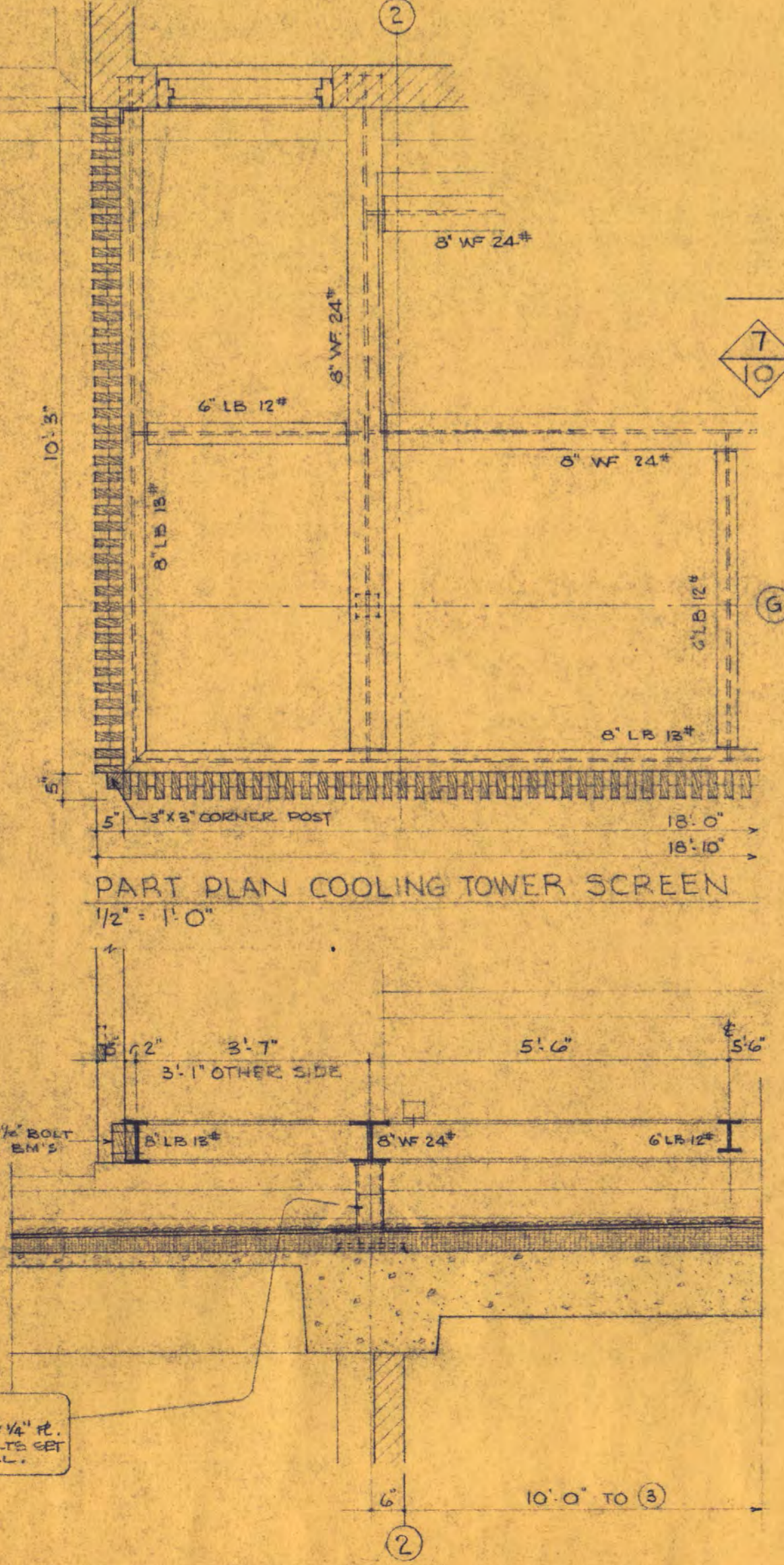
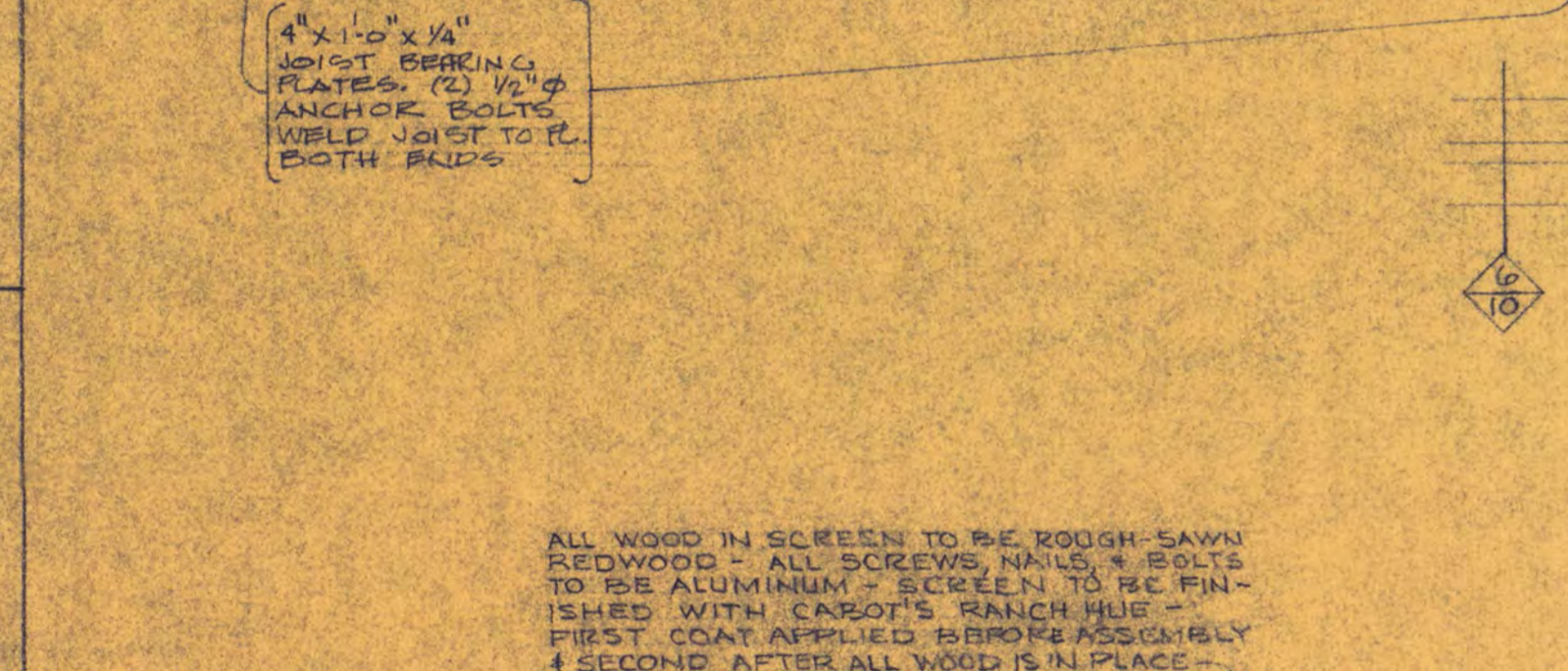
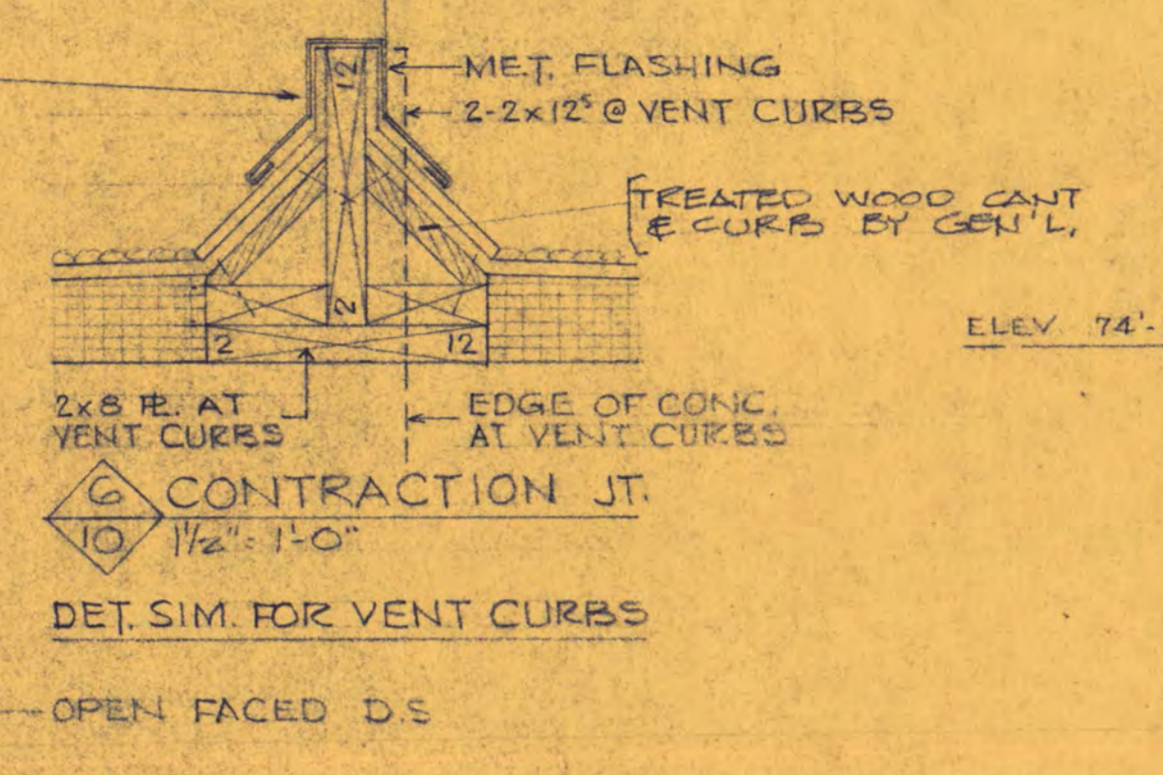
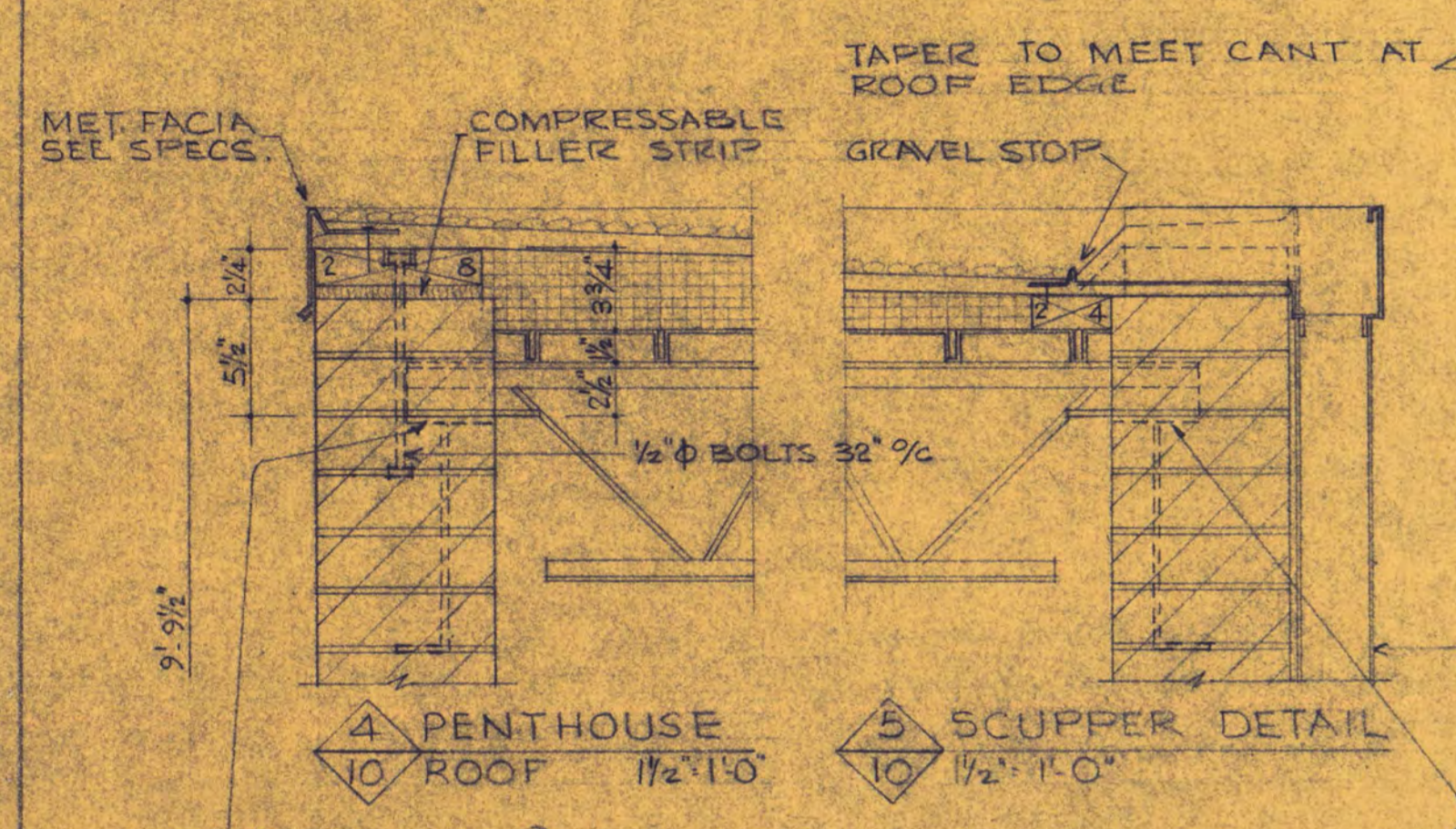
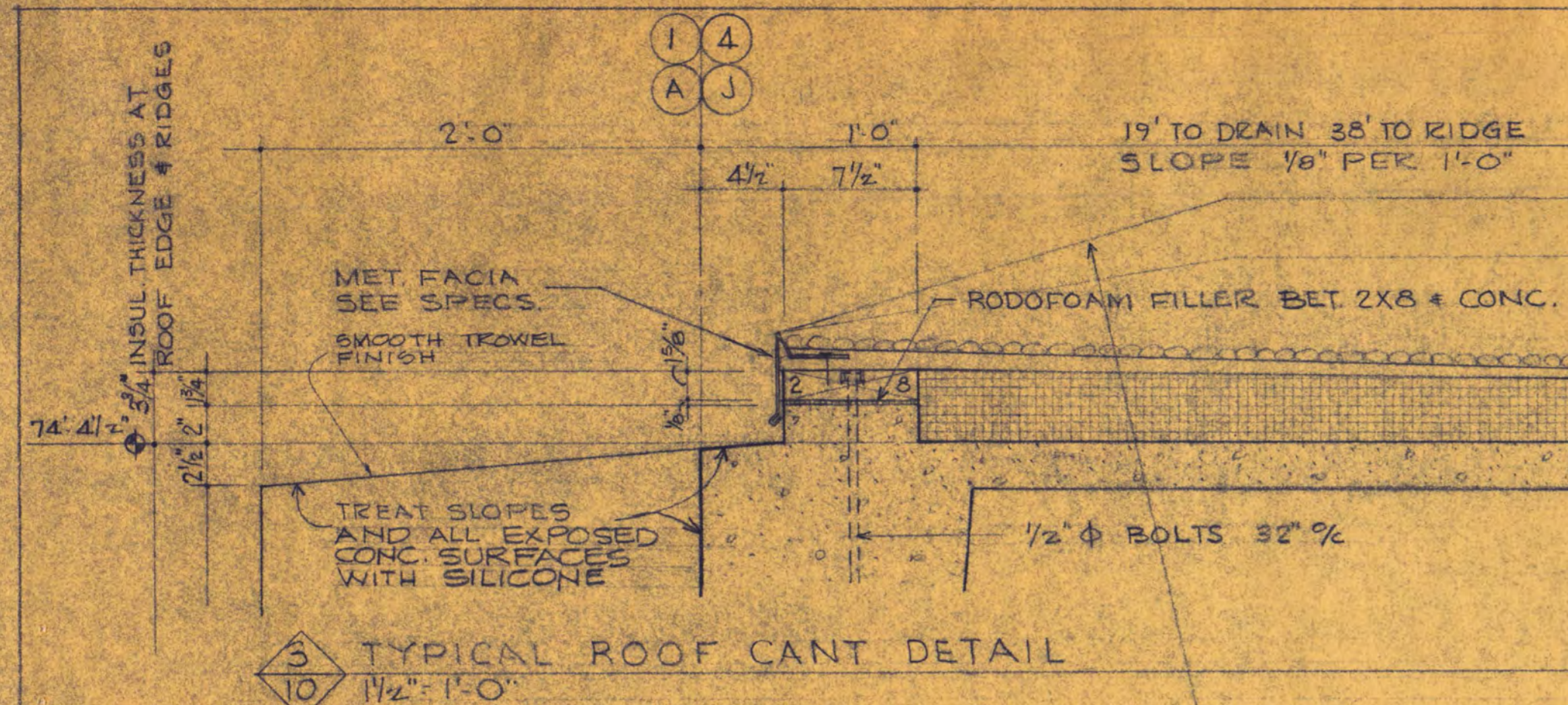
APPROVED BY \_\_\_\_\_ DATE: 5/15/67  
 STATE COLLEGE  
 APPROVED BY \_\_\_\_\_ DRAWN BY: KAS  
 STATE COLLEGE BOARD  
 APPROVED BY \_\_\_\_\_ CHECKED: \_\_\_\_\_  
 COMMISSIONER OF ADMINISTRATION  
 AN AUTHORIZED SIGNATURE

**BUILDING SECTIONS & STAIR DETAILS**

DEPARTMENT OF ADMINISTRATION  
 MASTER BUILDING NUMBER  
**43**

SHEET NO.  
**9**

OF 14  
 PROJECT NO.  
 STATE OF MINNESOTA  
**6360090**



**CLASSROOM BUILDING**  
FOR ST. CLOUD STATE COLLEGE  
DEPARTMENT OF ADMINISTRATION STATE OF MINNESOTA  
STATE CAPITOL BUILDING ST. PAUL, MINNESOTA  
ARCHITECTURAL AND ENGINEERING DIVISION

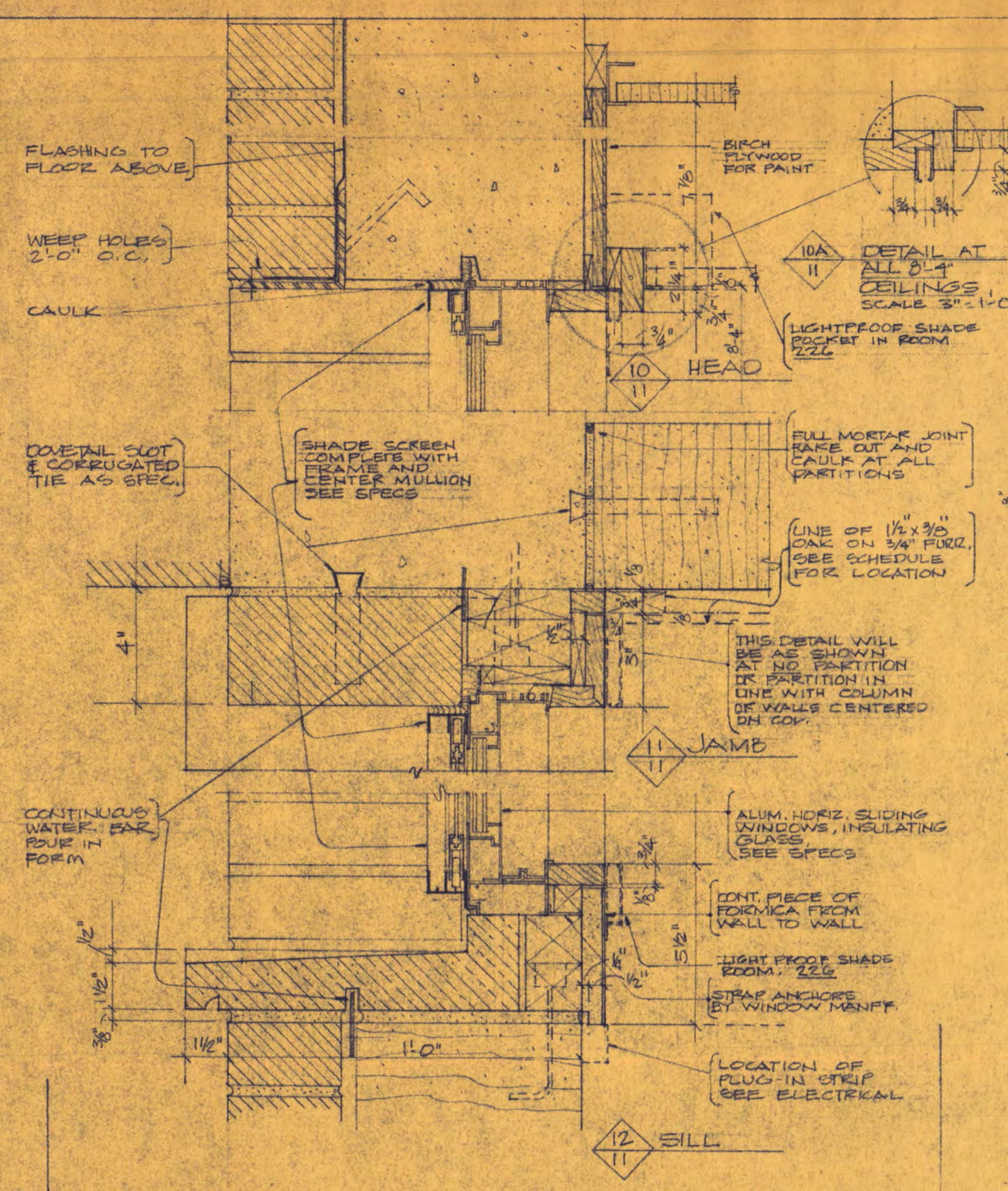
FEDERAL PROJECT MINN. 4-2983

TRAYNOR and HERMANSON ARCHITECTS  
ST. CLOUD, MINNESOTA  
STRUCTURAL ENGINEERS - JOHNSTON & SAHLMAN MINNEAPOLIS  
CONSULTING ENGINEERS - ORR, SCHELEN, MAYERON & ASSOCIATES INC. MINNEAPOLIS

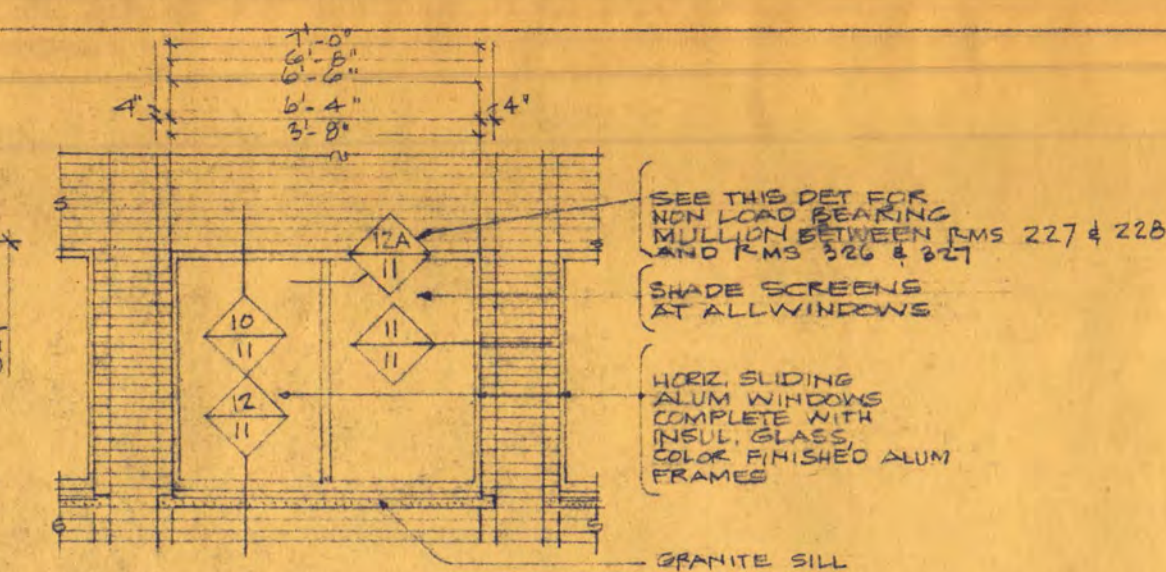
APPROVED BY: PRESIDENT OF ST. CLOUD STATE COLLEGE DATE: 5/15/67  
APPROVED BY: STATE COLLEGE BOARD DRAWN BY: KAS LWW EP  
APPROVED BY: COMMISSIONER OF ADMINISTRATION AN AUTHORIZED SIGNATURE CHECKED:

43 SHEET NO. 10 OF 14 PROJECT NO. STATE OF MINNESOTA 6360090

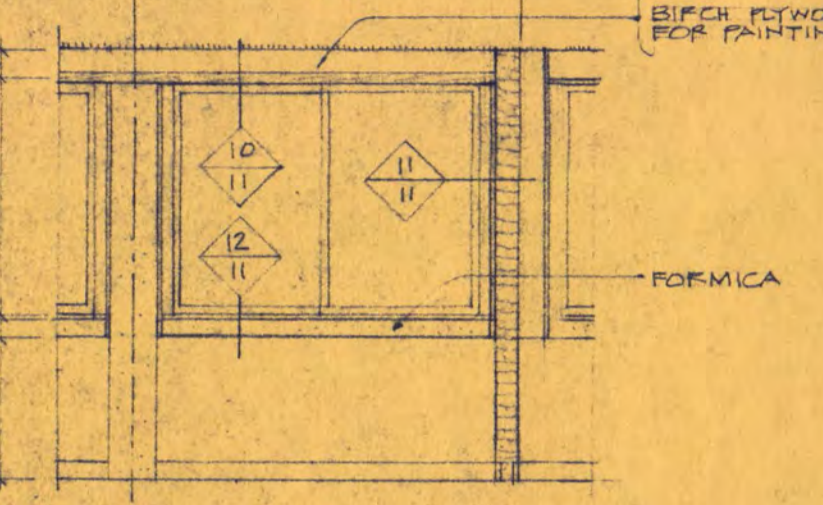
**ROOF PLAN - DETAILS**  
**ELEVATOR SECTION**



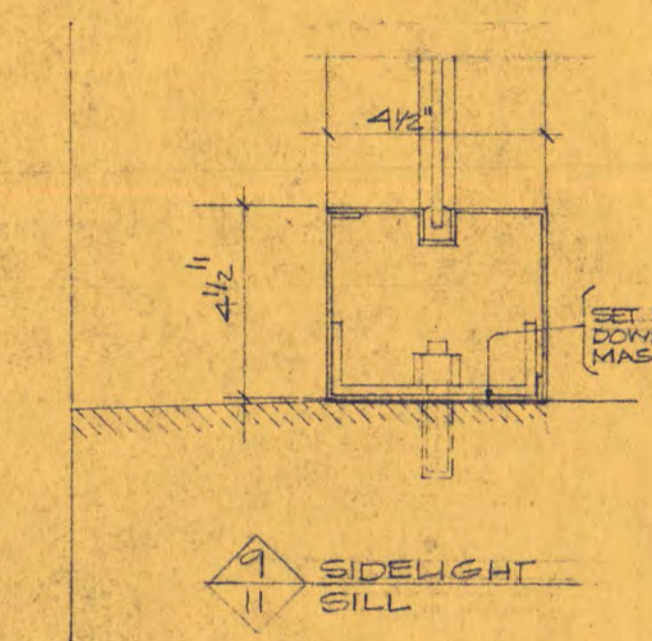
DETAILS - ALUM. HORIZ. SLIDING WINDOWS SCALE 3" = 1'-0"



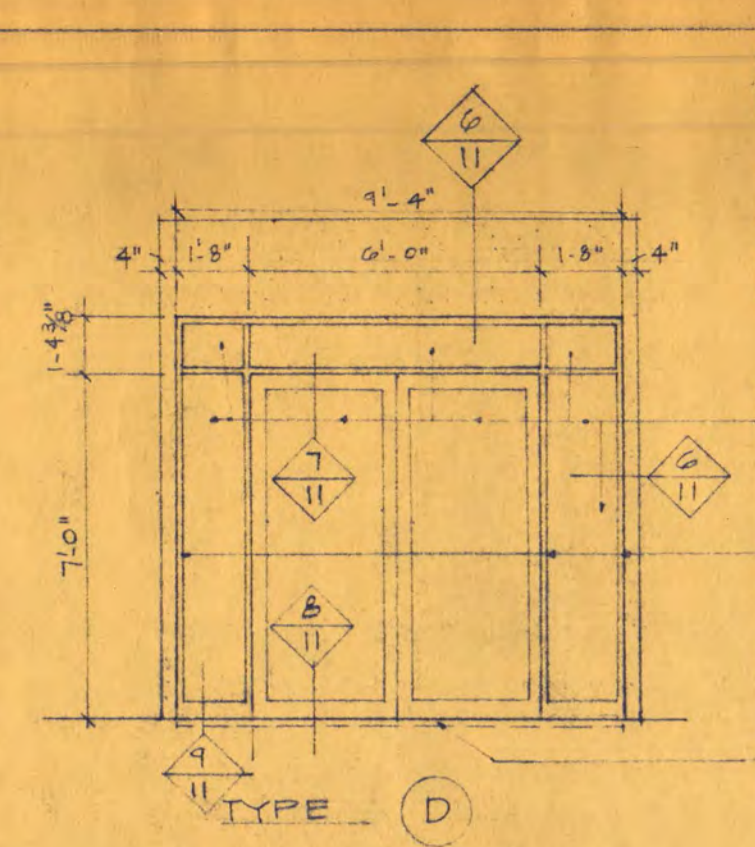
ELEVATION OF TYPICAL EXTERIOR WINDOW SCALE 1/4" = 1'-0"



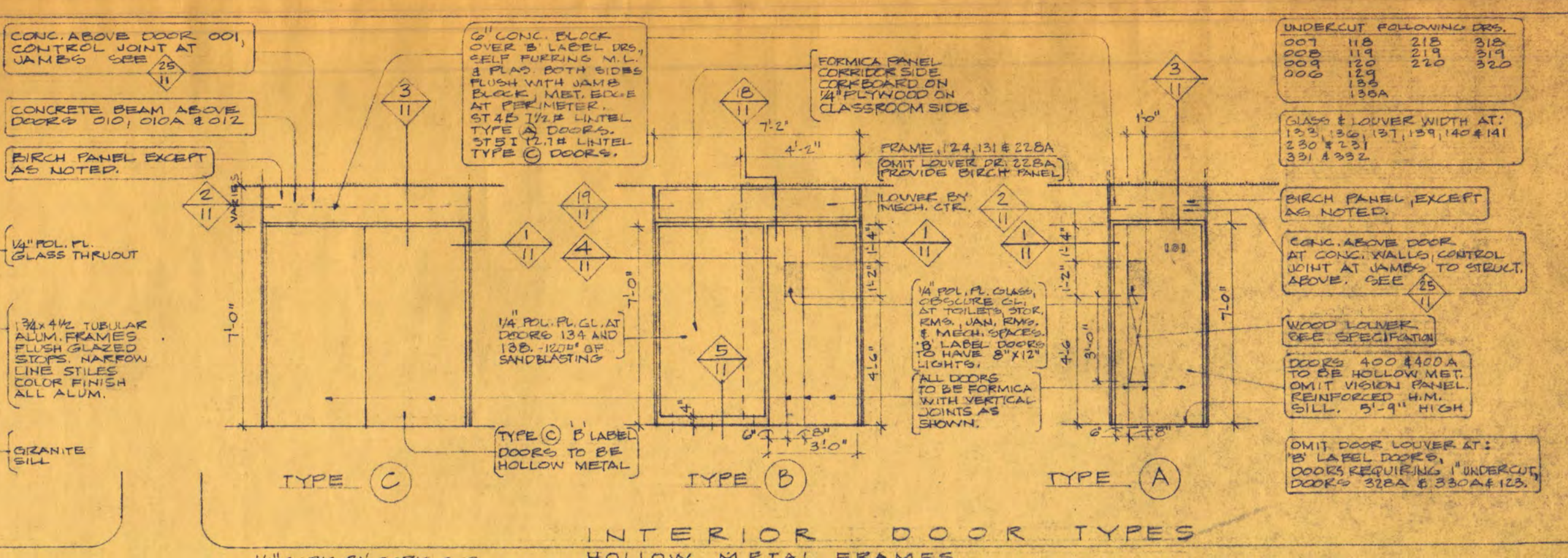
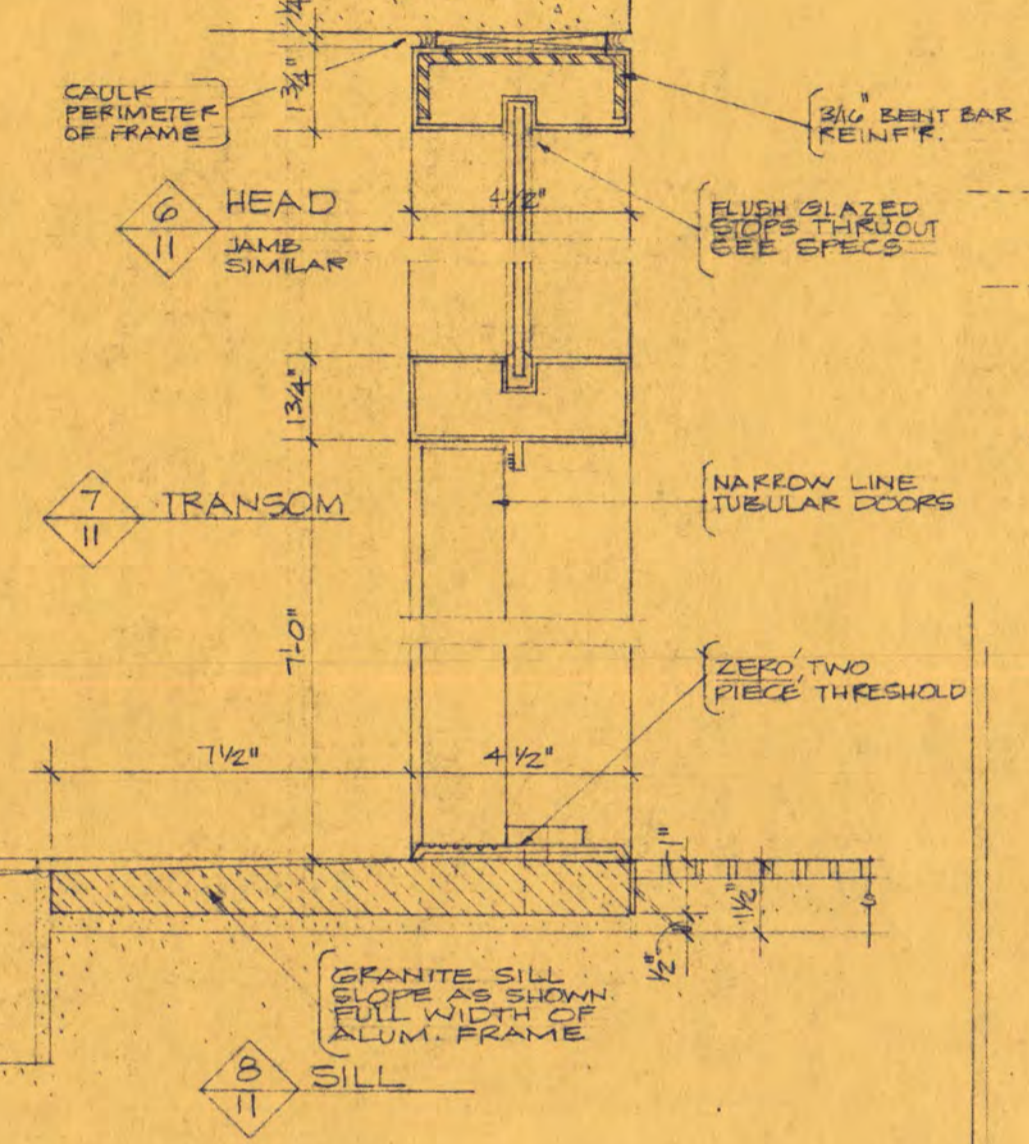
INTERIOR OF TYPICAL WINDOW SCALE 1/4" = 1'-0"



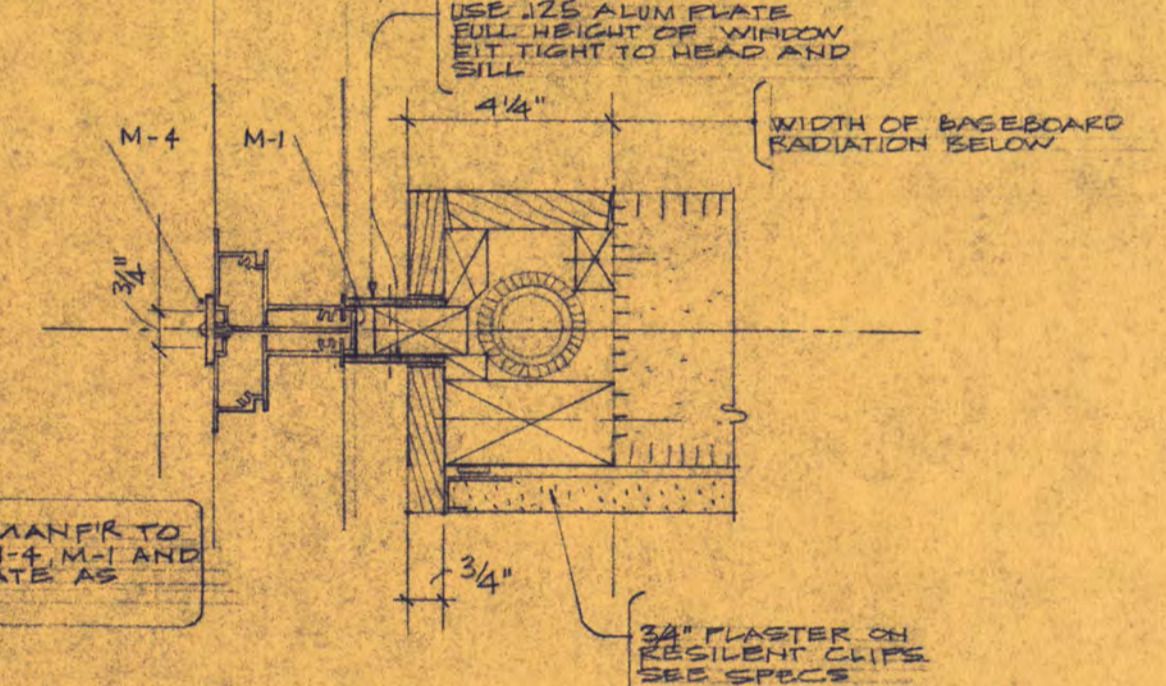
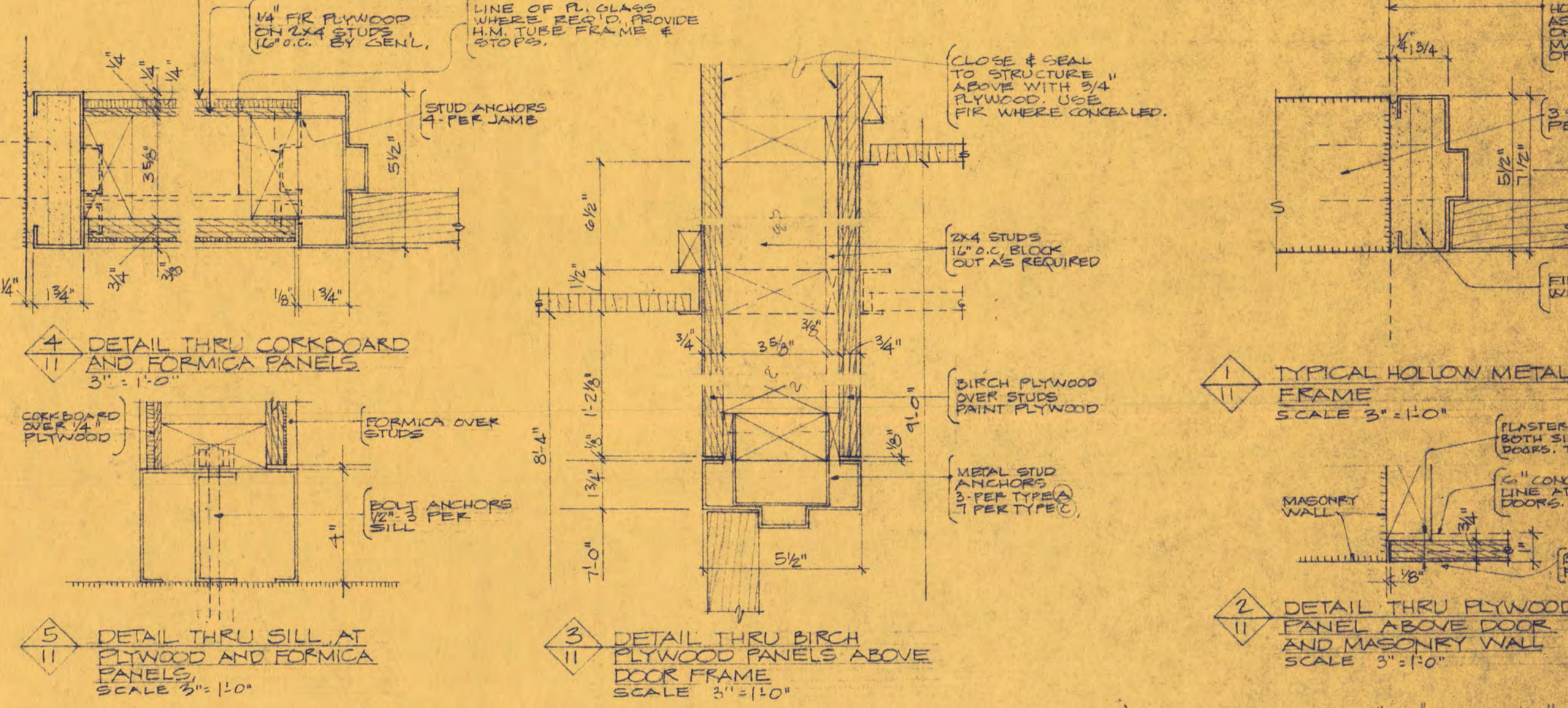
SIDE LIGHT SILL



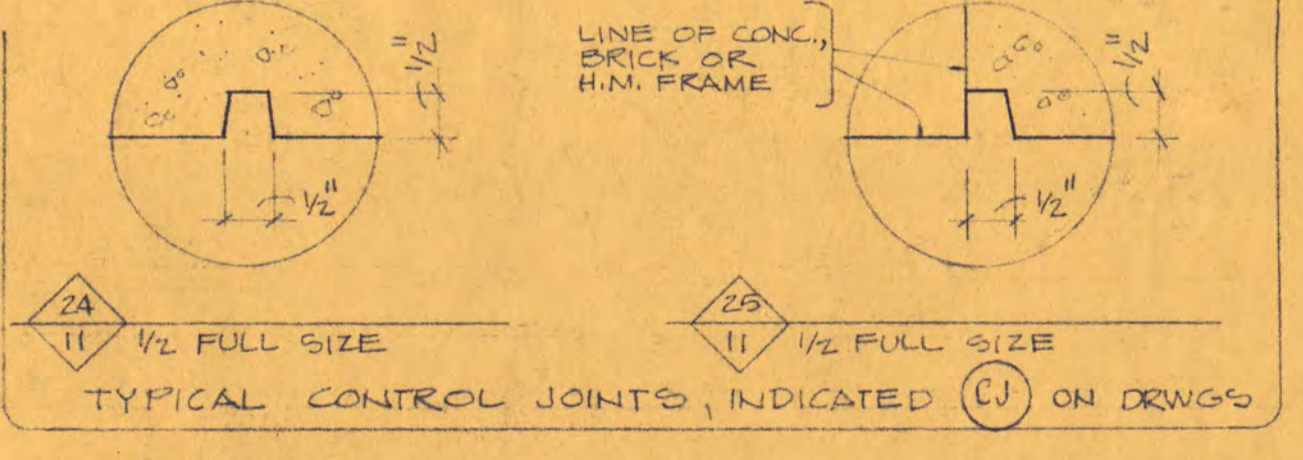
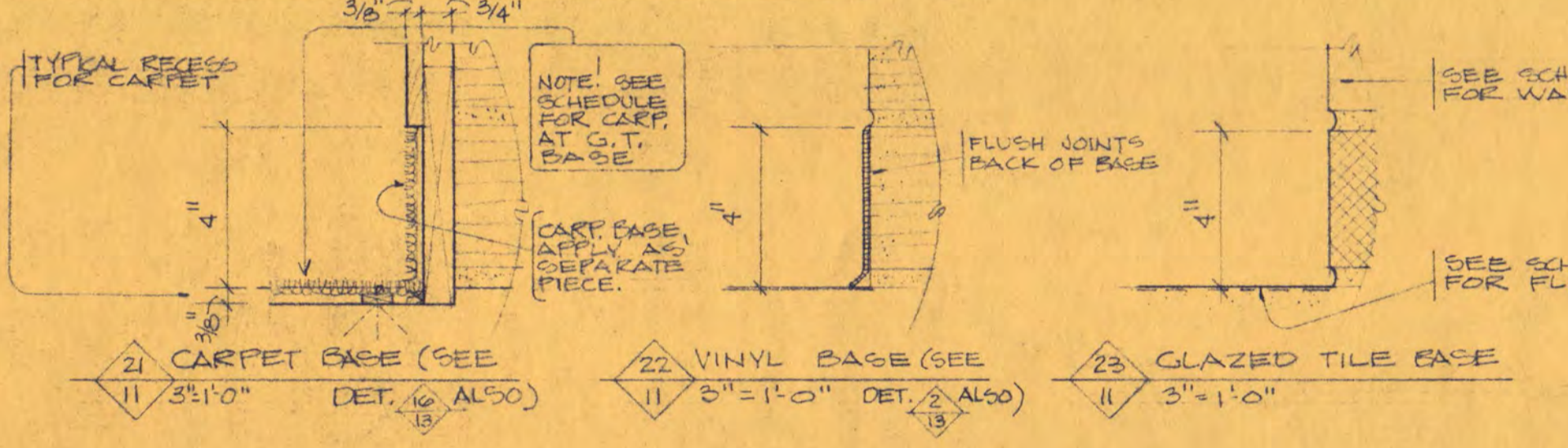
EXTERIOR DOOR TYPES ALUMINUM TUBULAR FRAMES AND DOORS



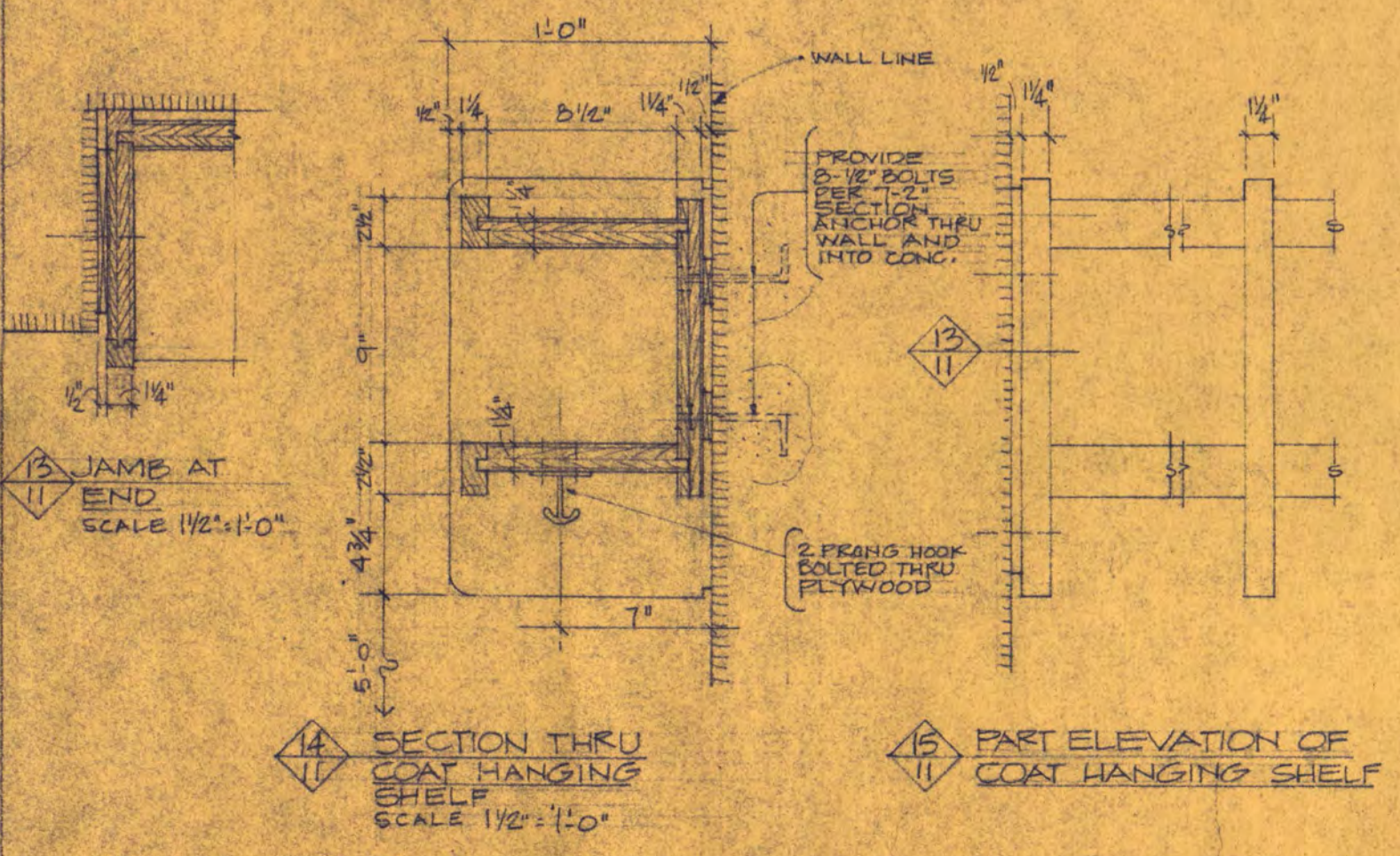
INTERIOR DOOR TYPES HOLLOW METAL FRAMES



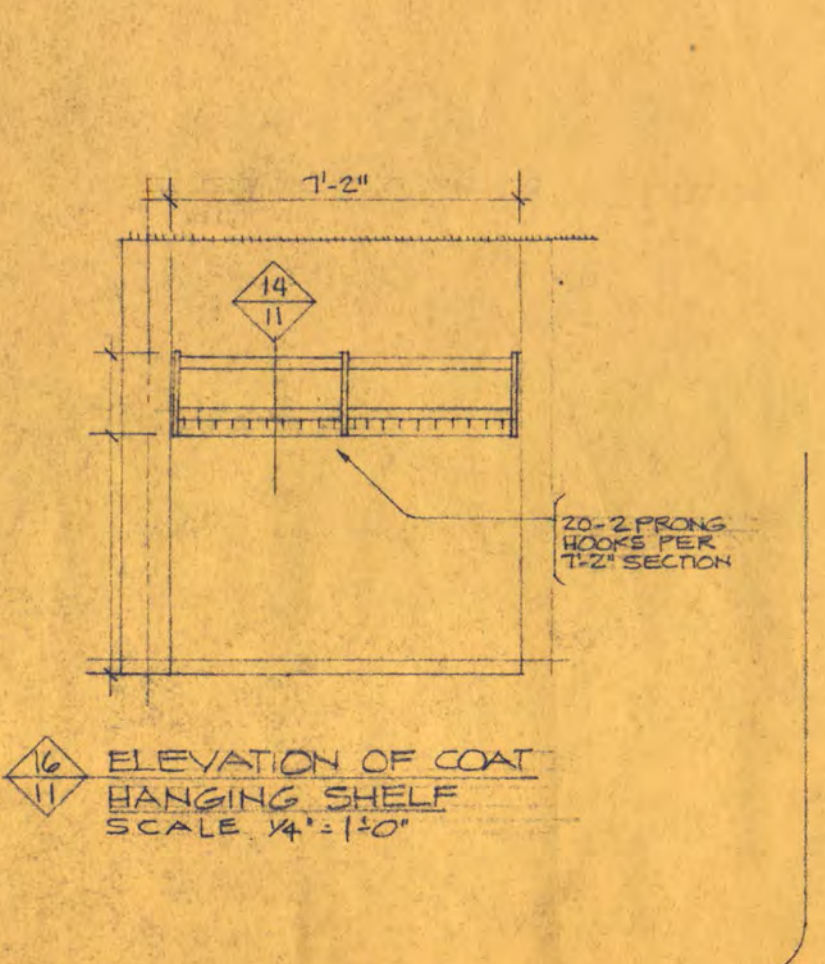
DETAIL AT WINDOW (NON LOAD BEARING MULLION) AND 6" BLOCK PARTITION SCALE 3" = 1'-0"



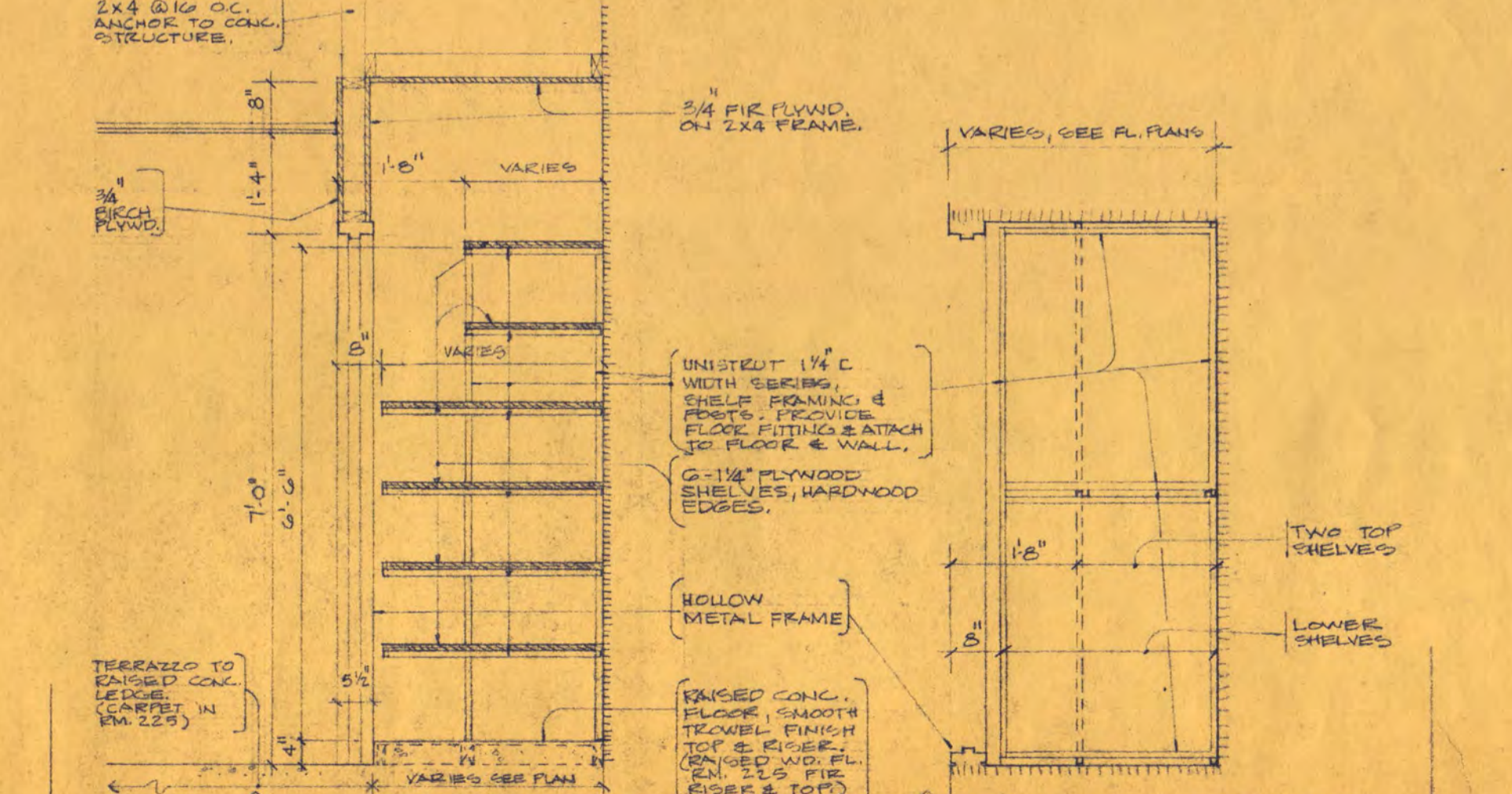
TYPICAL CONTROL JOINTS, INDICATED (C) ON DRG'S



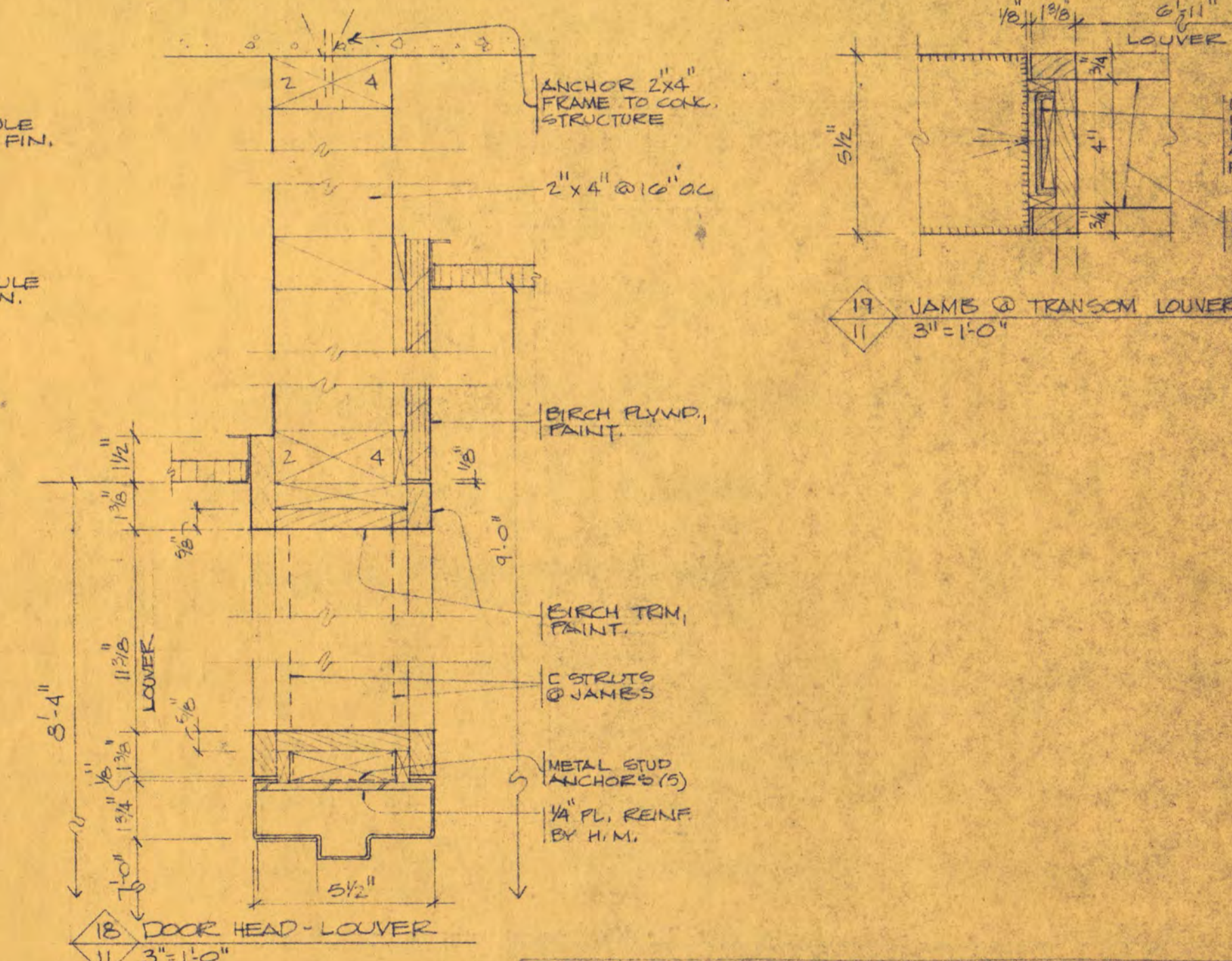
SECTION THRU COAT HANGING SHELF SCALE 1/2" = 1'-0"



ELEVATION OF COAT HANGING SHELF SCALE 1/4" = 1'-0"



SECTION THRU CORRIDOR WALL STORAGE SCALE 1/2" = 1'-0"



DOOR HEAD-LOUVER SCALE 3" = 1'-0"

**CLASSROOM BUILDING**  
FOR ST. CLOUD STATE COLLEGE  
DEPARTMENT OF ADMINISTRATION STATE OF MINNESOTA  
STATE CAPITOL BUILDING ST. PAUL, MINNESOTA  
ARCHITECTURAL AND ENGINEERING DIVISION

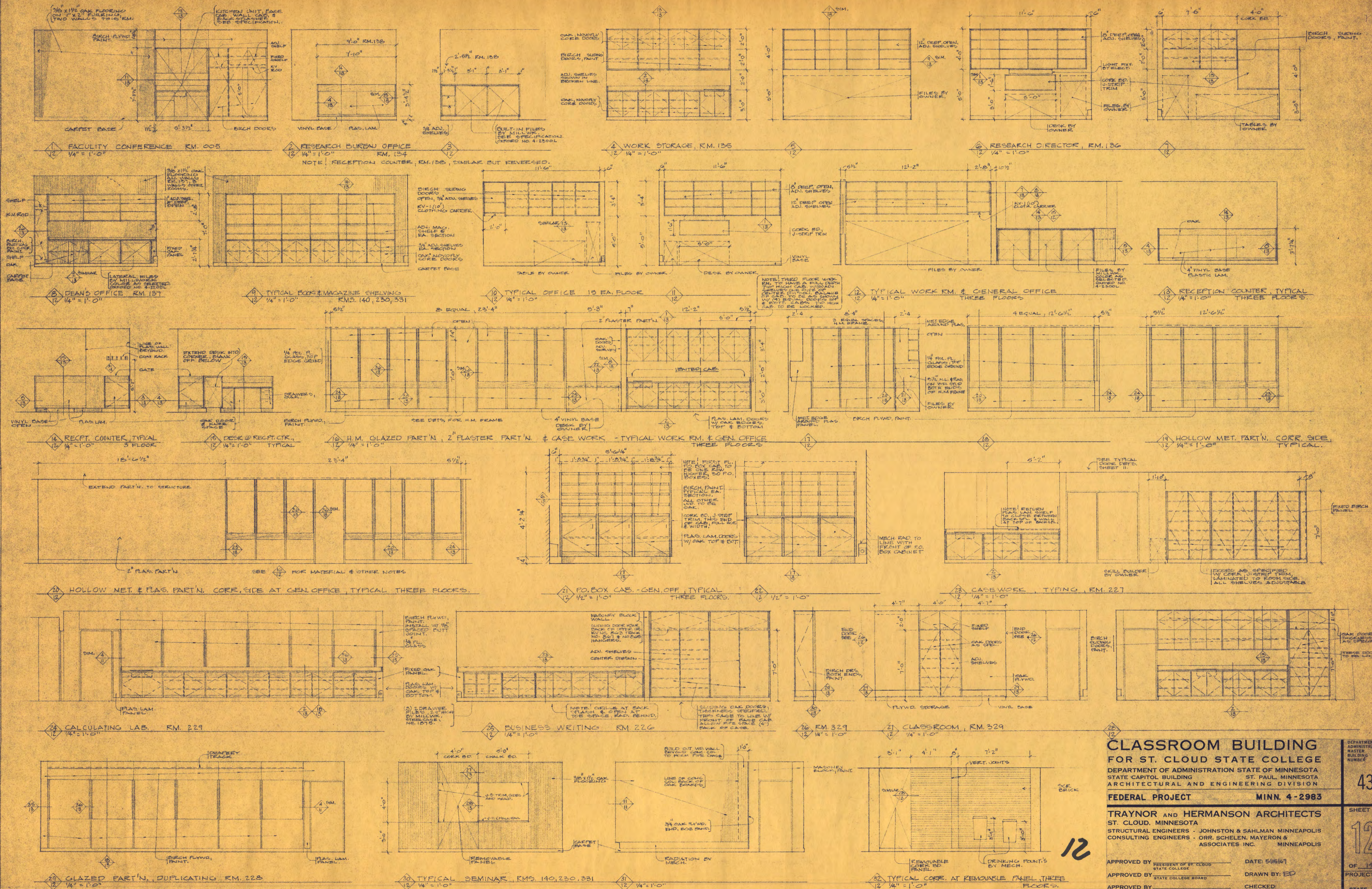
FEDERAL PROJECT MINN. 4-2983

TRAYNOR AND HERMANSON ARCHITECTS  
ST. CLOUD, MINNESOTA  
STRUCTURAL ENGINEERS - JOHNSTON & SAHLMAN MINNEAPOLIS  
CONSULTING ENGINEERS - ORR, SCHELEN, MAYERON & ASSOCIATES INC. MINNEAPOLIS

APPROVED BY: PRESIDENT OF ST. CLOUD STATE COLLEGE  
DATE: 5/15/47  
APPROVED BY: STATE COLLEGE BOARD  
DRAWN BY: KAS, ED  
APPROVED BY: COMMISSIONER OF ADMINISTRATION  
CHECKED:

DETAILS - DOOR TYPES - WINDOW DETAILS

DEPARTMENT OF ADMINISTRATION  
MASTER BUILDING NUMBER  
43  
SHEET NO.  
11  
OF 14  
PROJECT NO.  
STATE OF MINNESOTA  
6360090



**CLASSROOM BUILDING**  
**FOR ST. CLOUD STATE COLLEGE**  
 DEPARTMENT OF ADMINISTRATION STATE OF MINNESOTA  
 STATE CAPITOL BUILDING ST. PAUL, MINNESOTA  
 ARCHITECTURAL AND ENGINEERING DIVISION

FEDERAL PROJECT MINN. 4-2983

TRAYNOR and HERMANSON ARCHITECTS  
 ST. CLOUD, MINNESOTA  
 STRUCTURAL ENGINEERS - JOHNSTON & SAHLMAN MINNEAPOLIS  
 CONSULTING ENGINEERS - ORR, SCHELEN, MAYERSON & ASSOCIATES INC. MINNEAPOLIS

APPROVED BY: PRESIDENT OF ST. CLOUD STATE COLLEGE  
 APPROVED BY: STATE COLLEGE BOARD  
 APPROVED BY: COMMISSIONER OF ADMINISTRATION AN AUTHORIZED SIGNATURE

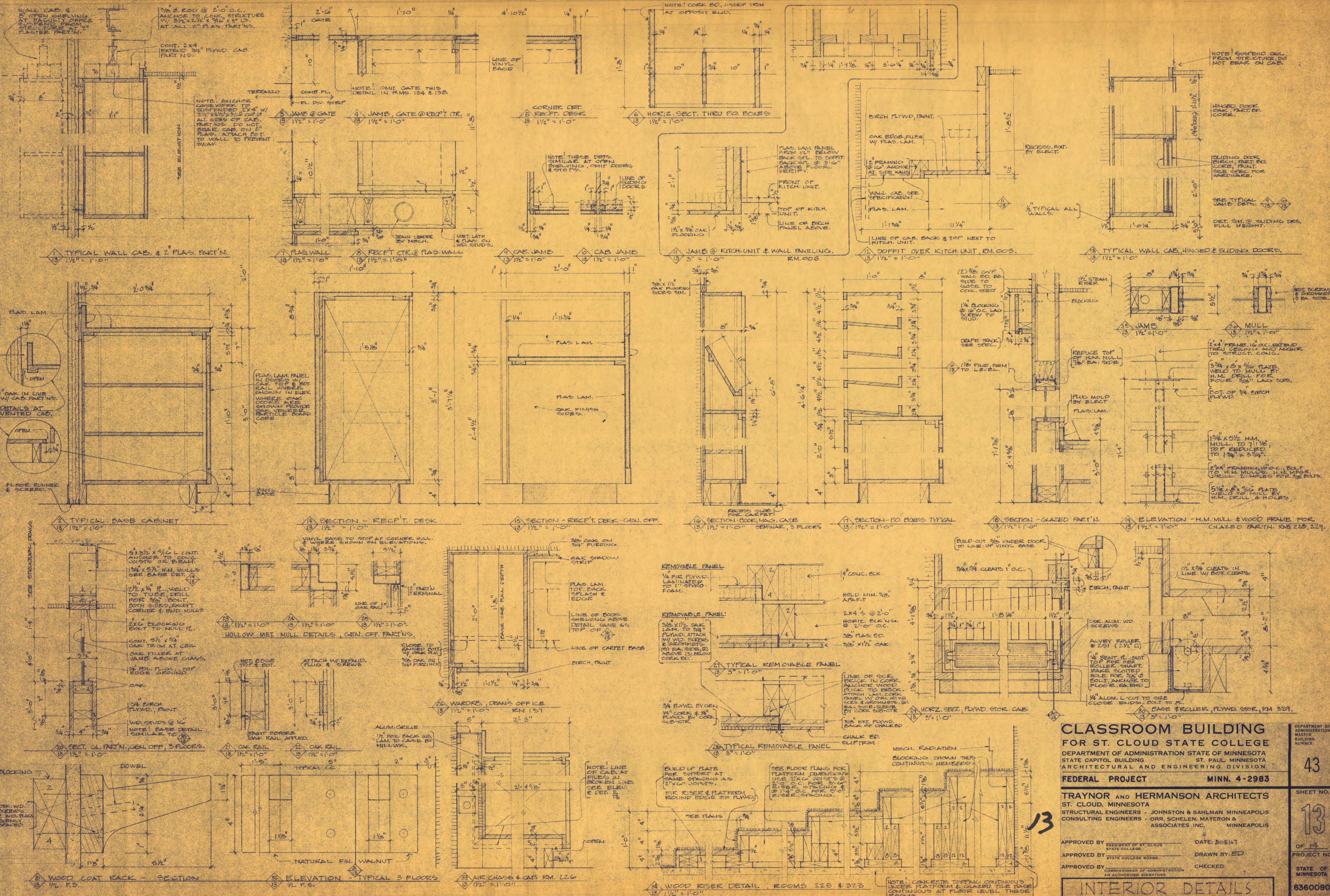
DATE: 5/15/47  
 DRAWN BY: ED  
 CHECKED:

DEPARTMENT OF ADMINISTRATION  
 BUILDING NUMBER  
 43

SHEET NO.  
 12

OF 17  
 PROJECT NO.  
 STATE OF MINNESOTA  
 6360090

INTERIOR ELEVATIONS



**CLASSROOM BUILDING**  
**FOR ST. CLOUD STATE COLLEGE**  
 DEPARTMENT OF ADMINISTRATION STATE OF MINNESOTA  
 STATE CAPITOL BUILDING ST. PAUL, MINNESOTA  
 ARCHITECTURAL AND ENGINEERING DIVISION

FEDERAL PROJECT MINN. 4-2983

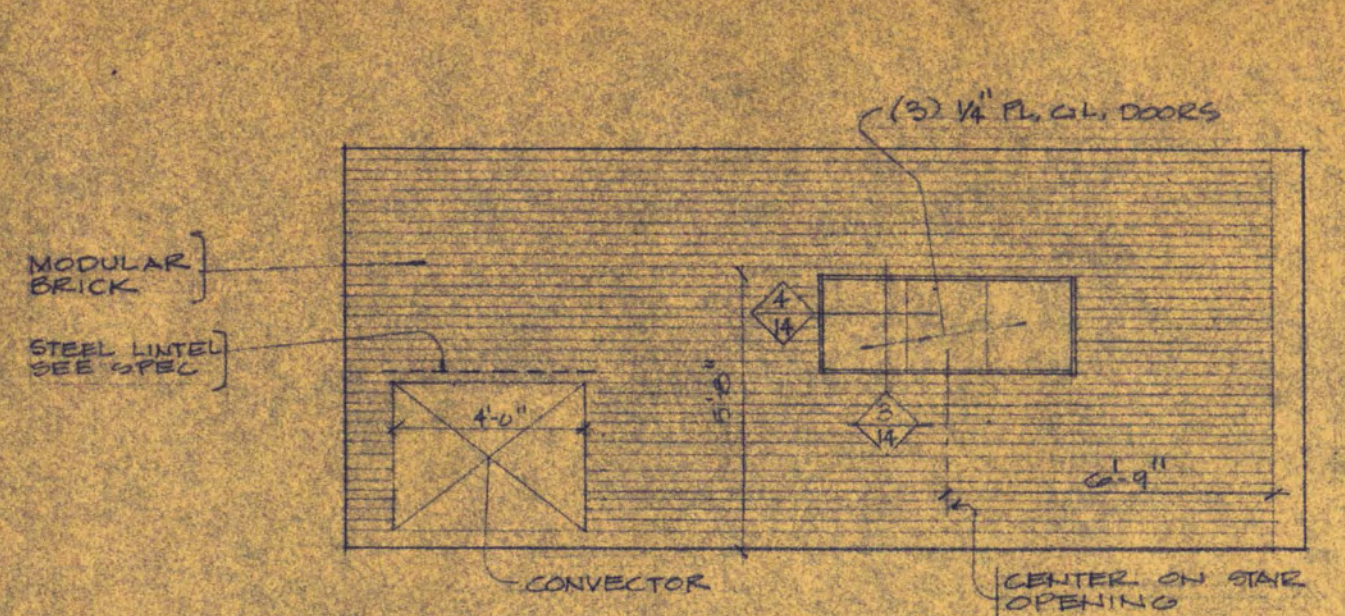
TRAYNOR AND HERMANSON ARCHITECTS  
 ST. CLOUD, MINNESOTA  
 STRUCTURAL ENGINEERS - JOHNSTON & SAHLMAN MINNEAPOLIS  
 CONSULTING ENGINEERS - ORR, SCHELEN, MAYERON & ASSOCIATES INC. MINNEAPOLIS

APPROVED BY: PRESIDENT OF ST. CLOUD STATE COLLEGE DATE: 5/15/47  
 APPROVED BY: STATE COLLEGE BOARD DRAWN BY: ED  
 APPROVED BY: COMMISSIONER OF ADMINISTRATION AN AUTHORIZED SIGNATURE CHECKED:

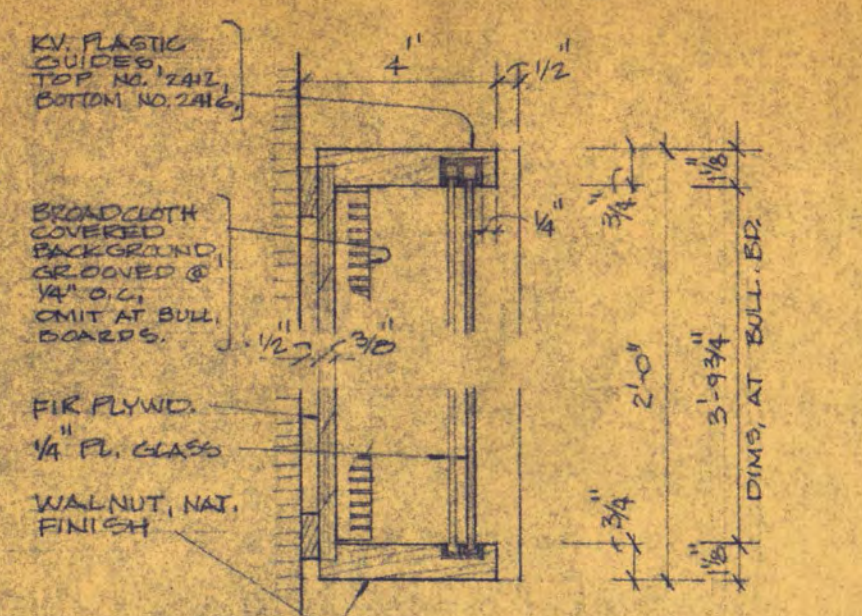
DATE: 5/15/47  
 DRAWN BY: ED  
 CHECKED:

STATE OF MINNESOTA  
 6360090

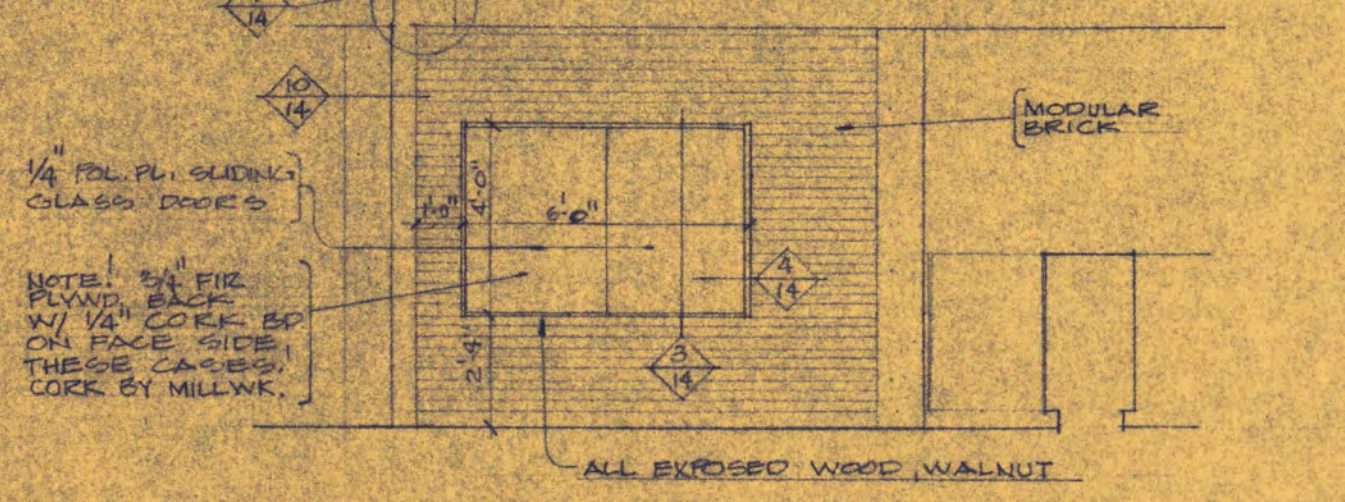
43  
 SHEET NO.  
 13  
 OF 14  
 PROJECT NO.  
 STATE OF MINNESOTA  
 6360090



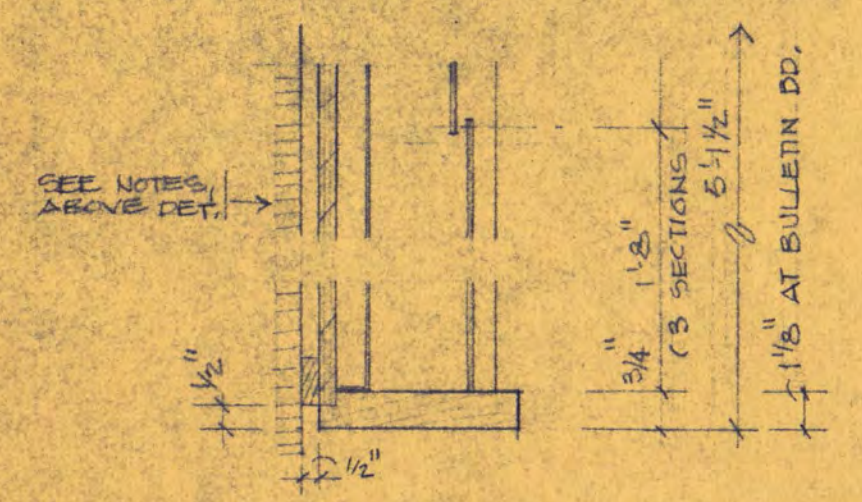
ELEV. STAIR A FIRST FL. BLDG. DIRECTORY  
1/4" = 1'-0"



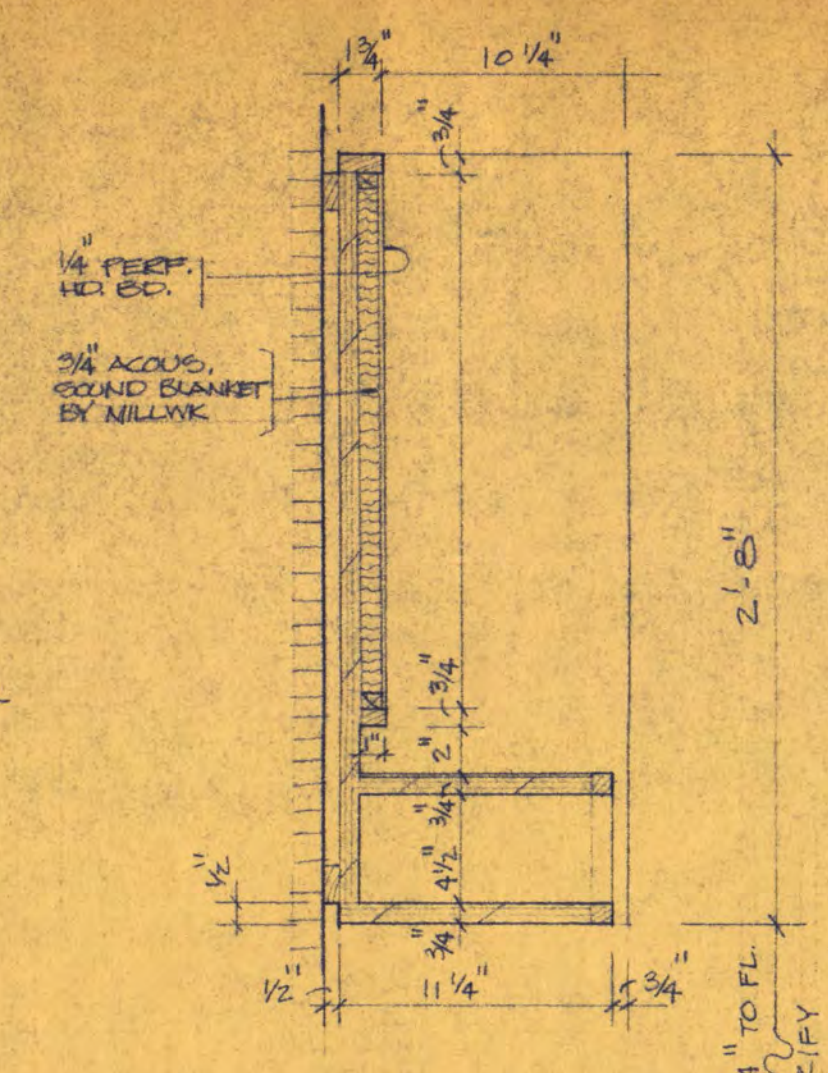
SECTION - BLDG. DIRECTORY  
1/4" = 1'-0"



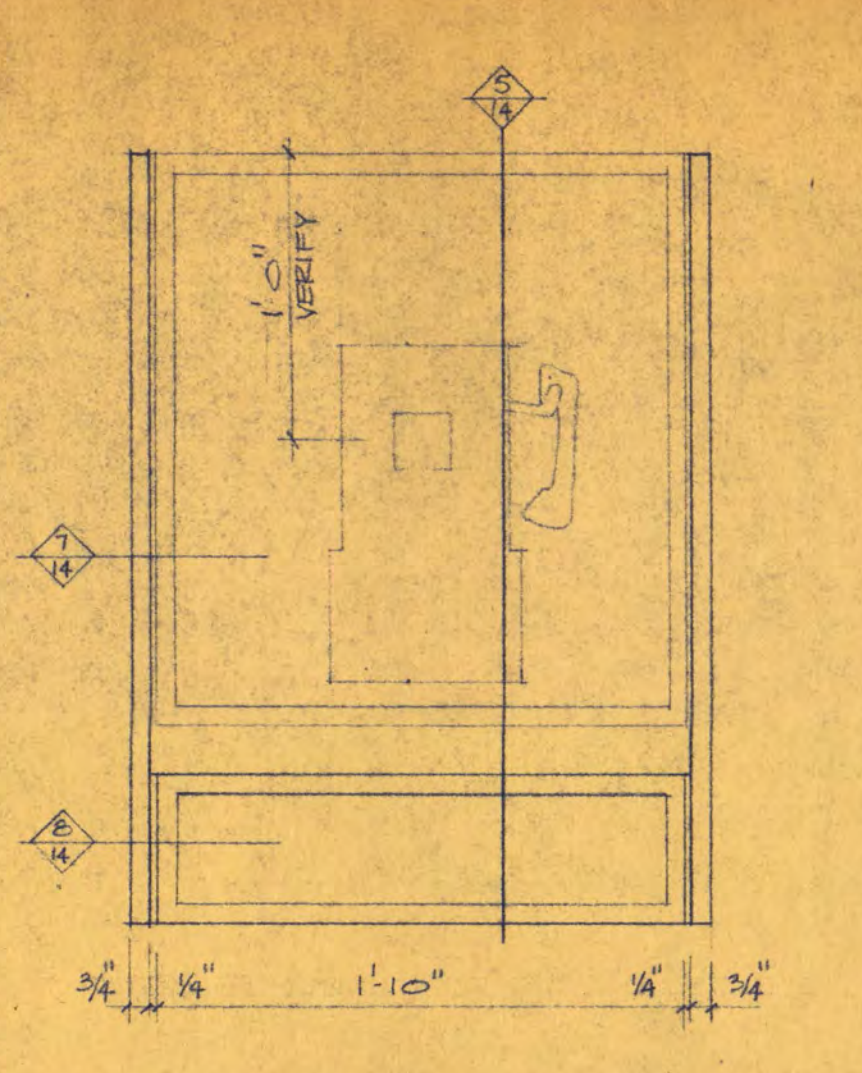
BULLETIN BOARD, WAITING AREA, 3 FLOORS  
1/4" = 1'-0"



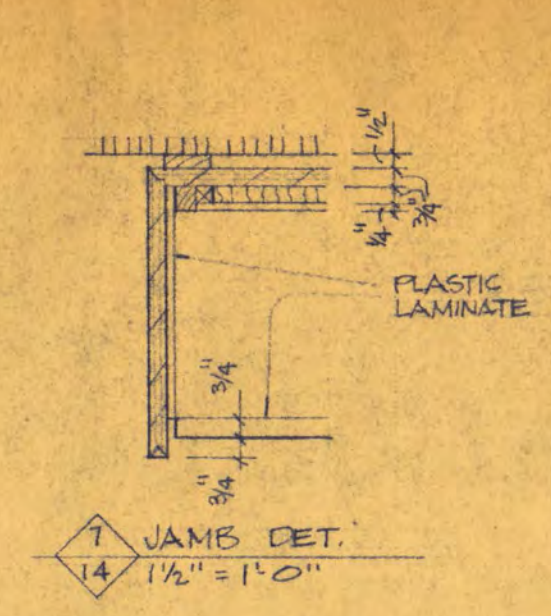
TYPICAL JAMB - BLDG. DIRECTORY  
1/4" = 1'-0"



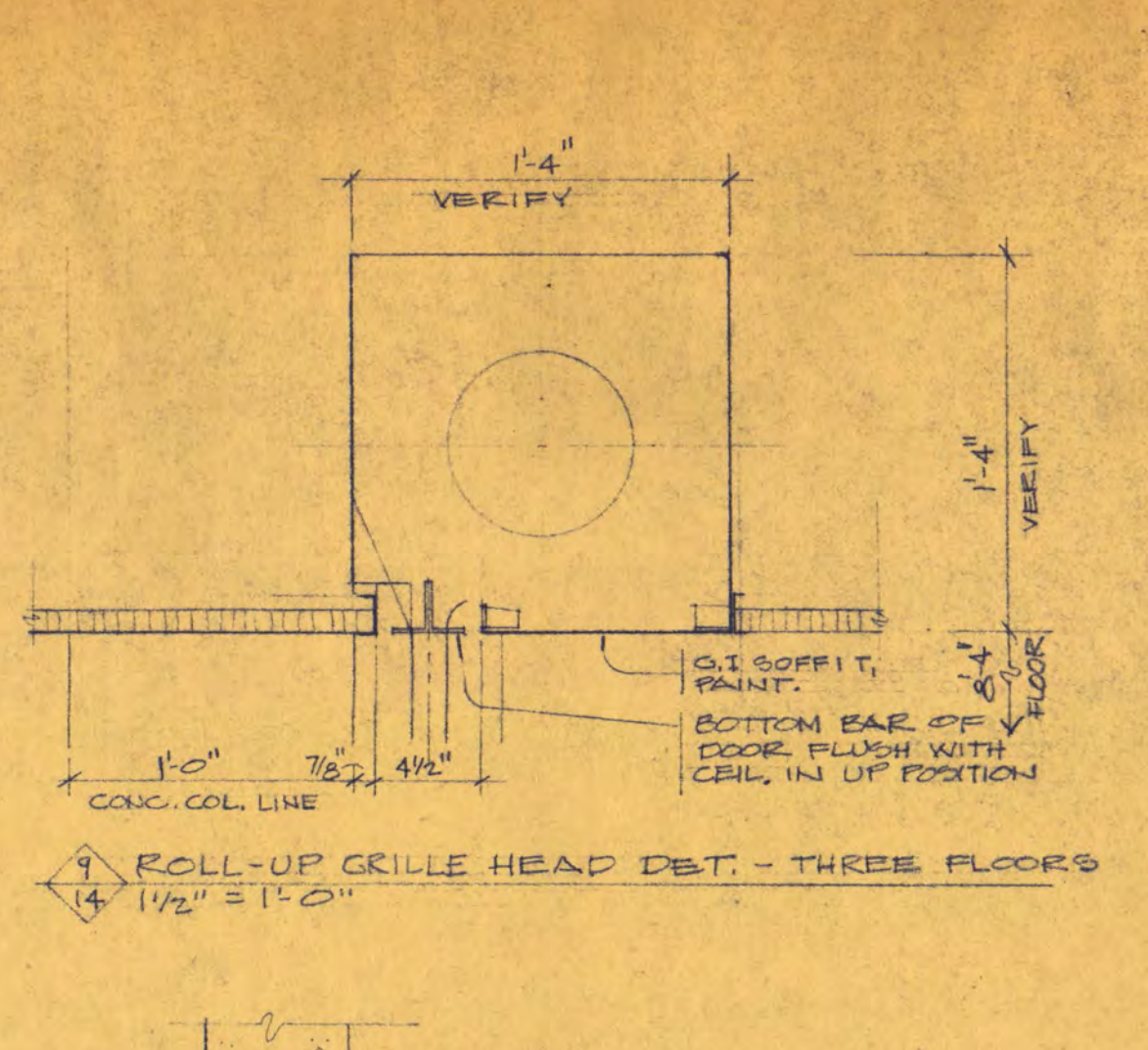
SECTION - TEL. BOOTH - 2 THUS  
1/4" = 1'-0"



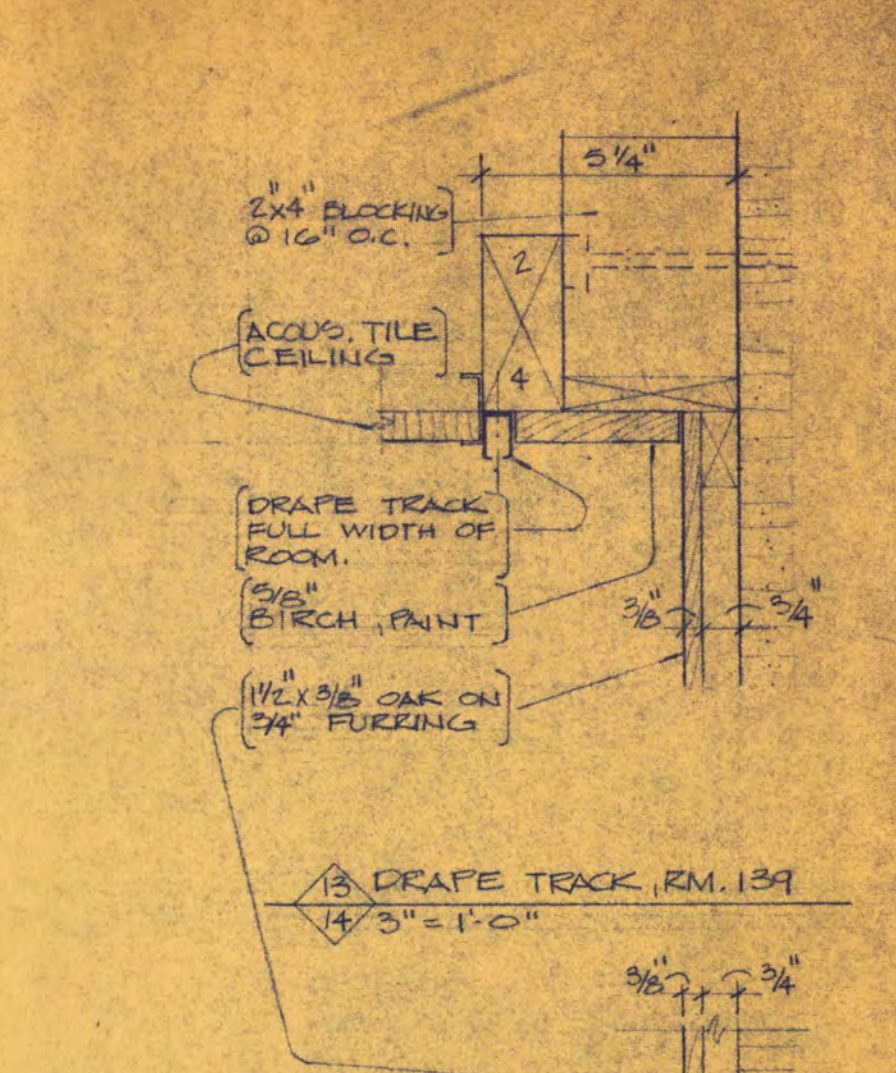
ELEVATION - TEL. BOOTH, 2 THUS  
1/4" = 1'-0"



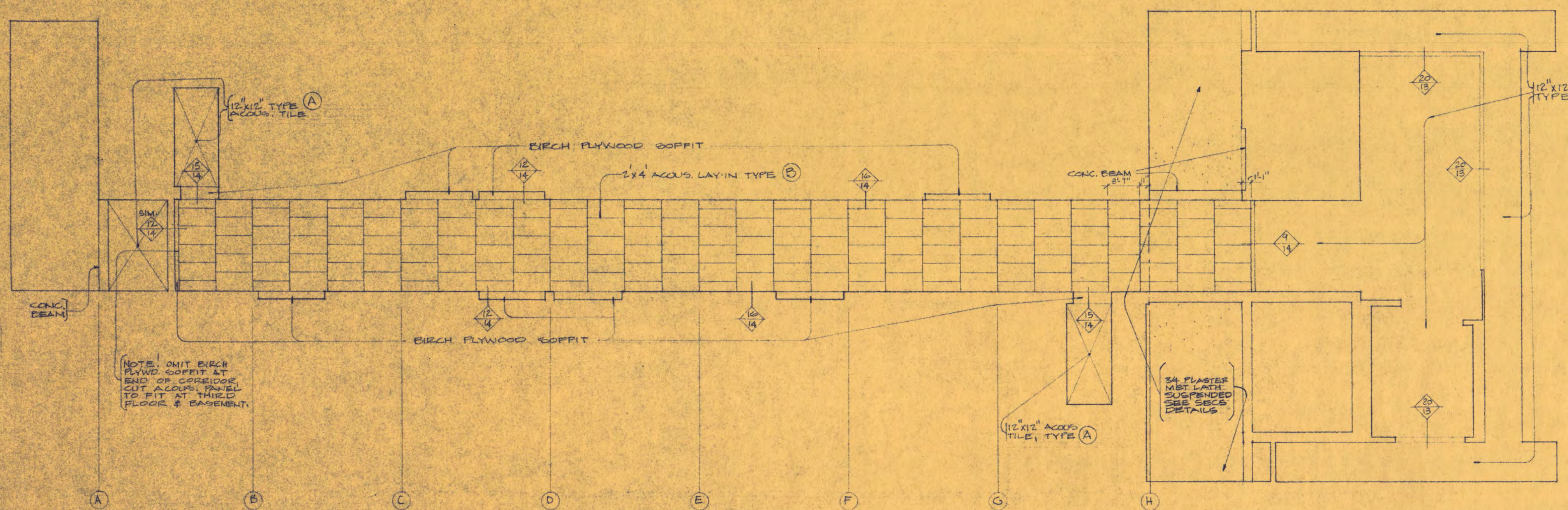
JAMB DET.  
1/4" = 1'-0"



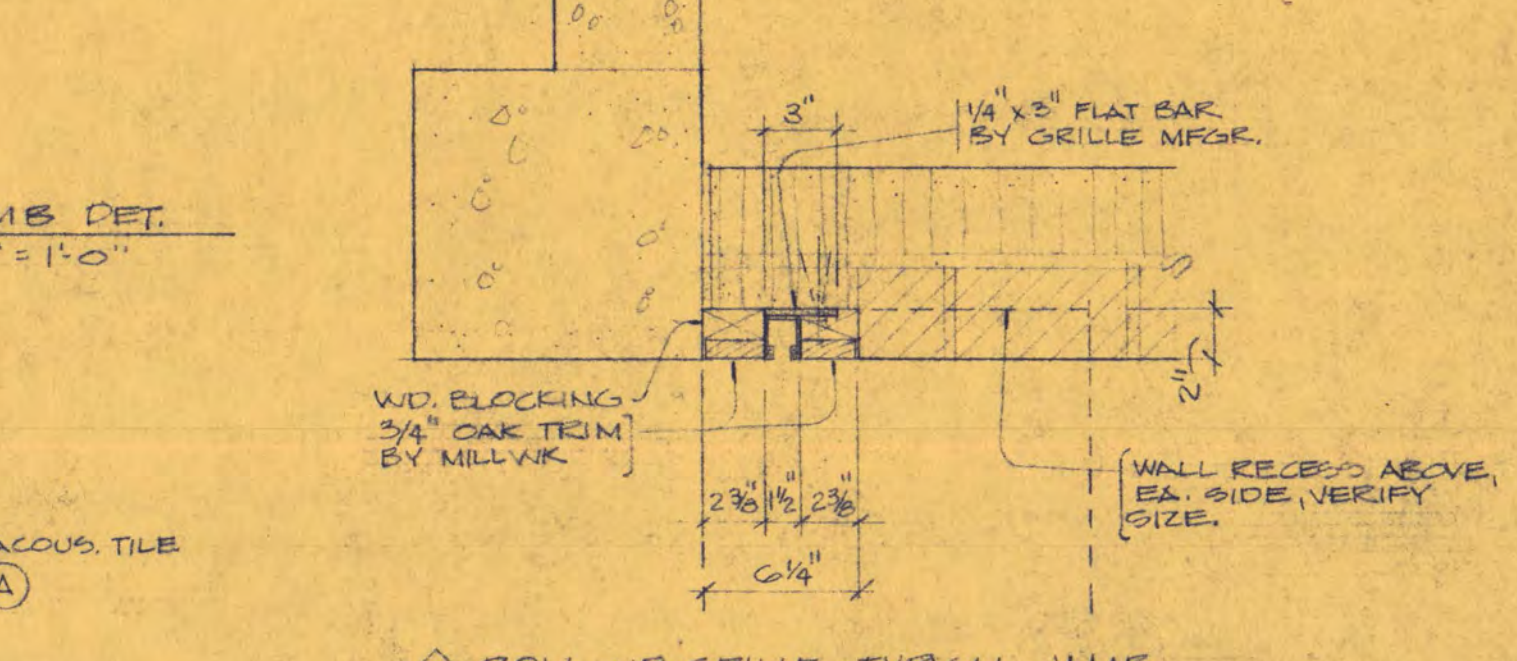
ROLL-UP GRILLE HEAD DET. - THREE FLOORS  
1/4" = 1'-0"



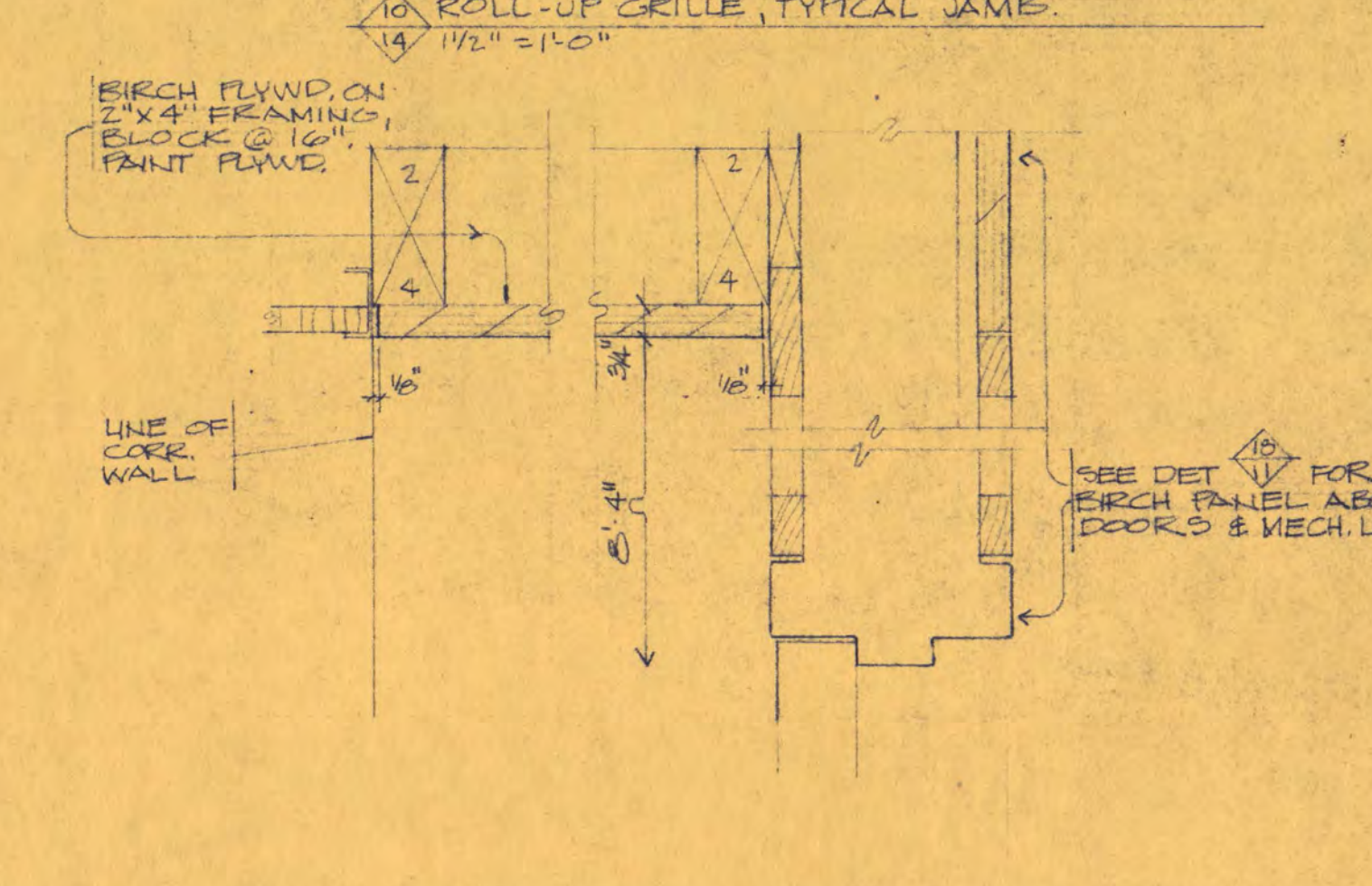
DRAPE TRACK, RM. 139  
1/4" = 1'-0"



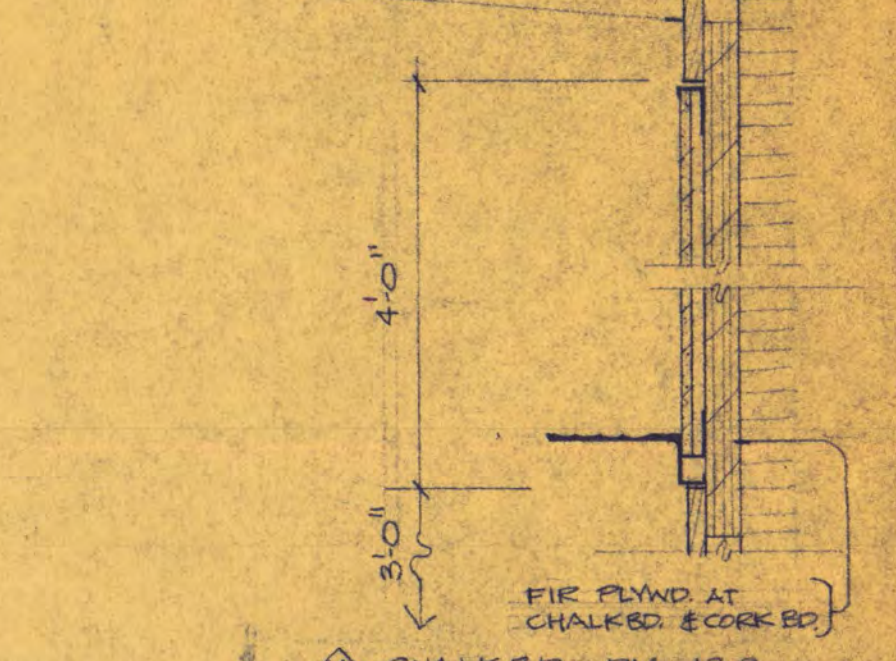
REFLECTED CEILING PLAN - FIRST FLOOR CORRIDOR 122 & TYPICAL FOUR FLOORS  
1/8" = 1'-0"



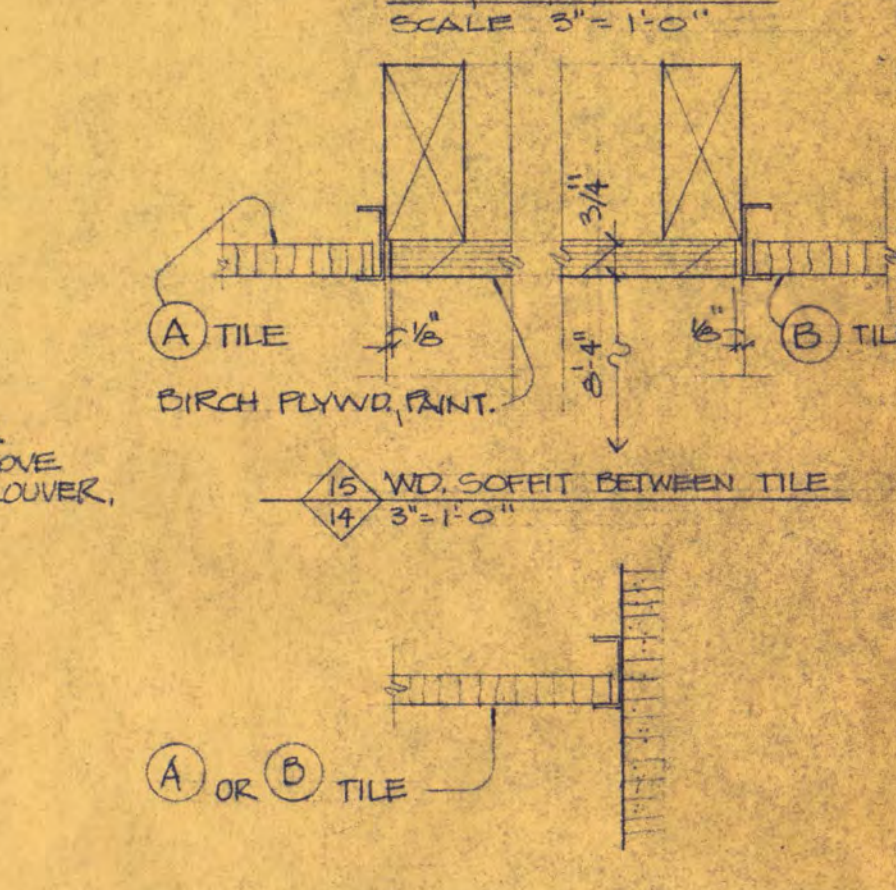
ROLL-UP GRILLE, TYPICAL JAMB.  
1/4" = 1'-0"



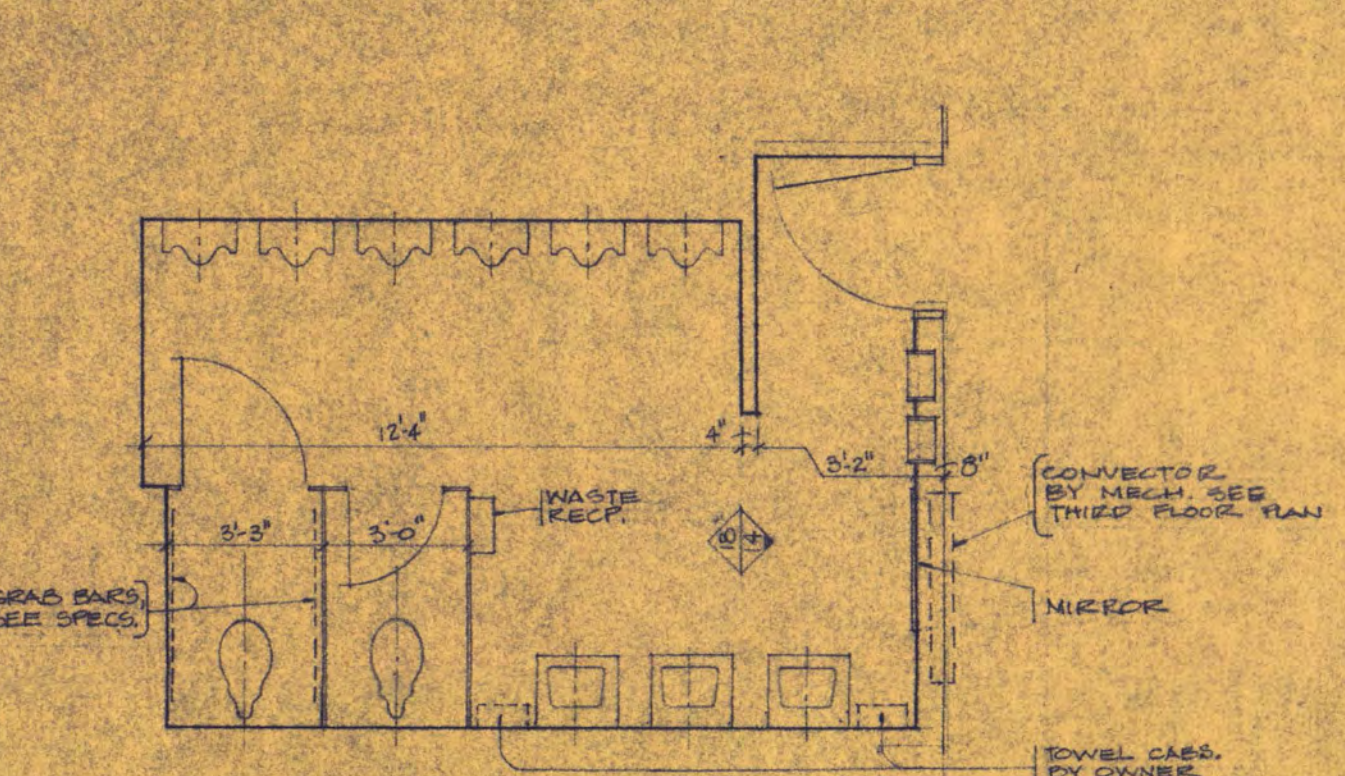
DET. BIRCH PLYWD. SOFFIT @ CORE DOORS  
1/4" = 1'-0"



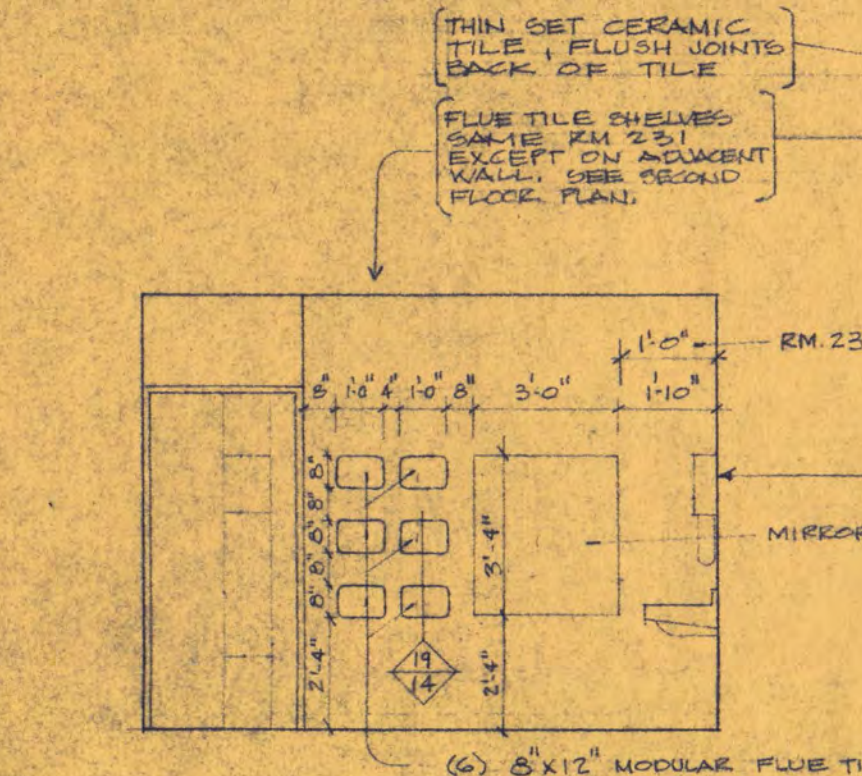
CHALKED, RM. 139  
SIMILAR AT RMs. 140, 230, 231  
SCALE 3/8" = 1'-0"



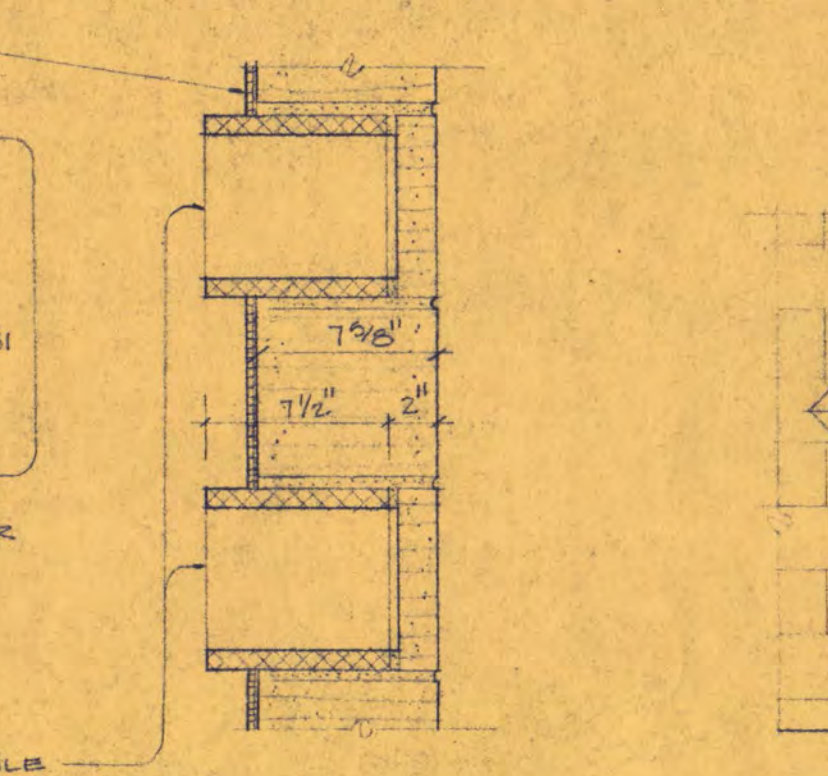
TYPICAL ACoust. TILE AT WALL  
1/4" = 1'-0"



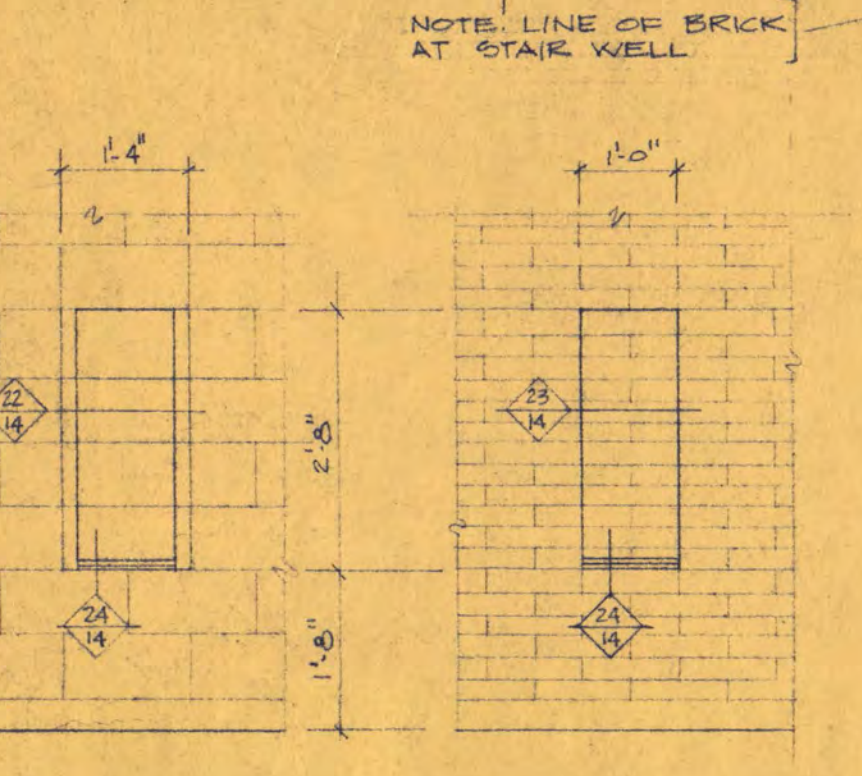
TYPICAL TOILET ROOM FLOOR PLAN  
MEN, RMs. 141 & 332 (SEE 1/8" PLAN FOR WOMEN'S TOIL. RM. 231)  
1/4" = 1'-0"



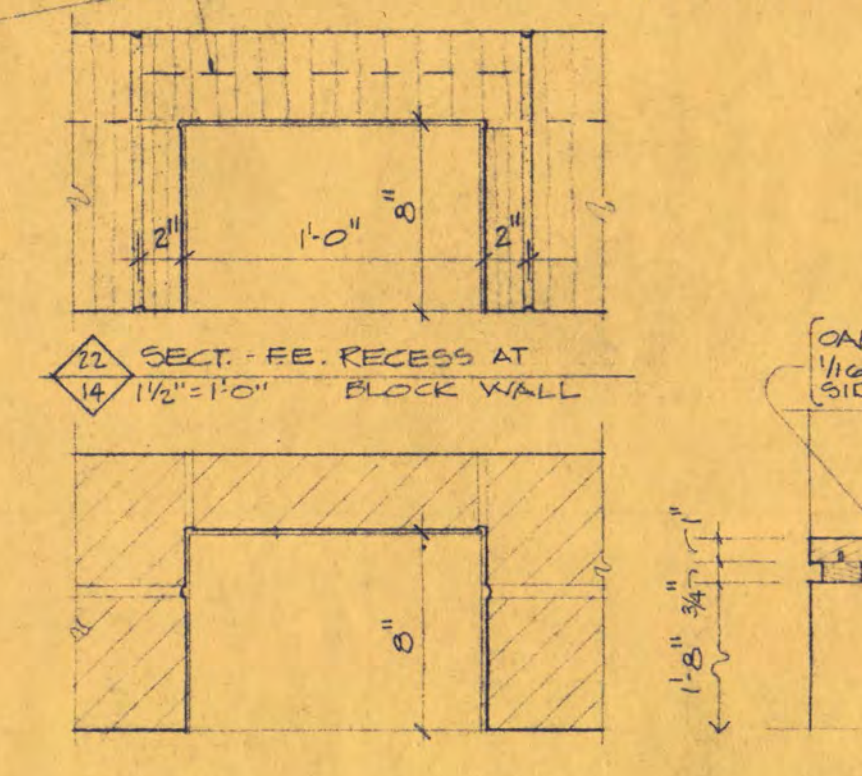
ELEV. TOILET RM. 141 & 332  
& 231 SIMILAR  
1/4" = 1'-0"



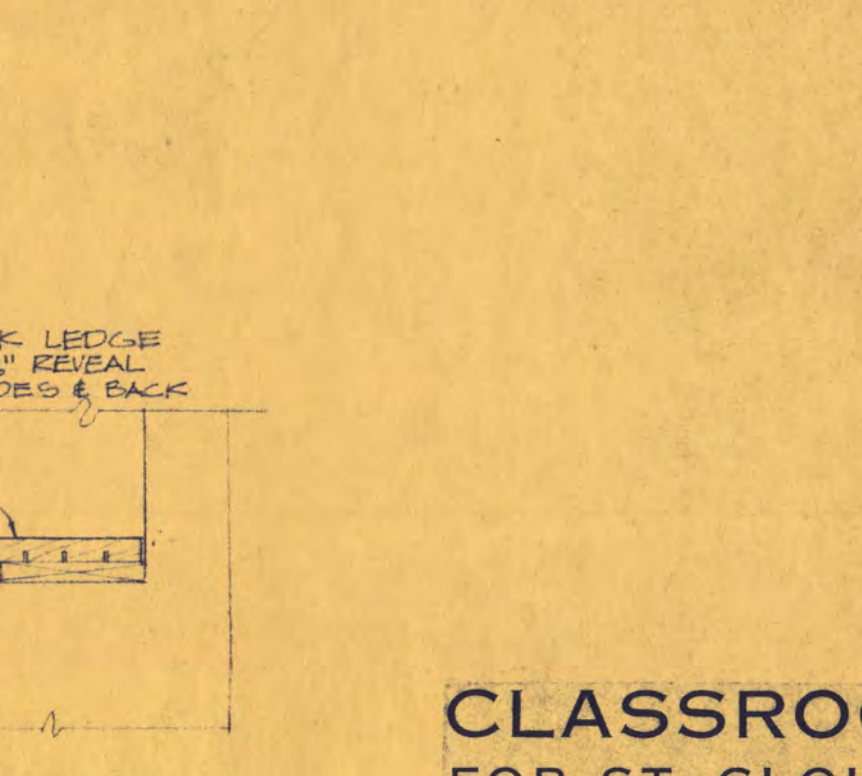
SECTION - FIVE TILE SHELVES  
1/4" = 1'-0"



ELEV. FE. RECESS BLOCK WALL  
1/4" = 1'-0"



ELEV. FE. RECESS BRICK WALL  
1/4" = 1'-0"



SECT. FE. RECESS AT BLOCK WALL  
1/4" = 1'-0"



SECT. FE. RECESS AT BRICK WALL  
1/4" = 1'-0"

**CLASSROOM BUILDING**

FOR ST. CLOUD STATE COLLEGE  
DEPARTMENT OF ADMINISTRATION STATE OF MINNESOTA  
STATE CAPITOL BUILDING ST. PAUL, MINNESOTA  
ARCHITECTURAL AND ENGINEERING DIVISION

FEDERAL PROJECT MINN. 4-2983

TRAYNOR AND HERMANSON ARCHITECTS  
ST. CLOUD, MINNESOTA  
STRUCTURAL ENGINEERS - JOHNSTON & SAHLMAN MINNEAPOLIS  
CONSULTING ENGINEERS - ORR, SCHELEN, MAYERSON & ASSOCIATES INC. MINNEAPOLIS

APPROVED BY PRESIDENT OF ST. CLOUD STATE COLLEGE DATE: 5/15/47  
APPROVED BY STATE COLLEGE BOARD DRAWN BY: ED  
APPROVED BY COMMISSIONER OF ADMINISTRATION AS AN AUTHORIZED SIGNATURE CHECKED:

INTERIOR DETAILS

DEPARTMENT OF ADMINISTRATION MASTER BUILDING NUMBER

43

SHEET NO.

14

OF 14

PROJECT NO.

STATE OF MINNESOTA

6360090