

*Locks on P.O.'s to be kept operated
 7' same set as drawn or
 single combination*

S I T E P L A N

1" = 30' 0"

200 BED DORMITORY
 ST. CLOUD STATE COLLEGE

SERIES F-2
 ST. CLOUD, MINNESOTA

COMMISSION NO.
 28-6514
 STATE PROJECT NO.
 F-2
 DATE
 4-14-65

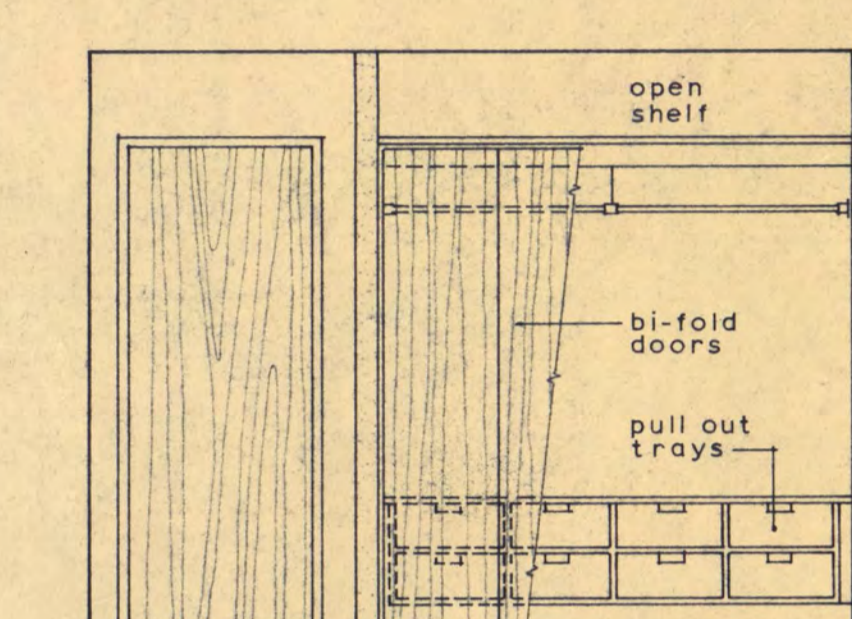
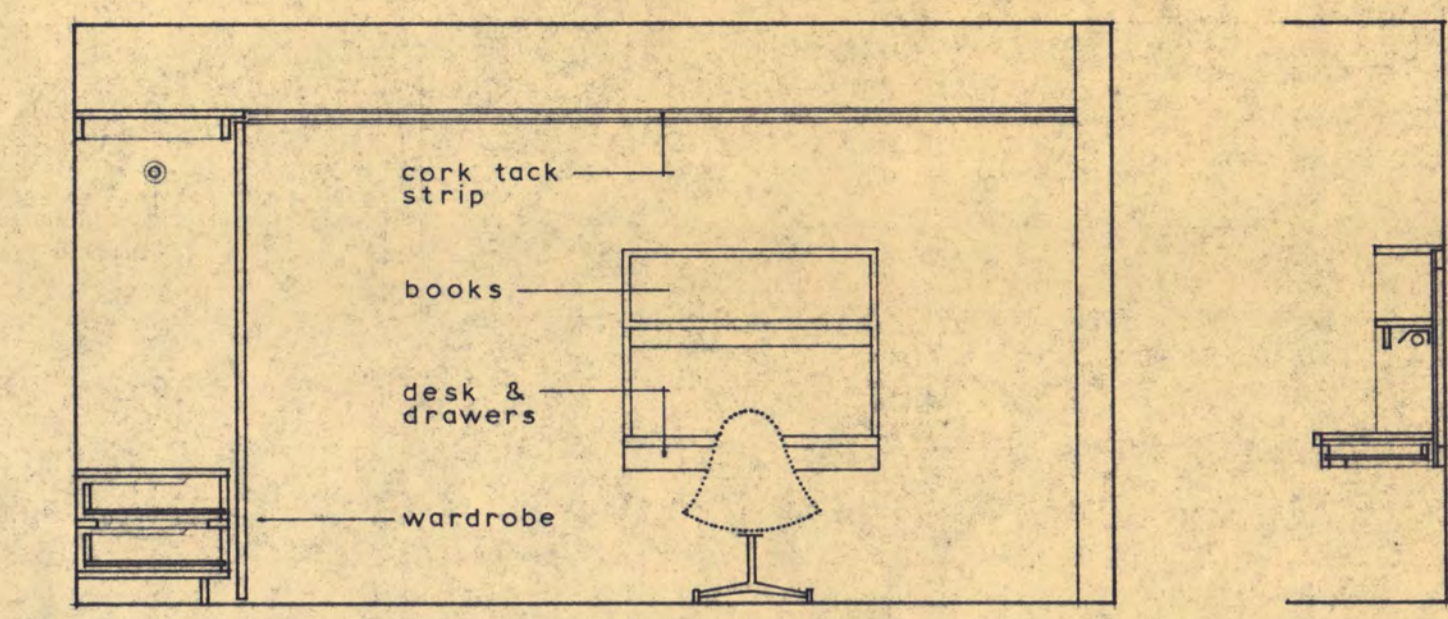
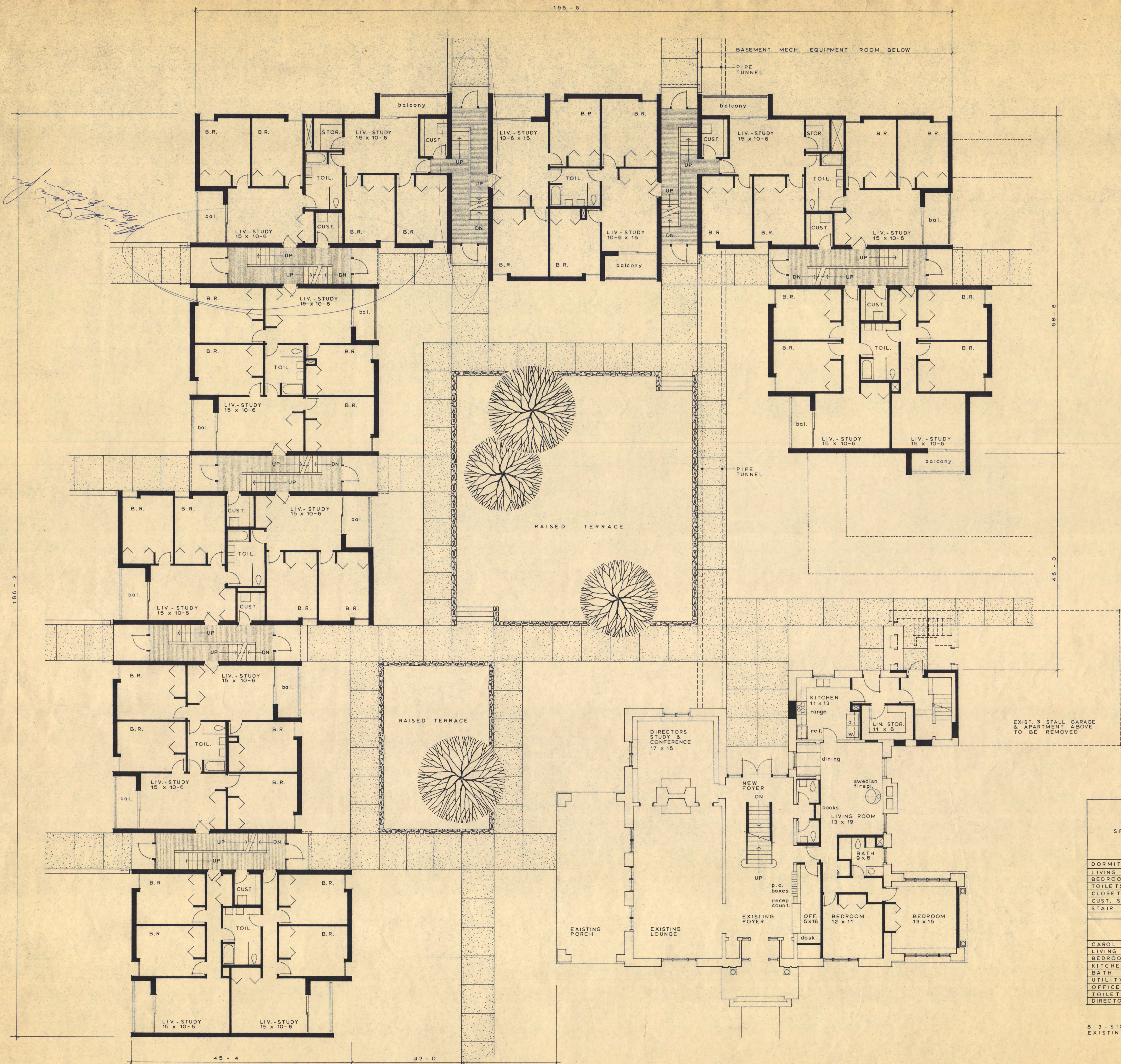
I HEREBY CERTIFY THAT THIS PLAN, SPECIFICATION OR REPORT WAS PREPARED BY ME OR UNDER MY DIRECT SUPERVISION AND THAT I AM A FULLY REGISTERED ARCHITECT UNDER THE LAWS OF THE STATE OF MINNESOTA.
 DATE 4/14/65 REG. NO. 5568



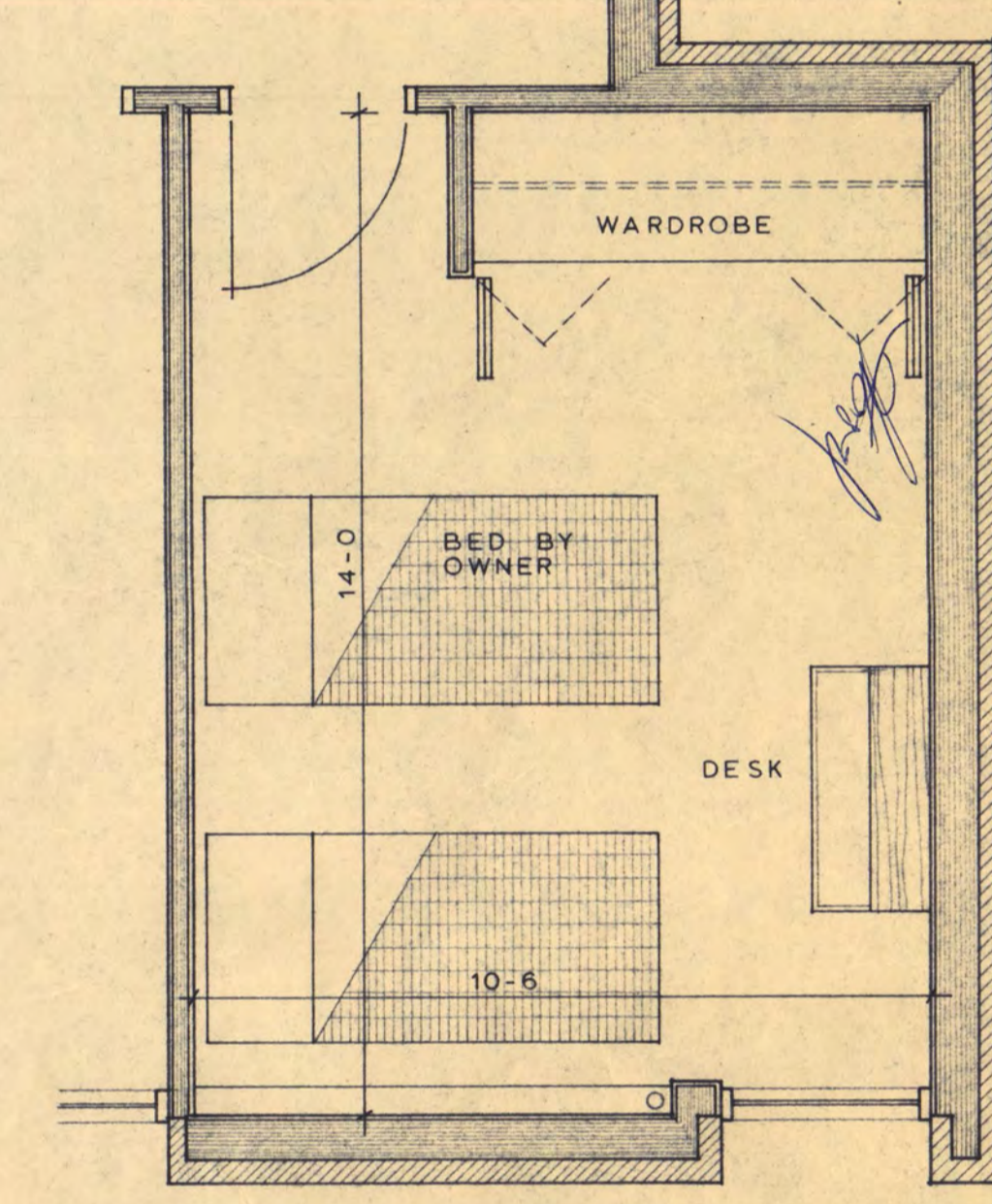
JACKSON - HAHN ASSOCIATES, INC.
 ARCHITECTS
 102 THIRD AVENUE SOUTH
 ST. CLOUD, MINNESOTA

SHEET NUMBER
1
 OF 3 SHEETS

*John X. Wick
 J. J. DeW. Patton
 WH
 4/14/65*



TYPICAL BEDROOM DETAILS
3/8" = 1'-0"



EXIST 3 STALL GARAGE & APARTMENT ABOVE TO BE REMOVED

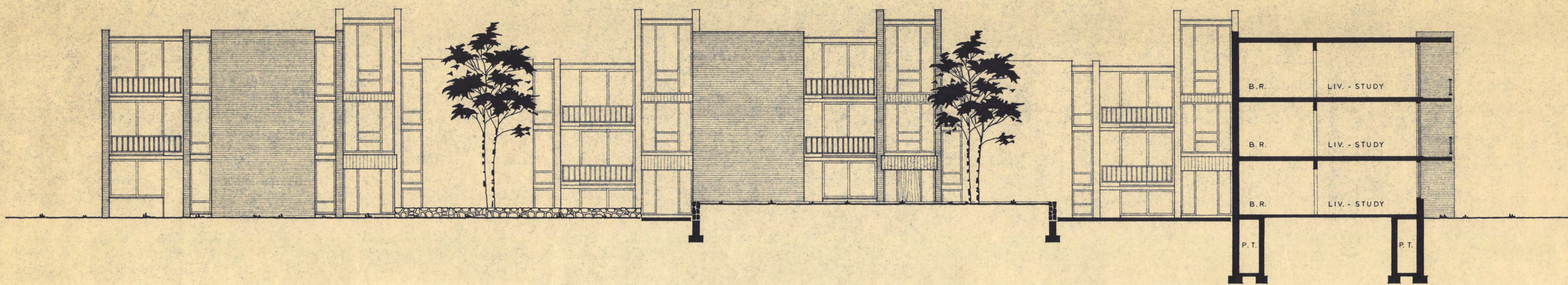
SPACE	FLOOR	BASE	WAINSC	WALLS	CEILING	TRIM
DORMITORY APARTMENT UNITS						
LIVING STUDY RMS						
BED ROOMS						
TOILETS						
CLOSETS						
CUST. SPACES						
STAIR HALLS						
CAROL HALL REMODELING - DIRECTORS APARTMENT						
LIVING ROOM						
BED ROOMS						
KITCHEN						
BATH						
UTILITY						
OFFICE						
TOILETS						
DIRECTORS STUDY EXISTING WORK TO REMAIN						

8 3-STORY UNITS AT 24 STUDENTS PER UNIT 192 BEDS
EXISTING CAROL HALL CAPACITY 22-34 BEDS

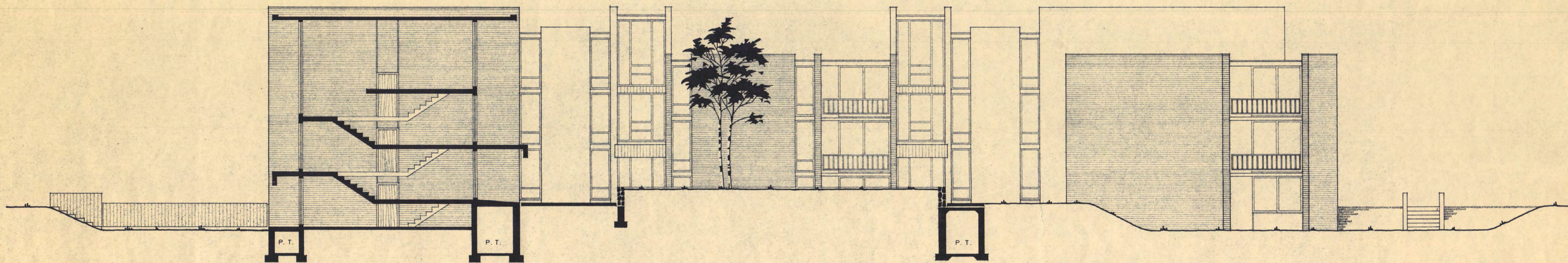
11,900 SQ. FT. PER FLOOR X 3 FLOORS 35,700 SQ. FT.
MECHANICAL EQUIPMENT ROOM 1,345 SQ. FT.
PIPE TUNNELS & CAROL HALL REMODELING 4,455 SQ. FT.
TOTAL GROSS AREA 41,500 SQ. FT.

TYPICAL 1st, 2nd & 3rd FLOOR PLAN CAROL HALL 1st FLOOR REMODELING
1/8" = 1'-0"

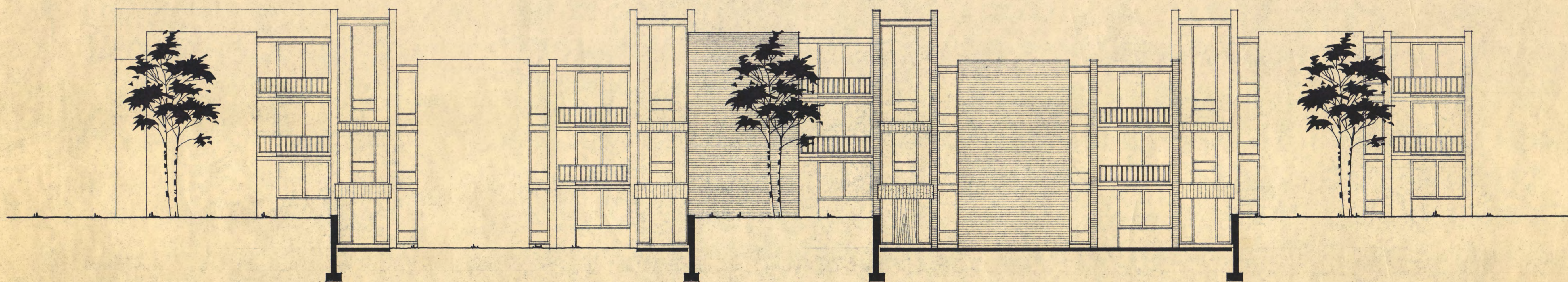




NORTH ELEVATION

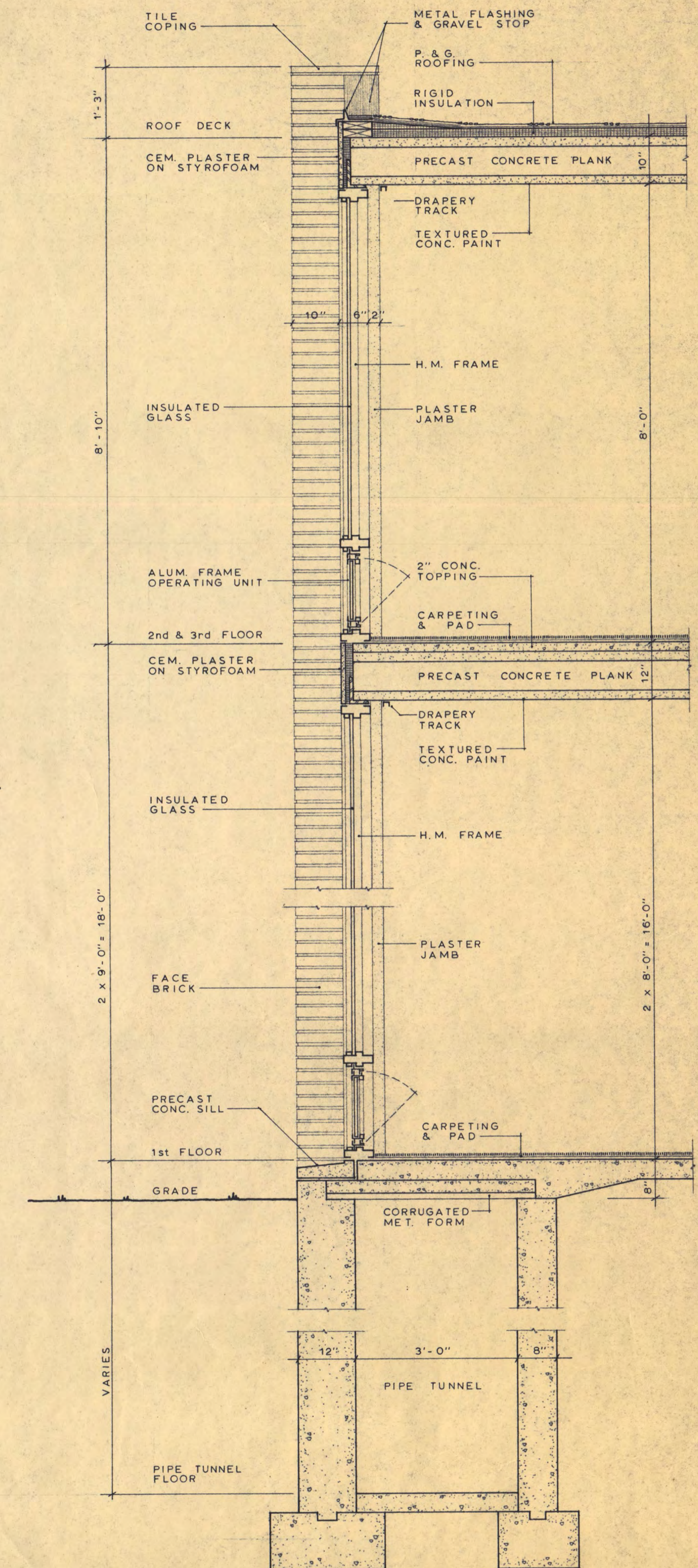


EAST ELEVATION



SOUTH ELEVATION

1/8" = 1'-0"



TYPICAL WALL SECTION

3/4" = 1'-0"