

WALTER BUTLER COMPANY
HAARSTICK LUNDGREN AND ASSOCIATES INC.
 ARCHITECTS ENGINEERS
 ST. PAUL MINN.

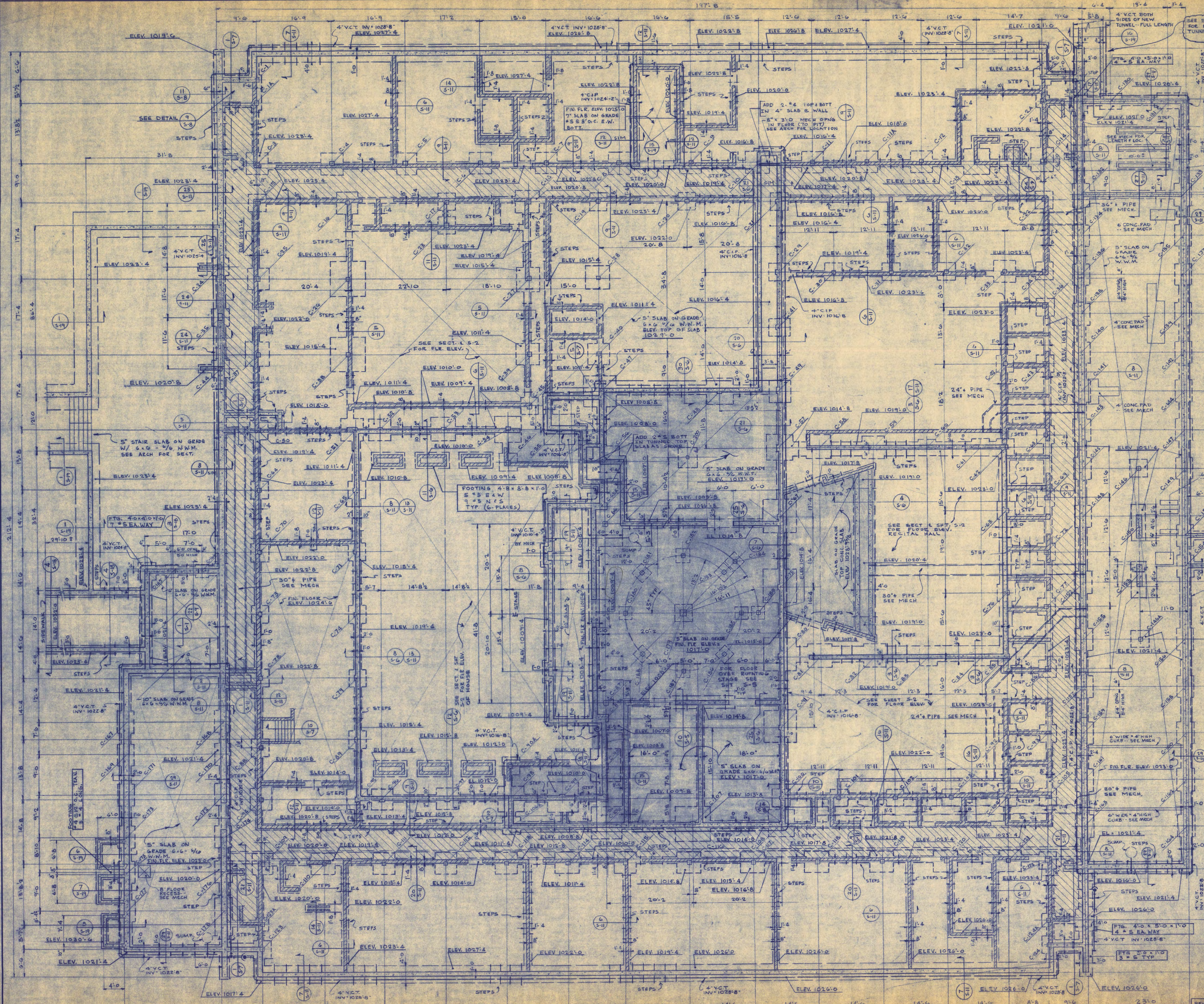
FINE ARTS BUILDING
 ST. CLOUD STATE COLLEGE
 ST. CLOUD, MINNESOTA
 DEPARTMENT OF ADMINISTRATION - STATE OF MINNESOTA
 A. J. NELSON STATE ARCHITECT

STATE PROJECT NO. 3750
 COMMA NO. 6401
 DATE 6-15-65
 DRAWN BY J.E.P.
 CHECKED BY D.B.D.
 SHEET NO. A-19
 REV. DATE 7-16-64
 OF 19 SHEETS

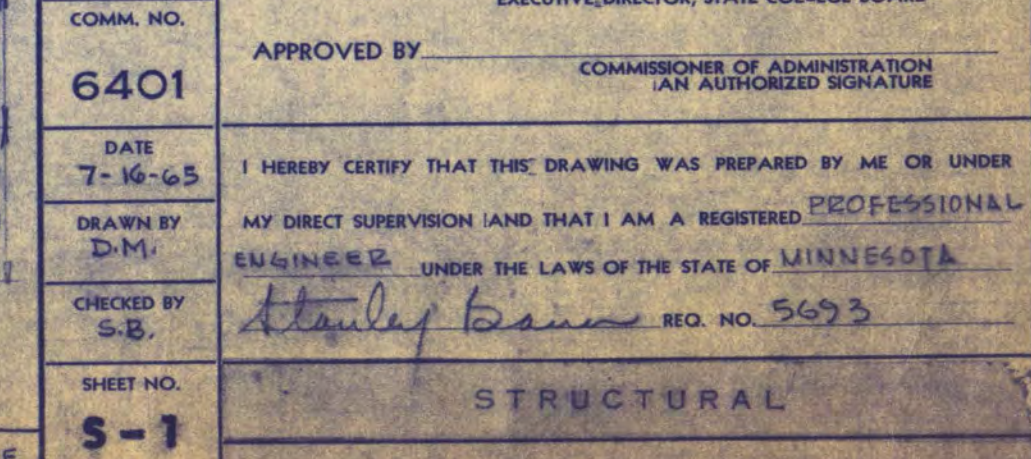
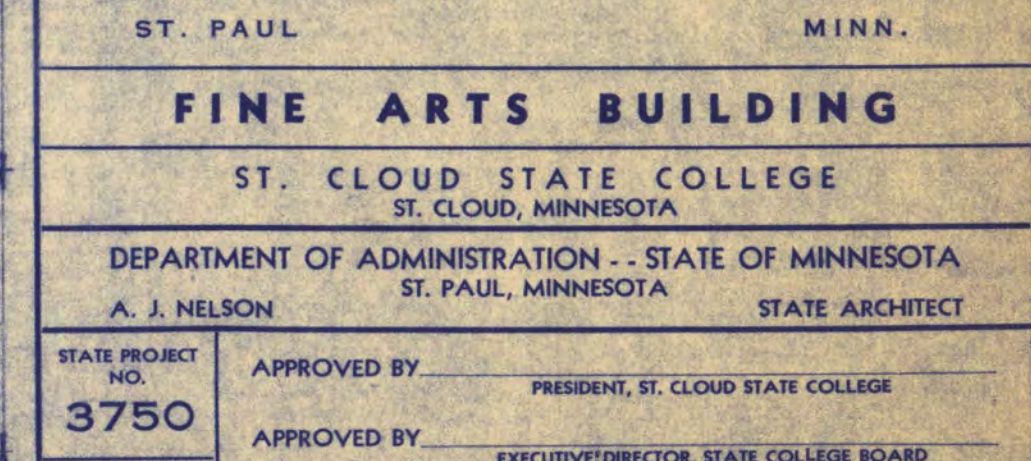
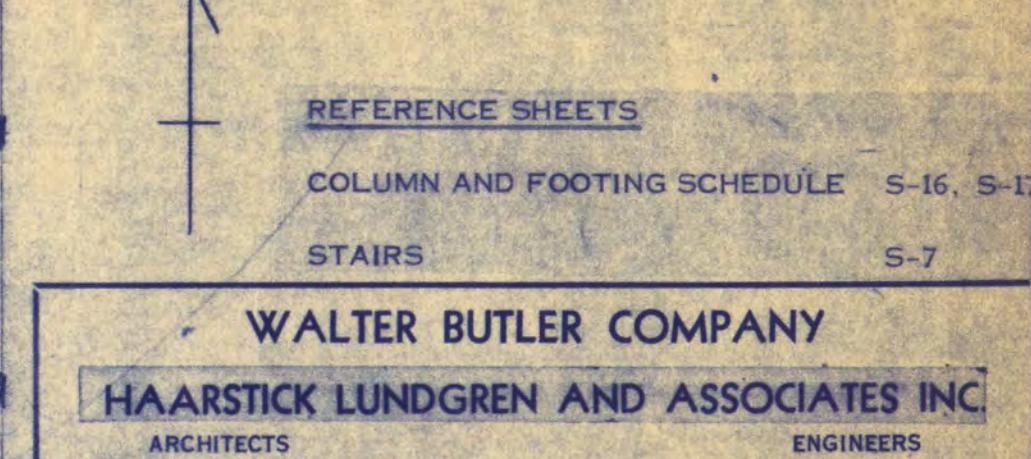
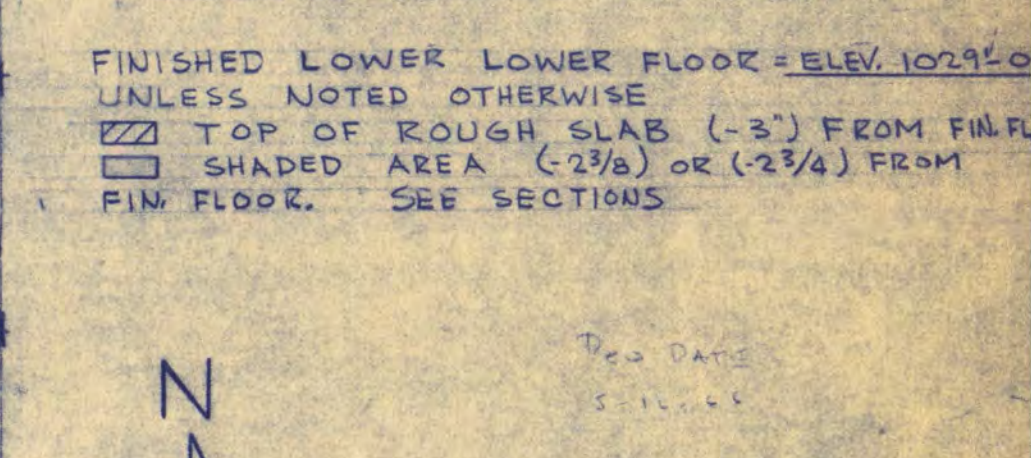
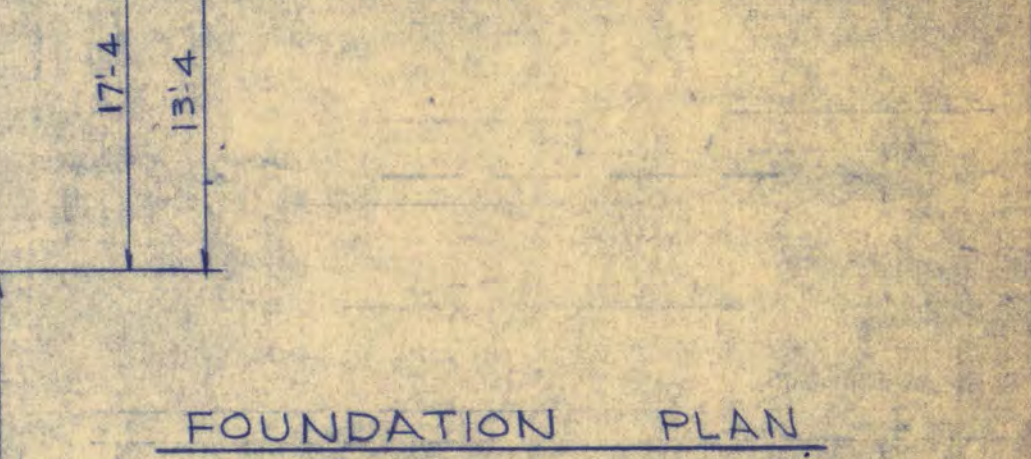
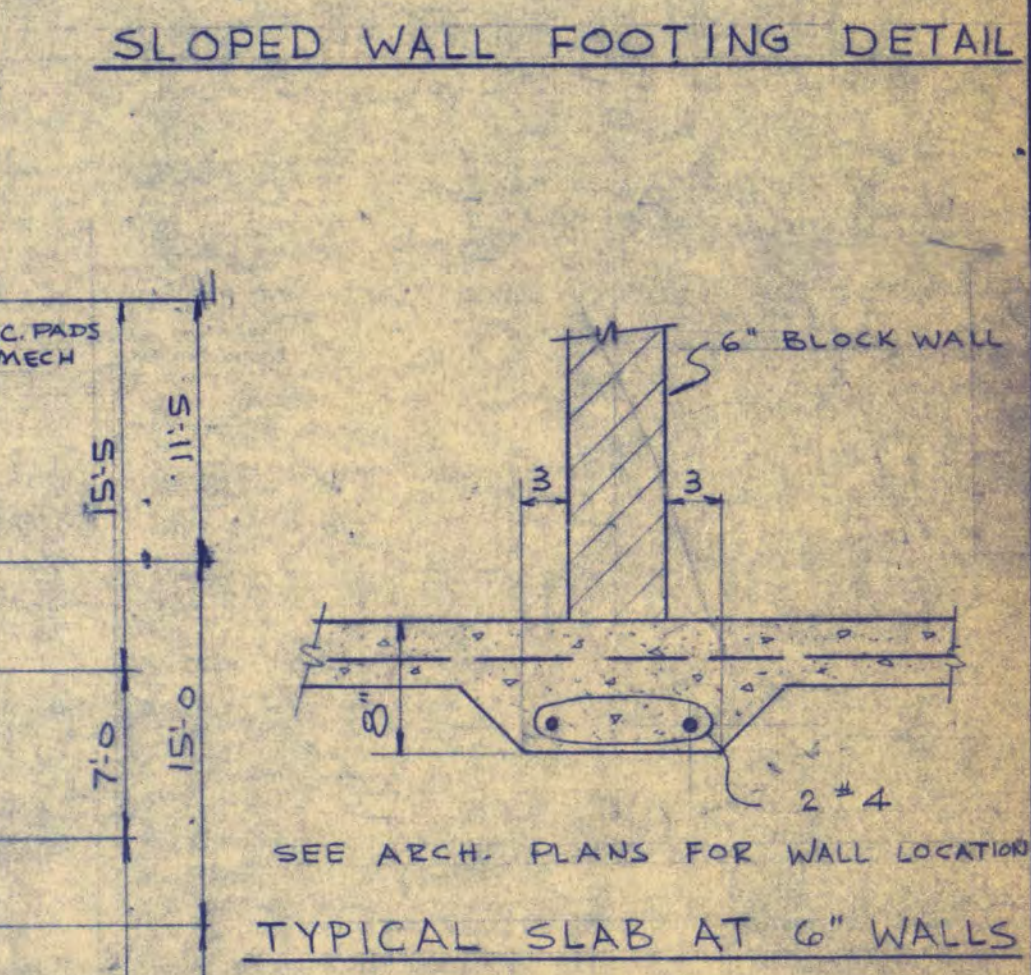
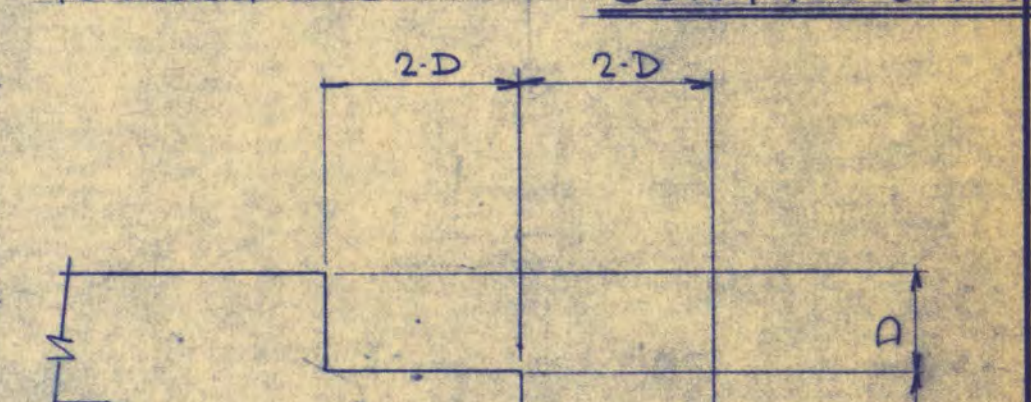
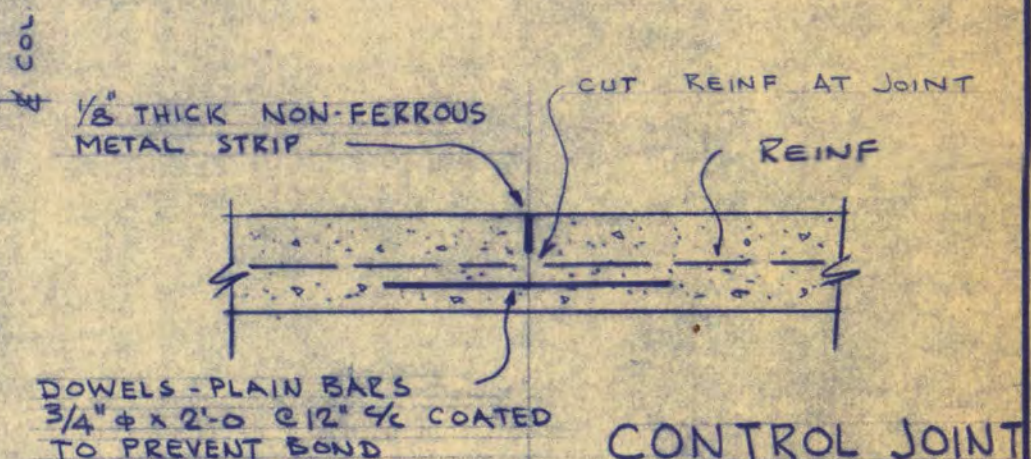
APPROVED BY: PRESIDENT, ST. CLOUD STATE COLLEGE
 APPROVED BY: EXECUTIVE DIRECTOR, STATE COLLEGE BOARD
 APPROVED BY: COMMISSIONER OF ADMINISTRATION, STATE OF MINNESOTA

I HEREBY CERTIFY THAT THIS DRAWING WAS PREPARED BY ME OR UNDER MY DIRECT SUPERVISION AND THAT I AM A REGISTERED ARCHITECT UNDER THE LAWS OF THE STATE OF MINNESOTA.

ARCHITECTURAL
 MISCELLANEOUS DETAILS



- NOTES:
1. ALL ELEVATIONS ARE BOTTOM OF FOOTINGS UNLESS NOTED OTHERWISE.
 2. FLOOR CONSTRUCTION: 4" REIN. CONCRETE SLAB ON GRADE, REIN. W/6" - 10" W.W.M. EXCEPT WHERE NOTED OTHERWISE.
 3. SEE TYPICAL DETAIL BELOW FOR STEPS IN FOOTINGS.
 4. SEE ARCHITECTURAL PLANS FOR LOCATION OF BLOCK WALLS.
 5. ALL FOOTINGS ARE CENTERED ON WALLS AND COLUMNS.
 6. SEE SHEET S-16 AND S-17 FOR COLUMN FOOTINGS.
 7. DRAIN TILE WILL BE 4" V.C.T. NON-PERFORATED. PIPES THROUGH WALLS AND BELOW FLOOR SLABS WILL BE 4" C.I.P. SEE DETAILS 7/5-11 AND 22/5-14 FOR TYPICAL LOCATIONS AND RISERS.



WALTER BUTLER COMPANY
HAARSTICK LUNDGREN AND ASSOCIATES INC.
 ARCHITECTS ENGINEERS
 ST. PAUL MINN.

FINE ARTS BUILDING
 ST. CLOUD STATE COLLEGE
 ST. CLOUD, MINNESOTA

DEPARTMENT OF ADMINISTRATION - STATE OF MINNESOTA
 A. J. NELSON STATE ARCHITECT

STATE PROJECT NO. 3750
 COM. NO. 6401

APPROVED BY: PRESIDENT, ST. CLOUD STATE COLLEGE
 EXECUTIVE DIRECTOR, STATE COLLEGE BOARD
 COMMISSIONER OF ADMINISTRATION AND BUDGET

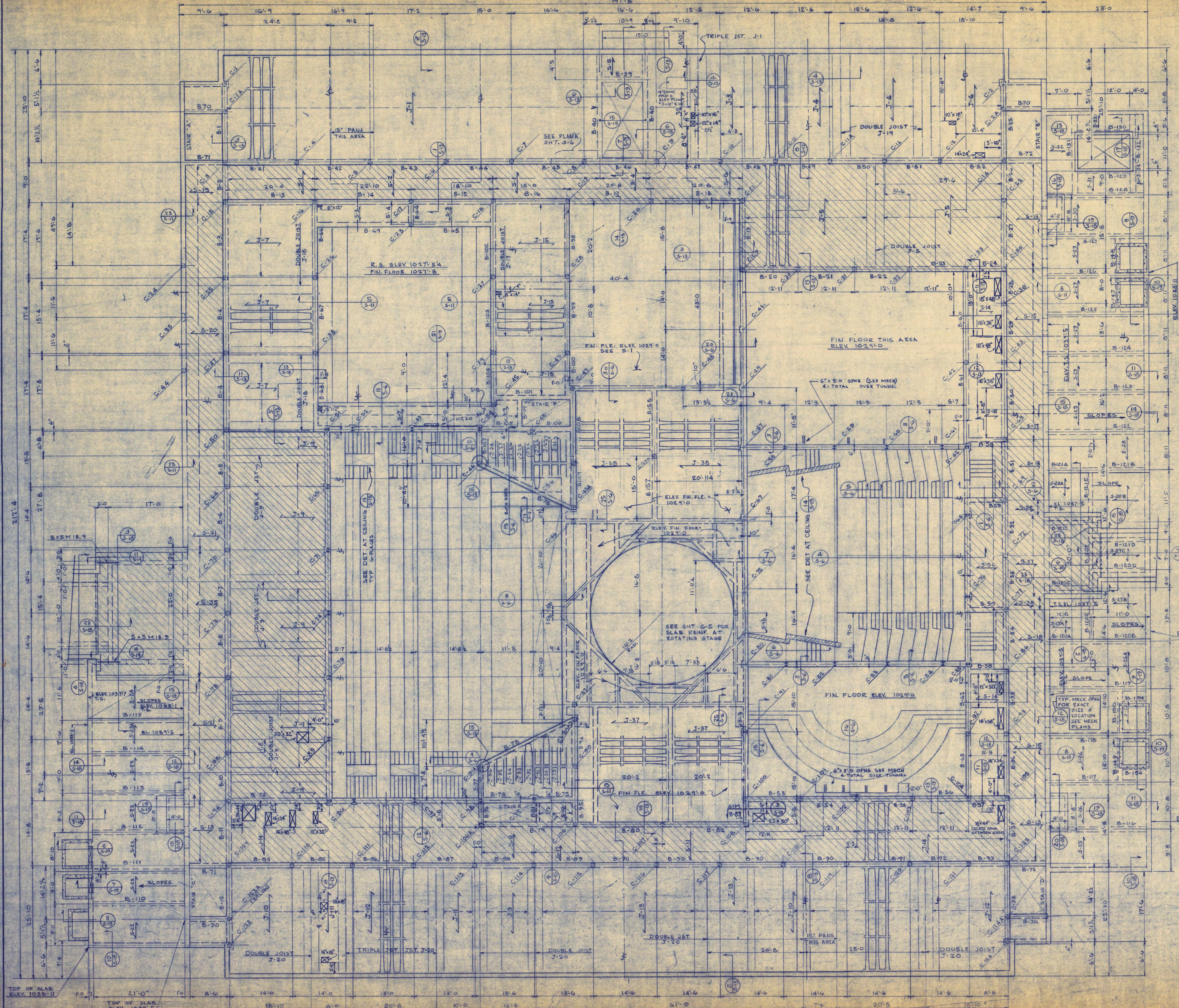
DATE: 7-16-65
 DRAWN BY: D.M.
 CHECKED BY: S.B.

I HEREBY CERTIFY THAT THE DRAWING WAS PREPARED BY ME OR UNDER MY DIRECT SUPERVISION AND THAT I AM A REGISTERED PROFESSIONAL ENGINEER UNDER THE LAWS OF THE STATE OF MINNESOTA.

Walter Butler No. 5593

SHEET NO. **S-1**
 STRUCTURAL
 FOUNDATION PLAN

REV. DATE: 5-16-66



NOTE:

ALL CONCRETE JOISTS TO HAVE 3'-0" STANDARD TAPERED ENDS.

DOUBLE JOIST INDICATES A RIB TWICE THE WIDTH AND QUANTITY OF REINFORCEMENT OF A SINGLE RIB CONCRETE JOIST.

TRIPLE JOIST INDICATES A RIB-THREE TIMES THE WIDTH AND QUANTITY OF REINFORCEMENT OF A SINGLE RIB CONCRETE JOIST.

ALL CONTROL JOINTS INDICATED THUS \int .

CONTROL JOINTS IN THE REINFORCED CONCRETE FOUNDATION WALLS ARE AT SAME LOCATION AS IN FLOOR. FOR CONTROL JOINT DETAILS SEE S-12 & 16/58.

PLACE MAIN REINFORCING STEEL SO THAT BOTTOM OF STEEL IS 2" ABOVE FORMS IN BEAMS AND 3/4" IN JOISTS AND SLABS.

ALL SLABS, JOISTS AND BEAMS SHALL HAVE NO HORIZONTAL JOINTS. ANY STOP IN CONCRETE WORK MUST BE AT CENTER OF SPAN WITH VERTICAL BULKHEADS.

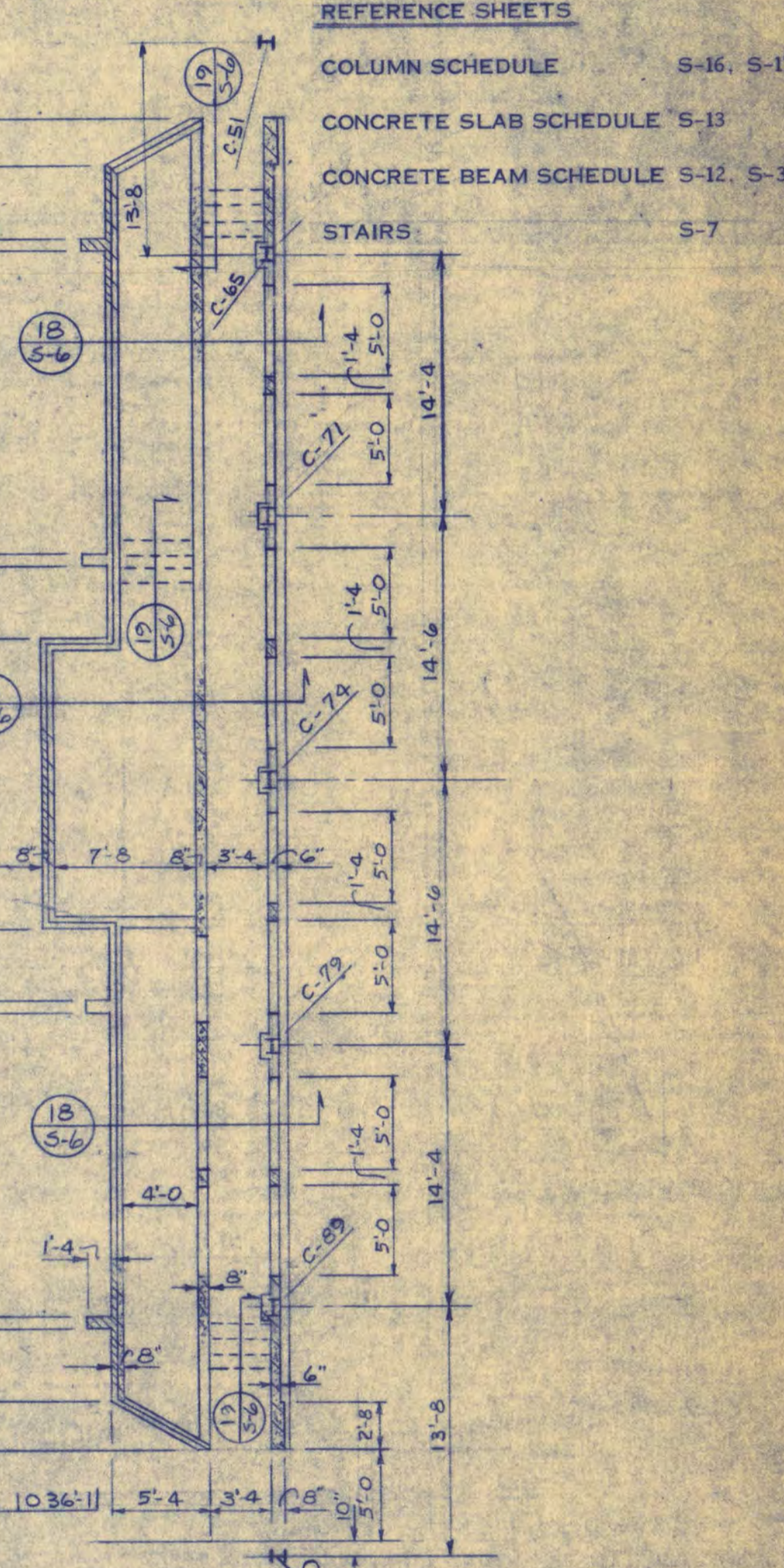
PROVIDE BAR SUPPORTS AND SPACERS IN ACCORDANCE WITH ACI 318-65 DETAILING MANUAL.

LOCATION OF POINTS OF BENDS TO BE MADE AS SHOWN ON DIAGRAMS.

ALL STRUCTURAL SLAB, BEAM, JOIST AND COLUMN DIMENSIONS ARE ACTUAL DIMENSIONS - NOT MODULAR. PROVIDE 6 X 6 - 6/5 WELDED WIRE FABRIC IN JOIST TOP SLABS.

PROVIDE 6" HEADER W 2 #5 TOP AND BOTTOM WHERE OPENINGS INTERRUPT JOISTS.

FOR SLABS ON GRADE SEE SHEET S-1.



PLAN - BOX OFFICE & CONTROL ROOM

4" CONTROL JOINT IN SLAB SEE DETAIL SHT S-1

ALL CONC. BEAMS ARE CENTERED ON COL. UNLESS SHOWN OTHERWISE BY DETAILS.

IN STRUCTURAL SLABS WITH MECHANICAL OPENINGS 4" OR LARGER, USE BEAMS 6" DEEP X 12" WIDE WITH 3 #5 AT BOTTOM ALONG SHORT SIDES. ALONG LONG SIDES USE 2 #5 BARS AND EXTEND THEM 2'-0" BEYOND CORNERS. ALSO, PLACE 2 #4 X 45° DIAGONAL BARS AT EVERY CORNER.

FOR OTHER OPENINGS PLACE 2 #5 ALONG EACH SIDE OF THE OPENING AND 2 #4 X 45° DIAGONALS AT EVERY CORNER. EXTEND SIDE BARS 2'-0" BEYOND CORNERS.

FIRST FLOOR FRAMING PLAN

FINISHED FLOOR ELEVATION: 1024'-0"

TOP OF ALL ROUGH SLAB (-1/2") FROM FIN. FLR.

TOP OF ALL ROUGH SLAB (-3") FROM FIN. FLR.

SEE SHEET S-7 FOR STAIR OPENINGS & DETAILS

R.S. = ROUGH SLAB

T.S. = TOP OF SLAB

WALTER BUTLER COMPANY
HAARSTEDT LUNDGREN AND ASSOCIATES INC.

ARCHITECTS ST. PAUL, MINN. ENGINEERS ST. PAUL, MINN.

FINE ARTS BUILDING

ST. CLOUD STATE COLLEGE
 151 CLOUD, MINNESOTA

DEPARTMENT OF ADMINISTRATION - STATE OF MINNESOTA
 ST. PAUL, MINNESOTA

A. J. NELSON STATE ARCHITECT

STATE PROJECT NO. 3750

APPROVED BY: PRESIDENT, ST. CLOUD STATE COLLEGE

APPROVED BY: EXECUTIVE DIRECTOR, STATE COLLEGE BOARD

APPROVED BY: COMMISSIONER OF ADMINISTRATION - AN AUTHORIZED SIGNATURE

DATE: 7-16-65

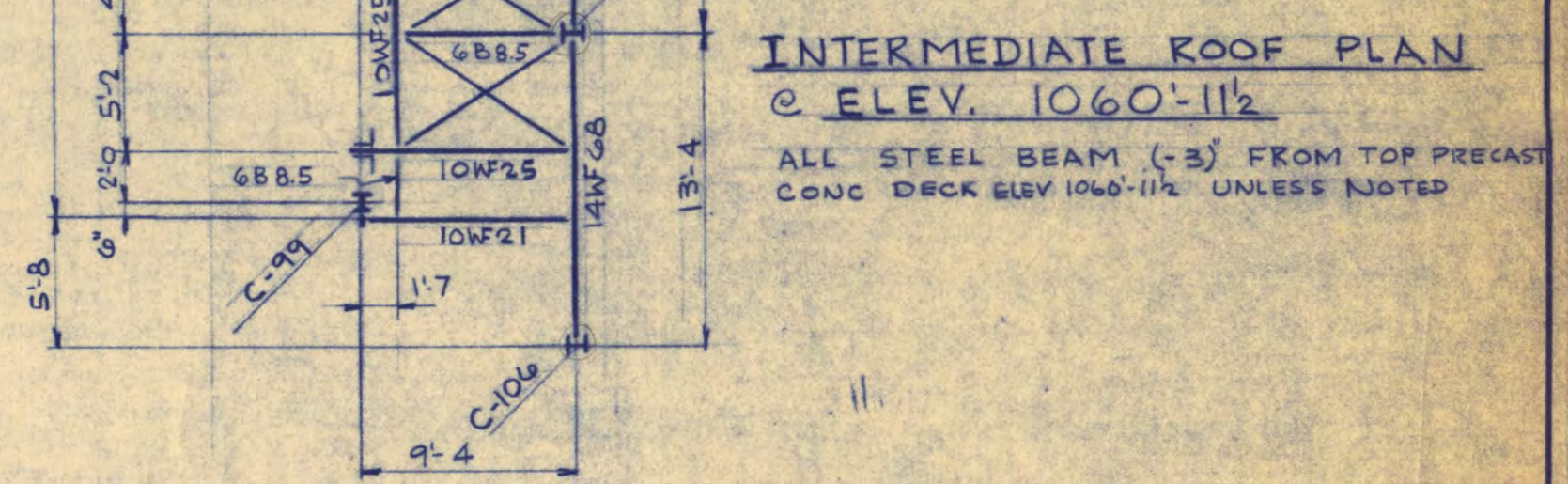
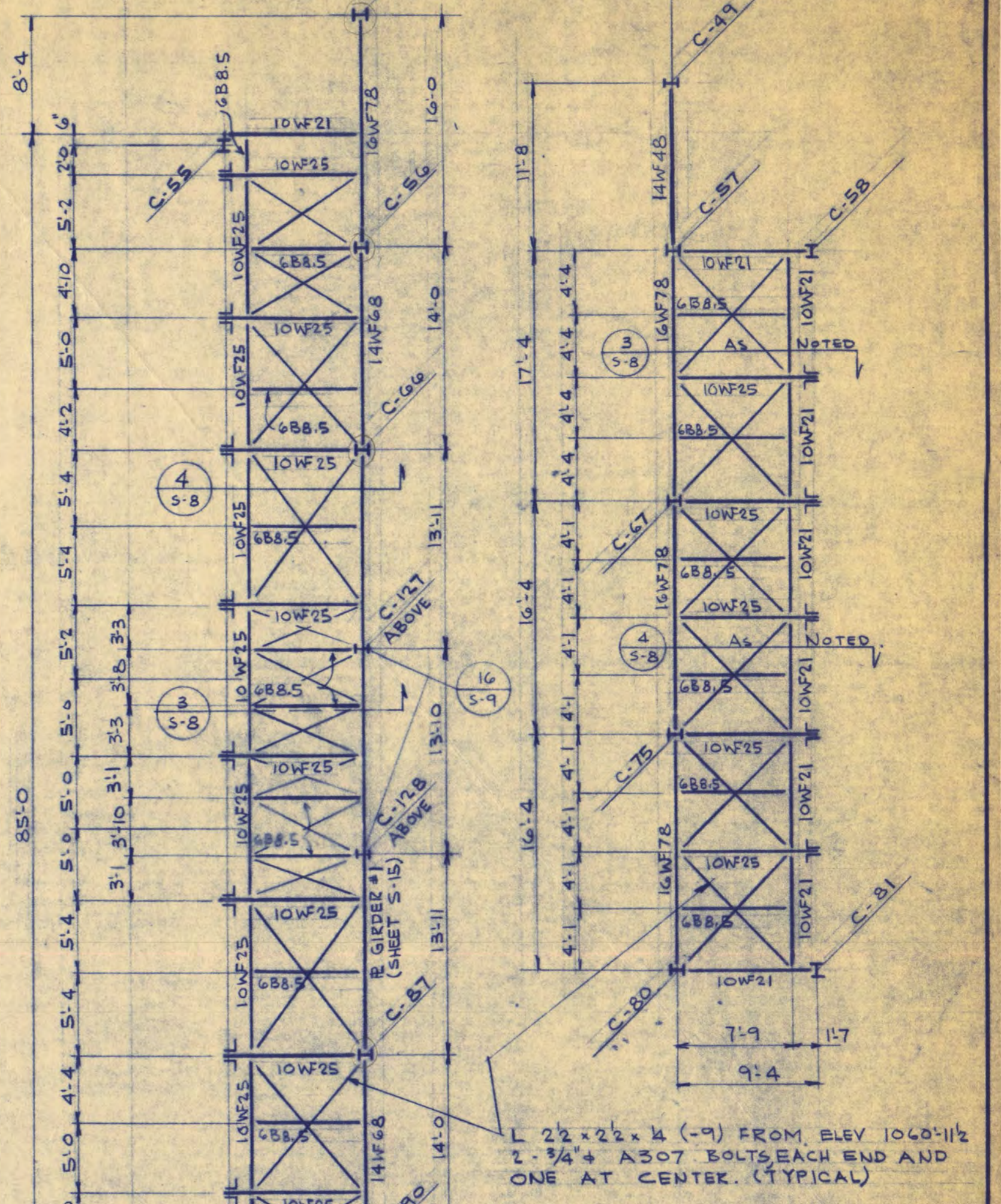
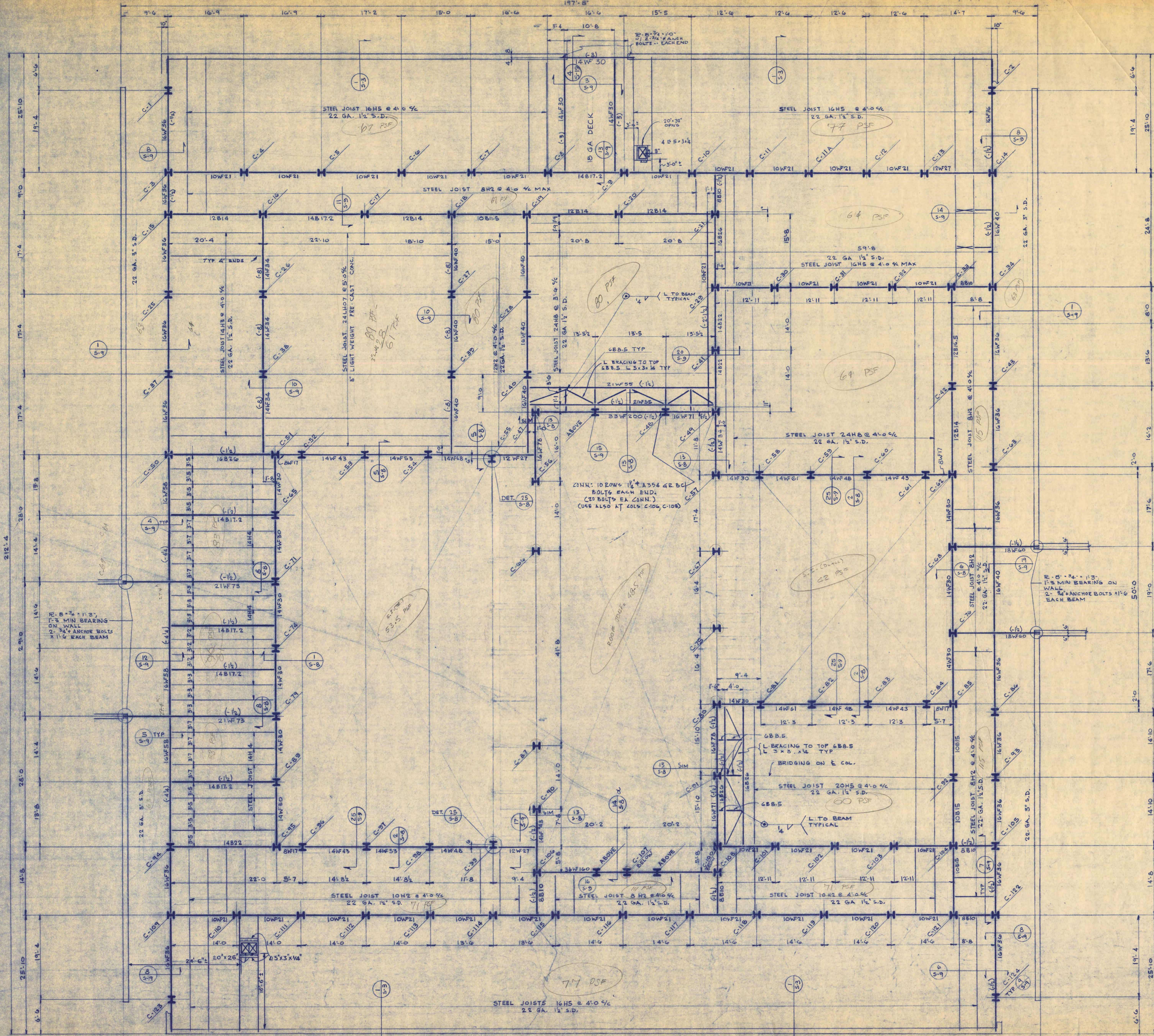
DRAWN BY: B.M.

CHECKED BY: S.B.

SHEET NO. 3-2

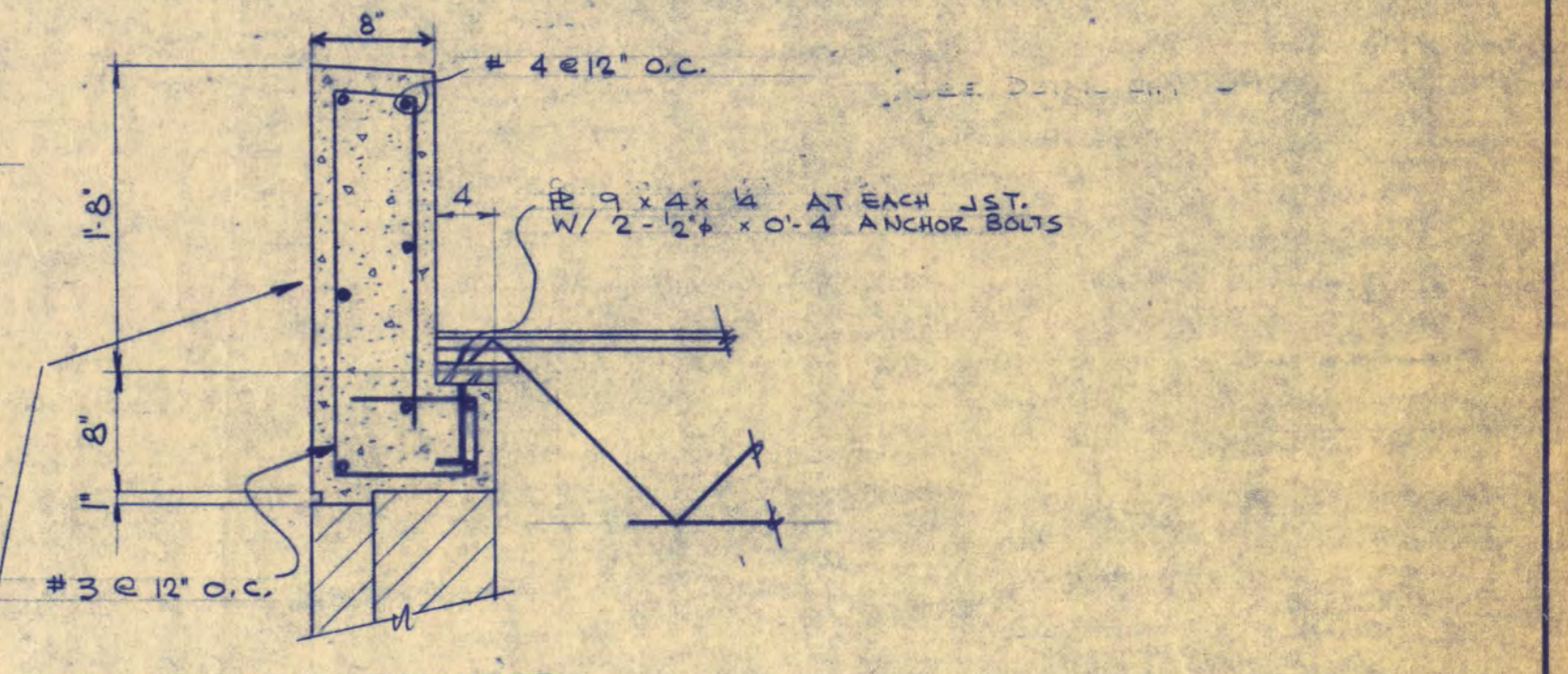
REV. DATE: 5-16-66

STRUCTURAL FIRST FLOOR FRAMING



INTERMEDIATE ROOF PLAN @ ELEV 1060-11/2
 ALL STEEL (-3) FROM TOP PRECAST CONC DECK ELEV 1060-11/2 UNLESS NOTED

NOTES:
 ELEV. TOP OF ROOF DECK 1052-11/2 UNLESS NOTED
 ALL STEEL BEAMS (-4') FROM ELEV. 1052-11/2 UNLESS NOTED (a)
STEEL DECK:
 18 GA. 5' S.D. MIN 5/16" = .73 IN³ MIN I = 1.23 IN⁴
 22 GA. 3' S.D. MIN 5/16" = .38 IN³ MIN I = .66 IN⁴
 22 GA. 1 1/2" S.D. MIN 5/16" = .08 IN³ MIN I = .09 IN⁴
 S.D. = STEEL DECK
 PROVIDE 1ST. LOWER CHORD EXTENDERS ALL JST. AT SUSPENDED CEILING



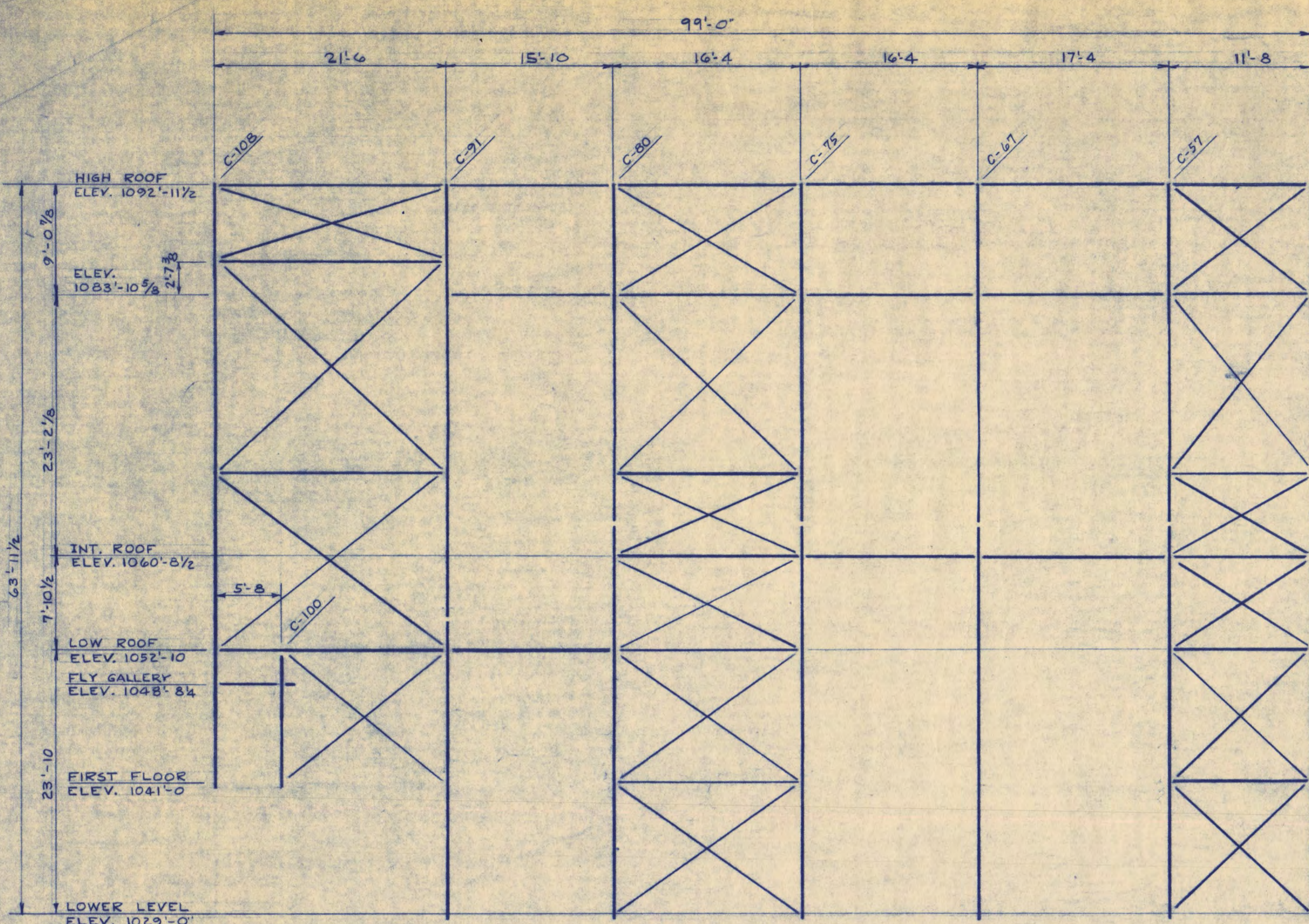
SECTION 1-1
 FOR CONTROL JOINTS SEE DET. 10 FOR LOCATION SEE ARCH ELEVATIONS

LOW ROOF FRAMING PLAN
 SCALE: 1/8" = 1'-0"

WALTER BUTLER COMPANY HAARSTICK LUNDGREN AND ASSOCIATES INC. ARCHITECTS ENGINEERS ST. PAUL MINN.	
FINE ARTS BUILDING ST. CLOUD STATE COLLEGE ST. CLOUD, MINNESOTA	
DEPARTMENT OF ADMINISTRATION - STATE OF MINNESOTA A. J. NELSON STATE ARCHITECT	
STATE PROJECT NO. 3750	APPROVED BY _____ PRESIDENT, ST. CLOUD STATE COLLEGE
COMM. NO. 6401	APPROVED BY _____ EXECUTIVE DIRECTOR, STATE COLLEGE BOARD
DATE 7-16-65	APPROVED BY _____ COMMISSIONER OF ADMINISTRATION AN AUTHORIZED SIGNATURE
DRAWN BY S.M.	I HEREBY CERTIFY THAT THIS DRAWING WAS PREPARED BY ME OR UNDER MY DIRECT SUPERVISION AND THAT I AM A REGISTERED ENGINEER UNDER THE LAWS OF THE STATE OF MINN.
CHECKED BY S.B.	REG. NO.
SHEET NO. 5-3	STRUCTURAL
REV. DATE 5-16-66	LOW ROOF FRAMING PLAN

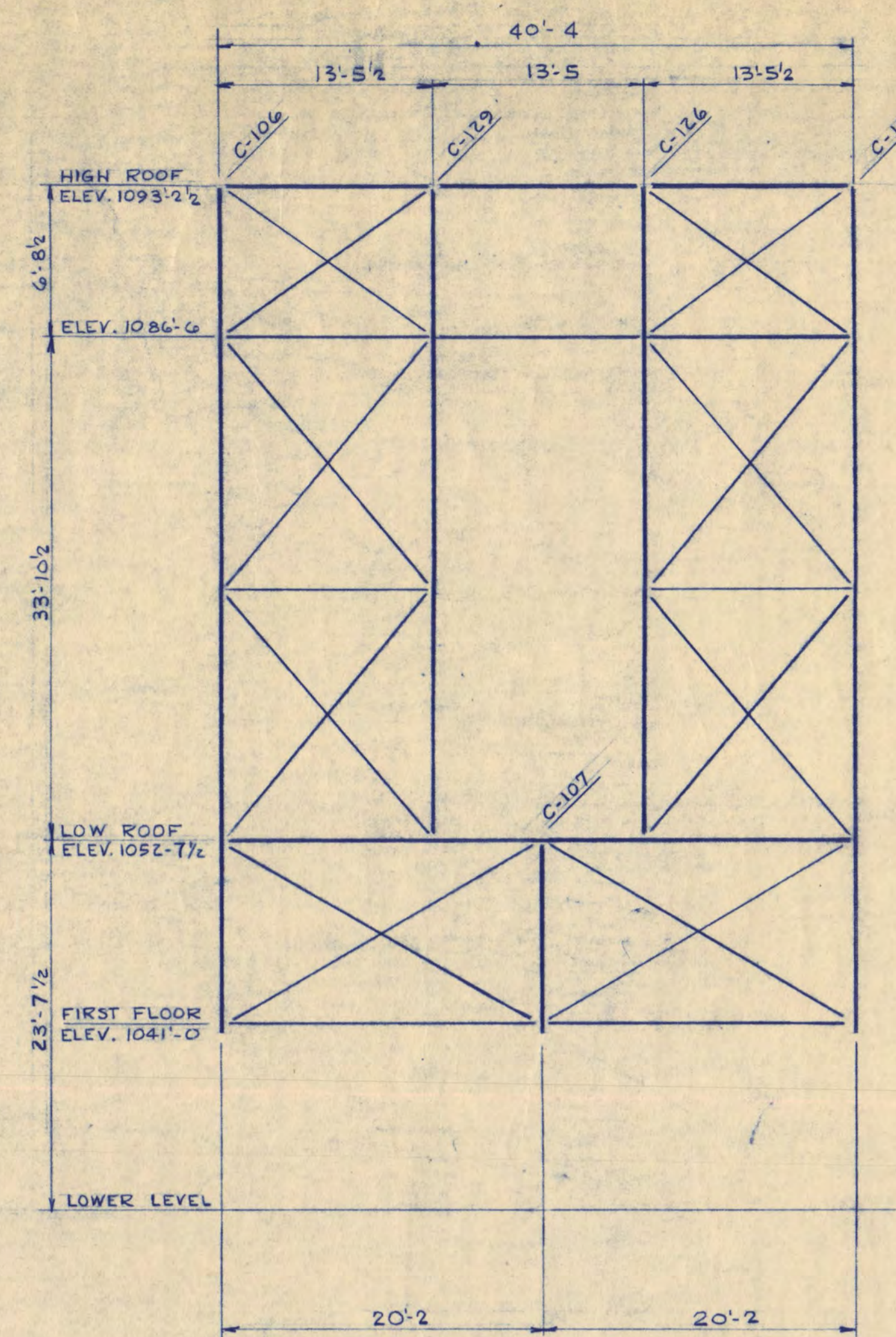
GENERAL STRUCTURAL NOTES

- DESIGN CODES USED
UNIFORM BUILDING CODE, 1964 EDITION; A.C.I. BUILDING CODE (A.C.I. 318-63); A.I.S.C. SPECIFICATION - 6TH EDITION; STEEL JOIST INSTITUTE SPECIFICATIONS.
 - DESIGN STRESSES
CONCRETE - FIRST FLOOR CONCRETE BEAMS, JOISTS, SLABS, AND ENTRIES - 4000 P.S.I., ALL OTHER CONCRETE - 3000 P.S.I.
REINFORCING STEEL: YIELD STRESS = 50,000 P.S.I.
STRUCTURAL STEEL: YIELD STRESS = 36,000 P.S.I.
SOIL PRESSURE: BELOW ELEVATION 1023'-4" = 6000 P.S.F., ABOVE ELEVATION 1023'-4" = 2000 P.S.F.
 - CONNECTIONS
SHOP CONNECTIONS - ALL SHOP CONNECTIONS WILL BE RIVETED OR WELDED.
FIELD CONNECTIONS - ALL STRUCTURAL STEEL CONNECTIONS WILL BE DESIGNED IN ACCORDANCE WITH THE A.I.S.C. MANUAL OF STEEL CONSTRUCTION, 6TH EDITION, AS FRAMED BEAM CONNECTIONS USING 3/4" DIAMETER A-307 BOLTS AS MINIMUM. WHERE REACTIONS (R-) ARE NOTED IN THE FRAMING PLANS, THE CONNECTIONS WILL BE DESIGNED TO CARRY THE SPECIFIED LOAD.
 - FOOTING DOWELS FOR REINFORCED CONCRETE WALLS WILL BE OF THE SAME SIZE AND AT THE SAME SPACINGS AS THE VERTICAL WALL REINFORCING WITH 30 DIAMETER EMBEDMENT.
 - PROVIDE EXTRA REINFORCEMENT AROUND ALL WINDOW AND DOOR OPENINGS IN REINFORCED CONCRETE WALLS. EXCEPT WHERE THE SIZE OF BARS IS SHOWN OTHERWISE PROVIDE 2-#5 EACH SIDE OF OPENING AND EXTENDING 24 INCHES BEYOND THE CORNER OF THE OPENINGS. ADD 2-#4 BARS 3'-0" LONG AS DIAGONAL BARS AT EACH CORNER.
 - CONCRETE COVER ON REINFORCING EXCEPT WHERE NOTED OTHERWISE ON THE DRAWINGS, FOOTINGS - 3" BOTTOM AND 1-1/2" TOP
SLAB ON GRADE - CENTER OF SLAB
PIERS AND COLUMNS - 1-1/2" TO TIES
BEAMS - 1-1/2" TO STIRRUP
SLABS AND JOISTS - 3/4" TOP AND BOTTOM
WALLS - 2" FROM EXTERIOR FACE, 3/4" FROM INTERIOR FACE.
 - WHERE REINFORCING IS SHOWN OR CALLED FOR IN CONCRETE BLOCK WALLS, FILL CELLS CONTAINING REINFORCING SOLID WITH CONCRETE.
 - SEE ARCHITECTURAL PLANS FOR LOCATIONS OF CONCRETE BLOCK WALLS WITH CELLS FILLED WITH SAND.
 - DESIGN LOADS
STAIRS, CORRIDORS, AND LOBBIES 100 P.S.F.
OFFICES 80 P.S.F.
CLASSROOMS 50 P.S.F.
STORAGE SPACE 125 P.S.F.
MECHANICAL SPACE 150 P.S.F.
INCINERATOR AND RECEIVING ROOM 180 P.S.F.
STAGE 125 P.S.F.
WIND PRESSURE 25 P.S.F.
ROOF LOAD 40 P.S.F.
- ALL STEEL SHOWN ON THE STRUCTURAL DRAWINGS IS TO BE CONSIDERED "STRUCTURAL STEEL" EXCEPT WHERE NOTED OTHERWISE.

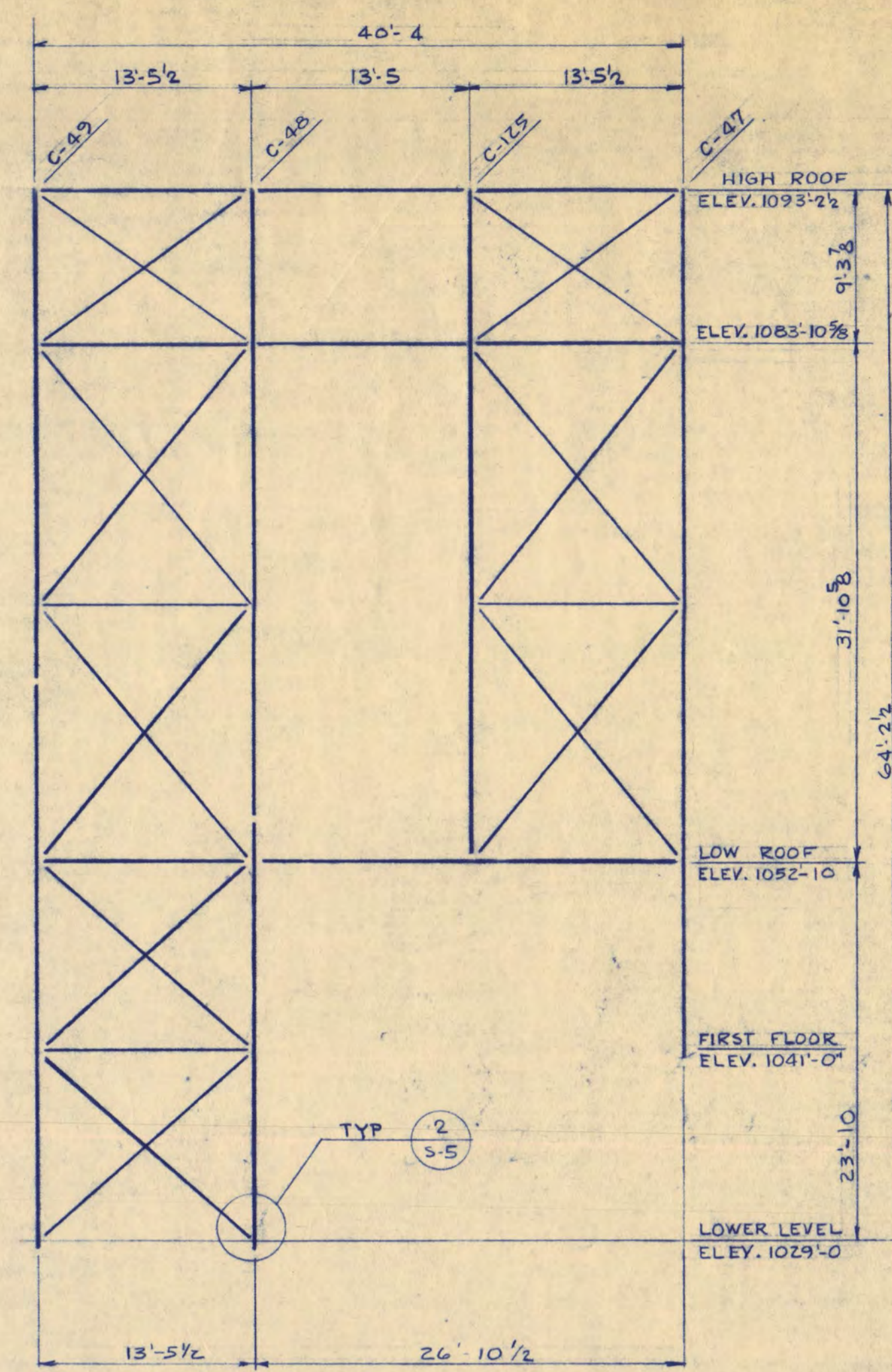


ELEV. AT STEEL BEAMS ARE TOP OF STEEL BEAMS (TYP)

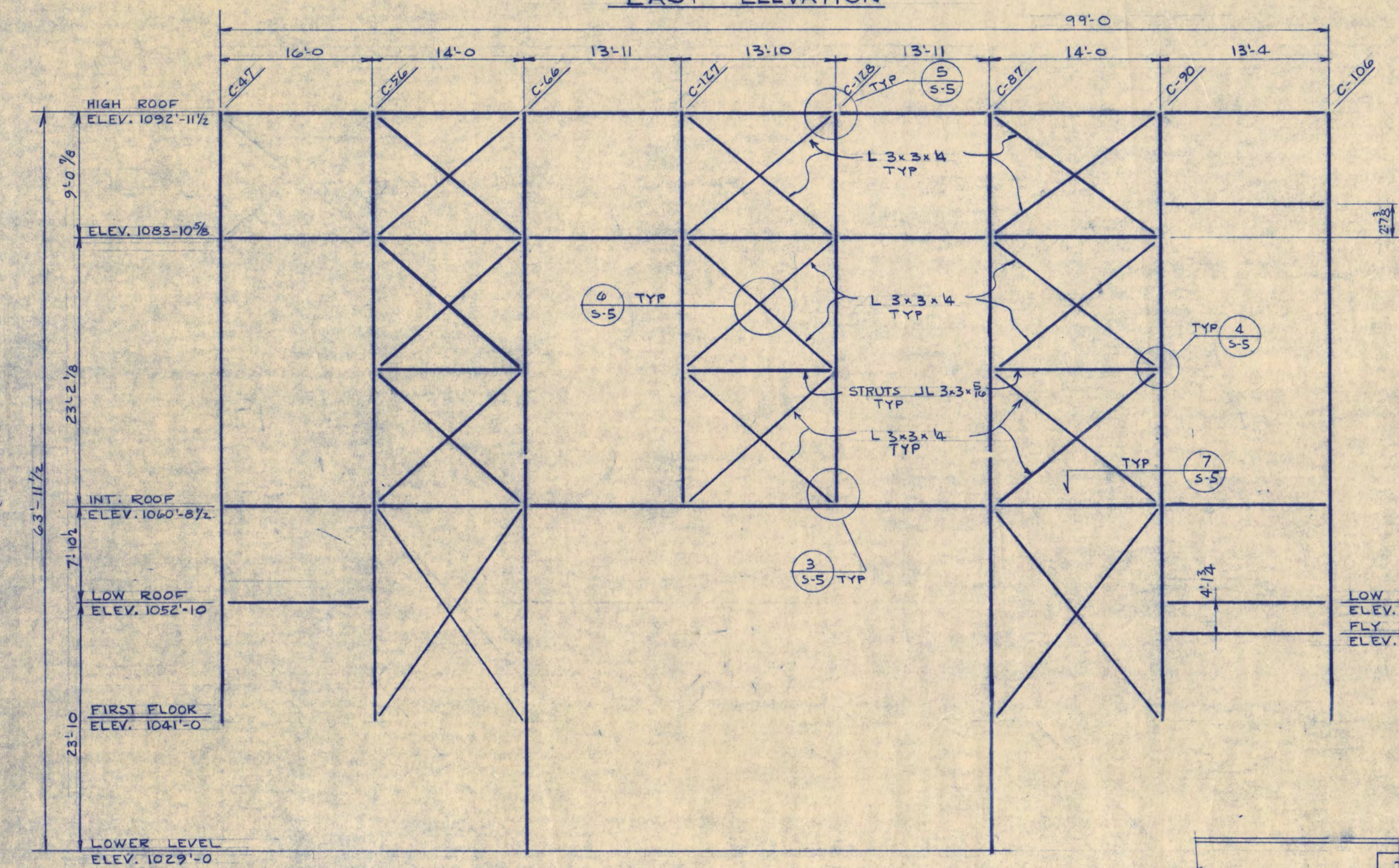
EAST ELEVATION



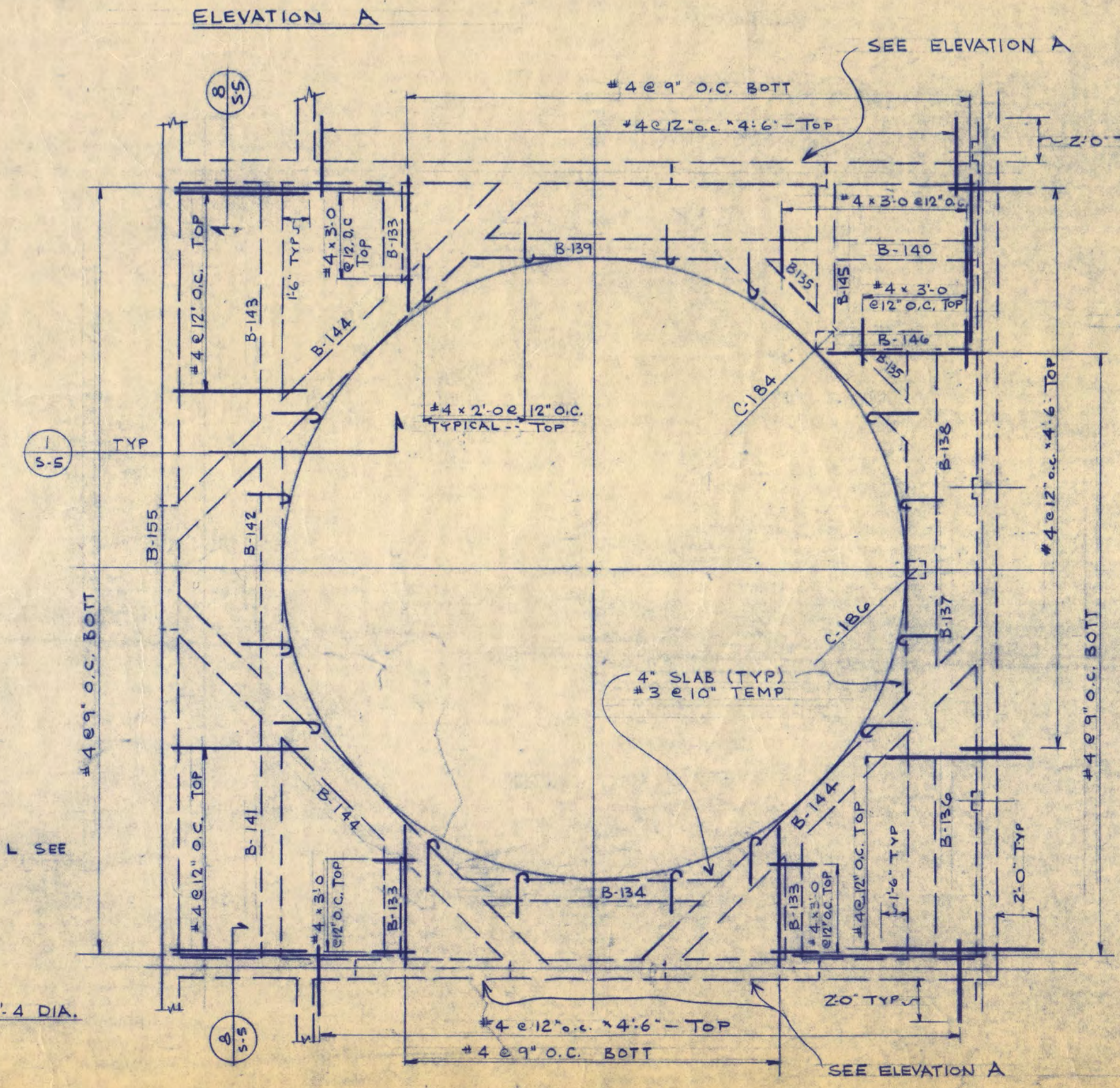
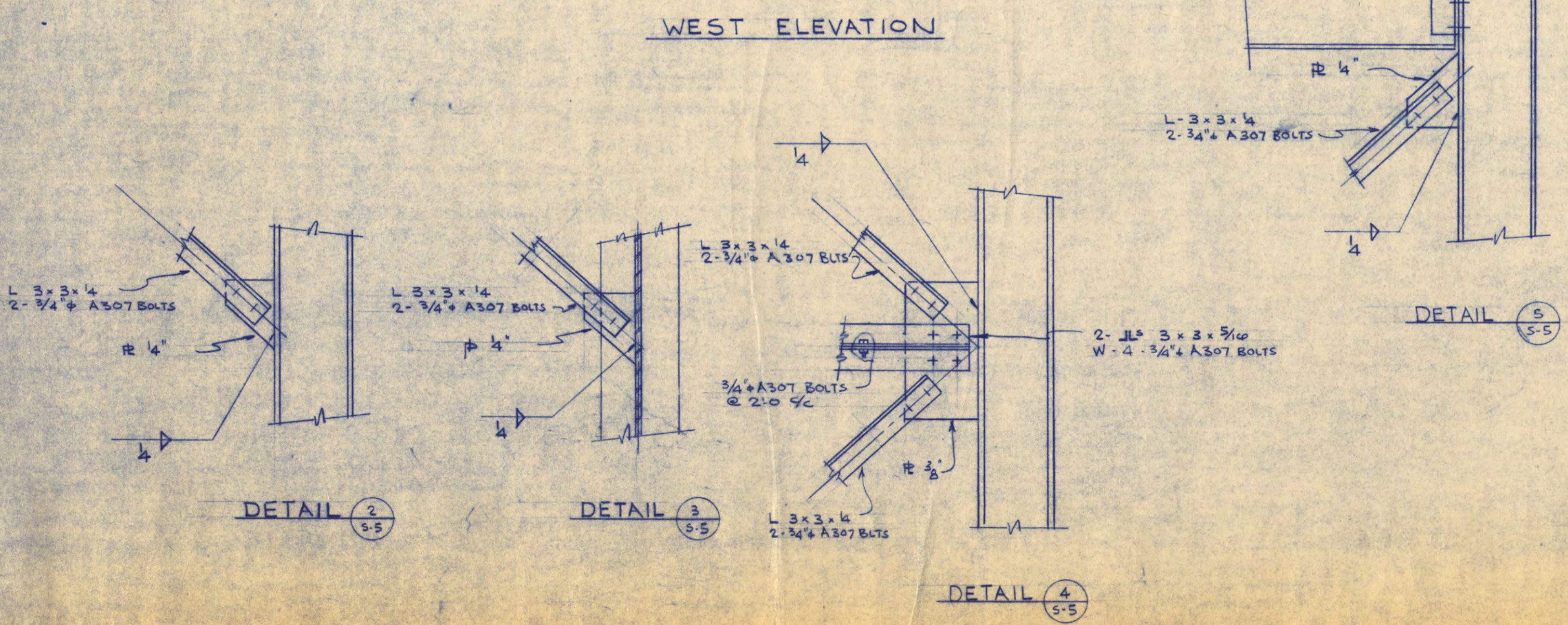
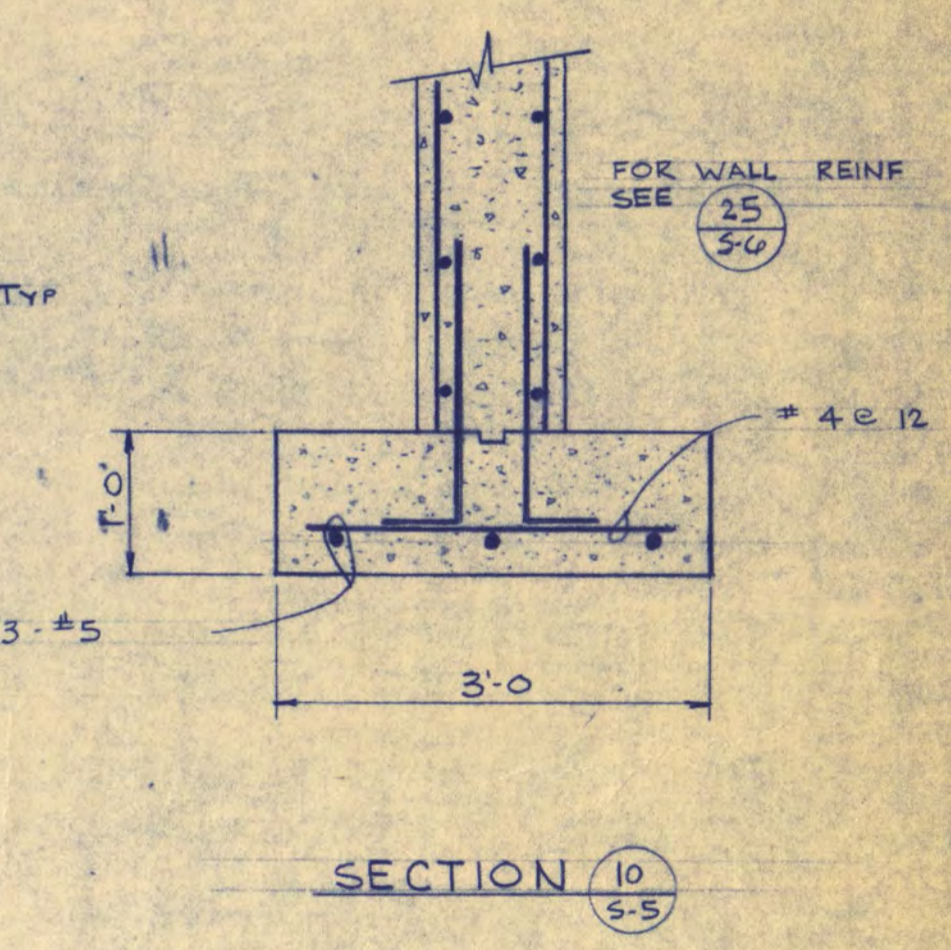
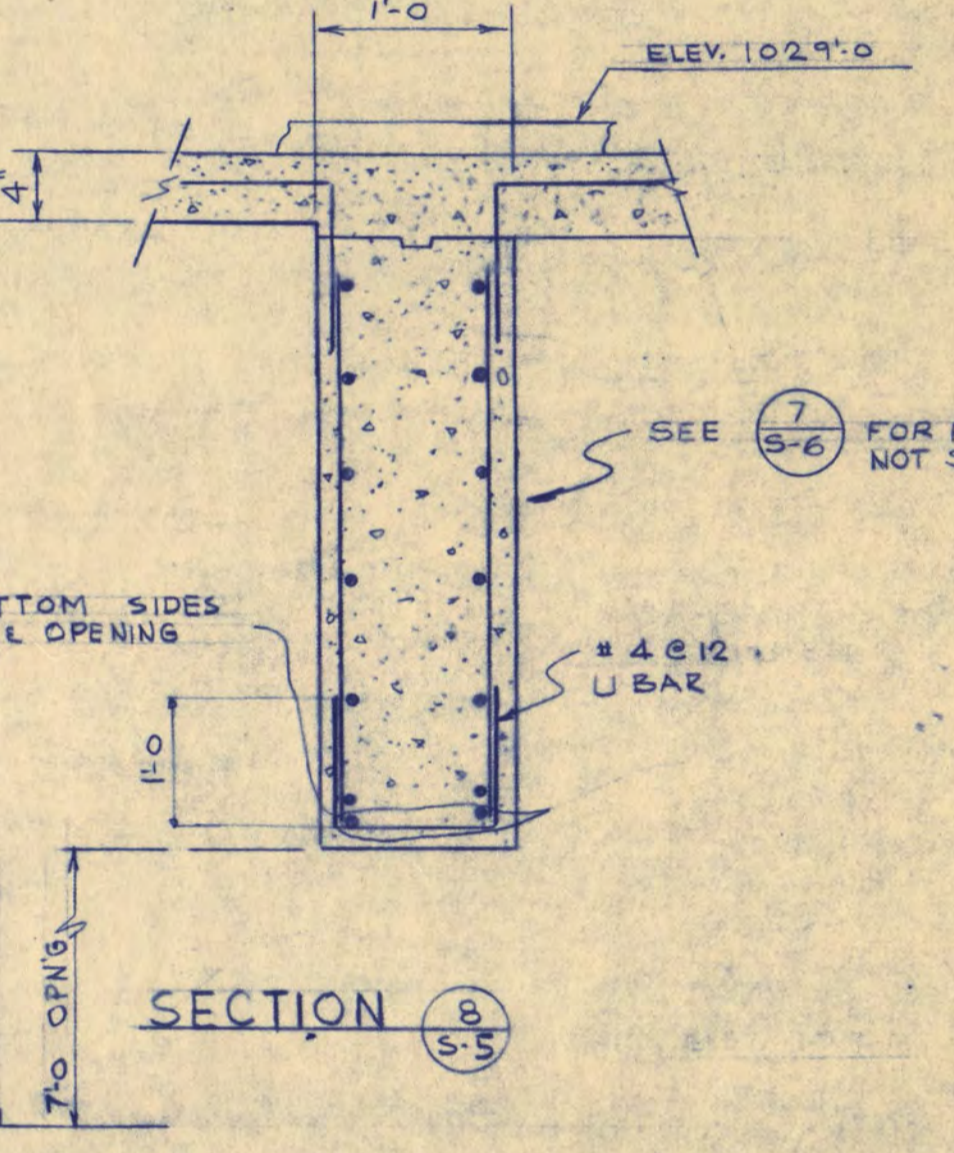
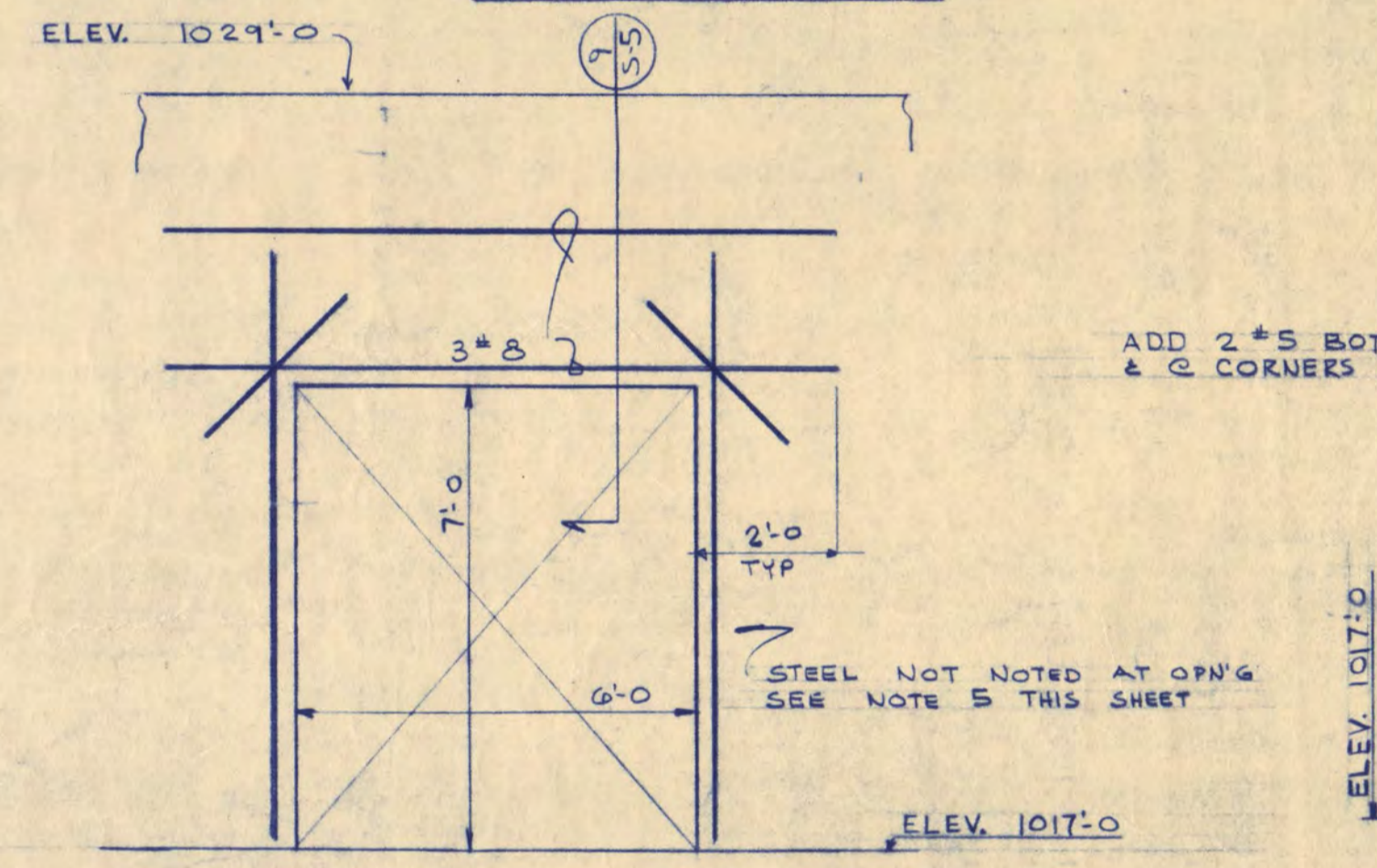
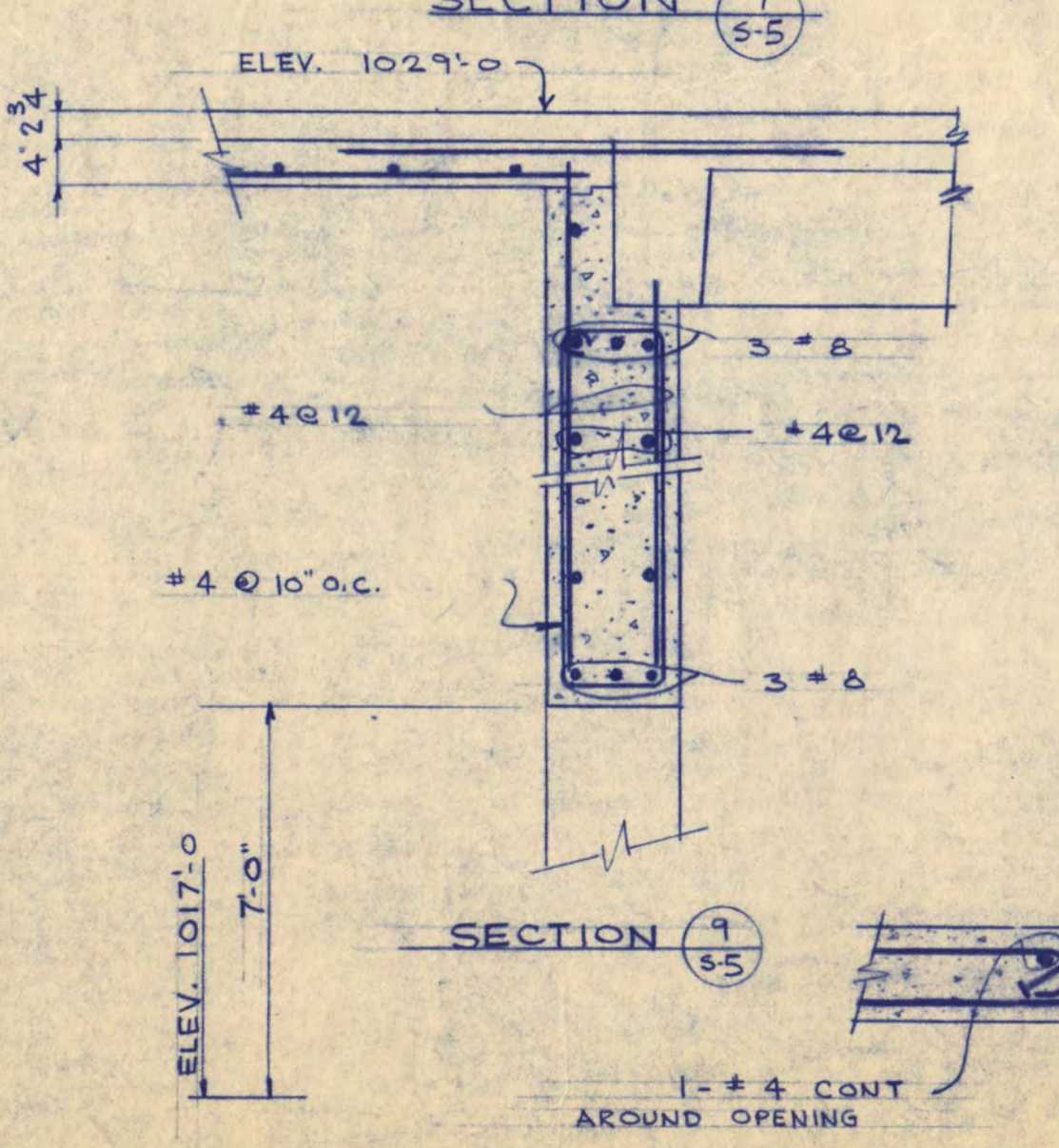
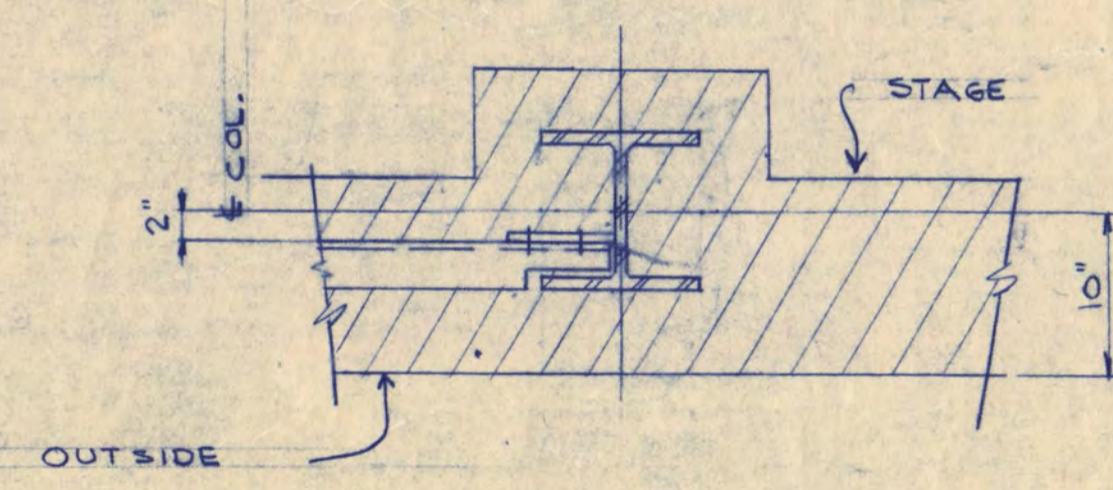
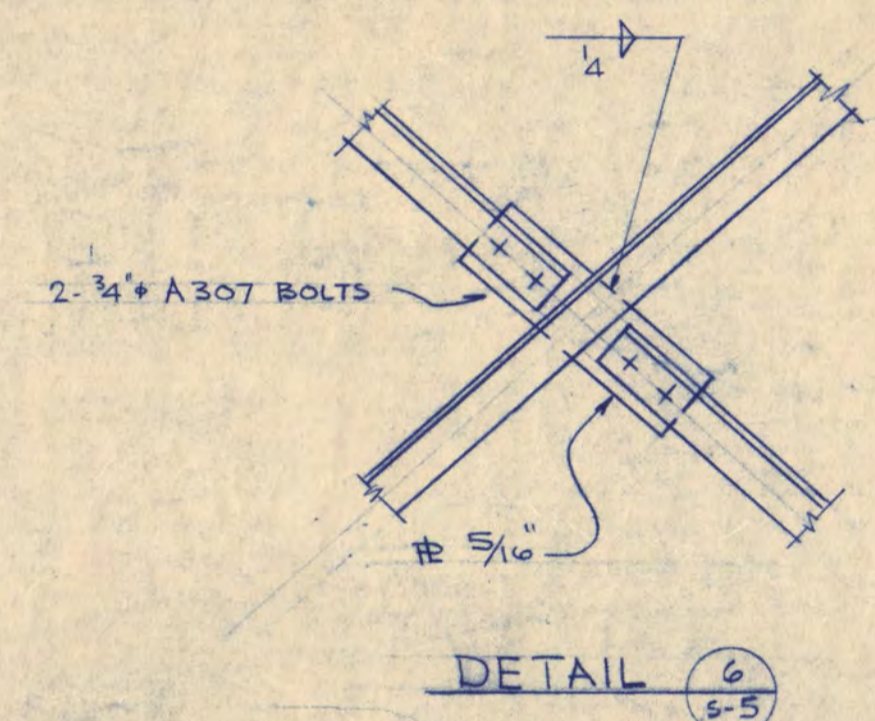
SOUTH ELEVATION



NORTH ELEVATION



WEST ELEVATION



4" CONCRETE SLAB AT ROTATING STAGE ELEV. 1028'-9 1/4"

FOR DIMENSIONS SEE SHEET S-2

WALTER BUTLER COMPANY
HAARSTICK LUNDGREN AND ASSOCIATES INC.
ARCHITECTS ENGINEERS
ST. PAUL MINN.

FINE ARTS BUILDING
ST. CLOUD STATE COLLEGE
ST. CLOUD, MINNESOTA

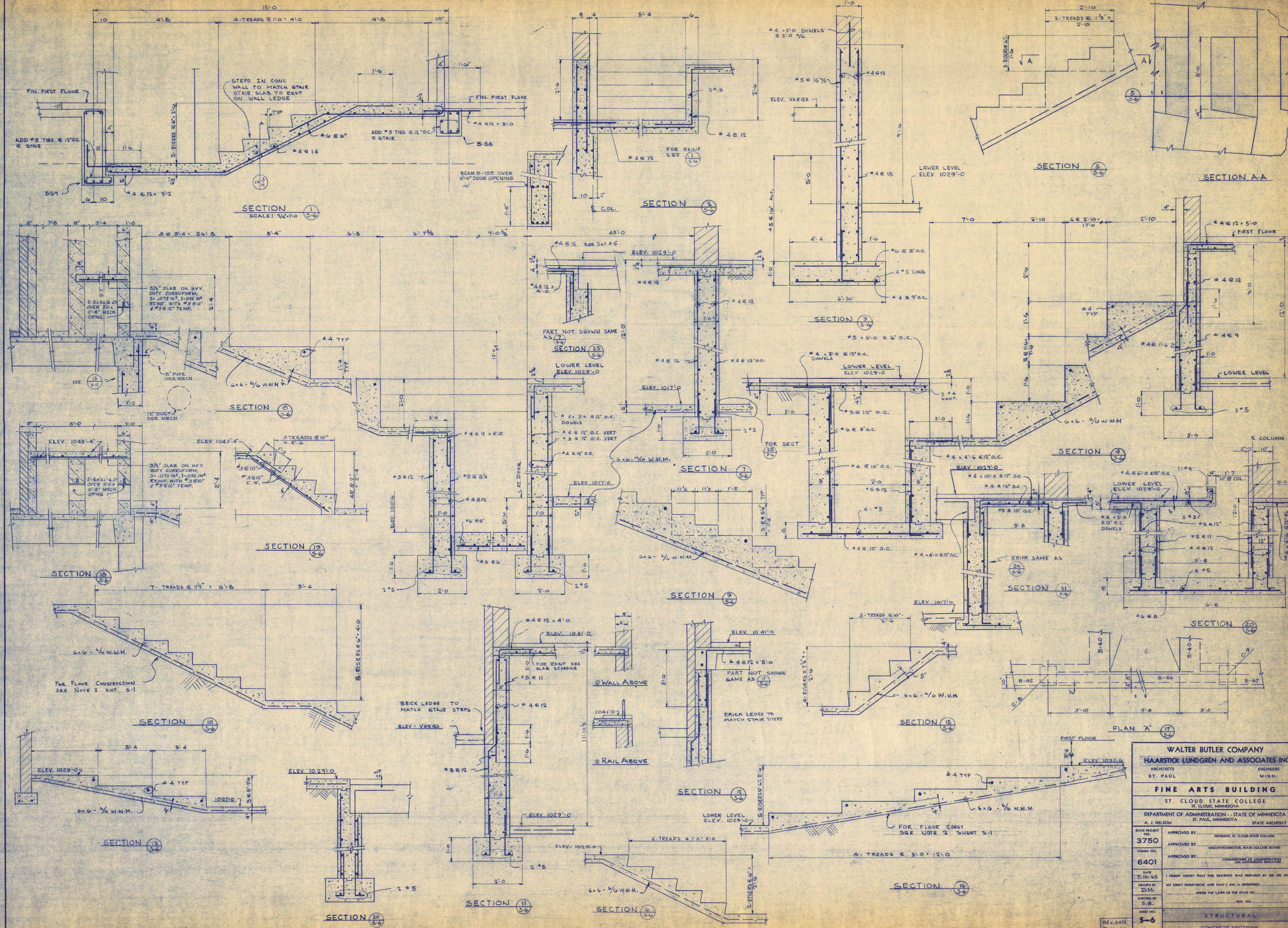
DEPARTMENT OF ADMINISTRATION - STATE OF MINNESOTA
ST. PAUL, MINNESOTA

A. J. NELSON STATE ARCHITECT

STATE PROJECT NO. 3750
APPROVED BY: _____ PRESIDENT, ST. CLOUD STATE COLLEGE
DATE: 7-16-65
DRAWN BY: D.M.
CHECKED BY: S.B.
SHEET NO. 5-5
REV. DATE: 8-16-66

1 HEREBY CERTIFY THAT THIS DRAWING WAS PREPARED BY ME OR UNDER MY DIRECT SUPERVISION AND THAT I AM A REGISTERED ARCHITECT UNDER THE LAWS OF THE STATE OF MINNESOTA.

STRUCTURAL
HIGH ROOF CROSS BRACING



WALTER BUTLER COMPANY
HAARSTICK LUNDGREN AND ASSOCIATES INC.
 ARCHITECTS ST. PAUL ENGINEERS MINN.
FINE ARTS BUILDING
 ST. CLOUD STATE COLLEGE
 ST. CLOUD, MINNESOTA
 DEPARTMENT OF ADMINISTRATION - STATE OF MINNESOTA
 ST. PAUL, MINNESOTA
 A. J. NELSON STATE ARCHITECT

STATE PROJECT NO.	3750	APPROVED BY:	PRESIDENT, ST. CLOUD STATE COLLEGE
CONTRACT NO.	6401	APPROVED BY:	EXECUTIVE DIRECTOR, STATE COLLEGE BOARD
DATE	7-16-65	APPROVED BY:	COMMISSIONER OF ADMINISTRATION AN AUTHORIZED SIGNATURE
DRAWN BY	D.M.	I HEREBY CERTIFY THAT THIS DRAWING WAS PREPARED BY ME OR UNDER MY DIRECT SUPERVISION AND THAT I AM A REGISTERED ARCHITECT UNDER THE LAWS OF THE STATE OF MINNESOTA.	
CHECKED BY	S.B.	REV. DATE	5-16-66
SHEET NO.	5-6	OF 17 SHEETS	
STRUCTURAL		CONCRETE SECTIONS	