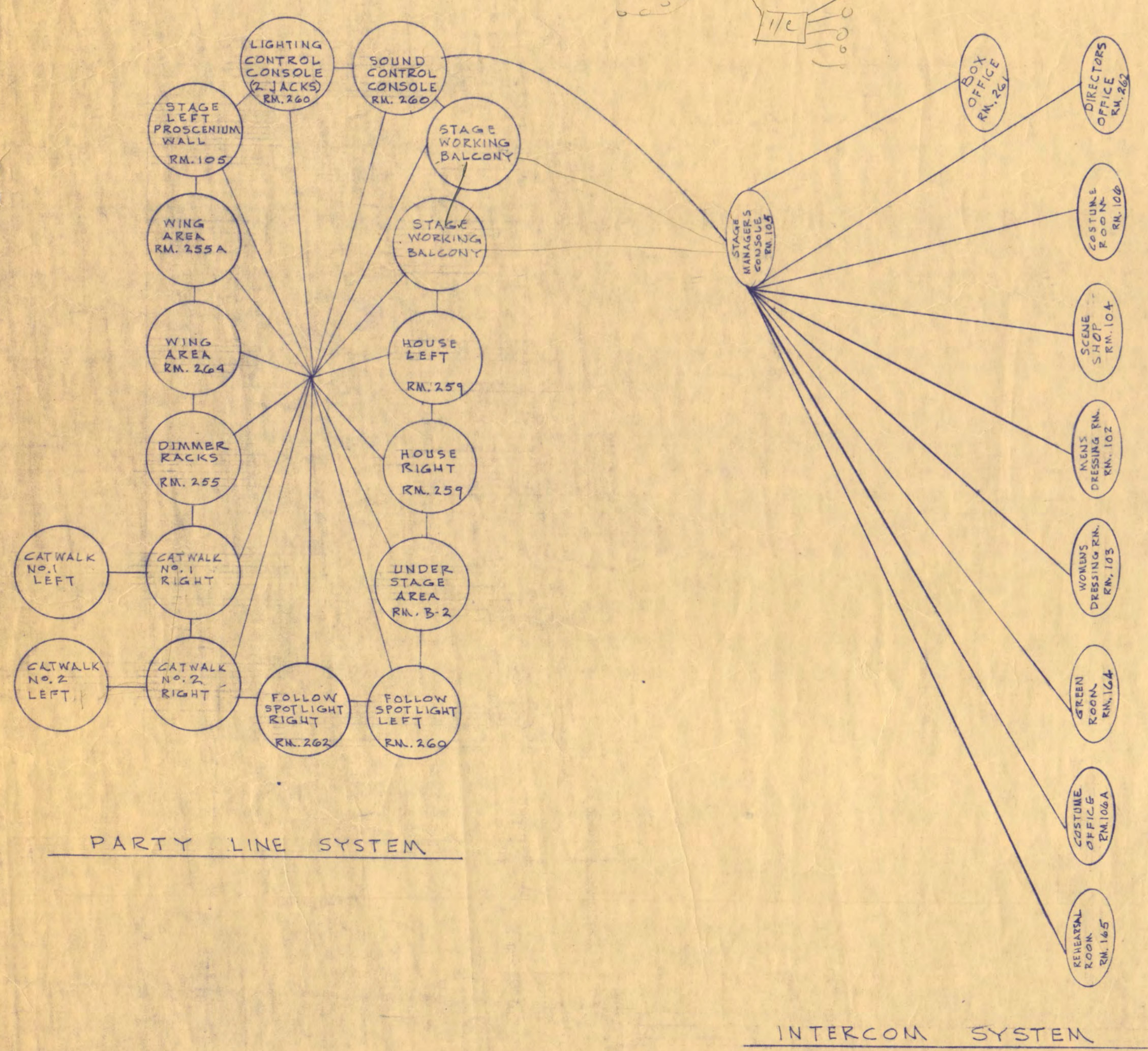


NOTE: SEE SPEC. FOR COMPLETE DESCRIPTION

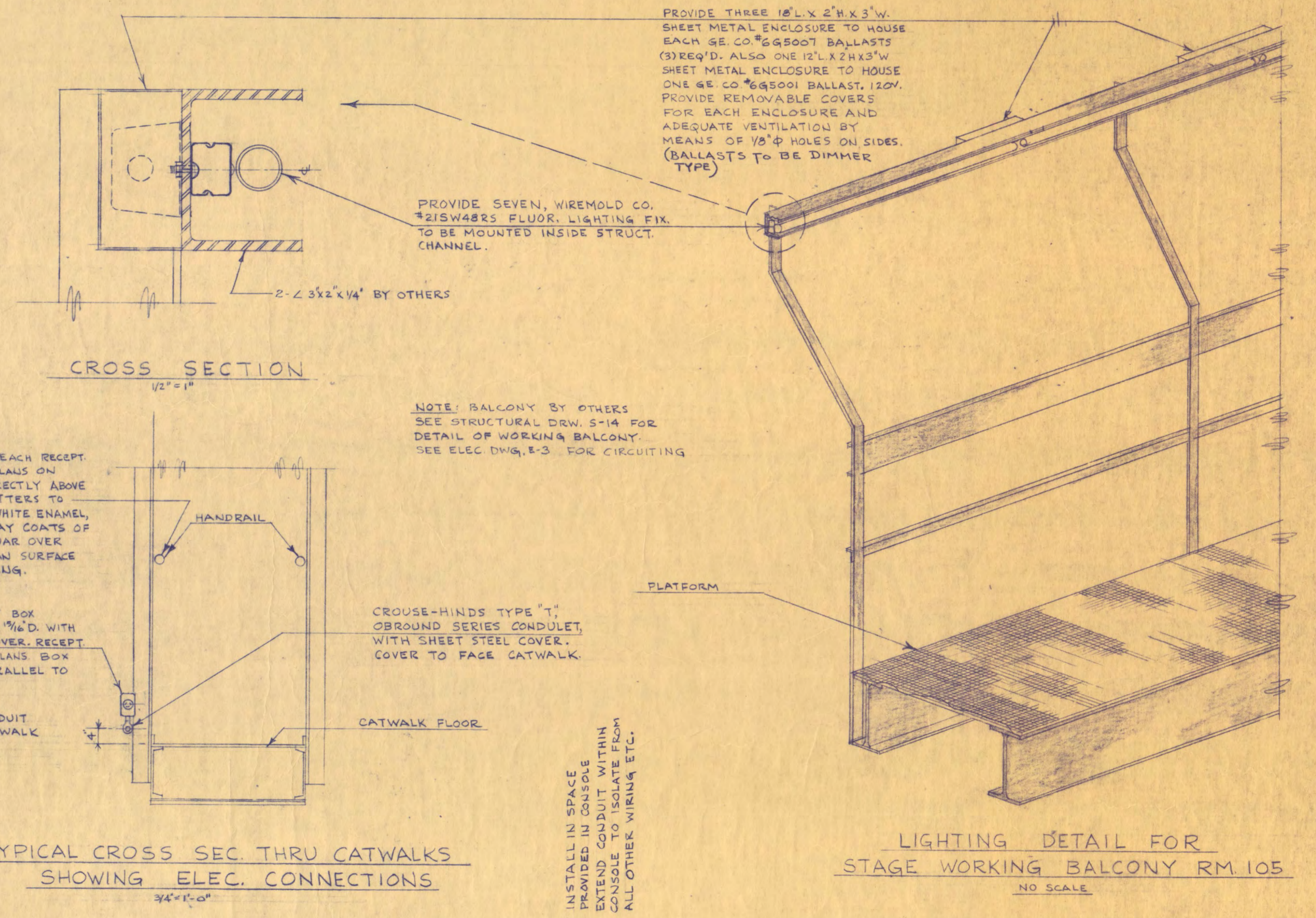
DIMMER FOR DRAMA REHEARSAL HALL RM.# 165
DIMMER LOCATED IN ROOM # 269
 NO SCALE



PARTY LINE SYSTEM

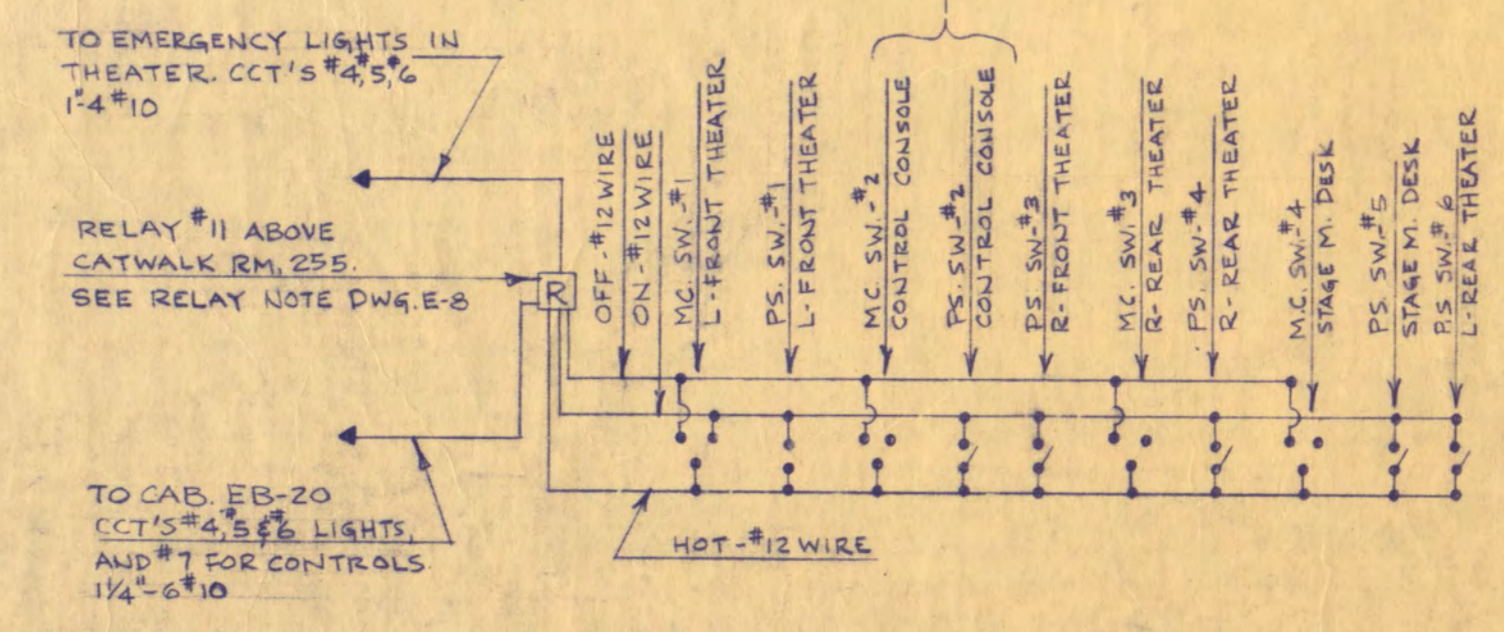
INTERCOM SYSTEM

SCHEMATIC DIAGRAM OF STAGE MANAGERS PARTY LINE AND INTERCOM SYSTEM
 NO SCALE



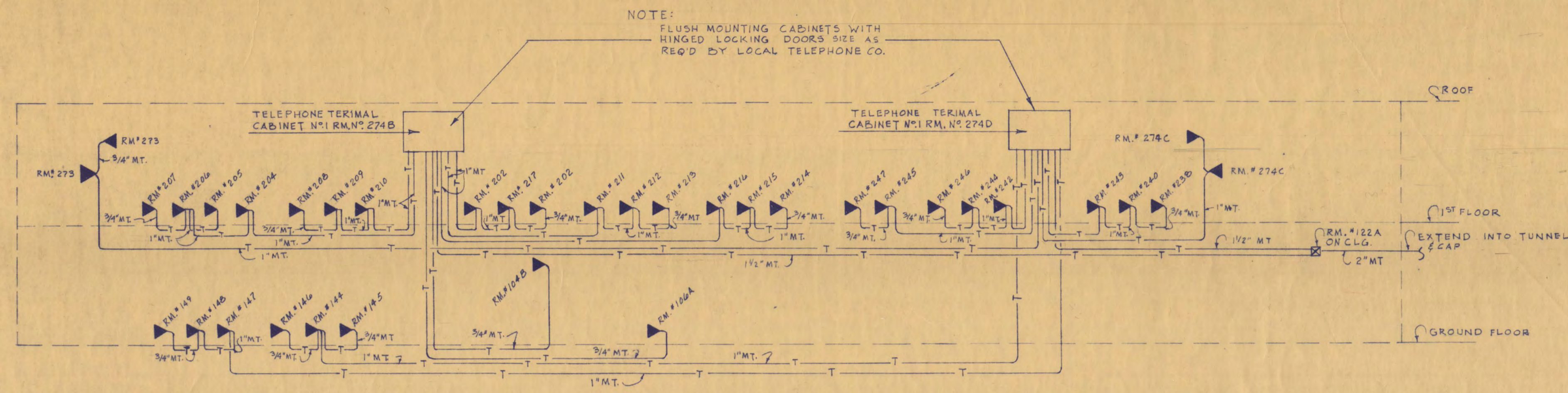
TYPICAL CROSS SEC. THRU CATWALKS SHOWING ELEC. CONNECTIONS
 NO SCALE

LIGHTING DETAIL FOR STAGE WORKING BALCONY RM. 105
 NO SCALE

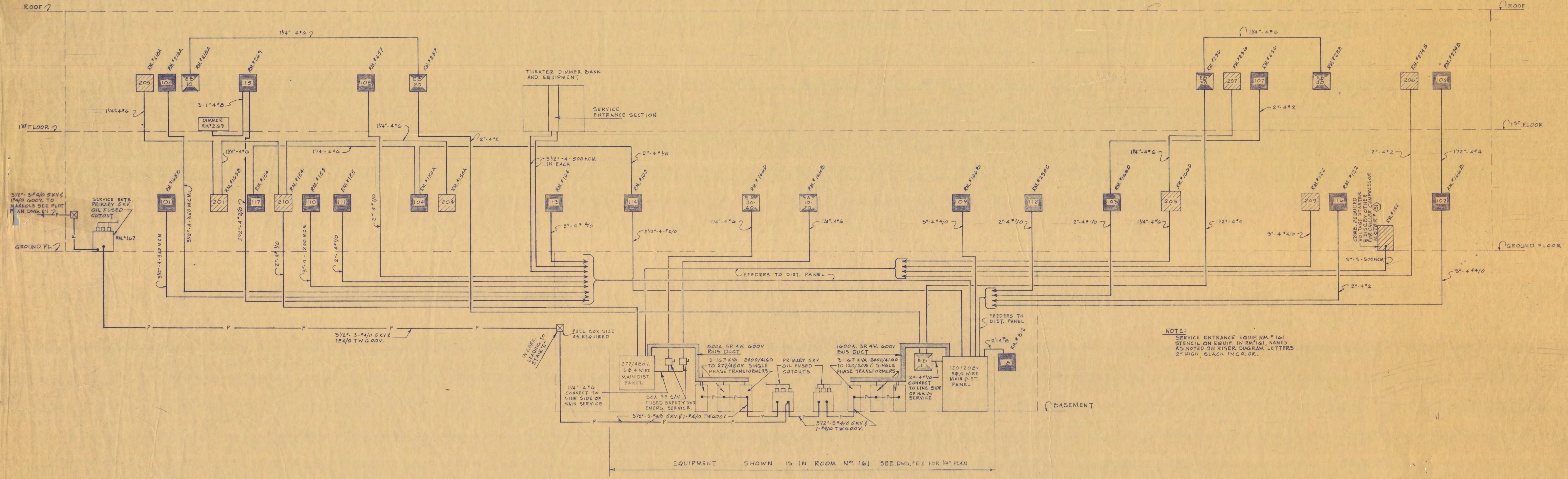


SCHEMATIC WIRING DIAGRAM FOR EMERGENCY LIGHT SWITCHING IN MAIN THEATER RM. 259
 NO SCALE

WALTER BUTLER COMPANY	
HAARSTICK LUNDGREN AND ASSOCIATES INC.	
ARCHITECTS ST. PAUL	ENGINEERS MINN.
FINE ARTS BUILDING	
ST. CLOUD STATE COLLEGE ST. CLOUD, MINNESOTA	
DEPARTMENT OF ADMINISTRATION - STATE OF MINNESOTA A. J. NELSON STATE ARCHITECT	
STATE PROJECT NO. 3750	APPROVED BY: _____ PRESIDENT, ST. CLOUD STATE COLLEGE
COMM. NO.	APPROVED BY: _____ EXECUTIVE DIRECTOR, STATE COLLEGE BOARD
6401	APPROVED BY: _____ COMMISSIONER OF ADMINISTRATION AN AUTHORIZED SIGNATURE
DATE JUNE 15, 1965	I HEREBY CERTIFY THAT THIS DRAWING WAS PREPARED BY ME OR UNDER MY DIRECT SUPERVISION (AND THAT I AM A REGISTERED ENGINEER UNDER THE LAWS OF THE STATE OF MINNESOTA)
DRAWN BY J.P.K.	REG. NO. _____
CHECKED BY R.H.P.H.L.	REG. NO. _____
FEDERAL GRANT NO. MINN. 4-1884	ELECTRICAL
REV. DATE 5-16-66	DETAILS
OF SHEETS	

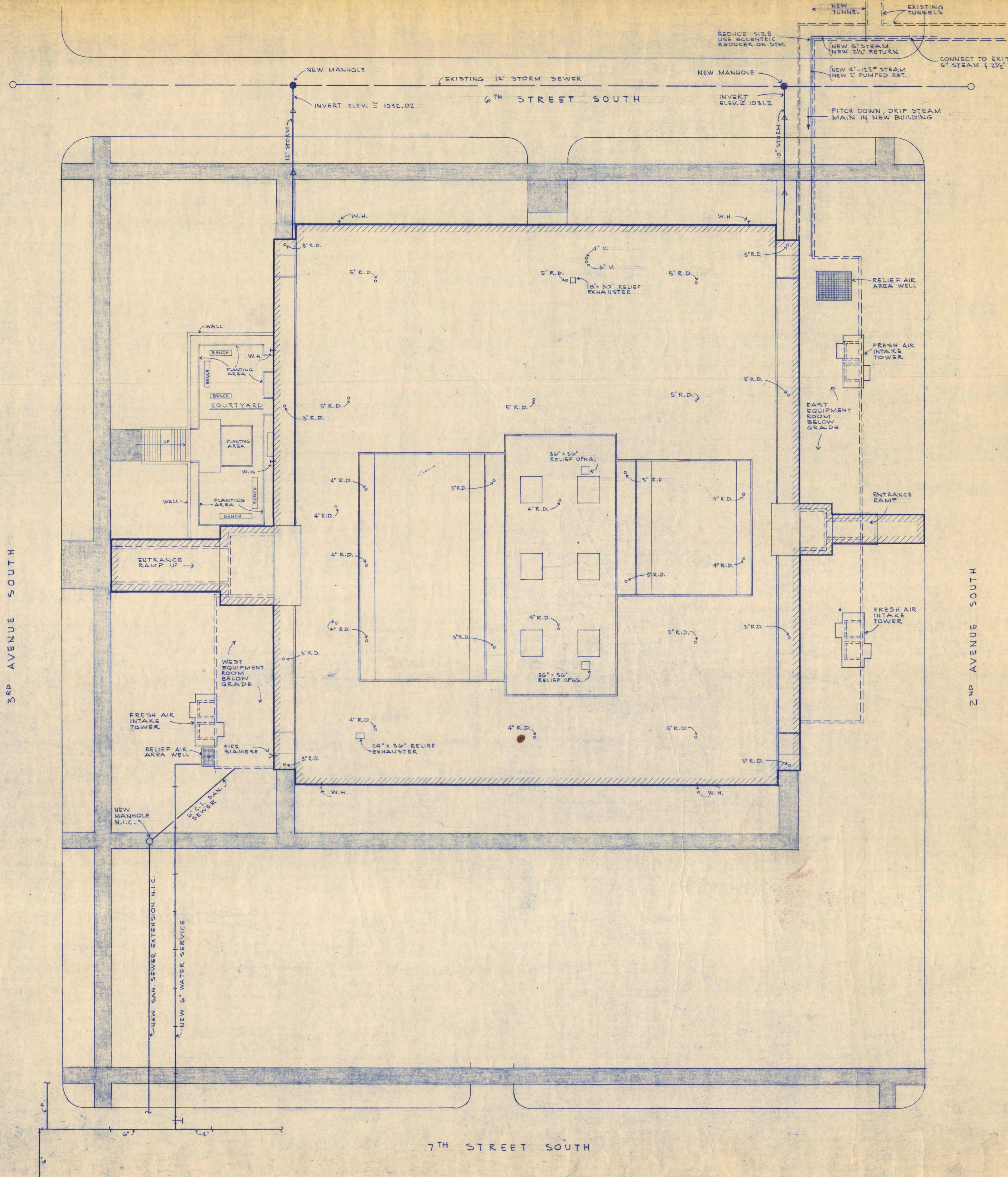


TELEPHONE SYSTEM RISER DIAGRAM
NO SCALE



LIGHTING & POWER RISER DIAGRAM
NO SCALE

WALTER BUTLER COMPANY	
HAARSTICK LUNDGREN AND ASSOCIATES INC.	
ARCHITECTS ST. PAUL	ENGINEERS MINN.
FINE ARTS BUILDING	
ST. CLOUD STATE COLLEGE ST. CLOUD, MINNESOTA	
DEPARTMENT OF ADMINISTRATION - STATE OF MINNESOTA ST. PAUL, MINNESOTA	
A. J. NELSON	STATE ARCHITECT
STATE PROJECT NO. 3750	APPROVED BY: _____ PRESIDENT, ST. CLOUD STATE COLLEGE
COMM. NO.	APPROVED BY: _____ EXECUTIVE DIRECTOR, STATE COLLEGE BOARD
6401	APPROVED BY: _____ COMMISSIONER OF ADMINISTRATION AN AUTHORIZED SIGNATURE
DATE JUNE 15, 1964	I HEREBY CERTIFY THAT THIS DRAWING WAS PREPARED BY ME OR UNDER MY DIRECT SUPERVISION AND THAT I AM A REGISTERED ELECTRICIAN UNDER THE LAWS OF THE STATE OF MINNESOTA.
DRAWN BY J.E.J.K.	
CHECKED BY C.E.T.	
SHEET NO. E-10	
FEDERAL GRANT NO. MINN. 4-7824	REV. DATE 5-14-64
ELECTRICAL RISER DIAGRAM	

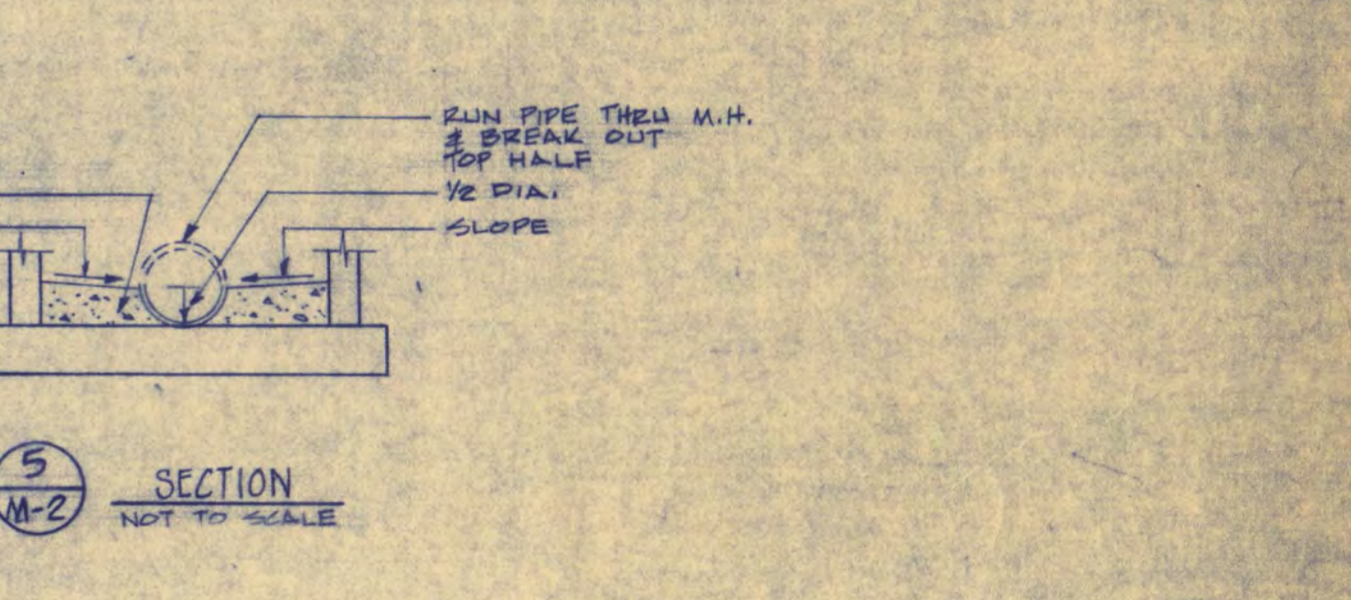
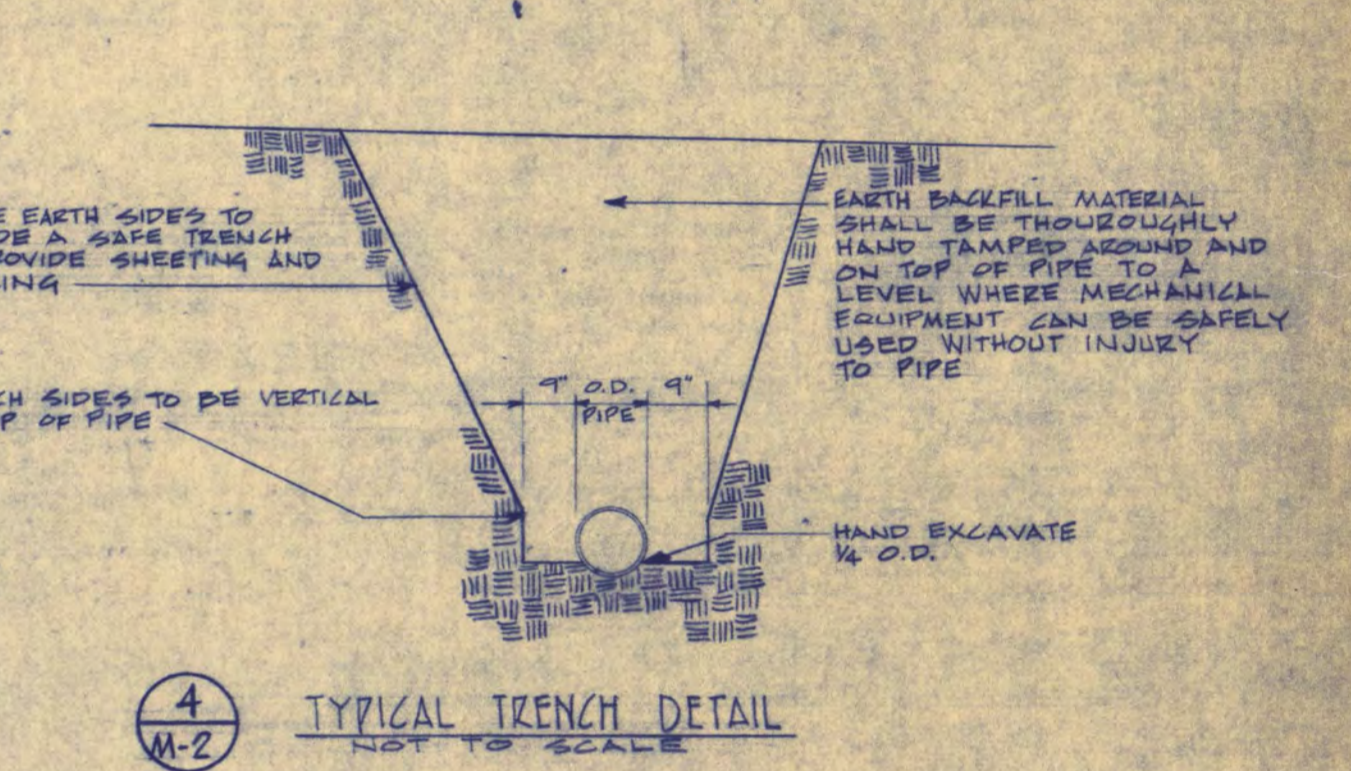
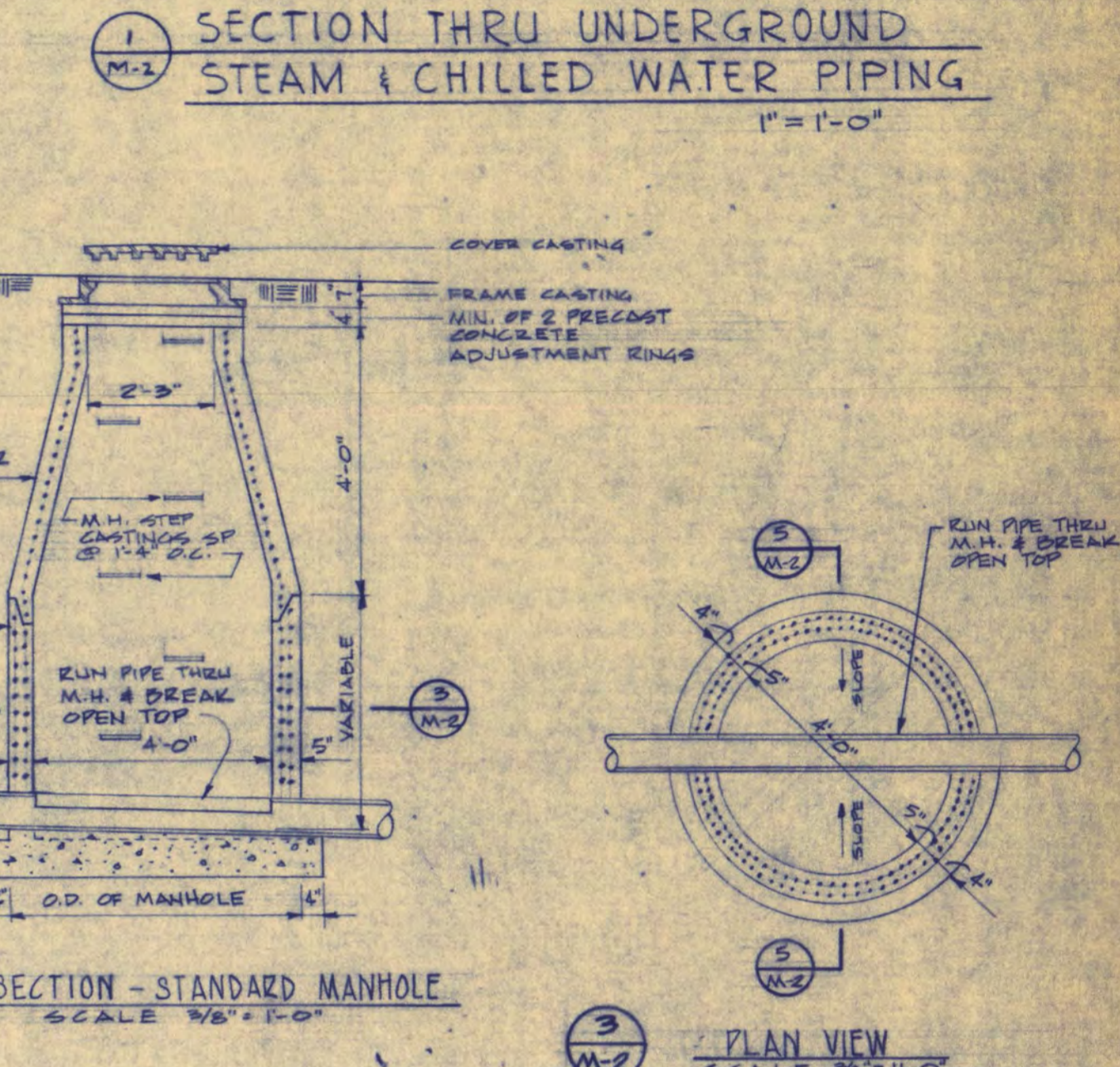
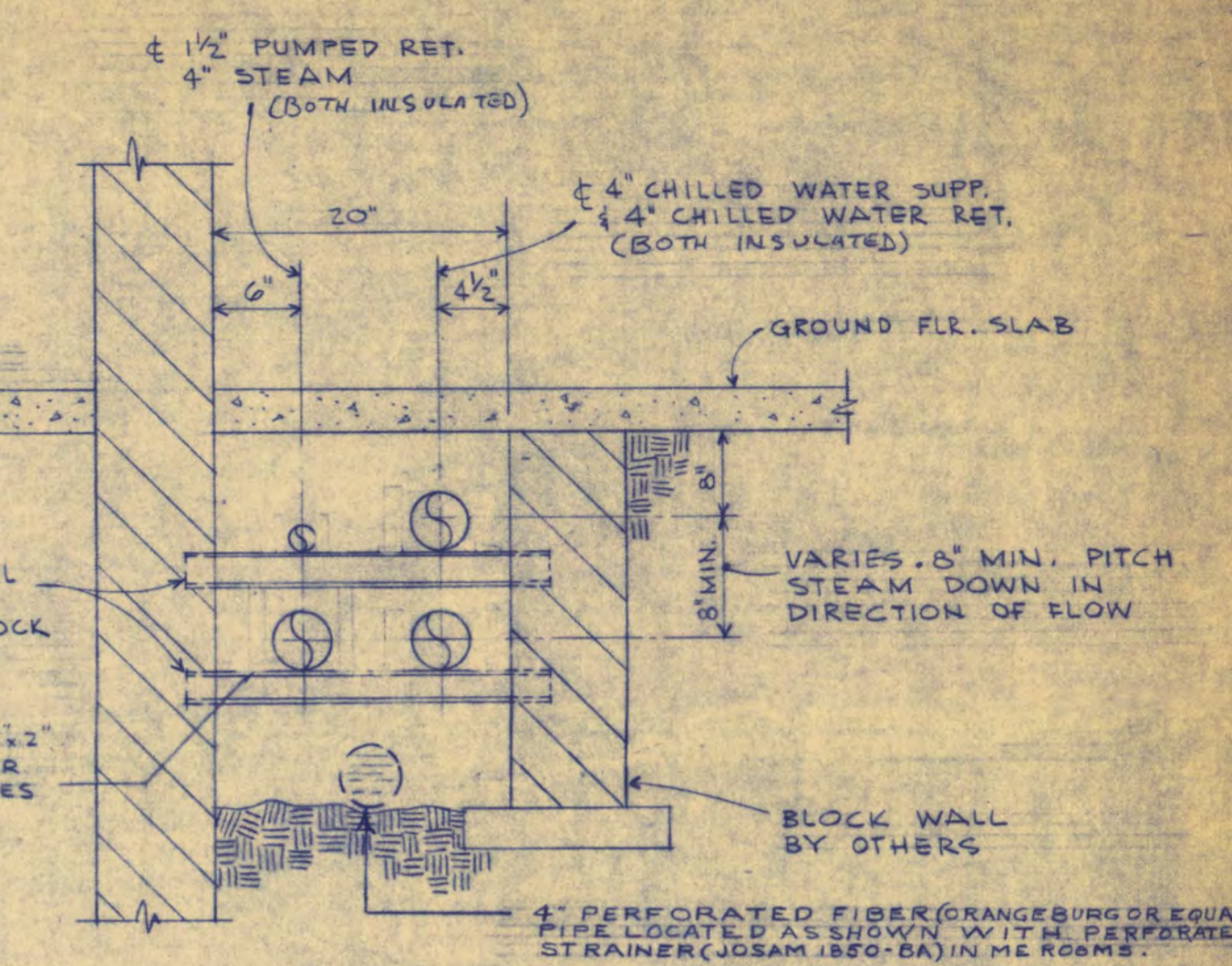
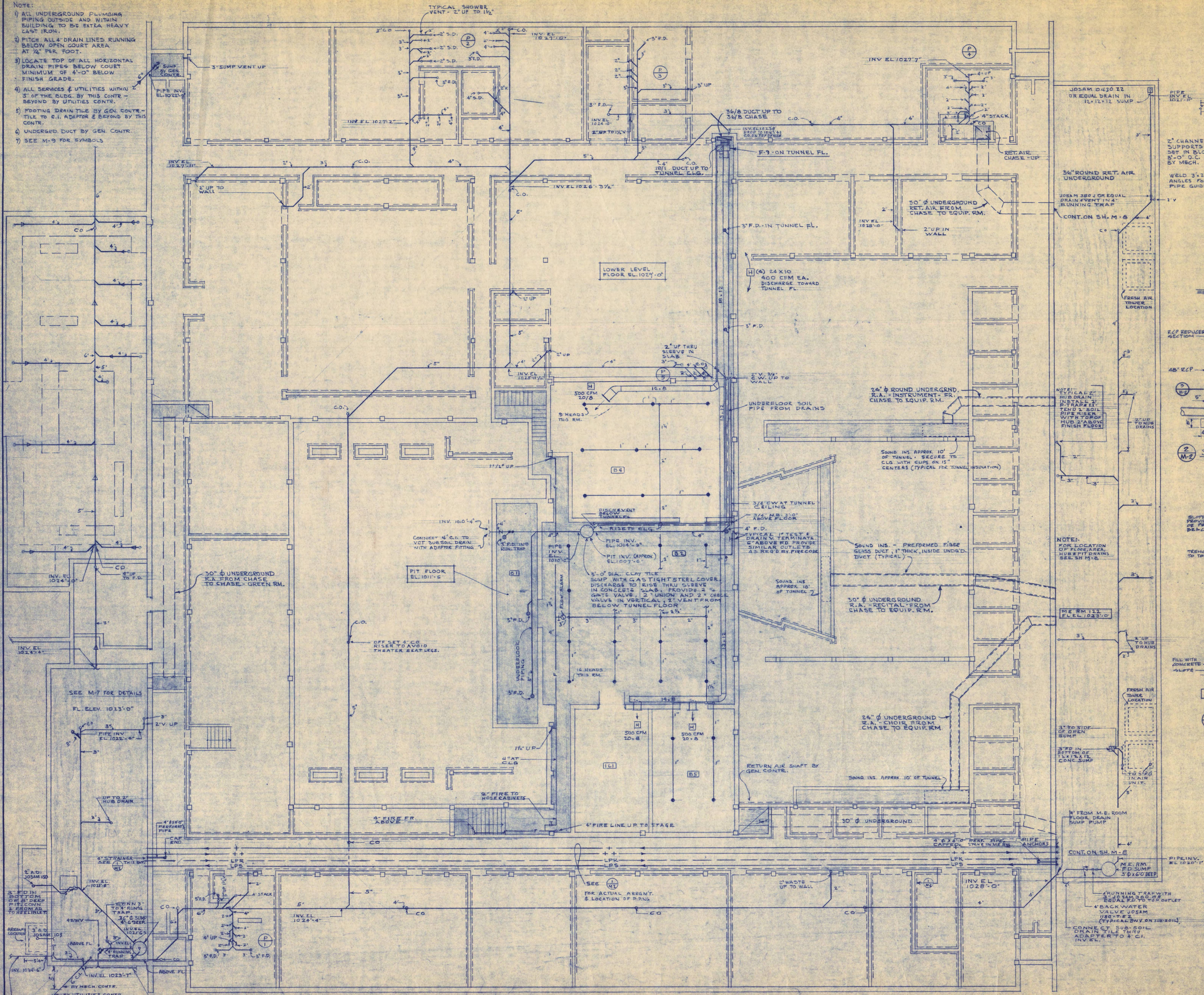


- NOTES:**
- 1) SEE DWGS. A-2, M-2, A-3 AND SPECIF. SECTION 62 FOR DETAILS OF OUTSIDE UTILITIES AND SITE WORK.
 - 2) SEE DWG. A-5 FOR DETAILS OF FRESH AIR INTAKE TOWERS.
 - 3) SEE DWG. M-3 FOR DETAIL OF NEW SERVICE CONNECTIONS IN EXISTING TUNNEL. SEE SPECIF. SECTION 70 FOR PIPING DETAILS.

PLOT & BUILDING PLAN
1/16" = 1'-0"

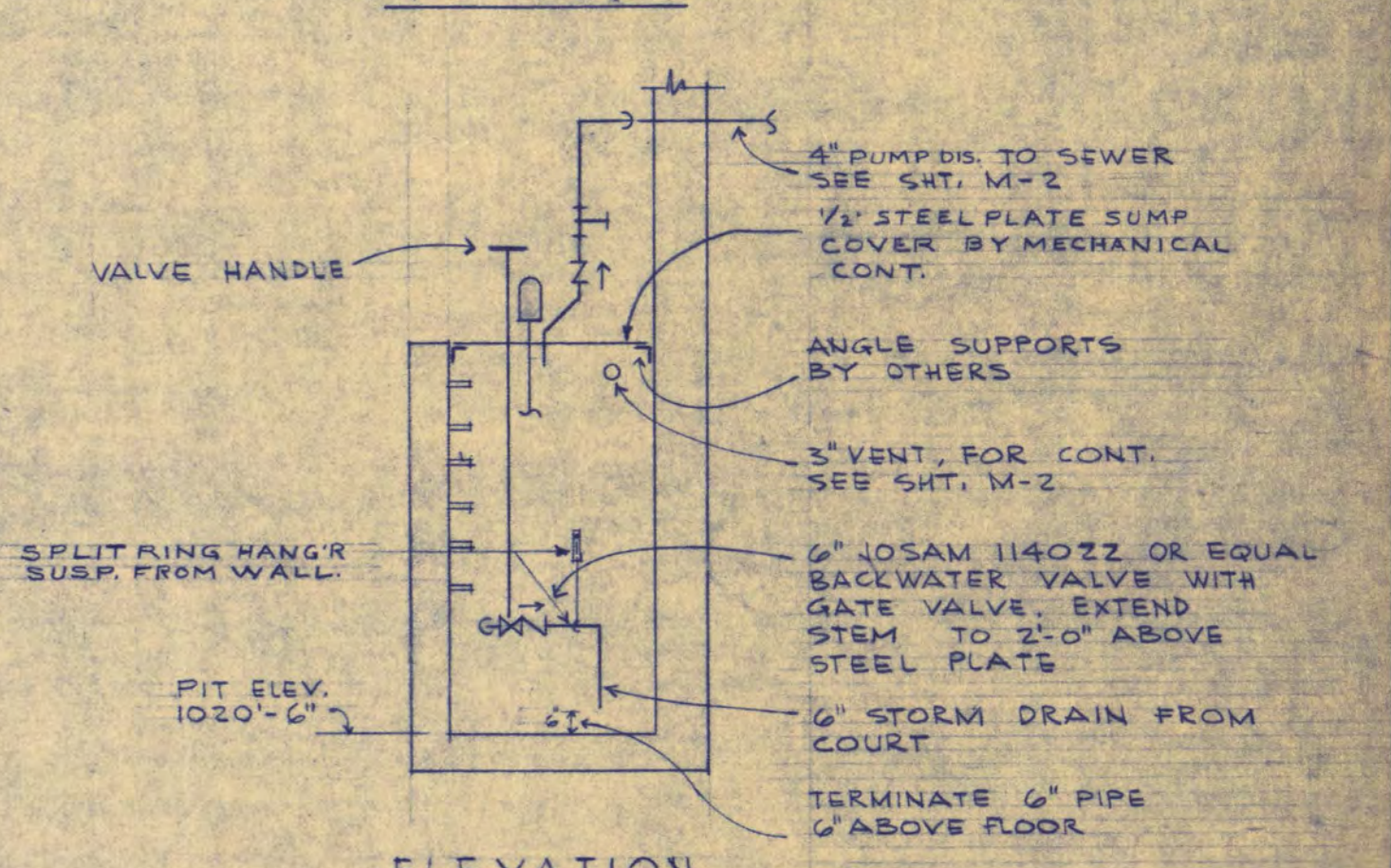
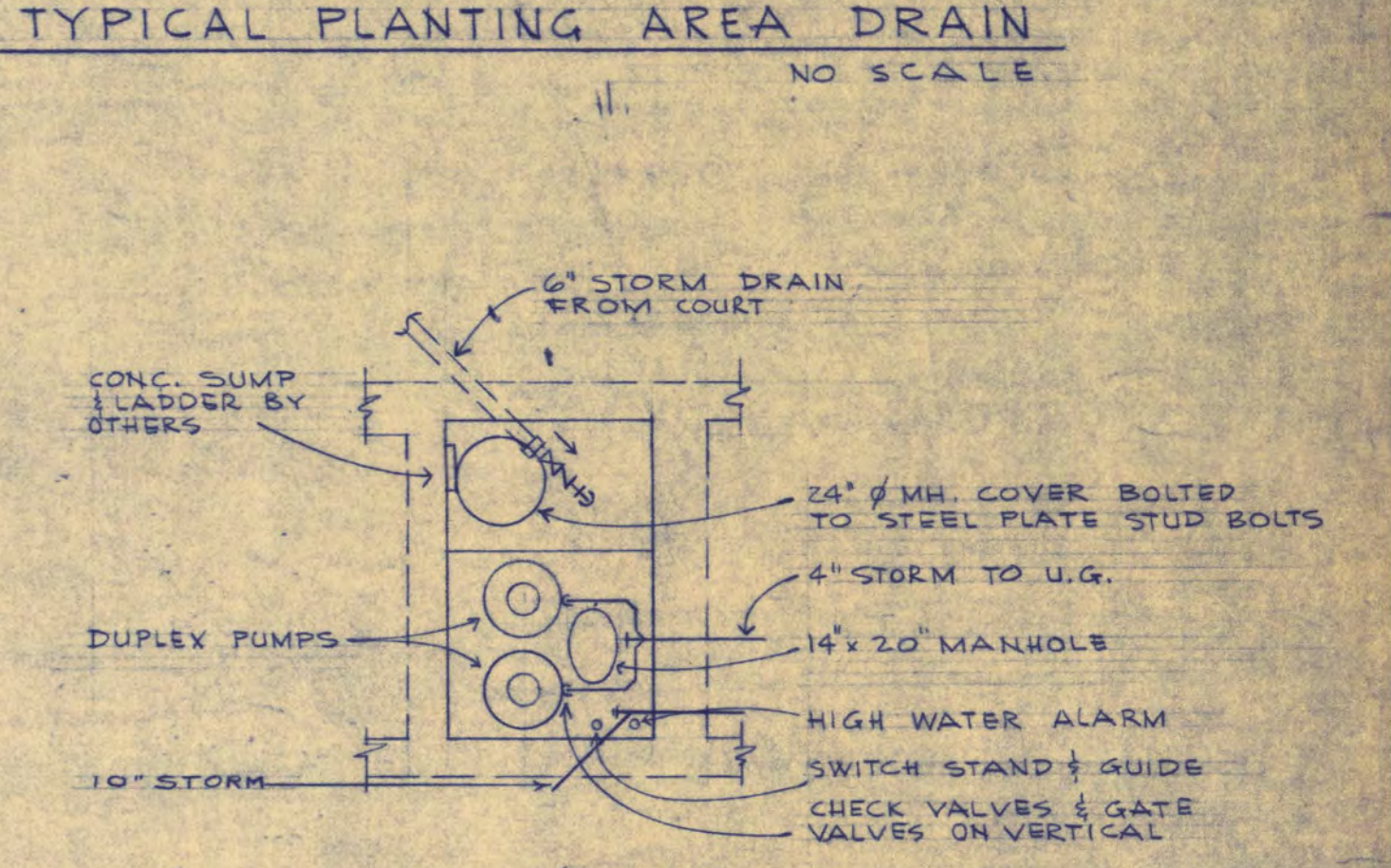
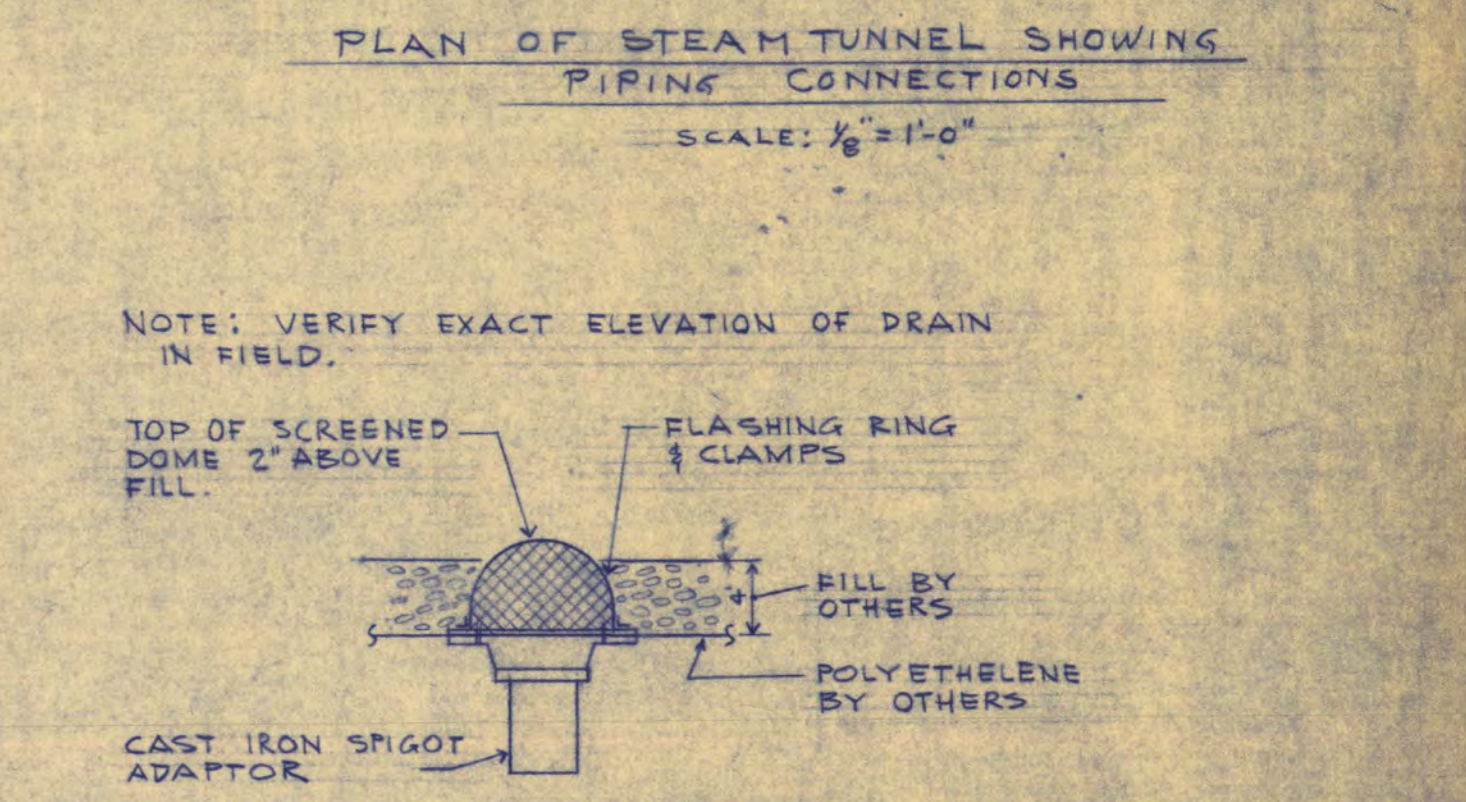
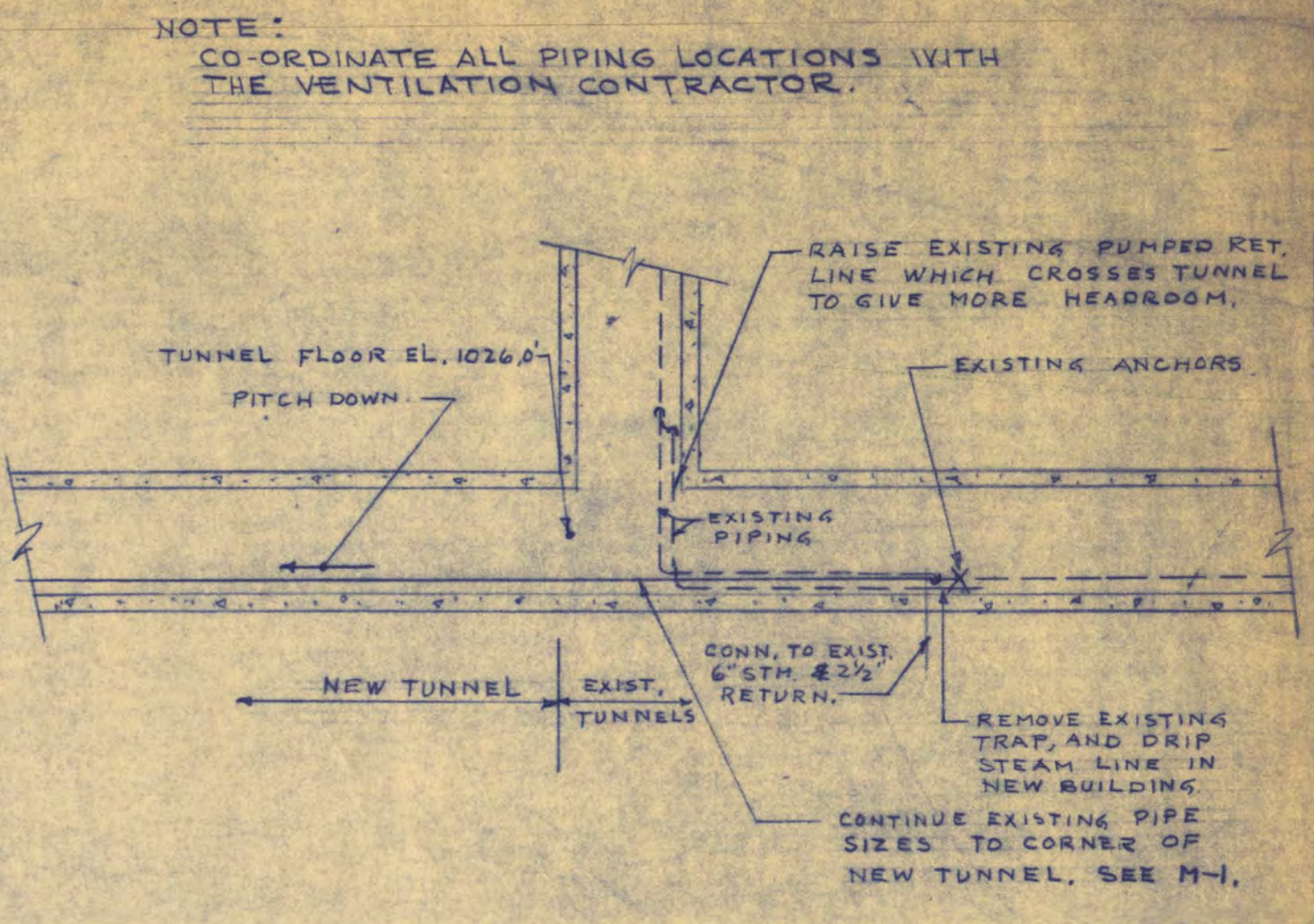
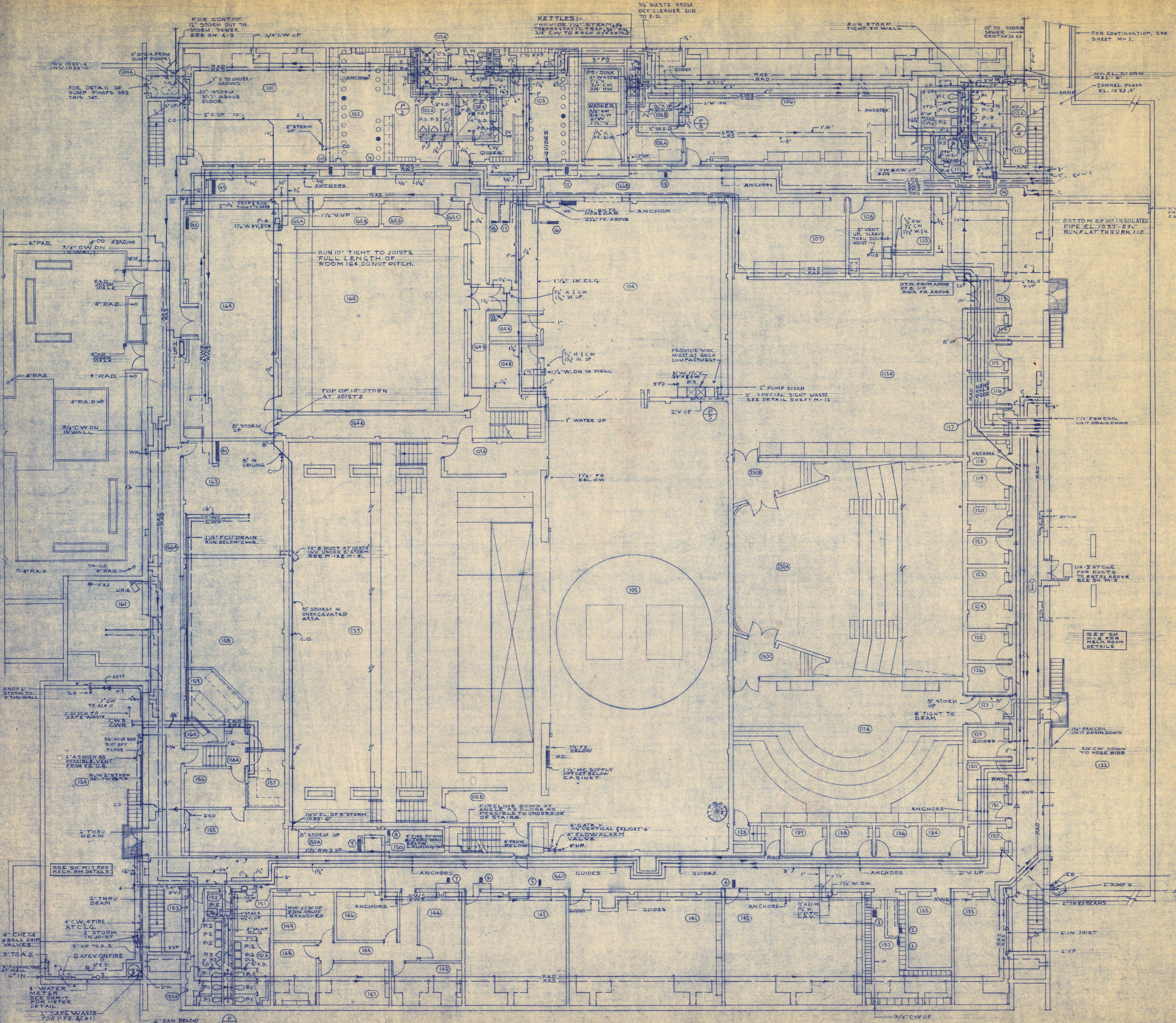
WALTER BUTLER COMPANY	
HAARSTICK LUNDGREN AND ASSOCIATES INC.	
ARCHITECTS ST. PAUL	ENGINEERS MINN.
FINE ARTS BUILDING	
ST. CLOUD STATE COLLEGE ST. CLOUD, MINNESOTA	
DEPARTMENT OF ADMINISTRATION - STATE OF MINNESOTA A. J. NELSON STATE ARCHITECT	
STATE PROJECT NO. 3750	APPROVED BY _____ PRESIDENT, ST. CLOUD STATE COLLEGE
COM. NO. 6401	APPROVED BY _____ EXECUTIVE DIRECTOR, STATE COLLEGE BOARD
DATE 6/15/45	APPROVED BY _____ COMMISSIONER OF ADMINISTRATION (BY AUTHORIZED SIGNATURE)
DRAWN BY L.H.	I HEREBY CERTIFY THAT THIS DRAWING WAS PREPARED BY ME OR UNDER MY DIRECT SUPERVISION AND THAT I AM A REGISTERED ENGINEER UNDER THE LAWS OF THE STATE OF MINNESOTA
CHECKED BY G.H.	<i>A. J. Nelson</i> REG. NO. 3651
SHEET NO. M-1	MECHANICAL
OF 15 SHEETS	PLOT PLAN

- NOTE:
- 1) ALL UNDERGROUND PLUMBING PIPING OUTSIDE AND WITHIN BUILDING TO BE EXTRA HEAVY CAST IRON.
 - 2) FITCH ALL 4" DRAIN LINES RUNNING BELOW OPEN COURT AREA AT 1/4" PER FOOT.
 - 3) LOCATE TOP OF ALL HORIZONTAL DRAIN LINES BELOW COURT MINIMUM OF 4'-0" BELOW FINISH GRADE.
 - 4) ALL SERVICES & UTILITIES WITHIN 5' OF THE BLDG. BY THIS CONTR. - BEYOND BY UTILITIES CONTR.
 - 5) FOOTING DRAIN TILE BY GEN. CONTR. TILE TO C.I. ADAPTOR & BEYOND BY THIS CONTR.
 - 6) UNDERG. DUCT BY GEN. CONTR.
 - 7) SEE M-9 FOR SYMBOLS



WALTER BUTLER COMPANY	
HAARSTICK LUNDGREN AND ASSOCIATES INC.	
ARCHITECTS ST. PAUL	ENGINEERS MINN.
FINE ARTS BUILDING	
ST. CLOUD STATE COLLEGE ST. CLOUD, MINNESOTA	
DEPARTMENT OF ADMINISTRATION - STATE OF MINNESOTA A. J. NELSON STATE ARCHITECT	
STATE PROJECT NO. 3750	APPROVED BY: PRESIDENT, ST. CLOUD STATE COLLEGE
COMA NO.	APPROVED BY: EXECUTIVE DIRECTOR, STATE COLLEGE BOARD
6401	APPROVED BY: COMMISSIONER OF ADMINISTRATION AN APPROVED SIGNATURE
DATE 6/19/65	I HEREBY CERTIFY THAT THIS DRAWING WAS PREPARED BY ME OR UNDER MY DIRECT SUPERVISION AND THAT I AM A REGISTERED ENGINEER UNDER THE LAWS OF THE STATE OF MINNESOTA.
DRAWN BY V.N. JE	BY: _____ REG. NO. _____
CHECKED BY G.M.	BY: _____ REG. NO. _____
SHEET NO. M-2	MECHANICAL
REVISED 5/14/66	UNDERGROUND PLUMBING HEATING VENTILATION

UNDERGROUND PLAN
 1/8" = 1'-0"



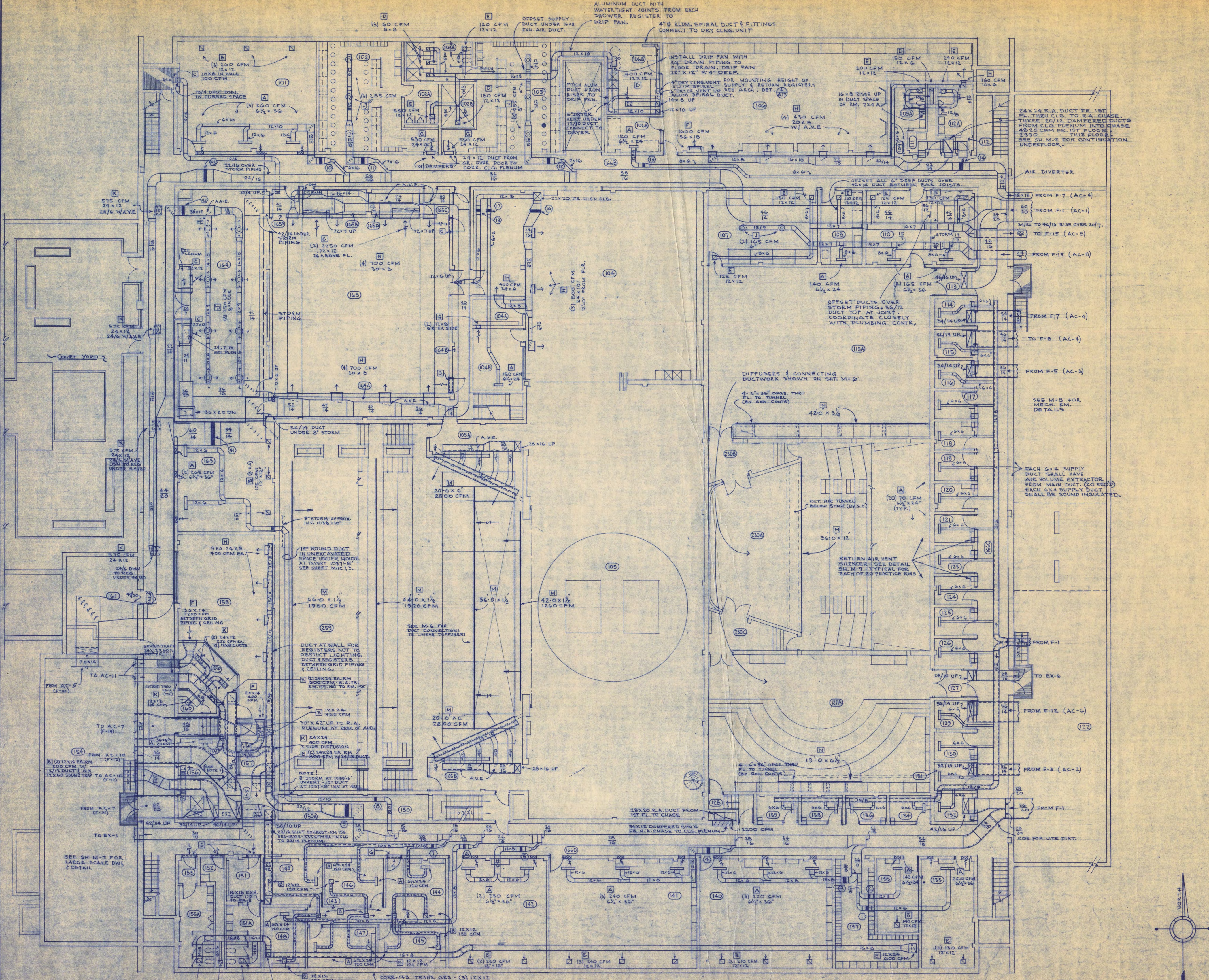
COURT STORM PIT - ROOM 154 A
1/2" = 1'-0"

LOWER LEVEL PLAN
1/8" = 1'-0"

WALTER BUTLER COMPANY HAARSTICK LUNDGREN AND ASSOCIATES INC.	
ARCHITECTS ST. PAUL	ENGINEERS MINN.
FINE ARTS BUILDING	
ST. CLOUD STATE COLLEGE ST. CLOUD, MINNESOTA	
DEPARTMENT OF ADMINISTRATION - STATE OF MINNESOTA ST. PAUL, MINNESOTA	
A. J. NELSON	STATE ARCHITECT
STATE PROJECT NO. 3750	APPROVED BY _____ PRESIDENT, ST. CLOUD STATE COLLEGE
COMMA. NO. 6401	APPROVED BY _____ EXECUTIVE DIRECTOR, STATE COLLEGE BOARD
DATE 6/15/65	APPROVED BY _____ COMMISSIONER OF ADMINISTRATION (AN AUTHORIZED SIGNATURE)
DRAWN BY Y.N.	I HEREBY CERTIFY THAT THIS DRAWING WAS PREPARED BY ME OR UNDER MY DIRECT SUPERVISION AND THAT I AM A REGISTERED ENGINEER UNDER THE LAWS OF THE STATE OF MINN.
CHECKED BY Y.N.	REG. NO. _____
SHEET NO. M-3	MECHANICAL
REVISED 5/14/66	LOWER LEVEL PLUMBING & HEATING

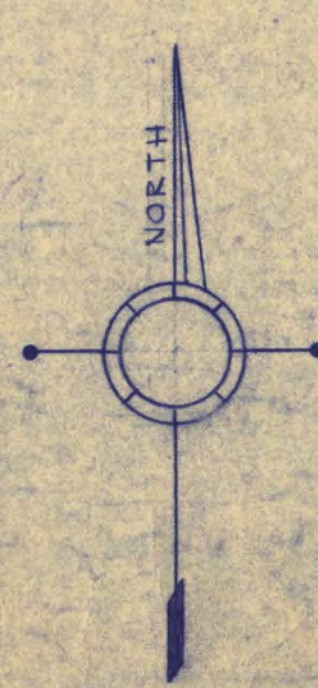
NOTES

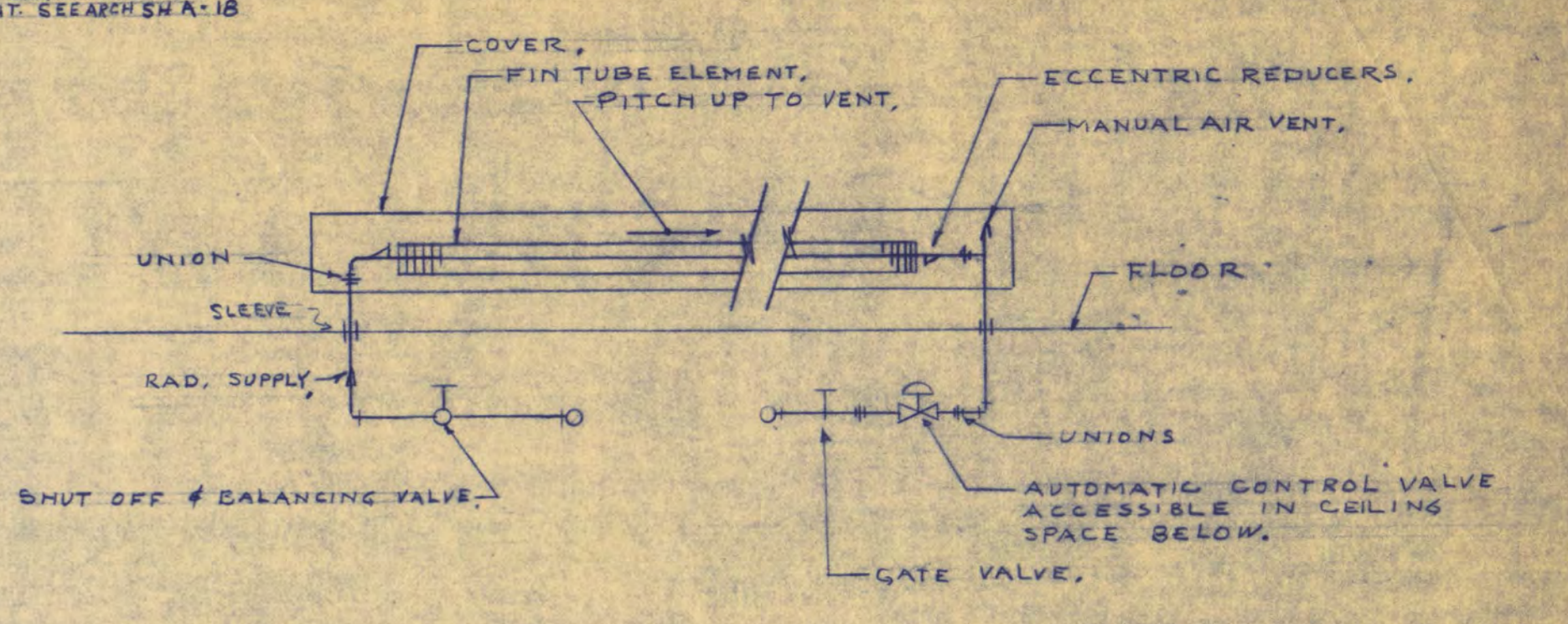
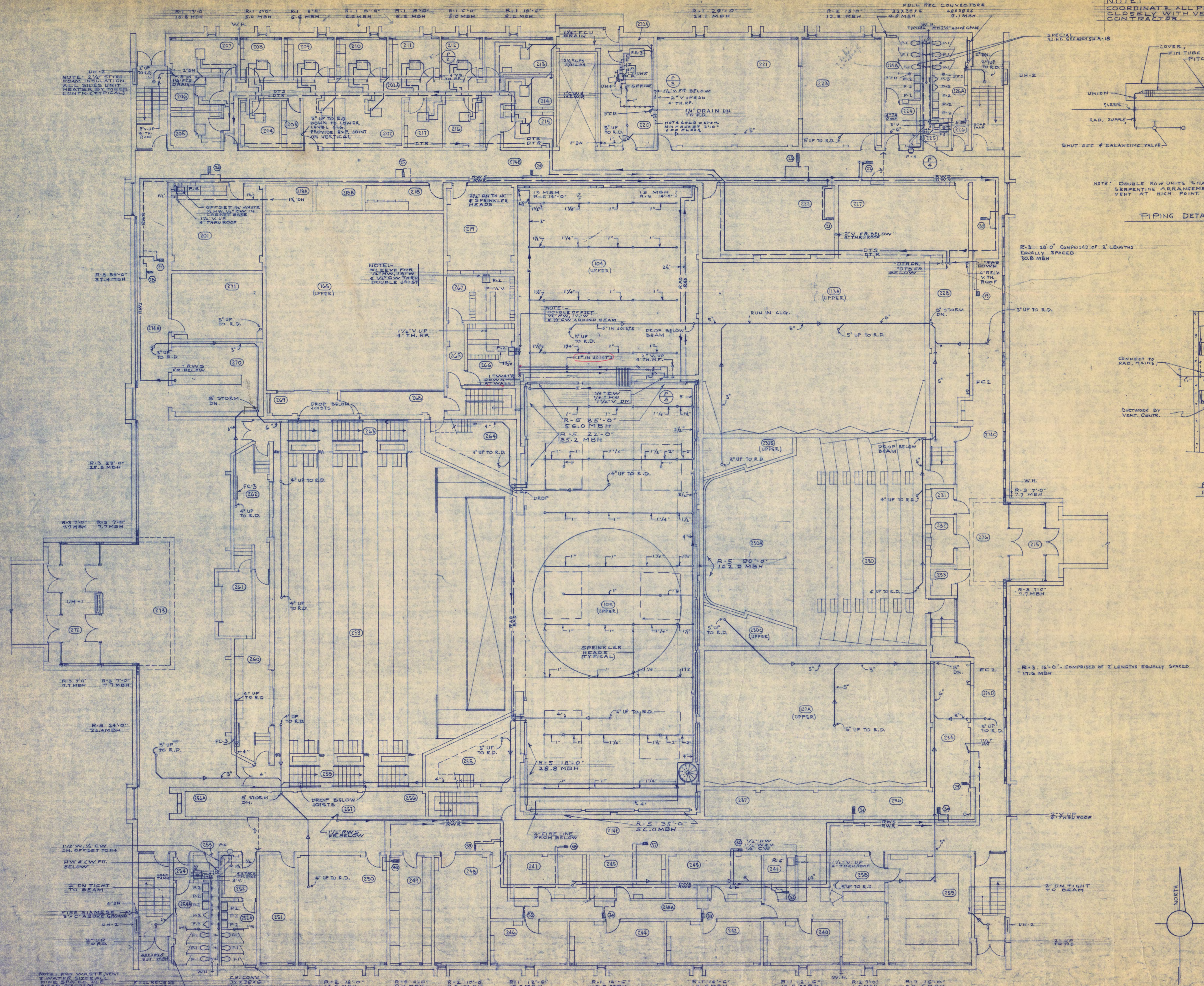
- 1) COORDINATE ALL WALL FLOOR & ROOF OPENINGS WITH GENERAL CONTRACTOR
- 2) COORDINATE ALL CEILING GRILLE DIFFUSER, ETC. LOCATION WITH LIGHTING & TILE CEILING CONTRACTORS.
- 3) SEE SH. M-9 FOR SYMBOLS
- 4) SEE SH. M-12 FOR BUILDING SECTIONS & DETAILS
- 5) LOCATE ROOM THERMOSTATS ABOVE LIGHT SWITCHES OR AS DIRECTED
- 6) COORDINATE ALL DUCT LOCATIONS WITH PIPING CONTRACTOR.



LOWER LEVEL PLAN
1/8" = 1' - 0"

WALTER BUTLER COMPANY	
HAARSTIK LUNDGREN AND ASSOCIATES INC.	
ARCHITECTS ST. PAUL	ENGINEERS MINN.
FINE ARTS BUILDING	
ST. CLOUD STATE COLLEGE ST. CLOUD, MINNESOTA	
DEPARTMENT OF ADMINISTRATION - STATE OF MINNESOTA ST. PAUL, MINNESOTA	
A. J. NELSON	STATE ARCHITECT
STATE PROJECT NO. 3750	APPROVED BY: _____ PRESIDENT, ST. CLOUD STATE COLLEGE
CONTRACT NO. 6401	APPROVED BY: _____ EXECUTIVE DIRECTOR, STATE COLLEGE BOARD
DATE 6/13/65	APPROVED BY: _____ COMMISSIONER OF ADMINISTRATION AN AUTHORIZED SIGNATURE
DRAWN BY D.M.	I HEREBY CERTIFY THAT THIS DRAWING WAS PREPARED BY ME OR UNDER MY DIRECT SUPERVISION AND THAT I AM A REGISTERED ENGINEER UNDER THE LAWS OF THE STATE OF MINNESOTA.
CHECKED BY G.J.H.	REG. NO. _____
SHEET NO. M-4	MECHANICAL
REVISED 5/16/66	LOWER LEVEL VENTILATION

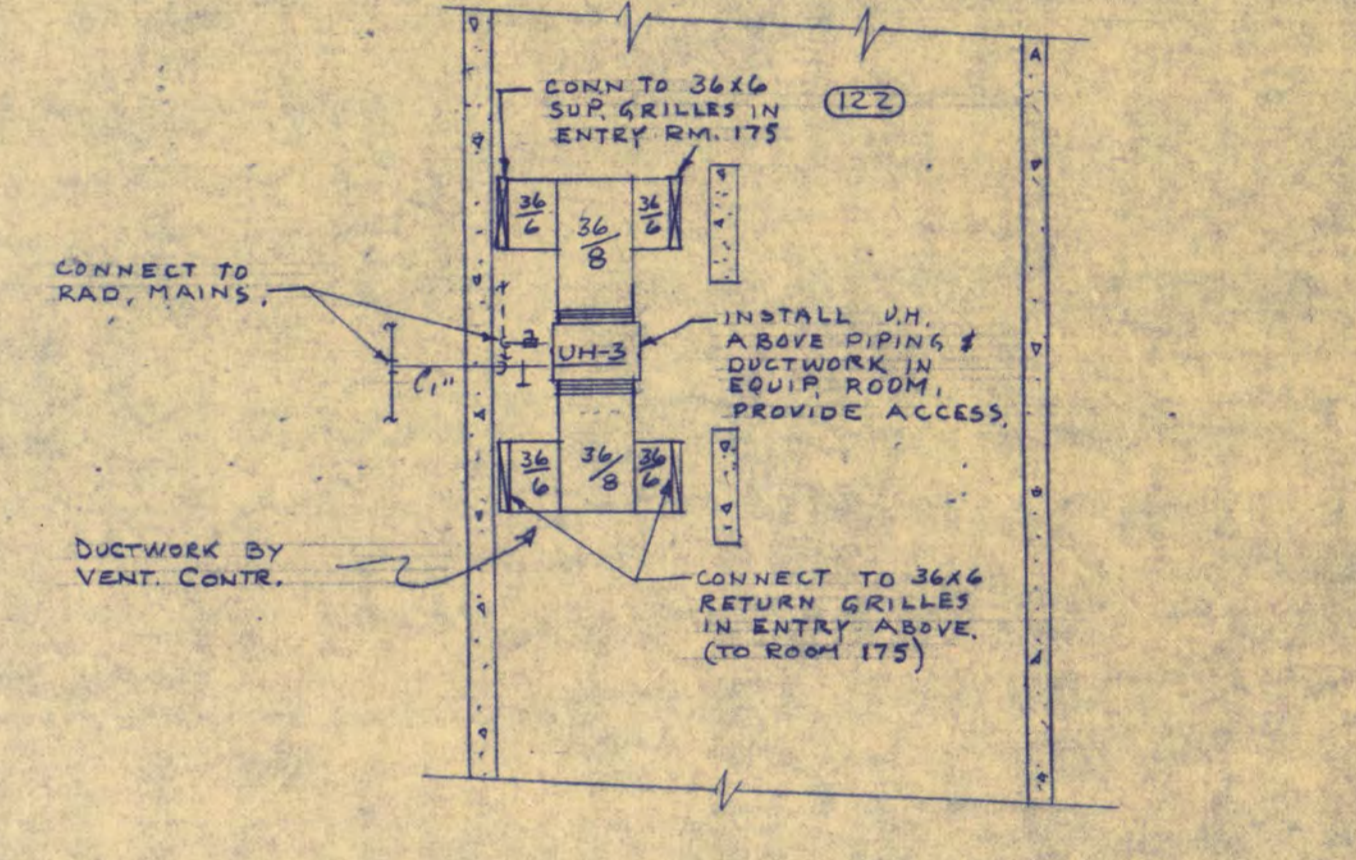




NOTE: DOUBLE ROW UNITS SHALL HAVE SERPENTINE ARRANGEMENT WITH VENT AT HIGH POINT.

PIPING DETAIL FOR FIN TUBE RADIATION
NO SCALE

R-3 18'-0" COMPRISED OF 2' LENGTHS EQUALLY SPACED 30.8 MBH



PART-PLAN OF EQUIPMENT ROOM BELOW ENTRY SHOWING UNIT HEATER
SCALE: 1/8" = 1'-0"

FIRST FLOOR PLAN
1/8" = 1'-0"

WALTER BUTLER COMPANY	
HAARSTICK LUNDGREN AND ASSOCIATES INC.	
ARCHITECTS ST. PAUL	ENGINEERS MINN.
FINE ARTS BUILDING	
ST. CLOUD STATE COLLEGE ST. CLOUD, MINNESOTA	
DEPARTMENT OF ADMINISTRATION - STATE OF MINNESOTA A. J. NELSON STATE ARCHITECT	
STATE PROJECT NO. 3750	APPROVED BY _____ PRESIDENT, ST. CLOUD STATE COLLEGE
COMM. NO. 6401	APPROVED BY _____ EXECUTIVE DIRECTOR, STATE COLLEGE BOARD
	APPROVED BY _____ COMMISSIONER OF ADMINISTRATION AND AUTHORIZED SIGNATURE
DRAWN BY GJS/LAS	I HEREBY CERTIFY THAT THIS DRAWING WAS PREPARED BY ME OR UNDER MY DIRECT SUPERVISION AND THAT I AM A REGISTERED ENGINEER UNDER THE LAWS OF THE STATE OF MINNESOTA.
CHECKED BY Y.N.	REG. NO. _____
SHEET NO. M-5	MECHANICAL
OF 12 SHEETS	FIRST FLOOR PLUMBING & HEATING