

SECTION 1
1/4" = 1'-0"

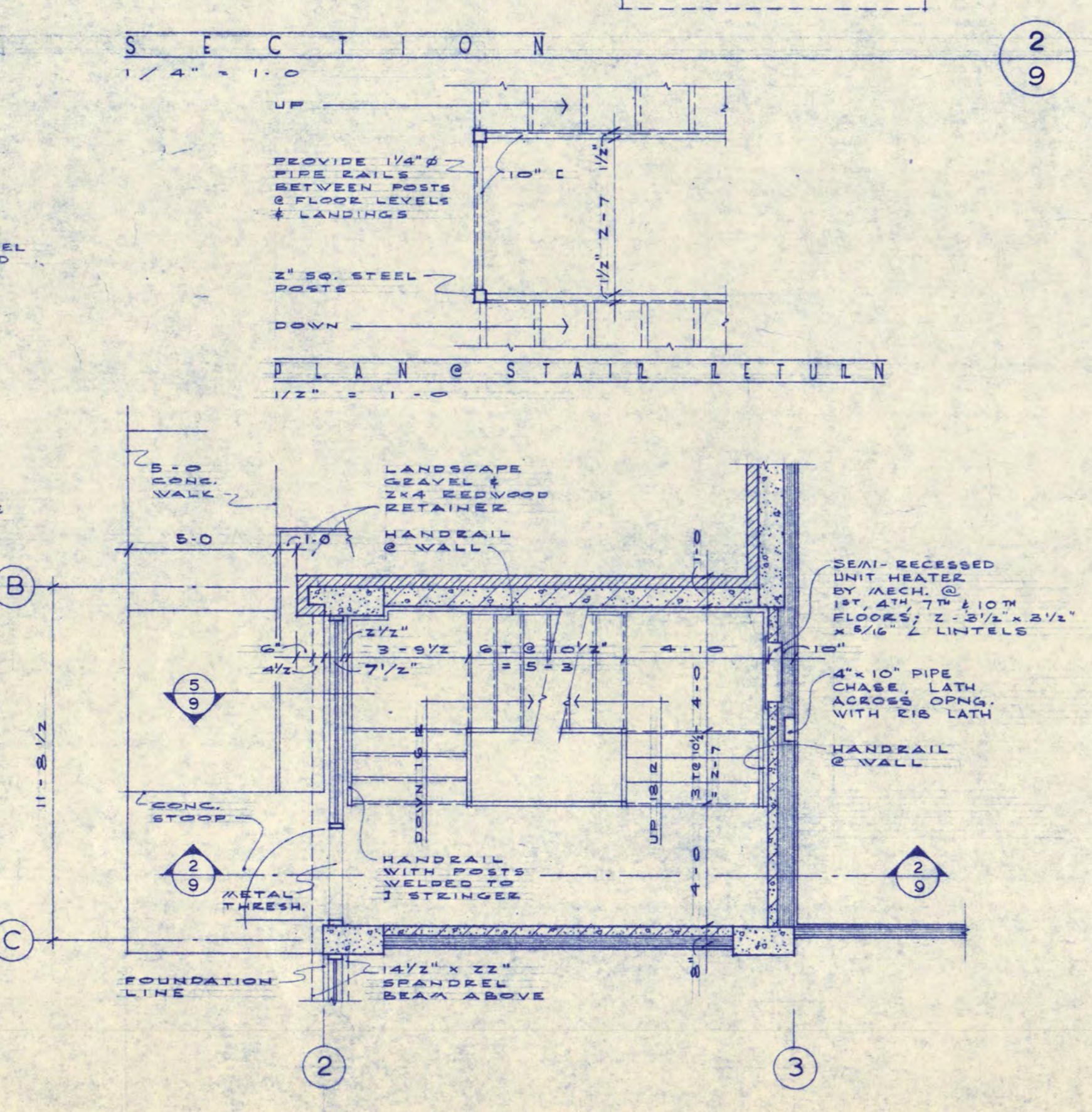
SECTION 2
1/4" = 1'-0"

SECTION 3
1/4" = 1'-0"

PLAN @ TYPICAL FLOOR

PLAN @ FIRST FLOOR

STAIR "A" DETAILS

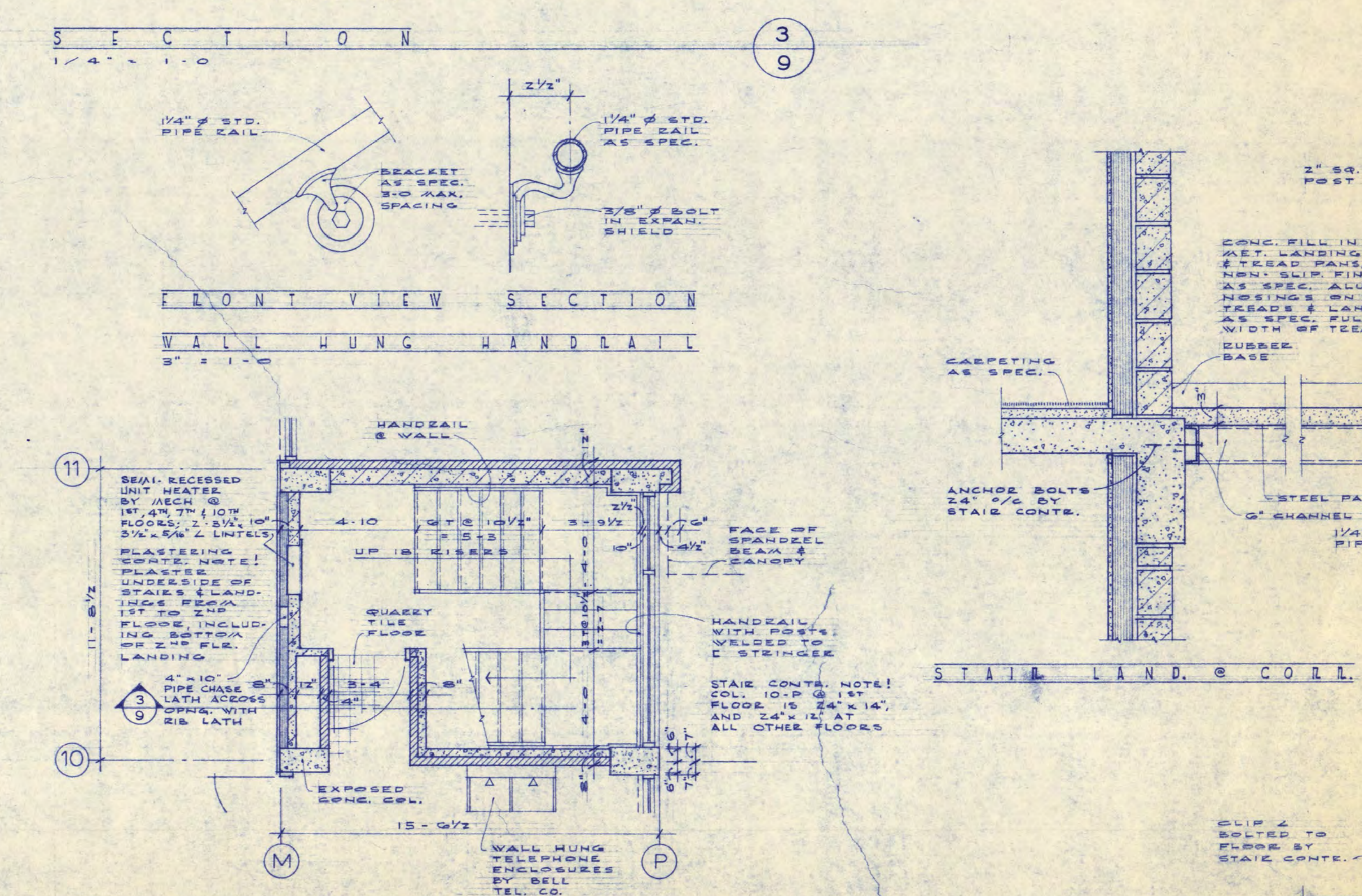
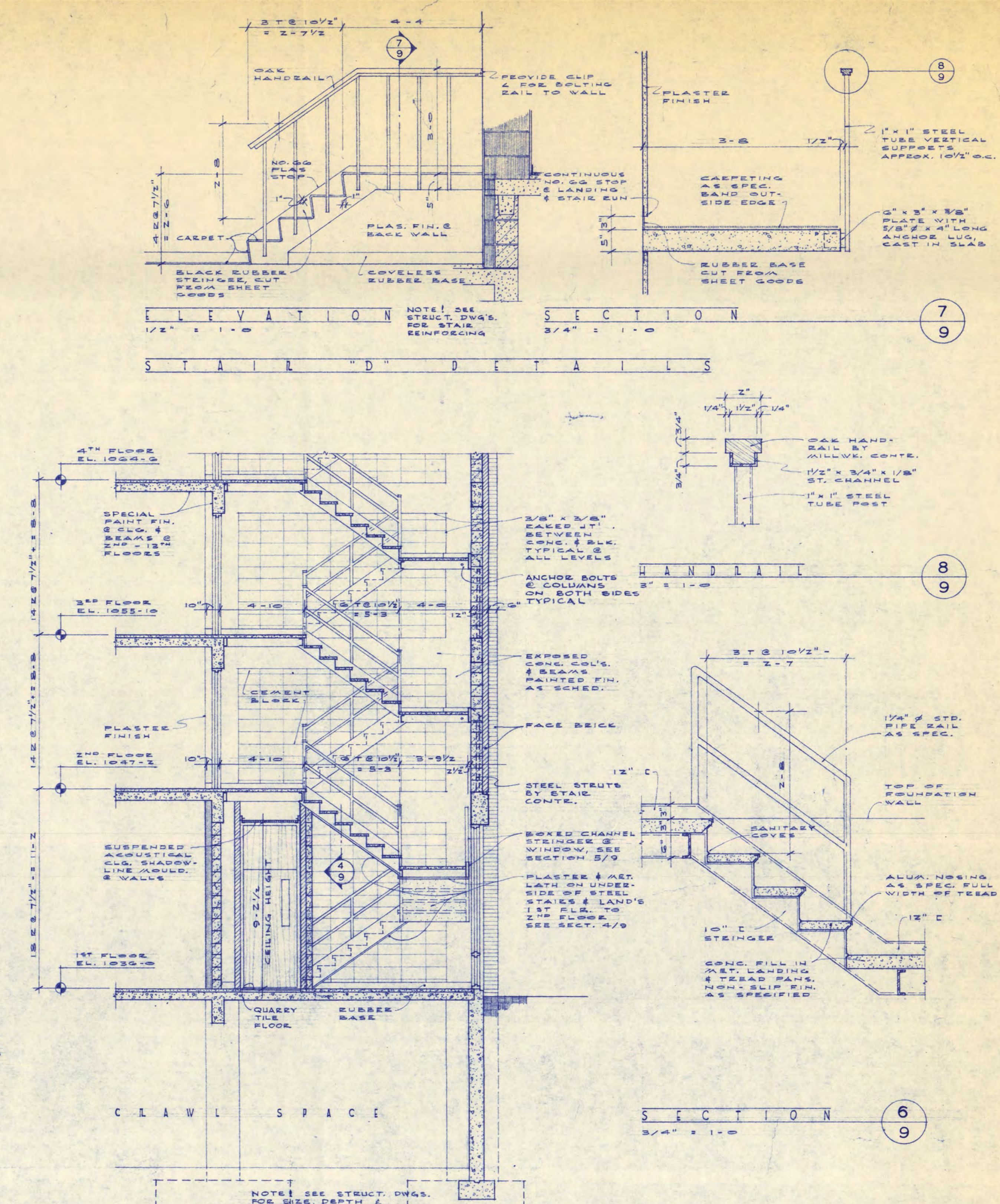


SECTION 4
1/4" = 1'-0"

SECTION 5
1/4" = 1'-0"

PLAN @ STAIR RETURN

STAIR "B" DETAILS



SECTION 6
3/4" = 1'-0"

SECTION 7
3/4" = 1'-0"

SECTION 8
3/4" = 1'-0"

SECTION 9
3/4" = 1'-0"

SECTION 10
3/4" = 1'-0"

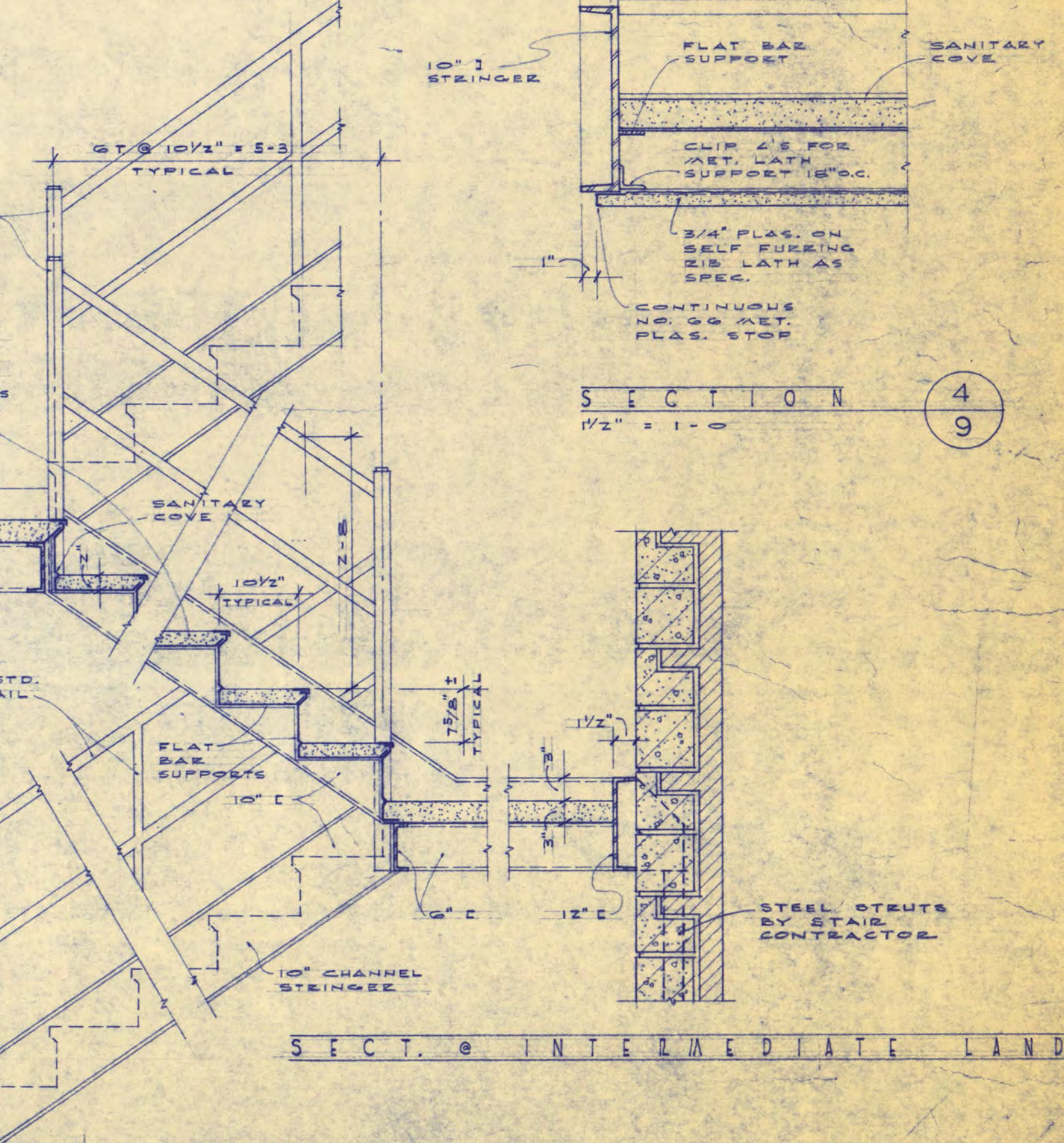
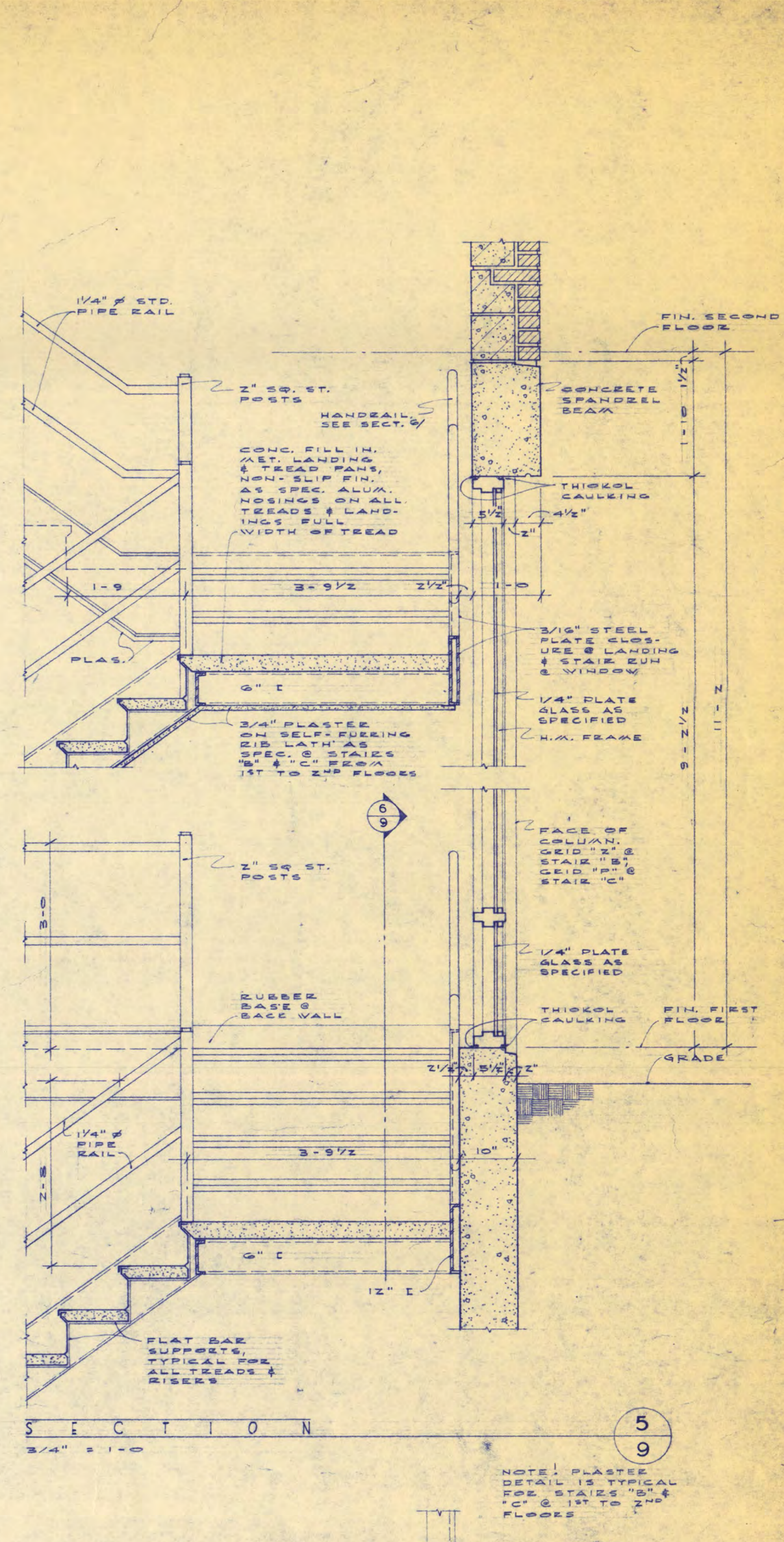
SECTION 11
3/4" = 1'-0"

FRONT VIEW SECTION

WALL HUNG HANDRAIL

PLAN @ FIRST FLOOR

STAIR "C" DETAILS



SECTION 12
3/4" = 1'-0"

SECTION 13
3/4" = 1'-0"

SECTION 14
1/2" = 1'-0"

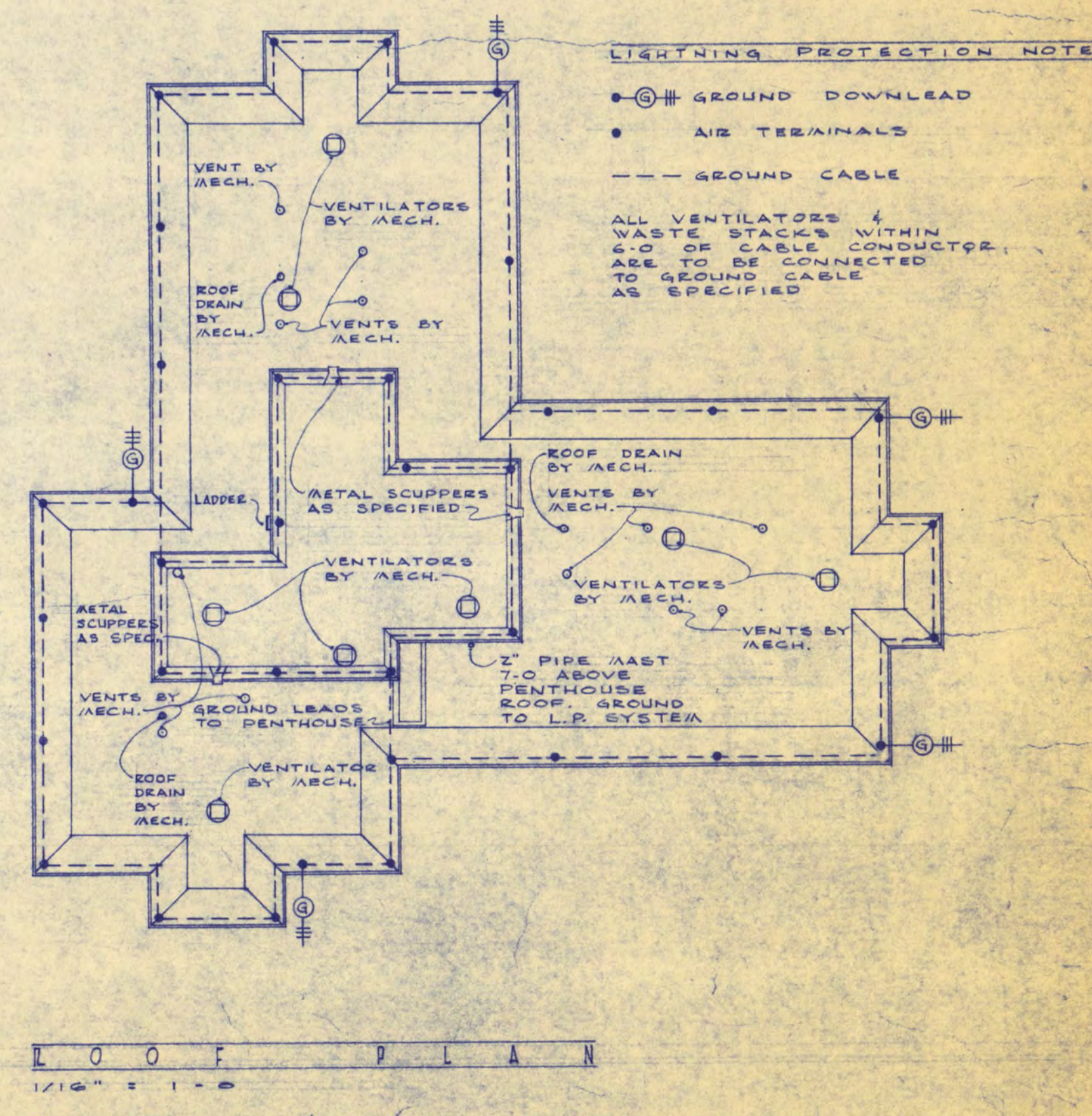
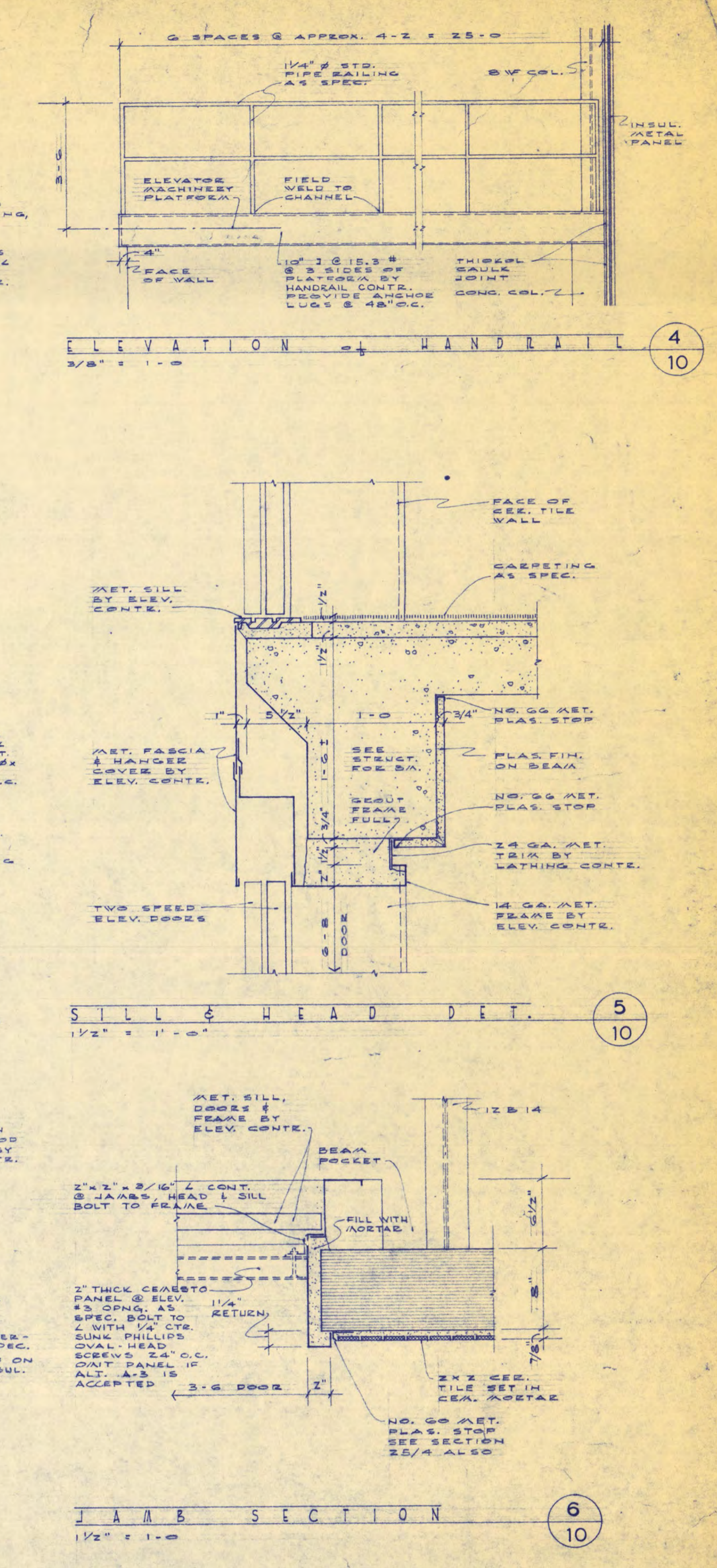
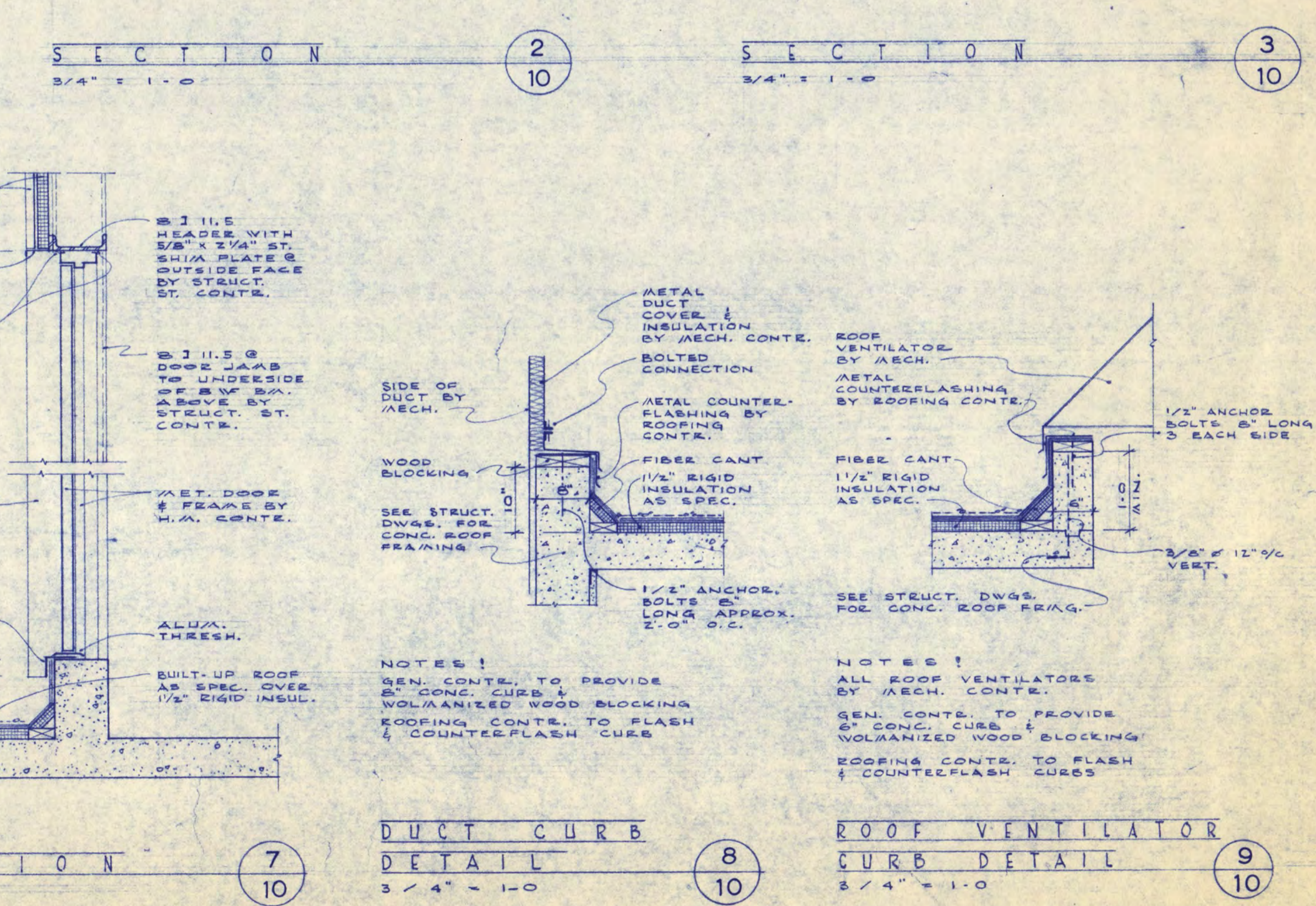
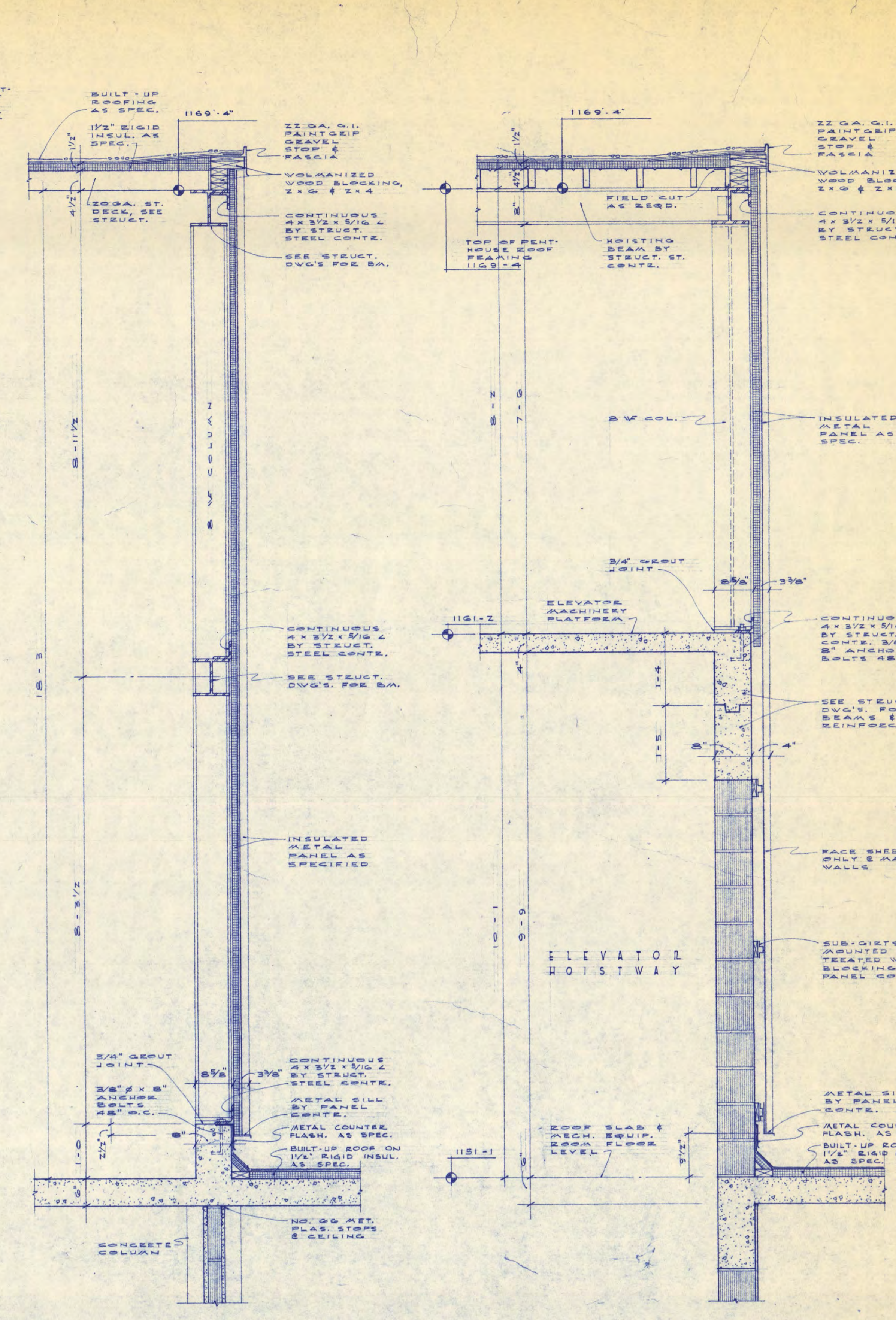
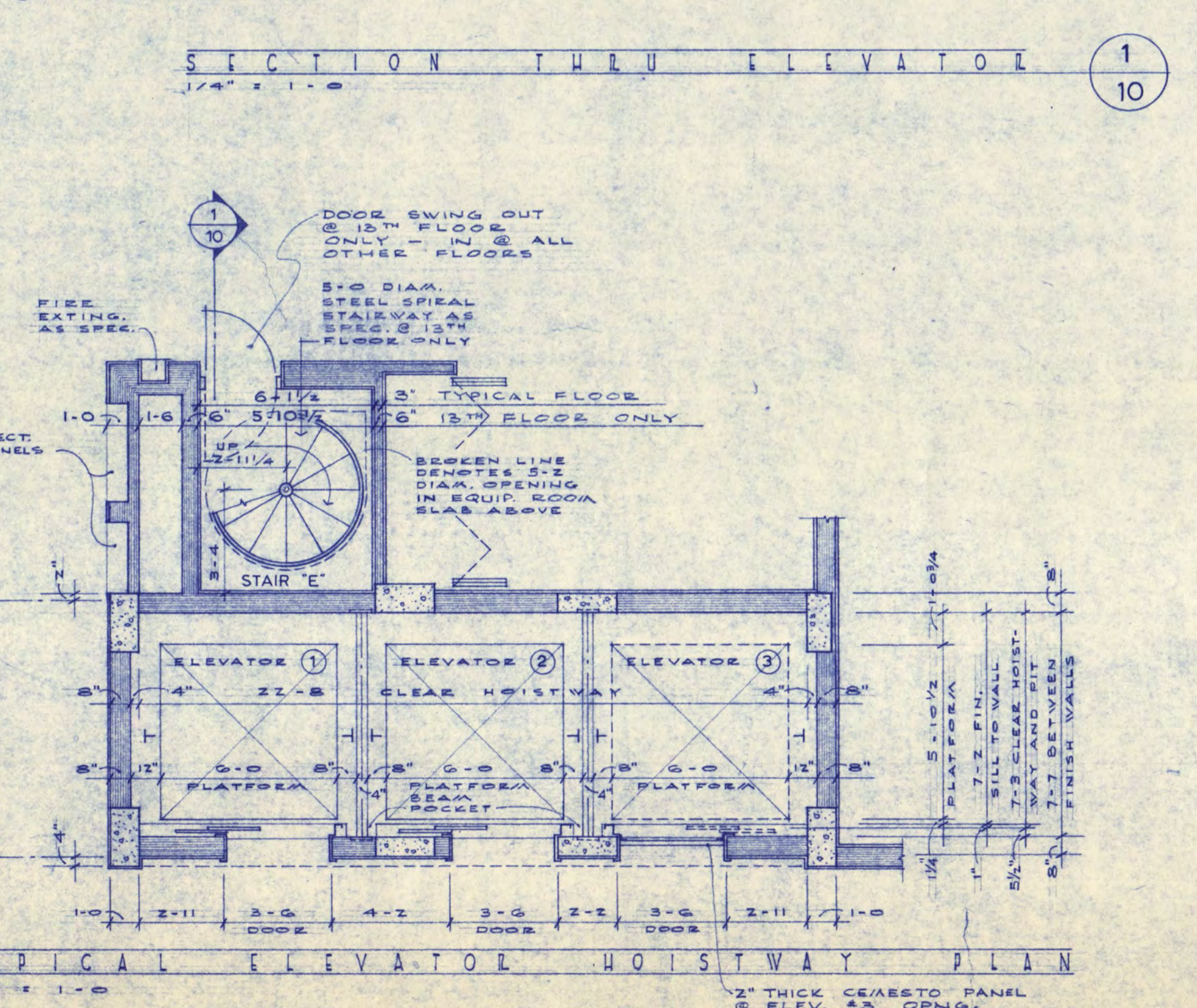
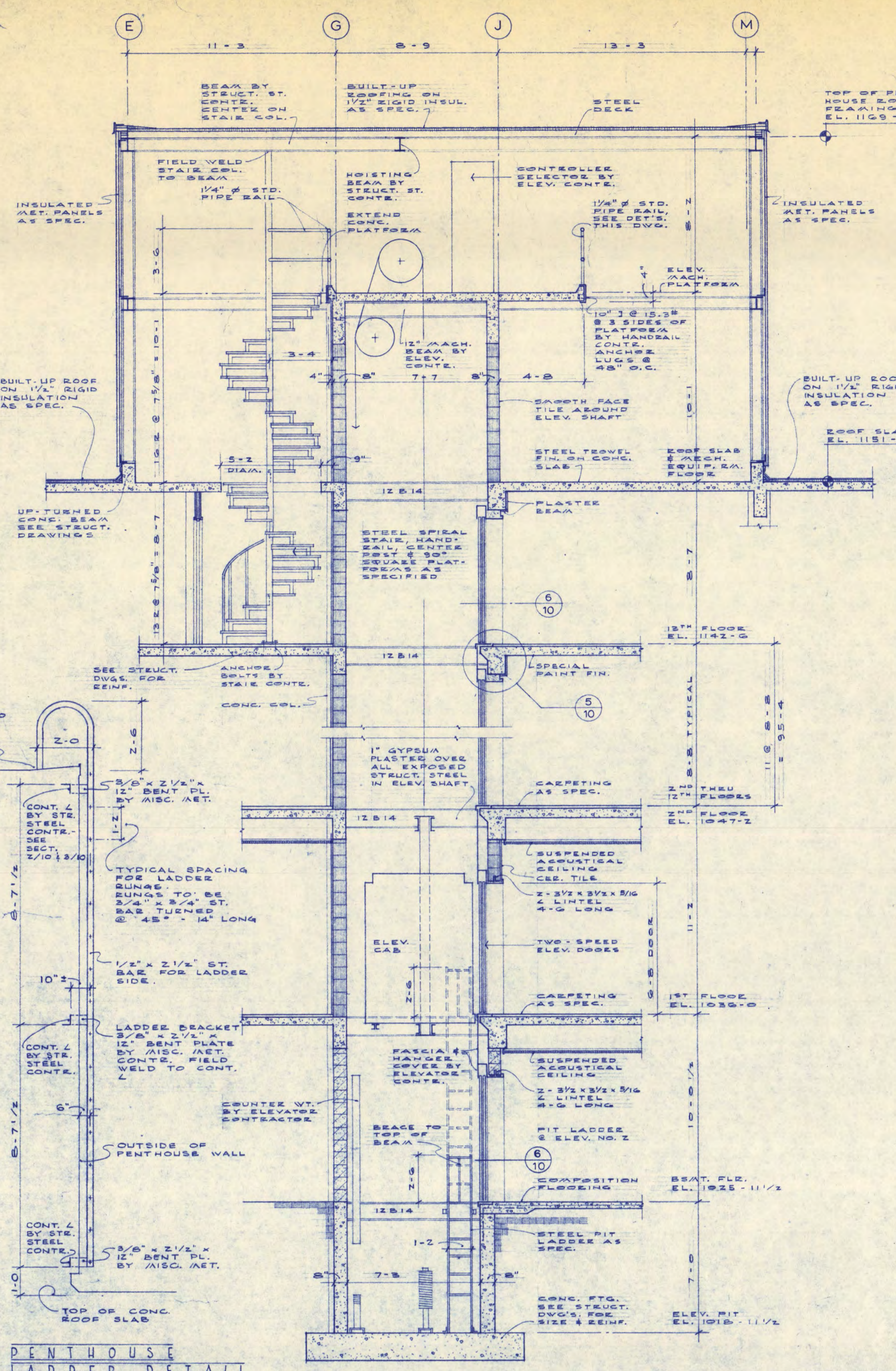
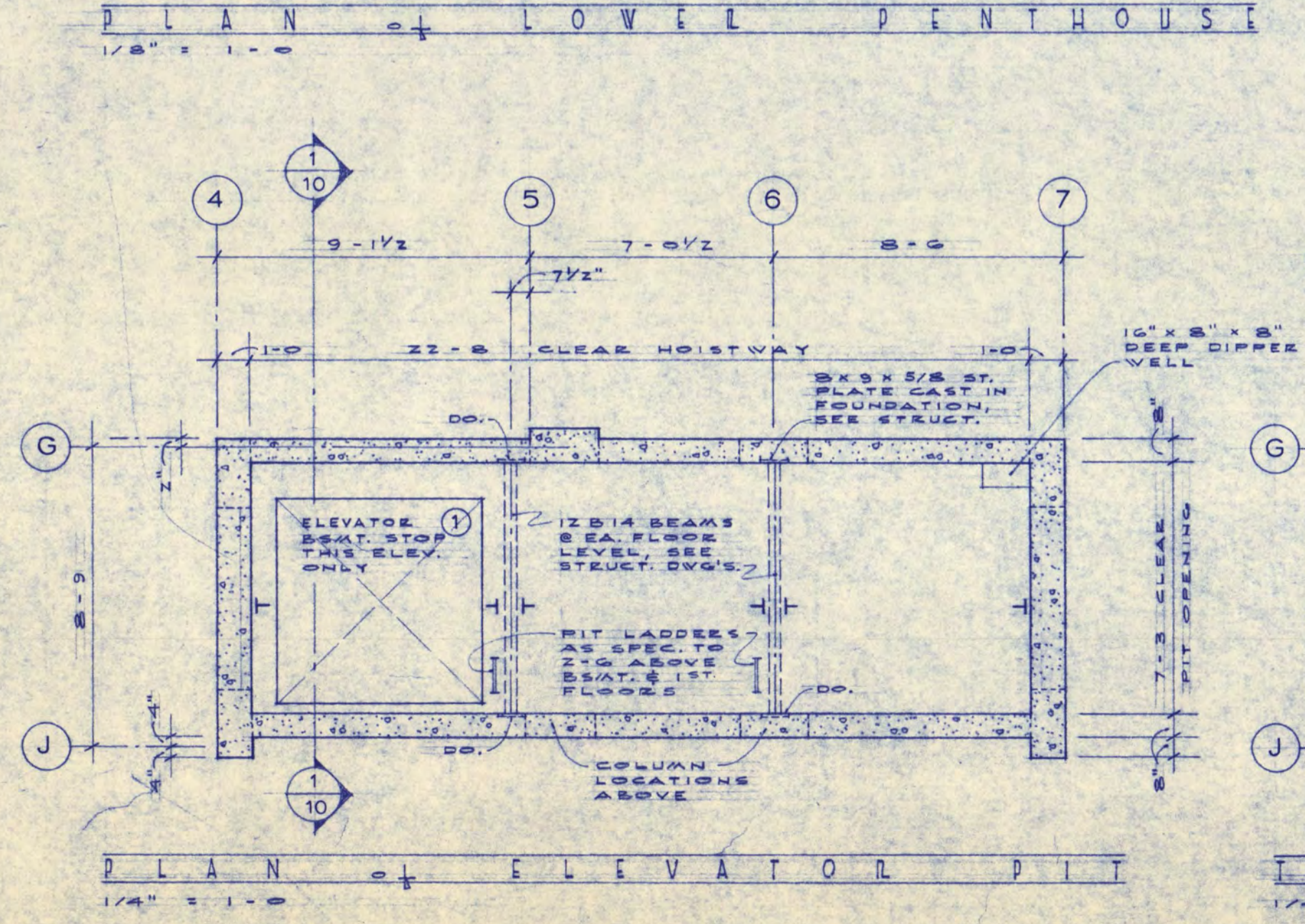
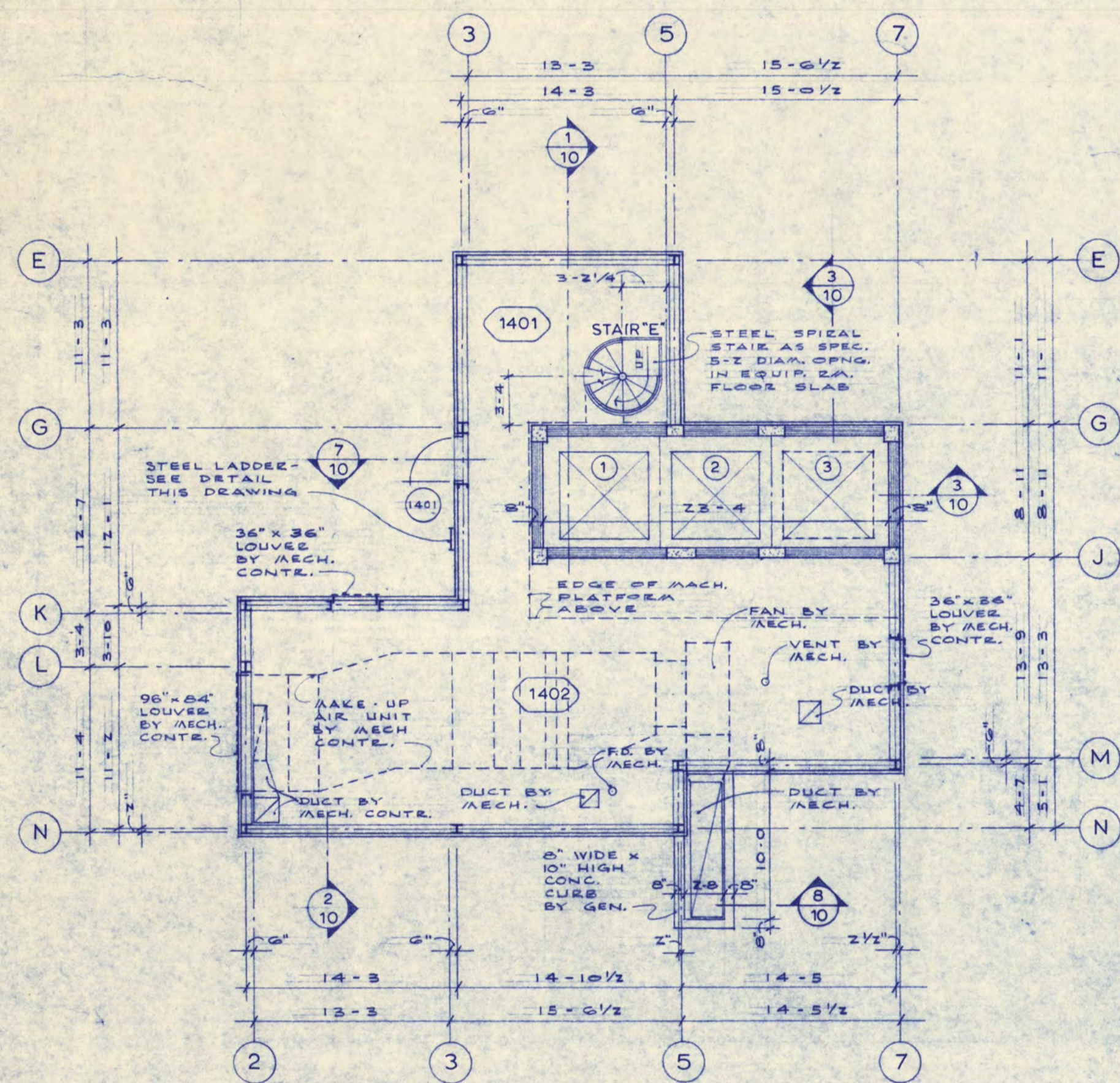
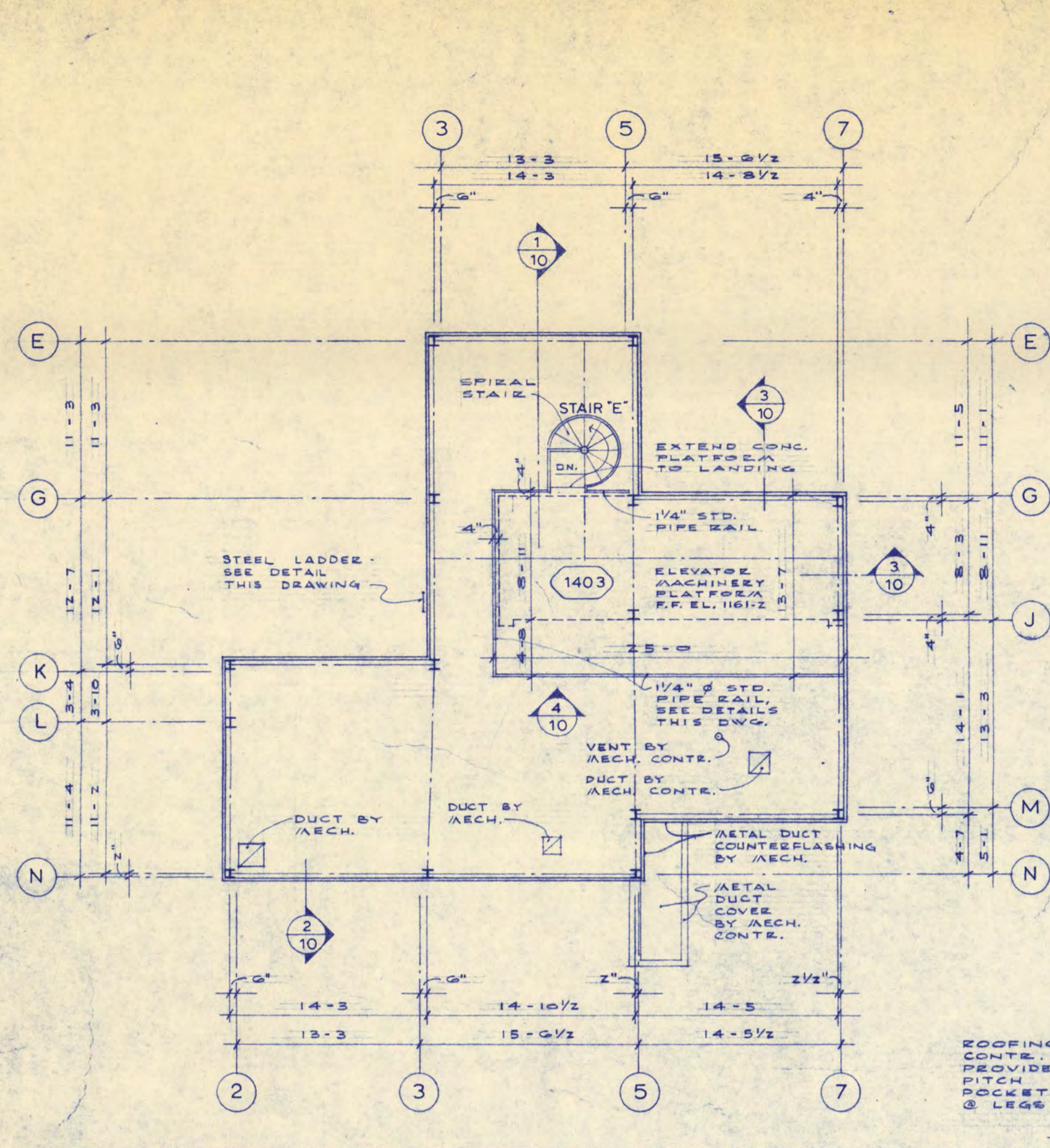
SECTION 15
1/2" = 1'-0"

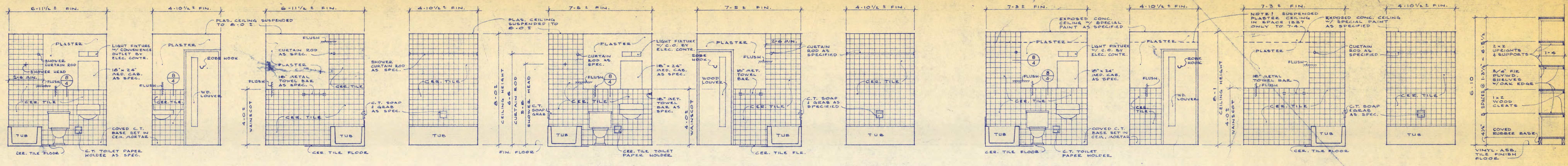
STAIR LAND @ CORR

SECT. @ INTERMEDIATE LAND

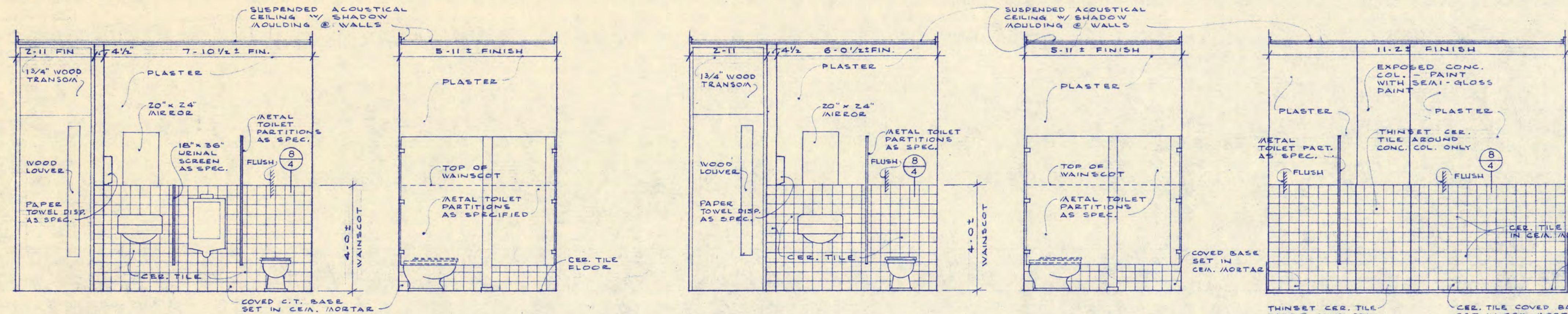
SECT. @ BOTTOM OF STAIR

TYPICAL METAL STAIR & RAILING DETAILS

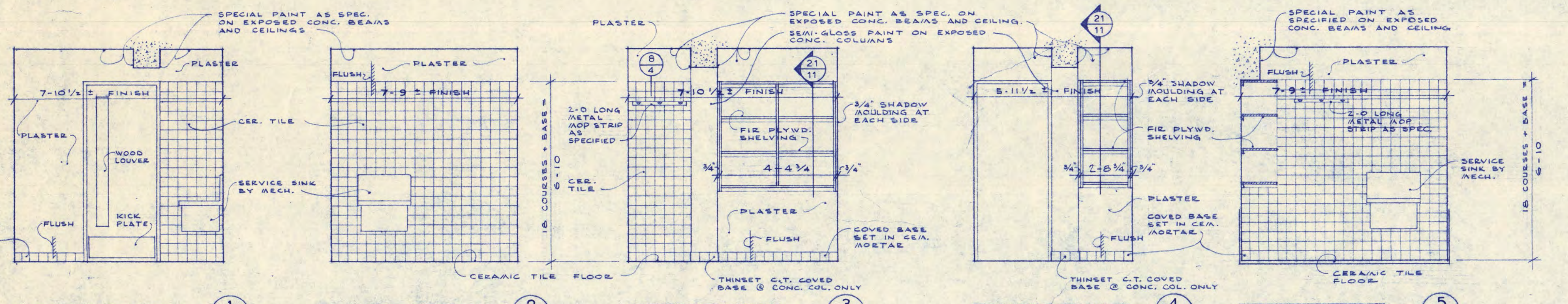




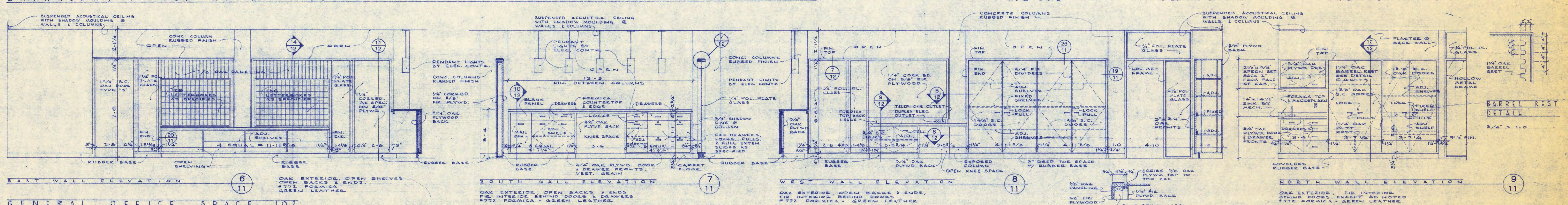
BATHROOM SPACE 113
BATHROOM SPACE 123
BATHROOM SPACES - 237 THROUGH 1337



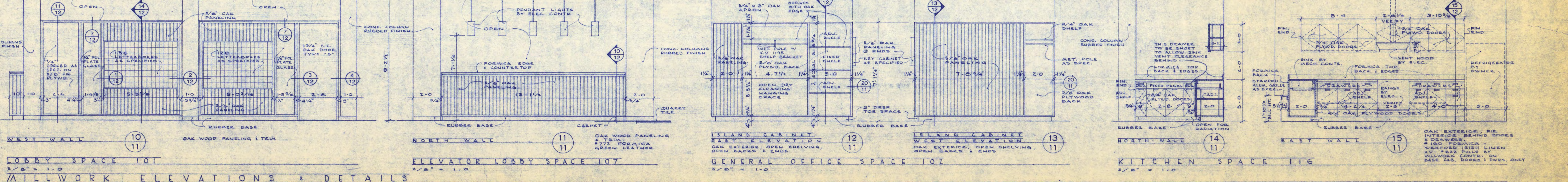
MEN'S TOILET SPACE 111
WOMEN'S TOILET SPACE 112
MEN'S TOILET SPACE 113



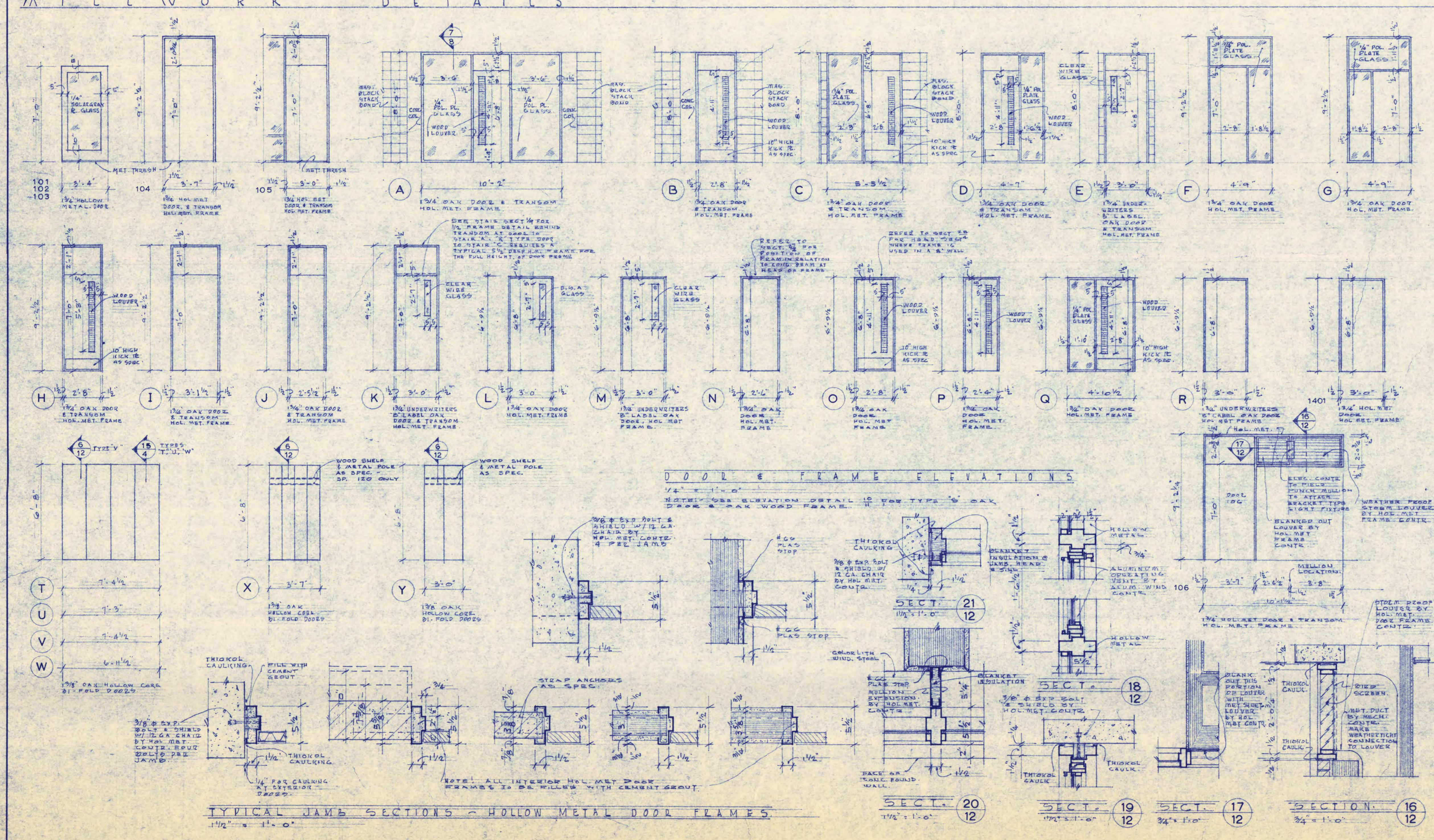
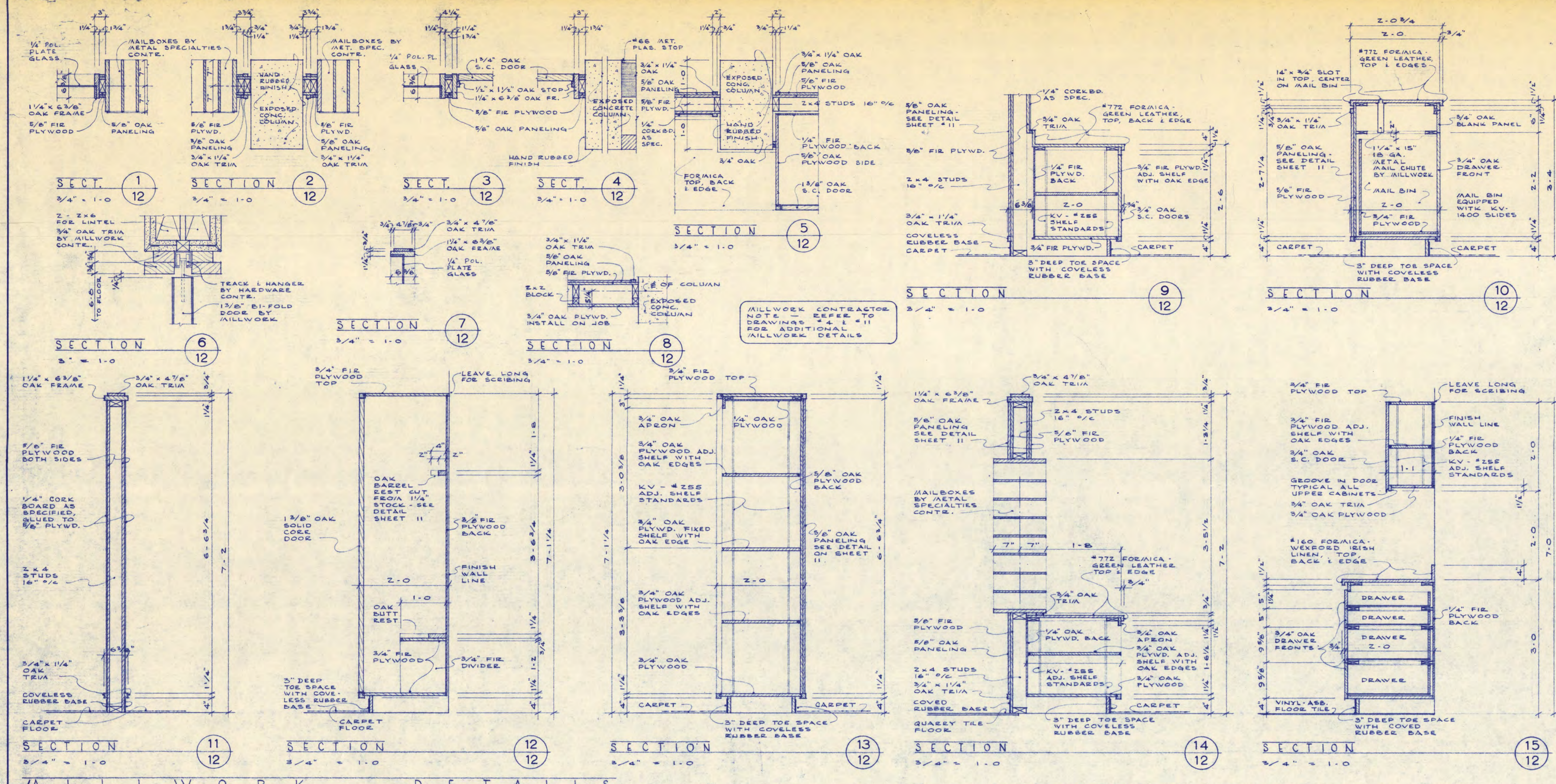
CUSTODIAN SPACES - 210 THROUGH 1310
CUSTODIAN SPACE 1316



GENERAL OFFICE SPACE 102
BARREL REST DETAIL



LOBBY SPACE 101
ELEVATOR LOBBY SPACE 107
GENERAL OFFICE SPACE 107
KITCHEN SPACE 118



ROOM & SPACE		FLOORING	FINISH	WALLS	CEILING	TRIM	REMARKS
BASEMENT FLOOR							
01	ELEVATOR LOBBY						
02	CORRIDOR						
03	CENTRAL CUSTODIAL						
04	TOILET						
05	STUDY						
06	TELEVISION						
07	TRANSFORMER VAULT						
08	MECHANICAL						
09	LAUNDRY						
10, 11	CRANE SPACE						
STAIR "A"							
STAIR "B"							
FIRST FLOOR							
101	LOBBY						
101	GEN. OFF. 2-STORE						
102	ISSUE						
103	OFFICE						
104	OFFICE						
105	LOUNGE						
106	WAITING LOUNGE						
107	ELEVATOR LOBBY						
108, 109, 110	CORRIDOR						
111	MENS TOILET						
112	WOMENS TOILET						
113	BATHROOM						
114	BEDROOM						
115, 120	CLOSET						
116	KITCHEN						
117	DINING ROOM						
118	LIVING ROOM						
119	CORRIDOR						
122	UTILITY						
123	BATHROOM						
124, 125	BEDROOM						
121	LINEIN CLOSET						
126	CUSTODIAN						
127, 128, 129, 130, 131, 132	BEDROOM						
133	ACTIVITY ROOM						
134	CORRIDOR						
135	BATHROOM						
136	CUSTODIAN						
137	BEDROOM WARDROBES						
STAIR "A"							
STAIR "B"							
STAIR "C"							
STAIR "D"							
SECOND FLOOR THROUGH THIRTEENTH FLOOR							
201, 301, 401, 501, 601, 701, 801, 901, 1001, 1101, 1201, 1301	ELEVATOR LOBBY						
102 TO 203, 302 TO 305, 402 TO 405, 502 TO 505, 602 TO 605, 702 TO 705, 802 TO 805, 902 TO 905, 1002 TO 1005, 1102 TO 1105, 1202 TO 1205, 1302 TO 1305	CORRIDOR						
204 TO 206, 306 TO 308, 406 TO 408, 506 TO 508, 606 TO 608, 706 TO 708, 806 TO 808, 906 TO 908, 1006 TO 1008, 1106 TO 1108, 1206 TO 1208, 1306 TO 1308	BATHROOM						
209, 309, 409, 509, 609, 709, 809, 909, 1009, 1109, 1209, 1309	LINEIN HOUSE STOR.						
210, 310, 410, 510, 610, 710, 810, 910, 1010, 1110, 1210, 1310	CUSTODIAN STORAGE						
211, 311, 411, 511, 611, 711, 811, 911, 1011, 1111, 1211	ACTIVITY ROOM						
212 TO 214, 312 TO 314, 412 TO 414, 512 TO 514, 612 TO 614, 712 TO 714, 812 TO 814, 912 TO 914, 1012 TO 1014, 1112 TO 1114, 1212 TO 1214, 1312 TO 1314	BEDROOM						
215 TO 218, 315 TO 318, 415 TO 418, 515 TO 518, 615 TO 618, 715 TO 718, 815 TO 818, 915 TO 918, 1015 TO 1018, 1115 TO 1118, 1215 TO 1218, 1315 TO 1318	RESIDENT ASSISTANT						
219, 319, 419, 519, 619, 719, 819, 919, 1019, 1119, 1219, 1319	ENTRANCE						
1321, 1322, 1323, 1324, 1325, 1326, 1327, 1328, 1329, 1330, 1331, 1332, 1333	BEDROOM WARDROBES						
STAIR "A"							
STAIR "B"							
STAIR "C"							
STAIR "D"							
PENTHOUSE							
1401	STAIR "E"						
1402	MECH. EQUIP ROOM						
1403	MACHINE PLATFORM						