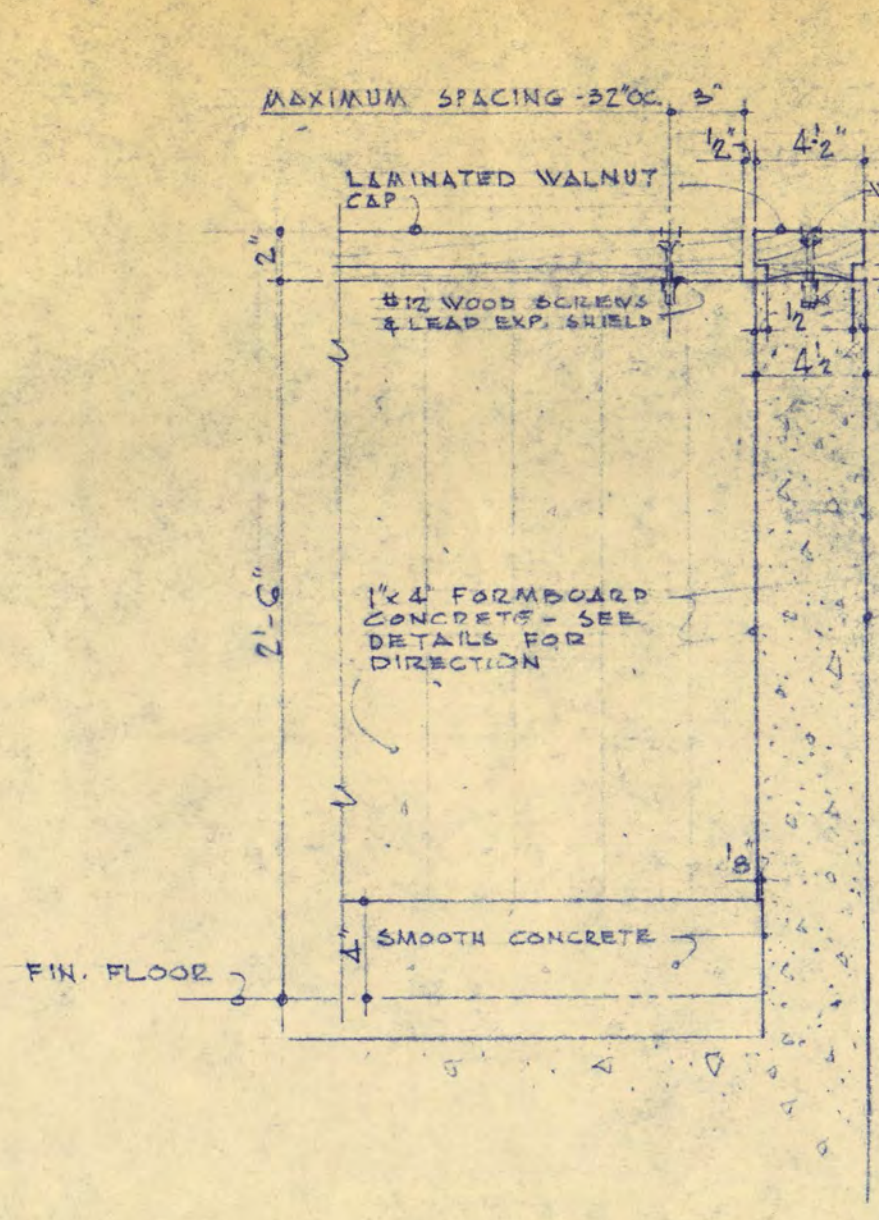
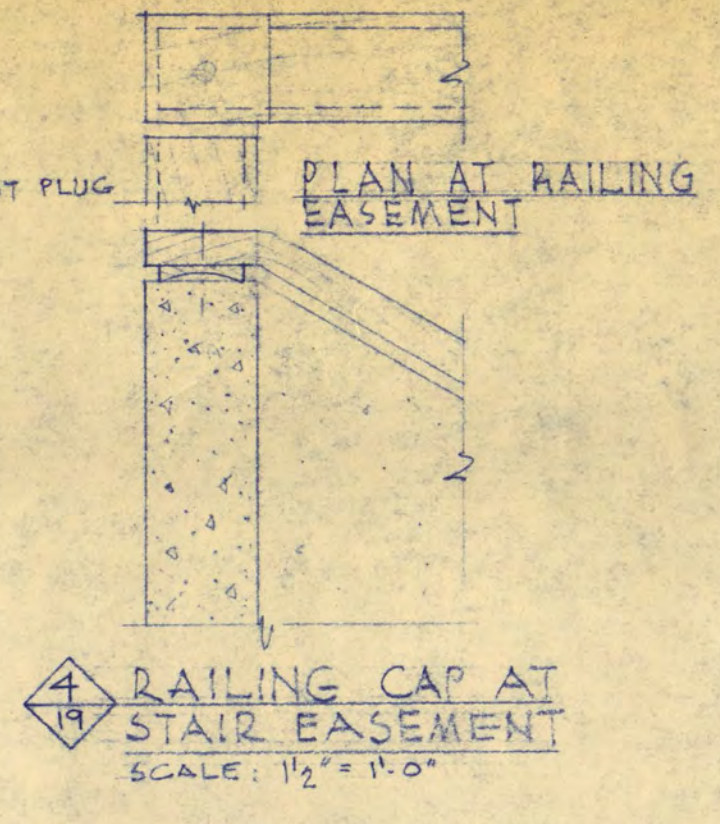


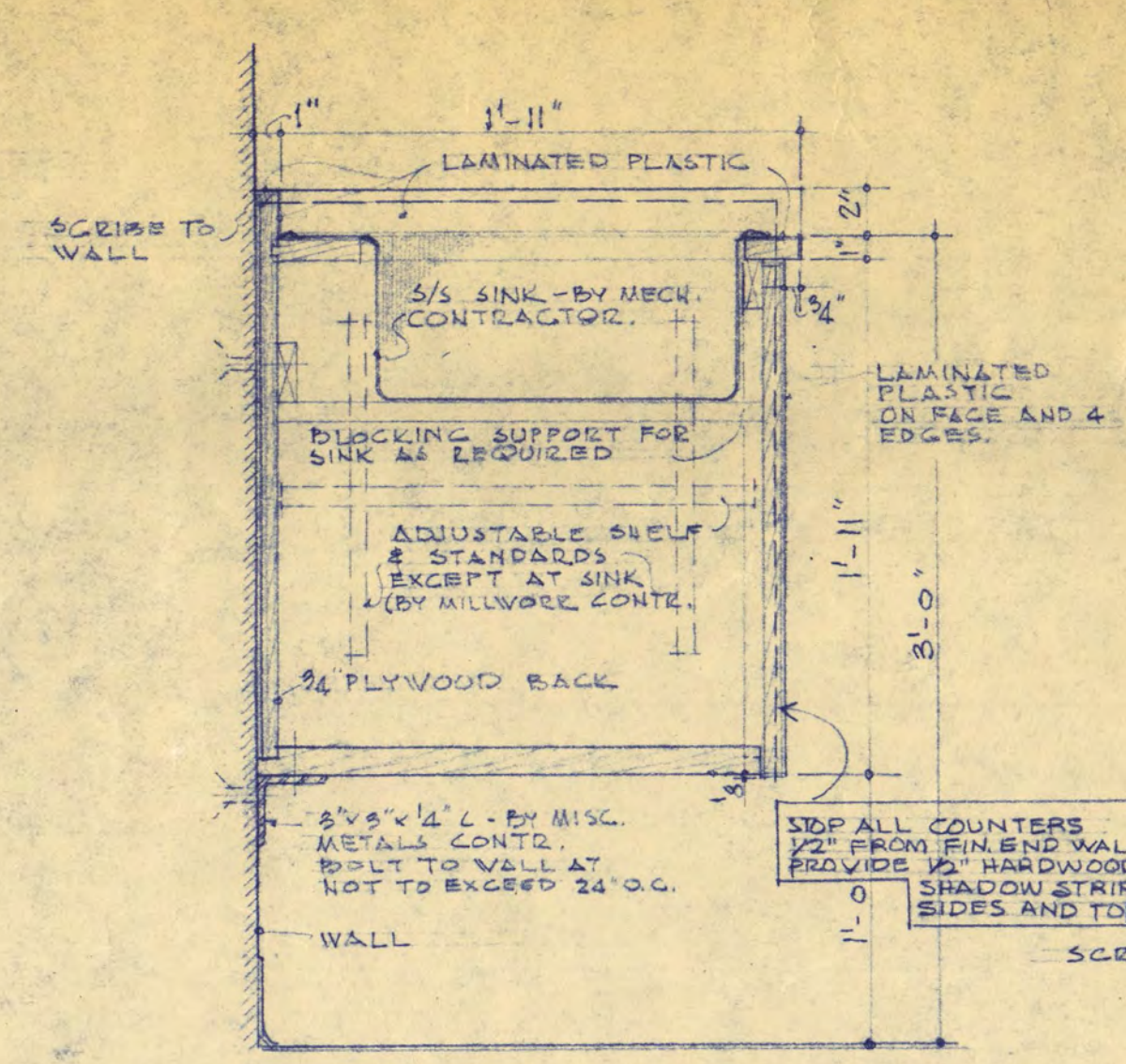
TYPICAL HANDRAIL  
DETAIL SCALE: 3/4" = 1'-0"



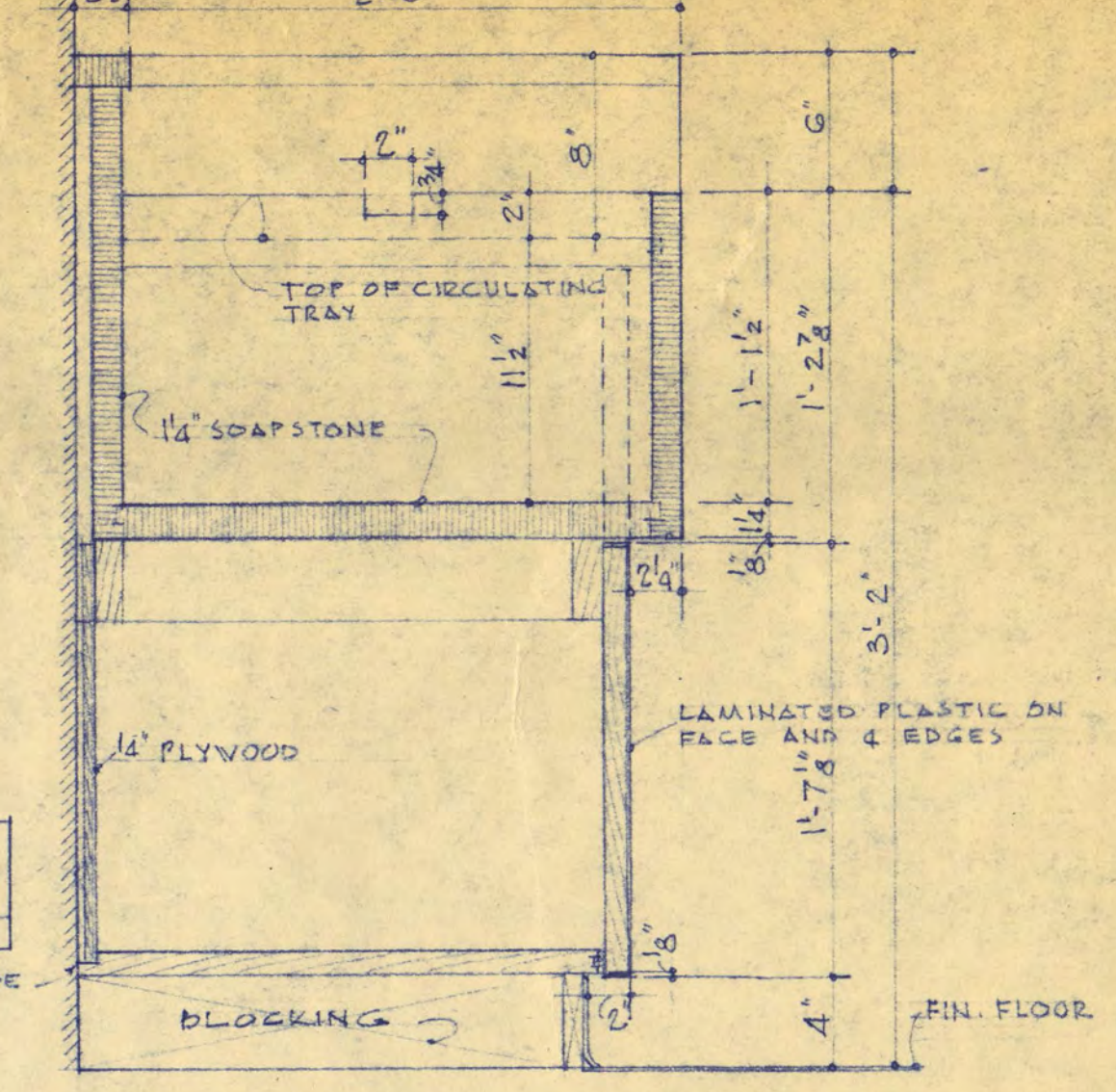
RAILING CAP DETAIL  
SCALE: 1/2" = 1'-0"



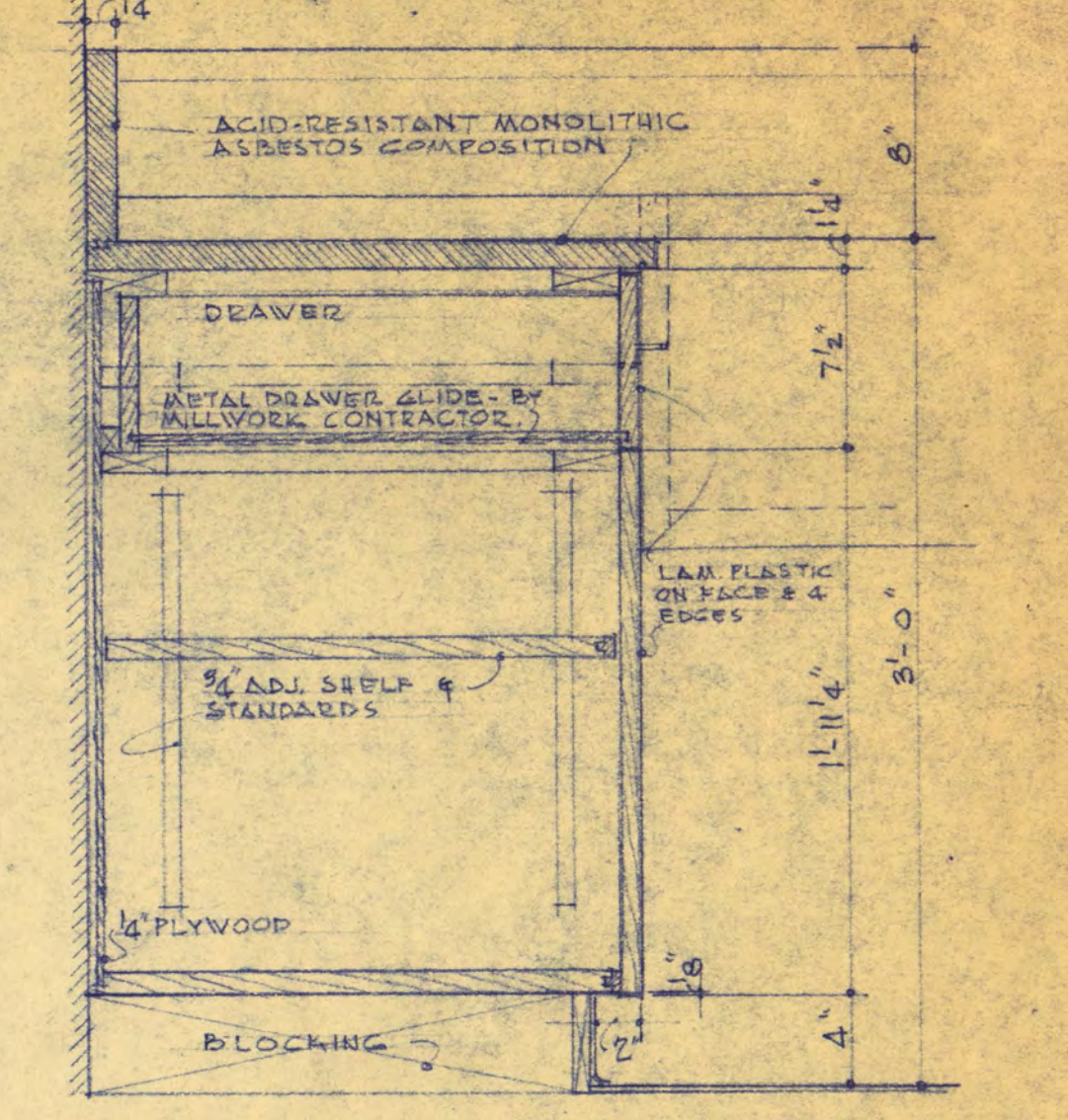
PLAN AT RAILING  
EASEMENT  
RAILING CAP AT  
STAIR EASEMENT  
SCALE: 1/2" = 1'-0"



TYPICAL BASE CABINET (AT WALL)  
SCALE: 1/2" = 1'-0"

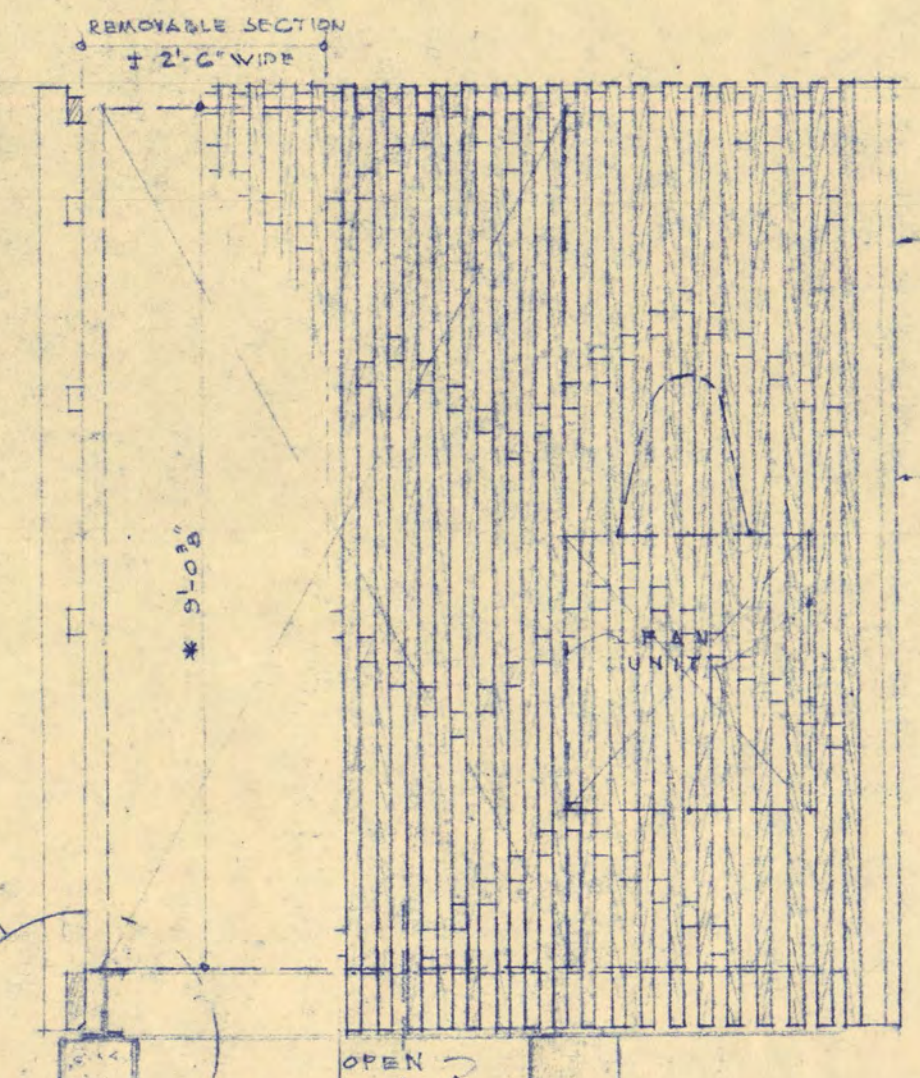
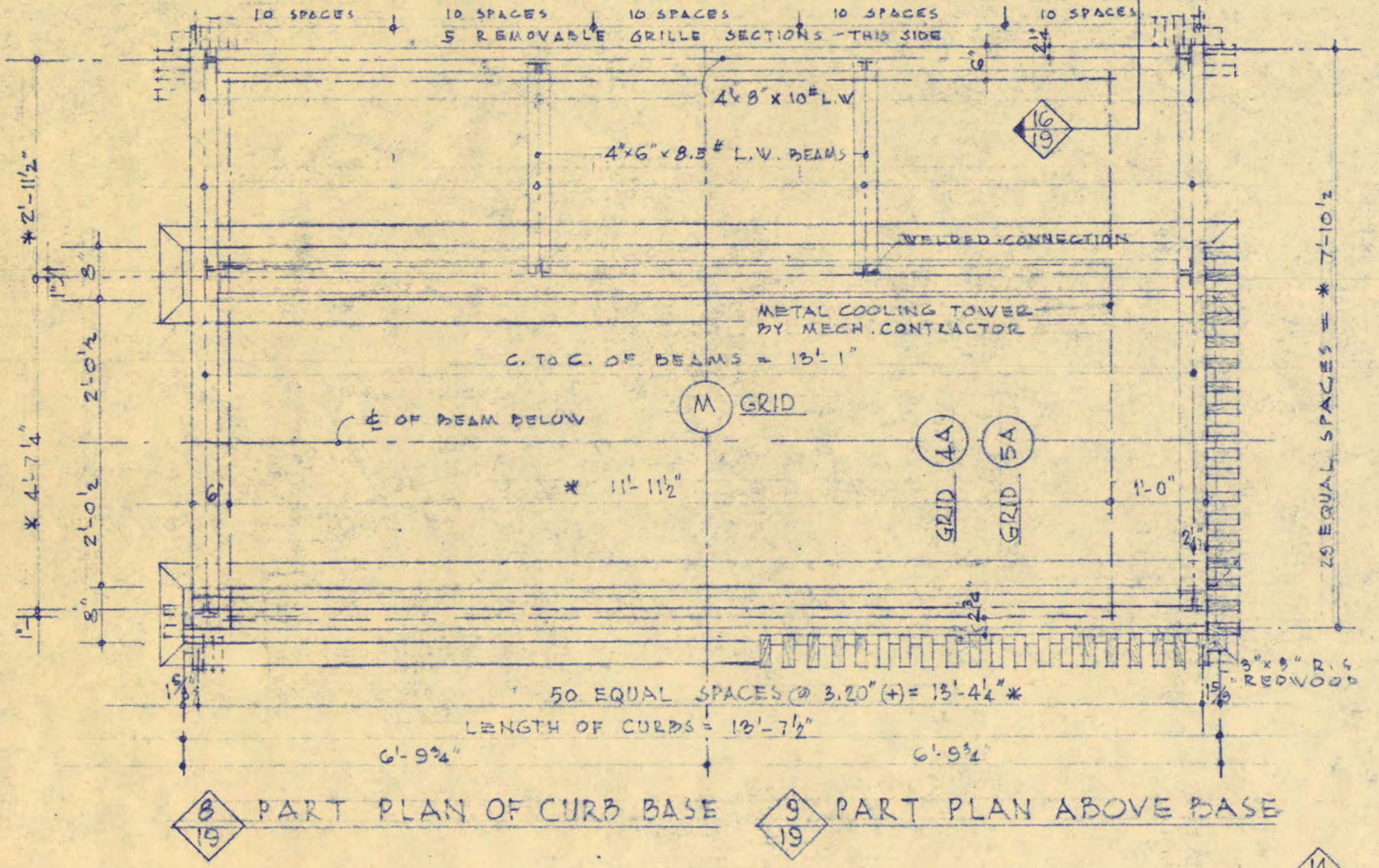


SINK CABINET - DARK ROOMS



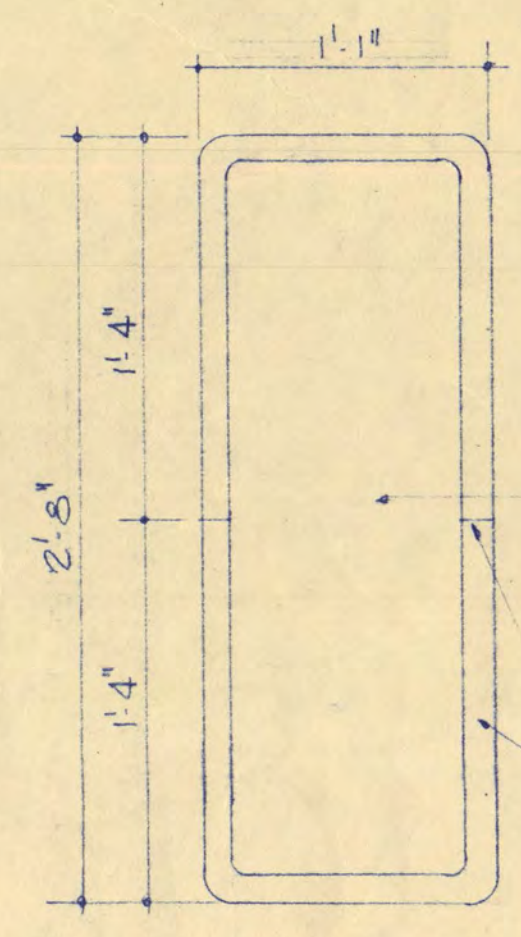
BASE CABINET - DARK ROOMS

TYPICAL STAIR HANDRAIL (INTERIOR)  
SCALE: 1/2" = 1'-0"



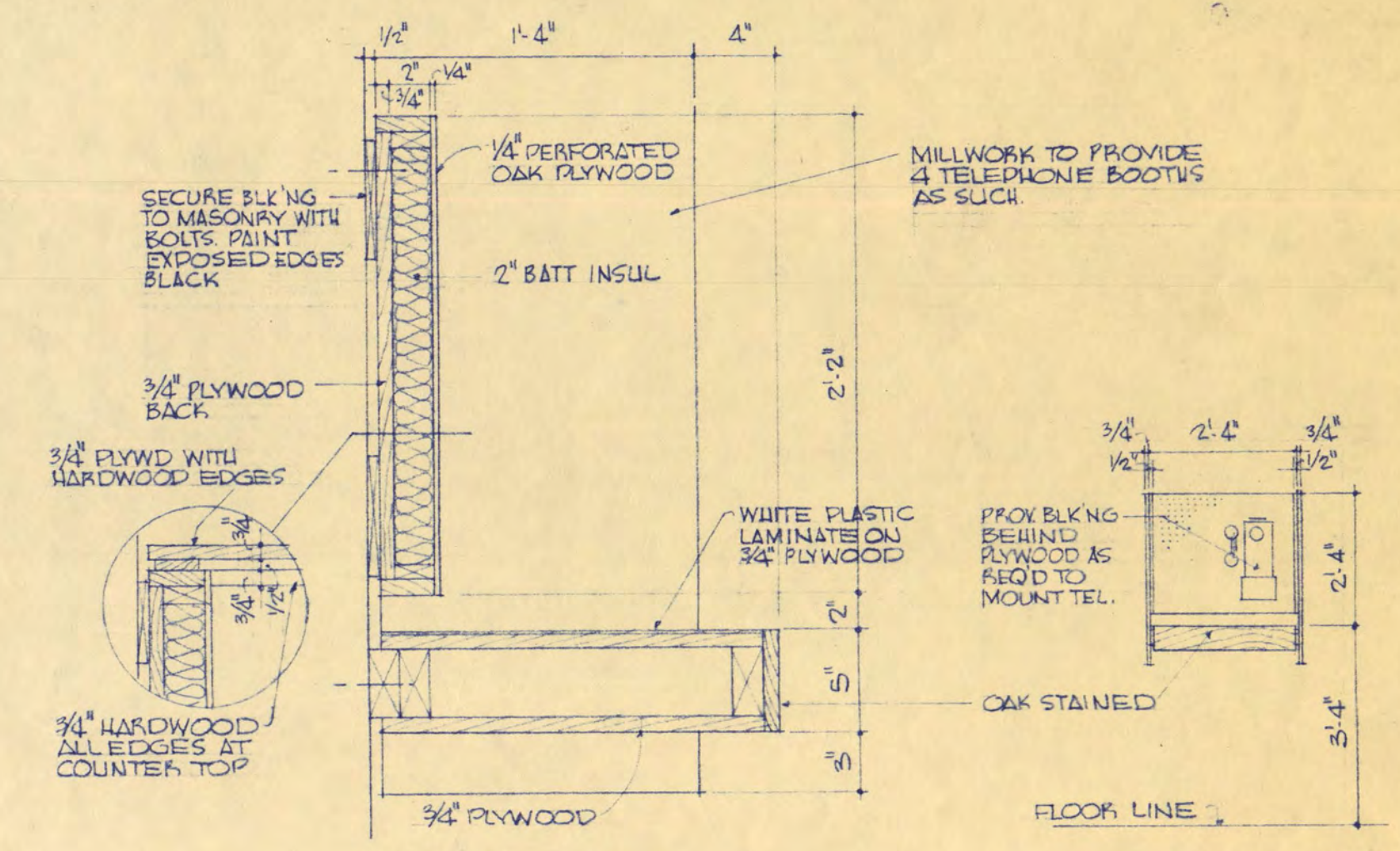
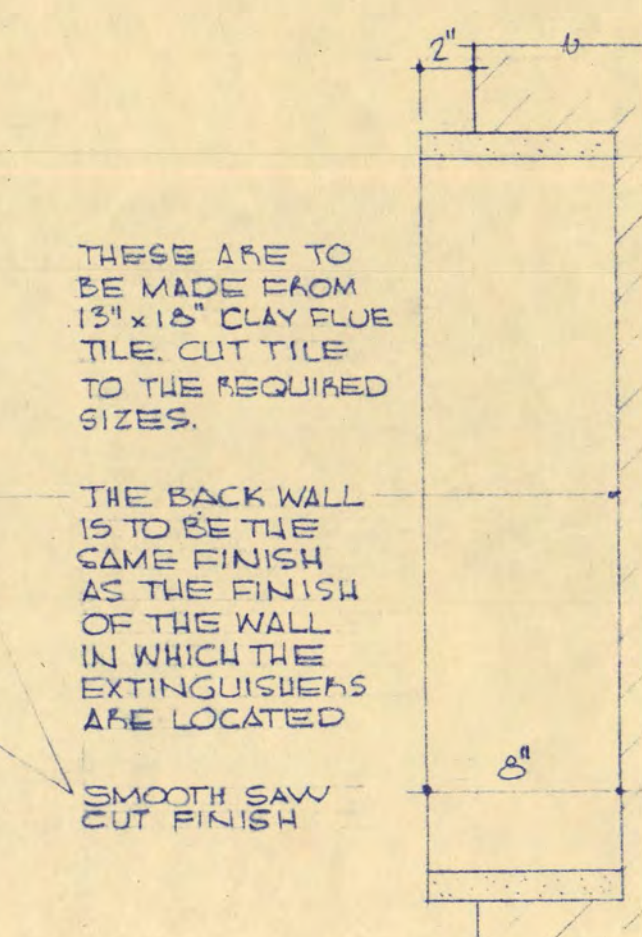
PART SECTION  
TRANSVERSE SCALE: 1/2" = 1'-0"

FINISH WITH CABOT'S  
RANCH BLUE ONE COAT  
BEFORE ASSEMBLY  
THE SECOND COAT  
AFTER ALL WOOD IS  
IN PLACE  
ALL NAILS, SCREWS AND  
BOLTS USED IN THE  
FABRICATION AND  
ERECTION OF THIS  
REDWOOD SCREEN  
ARE TO BE ALUMINUM.

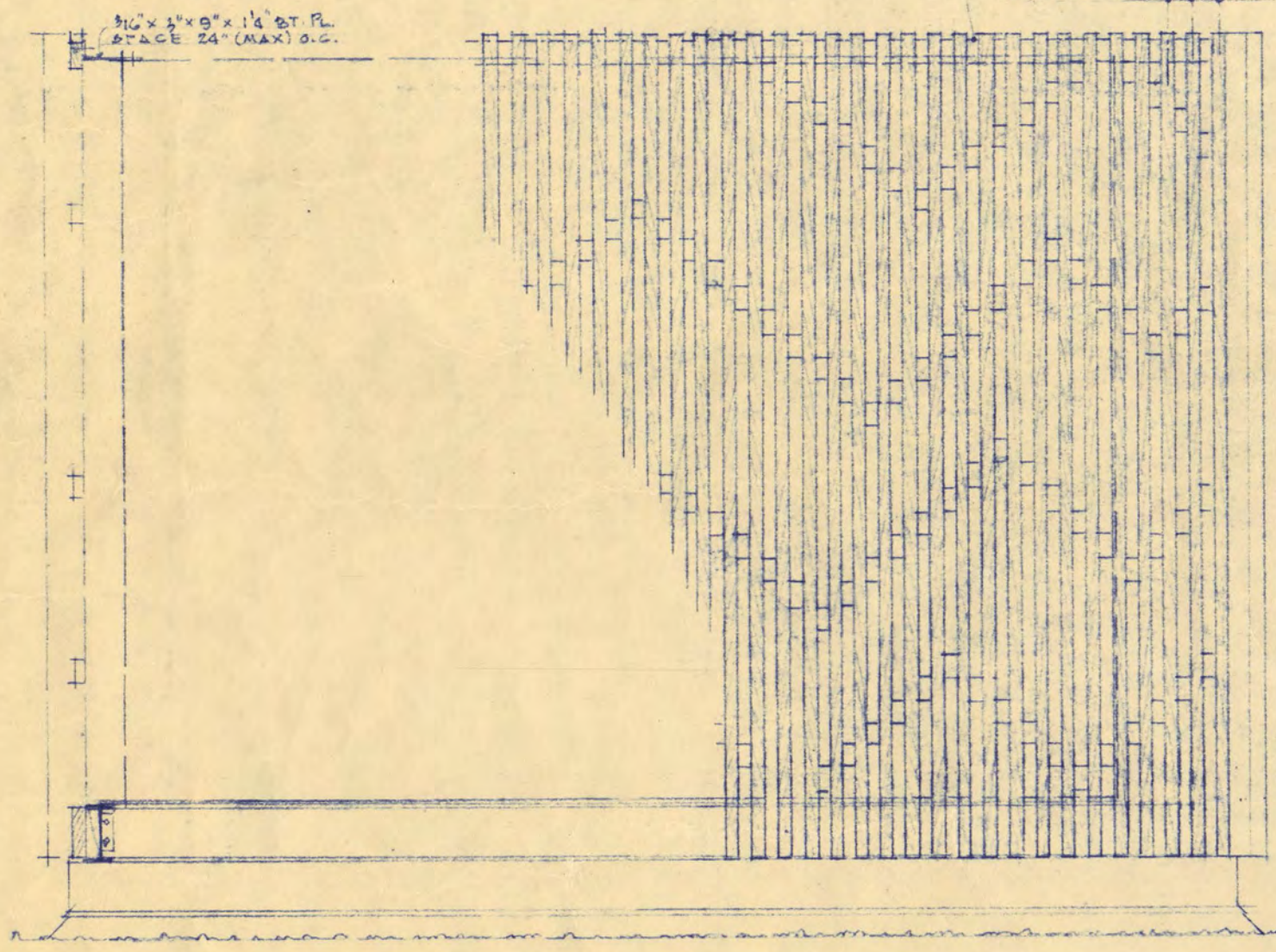


FIRE EXTINGUISHER DETAILS  
SCALE: 1/2" = 1'-0"

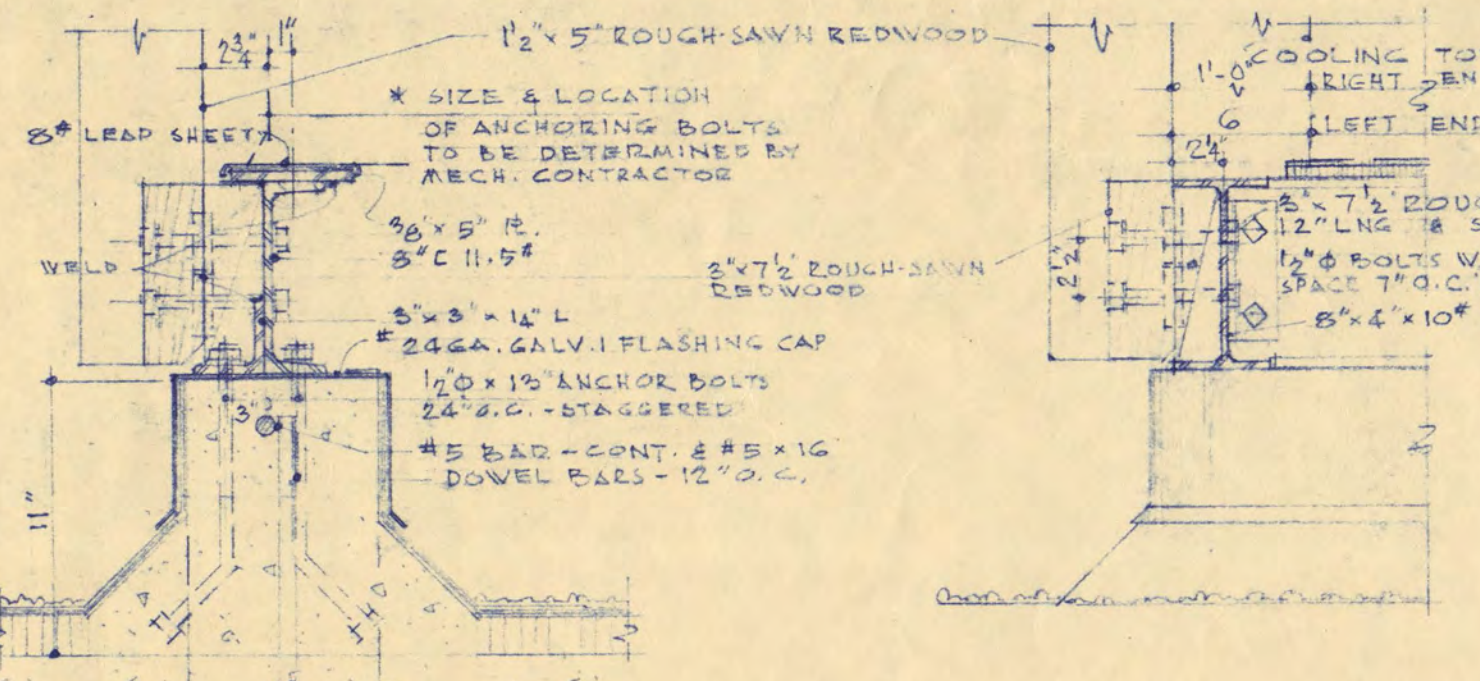
1/2" REQUIRED AND ARE TO BE LOCATED  
AS DIRECTED BY THE ARCHITECT  
PROVIDE 20 1 1/2" x 7 1/2" MODULAR FLUE TILE FOR PLACEMENT  
IN WALLS 8" DEEP PROJECTING FROM WALL 2" SIMILAR  
TO DETAIL ABOVE IN ROOMS A144 A150 A205 A206. FLUE  
TILE SHALL BE PLACED AS DIRECTED BY ARCHITECT



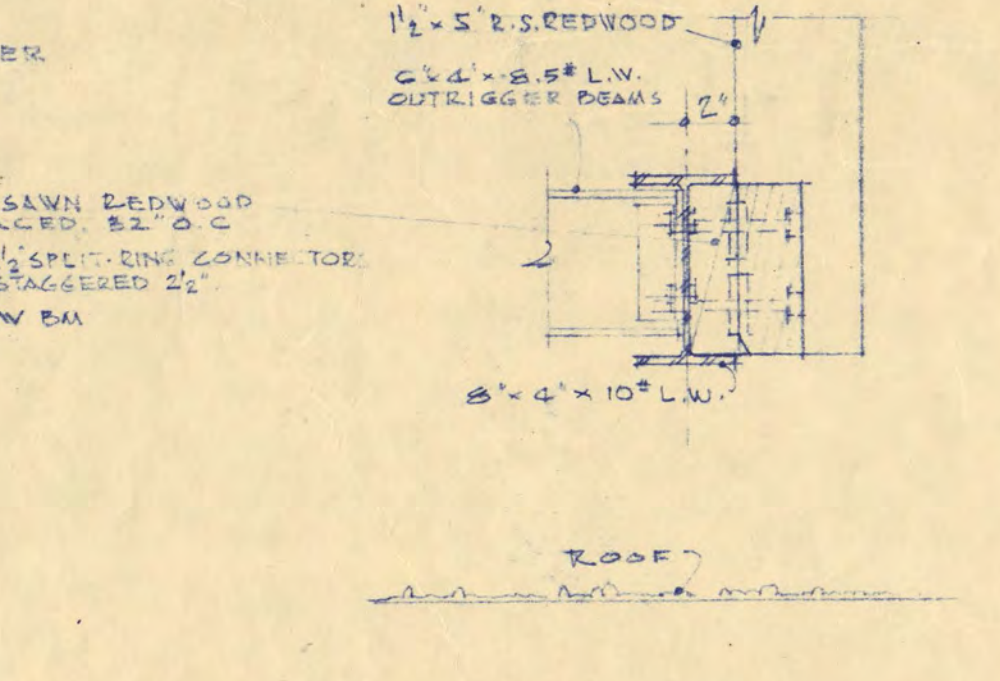
TELEPHONE BOOTH DETAILS (2) REQUIRED IN A102 AND A105  
SCALE: 1/2" = 1'-0"



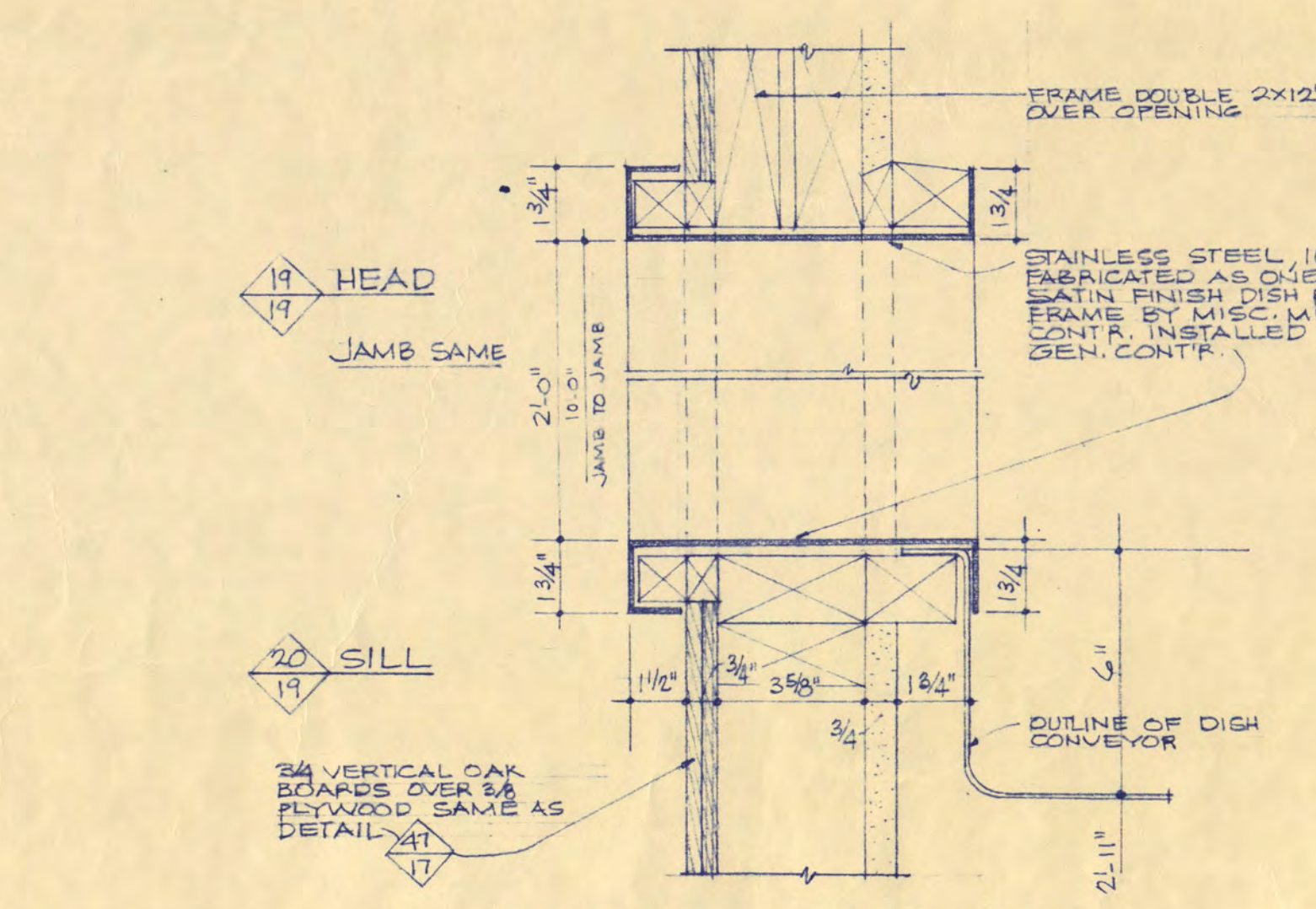
PART SECTION - LONGITUDINAL  
SCALE: 1/2" = 1'-0"



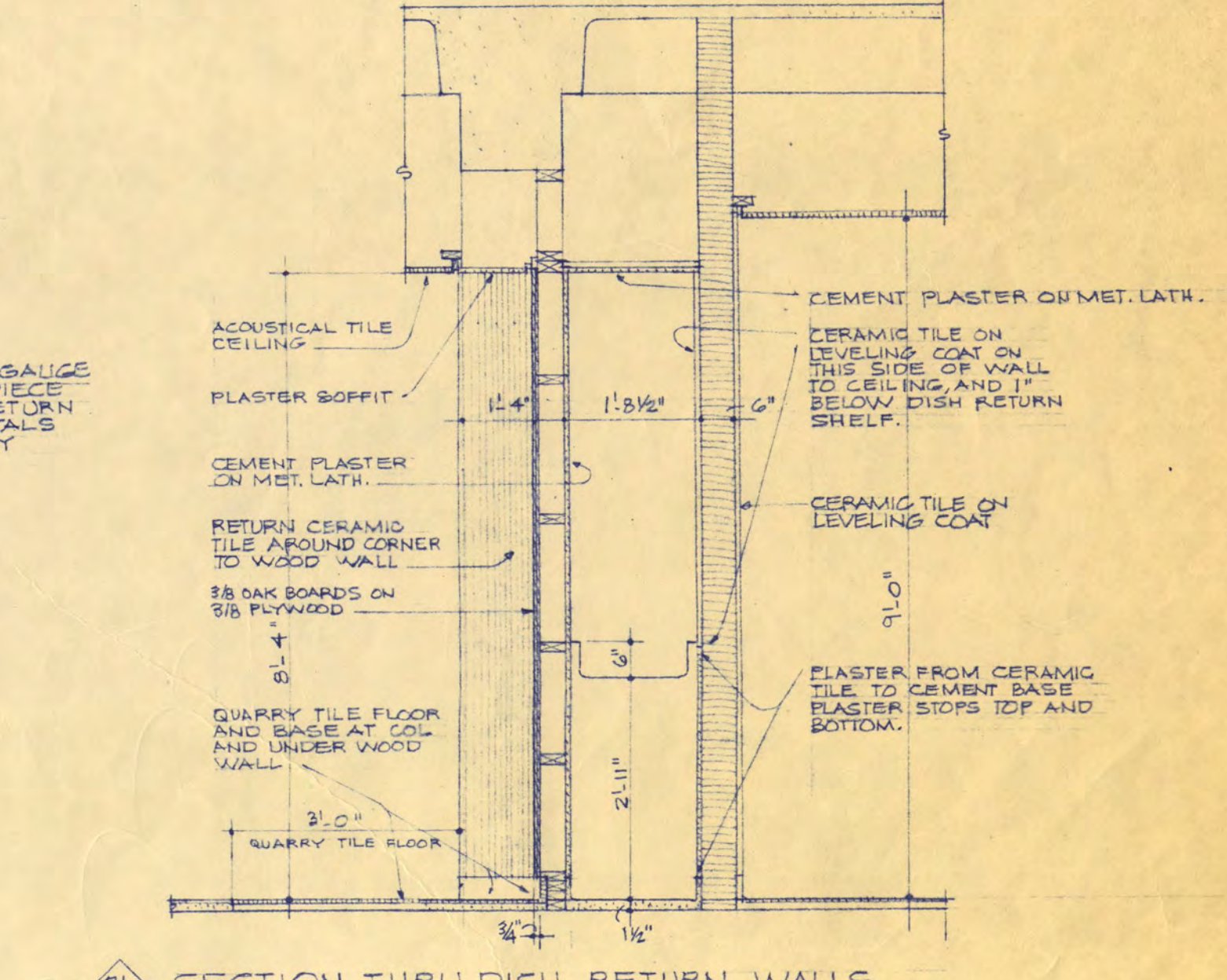
SECTION  
SCALE: 1/2" = 1'-0"



SECTION  
SCALE: 1/2" = 1'-0"



DETAILS THRU STAINLESS STEEL  
DISH RETURN OPENING  
SCALE: 3/8" = 1'-0"  
SEE ELEVATION 2



SECTION THRU DISH RETURN WALLS  
SCALE: 1/2" = 1'-0"

COOLING TOWER DETAILS

NOTE: DIMENSIONS DENOTED WITH \* INDICATE DIMENSIONS THAT  
WILL VARY WITH THE MANUFACTURE OF COOLING TOWERS FURNISHED BY  
THE MECHANICAL CONTRACTOR.

STUDENT UNION  
FOR ST. CLOUD STATE COLLEGE

STATE COLLEGE BOARD  
STATE OF MINNESOTA  
ST. PAUL MINNESOTA

TRAYNOR and HERMANSON ARCHITECTS  
ST. CLOUD, MINNESOTA  
STRUCTURAL ENGINEERS - JOHNSTON & SAHLMAN MINNEAPOLIS  
CONSULTING ENGINEERS - ORR, SHELEN, MAYERON  
ASSOCIATED INC. MINNEAPOLIS

APPROVED BY: \_\_\_\_\_ DATE: 10/18/64  
APPROVED BY: \_\_\_\_\_  
APPROVED BY: \_\_\_\_\_ CHECKED: STB

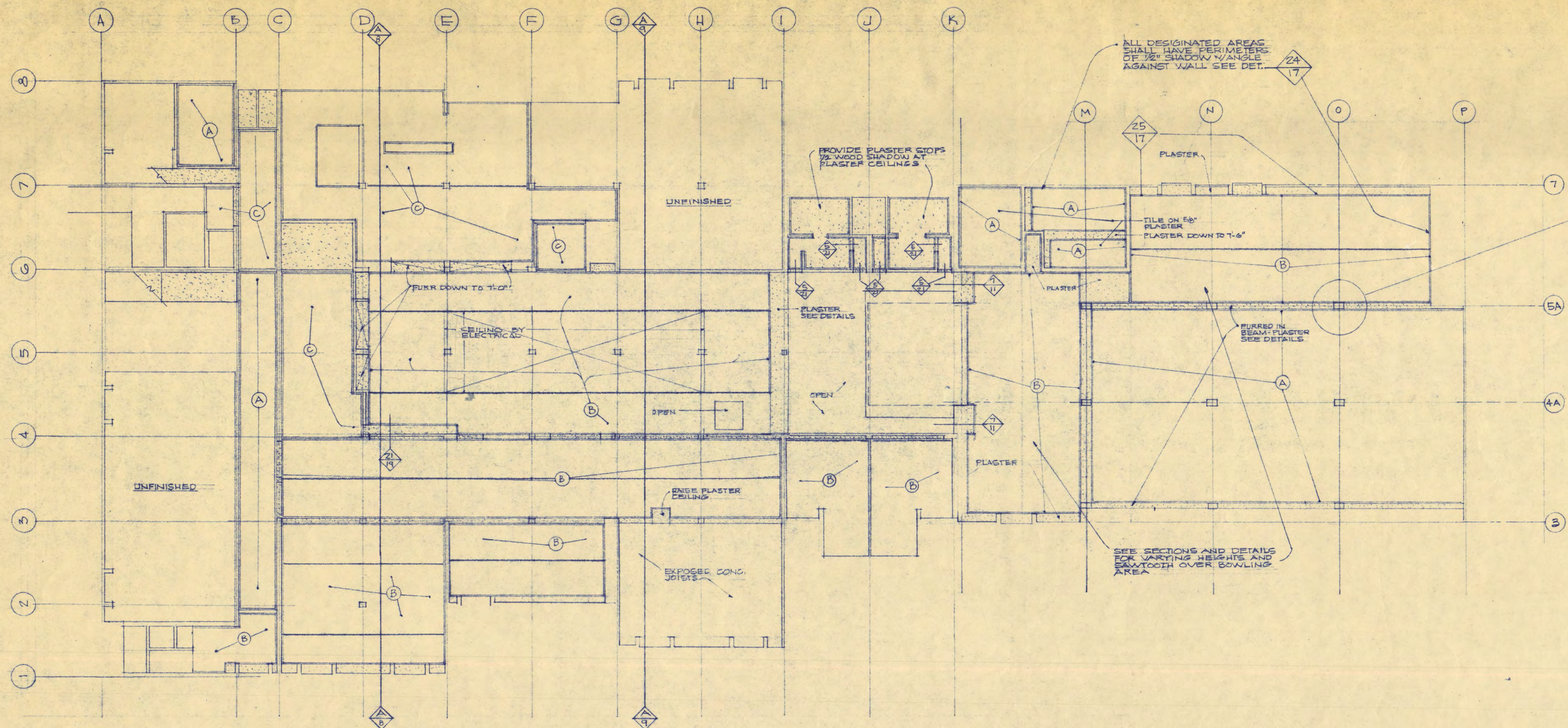
INTERIOR ELEVATIONS DETAILS

SHEET NO.  
19  
OF 21  
PROJECT NO.  
E-2

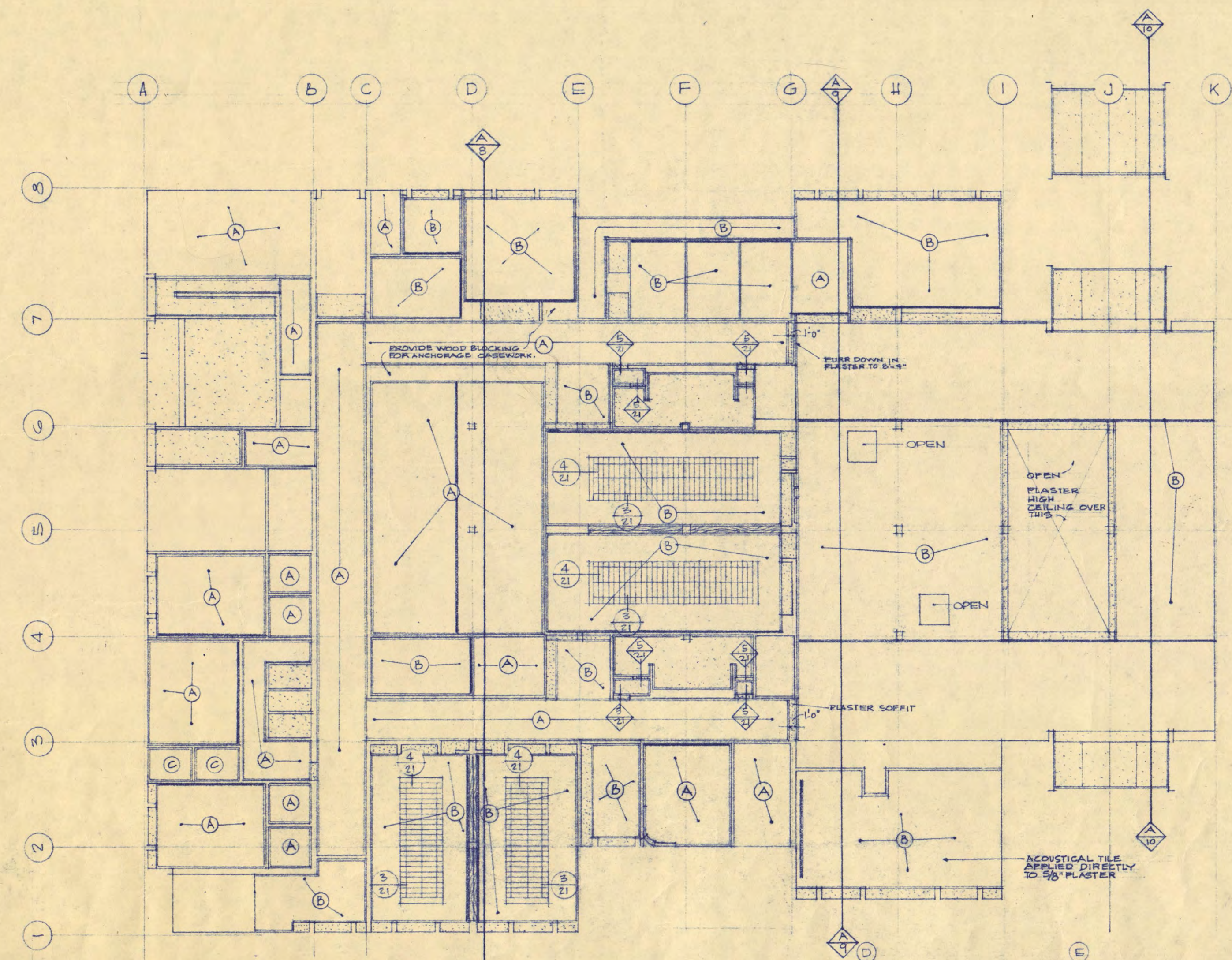
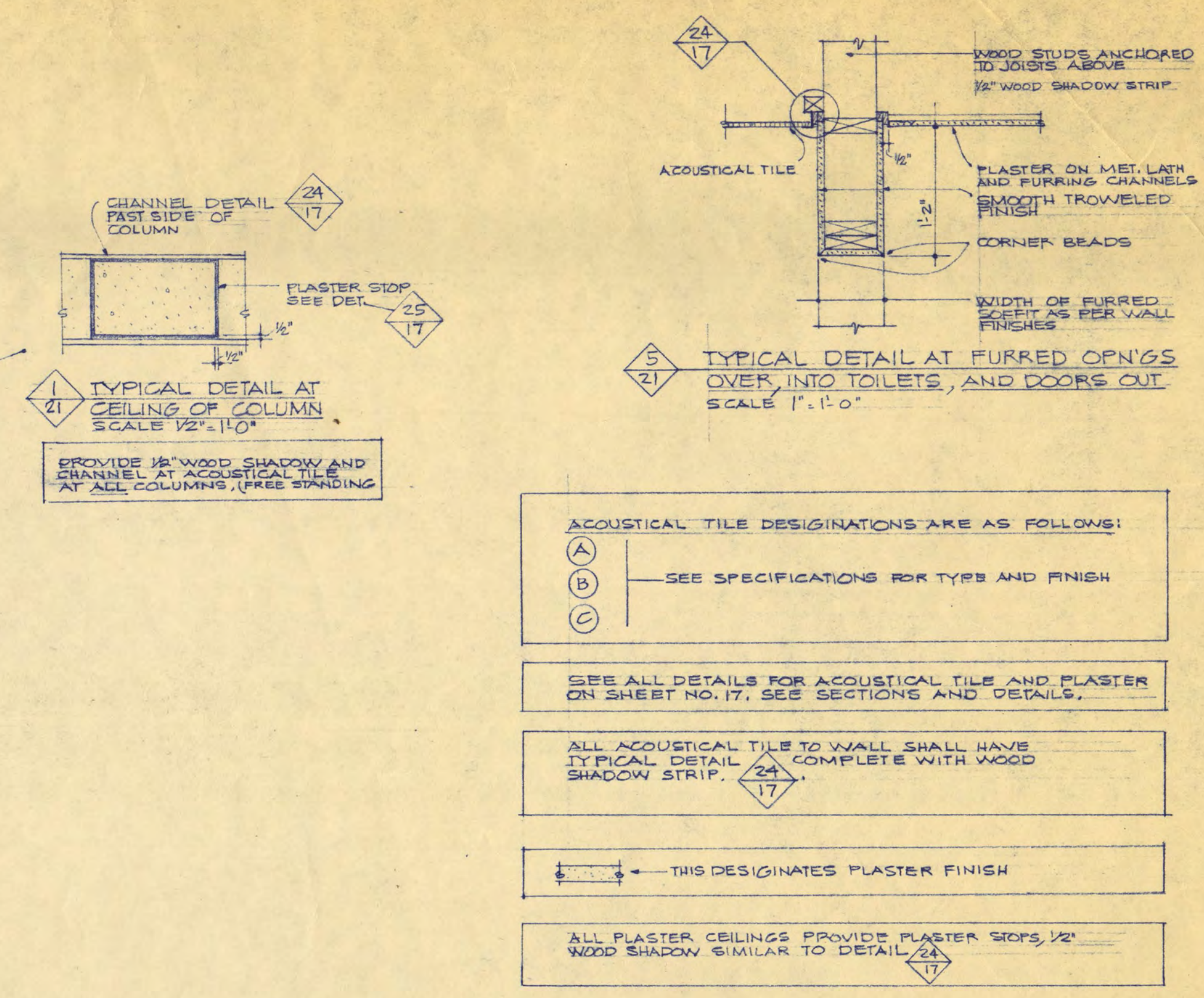




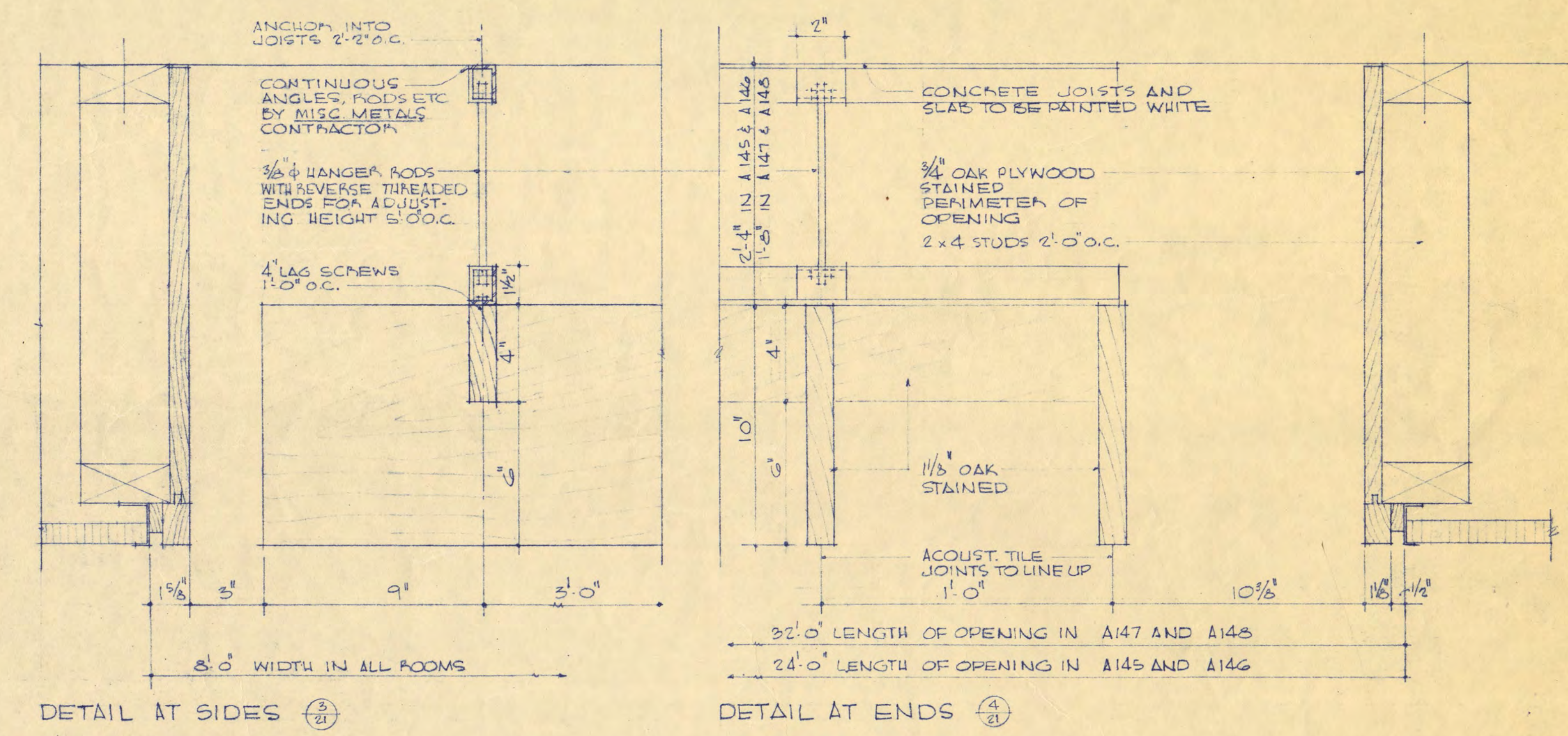




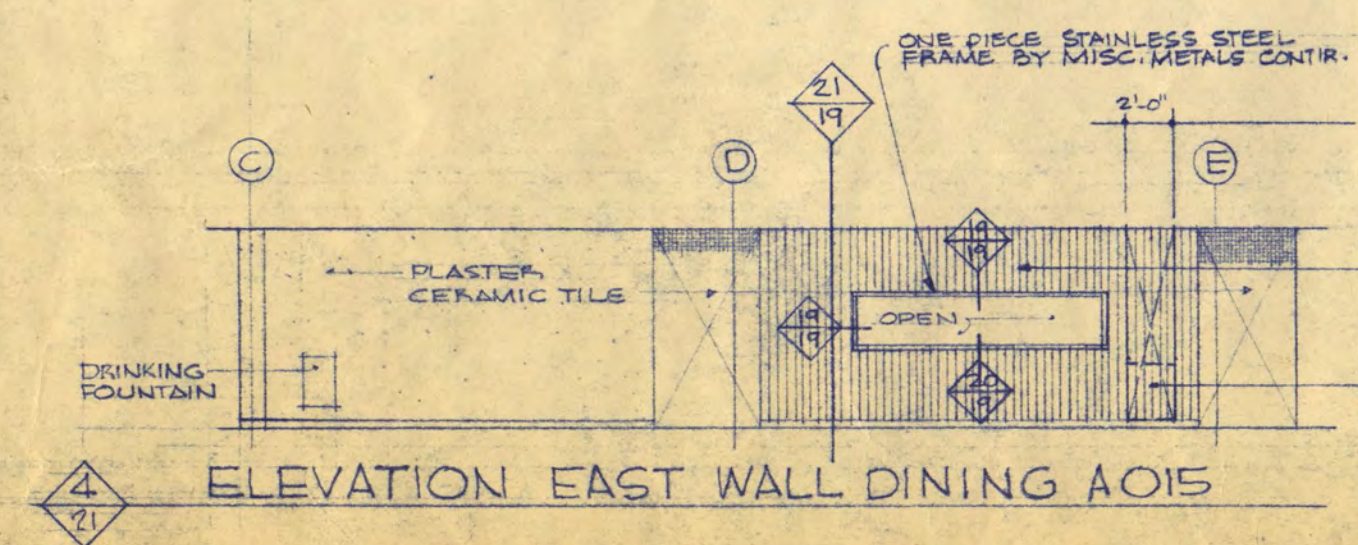
GROUND FLOOR REFLECTED CEILING PLAN  
SCALE 1/16" = 1'-0"



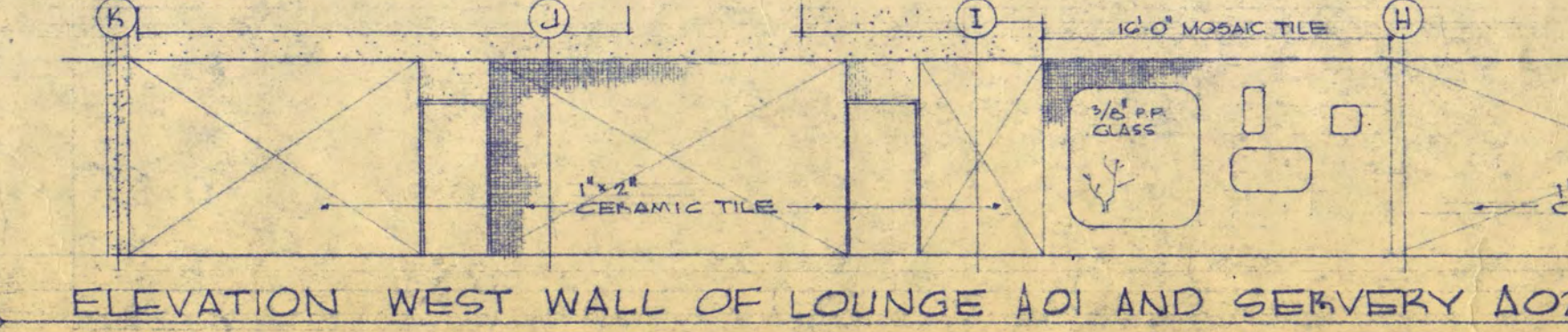
FIRST FLOOR REFLECTED CEILING PLAN  
SCALE 1/16" = 1'-0"



DETAILS OF WOOD CEILINGS IN CONFERENCE ROOMS A145, A146, A147, A148  
SCALE 3/8" = 1'-0"



ELEVATION EAST WALL OF SERVEY A024 AND LOUNGE A01  
SCALE 1/8" = 1'-0"



STUDENT UNION  
FOR ST. CLOUD STATE COLLEGE

STATE COLLEGE BOARD  
STATE OF MINNESOTA  
ST. PAUL MINNESOTA

TRAYNOR and HERMANSON ARCHITECTS  
ST. CLOUD, MINNESOTA  
STRUCTURAL ENGINEERS - JOHNSTON & SAHLMAN MINNEAPOLIS  
CONSULTING ENGINEERS - ORR, SHELEN, MAYERSON  
ASSOCIATED INC. MINNEAPOLIS

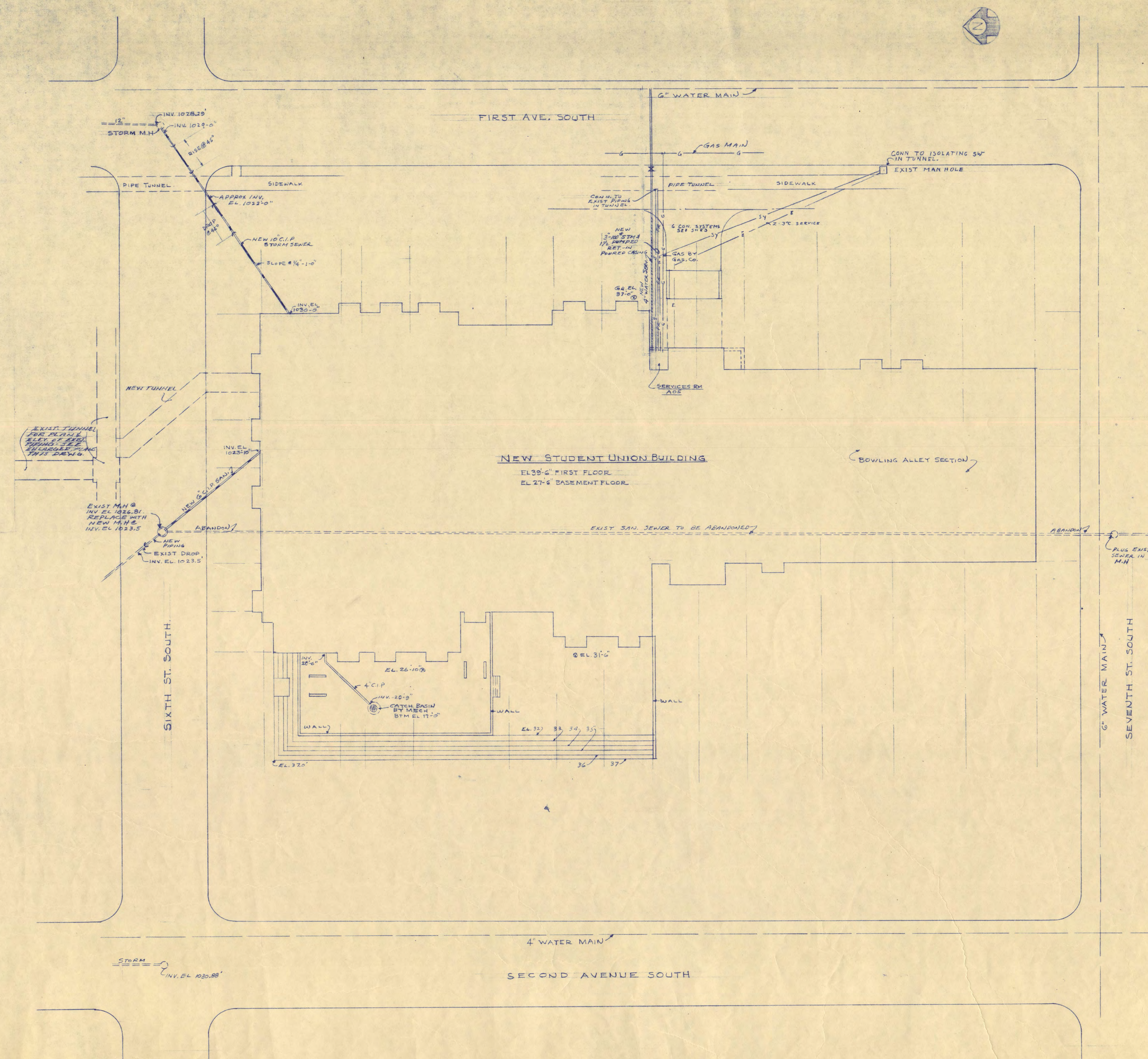
APPROVED BY \_\_\_\_\_ DATE 10-12-64  
 APPROVED BY \_\_\_\_\_ DRAWN BY B.A.S. R.T.H.  
 APPROVED BY \_\_\_\_\_ CHECKED BY R.T.H.

REFLECTED CEILING PLANS

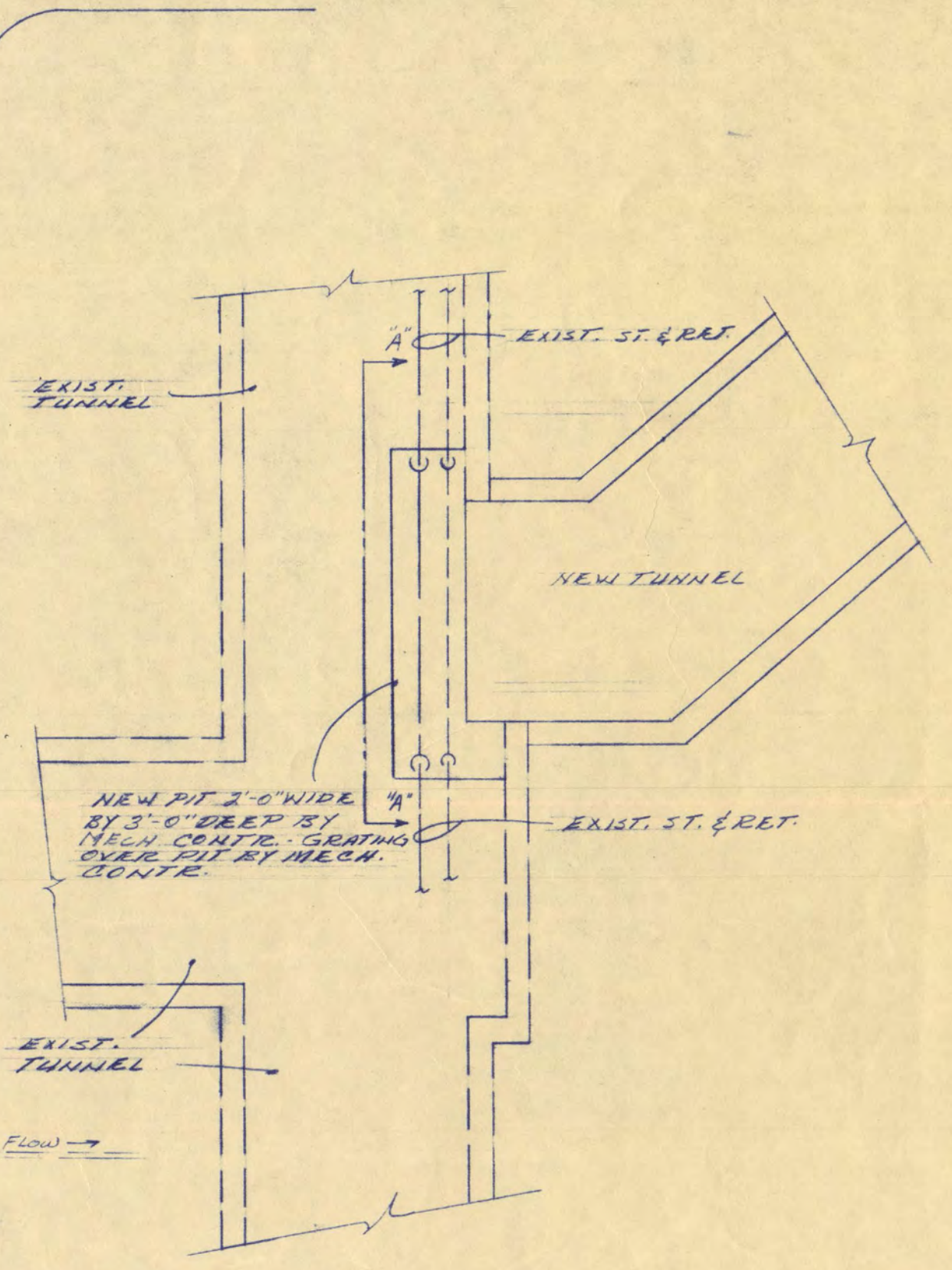
SHEET NO. 21  
OF 21  
PROJECT NO. E-2



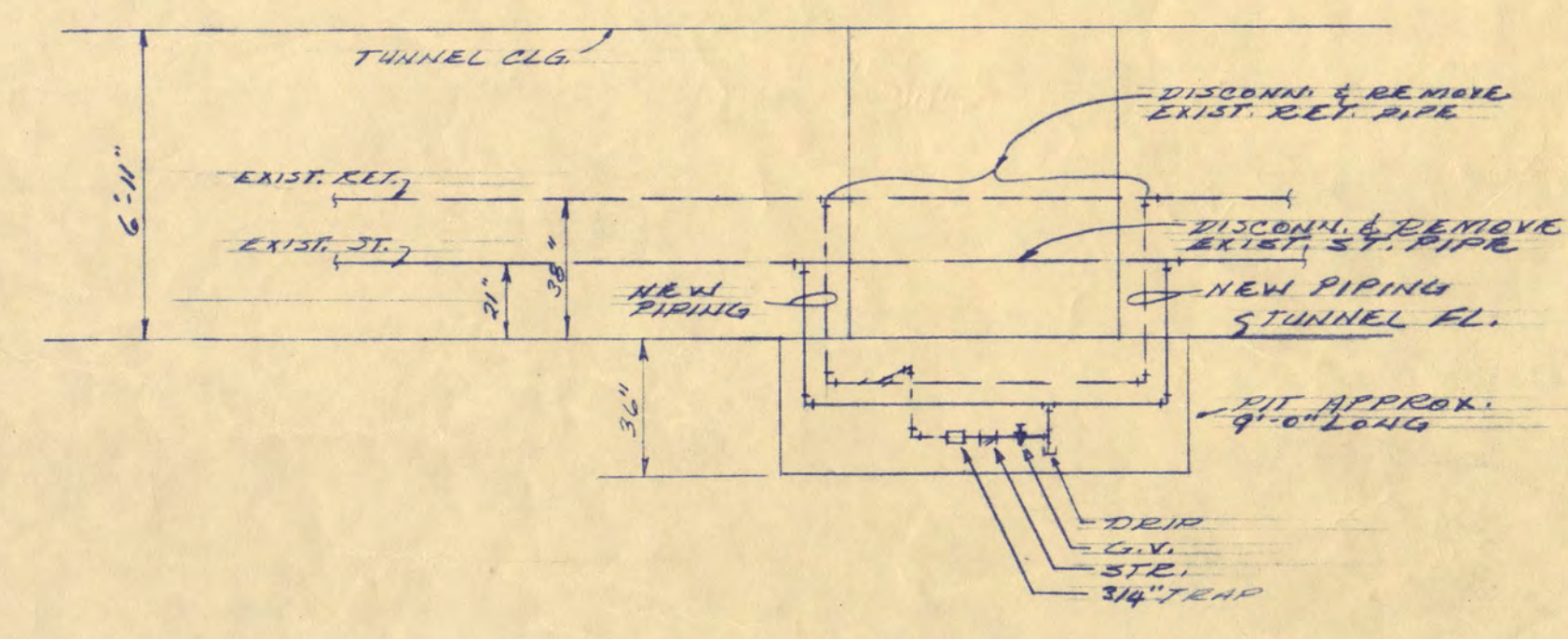
PIPING SYMBOLS	
—S—S—	LOW PRESS. STEAM SUPPLY
—CK—CK—	STEAM CONDENSATE RET. GRAVITY
—PK—PK—	STEAM CONDENSATE RET. PUMPED
—H—H—	HEATING WATER SUP. CIRC.
—H—H—	HEATING WATER RET. CIRC.
—G—G—	GAS
—P—P—	PLUMBING WASTE - AB. BRD. SALV.
—P—P—	PLUMBING VENT
—W—W—	COLD WATER SUPPLY
—H—H—	140° HOT WATER SUPPLY
—H—H—	140° HOT WATER CIRC. RET.
—H—H—	180° HOT WATER SUPPLY
—H—H—	180° HOT WATER CIRC. RET.
—CHWS—CHWS—	CHILLED WATER SUP. - CIRC.
—CHWR—CHWR—	CHILLED WATER RET. - CIRC.
—P—P—	PLUMBING WASTE - UNDER C.I.P.
—P—P—	RAINFLEADERS
—P—P—	WATER SERVICE - C.I.P.
—P—P—	TRANSIT CONDUIT - FOR REFRIG.



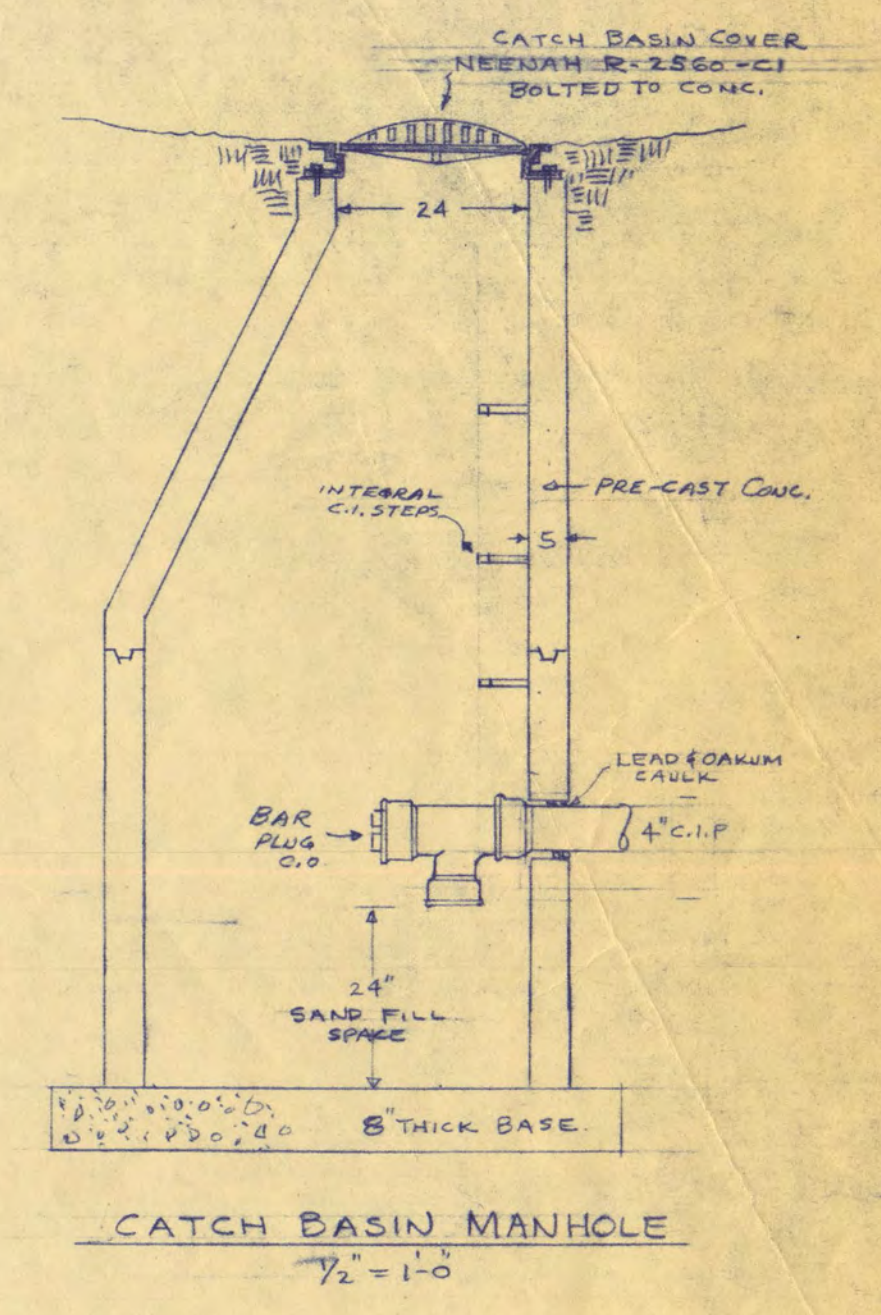
**PLOT PLAN**  
SCALE: 1"=20'-0"



**TUNNEL PLAN**  
SCALE 1/4"=1'-0"



**SECTION A-A**  
SCALE 1/4"=1'-0"



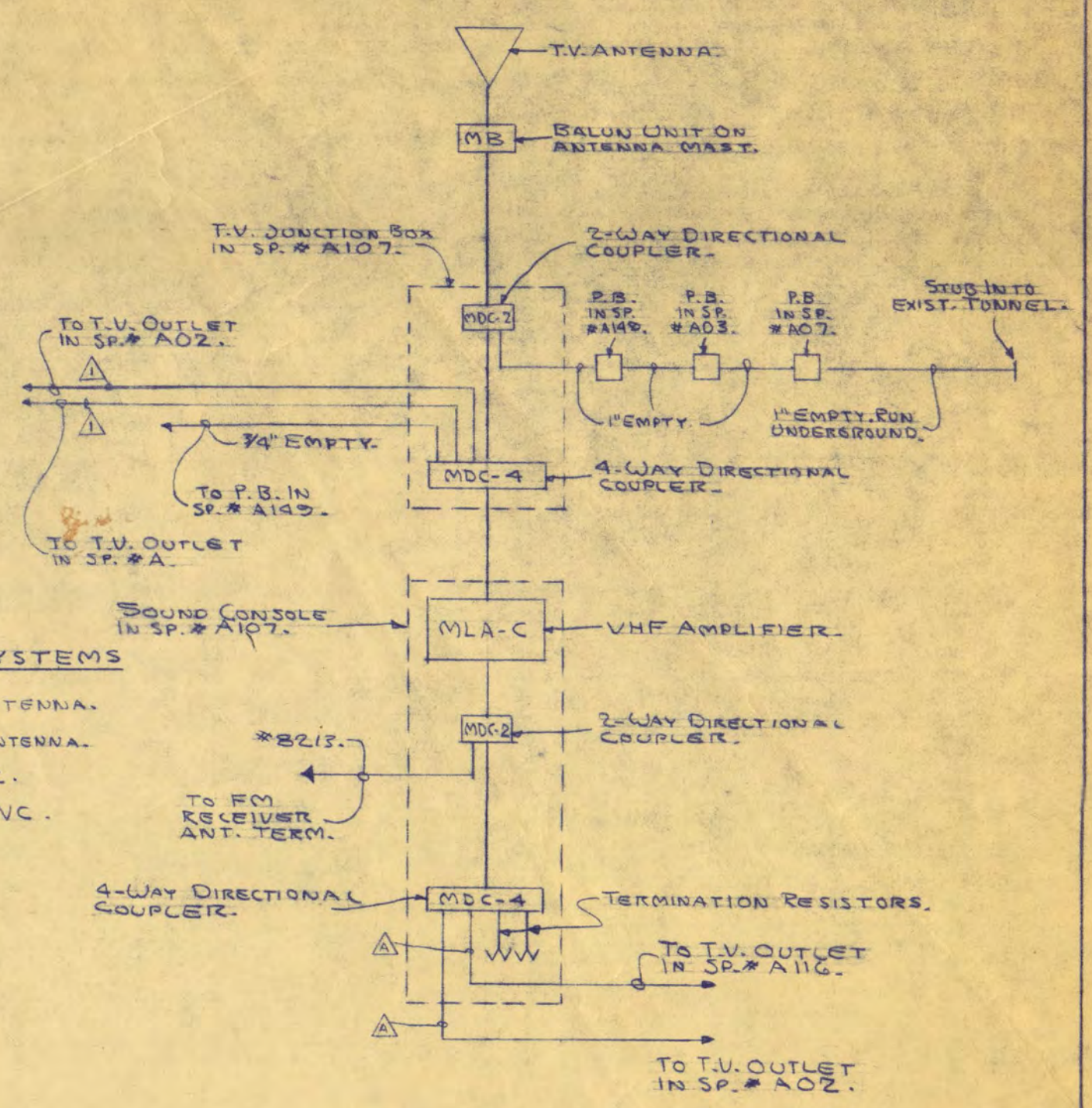
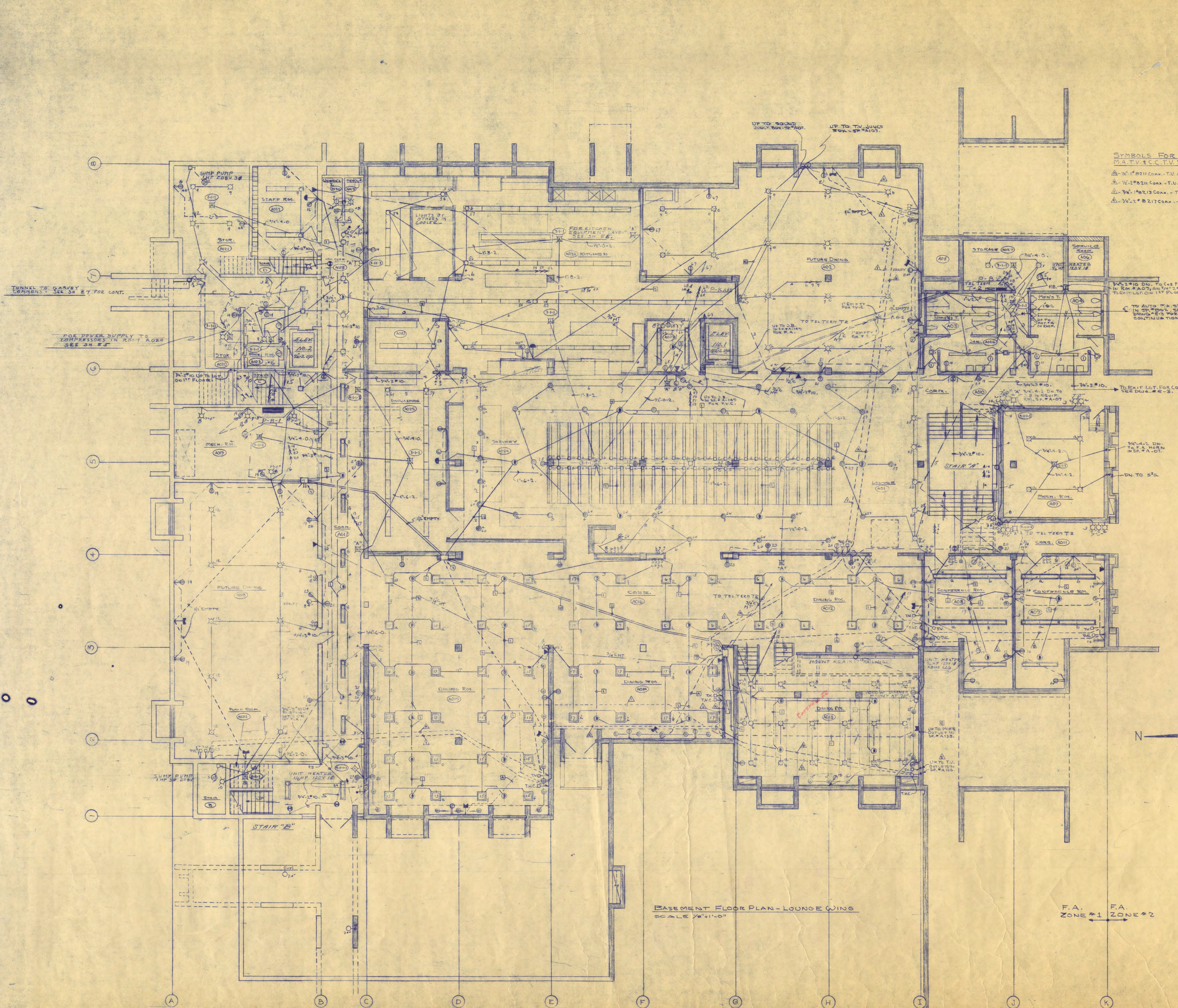
**CATCH BASIN MANHOLE**  
1/2"=1'-0"

<b>STUDENT UNION FOR ST. CLOUD STATE COLLEGE</b>		
STATE COLLEGE BOARD STATE OF MINNESOTA ST. PAUL MINNESOTA		
TRAYNOR AND HERMANSON ARCHITECTS STRUCTURAL ENGINEERS - JOHNSTON & SAHLMAN MINNEAPOLIS CONSULTING ENGINEERS - ORR, SHELLEN, MAYERSON ASSOCIATED INC. MINNEAPOLIS		SHEET NO. <b>EM-1</b>
APPROVED BY _____	DATE Oct. 13, 1944	OF _____
APPROVED BY _____	DRAWN BY D.F.M.'S.K.M.	PROJECT NO.
APPROVED BY _____	CHECKED BY D.F.M.'S.K.M.	<b>E-2</b>
<b>PLOT PLAN</b>		

I hereby certify that this plan, specification, or report was prepared by me or under my direct supervision and that I am a duly Registered Professional Engineer under the laws of the State of Minnesota.  
*D.S. McShannick*  
Date Oct 12 1944 Reg. No. 5593

I hereby certify that this plan, specification, or report was prepared by me or under my direct supervision and that I am a duly Registered Professional Engineer under the laws of the State of Minnesota.  
*John A. Sahlman*  
Date Oct 12 1944 Reg. No. 3724





**BLOCK SCHEMATIC DRAWING FOR M.A.T.V. & C.C.T.V. SYSTEMS**  
NO SCALE

- SYMBOLS FOR SOUND SYSTEM**
- Ⓜ - INDICATE NUMBER OF 8761 SPEAKER CABLES IN CONDUIT. SIZE AS INDICATED BELOW.
  - Ⓜ-1 - UP TO 5 \* 8761 CABLES.
  - Ⓜ-2 - UP TO 2 \* 8761 CABLES.
  - Ⓜ-3 - UP TO 18 \* 8761 CABLES.
  - Ⓜ-4 - UP TO 27 \* 8761 CABLES.
  - Ⓜ-5 - UP TO 37 \* 8761 CABLES.
- NUMBERED NOTES**
- Ground Floor Plan
- Ⓞ - Outlet box with 1-gang blank flush plate for future installation of switch.
  - Ⓞ - To lights on first floor ceiling in light well.
  - Ⓞ - Ground control and amplifier cabinet.
  - Ⓞ - Future sound control and amplifier cabinet.

<b>STUDENT UNION FOR ST. CLOUD STATE COLLEGE</b>		SHEET NO. <b>E-2</b> OF <b>7</b> PROJECT NO.
STATE COLLEGE BOARD STATE OF MINNESOTA ST. PAUL MINNESOTA		
<b>TRAYNOR AND HERMANSON ARCHITECTS</b> ST. CLOUD, MINNESOTA STRUCTURAL ENGINEERS - JOHNSTON & SAHLMAN MINNEAPOLIS CONSULTING ENGINEERS - ORR, SHELEN, MAYERON ASSOCIATED INC. MINNEAPOLIS		<b>E-2</b>
APPROVED BY _____	DATE <b>OCT. 17, 1964</b>	
APPROVED BY _____	DRAWN <b>D. J. MESSERSLAW</b>	
APPROVED BY _____	CHECKED <b>D. E. O'S.</b>	
<b>ELECTRICAL</b> GROUND FLOOR PLAN - LOUNGE WING COMM. NO. 1243-2		<b>E-2</b>

**BASEMENT FLOOR PLAN - LOUNGE WING**  
SCALE 1/8" = 1'-0"

F.A. ZONE #1      F.A. ZONE #2