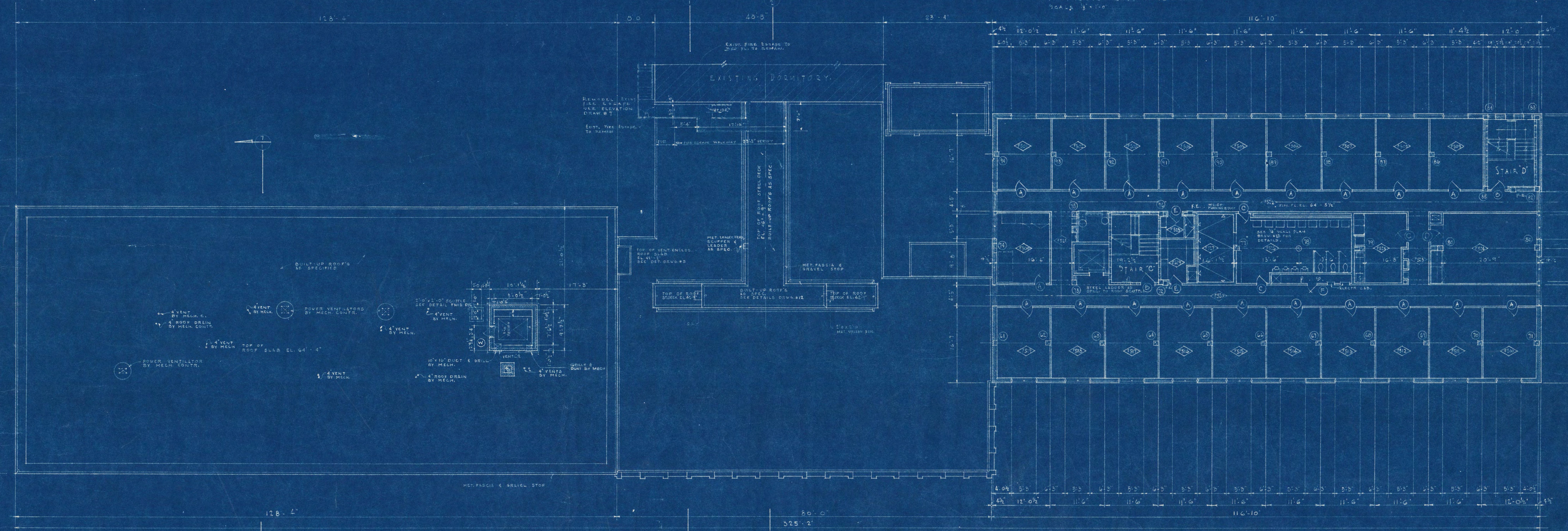
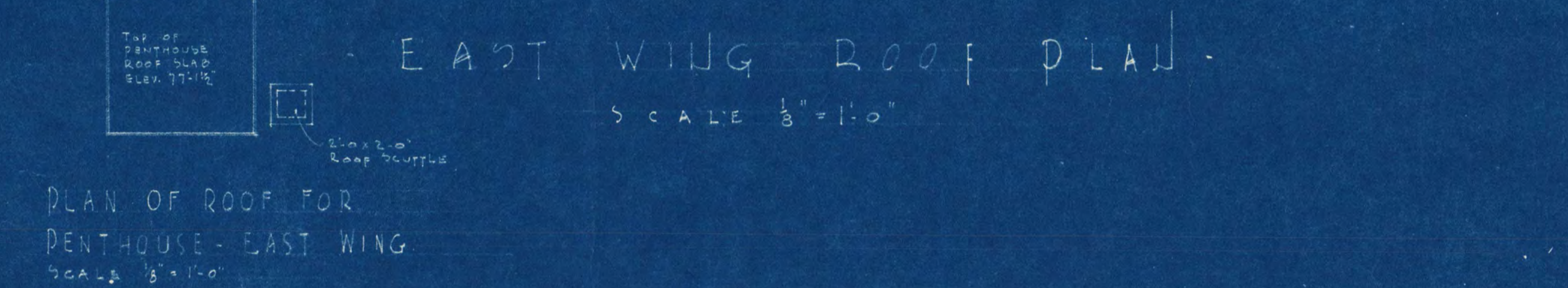
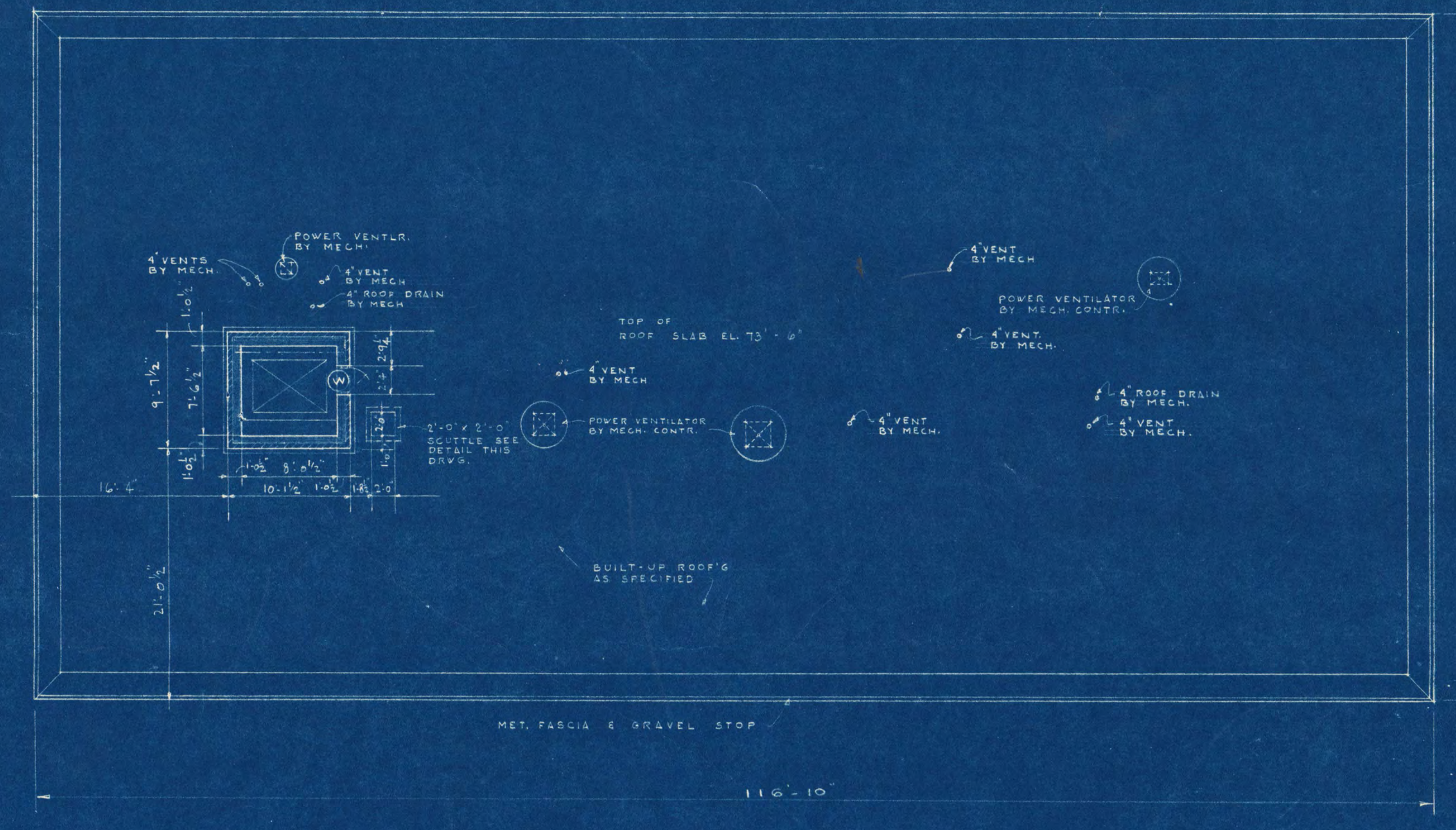
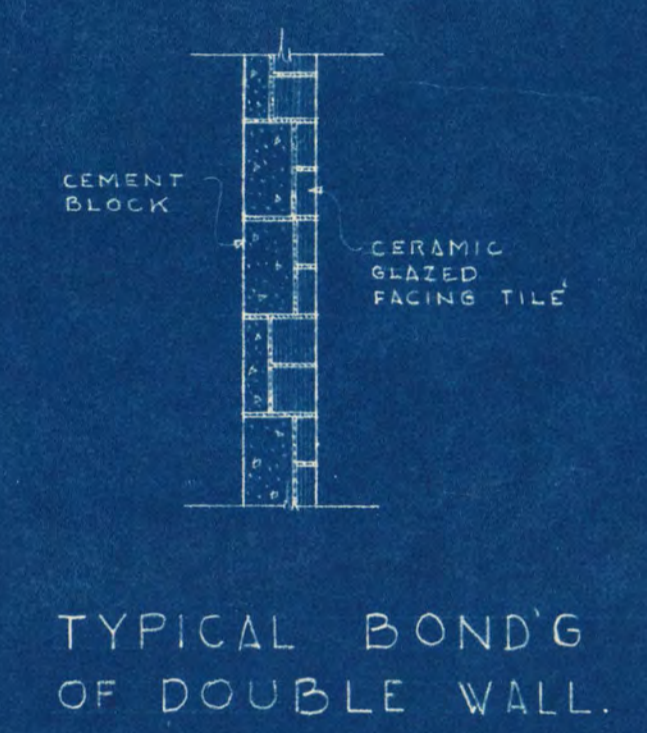
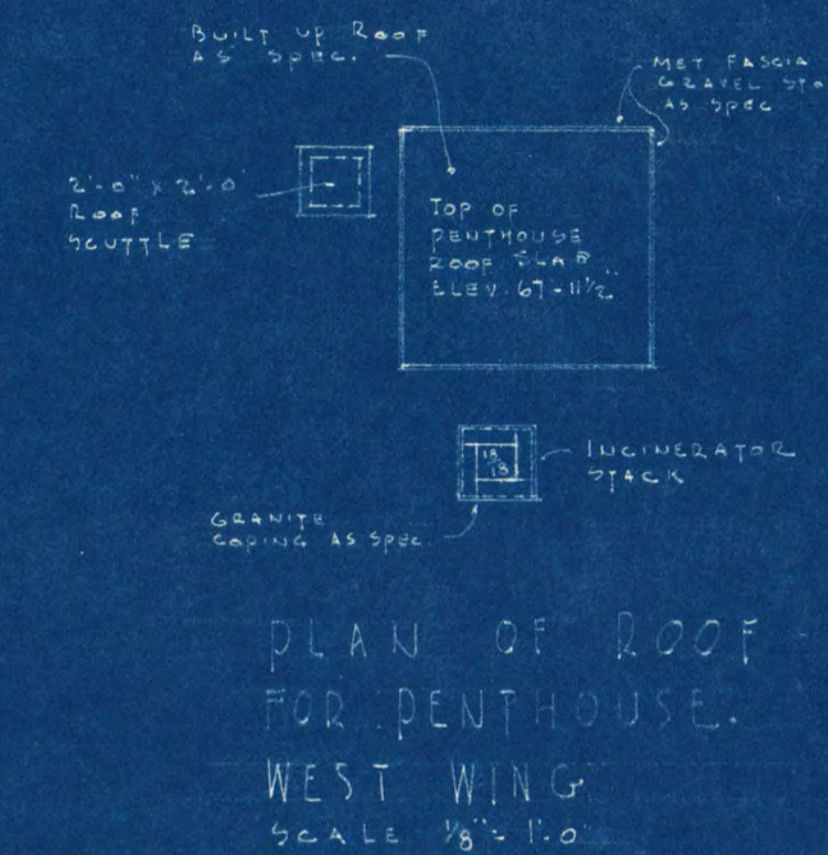
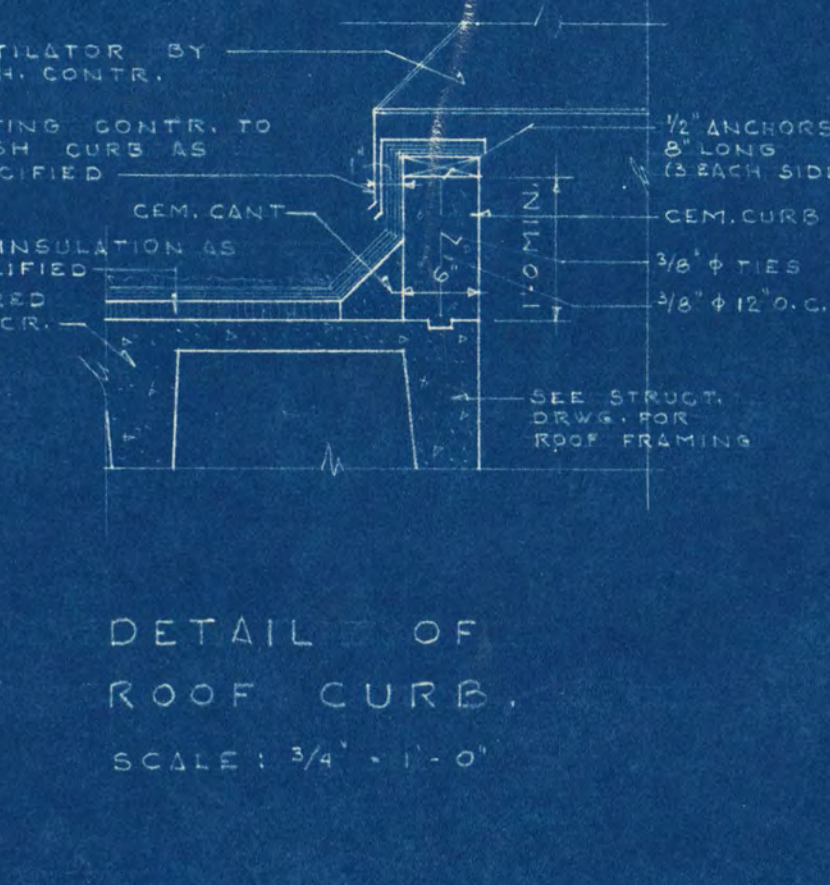
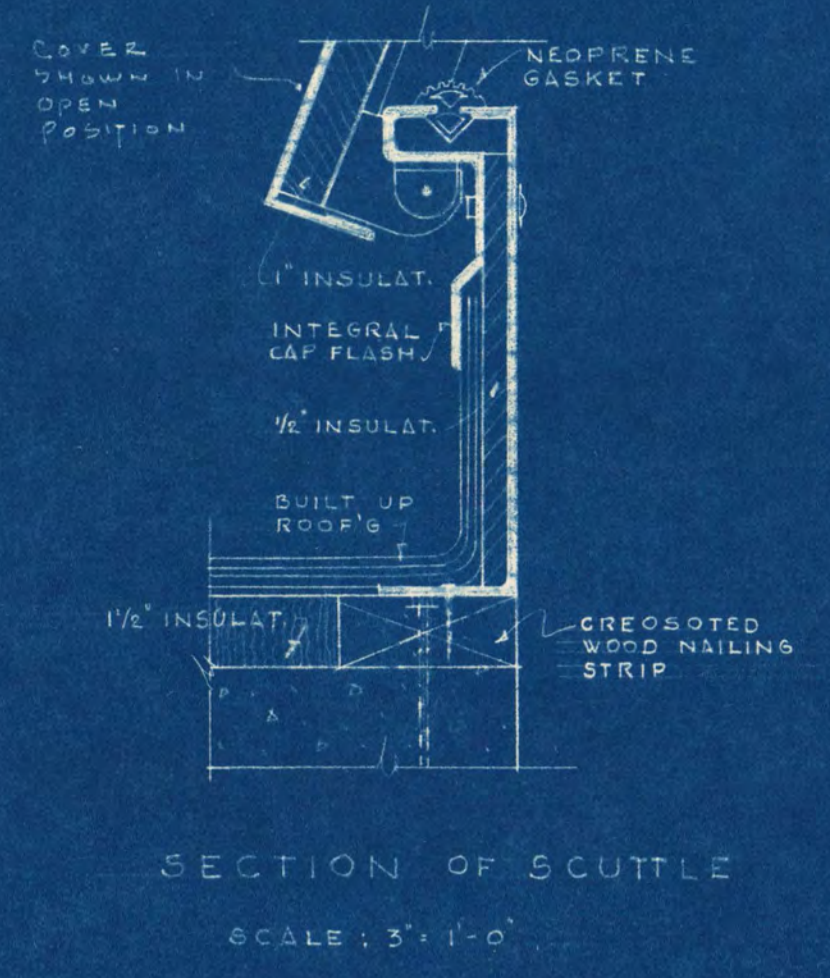


ROOM & SPACE FINISH SCHEDULE		DOOR SCHEDULE	
FLOORING	BASE	WALLS	CEILING
WOOD	WOOD	WOOD	WOOD
...

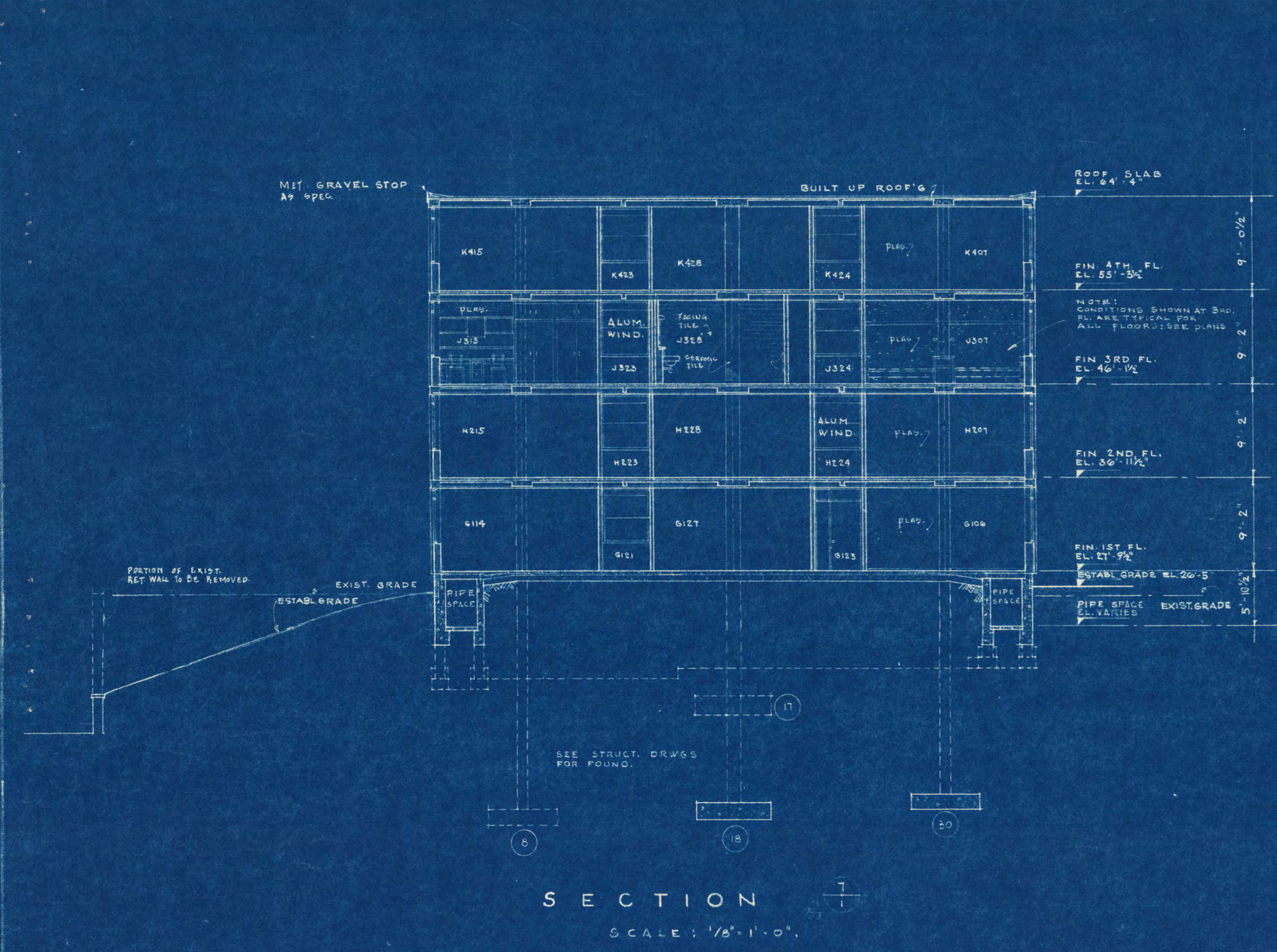
MARK	DOOR SIZE		TYPE	FRAME	GLASS	TRANSOM	REMARKS
	WIDTH	HEIGHT					
A	3'-0"	7'-0"	...	H. M.	UNDERWRITERS' TO LBS.
B	3'-0"	6'-8"	...	H. M.

NOTE: PROVIDE ANGEL LINTELS OVER ALL DOWN OVERS IN ROOF AND OTHER OPENINGS AS FOLLOWS:
 4" WALLS 1 - 4" X 2 1/2" X 1/4" S
 8" WALLS 2 - 4" X 2 1/2" X 1/4" S
 12" WALLS 3 - 4" X 2 1/2" X 1/4" S
 16" WALLS 4 - 4" X 2 1/2" X 1/4" S

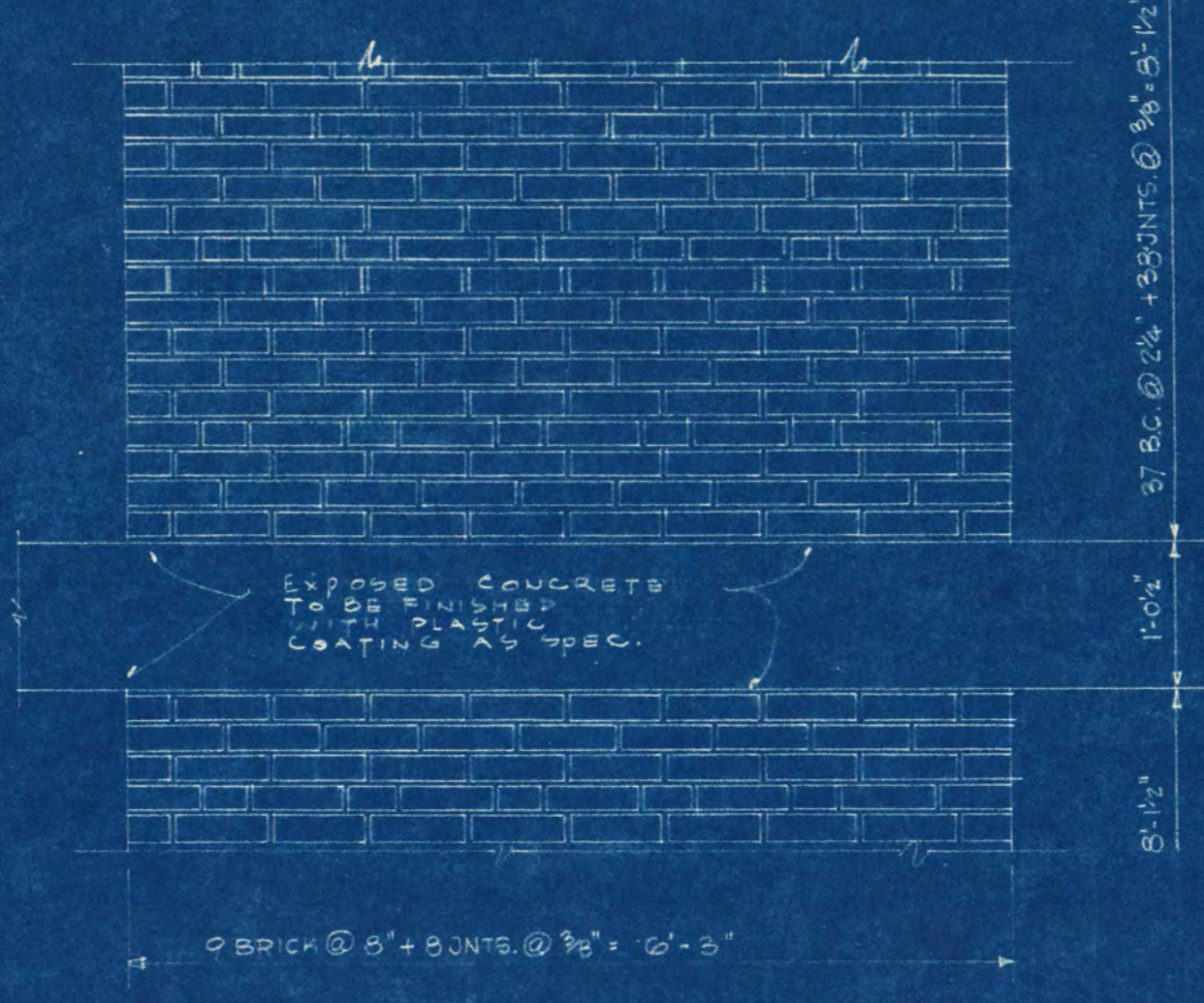
EXCEPT OTHERWISE NOTED, QUOTE DOOR & WINDOW UNITS TO BE RE-ORDERED THROUGH THE UNITS.



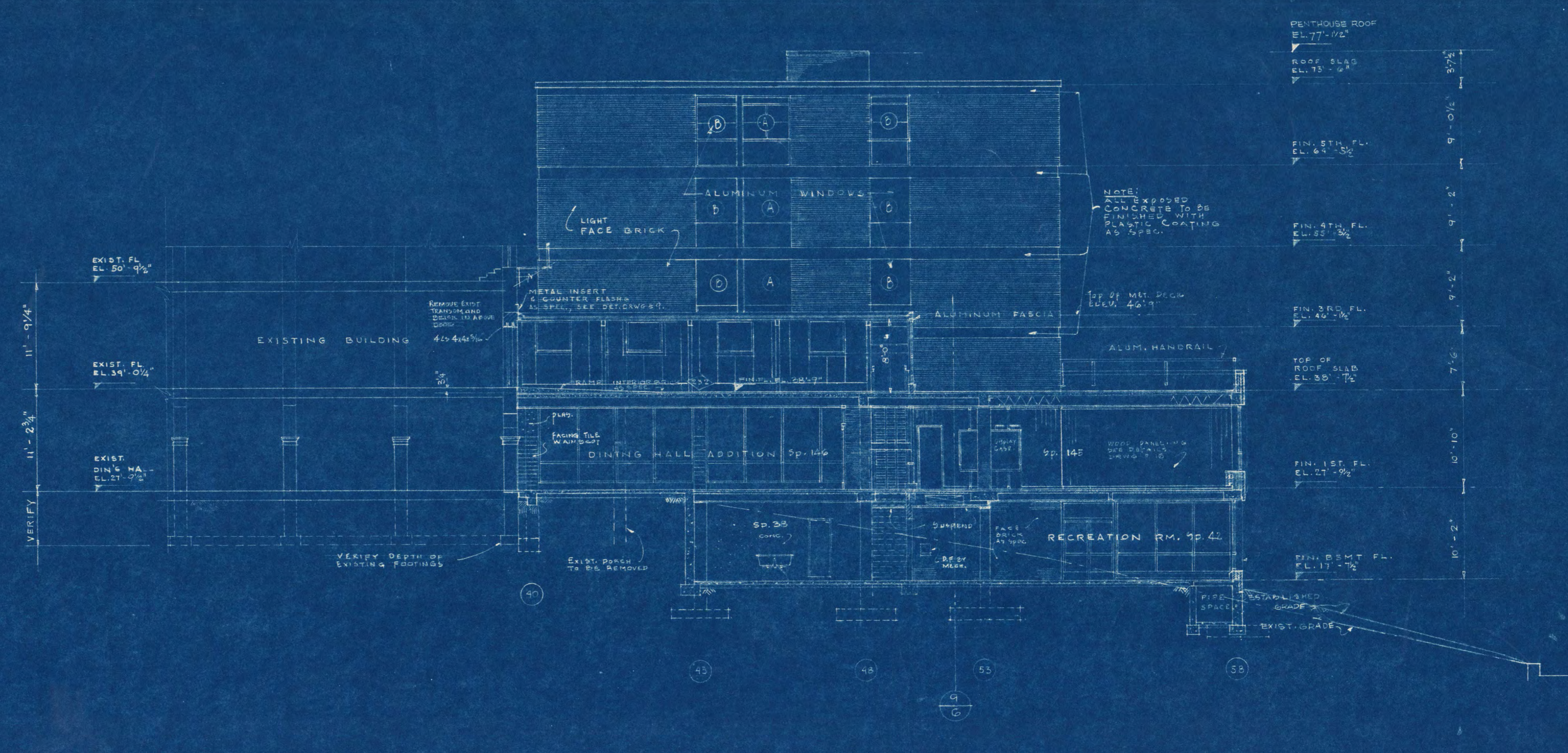
ADDITION TO SHOEMAKER HALL ST. CLOUD STATE COLLEGE ST. CLOUD, MINN. 56101	
CONTR. NO.	FRANK W. JACKSON & ASSOCIATES, INC.
OWNER	ST. CLOUD STATE COLLEGE
DATE	...
DESIGNED BY	...
APPROVED BY	...
PROJECT NO.	...



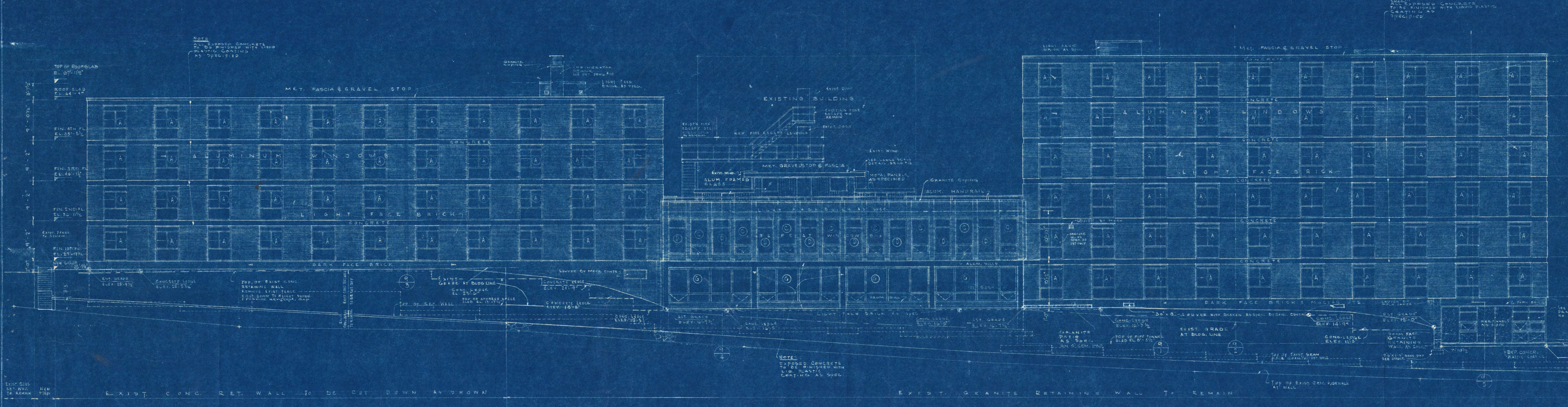
SECTION 1
SCALE: 1/8" = 1'-0"



TYPICAL WALL PANEL
SCALE: 3/4" = 1'-0"

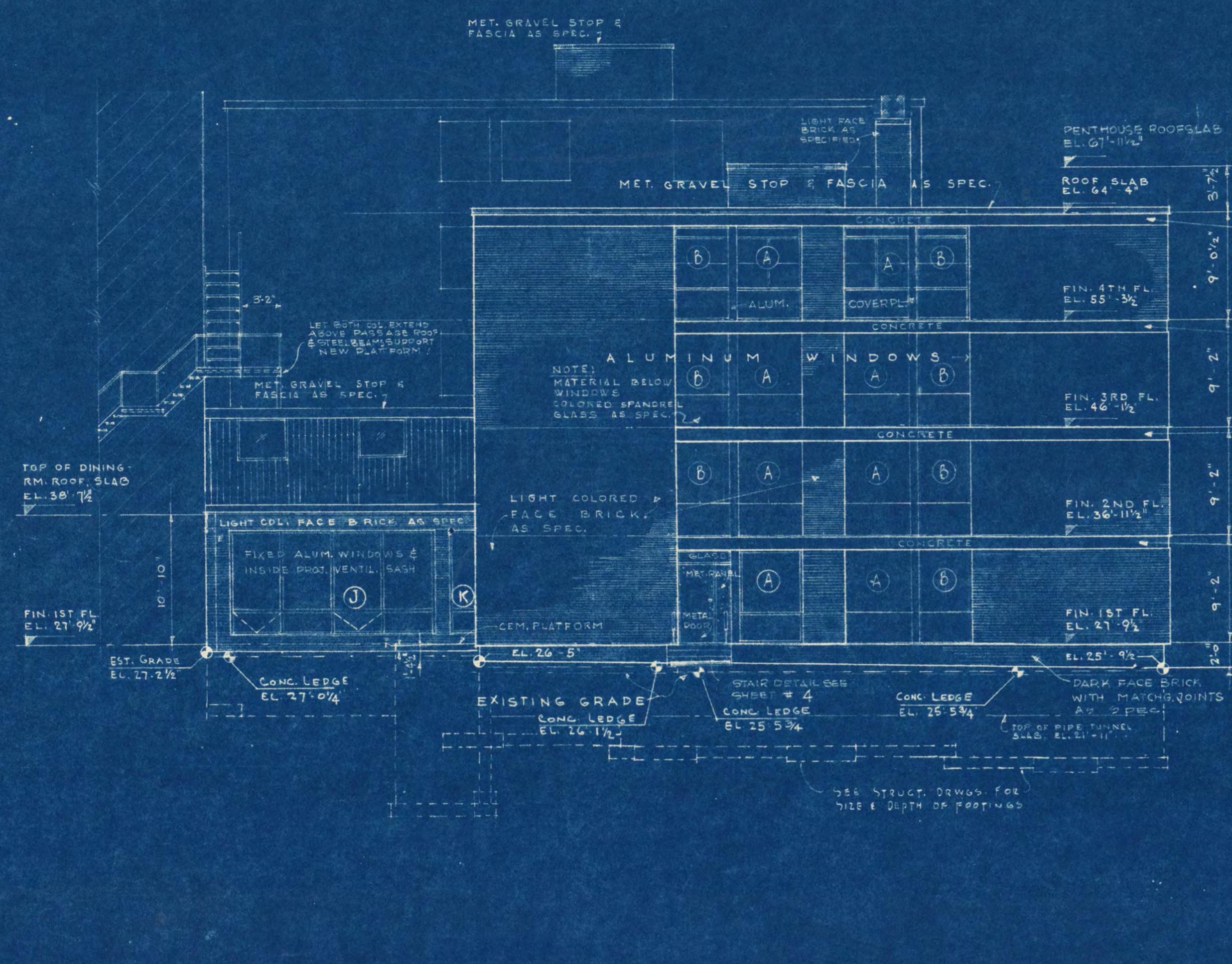


WEST ELEVATION OF EAST WING & SECTION 2
SCALE: 1/8" = 1'-0"

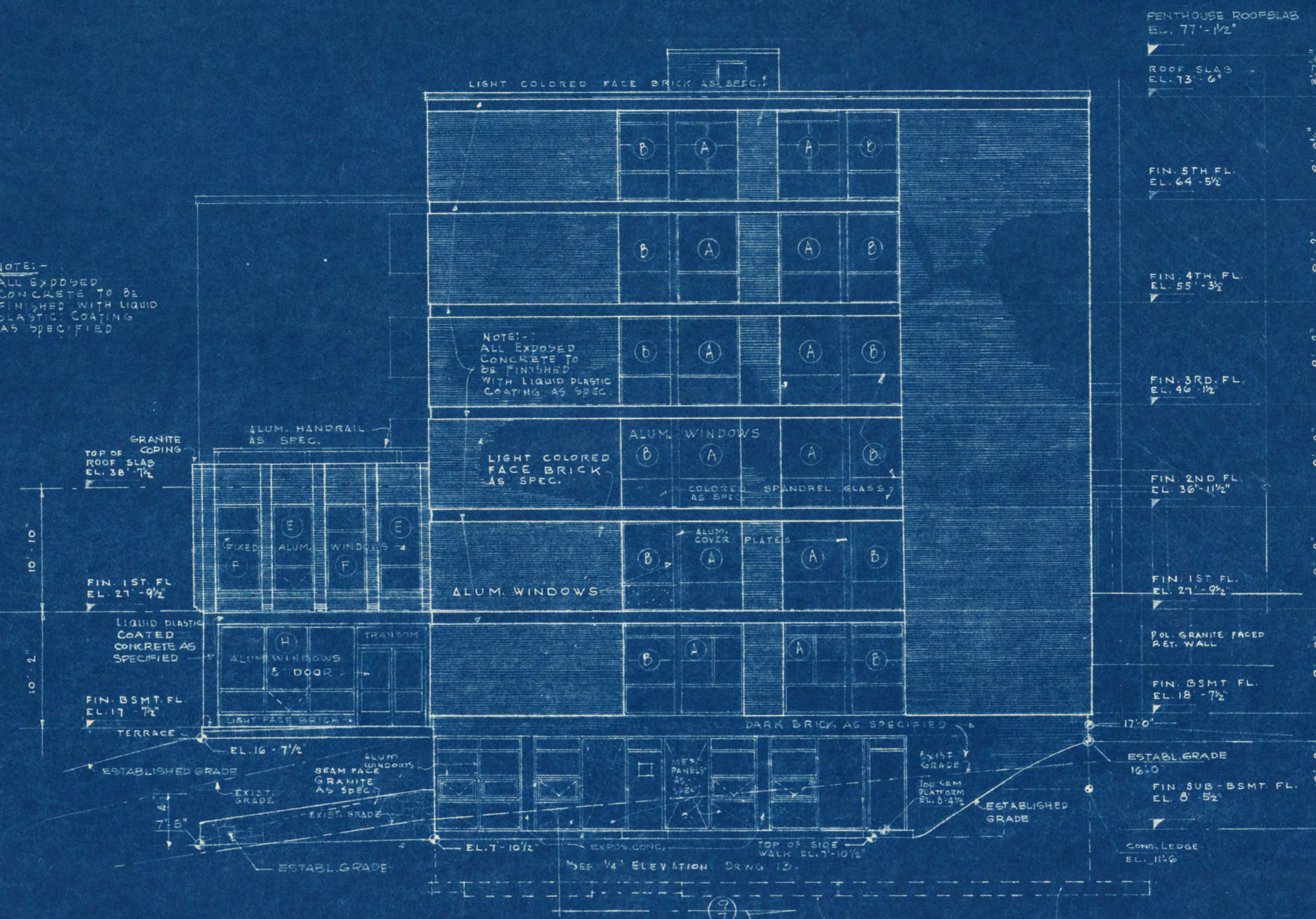


SOUTH ELEVATION.
SCALE: 1/8" = 1'-0"

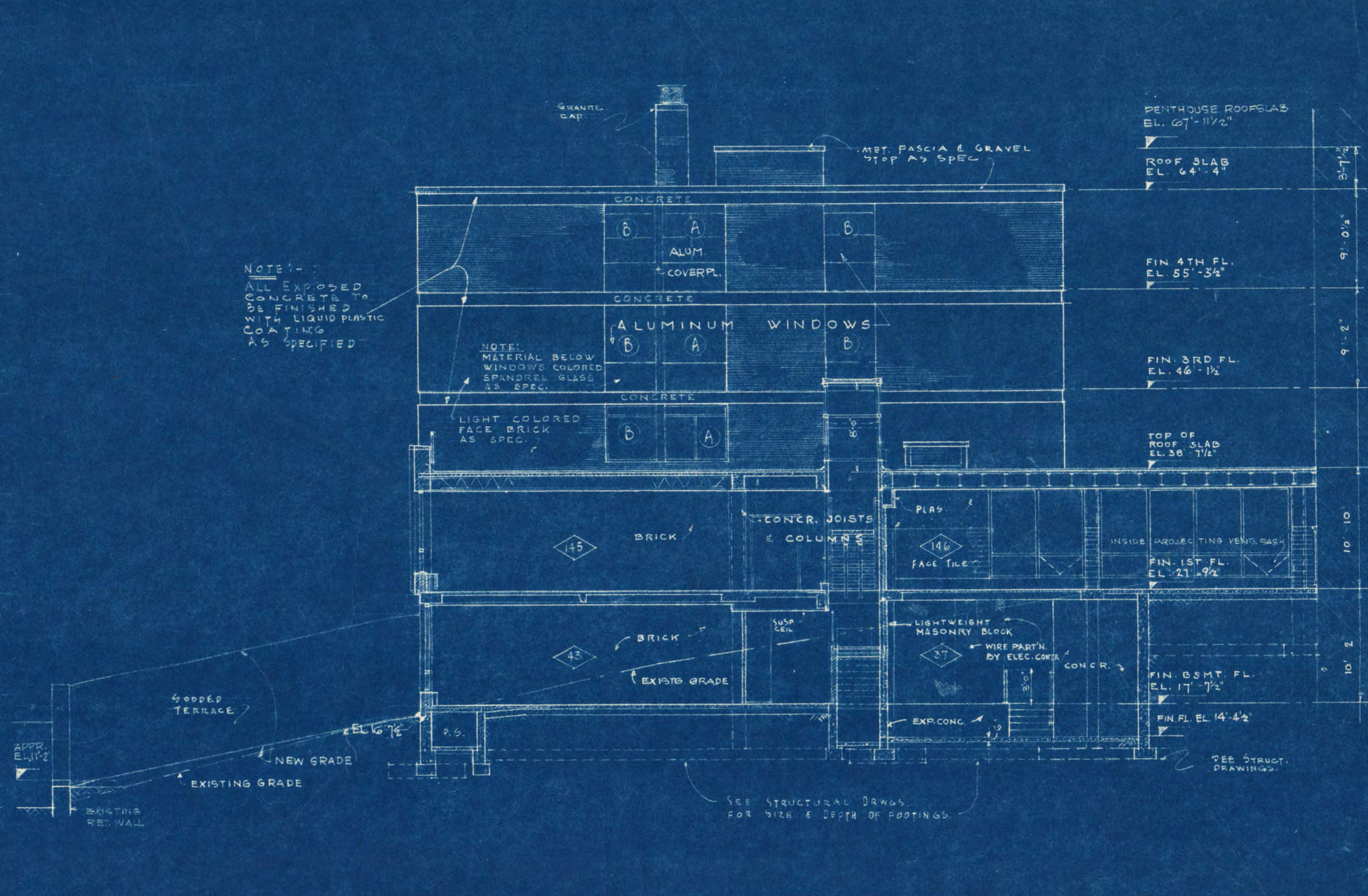
ADDITION TO SHOEMAKER HALL ST. CLOUD STATE COLLEGE, ST. CLOUD, MINNESOTA.	
DESIGNED BY FRANK W. JACKSON & ASSOCIATES, INC. ST. CLOUD, MINNESOTA	SHOWN BY 7
DRAWN BY G. W. M. C.	2
CHECKED BY S. J. S.	APPROVED BY <i>Sergio J. S.</i>
DATE 5-2-54	ST. CLOUD 8-10



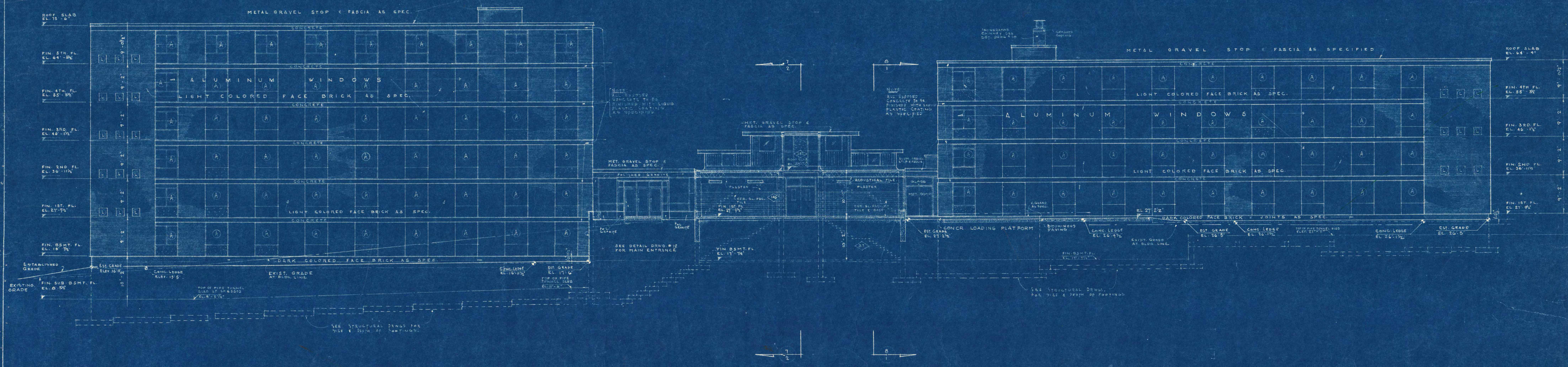
WEST ELEVATION
SCALE: 1/8" = 1'-0"



EAST ELEVATION
SCALE: 1/8" = 1'-0"

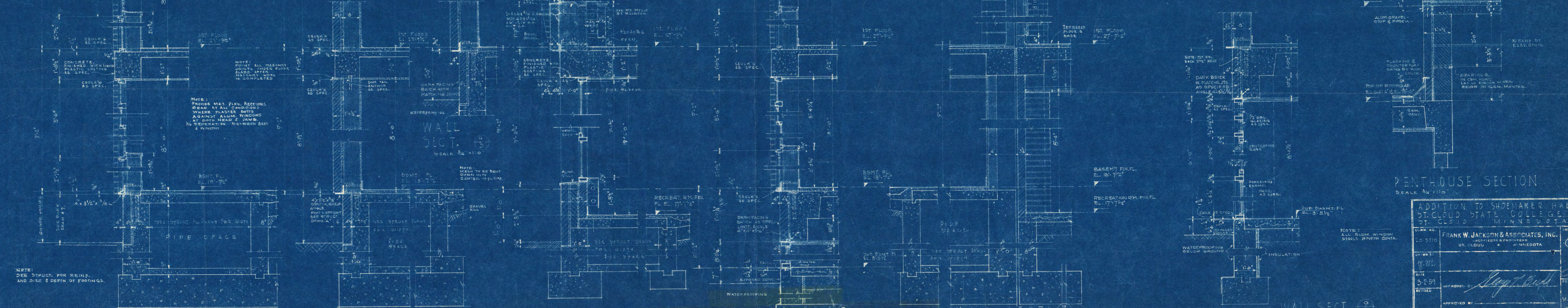
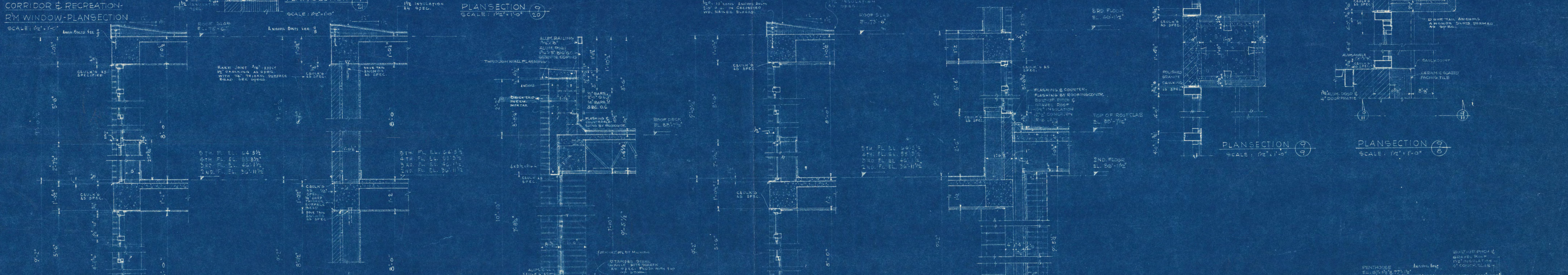
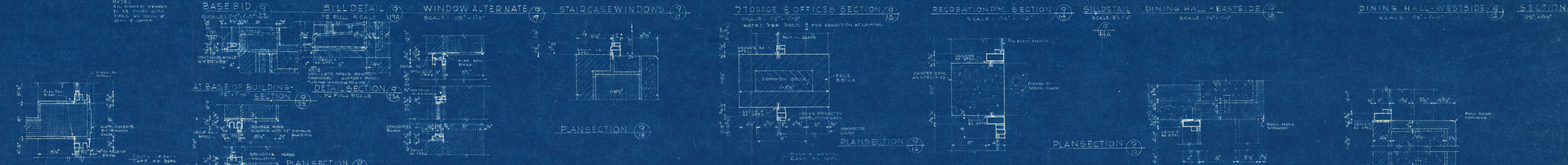
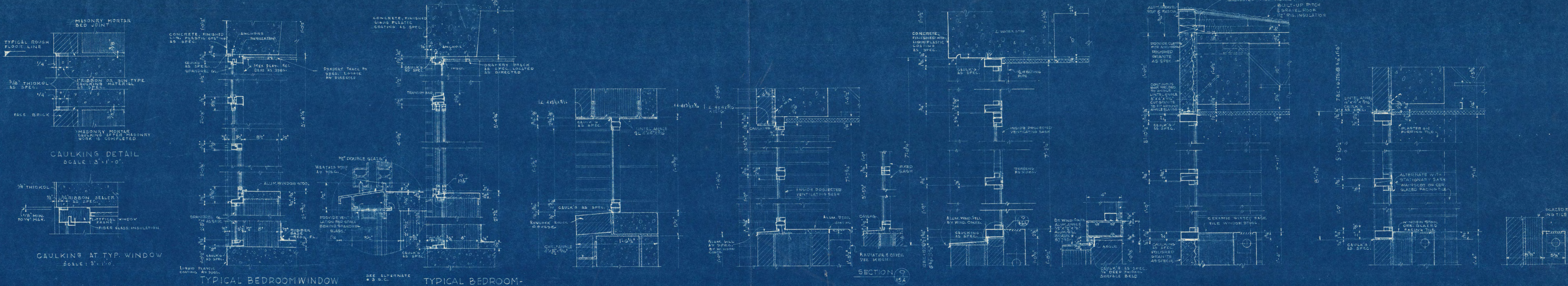


EAST ELEVATION OF WEST WING & SECTION
SCALE: 1/8" = 1'-0"



NORTH ELEVATION
SCALE: 1/8" = 1'-0"

ADDITION TO SHOEMAKER HALL ST. CLOUD STATE COLLEGE ST. CLOUD, MINNESOTA	
FORM NO. 20-8710	FRANK W. JACKSON & ASSOCIATES, INC. ARCHITECTS & ENGINEERS ST. CLOUD, MINNESOTA
DATE 3-2-59	APPROVED BY <i>[Signature]</i>
REVISED	PROJECT NO. ST. CLOUD 13-15



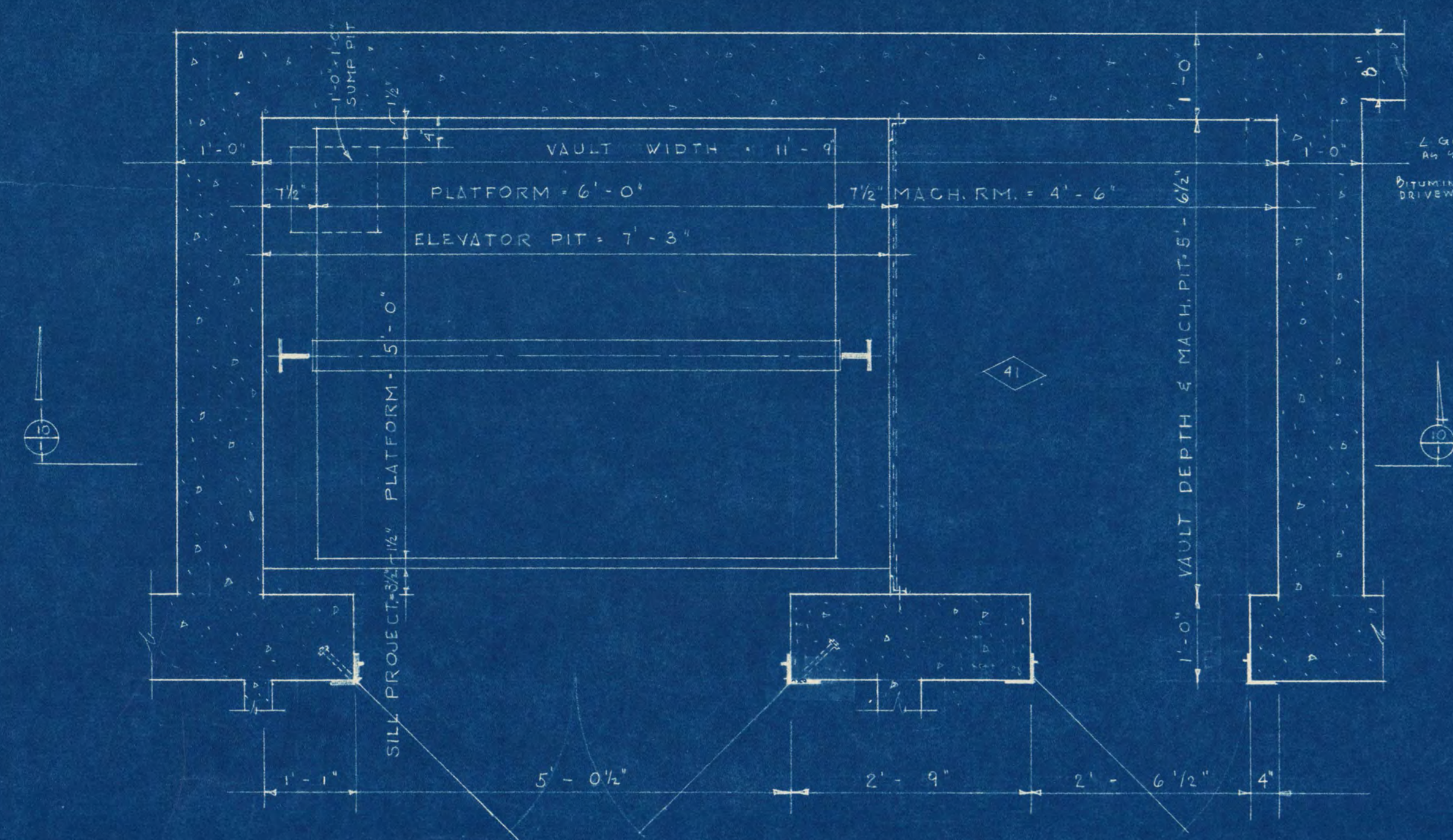
ADDITION TO SHOEMAKER HALL
ST. CLOUD STATE COLLEGE
ST. CLOUD, MINNESOTA

FRANK W. JACKSON & ASSOCIATES, INC.
ARCHITECTS & ENGINEERS
ST. CLOUD, MINNESOTA

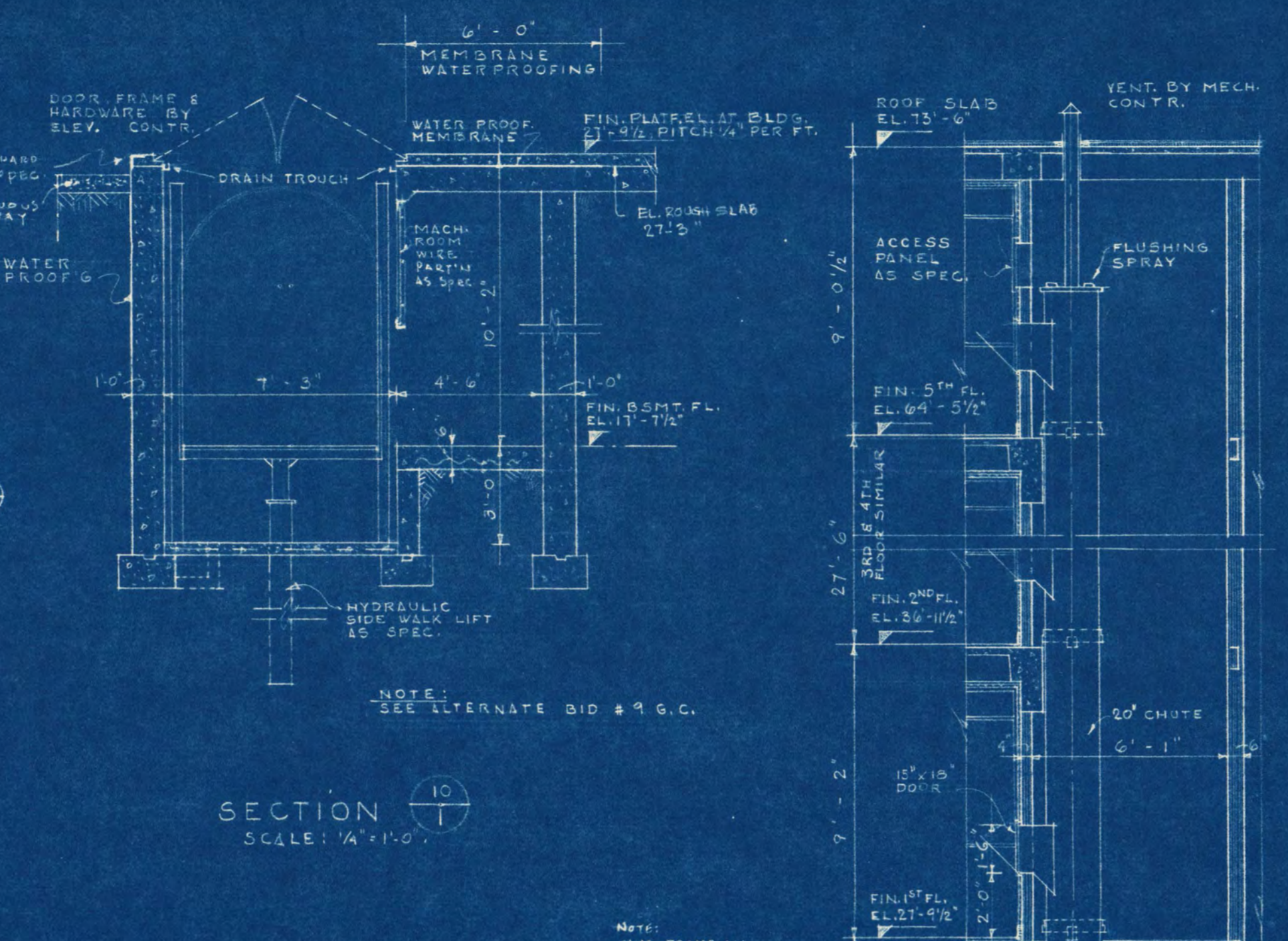
DATE: 5-29-31
DESIGNED BY: [Signature]
APPROVED BY: [Signature]
APPROVED BY: [Signature]

NOTE: ALL TYP. WINDOW STOODS WINDOW COMTS.

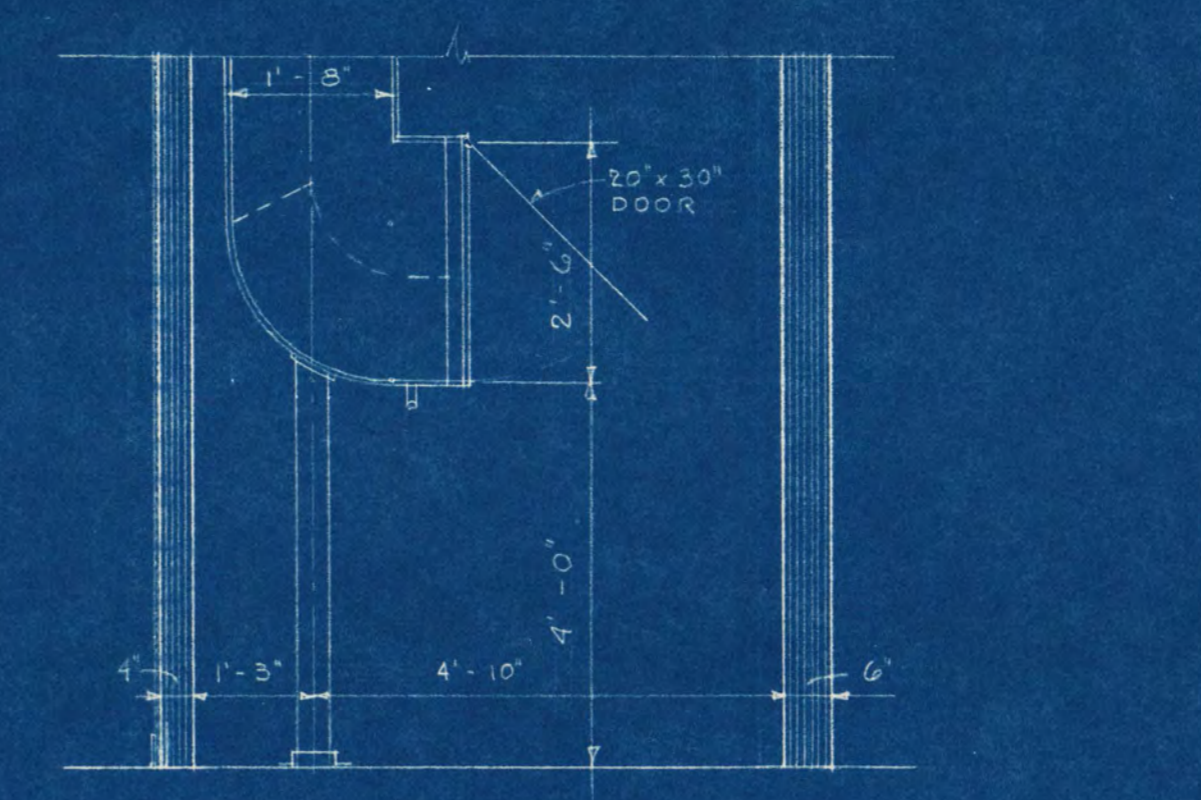
ST. CLOUD
B-10



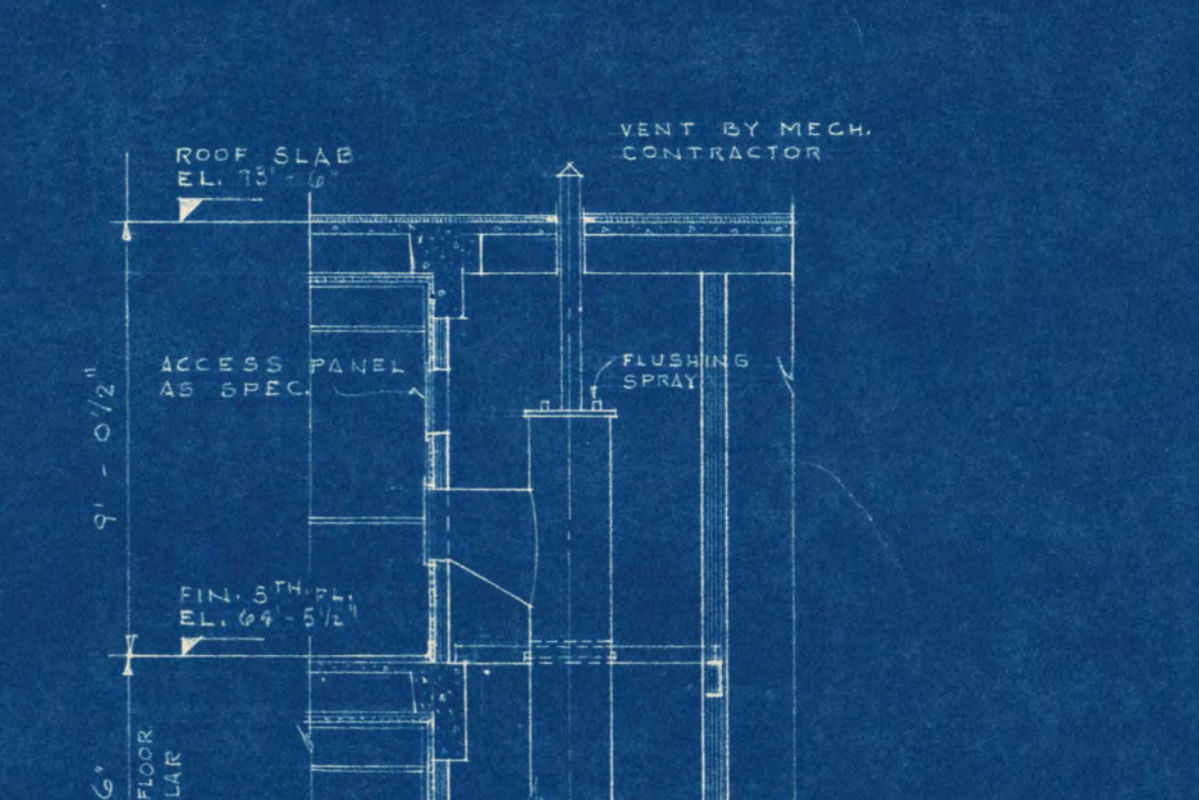
SIDEWALK ELEVATOR PLAN (WEST WING)
SCALE: 3/4" = 1'-0"



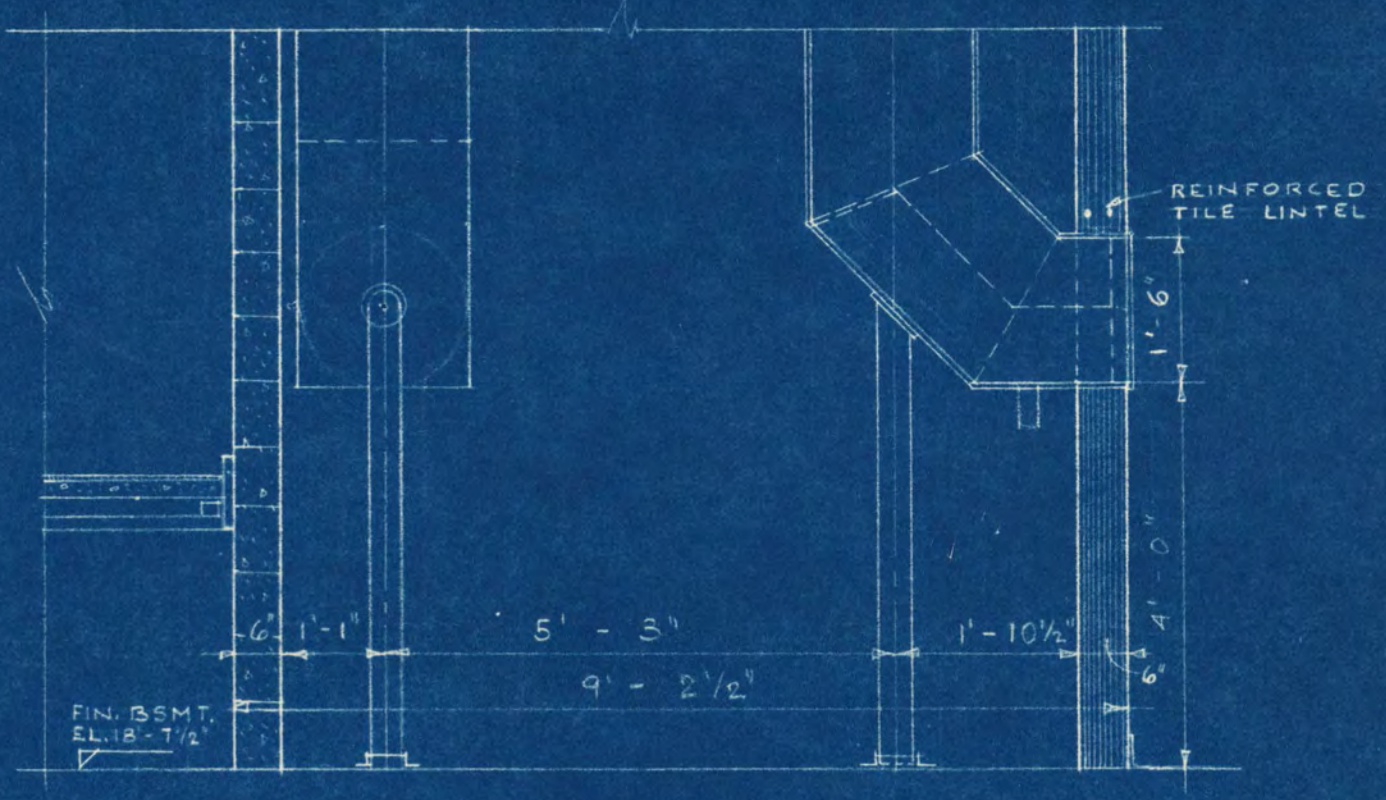
SECTION 10
SCALE: 1/4" = 1'-0"



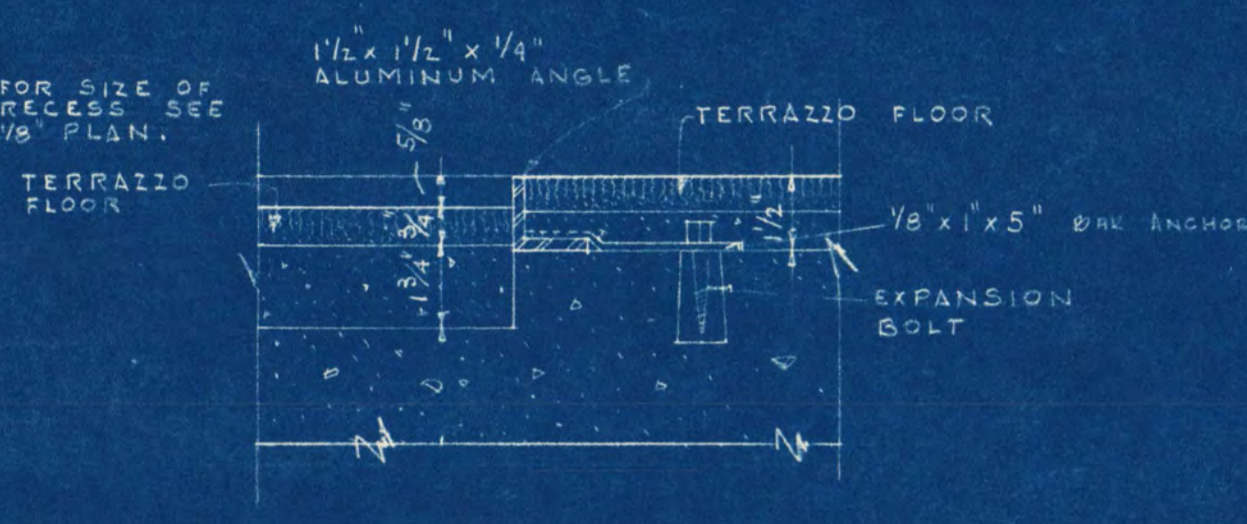
SECTION 10
SCALE: 1/4" = 1'-0"



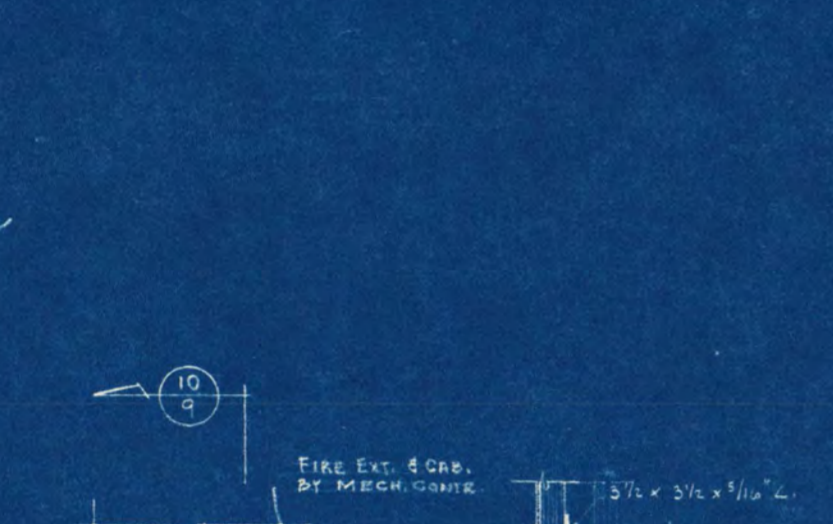
SECTION 10
SCALE: 1/4" = 1'-0"



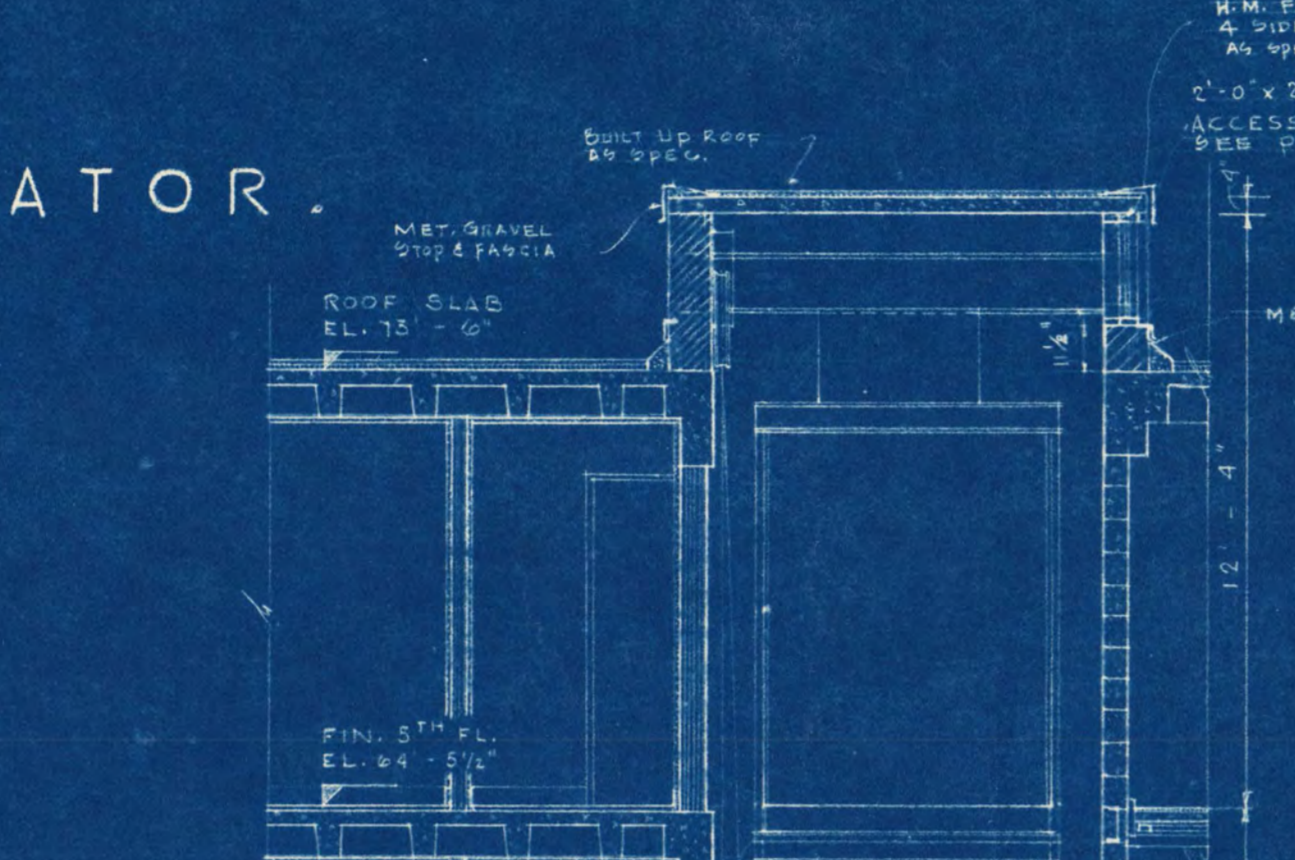
SECTION 10
SCALE: 1/4" = 1'-0"



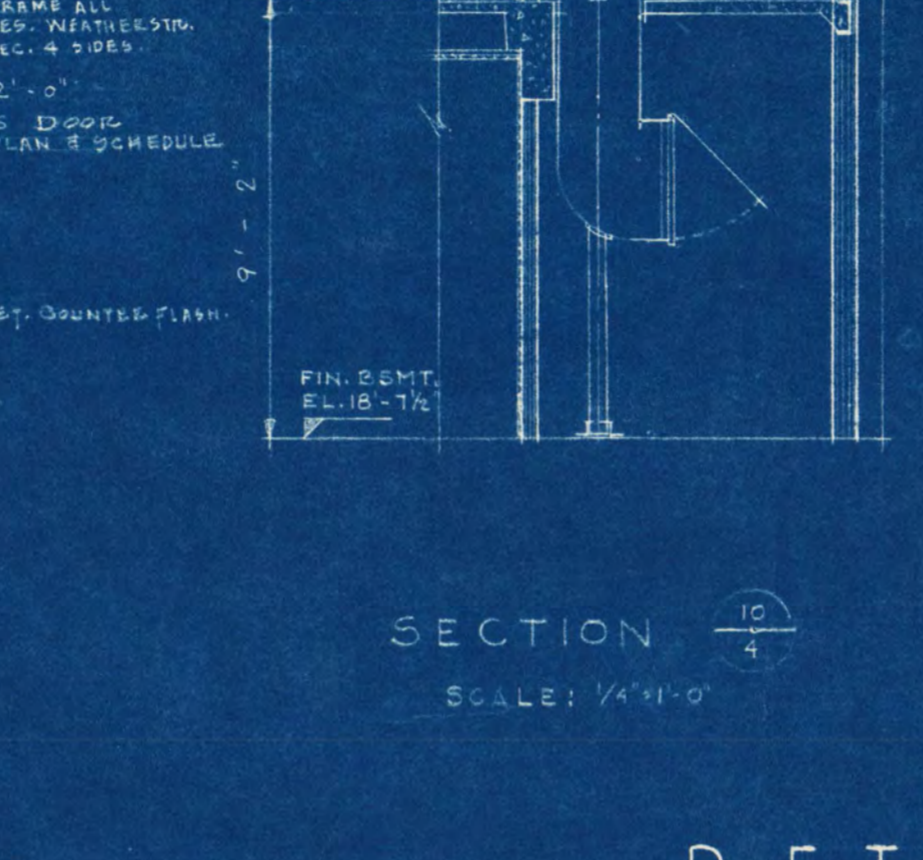
RECESS FLOOR MAT & FRAME DETAIL.
SCALE: 3/4" = 1'-0"



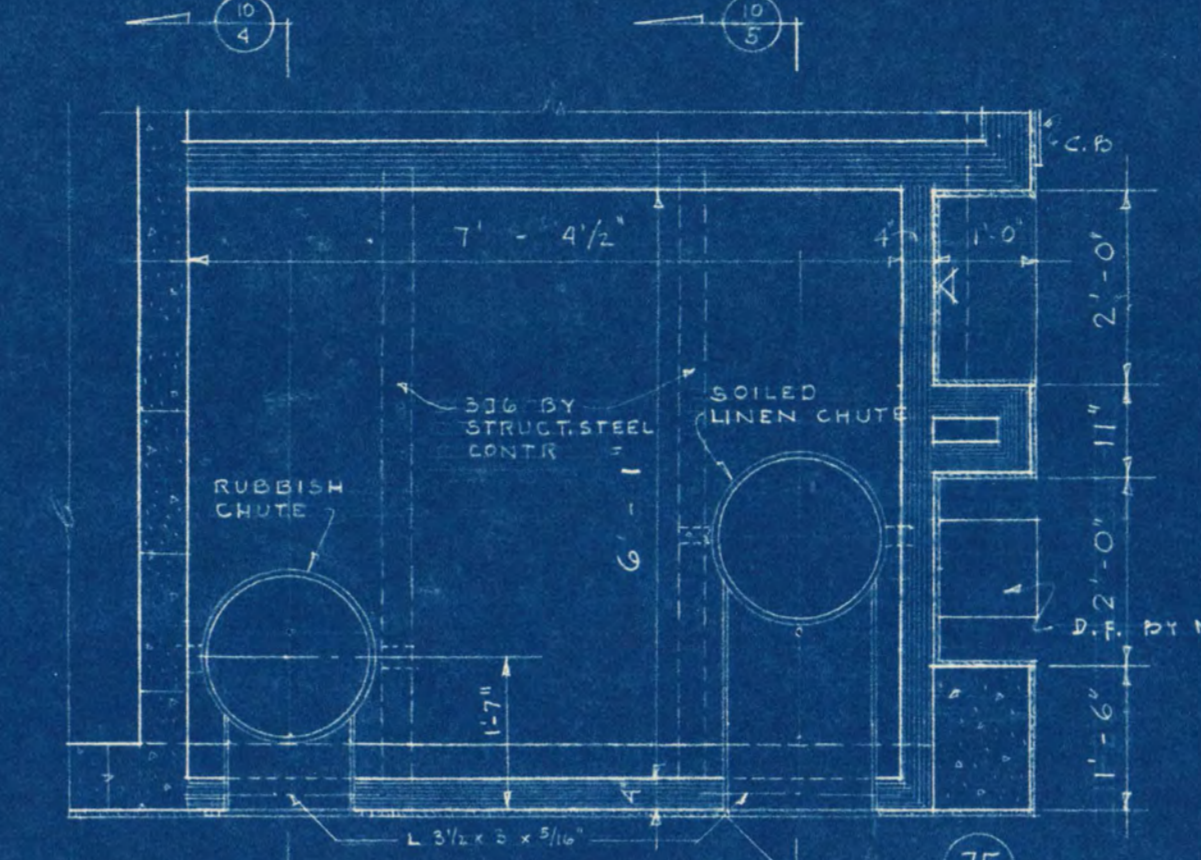
FIRE EXTINGUISHER DET.
SCALE: 3/8" = 1'-0"



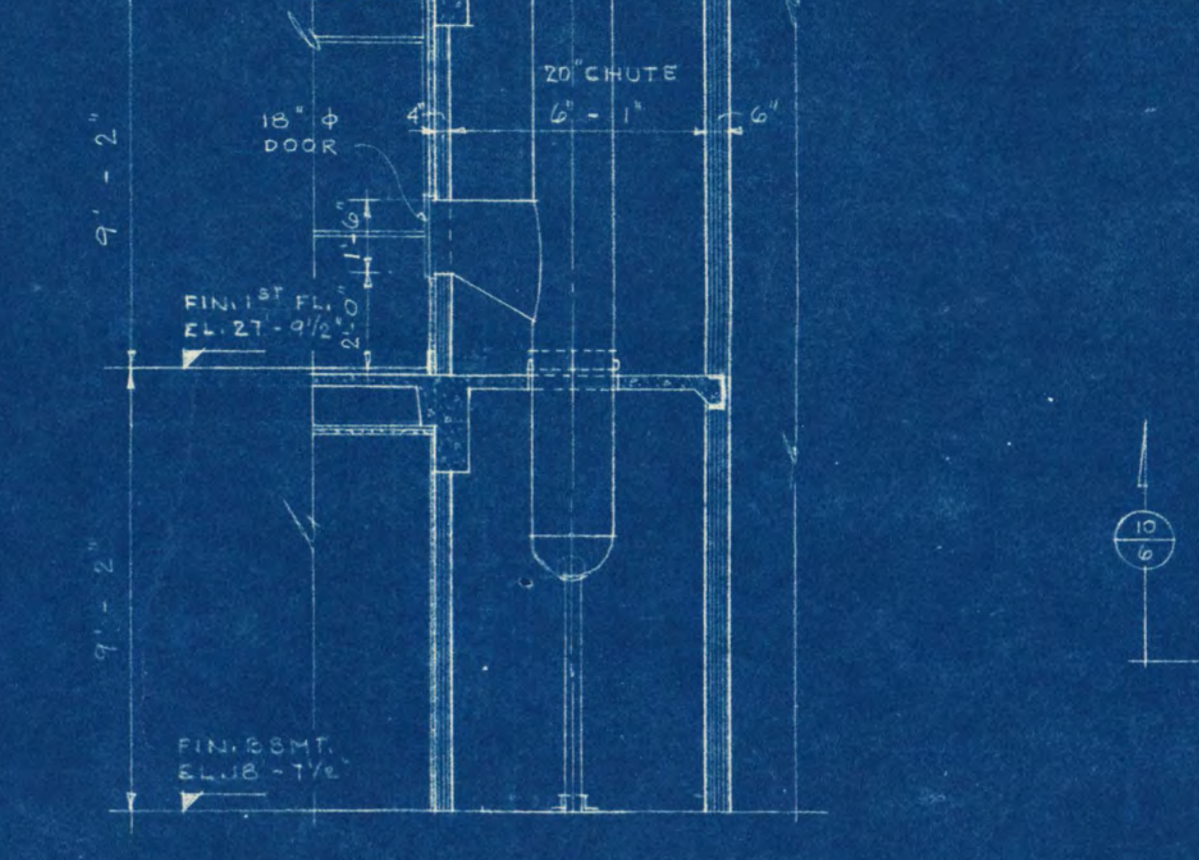
ELEVATION SECTION 10



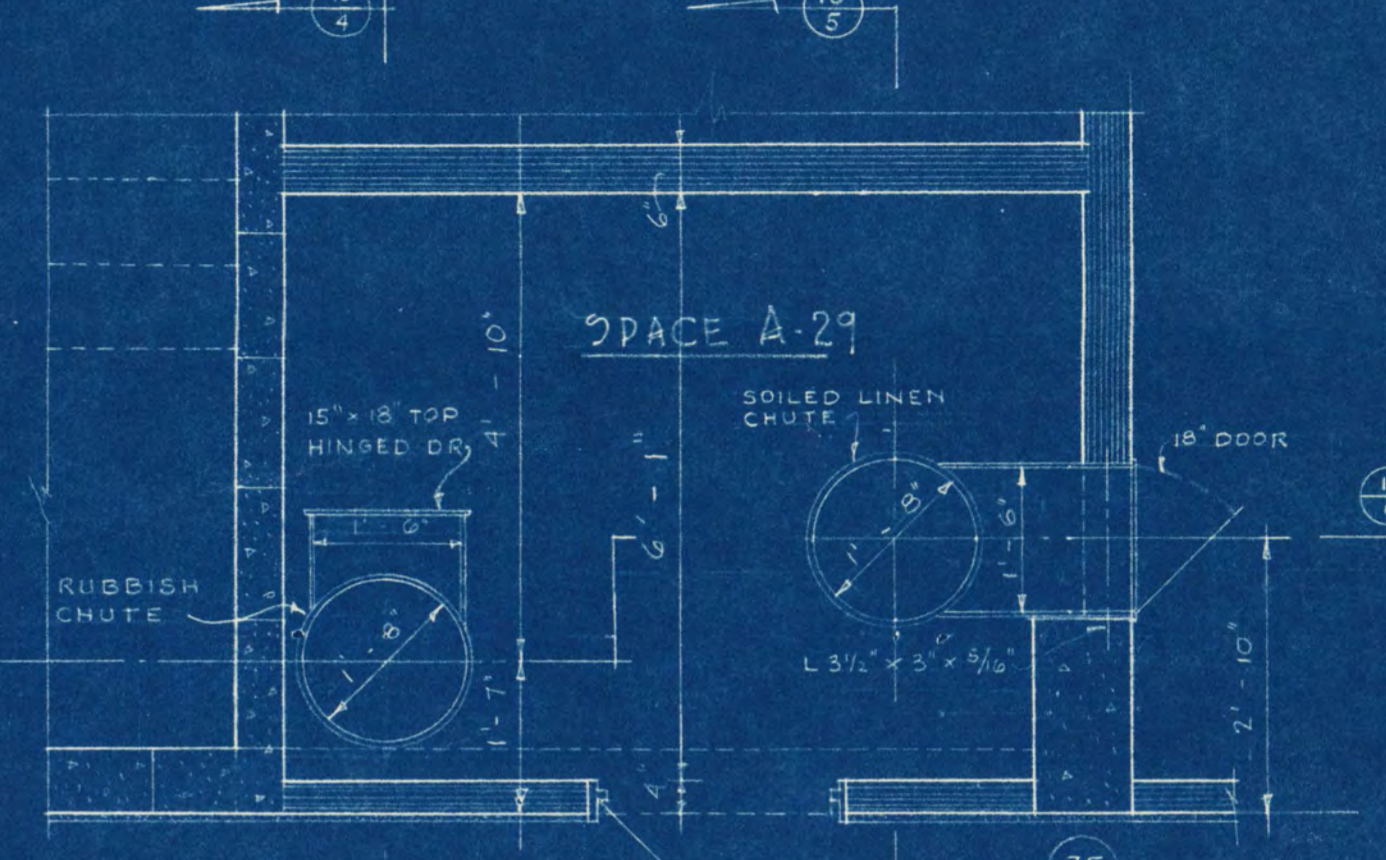
SECTION 10
SCALE: 1/4" = 1'-0"



2ND FL. RUBBISH & SOILED LINEN CHUTE PLAN FOR EAST WING.
SCALE: 1/2" = 1'-0"

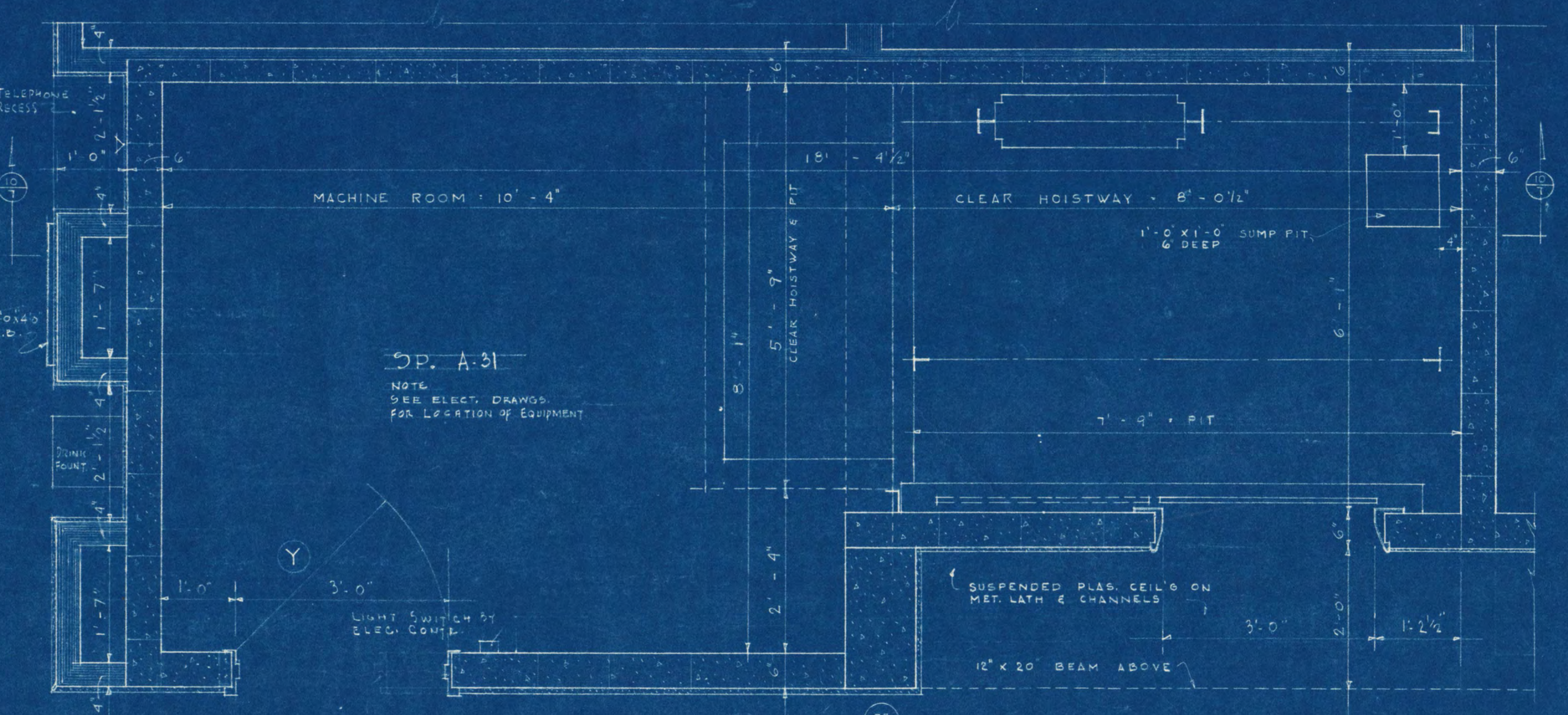


SECTION 10
SCALE: 1/4" = 1'-0"

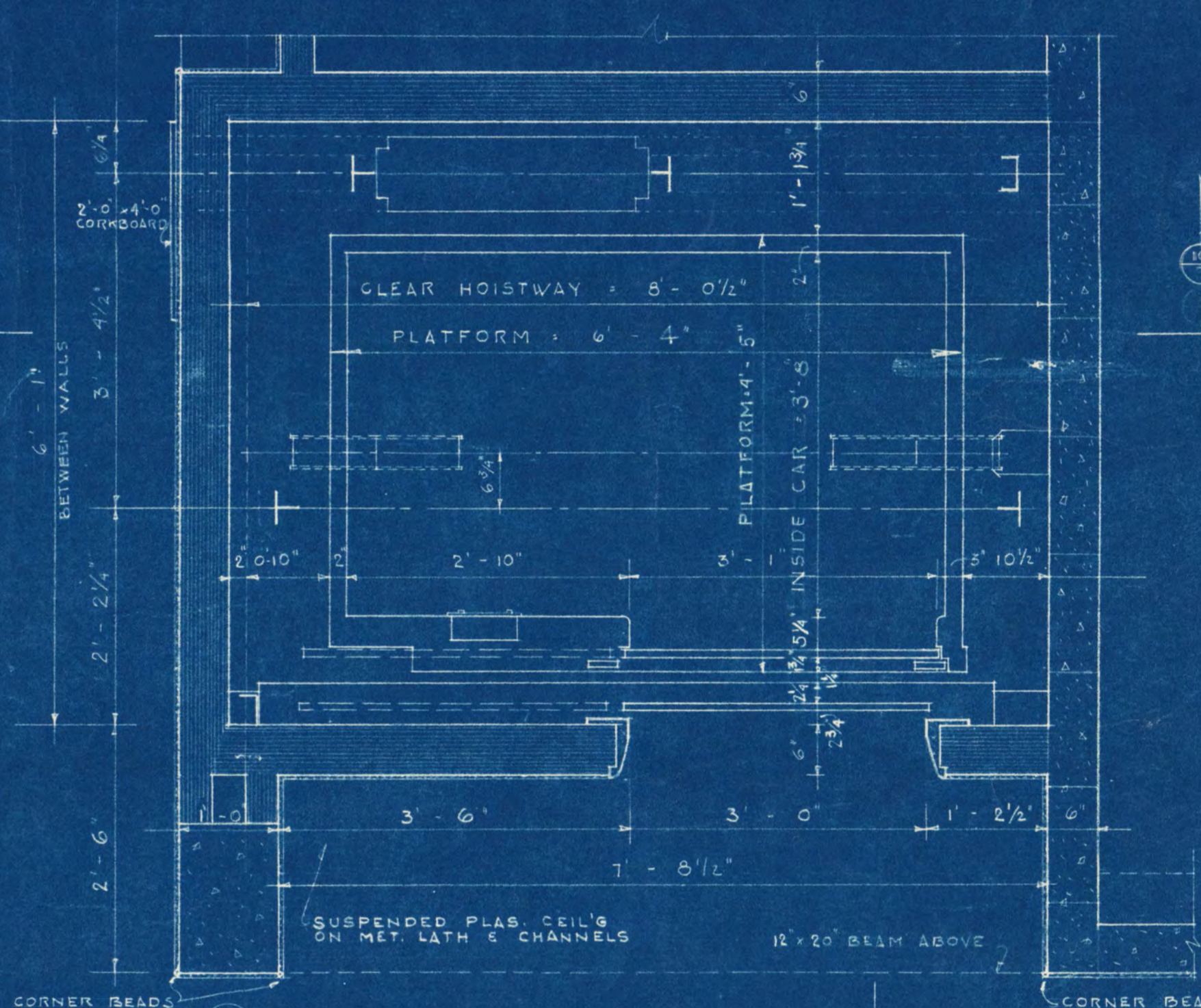


RUBBISH & SOILED LINEN CHUTE BENT PL. - EAST WING.
SCALE: 1/2" = 1'-0"

DETAILS FOR RUBBISH & SOILED LINEN CHUTES.

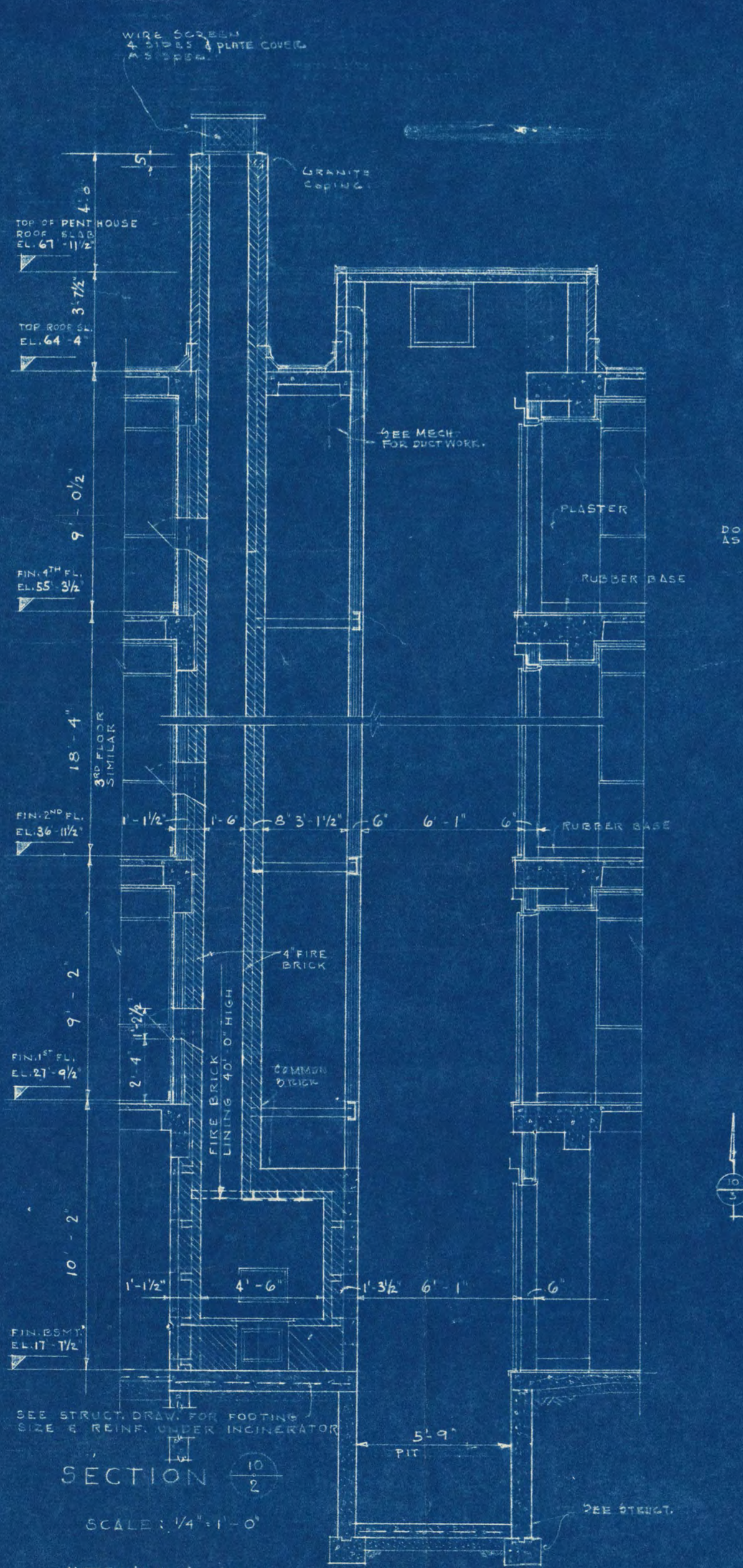


ELEVATOR PIT PLAN & MACHINE RM (EAST WING)
WEST - W. SIMILAR, ONLY REVERSED
SCALE: 3/4" = 1'-0"

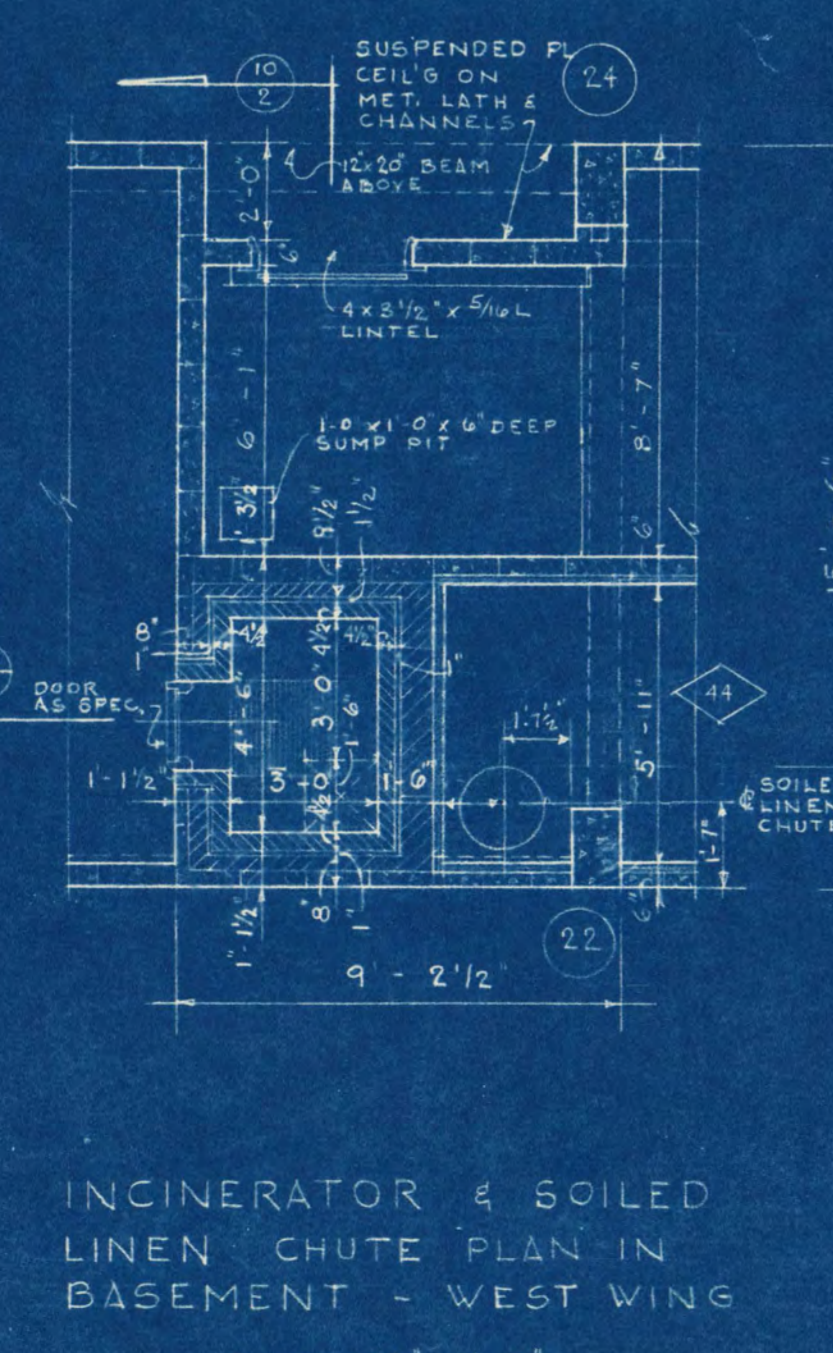


2ND FLOOR ELEVATOR SHAFT PLAN FOR EAST WING, WEST WING REVERSED.
SCALE: 1/4" = 1'-0"

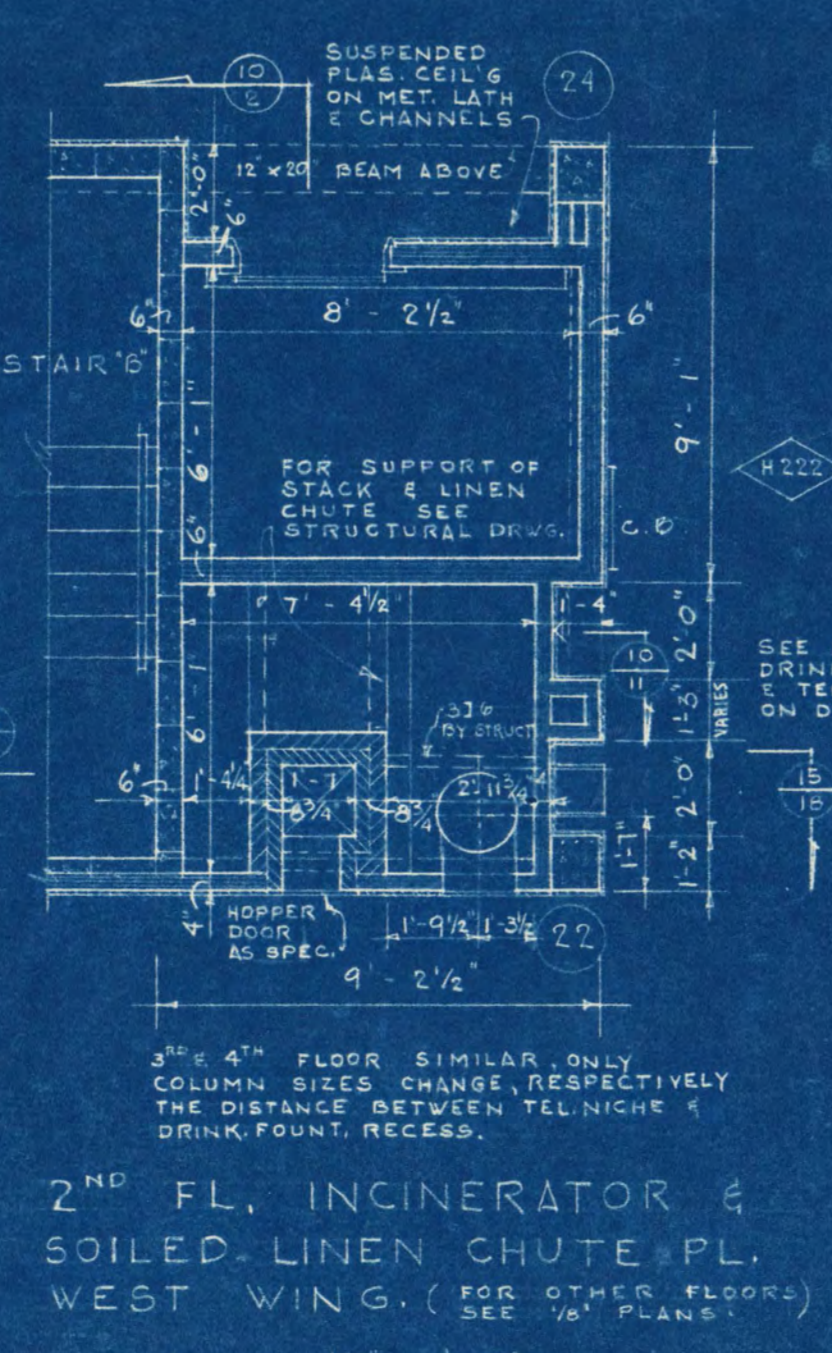
ELEVATOR DETAILS.



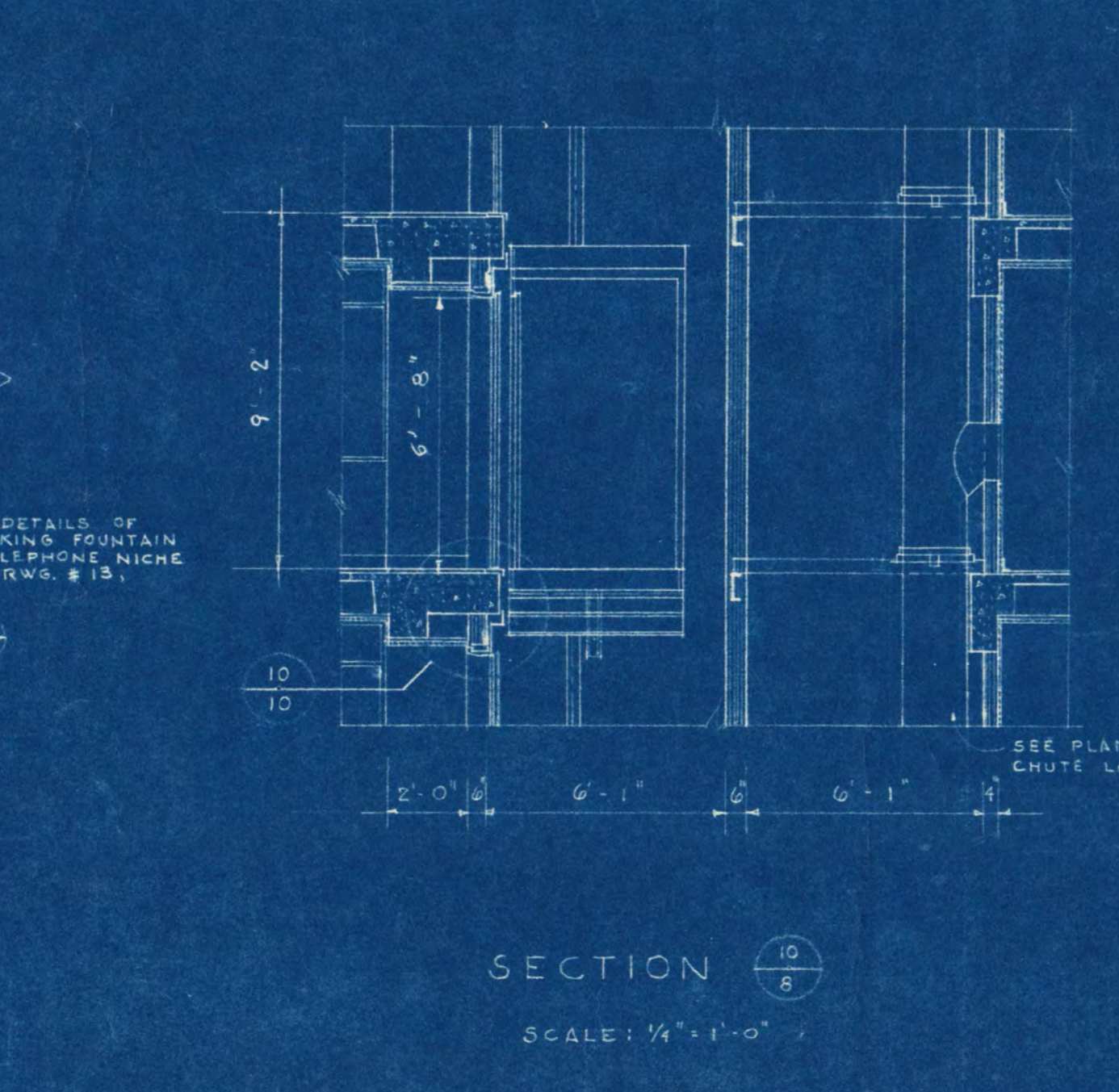
SECTION 10
SCALE: 1/4" = 1'-0"



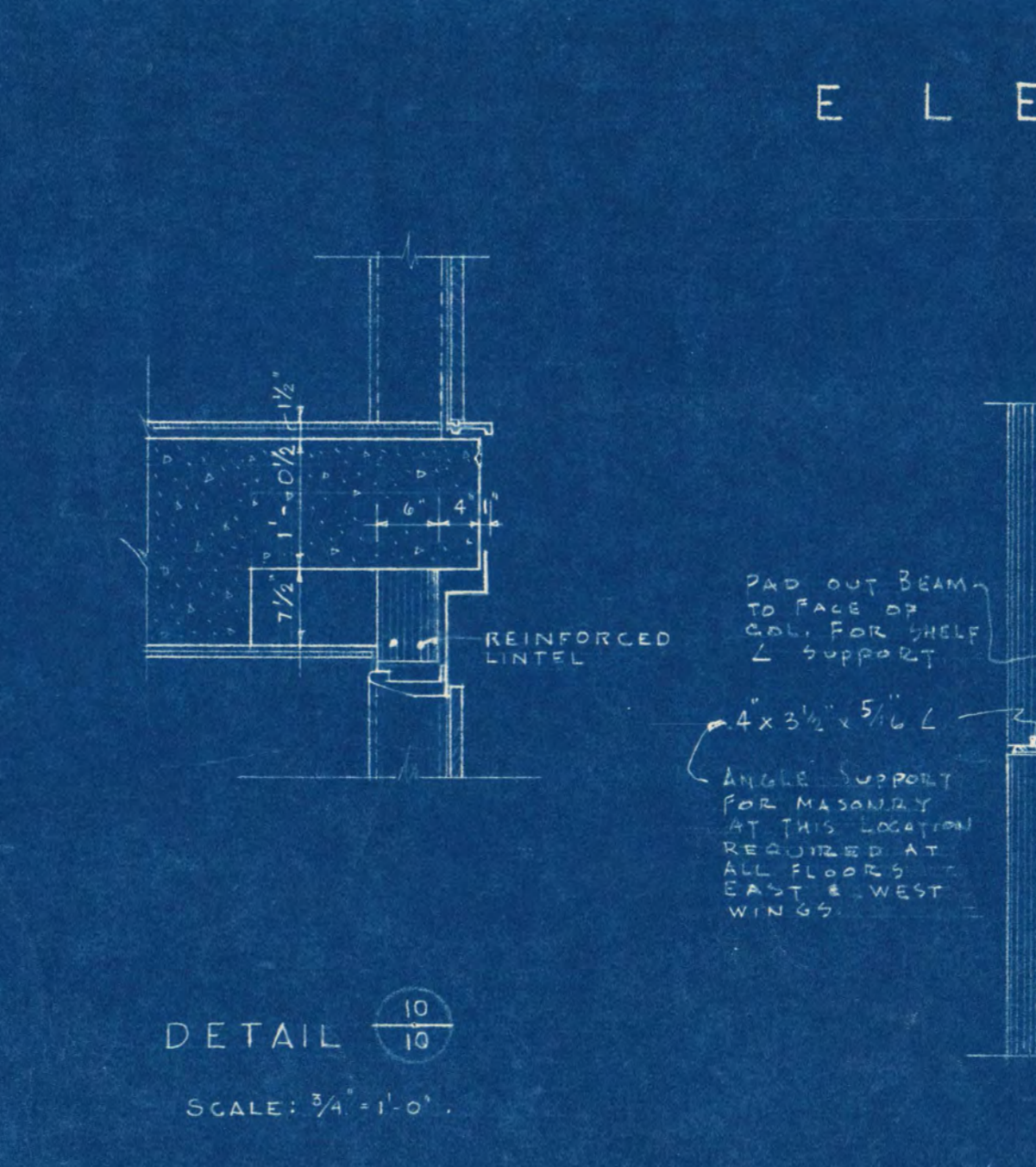
SECTION 10
SCALE: 1/4" = 1'-0"



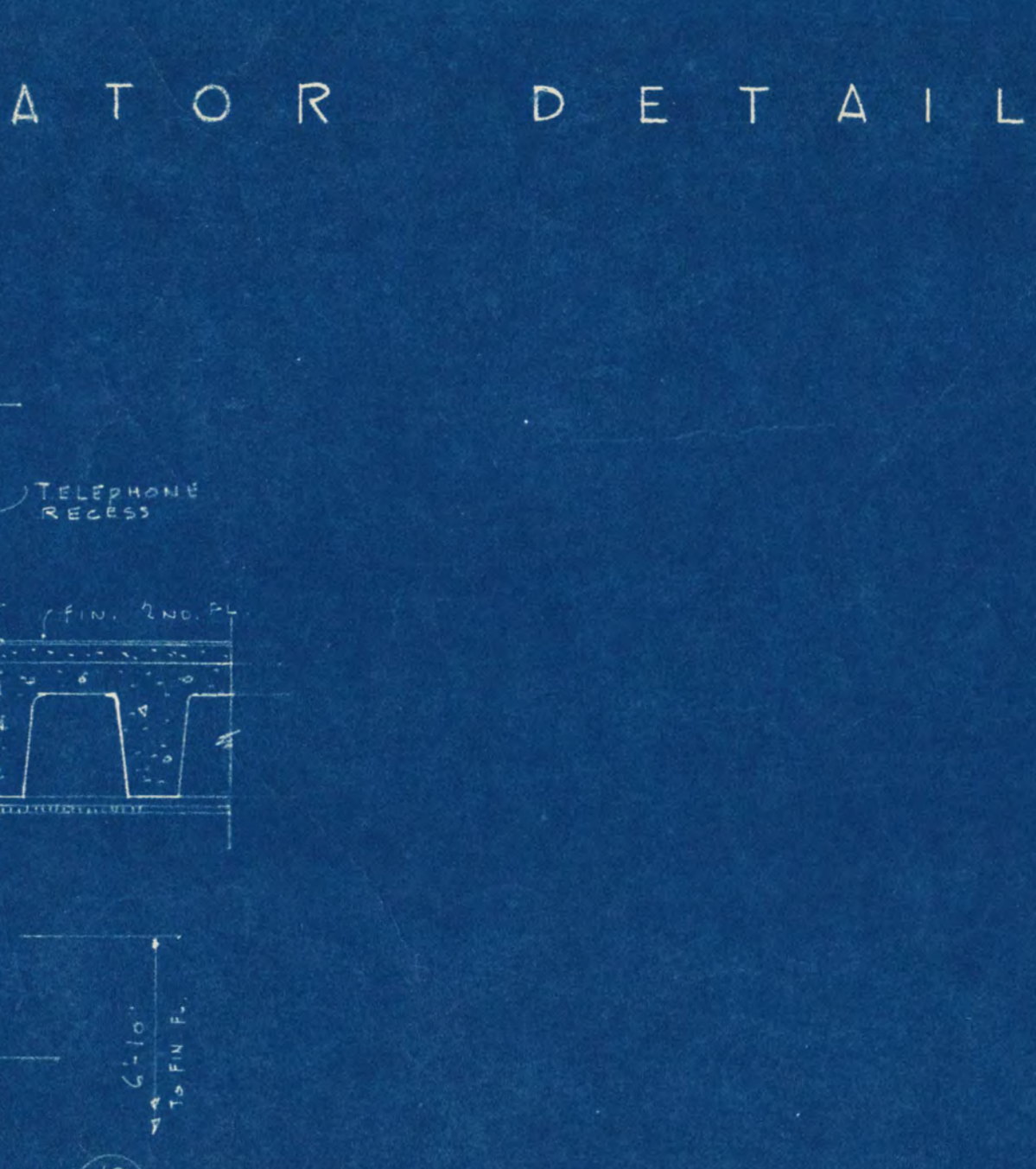
SECTION 10
SCALE: 1/4" = 1'-0"



SECTION 10
SCALE: 1/4" = 1'-0"



DETAIL 10
SCALE: 3/4" = 1'-0"



SECTION 10
SCALE: 3/4" = 1'-0"

DETAILS FOR INCINERATOR & SOILED LINEN CHUTE, WEST WING

ELEVATOR DETAILS.

ADDITION TO SHOEMAKER HALL
ST. CLOUD STATE COLLEGE
ST. CLOUD, MINNESOTA

FRANK W. JAKSCH & ASSOCIATES, INC.
ARCHITECTS & ENGINEERS
ST. CLOUD, MINNESOTA

DESIGNED BY: *Frank W. Jaksch*

DATE: 5-2-55

PROJECT NO. 10

SHEET NO. 10

APPROVED BY: _____

APPROVED BY: _____