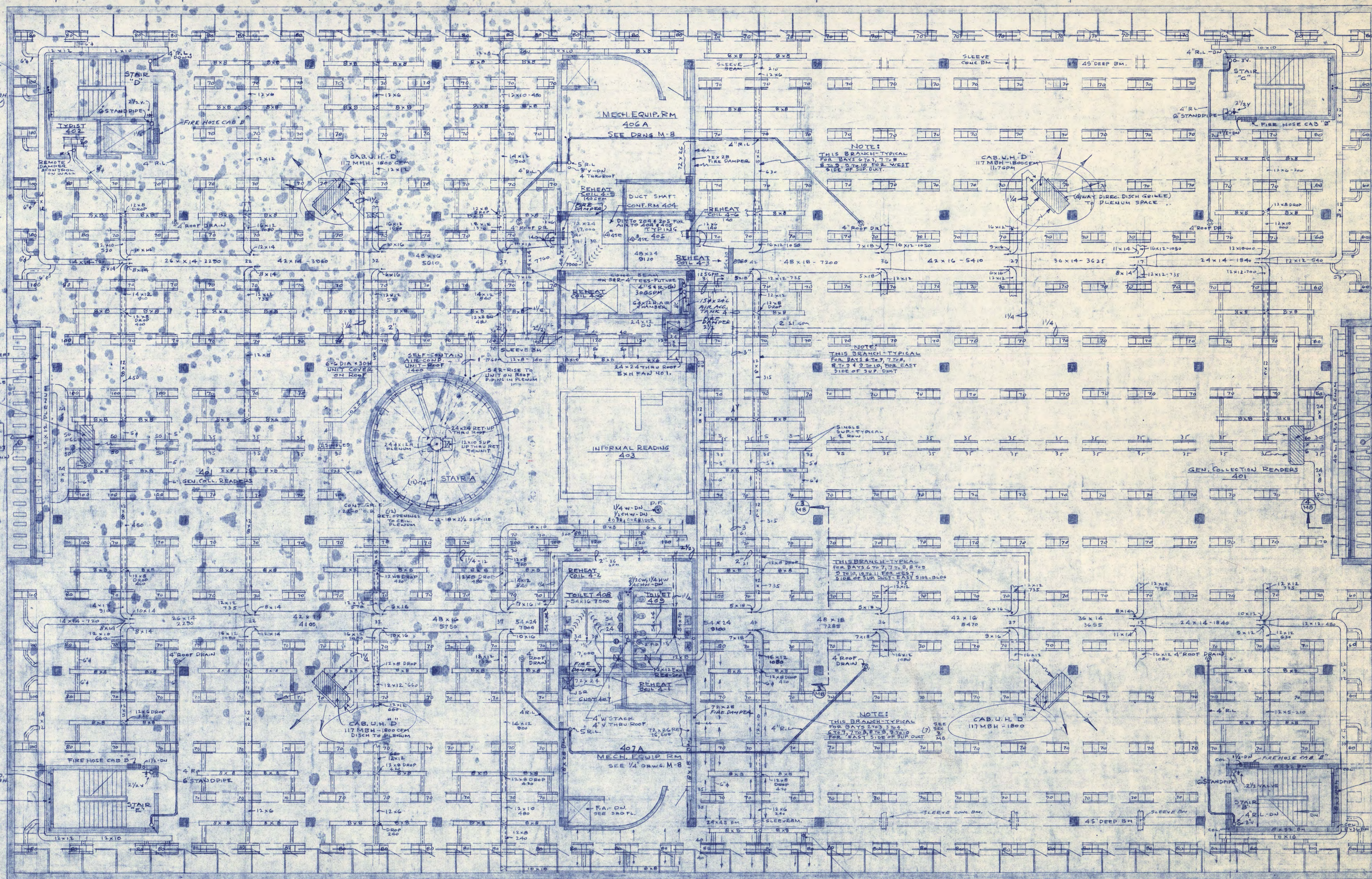


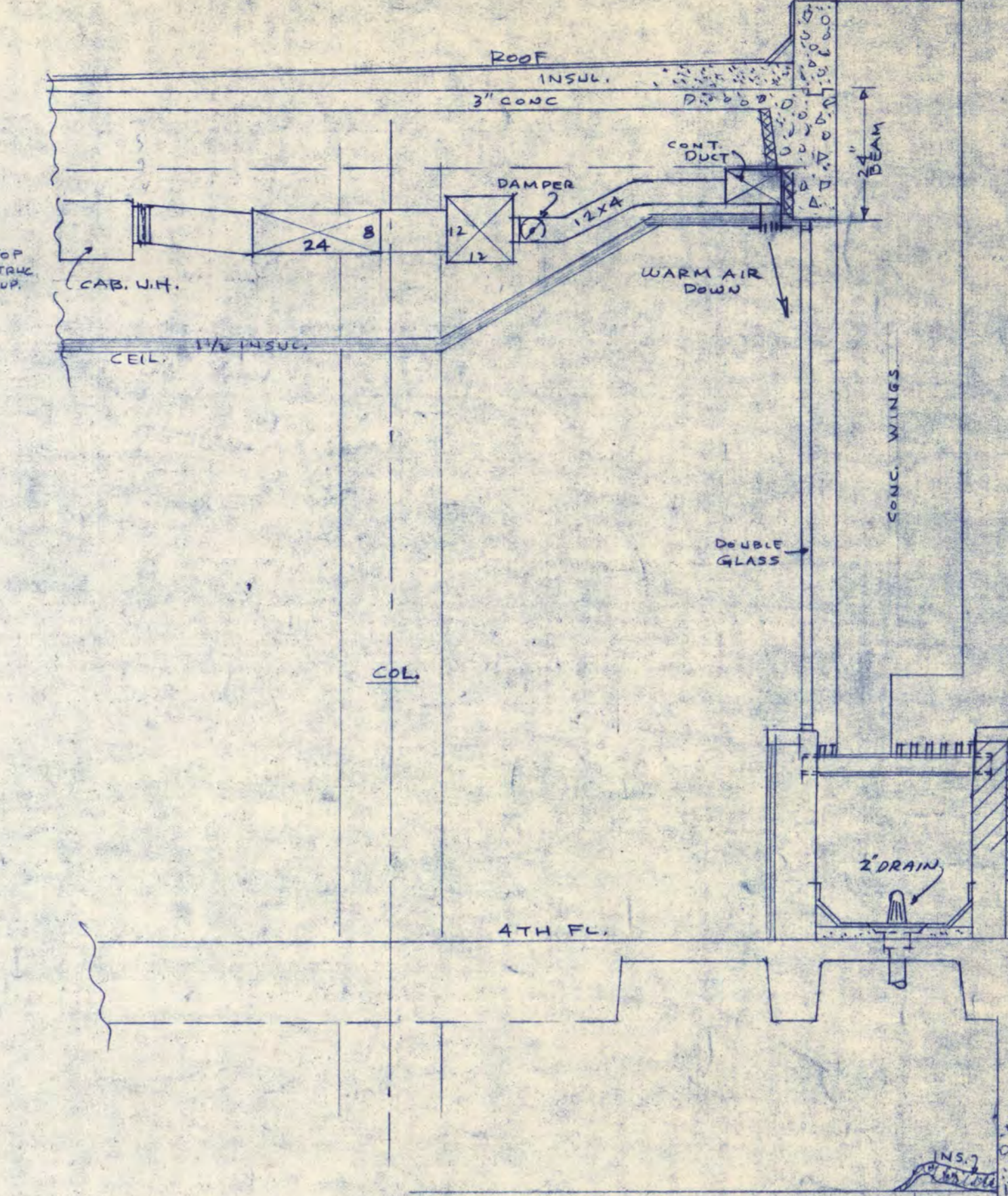
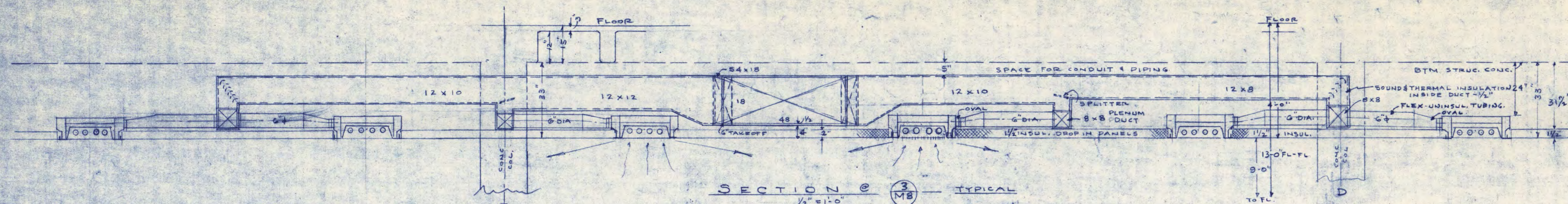
NOTE: ALL LIGHT TROFFERS TO RETURN AIR TO PLENUM SPACE.
 2" x 4" - 4.8 CFM THIN LAMP COND ONLY - 8" P. OF HEAT REMOVAL @ 80 DEG/HR - TEMP 85

THIRD FLOOR PLAN
 1/8" = 1'-0"



INSTALL THIS FL. - 437 DOUBLE 24SE } 480 FEET.
 1 1/2\"/>

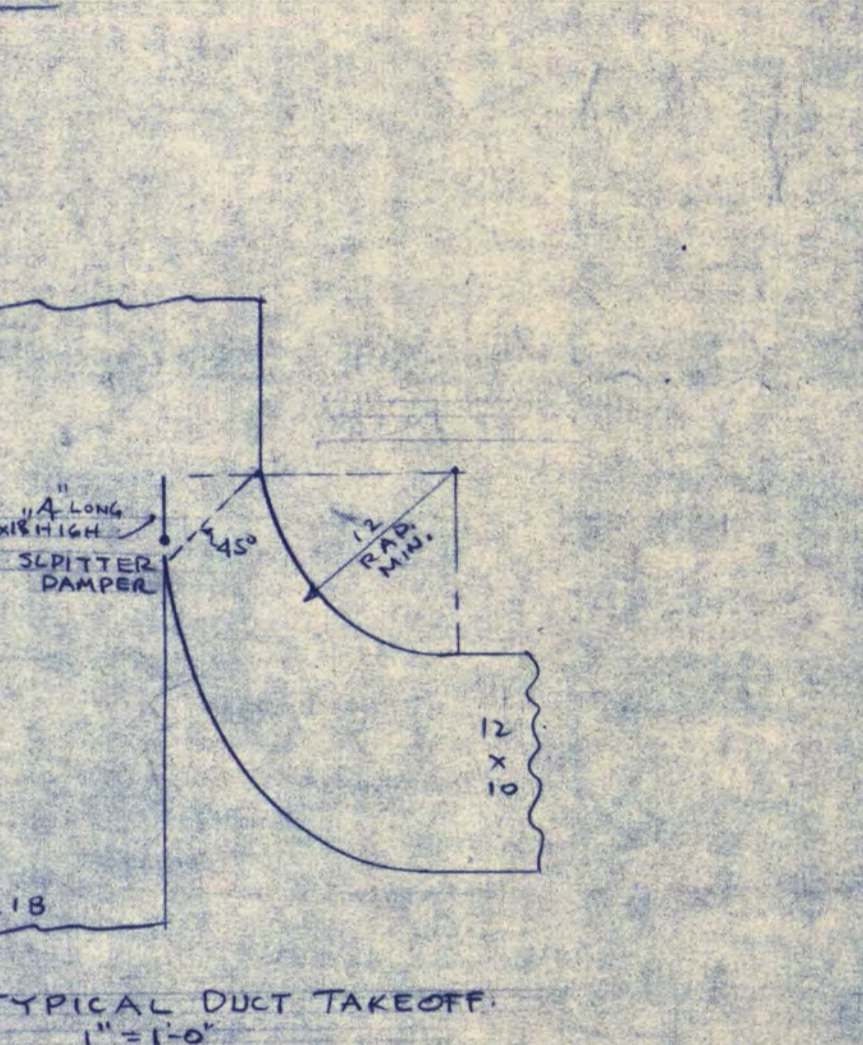
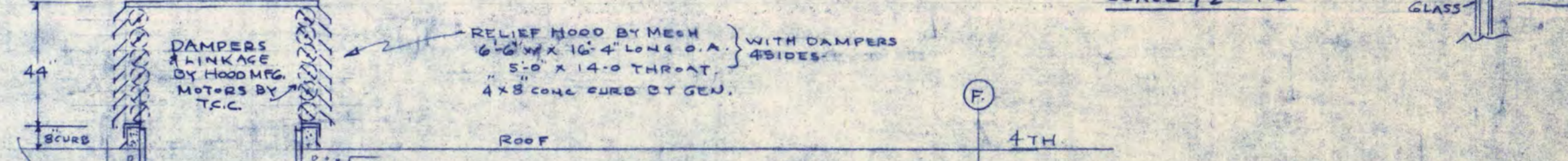
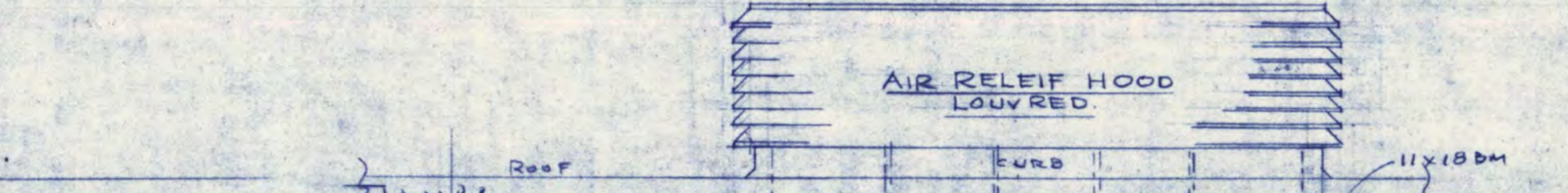
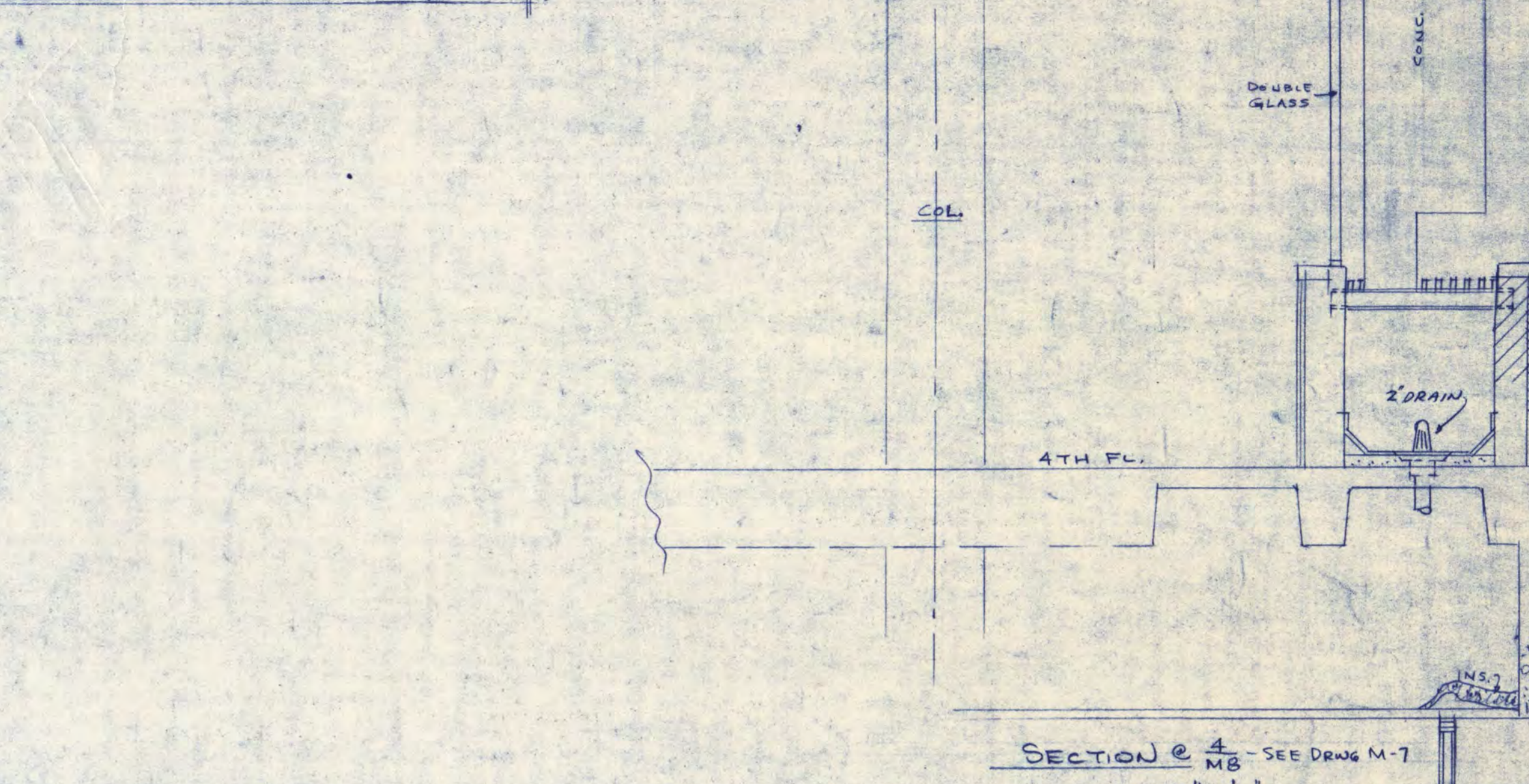
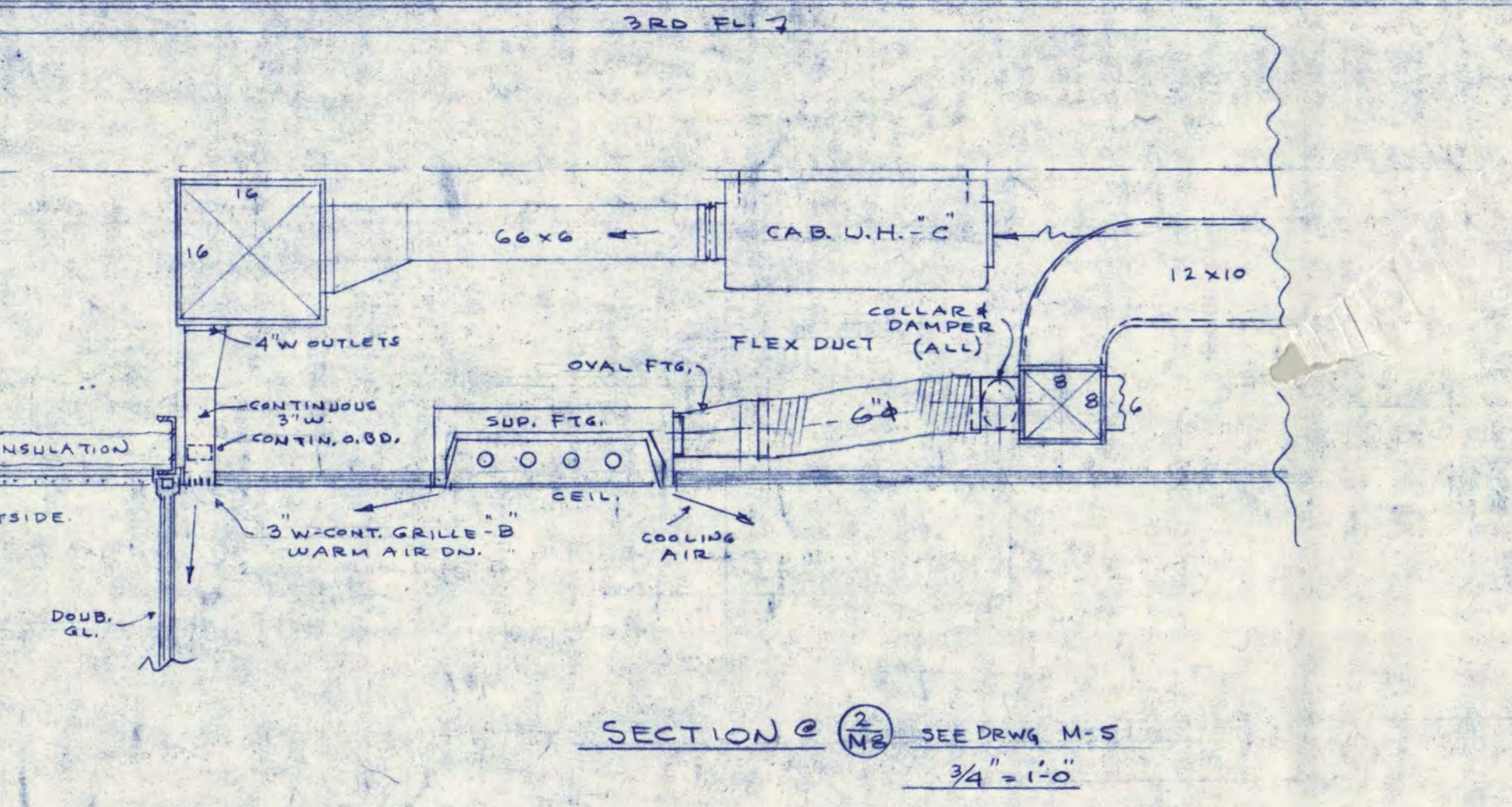
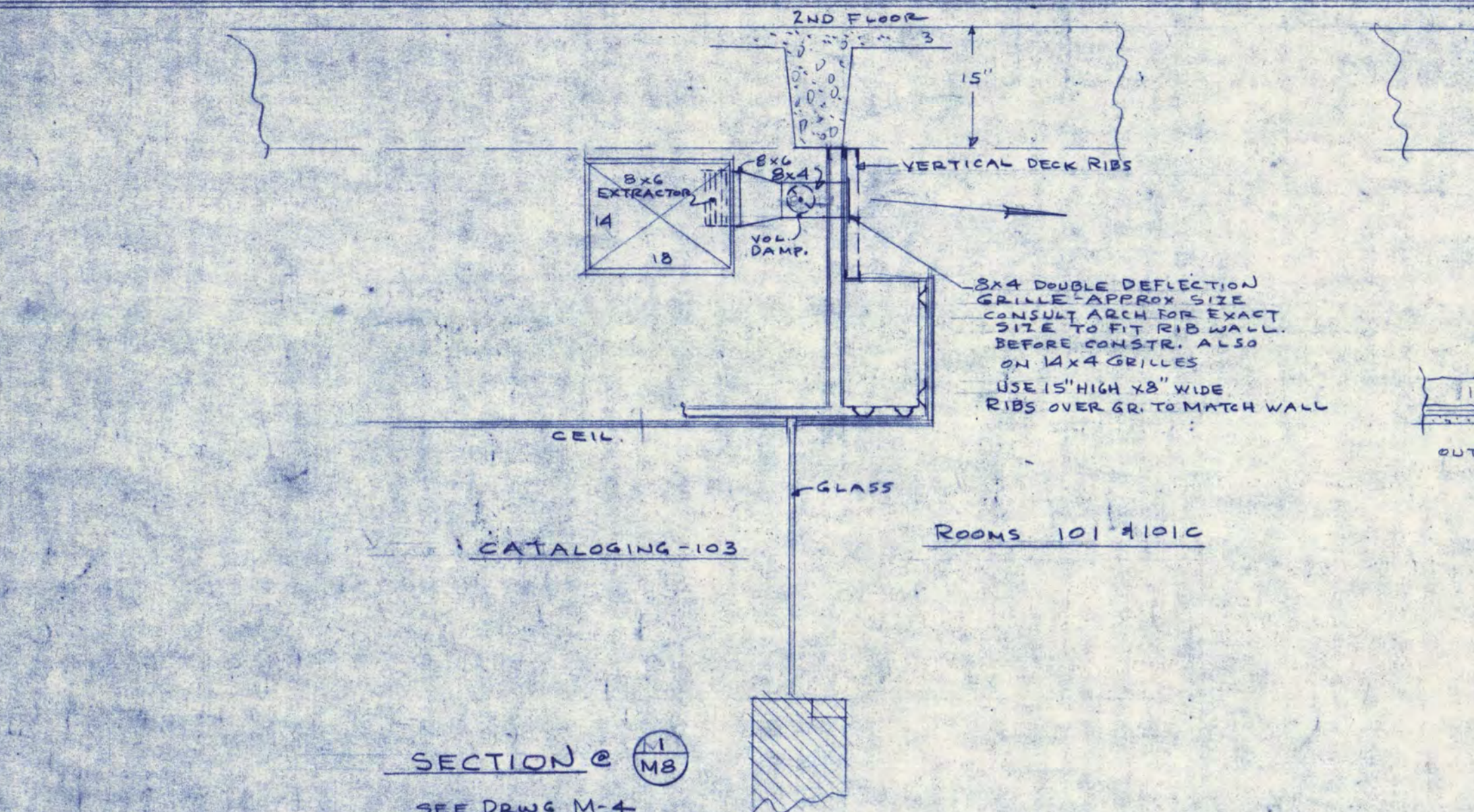
FOURTH FLOOR PLAN
 1/8\"/>



- 2-FT. HD GAUGE
BAL. COCK 'A'
FRESH-AIR GAUGE
SUP. A
- 2 DIA. X 6
AIR EXHAUSTER
MANV. BEERS
COIL
BAL. COCK 'B'
1. CONSULT MFG. DATA SHEETS FOR PRESS. DROP-COIL ADD P.D. TO TOTAL.
 2. READ GAUGES 1 & 2. DIFF. WITH ALL FLOW THRU T.C.V. & COIL WITH BAL. COCK 'B' CLOSED & TOTAL P.D.
 3. IF TOTAL HD. IS LESS THAN REQ'D, REOPEN COCK 'B' & REPEAT TO NEXT COIL-BALANCE COIL ONLY THAT HAVE P.D. IN EXCESS-REQ'D.
 4. ADJUST BAL. COCK 'A' TO REQ'D. P.D. TOTAL DIFF. IF REQS. EXCESS.
 5. TRANSFER T.C.V. FOR FLOW LESS COIL & THRU T.C.V. & BY PASS.
 6. ADJUST COCK 'B' TO READ P.D. DIFF. OF T.C.V. ONLY.
- PROCEDURE TO BE FOLLOWED TO BALANCE WATER FLOW THRU ALL COILS, HEAT-REHEAT & COOLING.

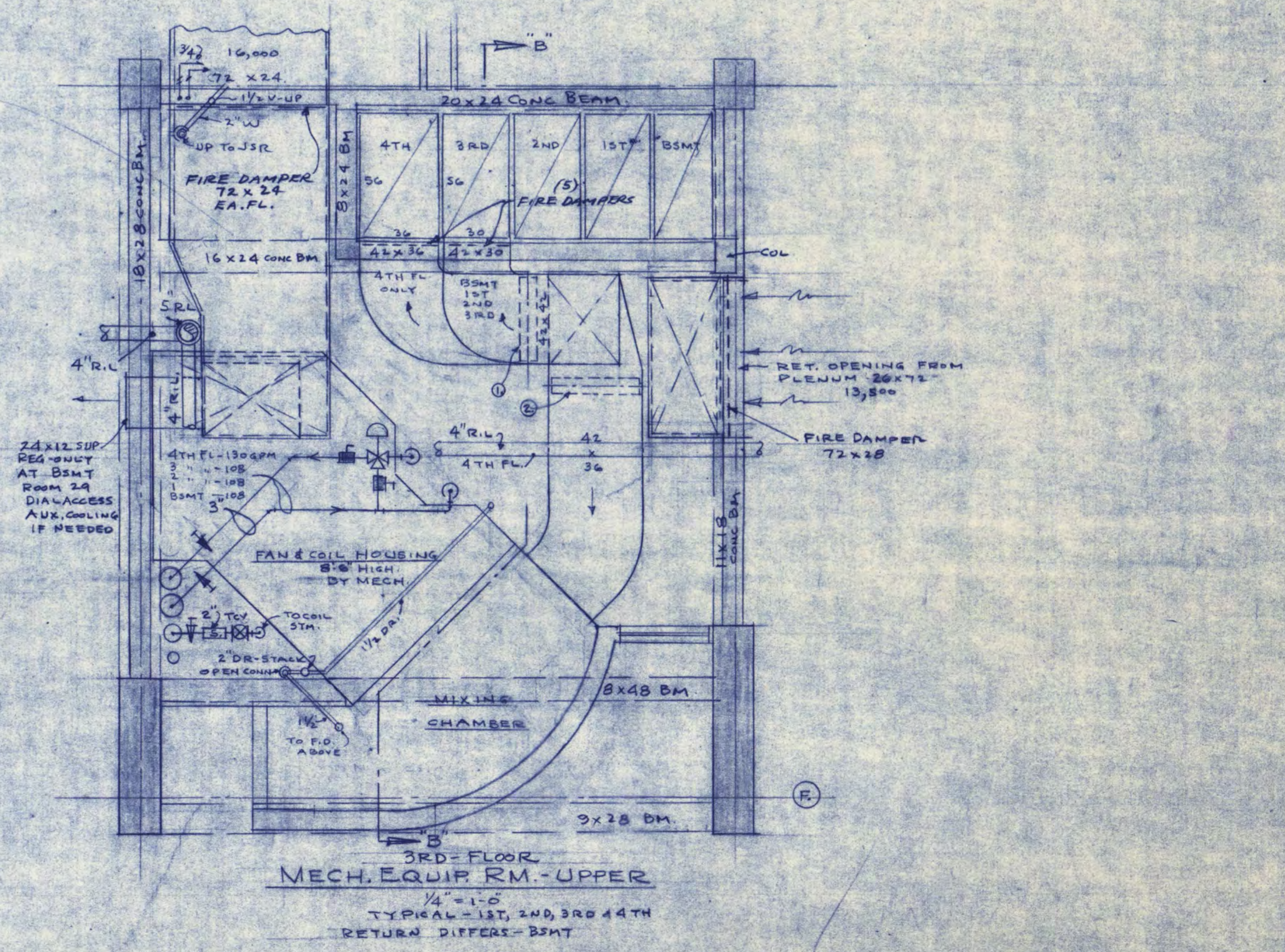
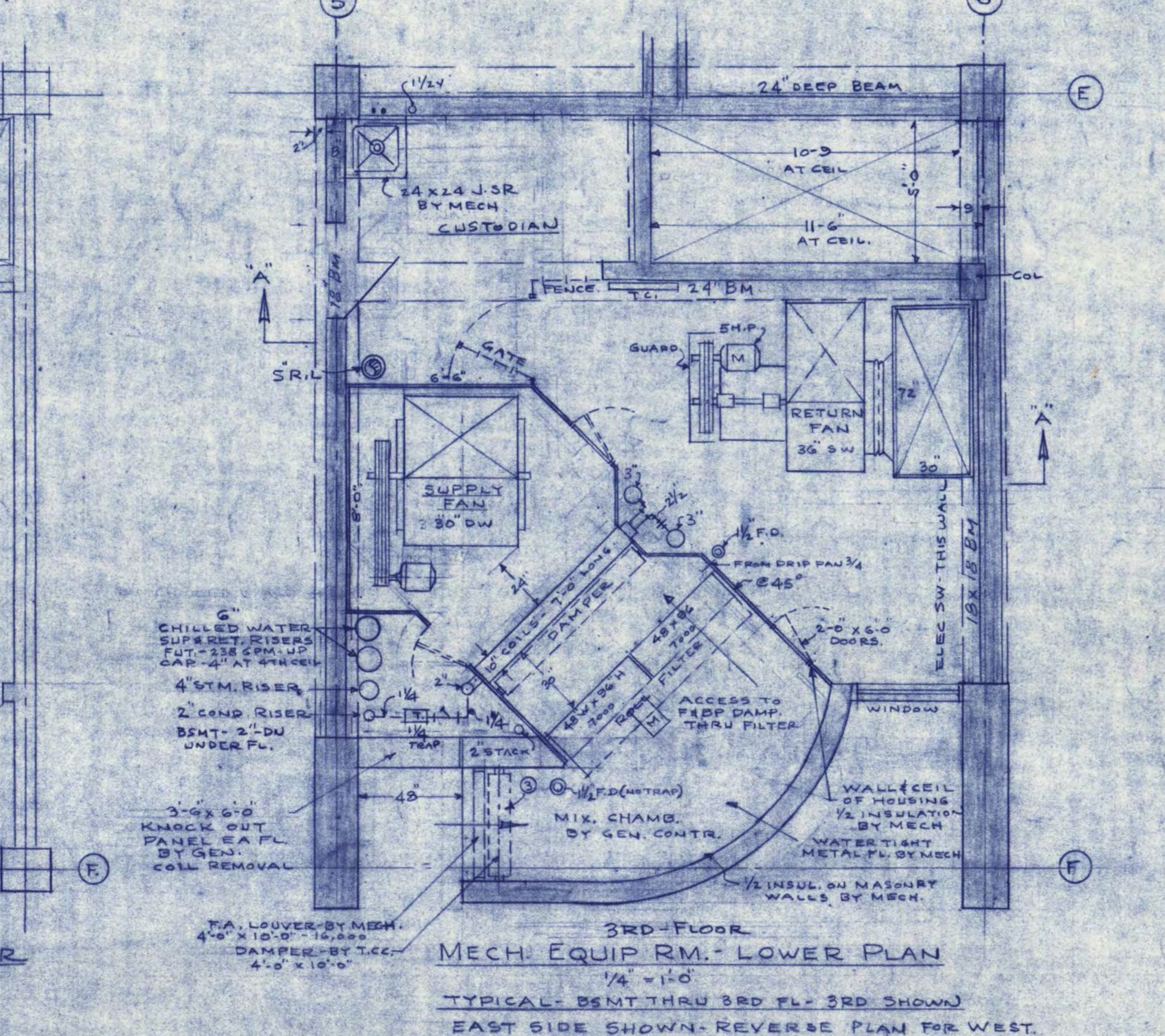
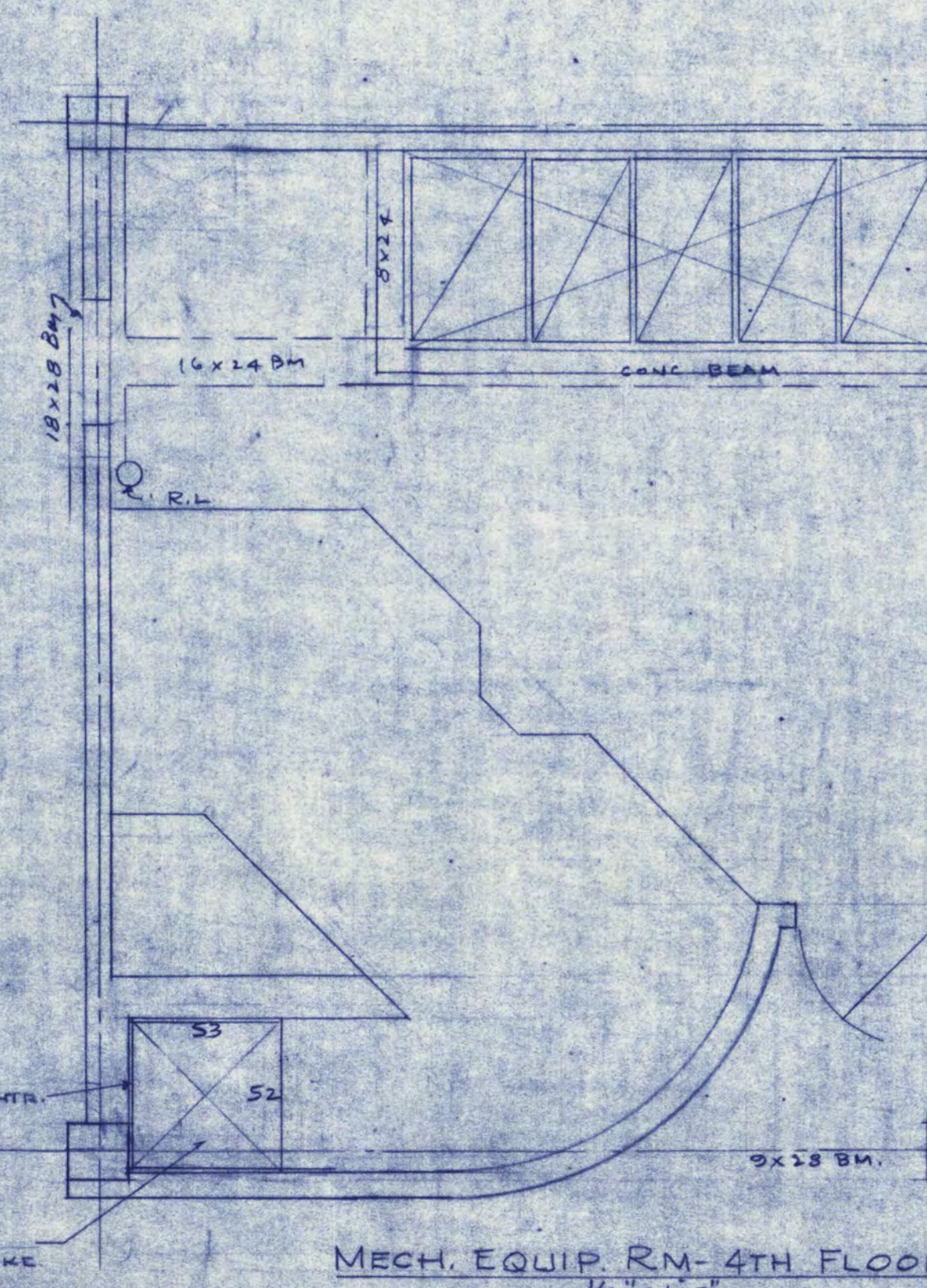
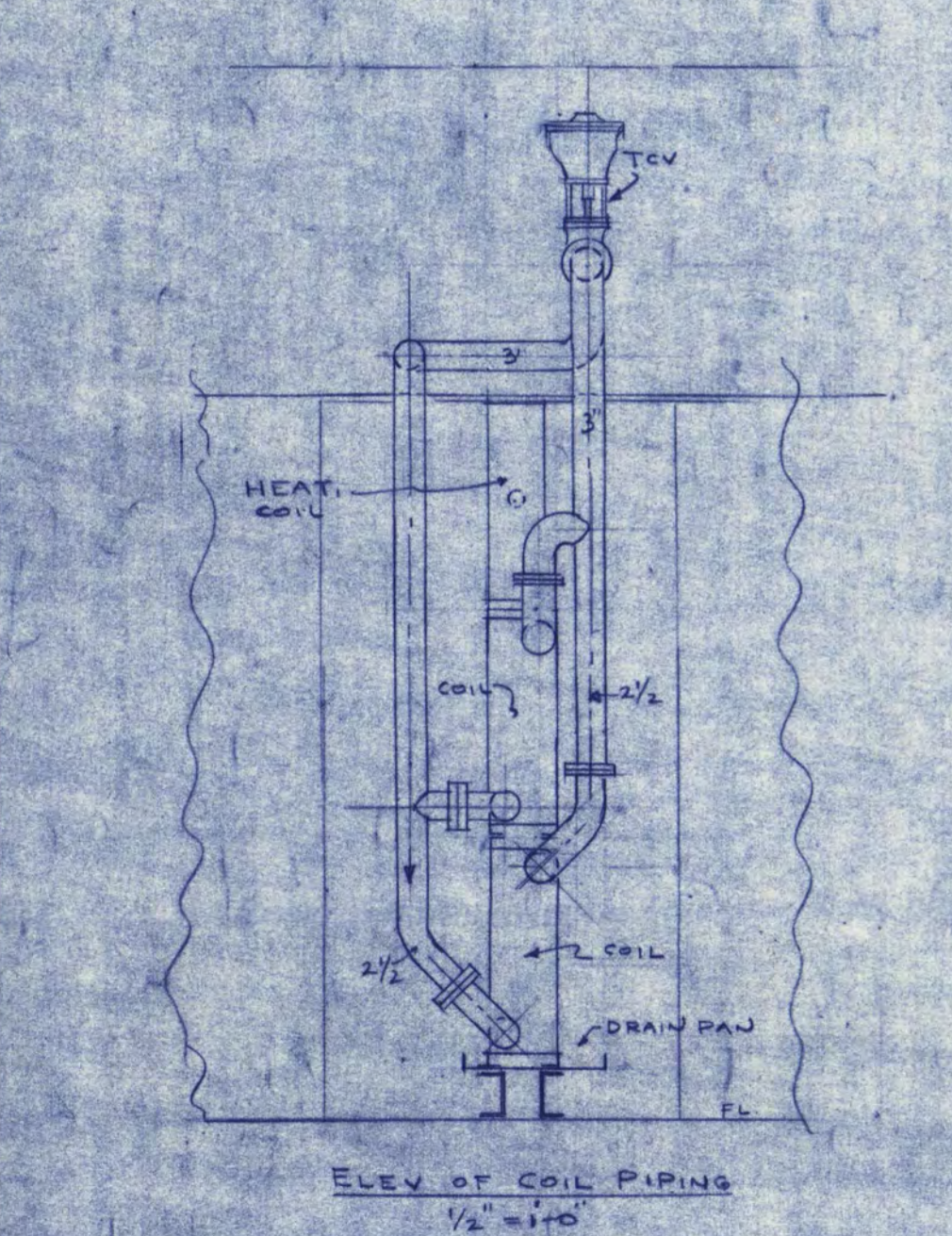
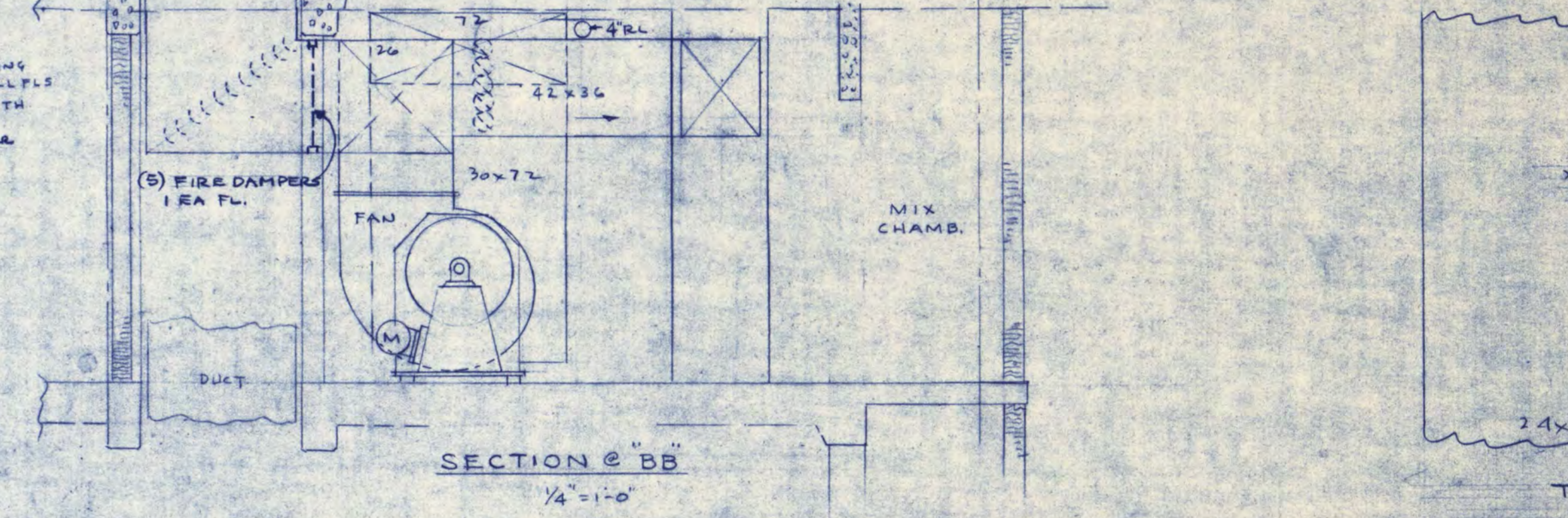
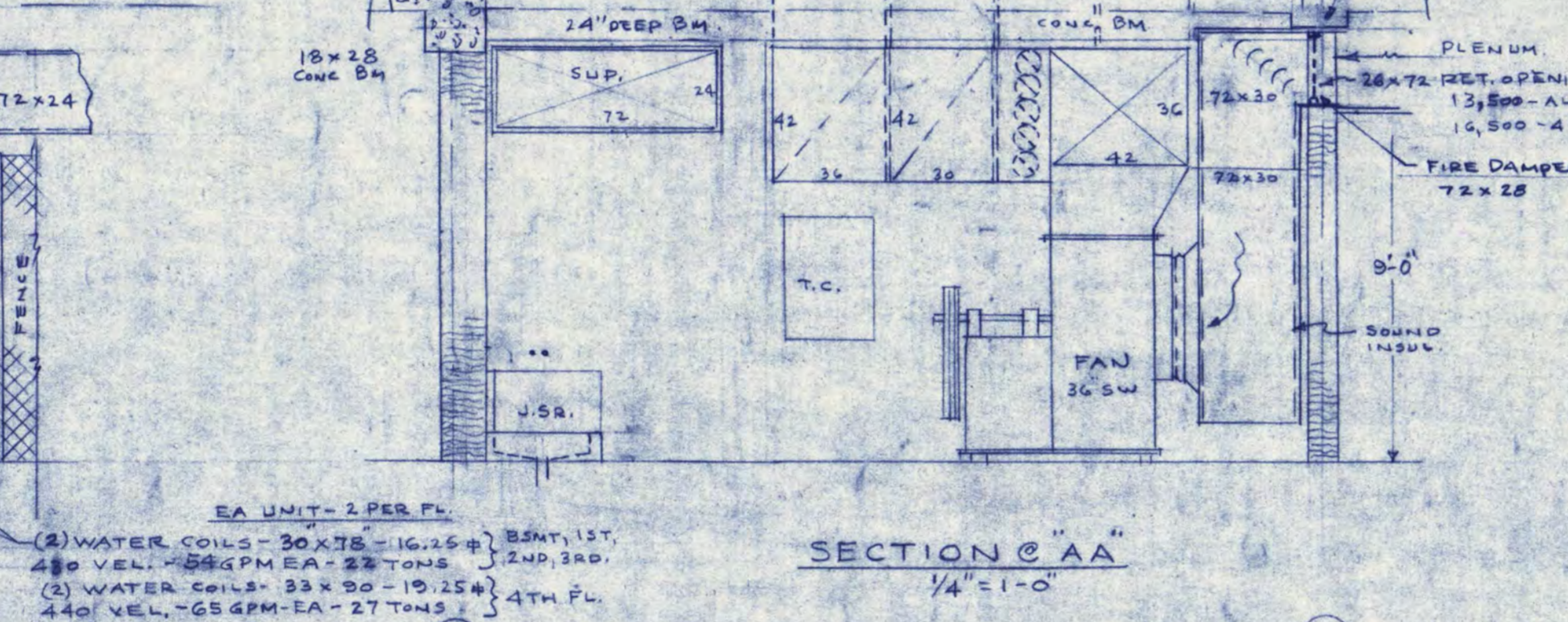
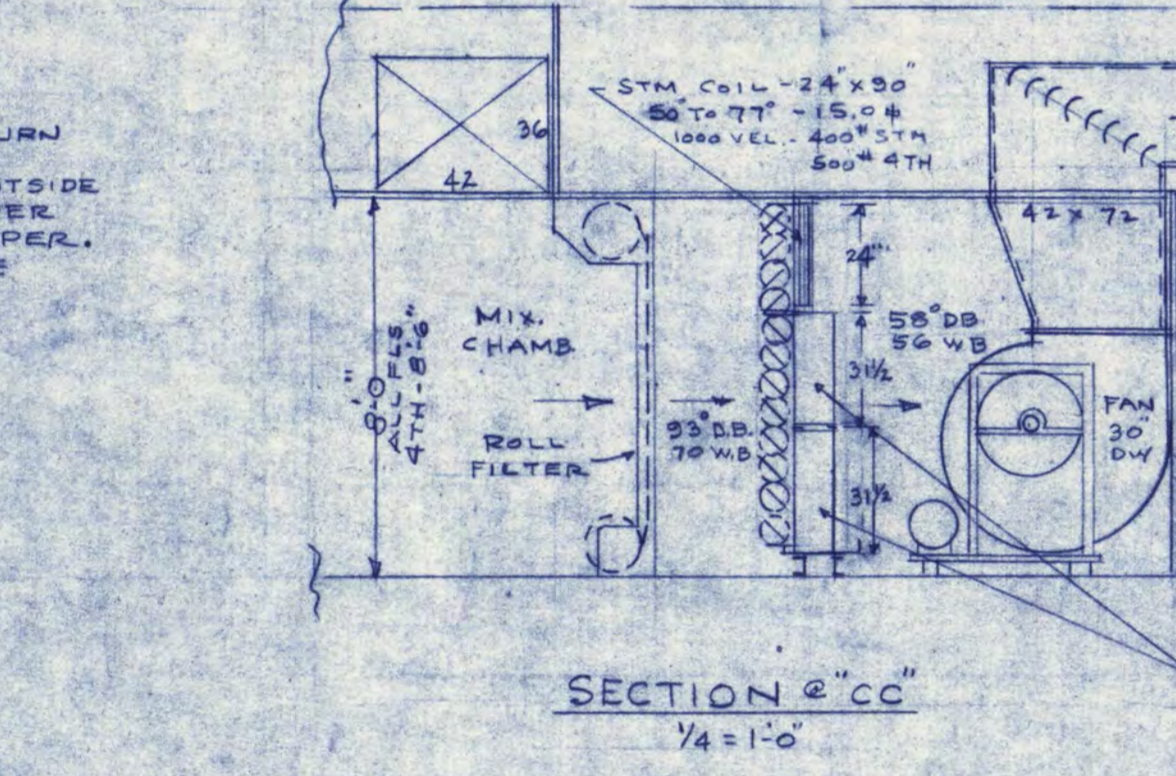
ABOVE DETAIL IS TYPICAL. GAUGES 1 & 2 (IF REQ'D) ARE TO BE MOVED FROM COIL TO COIL AS BAL. IS DONE - 1/4 COCKS-REMAIN.

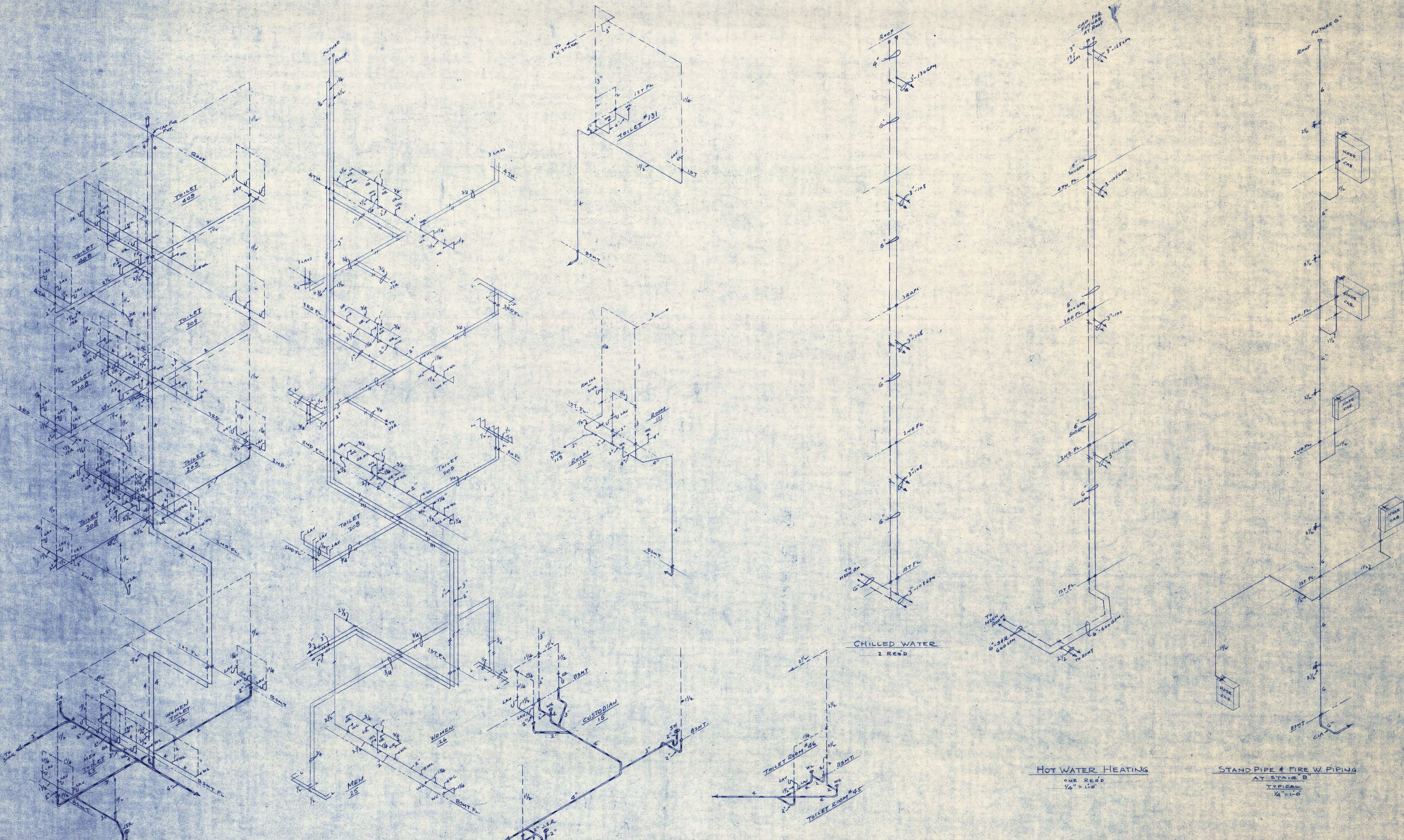
FURNISH & INSTALL ALL GATE VALVES, BALANCING COCKS, CHASE NO. 305 OR 324 TRAPS, SIZES FOR REHEAT COILS SAME AS TEMP. CONTROL VALVE FOR CAB. W.H.-SEE SCHEDULE-SPECS.



DAMPER OPERATION SEQUENCE

DAMPER 1 IS EXH. DAMPER 2 IS RETURN DAMPER 3 IS FRESH AIR. DAMPERS 1 & 2 TO PASS 25% WHEN OUTSIDE TEMP. IS ABOVE 50° OR BELOW -20°. DAMPER NO. 2 TO PASS 75%. ALL DAMPERS TO OPER. IN PROPORTION TO GRADUATED SCALE FROM 25% TOWARDS 100% FRESH AIR ACCORDING TO OUTSIDE TEMP.





W.V. PIPING DIAGRAM
MAIN STACK
1/4" = 1'-0"

WATER PIPING DIAGRAM
MAIN STACK
1/4" = 1'-0"

HOT WATER HEATING
ONE REED
1/4" = 1'-0"

STAND PIPE & FIRE W. PIPING
AT STAIR B
TYPICAL
1/4" = 1'-0"

RISER DIAGRAMS