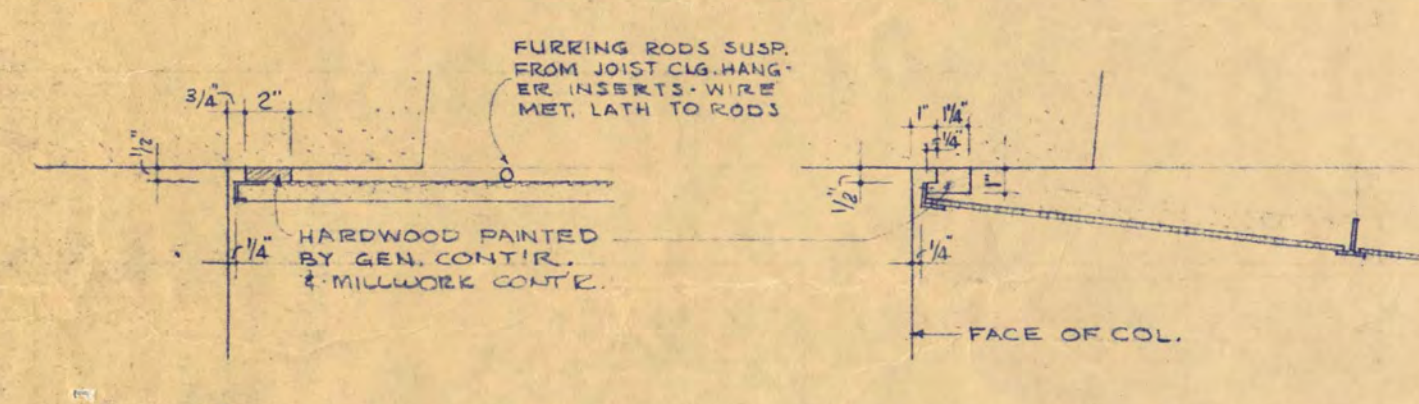


SECOND FLOOR PLAN

PLAN SECTION DRAWN AT THIRD FLOOR OTHER FLOORS SIMILAR

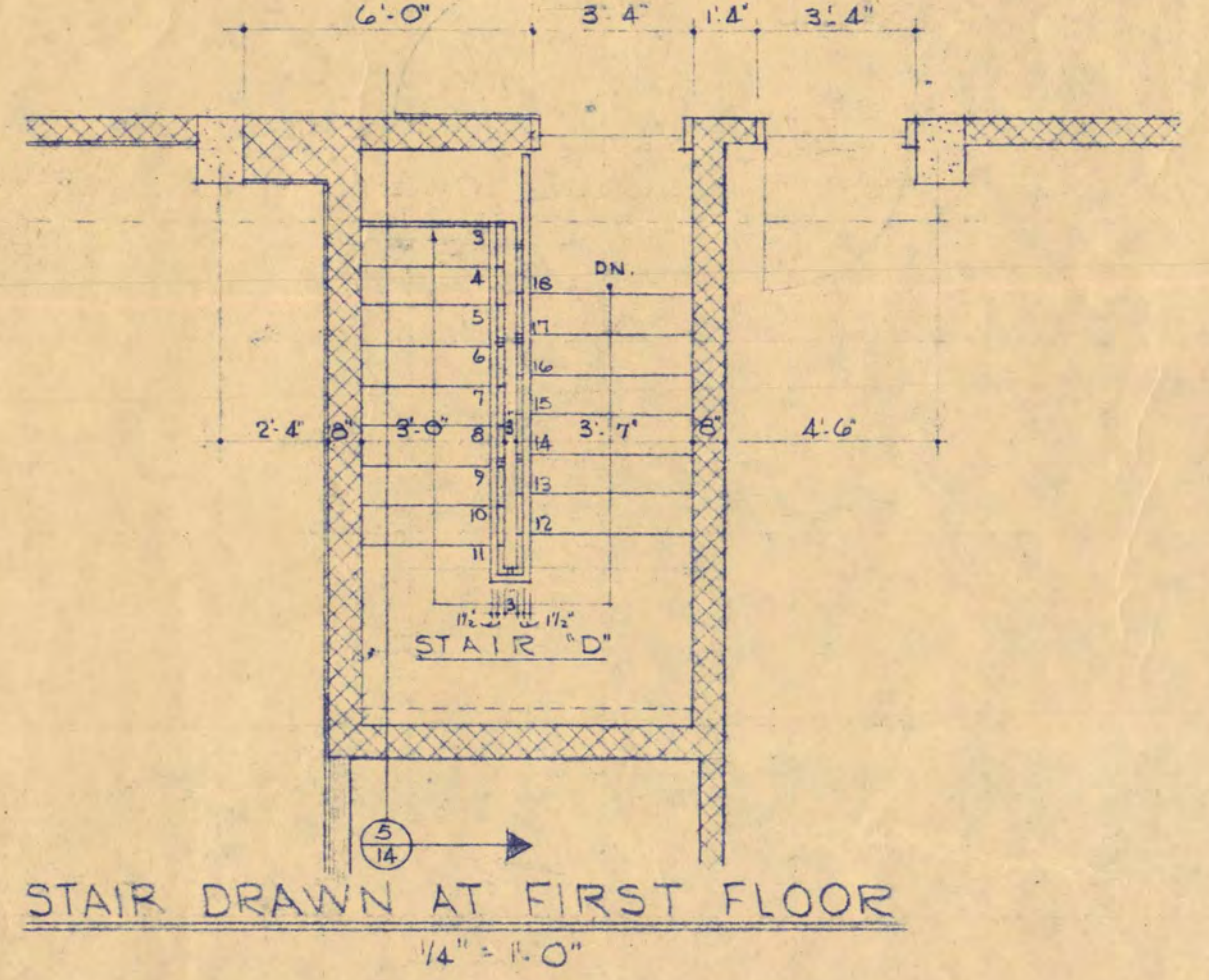
FURNITURE NOTES:

- (A) 30"x60" DOUBLE PEDESTAL DESK NOT IN CONTRACT
- (B) 30"x85" "
- (C) 1/2" WIDE MET COAT RACK SEE SPECS. IN BID CONTRACT
- (D) FILES NOT IN CONTRACT
- (E) CHAIRS " "

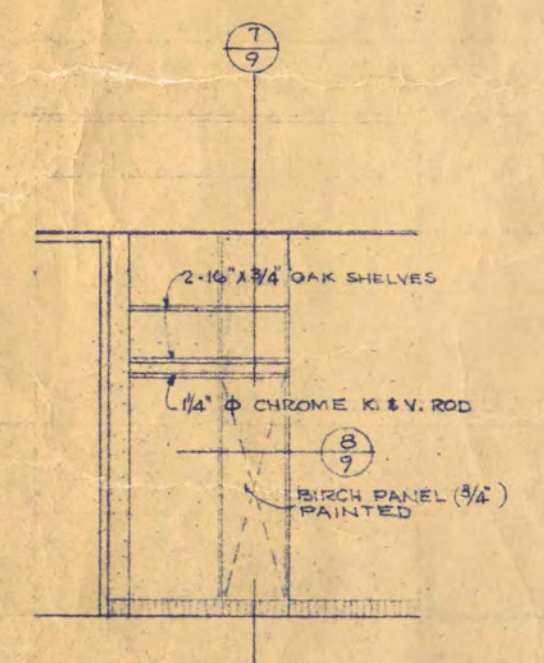


1 PLAS. GLG. AT WDO'S. 1/2" x 1'-0"

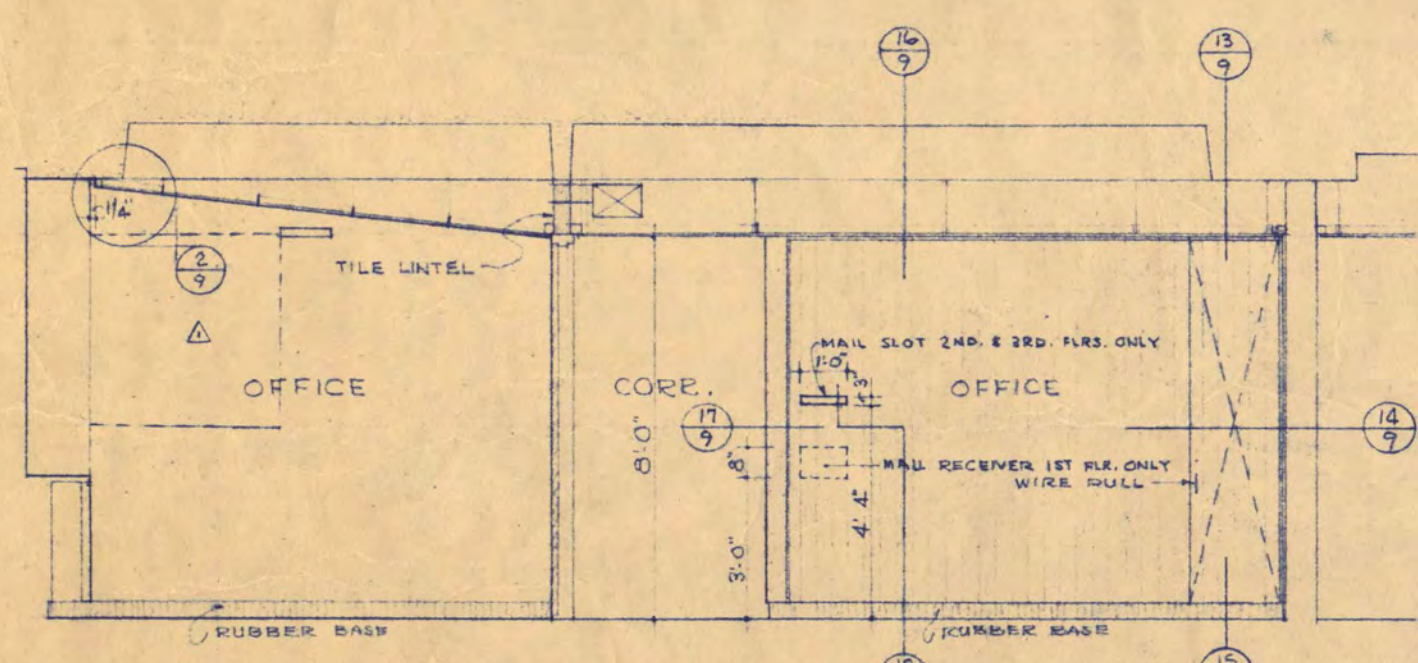
2 MET. CLG. AT WDO'S. 1/2" x 1'-0"



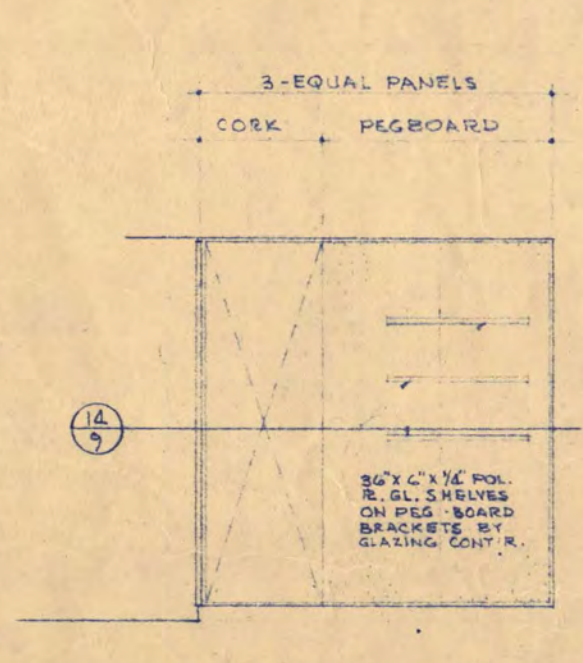
STAIR DRAWN AT FIRST FLOOR 1/4" = 1'-0"



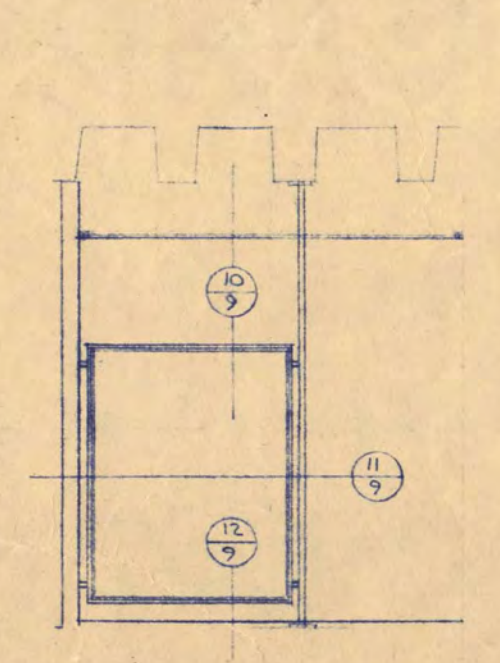
3 COAT HANGING RECESS ELEV.



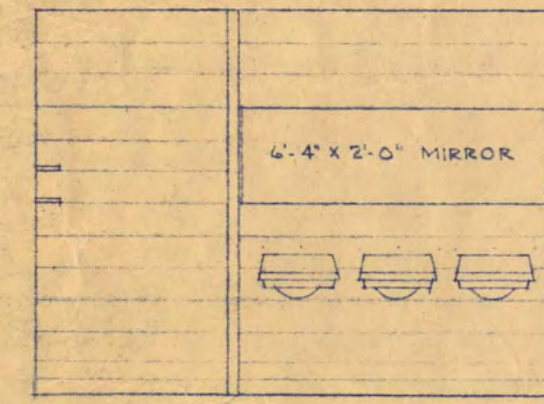
4 ELEVATION OF SMALL OFFICE & BA. WALL GEN. OFF.



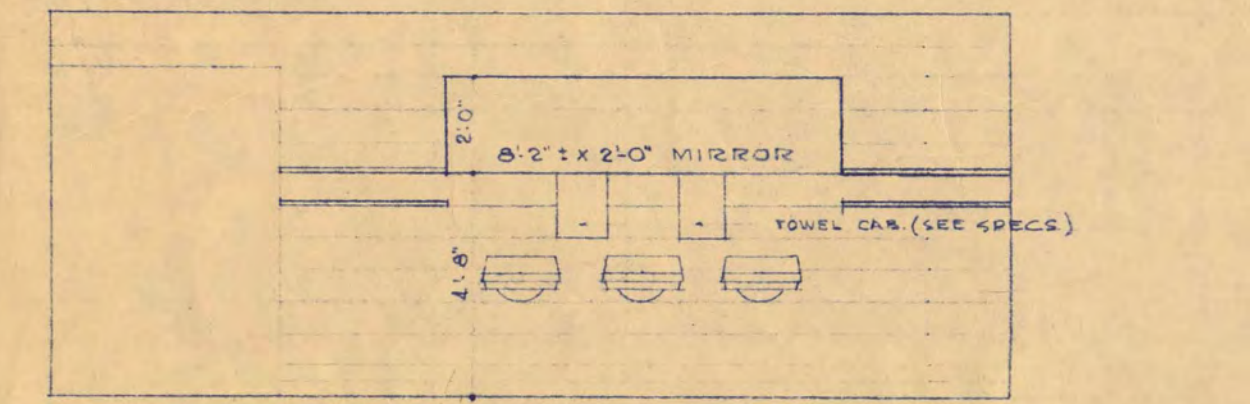
5 DISPLAY CASE ELEV.



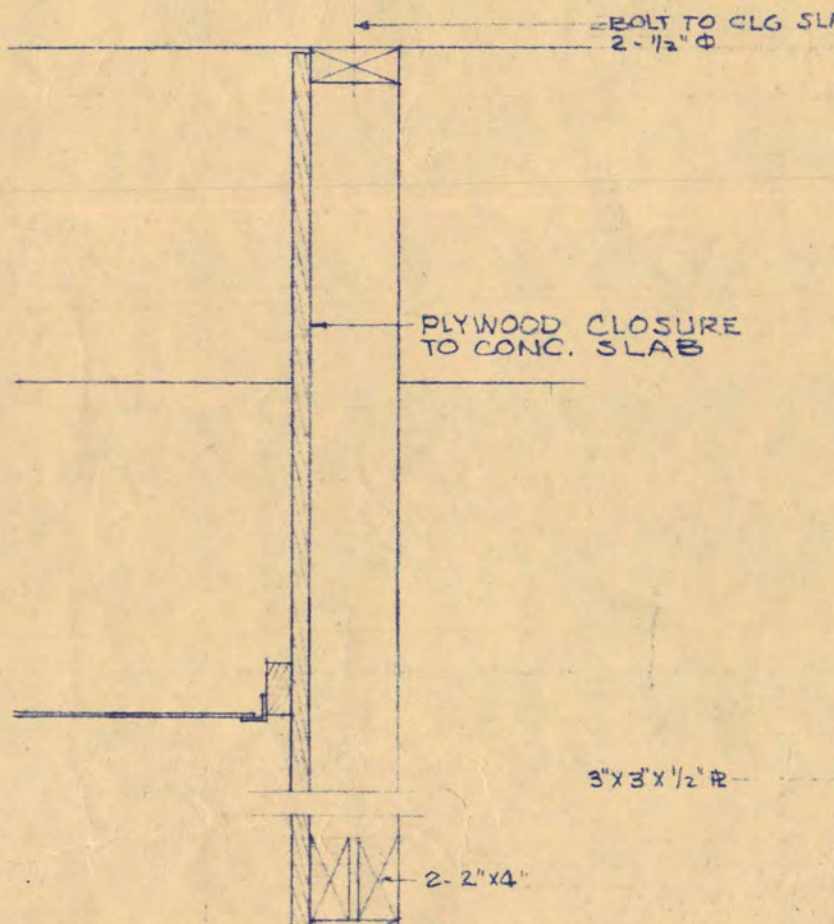
6 TOILET SCREEN



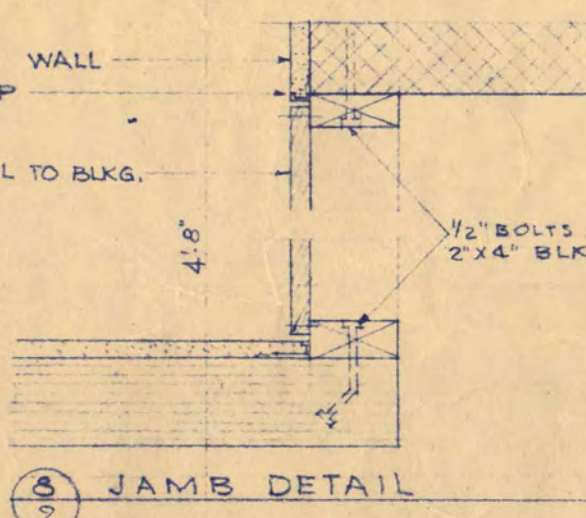
20 WEST WALL WOM. TOILET



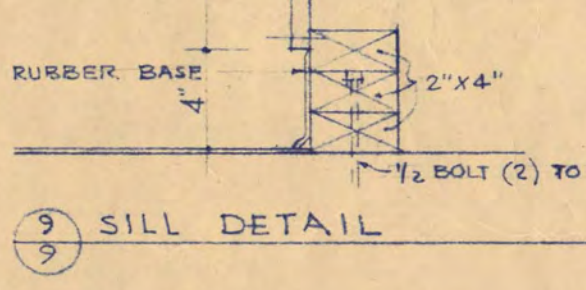
21 NORTH WALL ELEVATION MEN'S TOILET



7 HEAD DETAIL

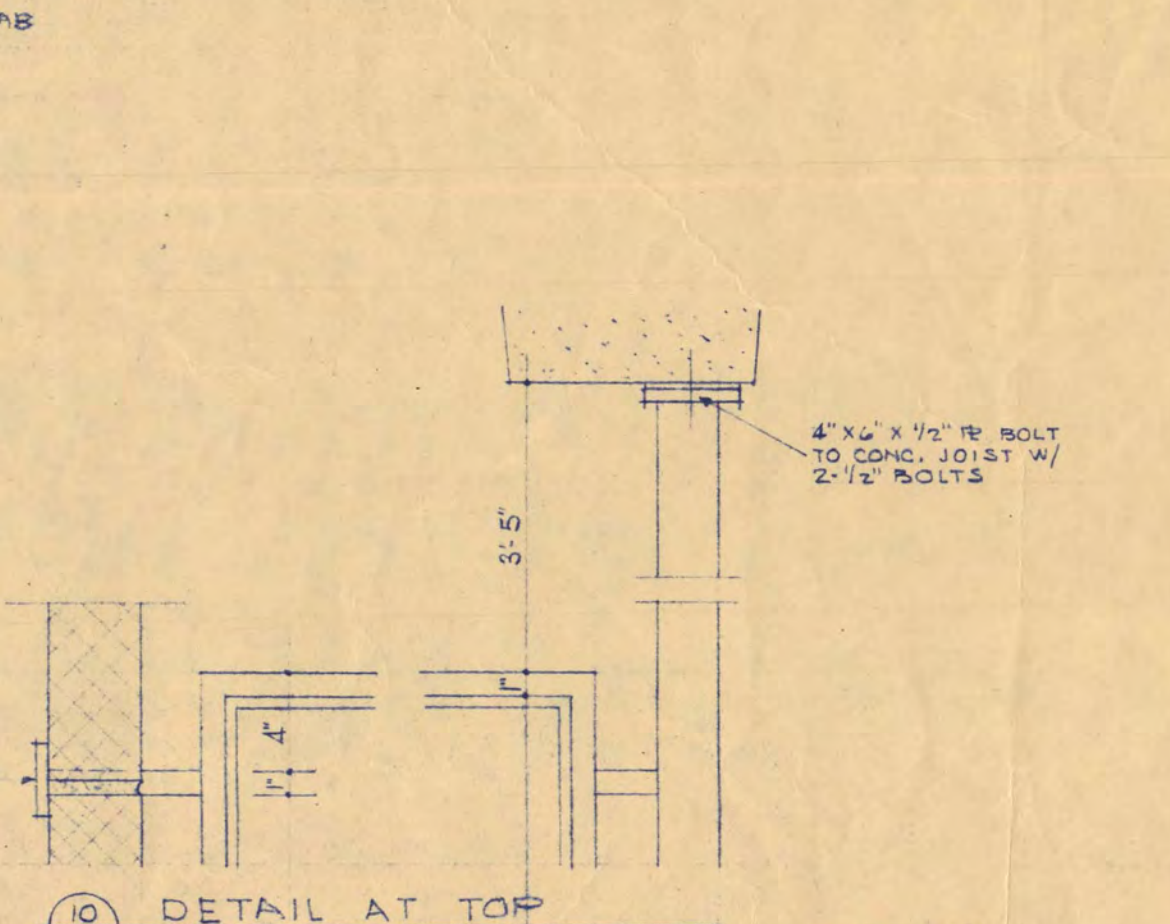


8 JAMB DETAIL

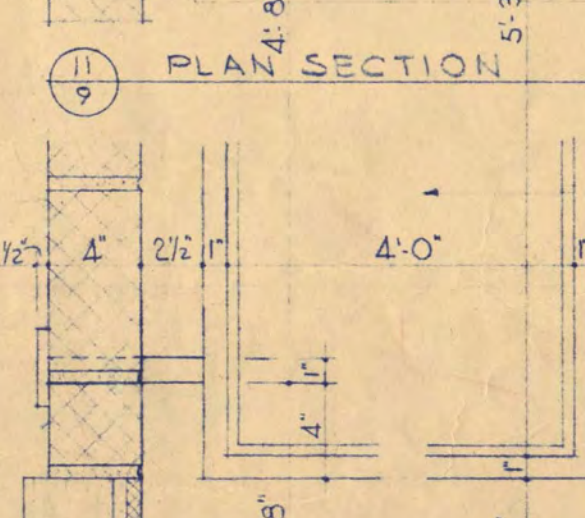


9 SILL DETAIL

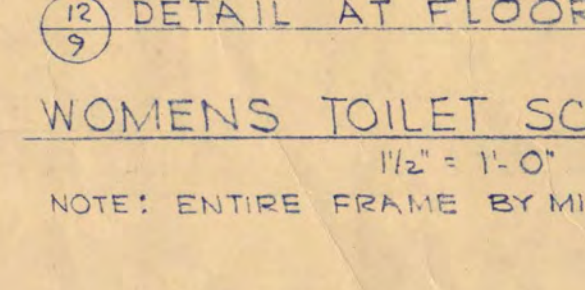
ACCESS DOOR DETAIL 1/2" = 1'-0"



10 DETAIL AT TOP



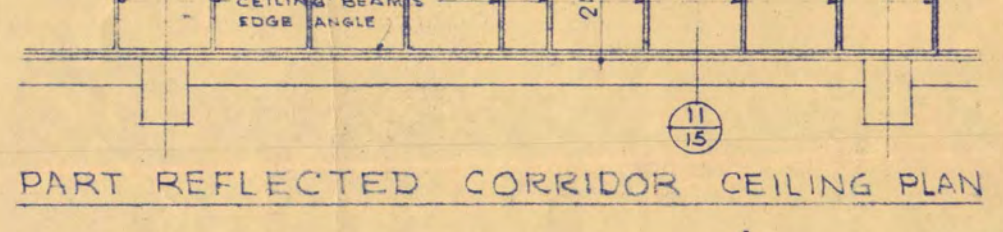
11 PLAN SECTION



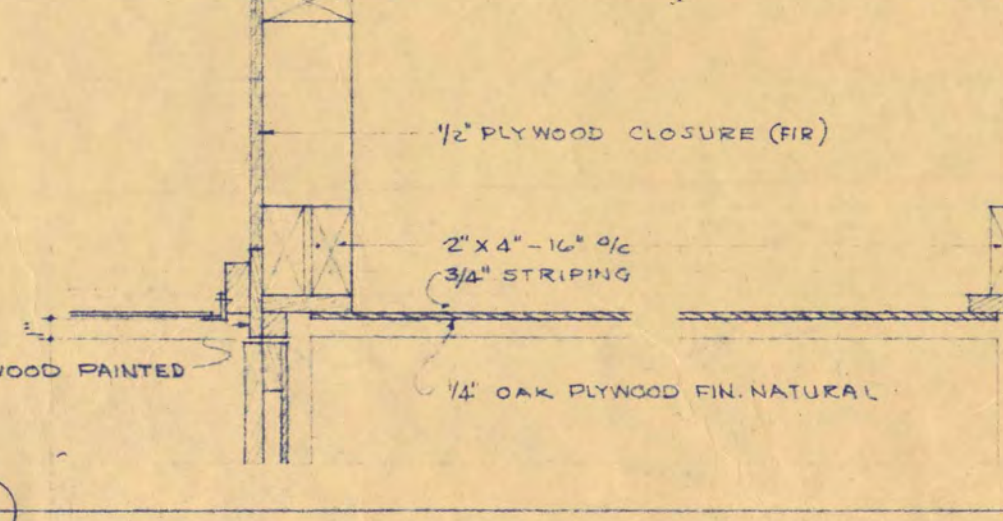
12 DETAIL AT FLOOR

WOMEN'S TOILET SCREEN DET. 1/2" = 1'-0"

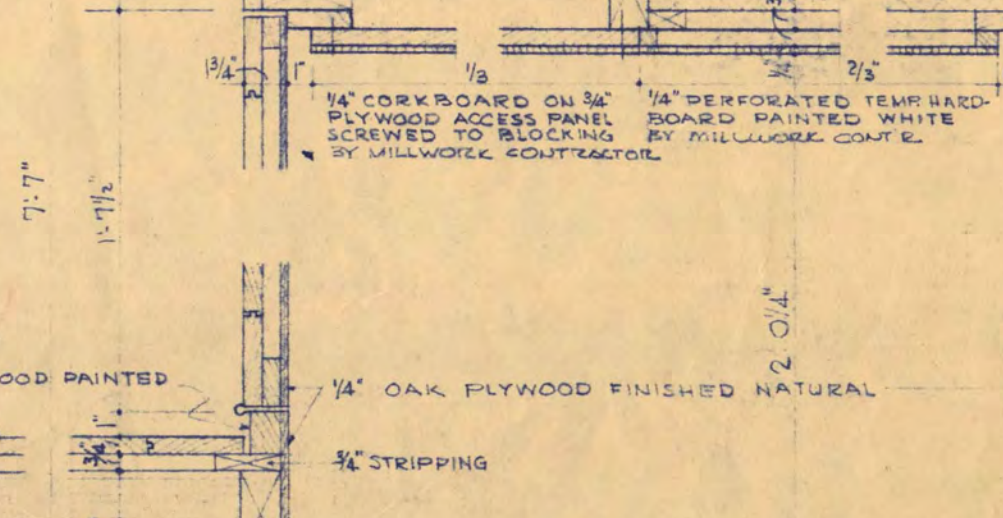
NOTE: ENTIRE FRAME BY MISC. MET. CONTR.



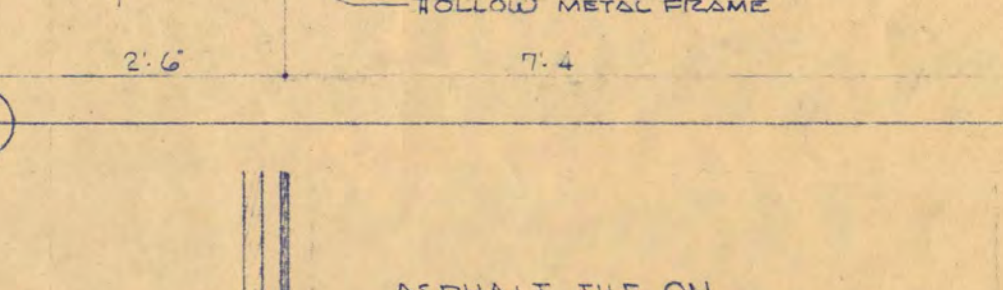
PART REFLECTED CORRIDOR CEILING PLAN



13 DETAIL AT TOP

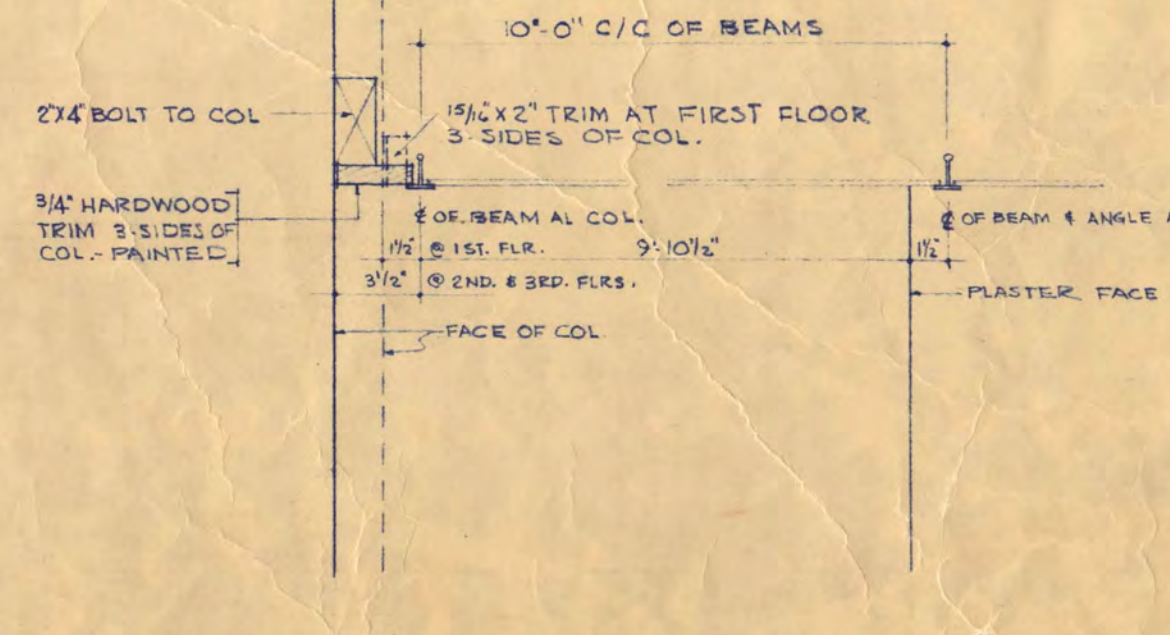


14 PLAN SECTION

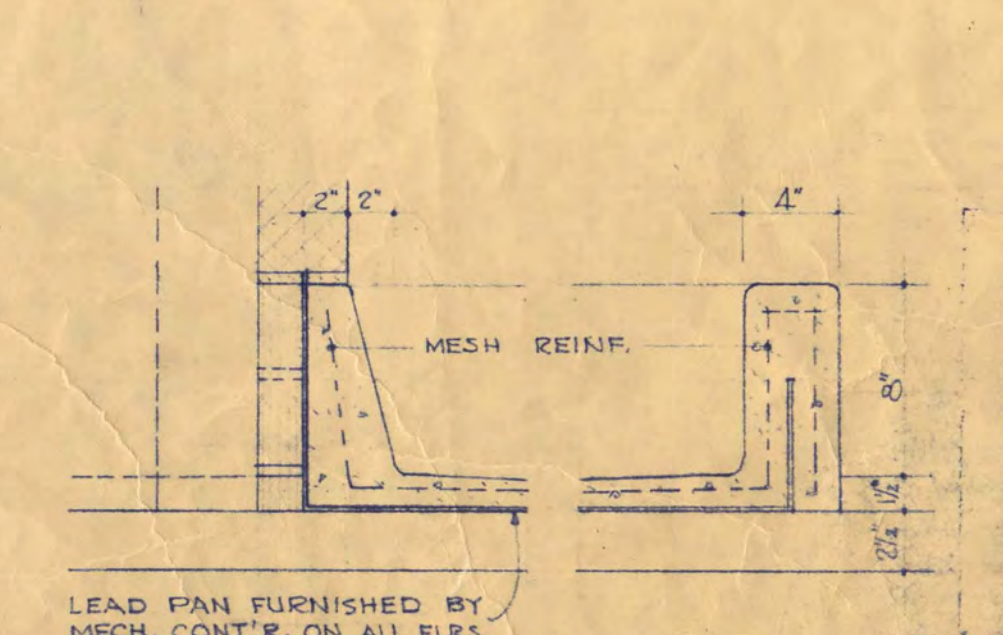


15 DETAIL AT FLOOR

DISPLAY CASE & WOOD OFFICE WALL DETAILS 1/2" = 1'-0"



22 GENERAL OFFICE CEILING DETAILS 1/2" = 1'-0"



23 JANITOR'S CLOSET FLOOR RECEPTOR 1/2" = 1'-0"

SCIENCE AND MATHEMATICS BUILDING
ST. CLOUD STATE COLLEGE
ST. CLOUD, MINNESOTA

DEPARTMENT OF ADMINISTRATION STATE OF MINNESOTA
ROOM 120 STATE CAPITOL BUILDING ST. PAUL, MINN.
ARCHITECTURAL AND ENGINEERING DIVISION

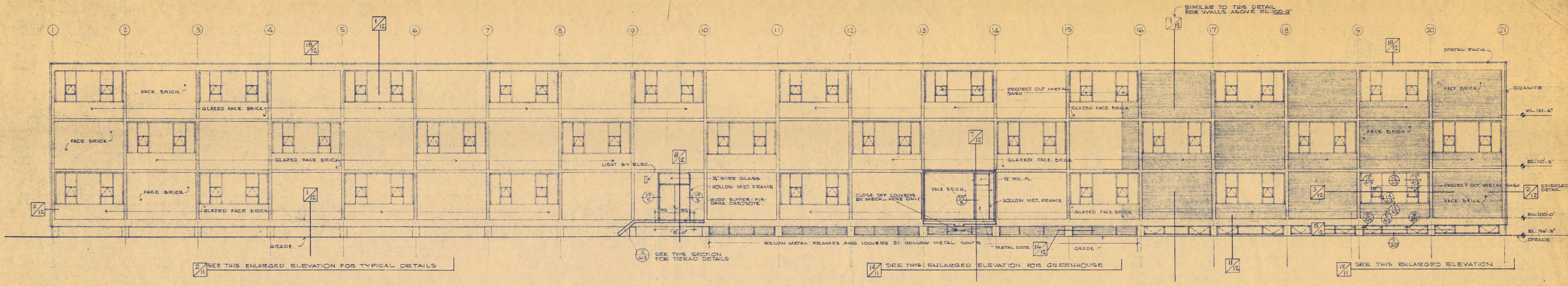
A.J. NELSON, STATE ARCHITECT

TRAYNOR AND HERMANSON, ARCHITECTS ST. CLOUD, MINN.
BAUMAN AND MOORE, INC. CONSULTING ENGINEERS ST. PAUL, MINN.
JOHNSTON SAHLMAN CO. STRUCTURAL ENGINEERS MINNEAPOLIS, MINN.

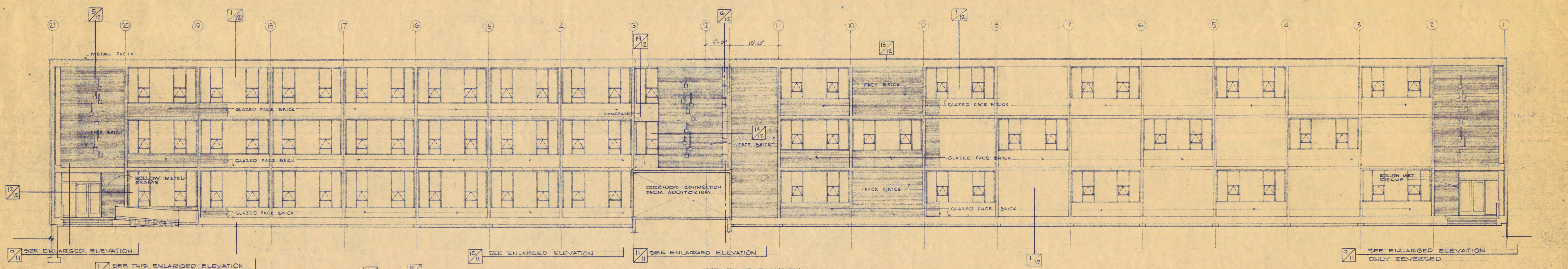
DATE: 7-13-58
REVISED: 7-13-58
DRAWN BY: L.S.V.
CHECKED BY: E.T.S.

APPROVED BY: PRESIDENT ST. CLOUD STATE COLLEGE
APPROVED BY: STATE COLLEGE BOARD
APPROVED BY: COMMISSIONER OF ADMINISTRATION
AN AUTHORIZED SIGNATURE

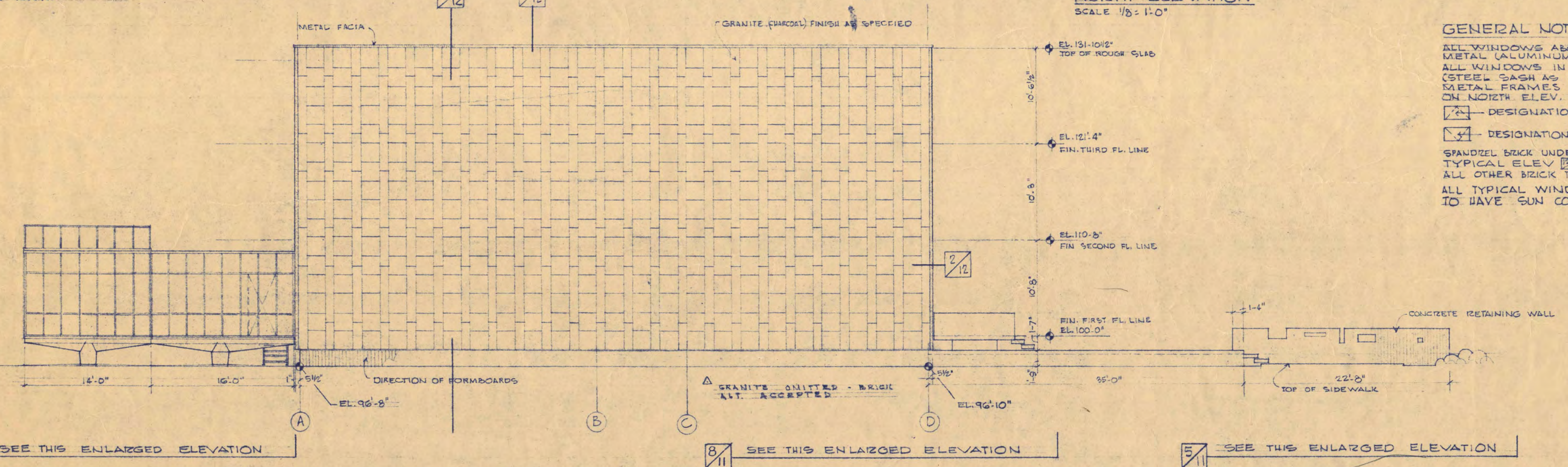
SHEET NO. 11 OF 11
PROJECT NUMBER



SOUTH ELEVATION
SCALE 1/8" = 1'-0"

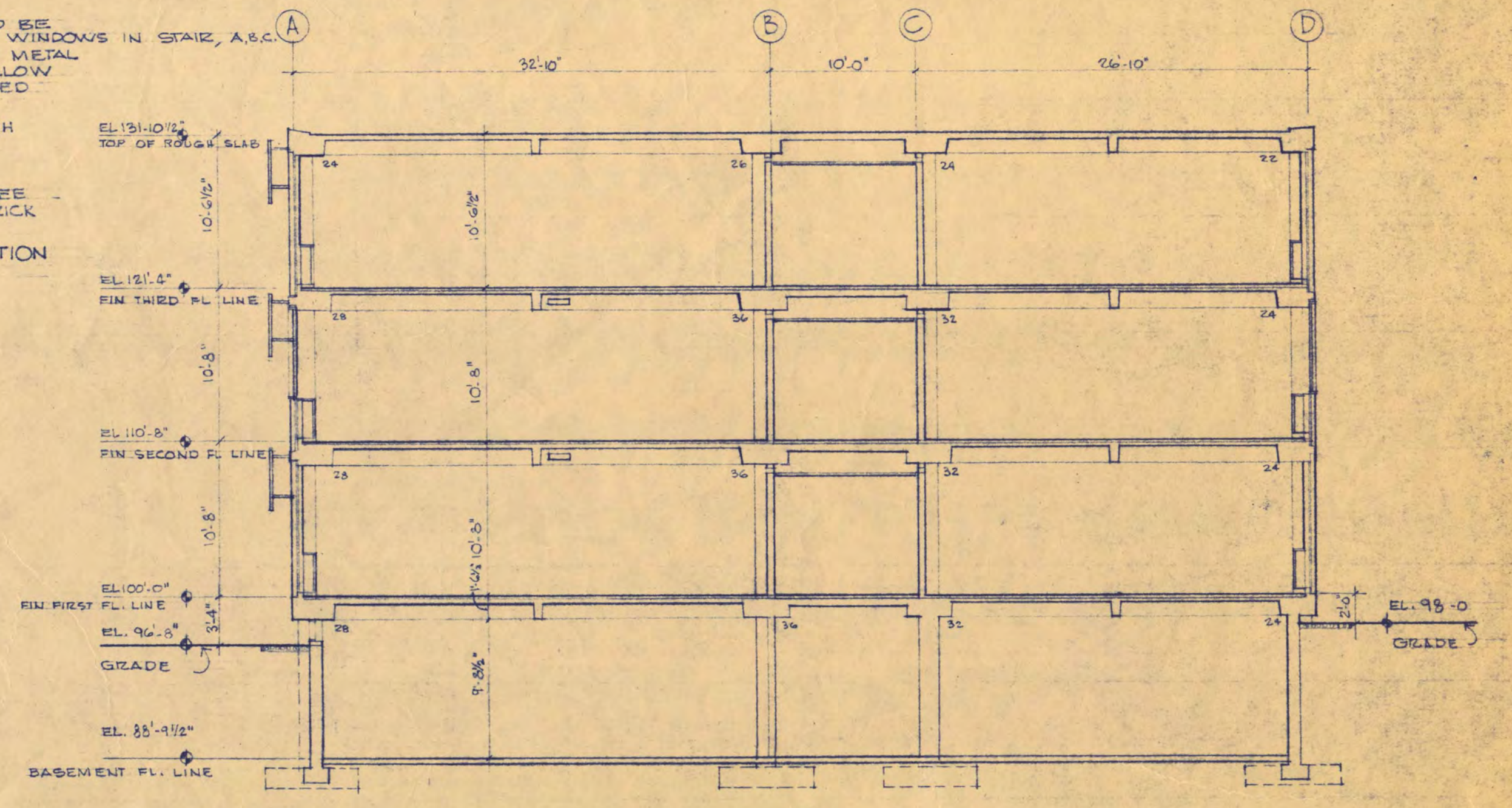


NORTH ELEVATION
SCALE 1/8" = 1'-0"

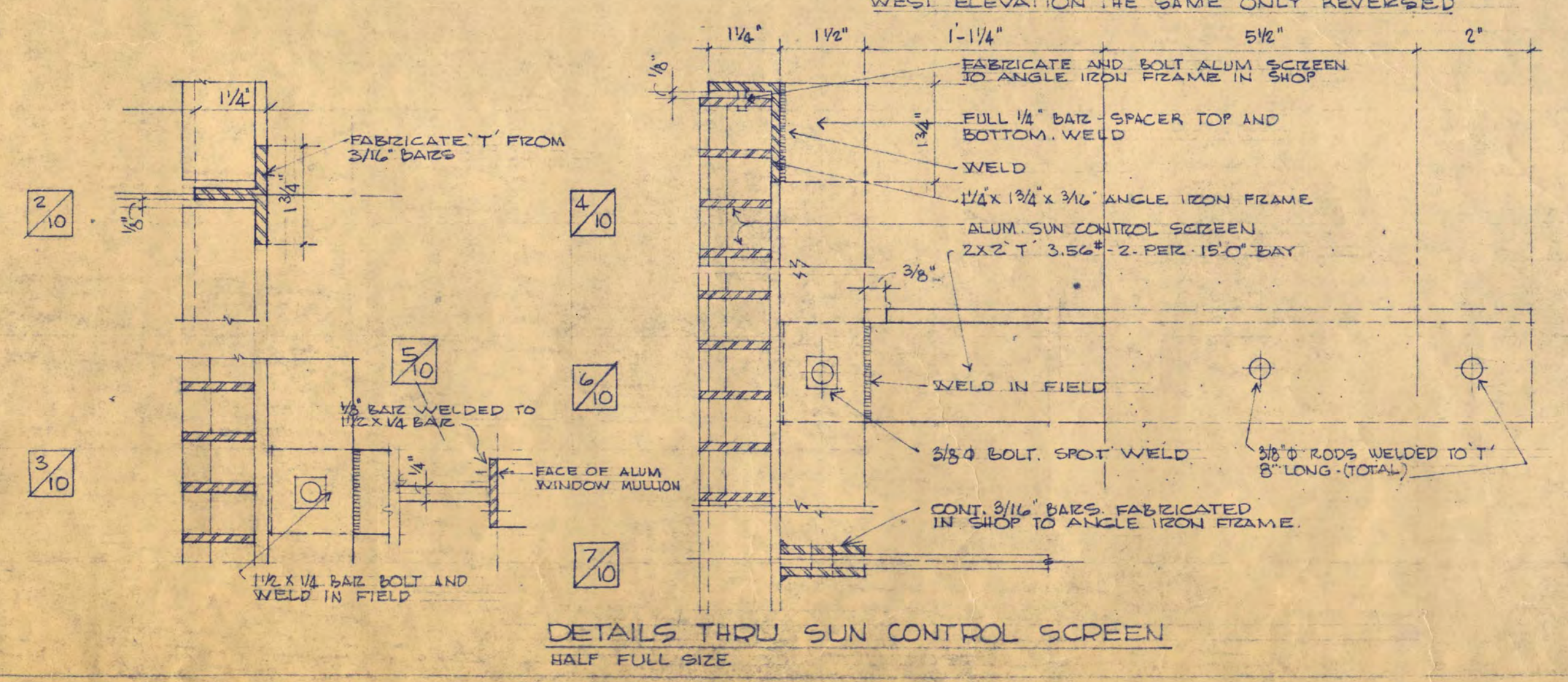


EAST ELEVATION
SCALE 1/8" = 1'-0"

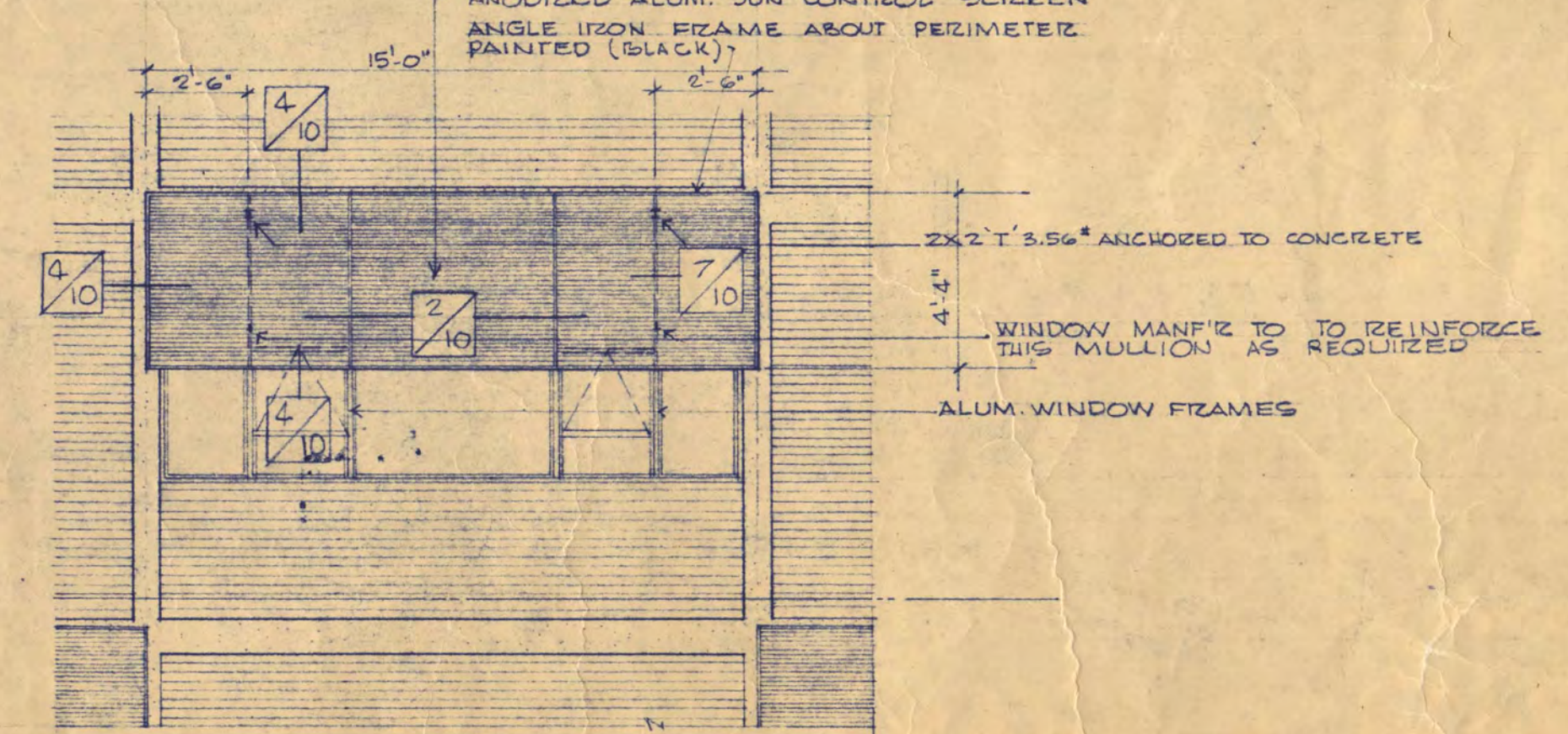
GENERAL NOTES
 ALL WINDOWS ABOVE ELEV. 100.0' ARE TO BE METAL (ALUMINUM AS SPECIFIED), EXCEPT WINDOWS IN STAIR, A.S.C.
 ALL WINDOWS IN BASEMENT ARE TO BE METAL (STEEL SASH AS SPECIFIED), EXCEPT HOLLOW METAL FRAMES AND LOUVERS, AS NOTED ON NORTH ELEV. ON THIS SHEET.
 [Symbol] - DESIGNATION FOR PROJECT OUT SASH
 [Symbol] - DESIGNATION FOR PROJECT IN SASH
 SPANDREL BRICK UNDER ALUMINUM WINDOWS, SEE TYPICAL ELEV. 111 TO BE GLAZED FACE BRICK. ALL OTHER BRICK TO BE FACE BRICK.
 ALL TYPICAL WINDOWS AT SOUTH ELEVATION TO HAVE SUN CONTROL SCREEN.



CROSS SECTION
SCALE 1/8" = 1'-0"



DETAILS THRU SUN CONTROL SCREEN
HALF FULL SIZE



TYPICAL ELEVATION OF SUN CONTROL SCREEN
SCALE 1/4" = 1'-0"
AS REQUIRED FOR SOUTH ELEVATION WINDOWS

SCIENCE AND MATHEMATICS BUILDING ST. CLOUD, MINNESOTA			
DEPARTMENT OF ADMINISTRATION ROOM 124 STATE CAPITOL BUILDING ST. PAUL, MINNESOTA		STATE OF MINNESOTA	
A.J. NELSON, STATE ARCHITECT			
FRAYTOR AND BERGMANSON, ARCHITECTS GARDNER AND MOORE, INC. CONSULTING ENGINEERS JOHNSTON, BARKER & CO. STRUCTURAL ENGINEERS		ST. CLOUD, MINN. ST. PAUL, MINN. MINNEAPOLIS, MINN.	
DATE	APPROVED BY	DATE	SHEET NO.
REVISED	APPROVED BY PRESIDENT ST. CLOUD STATE COLLEGE	10/10/30	10
DRAWN BY	APPROVED BY STATE COLLEGE BOARD	TEAS	OF STATE PROJECT NUMBER
CHECKED BY	APPROVED BY COMMISSIONER OF ADMINISTRATION IN AUTHORIZED SIGNATURE		