

PART 1ST. FLOOR PLAN - CENTERSECTION BETW WINGS
SPACE NUMBERS 135, 136, 137, 138, 139, 140, 141, 142, 143, 144 & 145

SCALE MAIN PLAN IN 1/4" = 1'-0"
ELEVATIONS IN 3/8" = 1'-0"
SECTIONS IN 1/2" = 1'-0" (EXCEPT DETAILS 20-21 IN 1/2" SIZE)

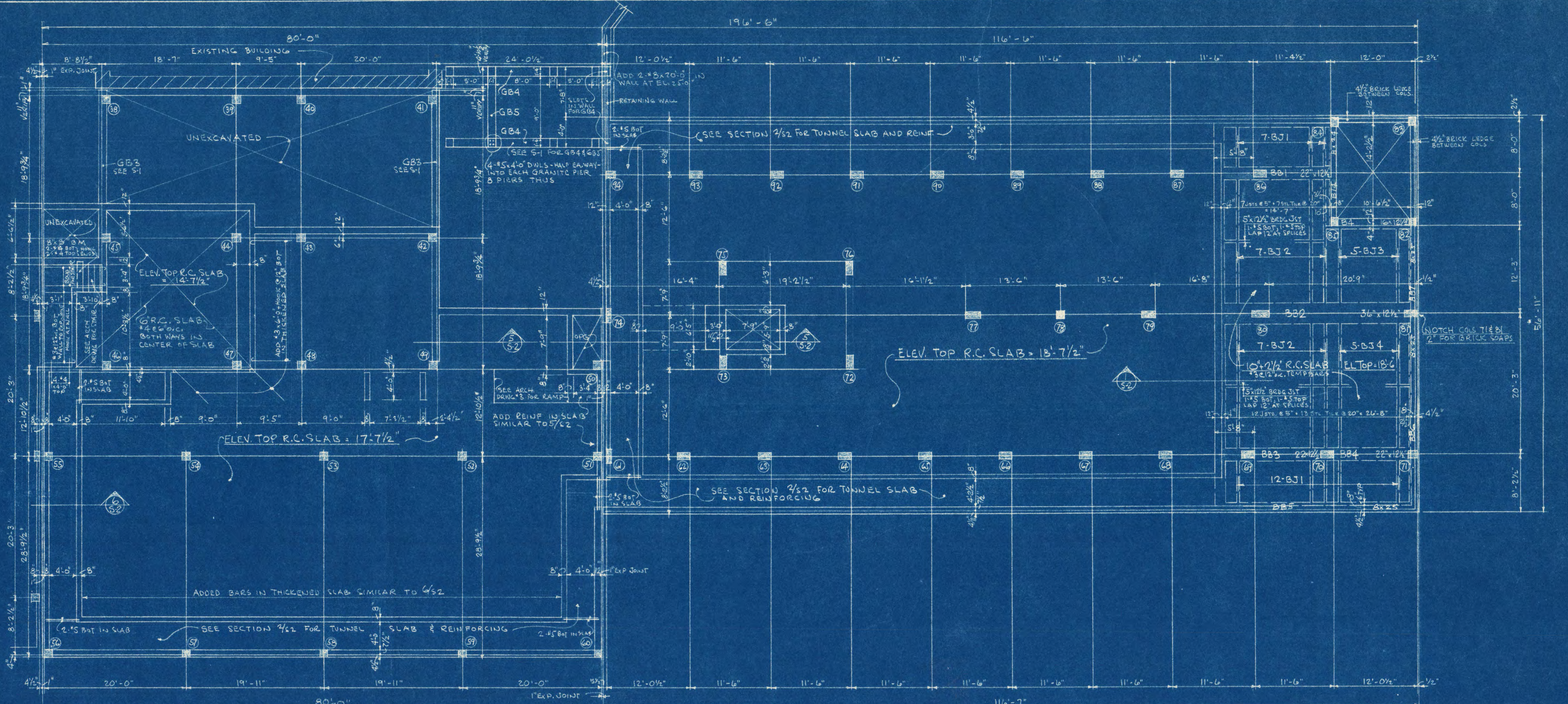
FULL SIZE OF OAK WOOD
MOLDING AT HOL. MET.
DOOR FRAME'S.

ADDITION TO SHOEMAKER HALL ST. CLOUD STATE COLLEGE ST. CLOUD, MINNESOTA	
DRAWN BY 10-11-51	SHEET NO. 16
DATE 5-2-51	ST. CLOUD
APPROVED BY <i>[Signature]</i>	ST. CLOUD
APPROVED BY	ST. CLOUD

BASEMENT AND FIRST FLOOR CONCRETE BEAM SCHEDULE											
BEAM MARK	NO THUS	BEAM SIZE	STR. BOT. BARS	TOP BARS	STRUTS OR TIES	REMARKS					
B51	1	22	12/4	4 #7	4 #3	EXTEND BOT BARS TO TOP 12" WALL W. OF COL. B6					
B52	1	22	12/4	4 #7	4 #3	EXTEND BOT BARS TO TOP 12" WALL W. OF COL. B6					
B53	1	22	12/4	4 #7	4 #3	EXTEND BOT BARS TO TOP 12" WALL W. OF COL. B7					
B54	1	22	12/4	4 #7	4 #3	EXTEND BOT BARS TO TOP 12" WALL W. OF COL. B7					
B55	1	8	2/5	2 #3	2 #3	HOOK TOP BARS AT B6 & EXTEND 4'-0" INTO WALL AT N. END					
B56	1	8	2/5	2 #3	2 #3	EXTEND BOTTOM BARS FROM COL. B1 TO B55					
B57	1	8	2/5	2 #3	2 #3	LAP TOP BARS 12" AT 1/2 PT. IF B6 & EXTEND 5' NORTH OF COL. B2					
B1	1	30	12/4	4 #7	4 #3	4" x 10" HOOK AT COL. B1					
B2	1	30	12/4	4 #7	4 #3	4" x 10" HOOK AT COL. B1					
B3	2	12	1/6	2 #3	2 #3	HOOK TOP BARS AT EXT. COLS. & EXTEND TO 1/4 PT. OF RM.					
B4	1	12	1/6	2 #3	2 #3	HOOK TOP BARS AT EXT. COLS. & EXTEND TO 1/4 PT. OF RM.					
B5	1	20	12/4	4 #7	4 #3	EXTEND 2 BOT BARS TO EDGE OF SILL					
B6	1	20	12/4	4 #7	4 #3	SPlice 1 BOTTOM BAR 12" AT COLS. 4T & B, PLACE SPICES 6" NORTH OF COLUMNS					
B7	1	20	12/4	4 #7	4 #3	EXTEND 2 TOP BARS AT COLS. 4T FROM 1/2 PT. (BOT TO RT 1/2) 1/2 PT. (BOT TO RT 1/2)					
B8	1	12	3/8	3 #3	3 #3	PLACE BARS 3/4" ON TOP & BOTTOM, HOOK BOTH ENDS OF BOT. BARS					
B10A	2	8	1/2	1 #3	1 #3	LAP 4 BOT BARS 12" AT COLS. - 2 BARS EACH SIDE OF COL.					
B10	2	8	1/2	1 #3	1 #3	LAP 4 BOT BARS 12" AT COLS. - 2 BARS EACH SIDE OF COL.					
B12	2	8	1/2	1 #3	1 #3	LAP 4 BOT BARS 12" AT COLS. - 2 BARS EACH SIDE OF COL.					
B13	4	30	12/4	4 #7	4 #3	ADD 5 #7 TOP BARS AT STR. B6, EXTEND 3/4 PT. & 2 #7 BOTTOM BARS					

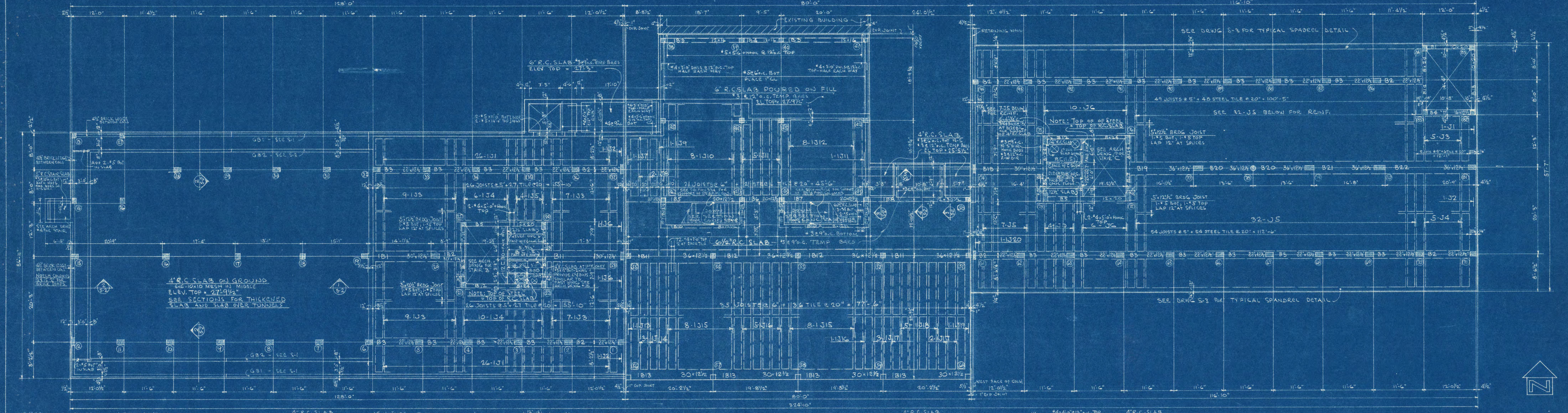
SEE DRWG S-3 FOR BEAM AND JOIST SCHEDULE NOTES

BASEMENT AND FIRST FLOOR CONCRETE JOIST SCHEDULE											
JOIST MARK	NO THUS	JOIST SIZE	STR. BOT. BARS	TOP BARS	REMARKS						
B71	19	5	12/2	2 #3	4" x 10" HOOK AT OUTSIDE WALL						
B72	14	5	12/2	2 #3	4" x 10" HOOK AT OUTSIDE WALL						
B73	5	5	12/2	2 #3	4" x 10" HOOK AT OUTSIDE WALL						
B74	5	5	12/2	2 #3	4" x 10" HOOK AT OUTSIDE WALL						
J31	52	5	12/2	2 #3	TOP BARS FROM J3, J4, J5						
J32	2	22	2	2 #3	4" x 10" HOOK AT OUTSIDE WALL						
J33	2	22	2	2 #3	4" x 10" HOOK AT OUTSIDE WALL						
J34	16	5	12/2	2 #3	4" x 10" HOOK AT OUTSIDE WALL						
J35	4	5	12/2	2 #3	4" x 10" HOOK AT OUTSIDE WALL						
J36	2	22	2	2 #3	4" x 10" HOOK AT OUTSIDE WALL						
J37	1	14	3	3 #3	4" x 10" HOOK AT N. END						
J38	2	6	2	2 #3	4" x 10" HOOK AT N. END						
J39	1	16	4	4 #3	4" x 10" HOOK AT N. END						
J40	8	6	2	2 #3	4" x 10" HOOK AT N. END						
J41	6	6	2	2 #3	4" x 10" HOOK AT N. END						
J42	8	6	2	2 #3	4" x 10" HOOK AT N. END						
J43	1	14	4	4 #3	4" x 10" HOOK AT N. END						
J44	3	6	2	2 #3	4" x 10" HOOK AT N. END						
J45	16	6	2	2 #3	4" x 10" HOOK AT N. END						
J46	6	6	2	2 #3	4" x 10" HOOK AT N. END						
J47	5	6	2	2 #3	4" x 10" HOOK AT N. END						
J48	5	6	2	2 #3	4" x 10" HOOK AT N. END						
J49	1	14	4	4 #3	4" x 10" HOOK AT N. END						
J50	1	14	4	4 #3	4" x 10" HOOK AT N. END						



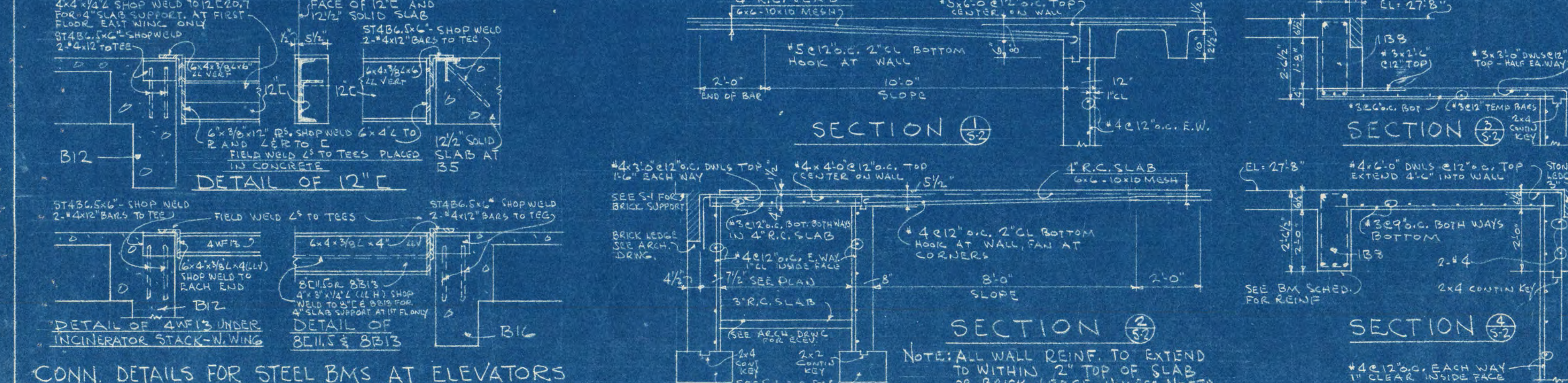
BASEMENT FLOOR FRAMING PLAN

4" R.C. SLAB ON GROUND UNLESS NOTED ON PLAN
 4" x 10" MESH IN MIDDLE OF SLAB
 SEE PLAN & SECTIONS FOR THICKENED SLAB AND ADDED REINFORCING
 ELEV. TOP OF R.C. SLAB SHOWN ON PLAN

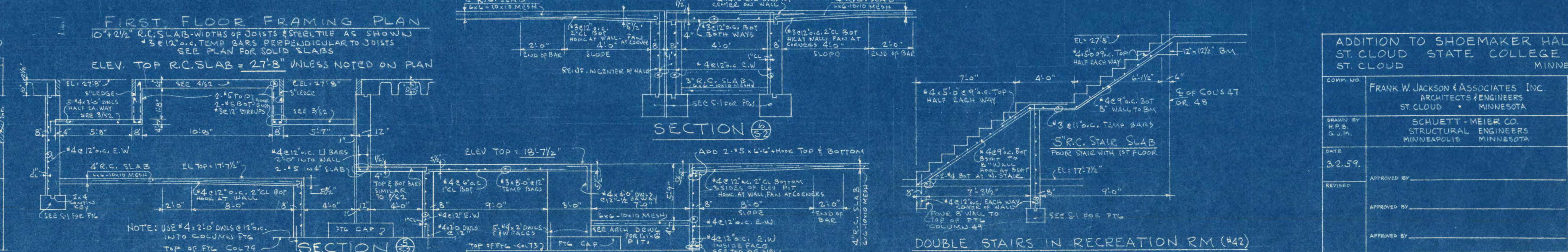


FIRST FLOOR FRAMING PLAN

4" R.C. SLAB WIDTHS OF JOISTS ESTABLISHED AS SHOWN
 4" x 10" MESH PERPENDICULAR TO JOISTS
 SEE PLAN FOR SLAB SLABS
 ELEV. TOP OF R.C. SLAB = 27'-9 1/2" UNLESS NOTED ON PLAN



CONN. DETAILS FOR STEEL BMS AT ELEVATORS



ADDITION TO SHOEMAKER HALL
 ST. CLOUD STATE COLLEGE
 ST. CLOUD, MINNESOTA

FRANK W. JACKSON & ASSOCIATES, INC.
 ARCHITECTS & ENGINEERS
 ST. CLOUD, MINNESOTA

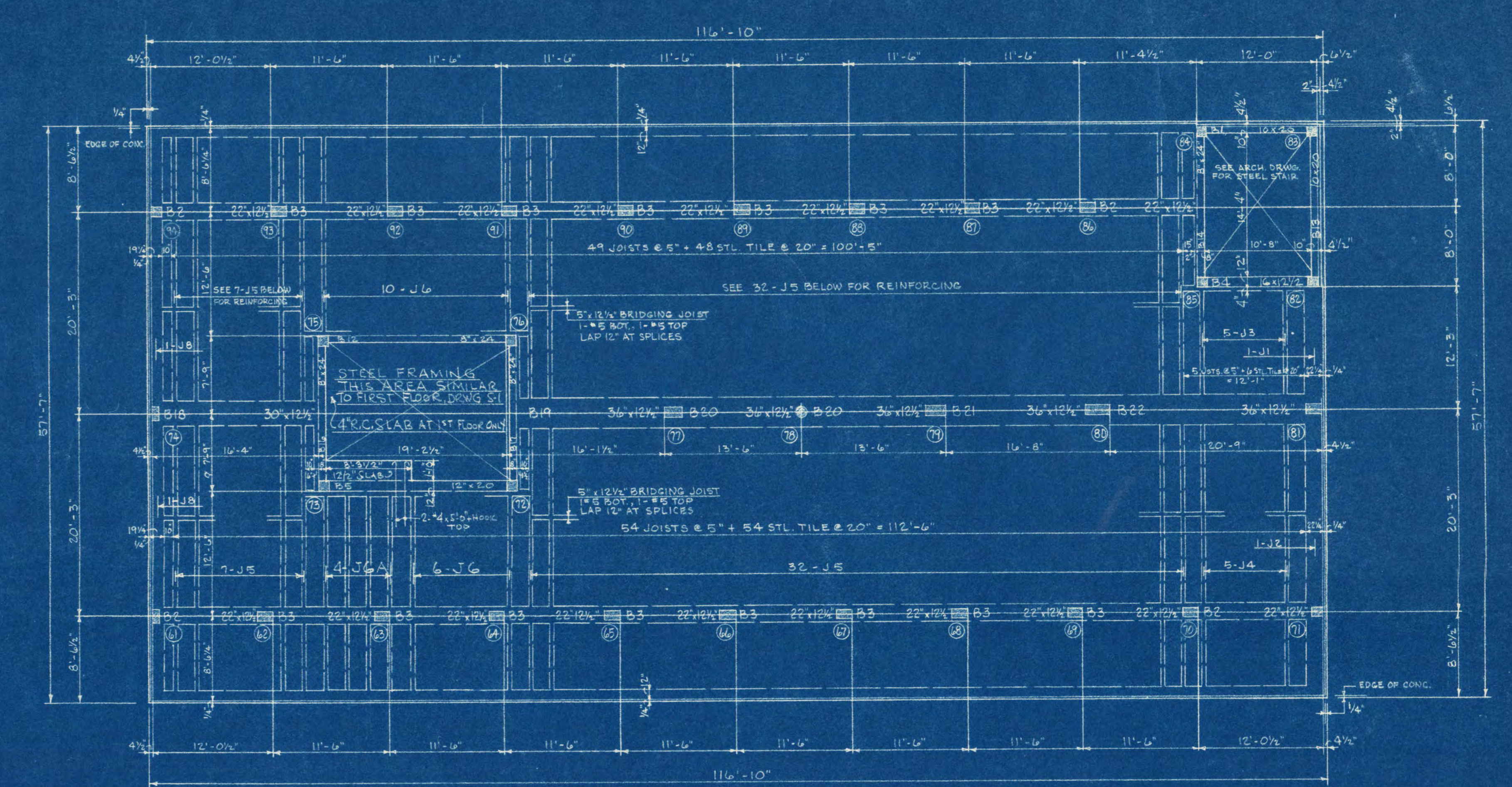
SCHUETT-MEIER CO.
 STRUCTURAL ENGINEERS
 MINNEAPOLIS, MINNESOTA

DATE: 3.2.59.

PROJECT NO: ST. CLOUD B-1-B

SHEET NO: 52 OF 4

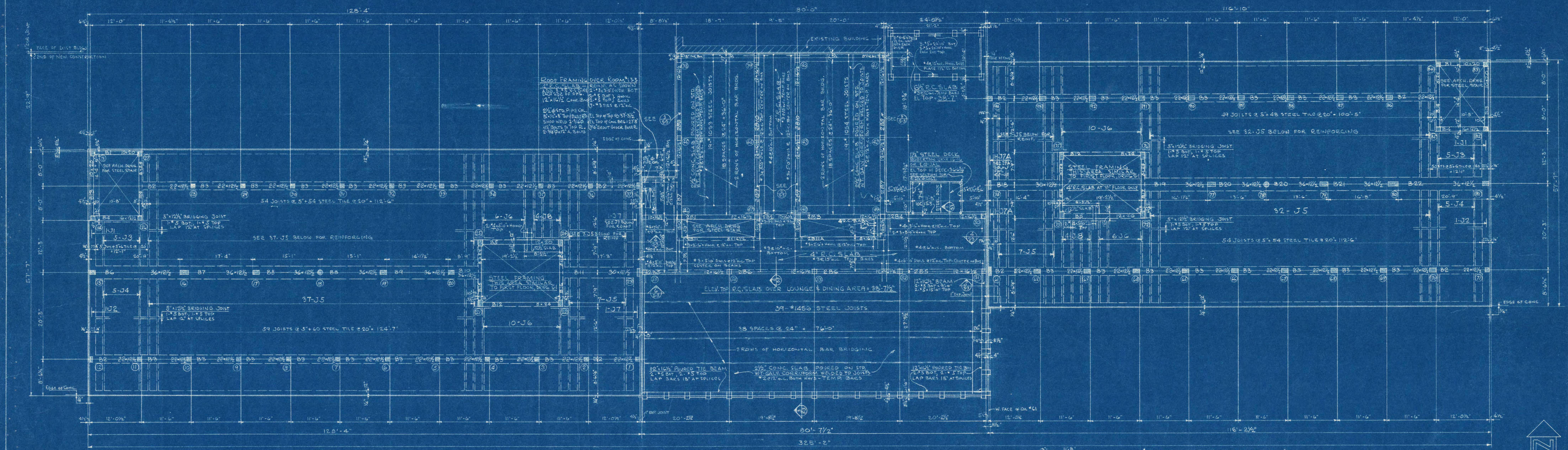
TYPICAL FLOOR - CONCRETE BEAM SCHEDULE										
BEAM MARK	NO. THUS	BEAM SIZE		STR. BOT BARS		TOP BARS		STIRRUPS OR TIES		REMARKS
		W"	D"	NO.	SIZE	NO.	SIZE	NO.	SIZE	
B1	8	10	20	2	#6	2	#6	9	#3 @ 12" o.c.	
B2	34	22	12 1/2	4	#4	4	#4	6	#3 @ 12" o.c.	
B3	134	22	12 1/2	4	#4	4	#4	6	#3 @ 12" o.c.	LAP 2 BOTTOM BARS 12" AT COLUMNS - EACH SIDE OF COL.
B4	9	16	12 1/2	4	#4	2	#6	7	#3 @ 12" o.c.	
B5	9	12	20	2	#6	2	#6	7	#3 @ 12" o.c.	
B6	3	36	12 1/2	5	#4	5	#4	14	#3 @ 12" o.c.	
B7	3	36	12 1/2	5	#4	5	#4	14	#3 @ 12" o.c.	
B8	6	36	12 1/2	5	#4	5	#4	14	#3 @ 12" o.c.	
B9	3	36	12 1/2	5	#4	5	#4	14	#3 @ 12" o.c.	
B10	3	36	12 1/2	5	#4	5	#4	14	#3 @ 12" o.c.	
B11	4	30	12 1/2	6	#4	4	#4	8	#3 @ 12" o.c.	
B12	9	8	24	2	#10	2	#8	17	#3 @ 12" o.c.	
B13	8	10	20	2	#6	2	#6	9	#3 @ 12" o.c.	
B14	4	8	24	2	#10	2	#8	14	#3 @ 12" o.c.	ADD 2 #9 TOP AT 1/4 & 3/4 FROM 1/4 PT. OF J1 TO 1/2 PT. OF BM + 1/2 LAP.
B15	4	8	24	2	#10	2	#8	14	#3 @ 12" o.c.	PLACE TOP BARS UNDER TOP BARS FROM B2
B16	4	8	24	2	#10	2	#8	14	#3 @ 12" o.c.	PLACE TOP BARS UNDER TOP BARS FROM B10 (NORTH) & B16 (SOUTH), BOTTOM BARS IN 2 LAYERS. NOTE: PAD BM FOR WELF SUPPORT AT CHUTES, SEE ARCH DRAW.
B17	5	8	24	2	#10	2	#8	13	#3 @ 12" o.c.	PLACE TOP BARS UNDER TOP BARS FROM B19.
B18	5	30	12 1/2	5	#4	4	#4	17	#3 @ 12" o.c.	
B19	5	36	12 1/2	5	#4	5	#4	14	#3 @ 12" o.c.	
B20	10	36	12 1/2	5	#4	5	#4	14	#3 @ 12" o.c.	
B21	5	36	12 1/2	5	#4	5	#4	14	#3 @ 12" o.c.	
B22	5	36	12 1/2	5	#4	5	#4	14	#3 @ 12" o.c.	
B23	1	12	16 1/2	2	#6	2	#6	8	#3 @ 12" o.c.	EXTEND BOTTOM BARS FROM E OF COL 47 TO EDGE OF CANTILEVER (NEXT TO WEST WING)
B24	1	12	16 1/2	2	#6	2	#6	8	#3 @ 12" o.c.	
B25	2	12	16 1/2	3	#8	2	#8	10	#3 @ 12" o.c.	ADD 2 #8 TOP AT COL 51 & 53. Hook TOP BARS AT COLS & LAP 12" WITH 21" BARS AT COLS 52 & 54.
B26	2	12	16 1/2	1	#6	1	#6	4	#3 @ 12" o.c.	
B27	2	12	16 1/2	1	#6	1	#6	4	#3 @ 12" o.c.	EXTEND BOTTOM BARS FROM E COLS 42 & 45 TO E OF 2B11 & 2B14
B28	2	12	16 1/2	1	#6	1	#6	4	#3 @ 12" o.c.	ADD 2 #7 TOP AT COL 35 & 41. Hook TOP BARS AT COLS & LAP 12" AT 1/2 PT. OF BM.
B29	2	12	16 1/2	1	#6	1	#6	4	#3 @ 12" o.c.	EXTEND BOTTOM BARS FROM E COLS 43 & 44 TO E OF 2B11 & 2B14
B30	2	12	16 1/2	1	#6	1	#6	4	#3 @ 12" o.c.	ADD 2 #8 TOP AT COL 39 & 40. Hook TOP BARS AT COLS & LAP 12" AT 1/2 PT. OF BM.
B31, 2 B1A	2	8	16 1/2	2	#9	2	#7	11	#3 @ 12" o.c.	ADD 2 #7 X 3/4" TOP - LAP 12" WITH TOP BARS AT 2B7



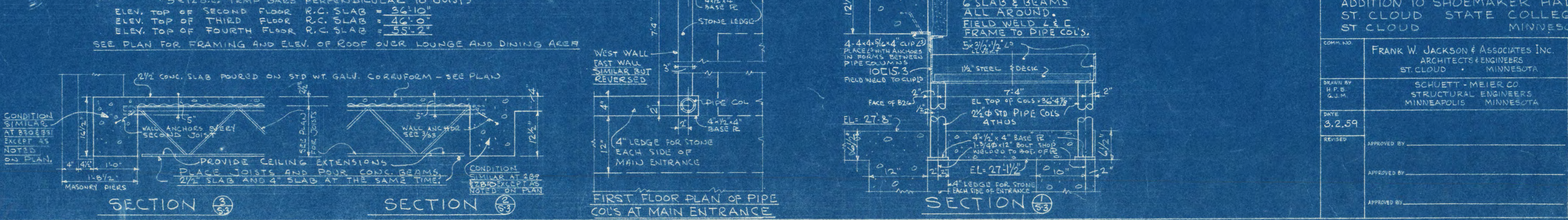
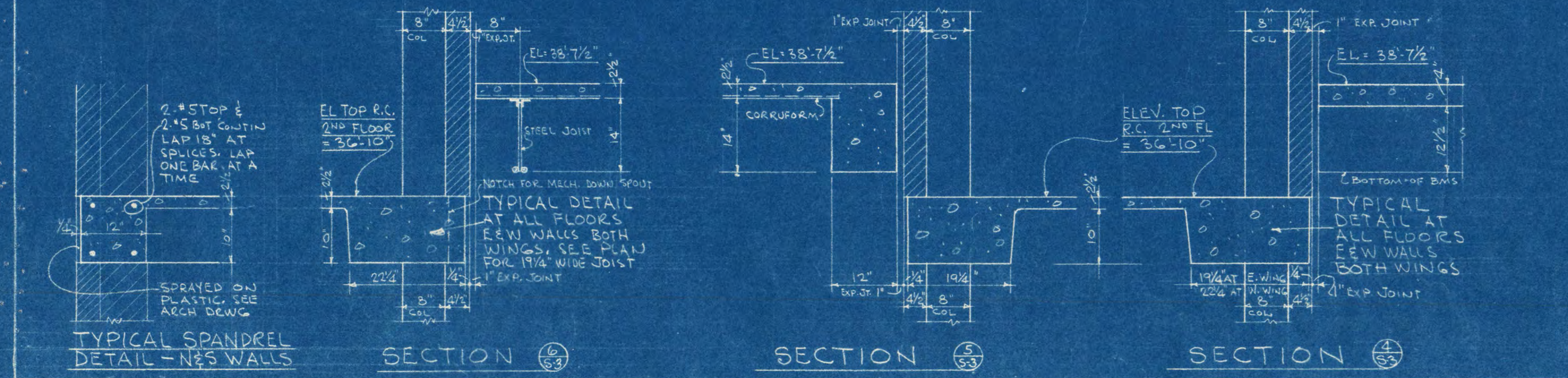
FIFTH FLOOR FRAMING PLAN
 10" R.C. SLAB - 5" RIBS AND 2" REMOVABLE STEEL TIE UNLESS NOTED
 3" R.C. TEMP BARS PERPENDICULAR TO JOISTS
 ELEV. TOP R.C. SLAB = 64' 4"

TYPICAL FLOOR - CONCRETE JOIST SCHEDULE									
JOIST MARK	NO. THUS	JOIST SIZE		STR. BOT BARS		TOP BARS		REMARKS	
		W"	D"	NO.	SIZE	NO.	SIZE		
J1	8	22 1/4	12 1/2	2	#7	2	#7	NO. 0' CENTER ON COLS & COL B1	ADD #3 TIES @ 12" o.c.
J2	3	22 1/4	12 1/2	2	#7	2	#7	X 1/2" HOOK AT EAST & WEST ENDS	ADD #3 TIES @ 12" o.c.
J3	40	5	12 1/2	1	#6	1	#6	X 1/2" HOOK AT 84	
J4	40	5	12 1/2	1	#6	1	#6	X 1/2" HOOK AT 84	
J5	32	5	12 1/2	1	#6	1	#6	X 1/2" HOOK AT 84	
J6	12	5	12 1/2	1	#6	1	#6	X 1/2" HOOK AT 84	ADD 1 #3 X 4" 0" HOOK TOP AT B5 & B12
J7	4	5	12 1/2	1	#6	1	#6	X 1/2" HOOK AT 84	ADD #3 TIES @ 12" o.c. 40" L2 BOT BARS FROM COL 1 TO 37 AND COL 61 TO 94
J8	32	5	12 1/2	1	#6	1	#6	X 1/2" HOOK AT 84	ADD 1 #3 X 4" 0" HOOK TOP AT B5

BEAM AND JOIST SCHEDULE NOTES
 BOTTOM BARS EXTEND FROM CENTER TO CENTER OF SUPPORT UNLESS NOTED. SEE SCHEDULES FOR TOP BARS. PLACE LAPPED TOP & BOTTOM BARS AT ENDS OF BEAMS OR JOISTS.
 SUPPORT TOP JOIST BARS USING SCRAP REINFORCING BARS LAYING ON ADJACENT STEEL TIE OF PROPER DIAMETER TO KEEP TOP JOIST BARS 1/2" CLEAR TOP OF SLAB. USE 2 LINES OF SUPPORT EACH SIDE OF BEAMS. WIRE TOP BEAM BARS TO TOP JOIST BARS AND PLACE BOTTOM BEAM BARS ON TOP OF BOTTOM JOIST BARS. USE WIRE SUPPORT FOR ALL SLAB, JOIST & BEAM BOTTOM BARS, AND H-CHAIRS FOR TOP BARS IN SOLID SLABS. SEE DRWG 64 FOR TYPICAL DETAIL OF BAR SUPPORT FOR FLAT BMS.
 NOTE: COLUMN MARKED "NO THUS" IS FOR THE CONVENIENCE OF THE ESTIMATOR ONLY AND MUST BE VERIFIED WITH PLANS.



SECOND, THIRD AND FOURTH FLOORS FRAMING PLAN
 10" R.C. SLAB - 5" RIBS AND 2" REMOVABLE STEEL TIE UNLESS NOTED
 3" R.C. TEMP BARS PERPENDICULAR TO JOISTS
 ELEV. TOP OF SECOND FLOOR R.C. SLAB = 62' 10"
 ELEV. TOP OF THIRD FLOOR R.C. SLAB = 64' 0"
 ELEV. TOP OF FOURTH FLOOR R.C. SLAB = 65' 0"
 SEE PLAN FOR FRAMING AND ELEV. OF ROOF OVER LOUNGE AND DINING AREA



**ADDITION TO SHOEMAKER HALL
 ST. CLOUD STATE COLLEGE
 ST. CLOUD, MINNESOTA**

FRANK W. JACKSON & ASSOCIATES INC.
 ARCHITECTS-ENGINEERS
 ST. CLOUD, MINNESOTA

SCHUETT-MEIER CO.
 STRUCTURAL ENGINEERS
 MINNEAPOLIS, MINNESOTA

DATE: 3.2.59
 DRAWN BY: G.W.R.
 CHECKED BY: J.S.
 APPROVED BY: J.S.

SH. 53
 OF 3
 ST. CLOUD
 B-1B

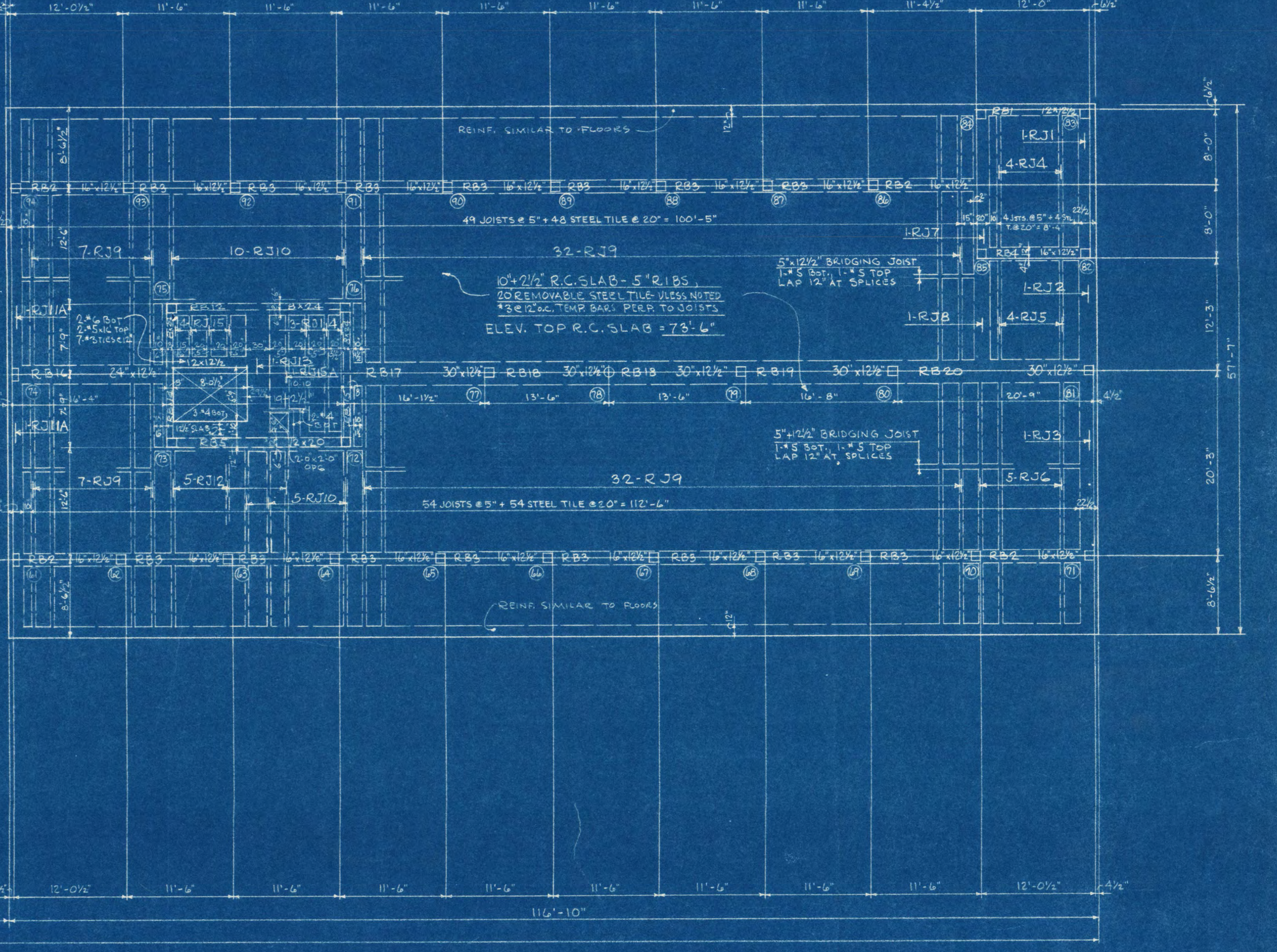
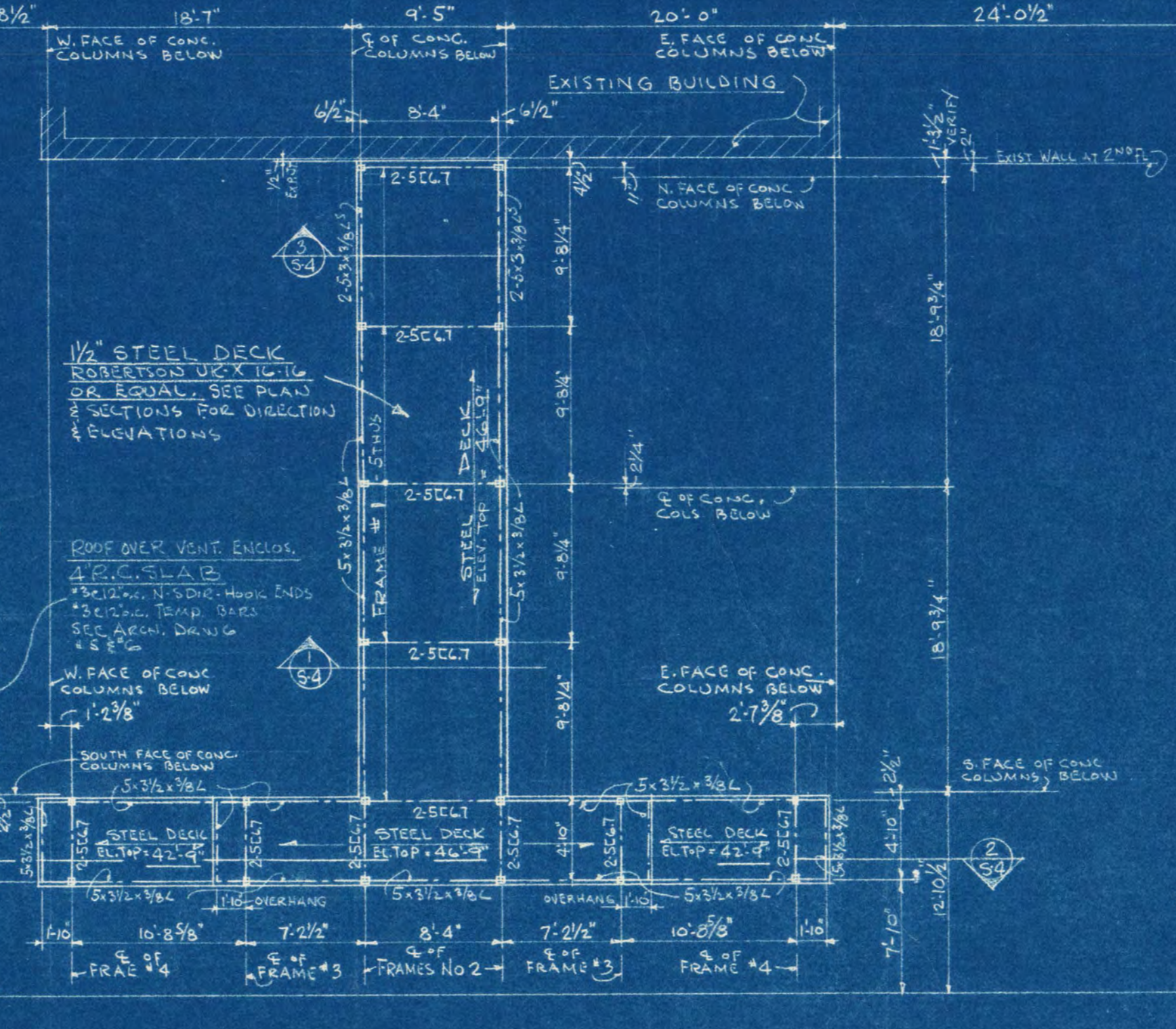
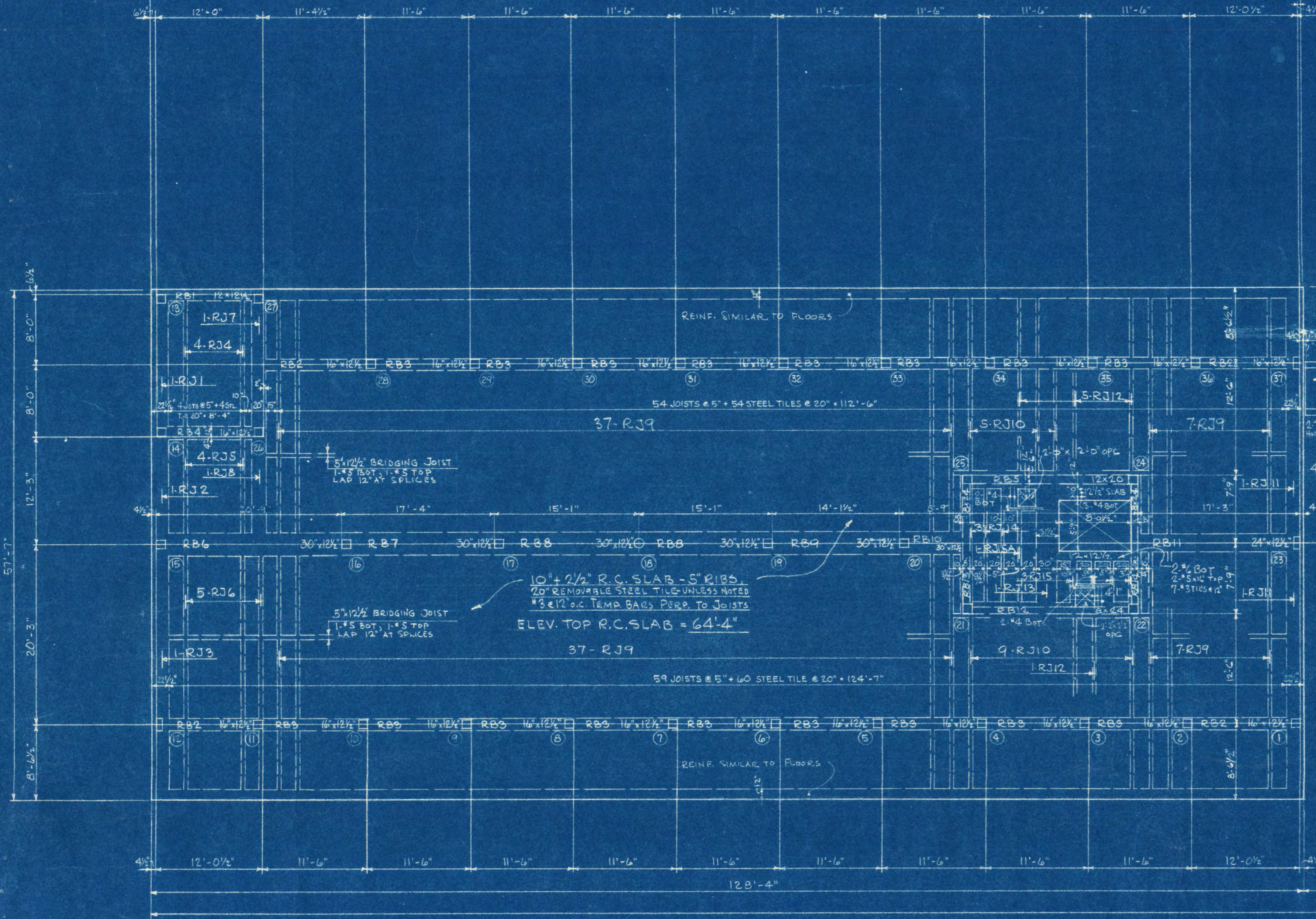
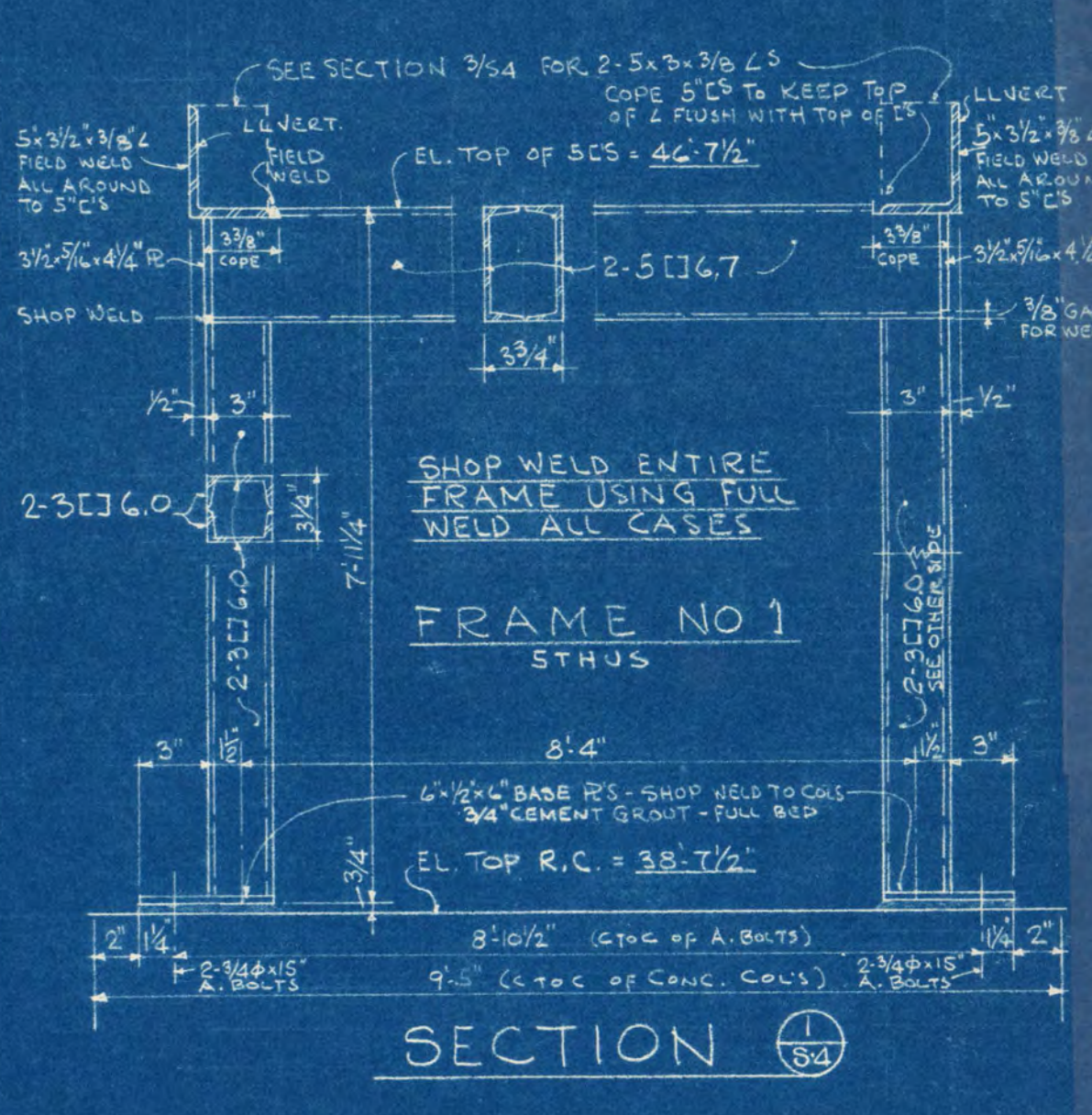
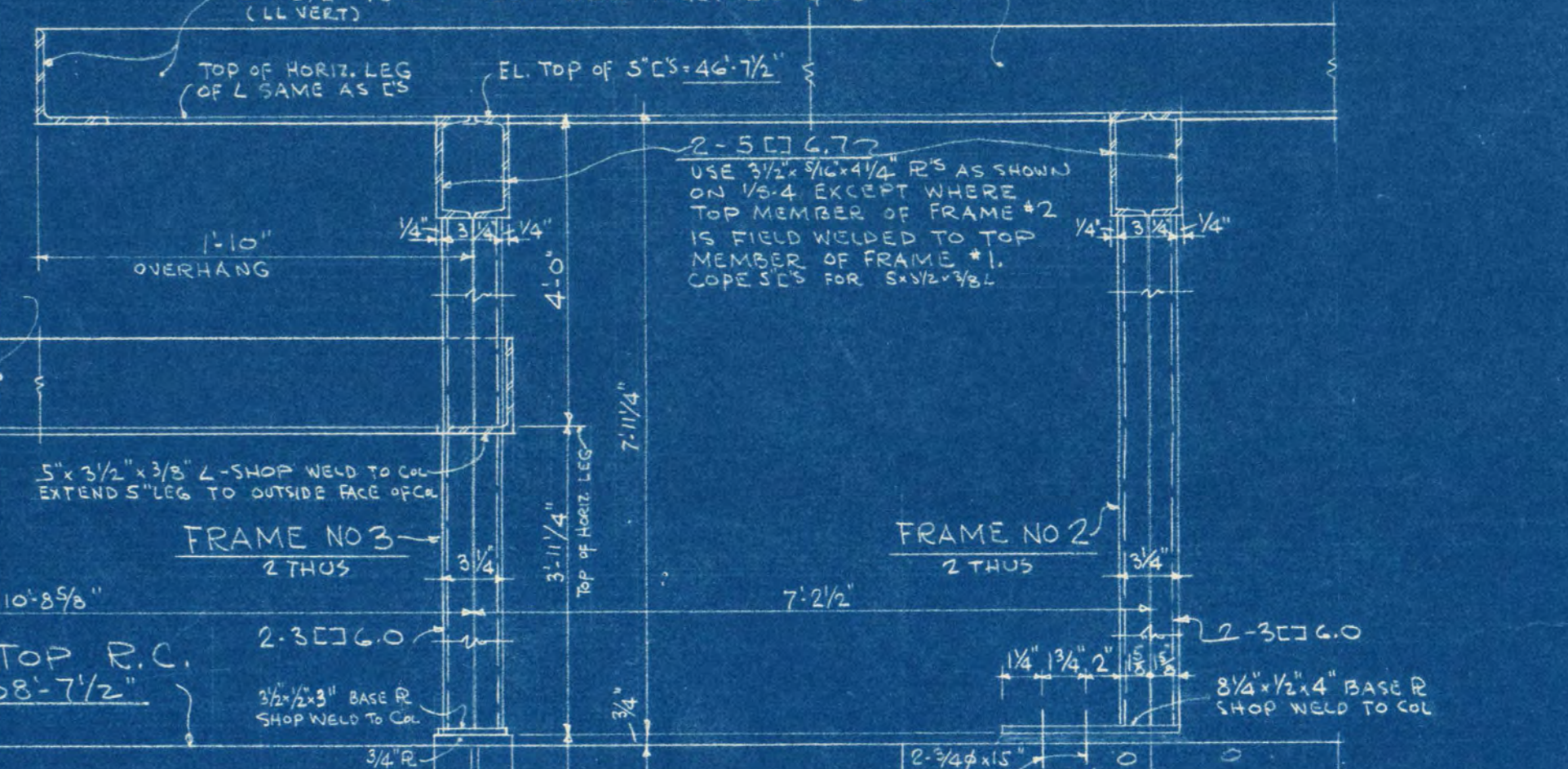
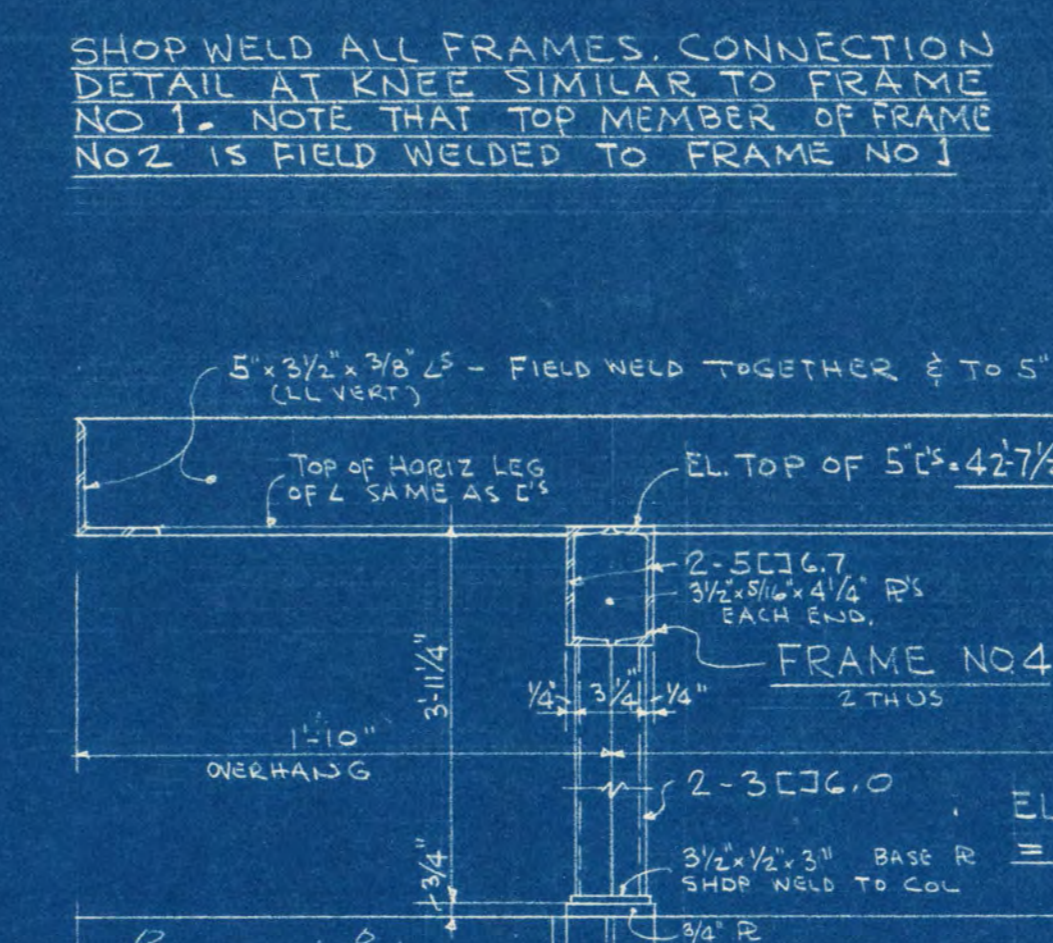
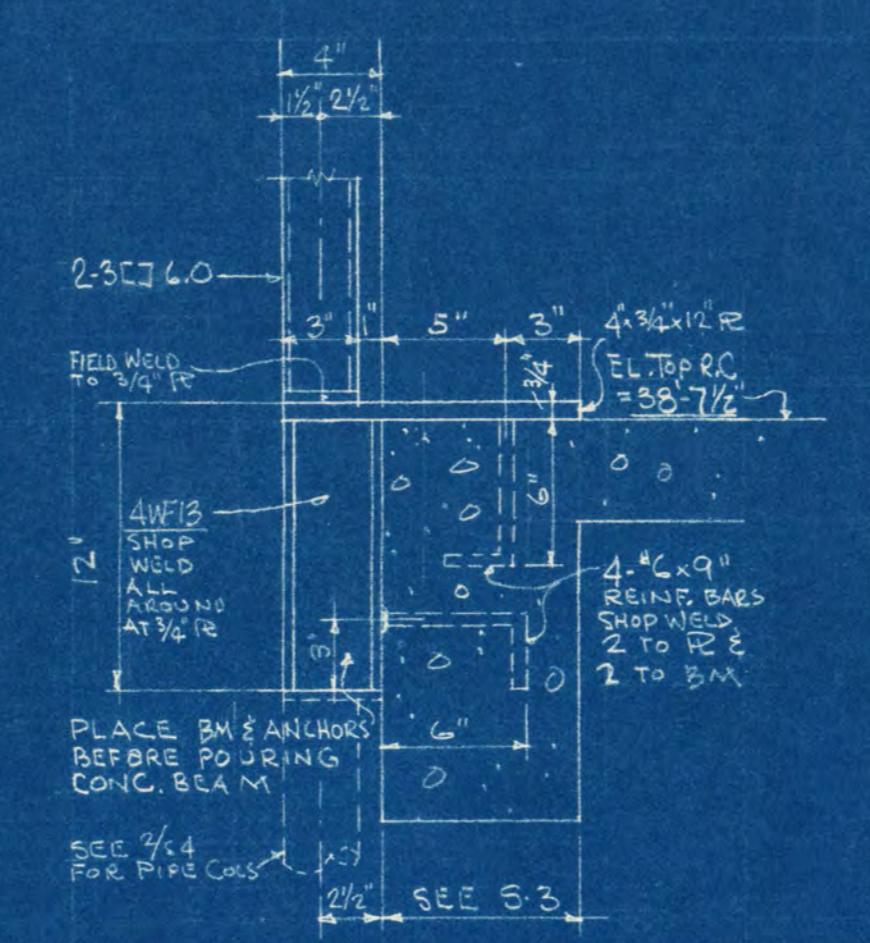
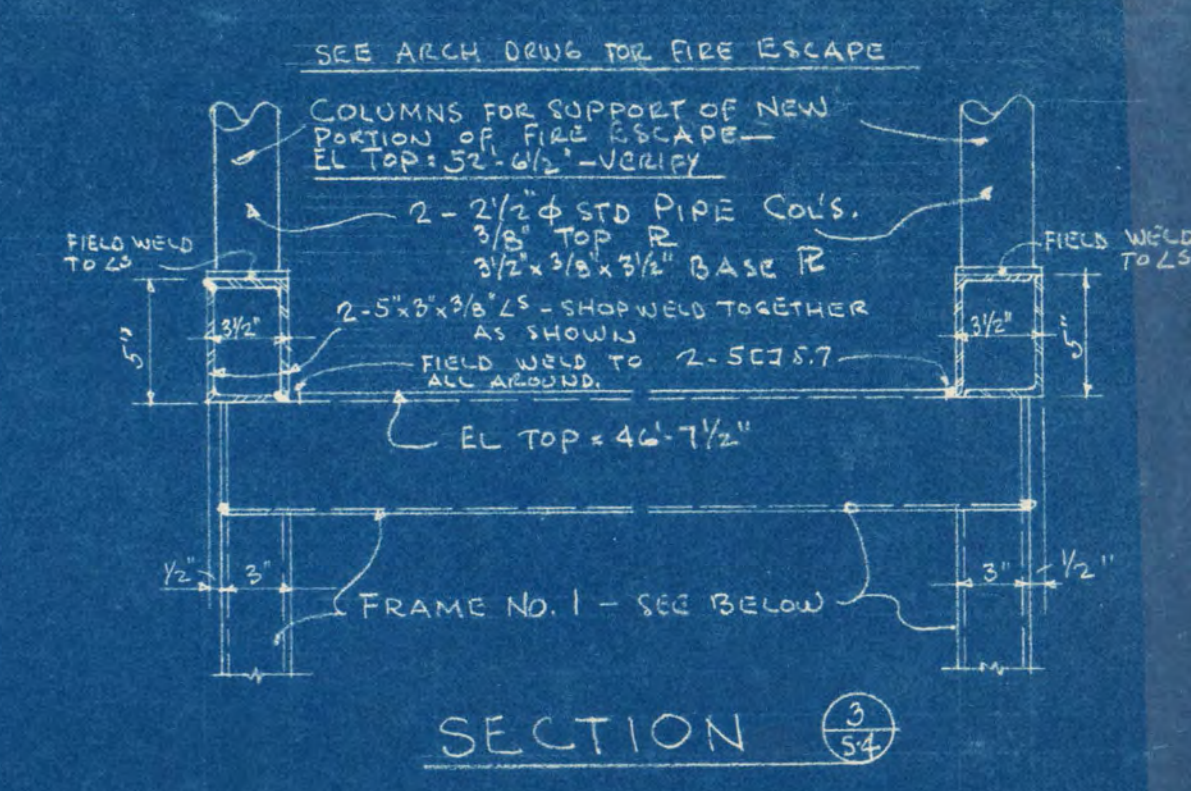
ROOF CONCRETE BEAM SCHEDULE

BEAM MARK	NO	THUS	BEAM SIZE		STR. BOT. BARS		TOP BARS		STIRRUPS OR TIES		REMARKS
			W"	D"	NO	SIZE	NO	SIZE	NO	SIZE	
RB1	2	12	12 1/2	2	#6	2	#6	4	#3 @ 12" O.C.	ADD 3 #6 x 3'-0" HOOK TOP AT DISCONTIN. END	
RB2	3	16	12 1/2	2	#7	2	#7	4	#3 @ 12" O.C.	ADD 3 #6 x 3'-0" HOOK TOP AT DISCONTIN. END	
RB3	32	16	12 1/2	1	#7	1	#7	4	#3 @ 12" O.C.	ADD 3 #6 x 3'-0" HOOK TOP AT DISCONTIN. END	
RB4	2	16	12 1/2	2	#7	2	#7	4	#3 @ 12" O.C.	ADD 3 #6 x 3'-0" HOOK TOP AT DISCONTIN. END	
RB5	2	12	20	4	#10	2	#8	20	#3 @ 24" O.C. BAL #12	BOTTOM BARS IN 2 LAYERS	
RB6	1	30	12 1/2	6	#8	3	#6	6	#3 @ 12" O.C.	ADD 3 #6 x 3'-0" HOOK TOP AT DISCONTIN. END	
RB7	1	30	12 1/2	6	#8	3	#6	4	#3 @ 12" O.C.	ADD 3 #6 x 3'-0" HOOK TOP AT DISCONTIN. END	
RB8	2	30	12 1/2	5	#6	5	#7	4	#3 @ 12" O.C.	LAP 2 BOTTOM BARS 12" AT COUS - (EACH SIDE OF COUS)	
RB9	1	30	12 1/2	5	#6	5	#7	4	#3 @ 12" O.C.	LAP 2 BOTTOM BARS 12" AT COUS - (EACH SIDE OF COUS)	
RB10	1	30	12 1/2	5	#6	5	#7	4	#3 @ 12" O.C.	LAP 2 BOTTOM BARS 12" AT COUS - (EACH SIDE OF COUS)	
RB11	1	24	12 1/2	5	#6	4	#6	4	#3 @ 12" O.C.	LAP 2 BOTTOM BARS 12" AT COUS - (EACH SIDE OF COUS)	
RB12	2	3	24	4	#9	2	#8	27	#3 @ 24" O.C. BAL #12	BOTTOM BARS IN 2 LAYERS	
RB13	1	3	24	2	#7	2	#6	13	#3 @ 12" O.C. BAL #12	TOP BARS UNDER TOP BARS FROM RB10	
RB14	2	3	24	4	#10	2	#8	18	#3 @ 12" O.C. BAL #12	BOTTOM BARS IN 2 LAYERS. TOP BARS UNDER TOP BARS FROM RB11	
RB15	1	3	24	2	#7	2	#6	13	#3 @ 12" O.C. BAL #12	TOP BARS UNDER TOP BARS FROM RB17	
RB16	1	24	12 1/2	4	#9	4	#6	4	#3 @ 12" O.C.	LAP 2 BOTTOM BARS 12" AT COUS - (EACH SIDE OF COUS)	
RB17	1	30	12 1/2	5	#6	4	#6	4	#3 @ 12" O.C.	LAP 2 BOTTOM BARS 12" AT COUS - (EACH SIDE OF COUS)	
RB18	1	30	12 1/2	4	#6	4	#7	4	#3 @ 12" O.C.	LAP 2 BOTTOM BARS 12" AT COUS - (EACH SIDE OF COUS)	
RB19	1	30	12 1/2	5	#6	4	#7	4	#3 @ 12" O.C.	LAP 2 BOTTOM BARS 12" AT COUS - (EACH SIDE OF COUS)	
RB20	1	30	12 1/2	6	#8	6	#6	6	#3 @ 12" O.C.	LAP 2 BOTTOM BARS 12" AT COUS - (EACH SIDE OF COUS)	

SEE DRWG S-3 FOR BEAM & JOIST SCHEDULE NOTES

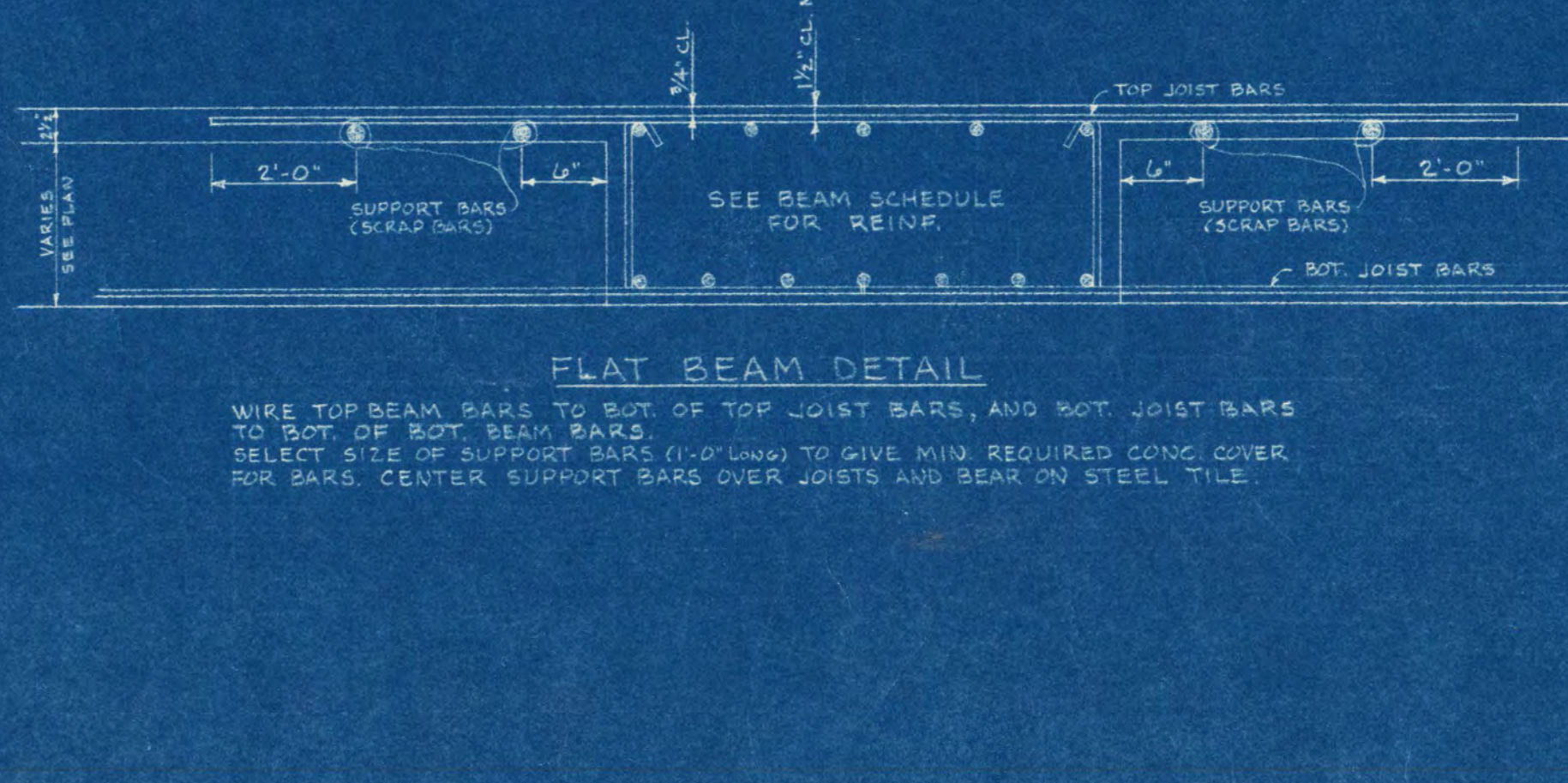
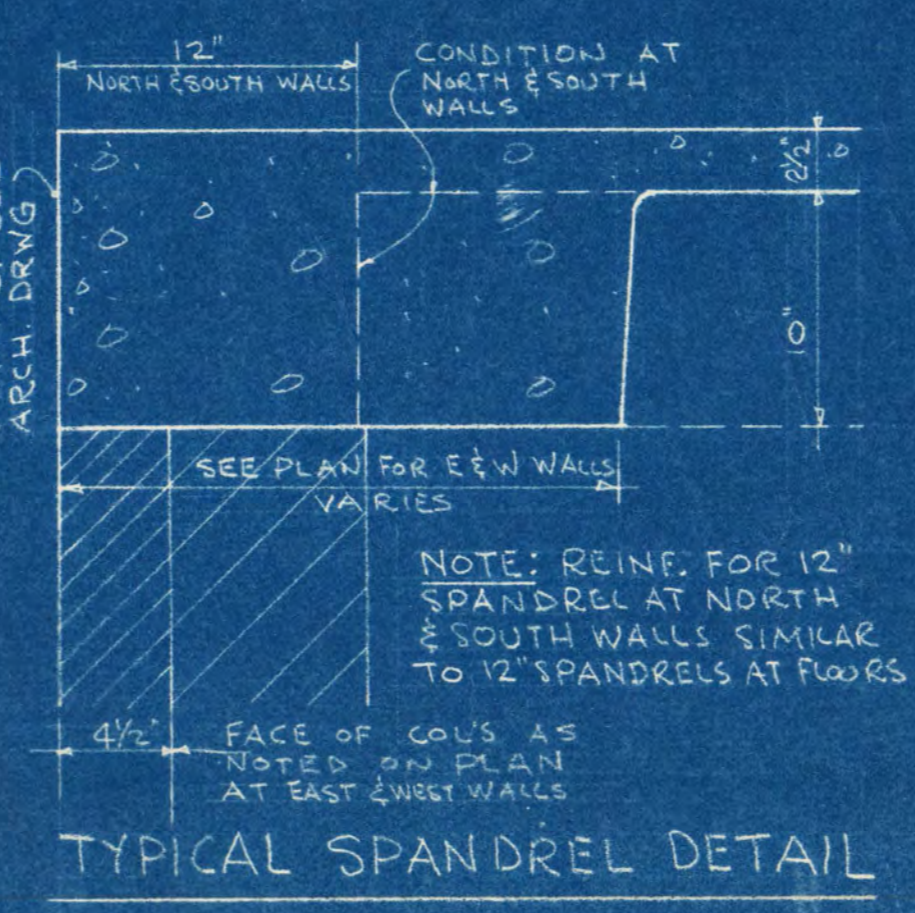
ROOF CONCRETE JOIST SCHEDULE

JOIST MARK	NO	THUS	JOIST SIZE		STR. BOT. BARS		TOP BARS		REMARKS
			W"	D"	NO	SIZE	NO	SIZE	
RJ1	2	22 1/2	12 1/2	3	#6	3	#6	ADD #3 TIES @ 12" O.C. FOR RJ1, RJ2, RJ3	
RJ2	2	22 1/2	12 1/2	3	#6	3	#6	EXTEND 2 TOP BARS FROM 1/2 FT. RJ1 TO NEXT RIBS @ 12" O.C. EACH END. TOP BAR TO NEXT ADJACENT SPAN	
RJ3	2	22 1/2	12 1/2	3	#6	3	#6	BOTTOM BARS EXTEND TO WITHIN 2' EDGE OF CONC. SOUTH WALL	
RJ4	8	5	1	#4	1	#4	1	ADD 2 #4 TOP @ 10" O.C. CENTER ON COLS 25 & 74. EXTEND BOT BARS TO WITHIN 2' EDGE OF CONC. ADD #3 TIES @ 12" O.C.	
RJ5	8	5	1	#4	1	#4	1	ADD 13 #4 TIES @ 12" O.C.	
RJ6	10	5	1	#4	1	#4	1	ADD 13 #4 TIES @ 12" O.C.	
RJ7	2	20	4	#7	4	#7	4	ADD 13 #4 TIES @ 12" O.C.	
RJ8	2	20	4	#7	4	#7	4	ADD 13 #4 TIES @ 12" O.C.	
RJ9	16	5	1	#4	1	#4	1	ADD 13 #4 TIES @ 12" O.C.	
RJ10	29	5	1	#4	1	#4	1	ADD 13 #4 TIES @ 12" O.C.	
RJ11	3	20	3	#6	3	#6	3	ADD 13 #4 TIES @ 12" O.C.	
RJ12	11	5	1	#4	1	#4	1	ADD 13 #4 TIES @ 12" O.C.	
RJ13	2	30	6	#7	4	#7	4	ADD 13 #4 TIES @ 12" O.C.	
RJ14	6	5	1	#4	1	#4	1	ADD 13 #4 TIES @ 12" O.C.	
RIS, RJSA	9	5	1	#4	1	#4	1	ADD 13 #4 TIES @ 12" O.C.	



ROOF FRAMING PLAN

SEE PLAN FOR DIMENSIONS & ELEV. SEE NOTE FOR PENTHOUSE ROOF SLABS



ADDITION TO SHOEMAKER HALL
ST. CLOUD STATE COLLEGE
ST. CLOUD
MINNESOTA

DATE: 8.2.67

PROJECT NO: ST.CLOUD

SHEET NO: 54

OF 4

B-1B