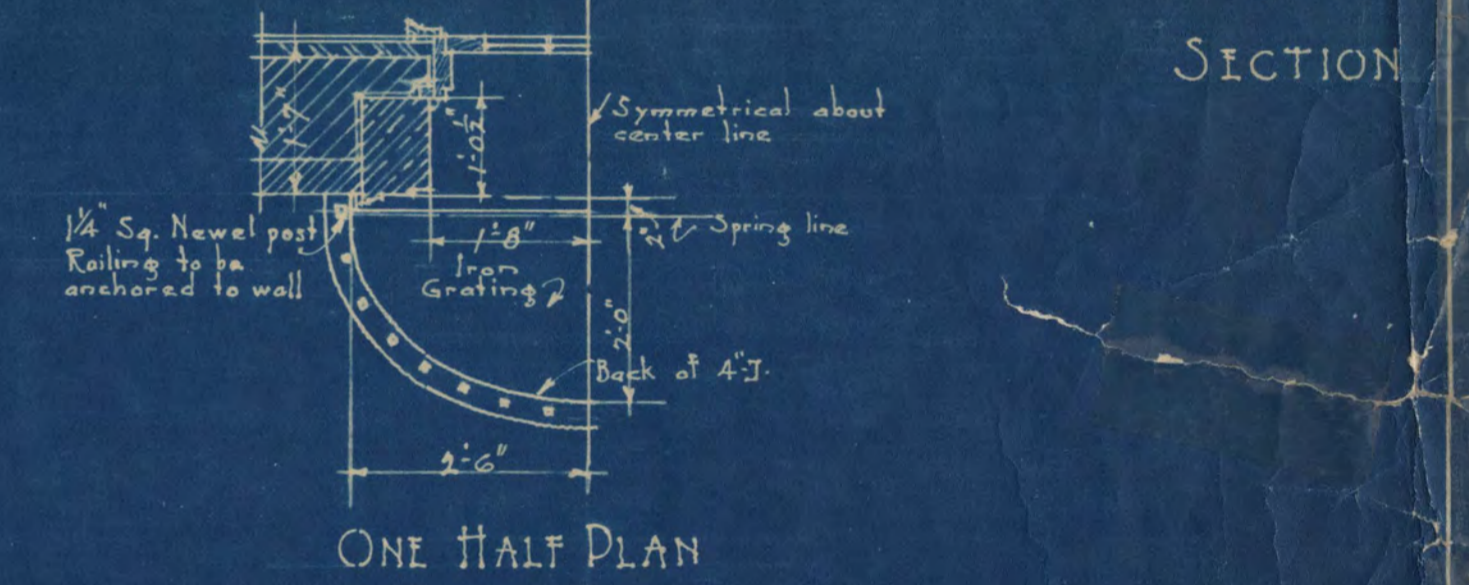
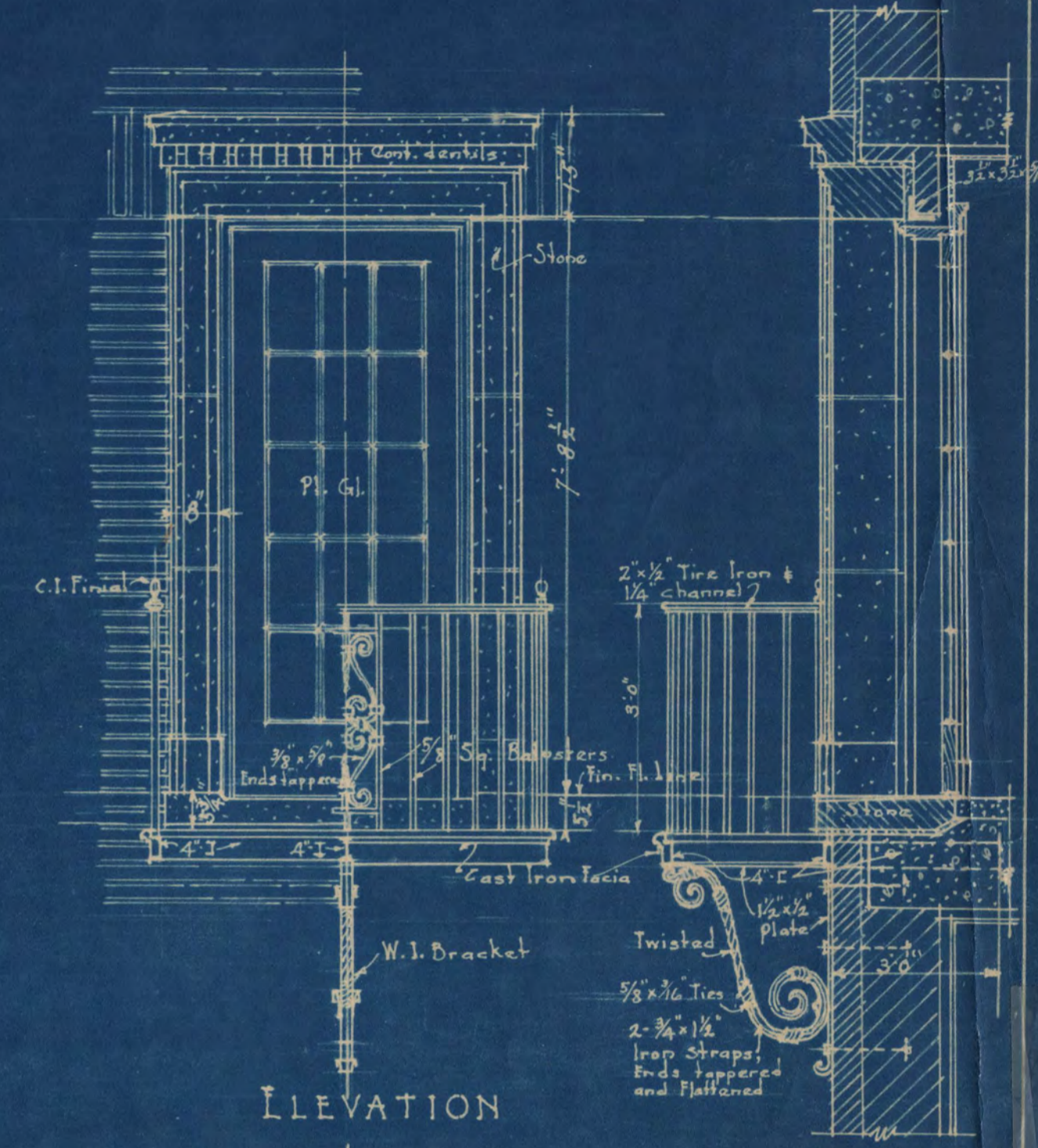
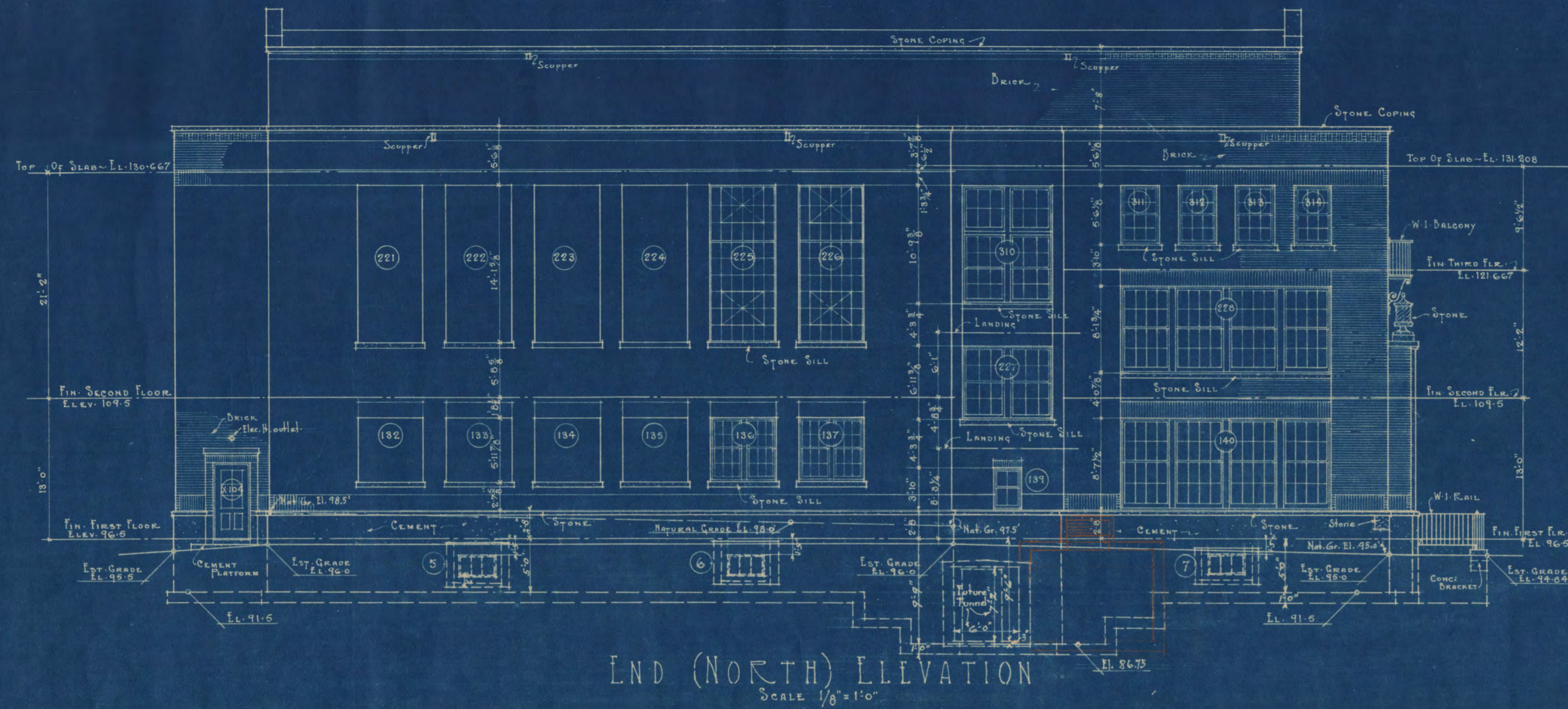


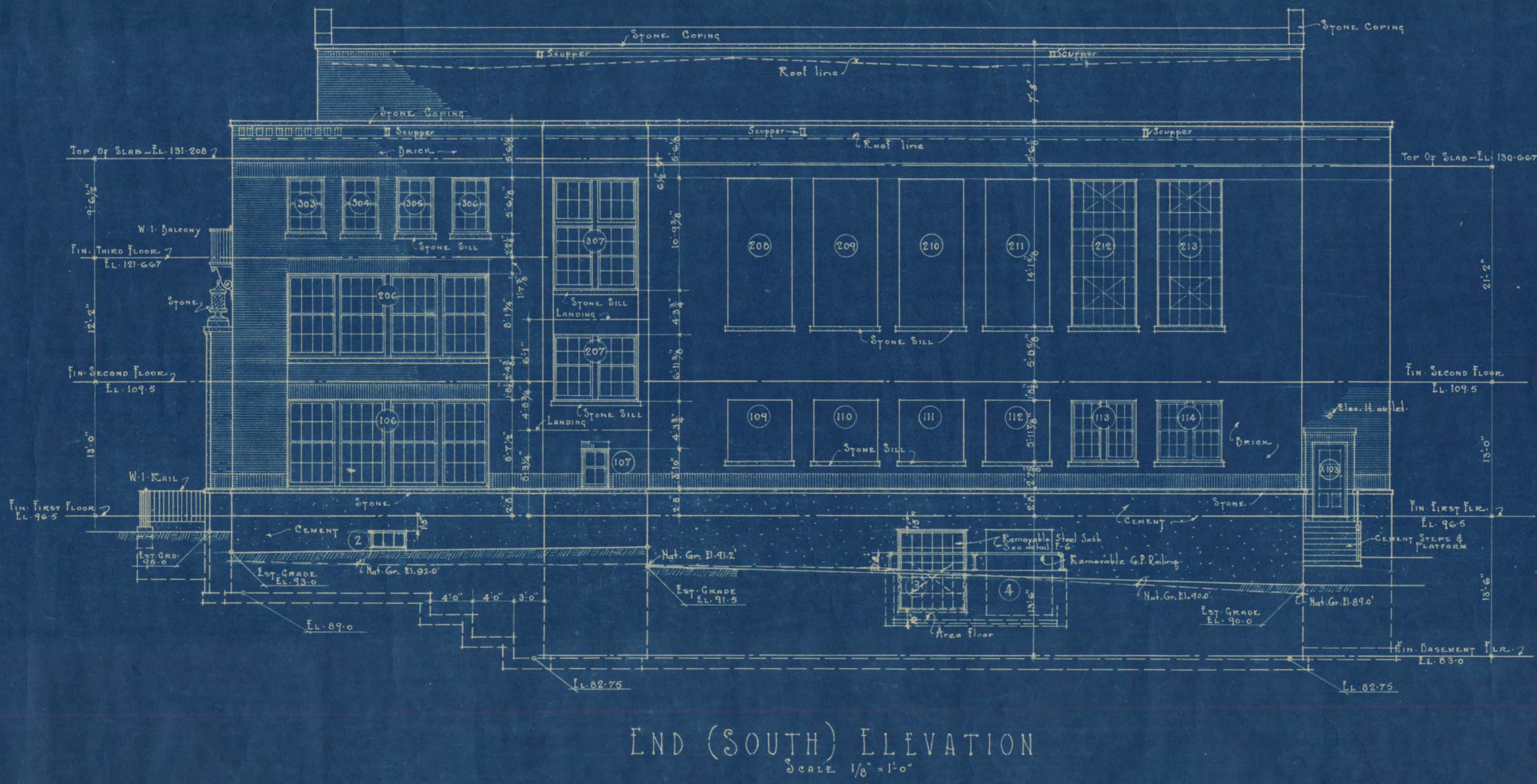
FRONT (WEST) ELEVATION  
SCALE 1/8" = 1'-0"

**PHYSICAL EDUCATION BUILDING**  
 STATE TEACHERS COLLEGE  
 ST. CLOUD, MINNESOTA  
 G. H. JOHNSTON - ARCHITECT  
 ST. PAUL, MINNESOTA.

MAD: F. J. M. L., TRACED BY M. J. L., CHECKED BY  
 SCALE 1/8" = 1'-0" DATE Sept. 1924  
 ORDER NO. 3259 SHEET NO. 10

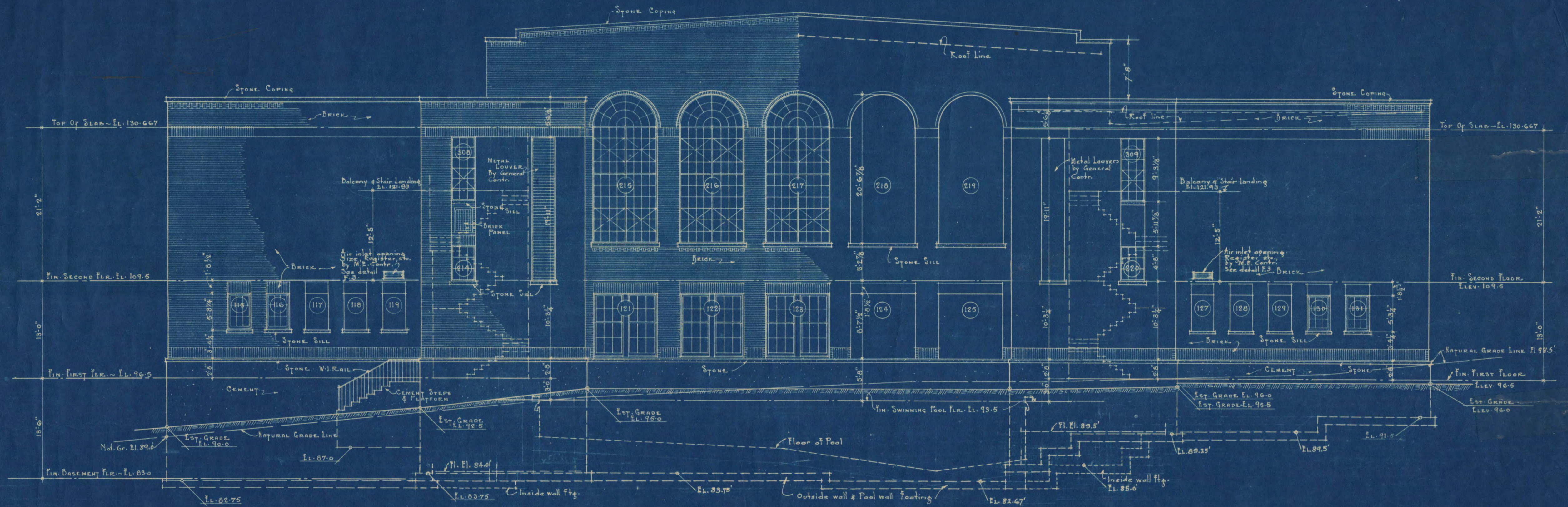


DETAILS OF DOORS X301 & X302 & IRON BALCONY  
Scale 1/2" = 1'-0"



PHYSICAL EDUCATION BUILDING  
STATE TEACHERS COLLEGE  
ST. CLOUD, MINNESOTA  
C. H. JOHNSTON ARCHITECT  
ST. PAUL, MINNESOTA

MAD: BY M.B.R.G. TRACED BY M.B.R.G. BY M.B.R.G.  
SCALE 1/8" = 1'-0" 1/2" = 1'-0" DATE Sep 11, 1929  
ORDER NO. 3259 SHEET NO. 2



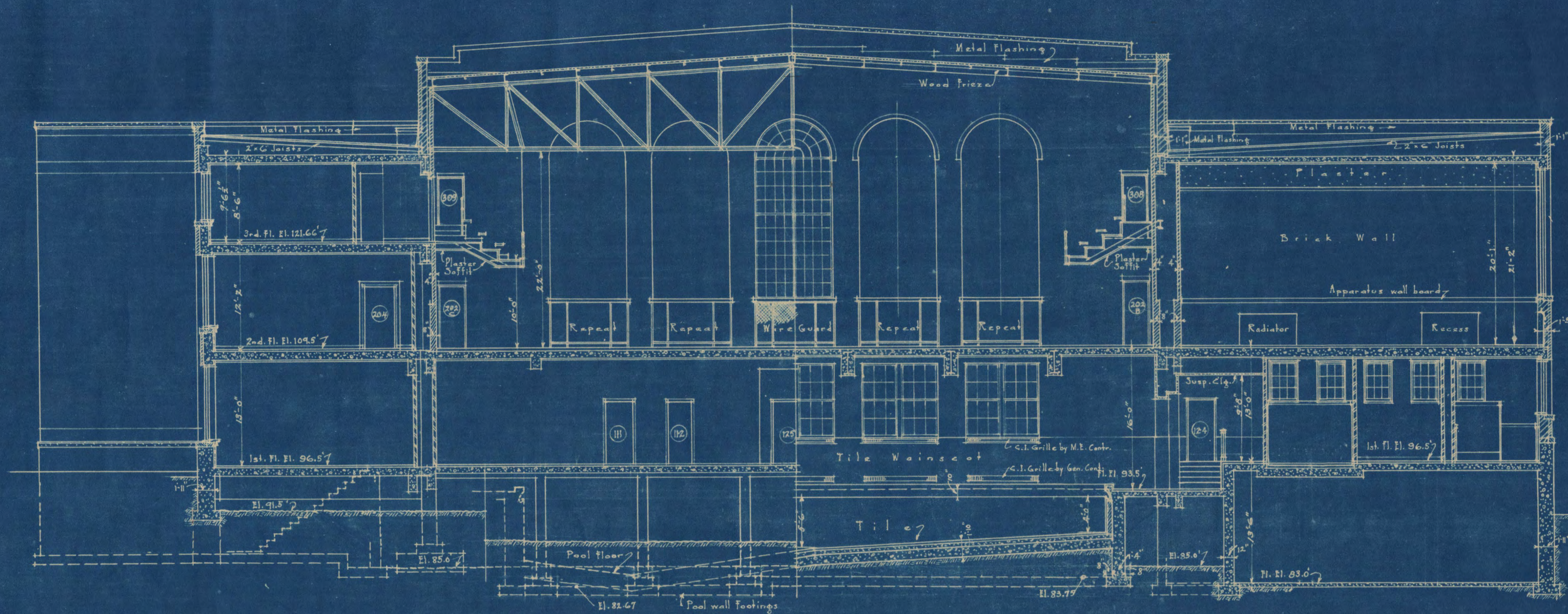
REAR (EAST) ELEVATION  
SCALE 1/8" = 1'-0"

PHYSICAL EDUCATION BUILDING

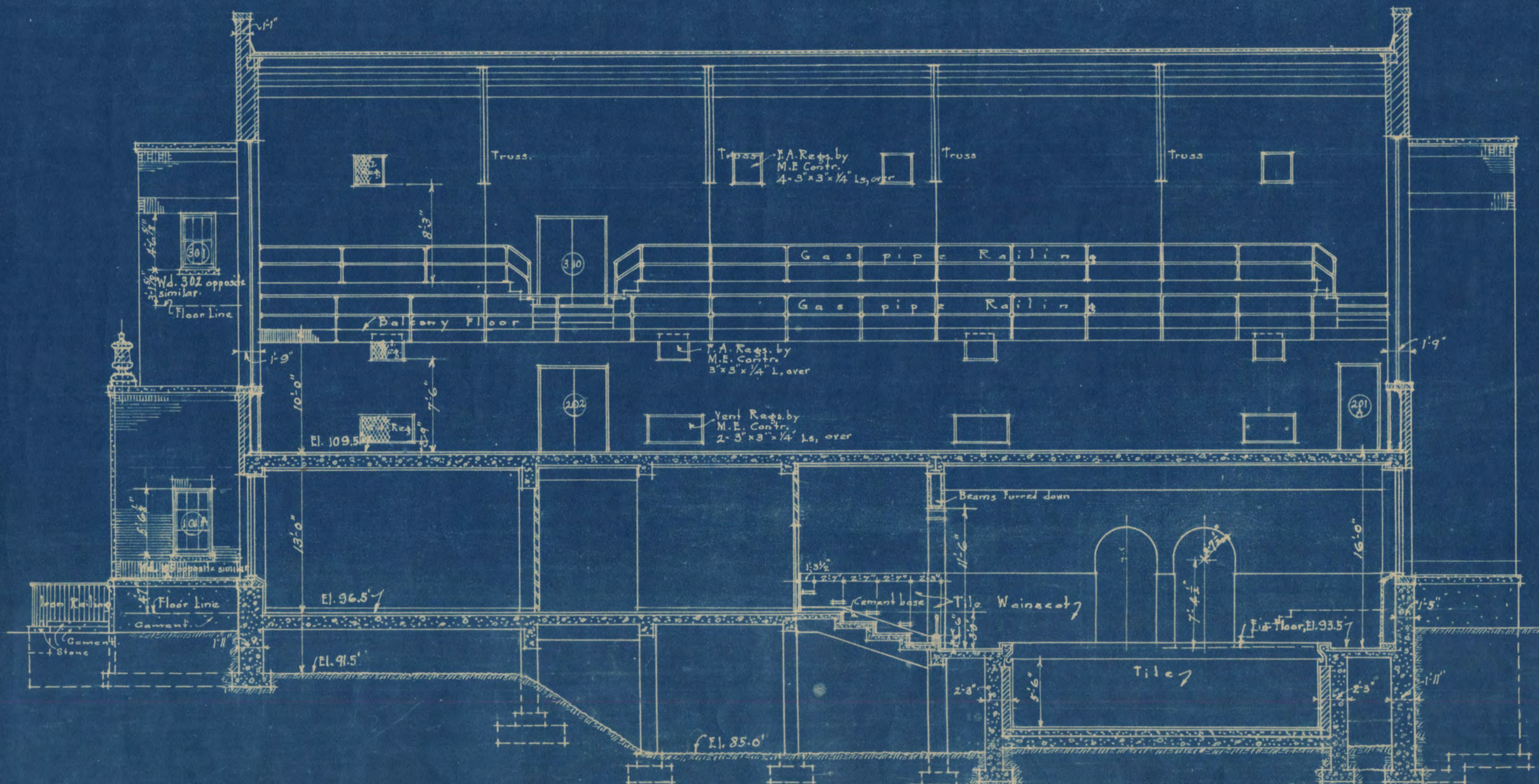
STATE TEACHERS COLLEGE  
ST. CLOUD, MINNESOTA

C. H. JOHNSTON - ARCHITECT  
ST. PAUL, MINNESOTA.

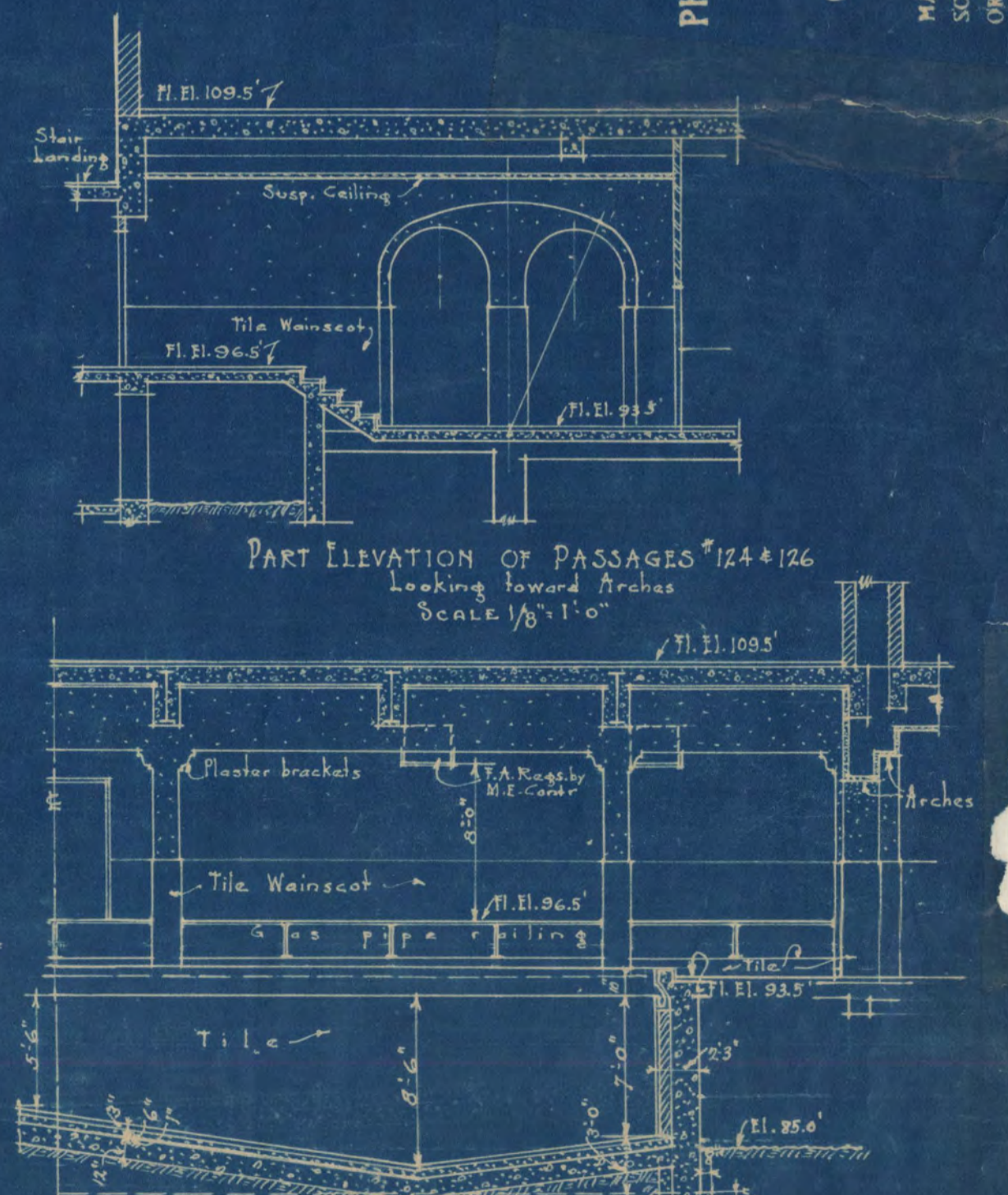
MADE BY M. J. L. TRACED BY M. J. L. CHECKED BY  
SCALE 1/8" = 1'-0" DATE Sept. 1929  
ORDER NO. 3259 SHEET NO. 3



SECTION ON LINE "C-C"  
SCALE 1/8" = 1'-0"



SECTION "D-D" - ON C  
SCALE 1/8" = 1'-0"



PART ELEVATION OF PASSAGES 124 x 126  
Looking toward Arches  
SCALE 1/8" = 1'-0"

ONE HALF ELEVATION OF SWIMMING POOL  
SCALE 1/8" = 1'-0"

PHYSICAL EDUCATION BUILDING

STATE TEACHERS COLLEGE

ST. CLOUD, MINNESOTA

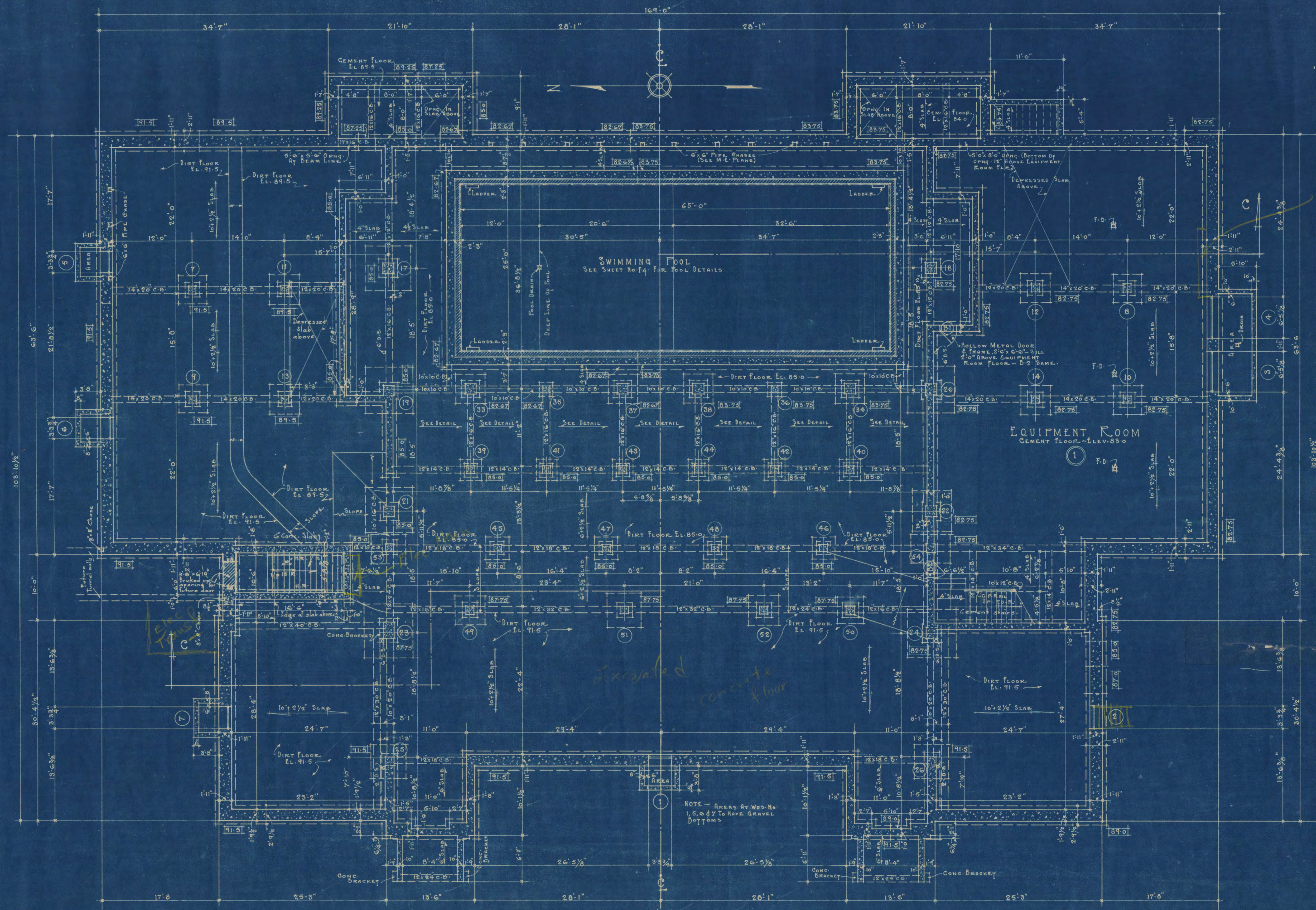
C. H. JOHNSTON - ARCHITECT

ST. PAUL, MINNESOTA

MADE BY R. G. G. TRACED BY R. G. G. CHECKED BY

SCALE 1/8" = 1'-0" DATE Sept. 1929

ORDER NO. 52357 SHEET NO. 4



COLUMN FOOTING SCHEDULE

COL. NO.	COL. SIZE	FTG. CAP.	FOOTING	REINFORCEMENT	COL. NO.	COL. SIZE	FTG. CAP.	FOOTING	REINFORCEMENT
7, 8, 9, 10	14" x 14"	2'2" x 2'2" x 0'10"	4'3" x 4'3" x 1'3"	7-9/8" 4-9" Long Each Way	39, 40, 41	12" x 12"	1'10" x 1'10" x 0'10"	3'3" x 3'3" x 1'2"	12" x 12"
11, 12, 13, 14	14" x 14"	2'2" x 2'2" x 0'10"	4'6" x 4'6" x 1'3"	12-9/8" 5'0" " " "	42, 43, 44	12" x 12"	2'0" x 2'0" x 0'10"	3'6" x 3'6" x 1'3"	12" x 12"
17, 18	20" x 20"	2'9" x 2'9" x 1'0"	6'10" x 6'10" x 1'6"	13-3/4" 7'4" " " "	49	14" x 14"	2'2" x 2'2" x 1'0"	4'0" x 4'0" x 1'3"	8-9/8" 5'0" Long Each Way
19, 20	20" x 20"	2'9" x 2'9" x 1'0"	7'2" x 7'2" x 1'9"	13-9/4" 7'8" " " "	50	14" x 14"	2'0" x 2'0" x 0'10"	3'11" x 3'11" x 1'3"	8-1/2" 4'5" " " "
21, 22	20" x 20"	2'9" x 2'9" x 1'0"	6'0" x 6'0" x 1'3"	14-3/8" 6'6" " " "	51	14" x 14"	2'2" x 2'2" x 0'10"	5'3" x 5'3" x 1'4"	10-3/8" 5'9" " " "
23	20" x 31 1/2"	2'9" x 3'6" x 1'0"	7'5" x 7'5" x 2'0"	13-3/4" 7'11" " " "	52	14" x 14"	2'2" x 2'2" x 1'0"	4'7" x 4'7" x 1'3"	8-9/8" 5'9" " " "
24	20" x 20"	2'9" x 2'9" x 1'0"	7'5" x 7'5" x 2'0"	13-3/4" 7'11" " " "	53, 54	16" x 16"	2'2" x 2'2" x 0'10"	4'0" x 4'0" x 1'4"	12-3/8" 6'8" " ONE WAY
25, 26	16" x 16"	2'4" x 2'4" x 1'0"	5'3" x 5'3" x 1'4"	10-9/8" 5'9" " " "	55, 56	12" x 12"	2'4" x 2'4" x 1'2"	2'4" x 2'4" x 1'2"	12-3/8" 5'0" " " "
33, 34, 37, 38	20" x 20"	2'8" x 2'8" x 0'10"	4'0" x 4'0" x 1'3"	8-9/8" 5'0" " " "					

FOUNDATION & BASEMENT PLAN

SCALE 1/8" = 1'-0"

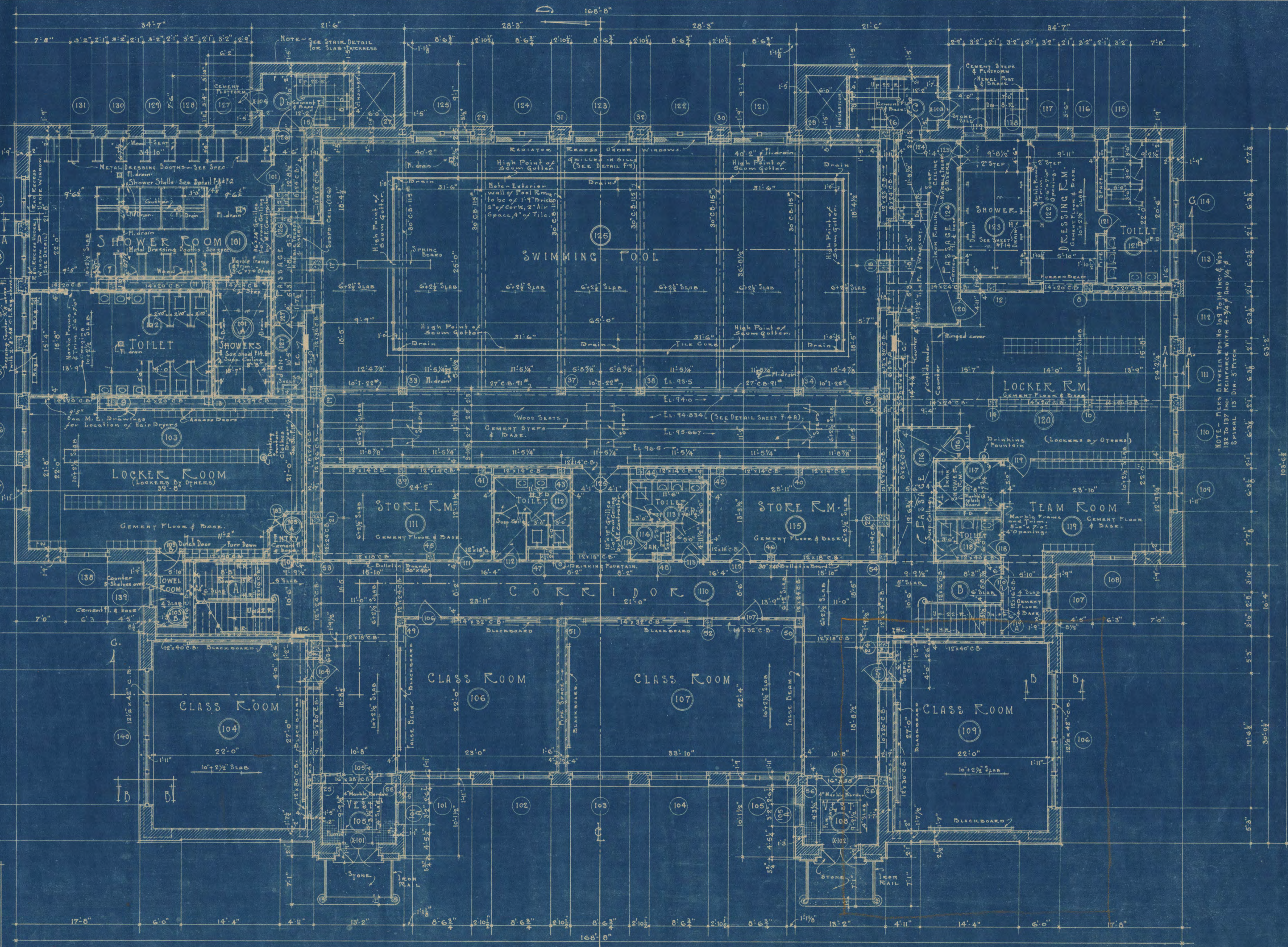
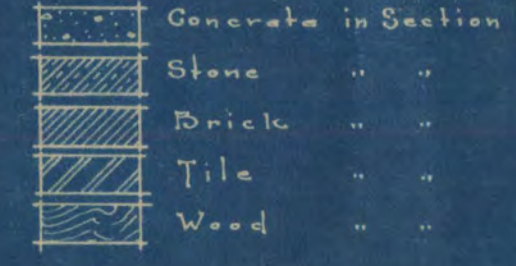
NOTE - FIGURES GIVEN THUS [91.5] INDICATE ELEV. OF TOP OF FOOTING CAP FOR COLUMNS, AND TOP FOOTINGS FOR WALLS

PHYSICAL EDUCATION BUILDING  
 STATE TEACHERS COLLEGE  
 ST. CLOUD, MINNESOTA  
 C. H. JOHNSTON - ARCHITECT  
 ST. PAUL, MINNESOTA.

MADE BY M.L.L. TRACED BY M.L.L. CHECKED BY  
 SCALE 3/8" = 1'-0" DATE SEP. 1929.  
 ORDER NO. 3357 SHEET NO. 5

COLUMN SCHEDULE	
No's	SIZE.
7, 8,	14" x 14"
11, 12,	14" x 14"
15, 16, 20,	16" x 16"
17, 18, 19, 21,	20" x 20"
22, 23, 24,	
27, 28, 29,	10" c. b. 31" (Detail)
30, 31, 32,	
33, 34,	10" c. b. 31" (Detail)
37, 38,	
39, 40, 41,	12" x 12"
42, 43, 44,	
45, 46,	12" x 12"
47, 48,	
49, 50,	14" x 14"
51, 52,	
53, 54,	14" x 14"

KEY TO MATERIALS.

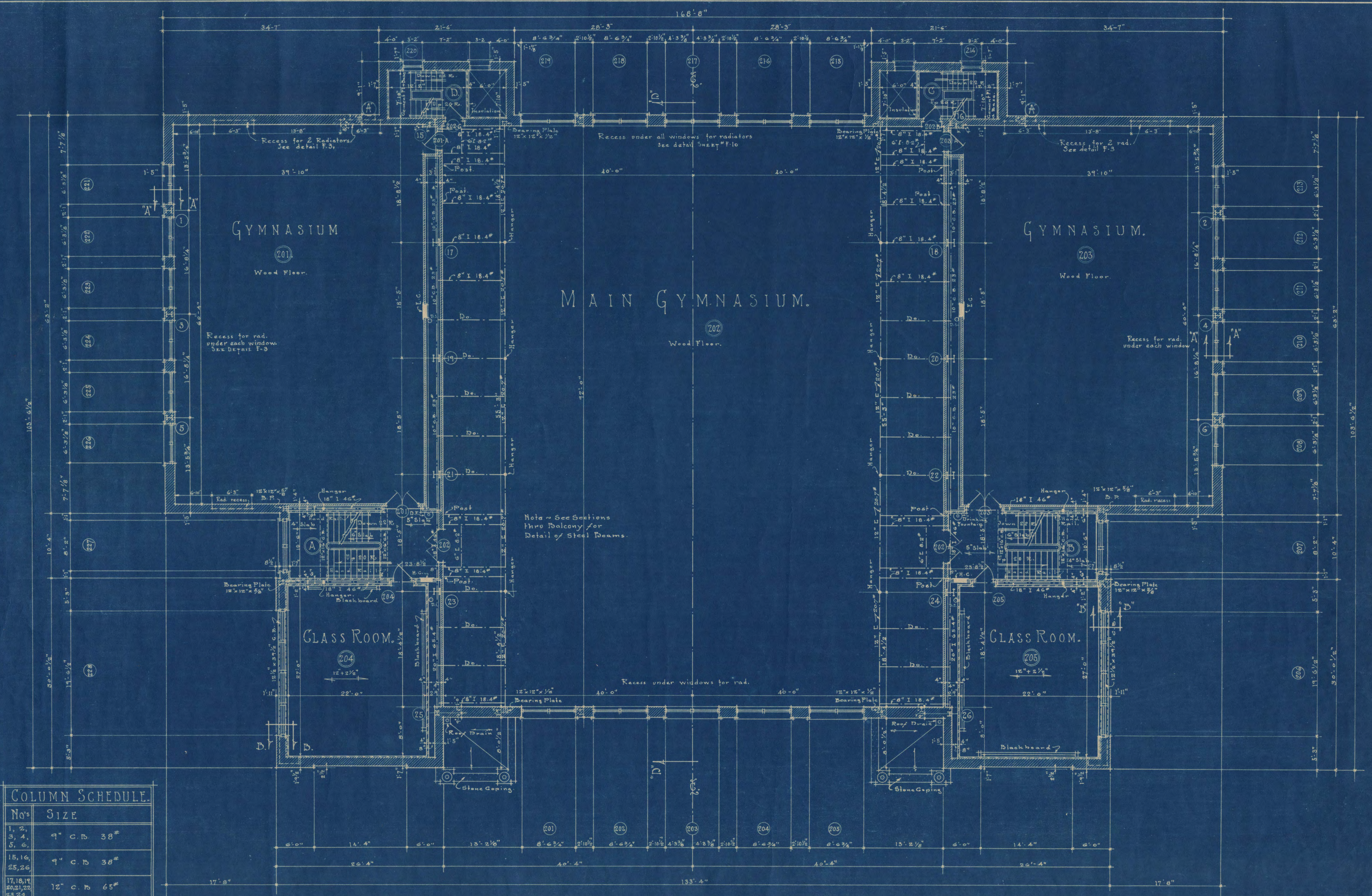


FIRST FLOOR PLAN

SCALE 1/8" = 1'-0"



PHYSICAL EDUCATION BUILDING  
 STATE TEACHERS COLLEGE  
 ST. CLOUD, MINNESOTA  
 C. H. JOHNSTON - ARCHITECT  
 ST. PAUL, MINNESOTA.  
 MADE BY M.S.L. TRACED BY M.S.L. CHECKED BY  
 SCALE 1/8" = 1'-0" DATE Sept. 1929.  
 ORDER NO. 3259 SHEET NO. 6



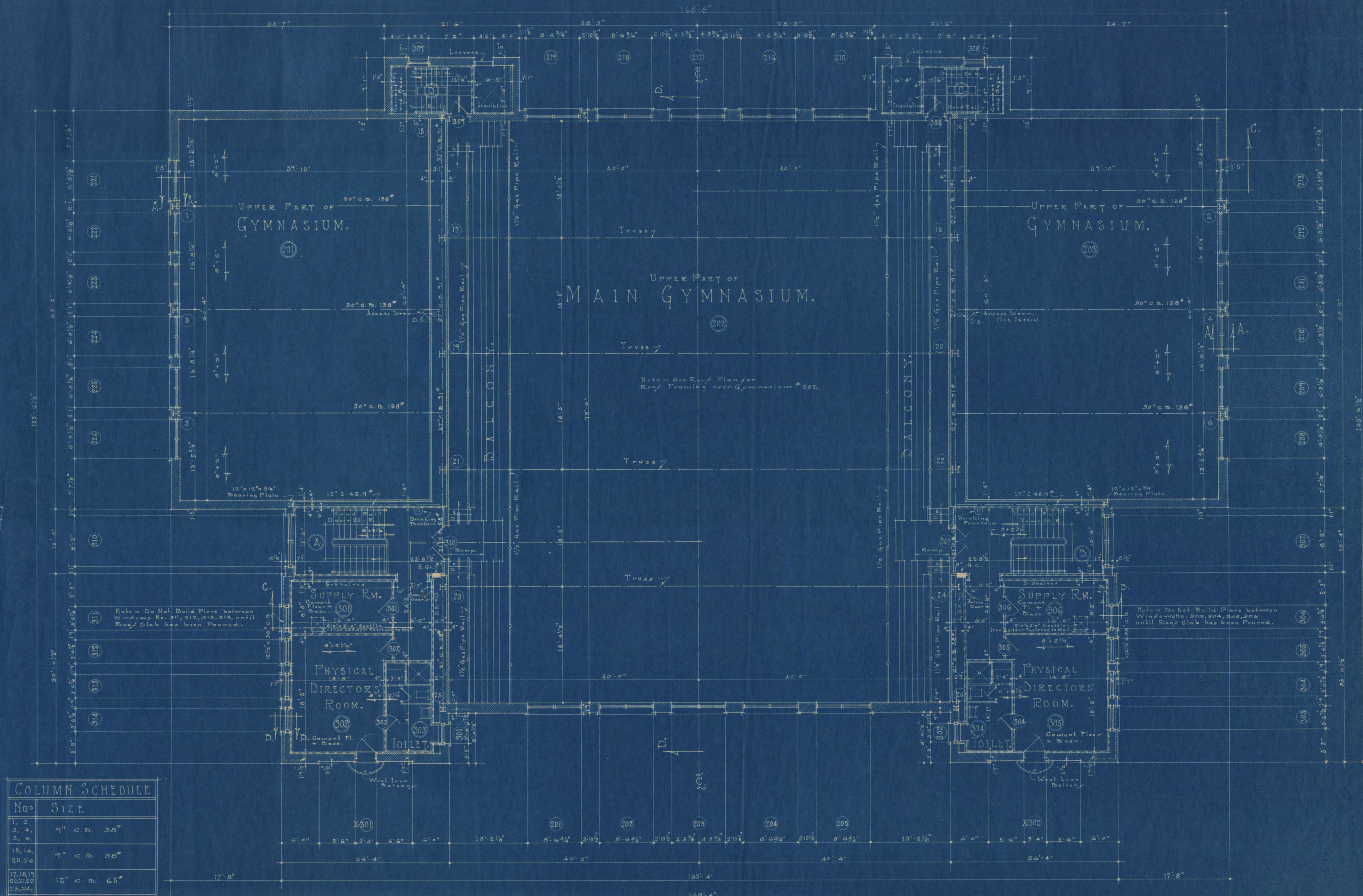
COLUMN SCHEDULE.	
No's	SIZE
1, 2, 3, 4, 5, 6,	9" C. B. 38#
15, 16, 25, 26,	9" C. B. 38#
17, 18, 19, 20, 21, 22, 23, 24,	12" C. B. 65#



SECOND FLOOR PLAN.  
Scale 1/8" = 1'-0"

PHYSICAL EDUCATION BUILDING  
STATE TEACHERS COLLEGE  
ST. CLOUD, MINNESOTA  
C. H. JOHNSTON - ARCHITECT  
ST. PAUL, MINNESOTA.

MADE BY J.P.M. TRACED BY J.P.M. CHECKED BY  
SCALE 1/8" = 1'-0" DATE Sept. 1929  
ORDER NO. 3257



COLUMN SCHEDULE	
No's	SIZE
1, 2, 3, 4, 5, 6,	9" C.B. 38"
15, 16, 25, 26	7" C.B. 38"
17, 18, 19, 20, 21, 22, 23, 24,	12" C.B. 65"

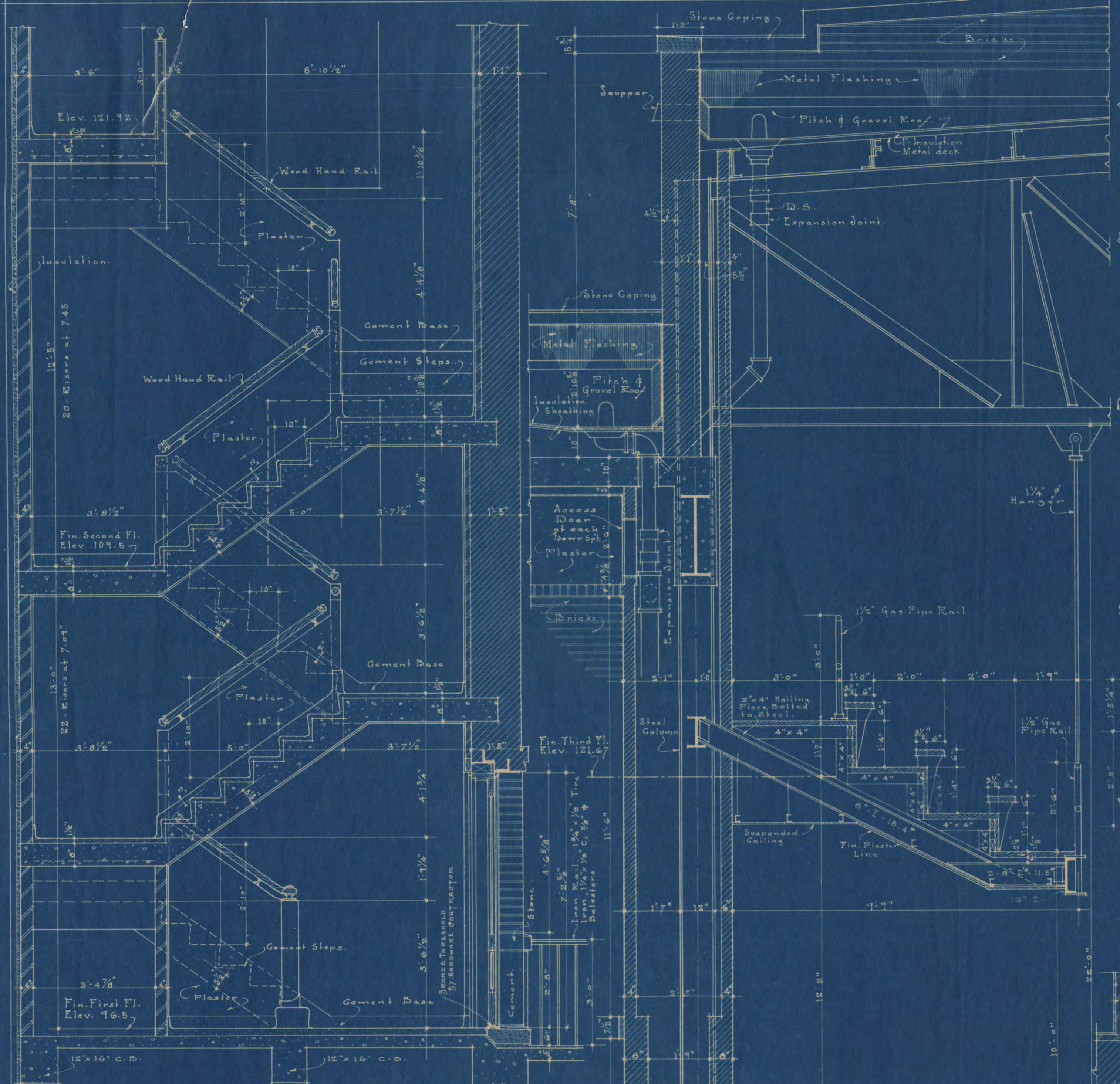
THIRD FLOOR PLAN.  
Scale 1/8" = 1'-0"



PHYSICAL EDUCATION BUILDING  
STATE TEACHERS COLLEGE  
ST. CLOUD, MINNESOTA  
C. H. JOHNSTON - ARCHITECT  
ST. PAUL, MINNESOTA.

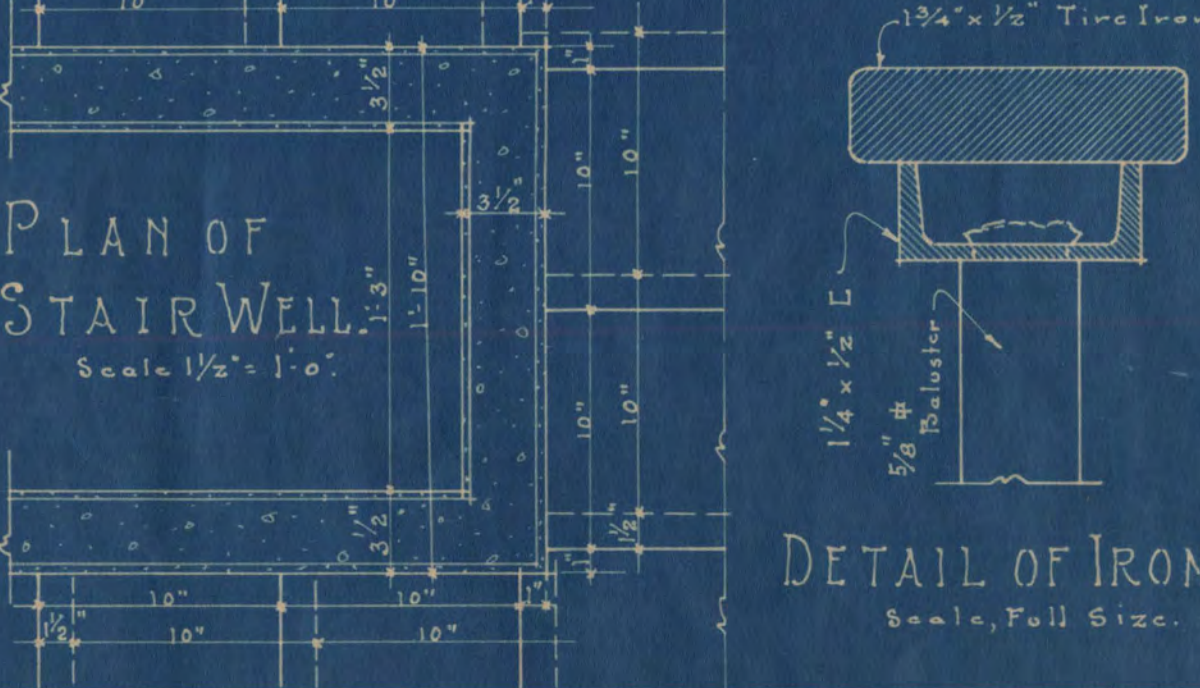
MADE BY J.P.M., TRACED BY J.P.M., CHECKED BY  
SCALE 1/8" = 1'-0" DATE Sept. 1929  
ORDER NO 3259 SHEET NO. 8



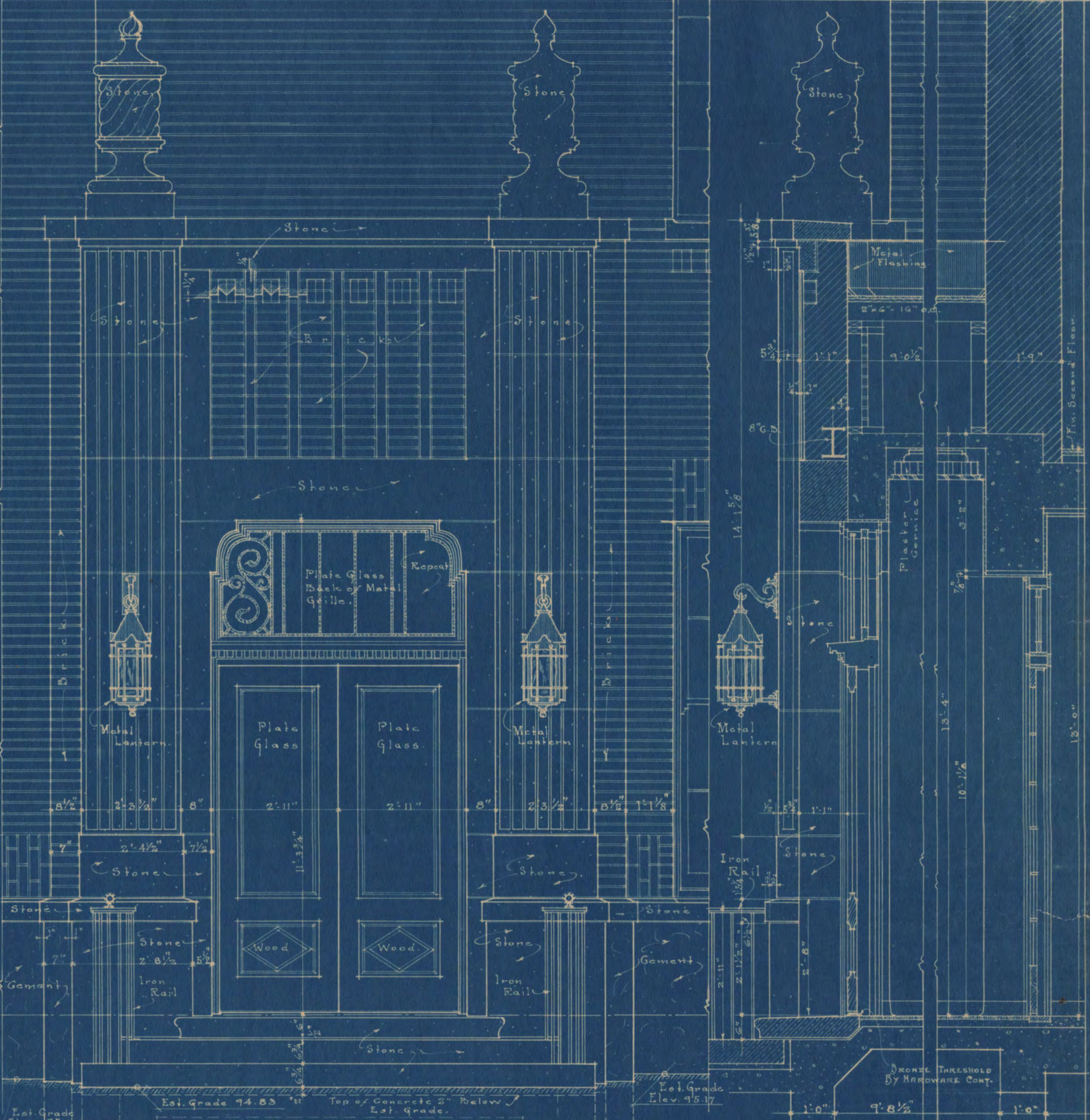


TYPICAL SECTION THRU WALL BETWEEN GYMNASIUMS, ON SECOND FLOOR.  
Scale 1/2" = 1'-0"

SECTION THRU STAIR 'C', STAIR 'D' SIMILAR EXCEPT REVERSED.  
Scale 1/2" = 1'-0"

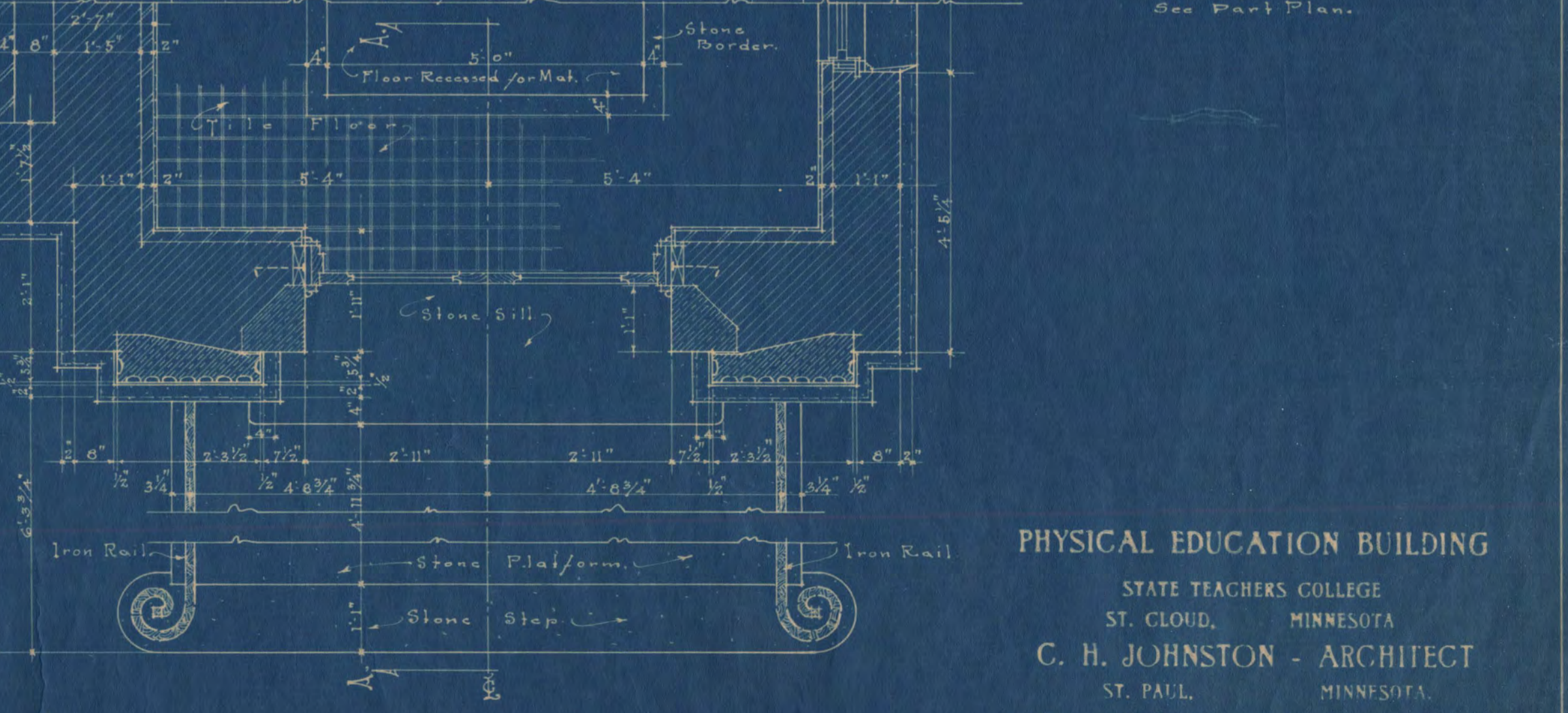


DETAIL OF IRON RAIL.  
Scale, Full Size.



ELEVATION OF FRONT ENTRANCES.  
Scale 1/2" = 1'-0"

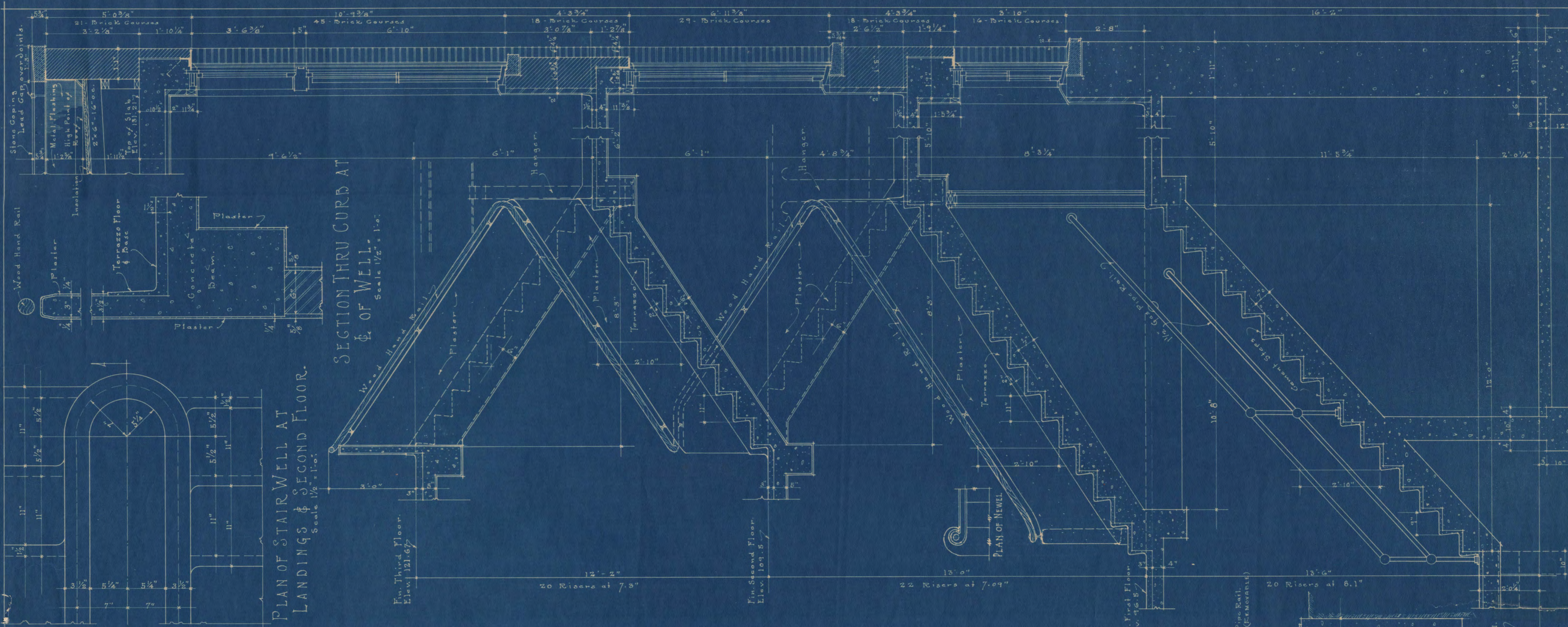
SECTION THRU VESTIBULE AT 'A-A'.  
Scale 1/2" = 1'-0"  
See Part Plan.



PLAN.  
Scale 1/2" = 1'-0"

PHYSICAL EDUCATION BUILDING  
STATE TEACHERS COLLEGE  
ST. CLOUD, MINNESOTA  
C. H. JOHNSTON - ARCHITECT  
ST. PAUL, MINNESOTA.

MADE BY GEL-DRM. TRACED BY J.P.M. CHECKED BY  
SCALE As Noted. DATE Sept. 1929  
ORDER NO. 3259 SHEET NO. 9

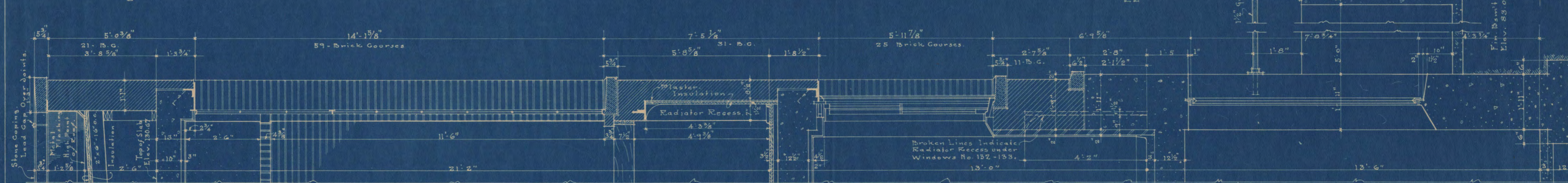


PLAN OF STAIRWELL AT  
LANDINGS & SECOND FLOOR.  
Scale 1/2" = 1'-0"

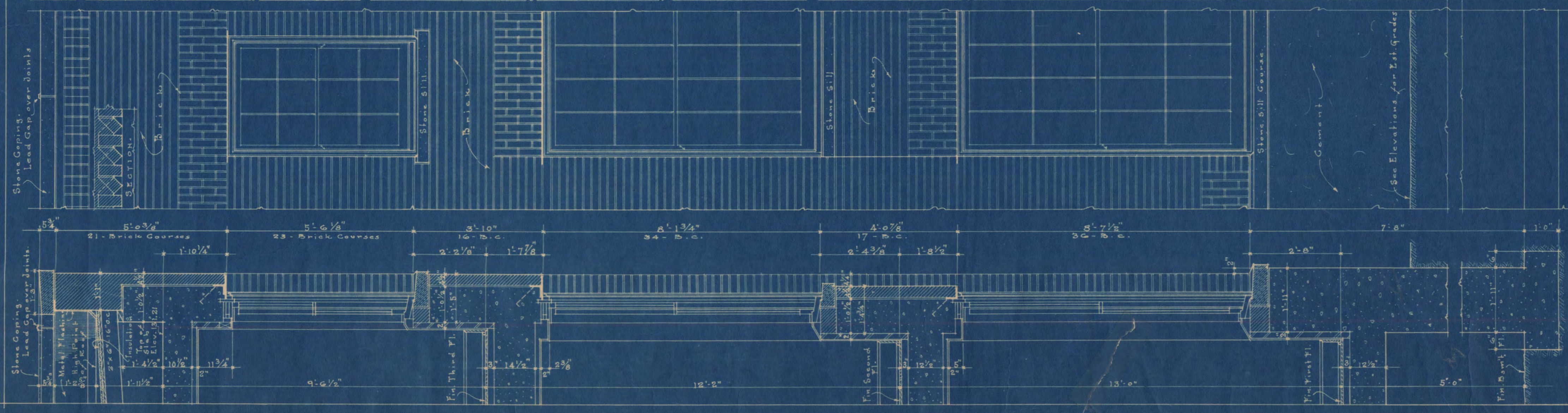
SECTION THRU CURB AT  
WELL.  
Scale 1/2" = 1'-0"

PLAN OF NEWEL

SECTION THRU STAIR "B", STAIR "A" SIMILAR EXCEPT  
FOR BASEMENT RUN. Scale 1/2" = 1'-0"



SECTION THRU WALL  
AT "A-A". Scale 1/2" = 1'-0"



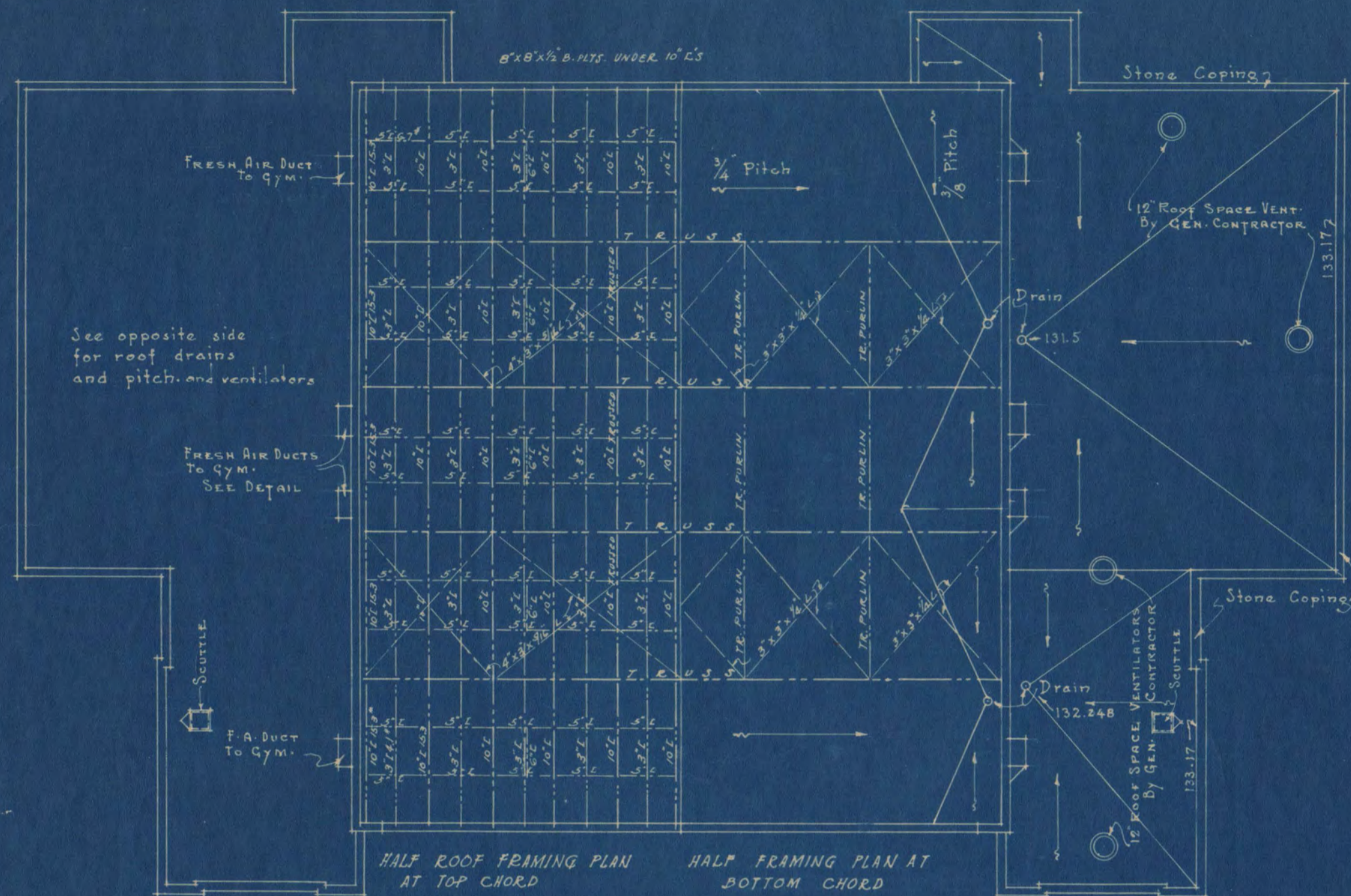
PART ELEVATION.  
Scale 1/2" = 1'-0"

BRICK COURSING  
1- Brick & Joint = 2 1/4"  
Joint between Brick  
and Stone = 3/8" Brick  
Stone Joints = 1/4"

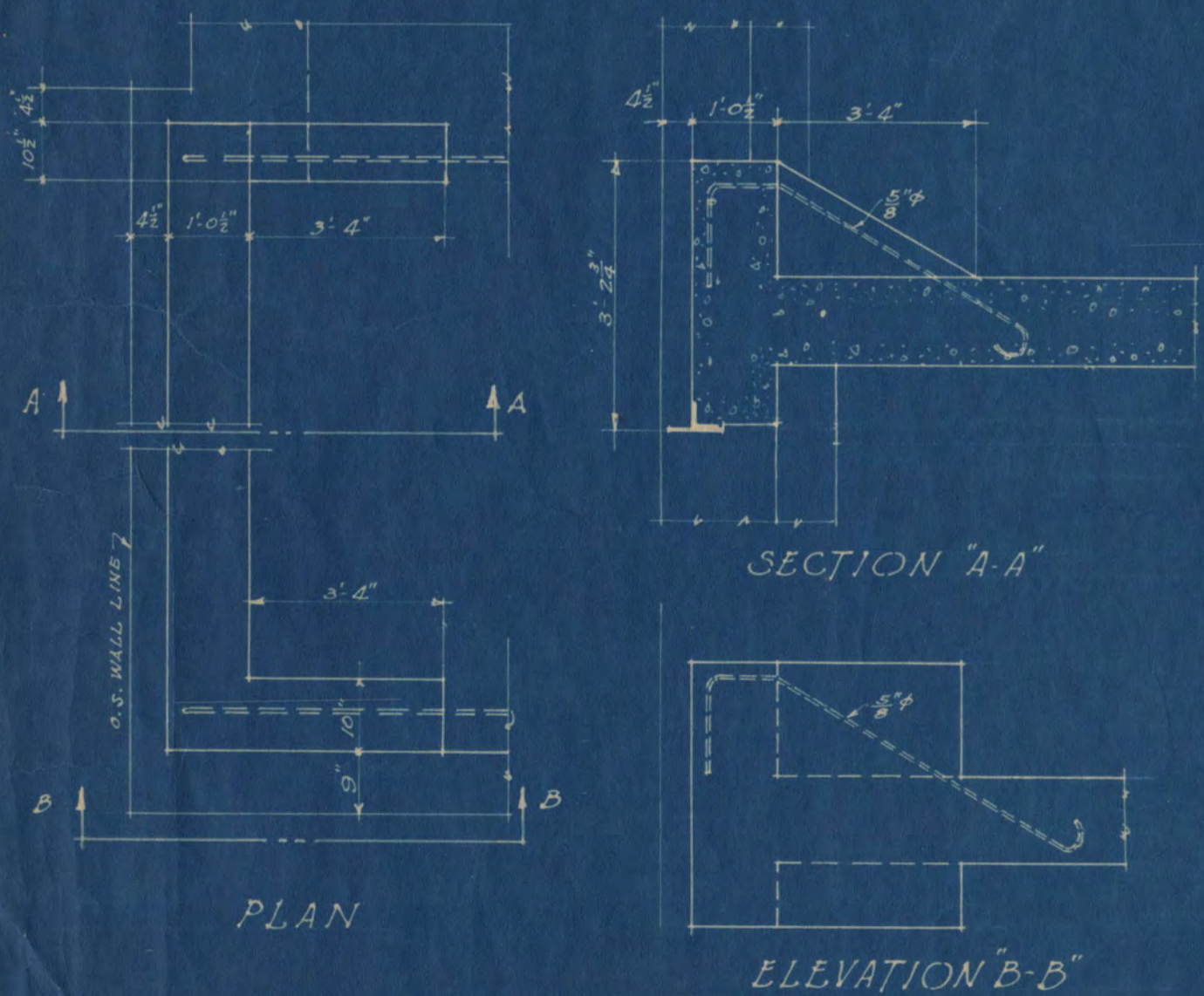
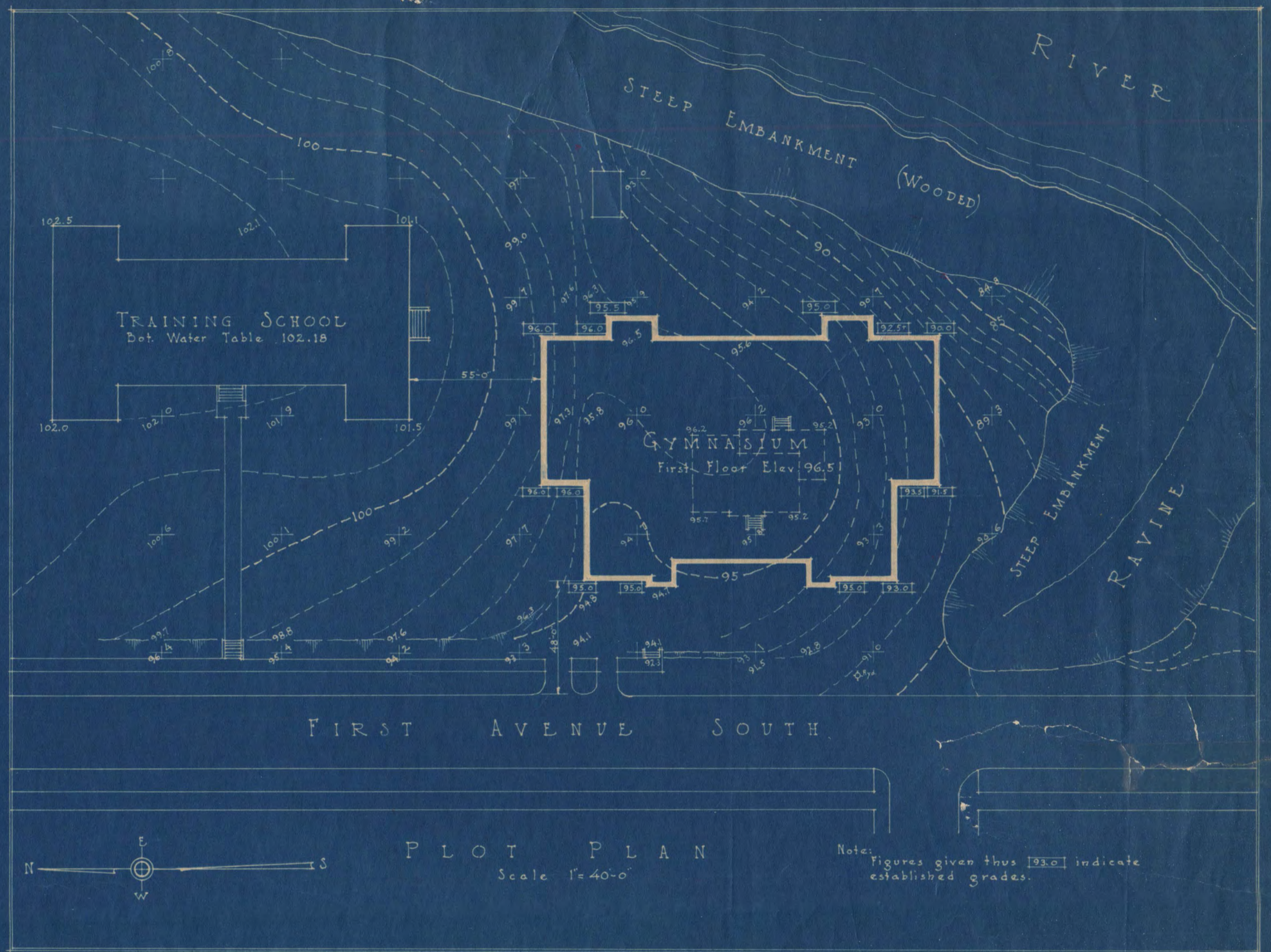
SECTION THRU  
WALL AT "B-B".  
Scale 1/2" = 1'-0"

PHYSICAL EDUCATION BUILDING  
STATE TEACHERS COLLEGE  
ST. CLOUD, MINNESOTA  
C. H. JOHNSTON - ARCHITECT  
ST. PAUL, MINNESOTA.

MADE BY J.P.M. TRACED BY J.P.M. CHECKED BY  
SCALE As Noted DATE Sept. 1929  
ORDER NO. 3259 SHEET NO. 10

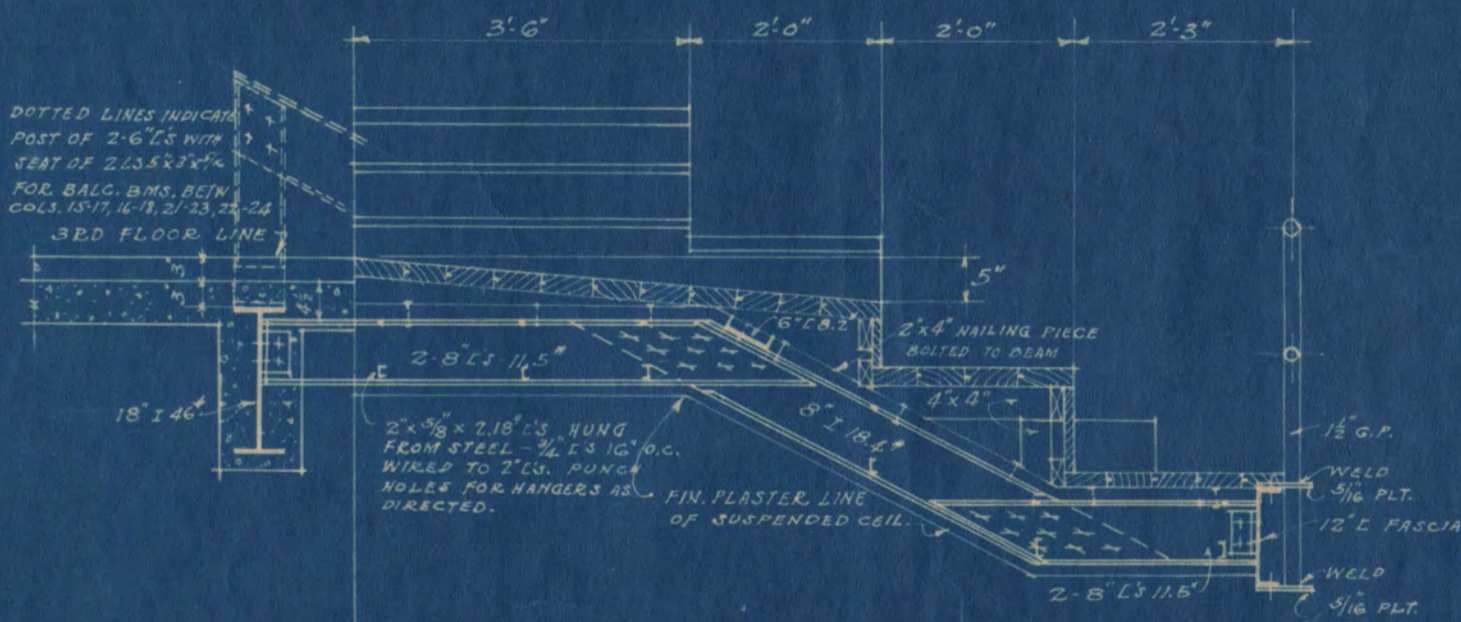


ROOF PLAN  
Scale 1/16" = 1'-0"

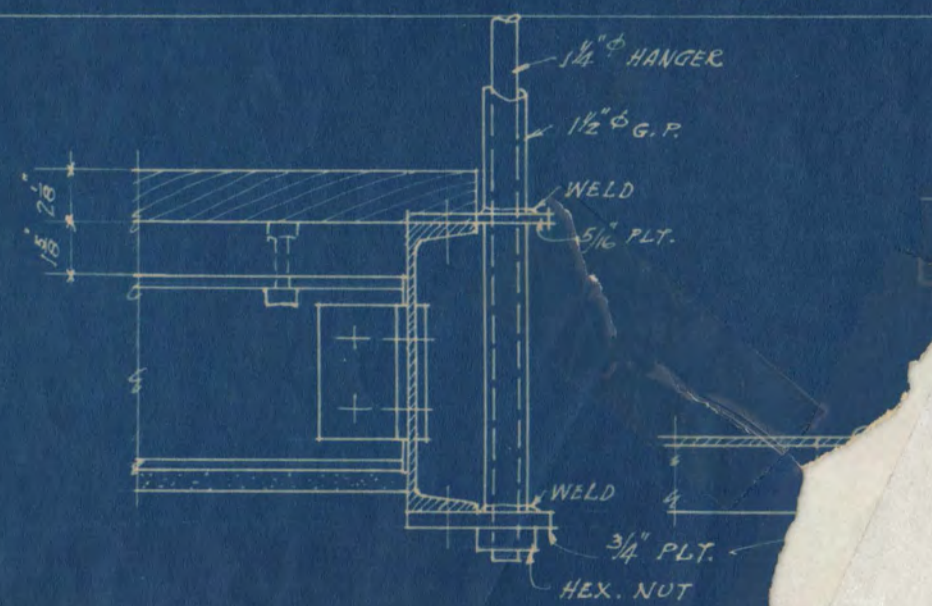


DETAILS OF SPANDEL BEAM OVER WINDOWS 311 TO 314 INCL.  
BEAM OVER WINDOWS 303 TO 306 INCL. REVERSE  
SCALE 1/2" = 1'-0"

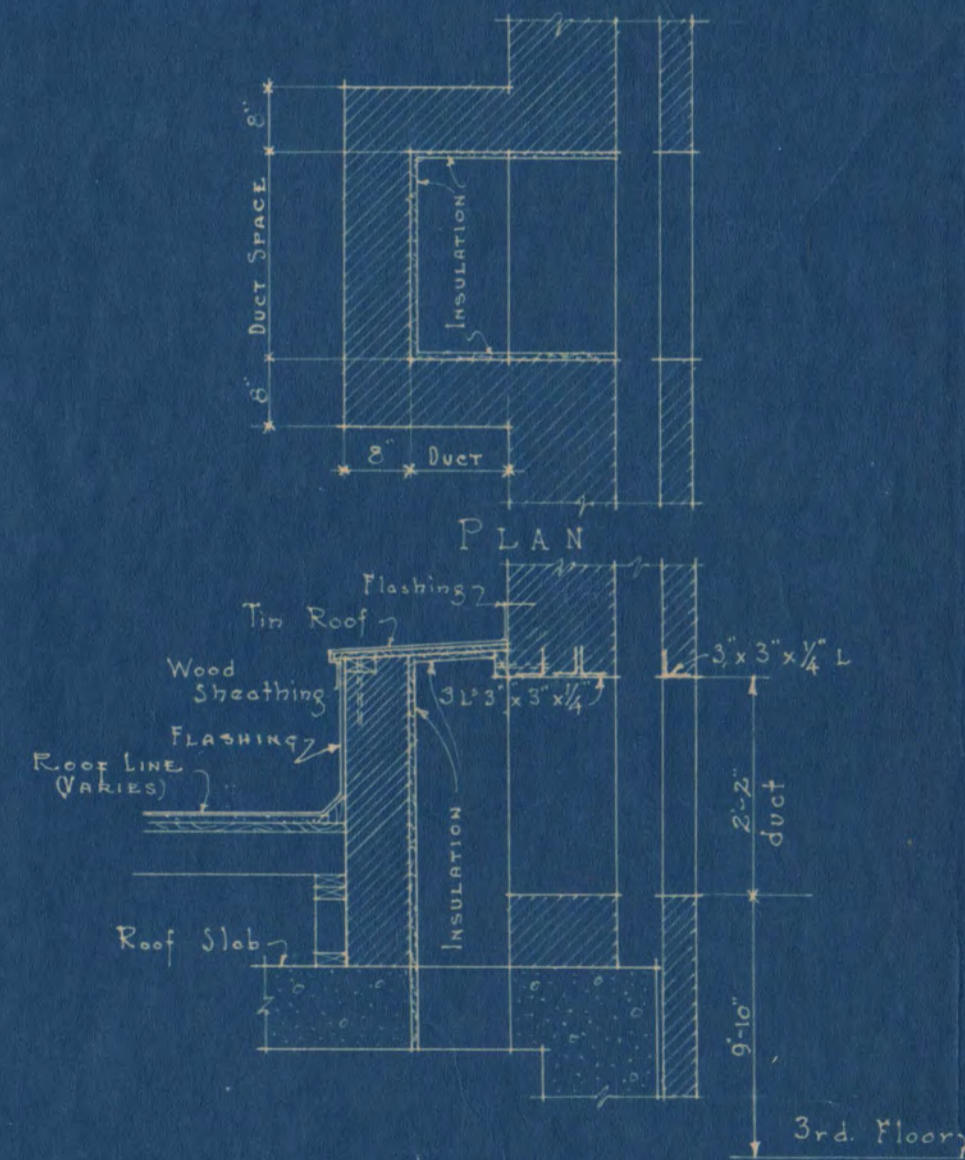
BEAMS OVER WINDOWS 106, 140, 206 AND 228 SIMILAR.



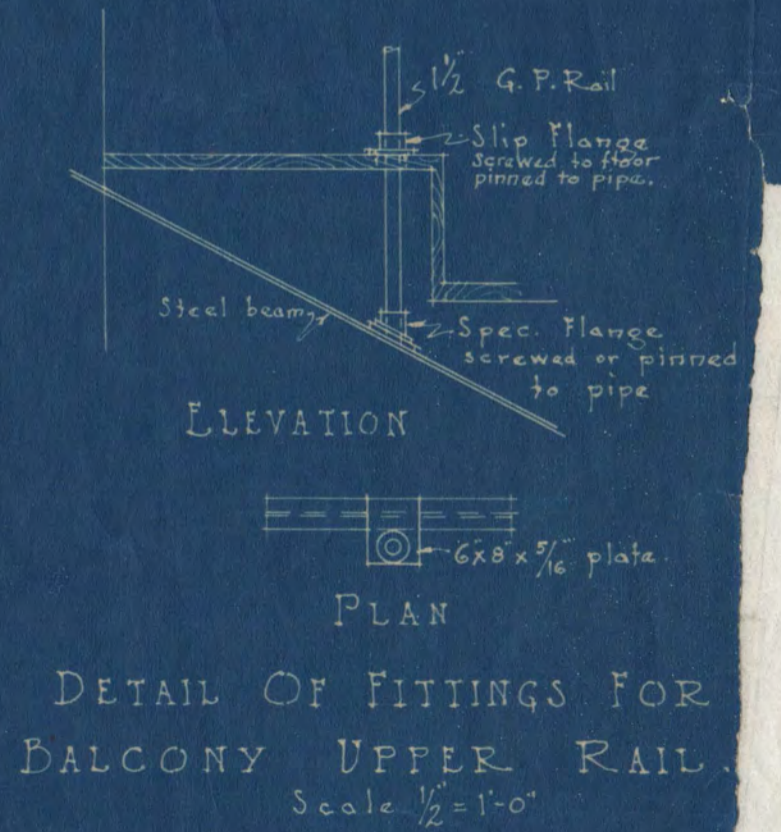
DETAIL OF BALCONY BEAMS AT  
ENTRANCE FROM 3RD FLOOR  
SCALE 1/2" = 1'-0"



DETAILS OF BALCONY HANGERS  
SCALE 3/4" = 1'-0"



SECTION  
DETAIL OF HOUSING OVER  
GYMNASIUM FRESH AIR DUCT OVER  
BALCONY  
Scale 1/2" = 1'-0"



PHYSICAL EDUCATION  
STATE TEACHERS  
ST. CLOUD,  
C. H. JOHNSTON  
ST. PAUL

MAD: G.W.D. GELTRACED BY  
SCALE: As Noted  
ORDER NO. 3259