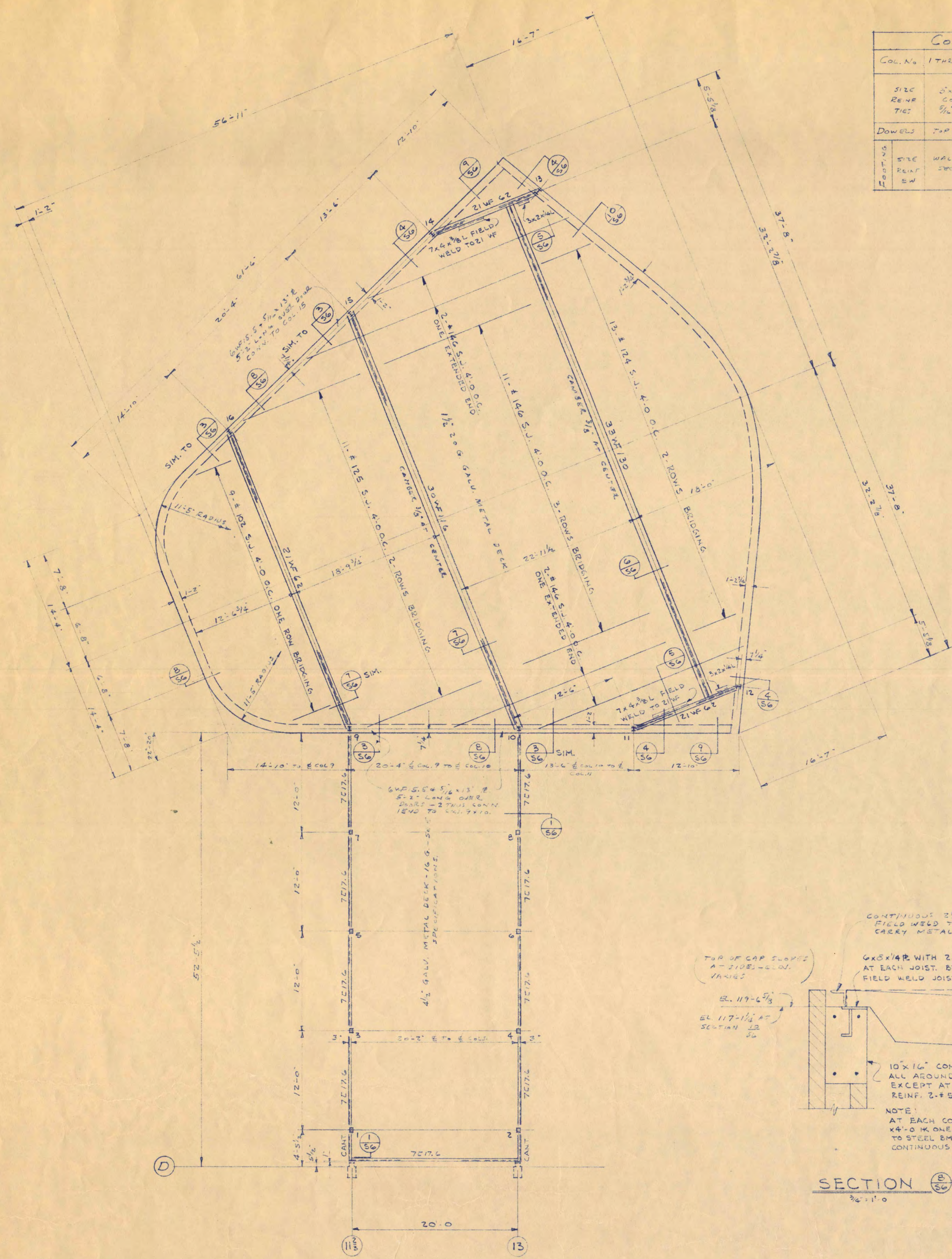
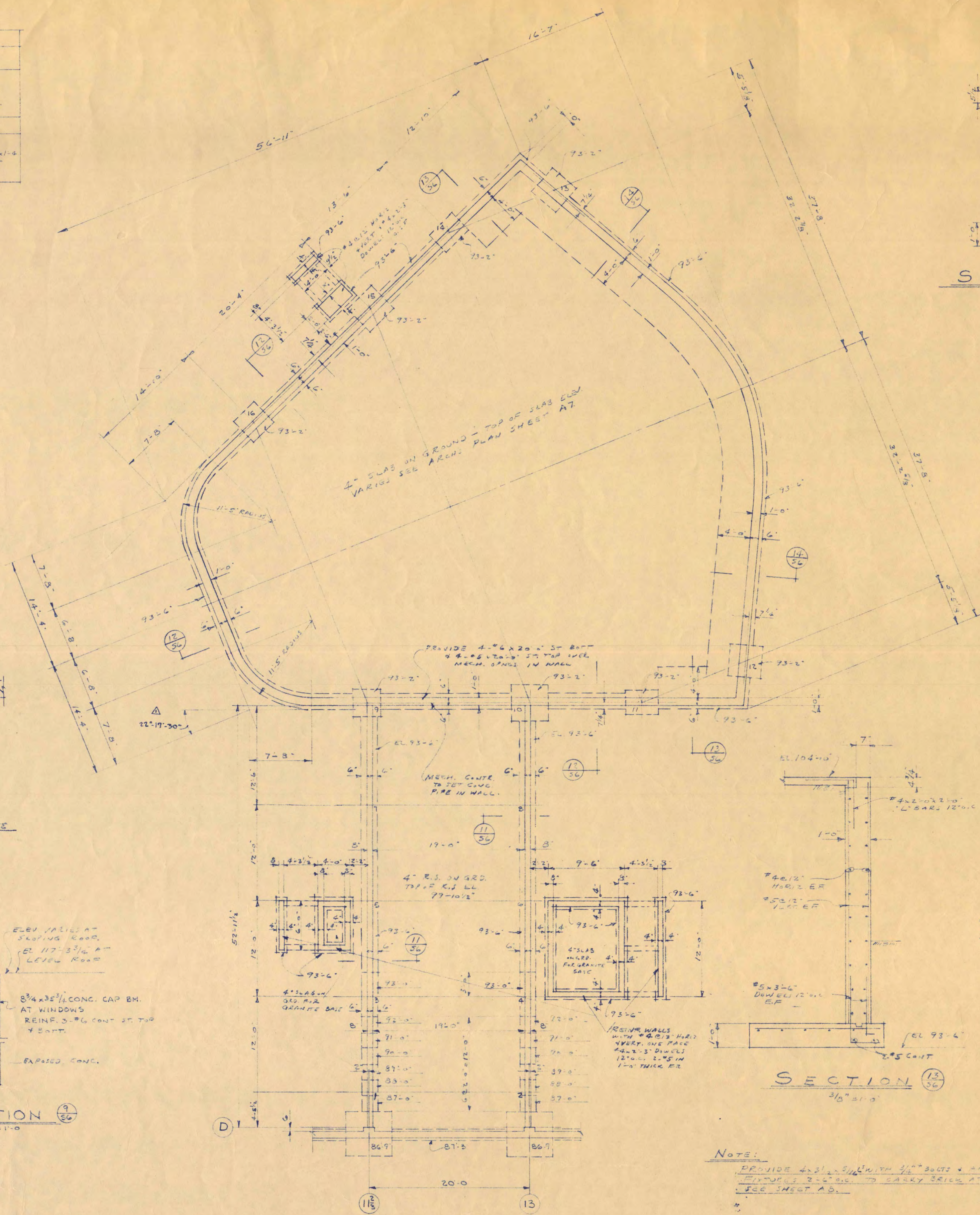


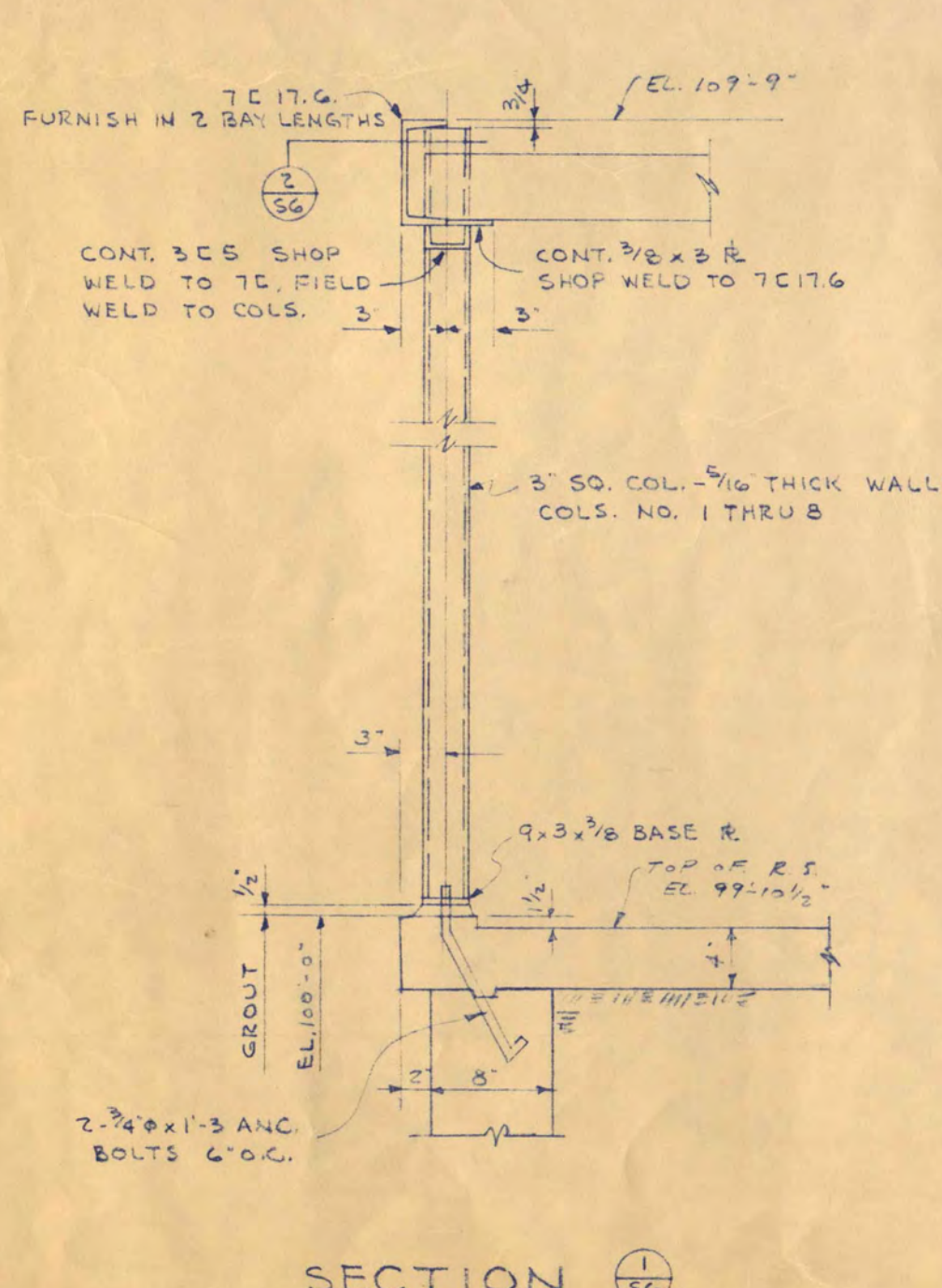
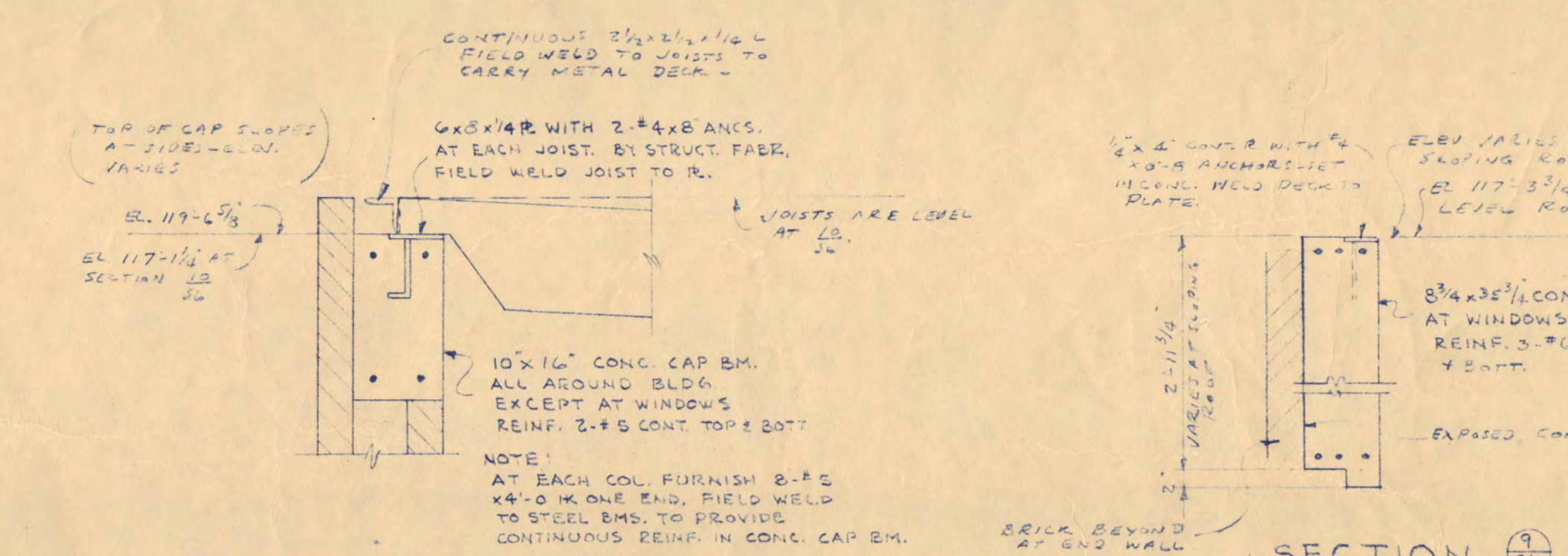
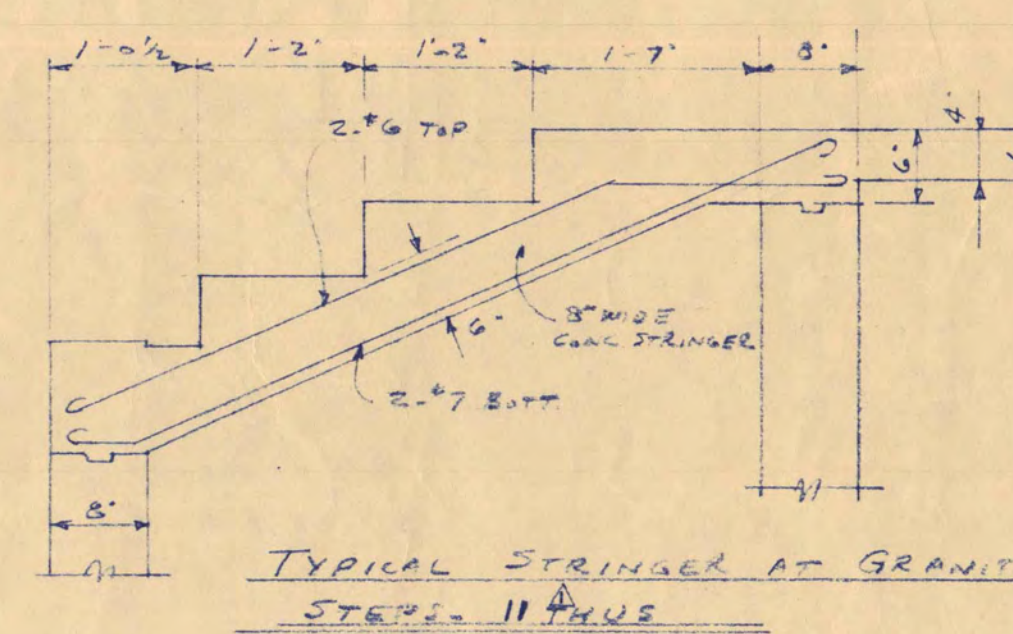
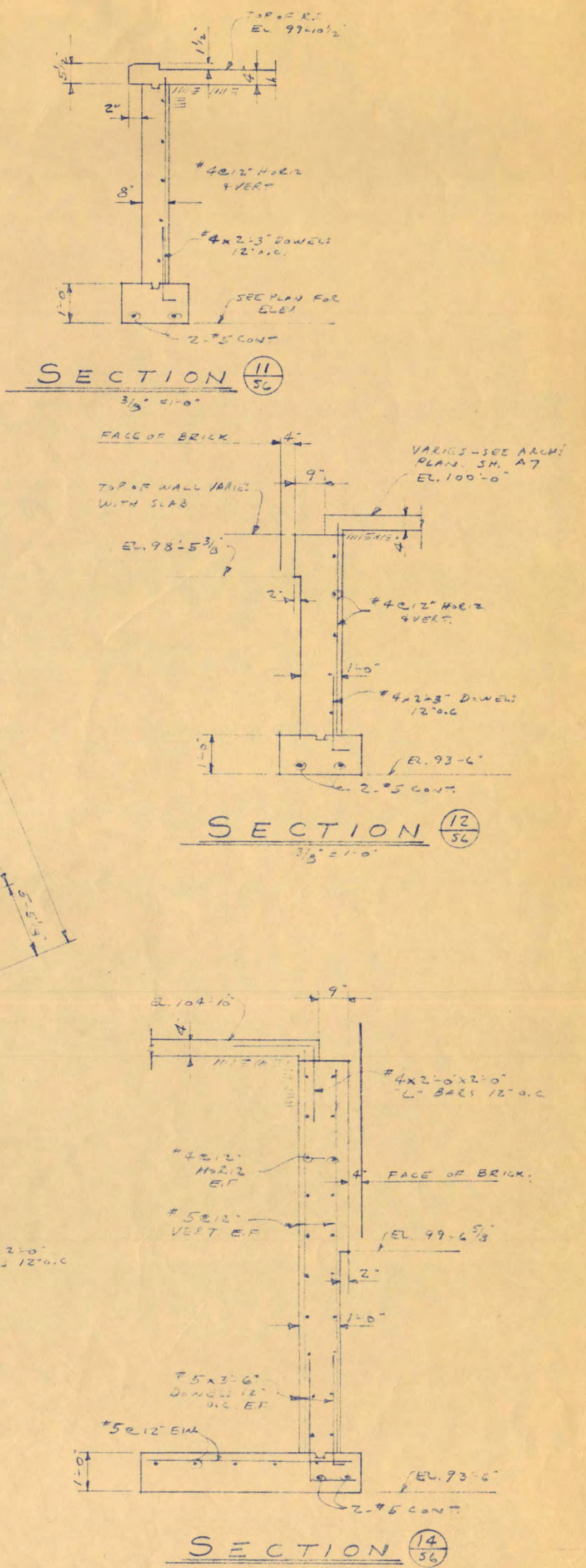
COLUMN AND FOOTING SCHEDULE						
Col. No.	17x10	9-12	10	11-12	12-13	15
FILE	21x29	18x18	18x18	18x18	18x18	18x18
BASE	CONC.	4-7/8	4-7/8	4-7/8	4-7/8	4-7/8
FOOT	CONC.	4-7/8	4-7/8	4-7/8	4-7/8	4-7/8
DOWN	CONC.	4-7/8	4-7/8	4-7/8	4-7/8	4-7/8
STRE	WALLEN	3-1/2x3-1/2	4-1/2x4-1/2	3-1/2x3-1/2	3-1/2x3-1/2	3-1/2x3-1/2
PLAN	CONC.	7-5/8	9-5/8	7-5/8	5-5/8	5-5/8



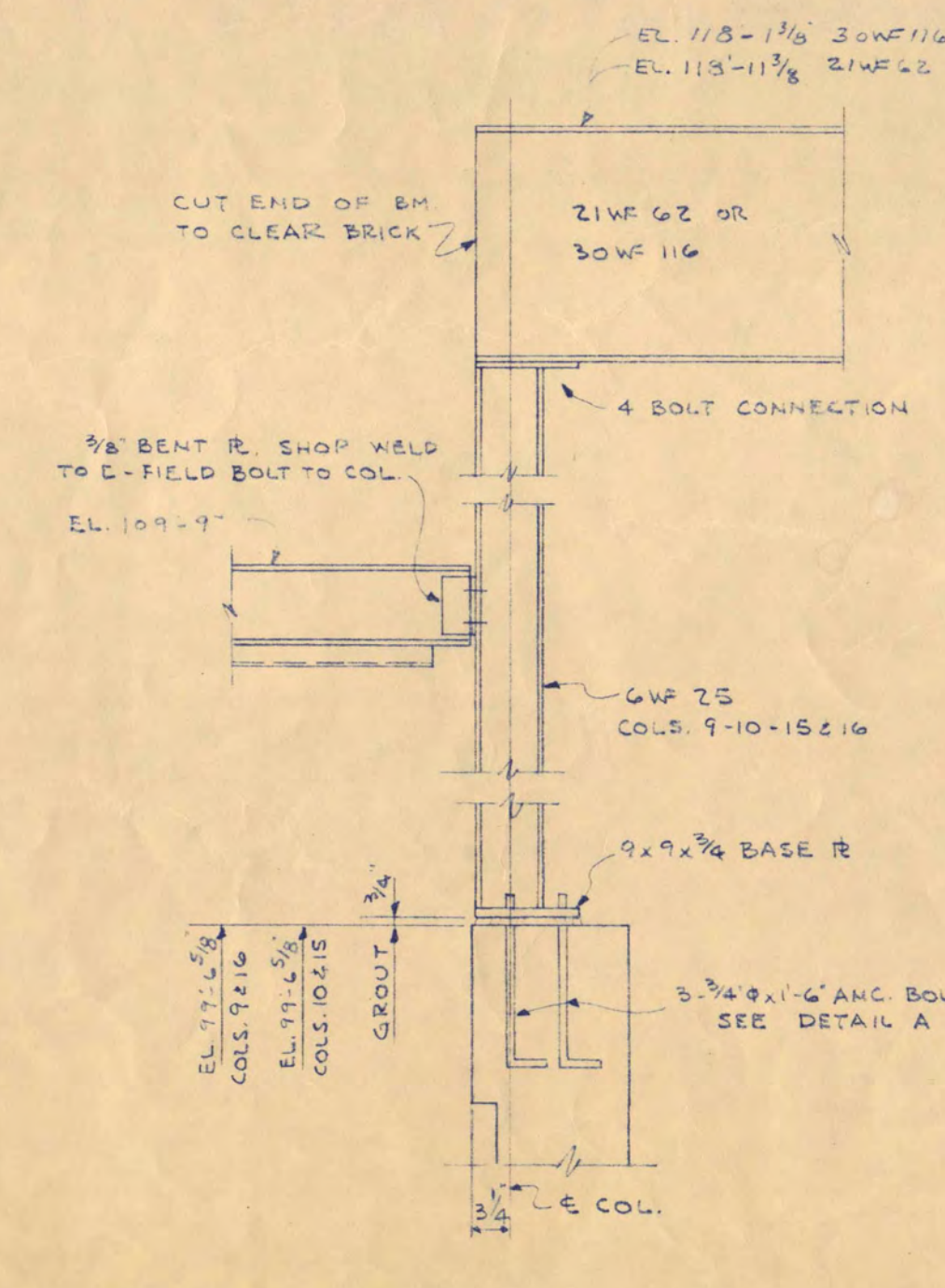
AUDITORIUM ROOF FRAMING PLAN
1/8" = 1'-0"



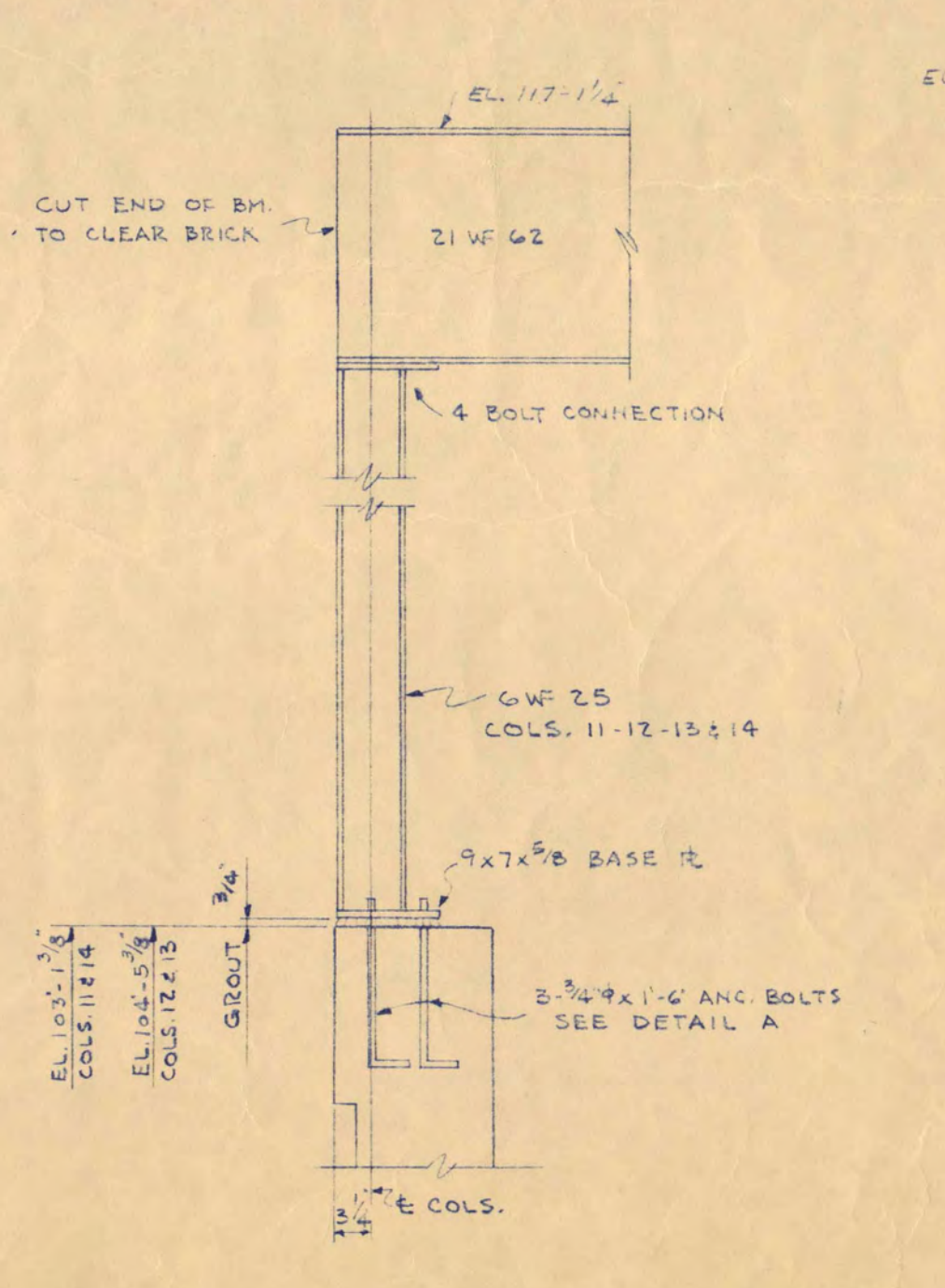
AUDITORIUM FOUNDATION PLAN
1/8" = 1'-0"



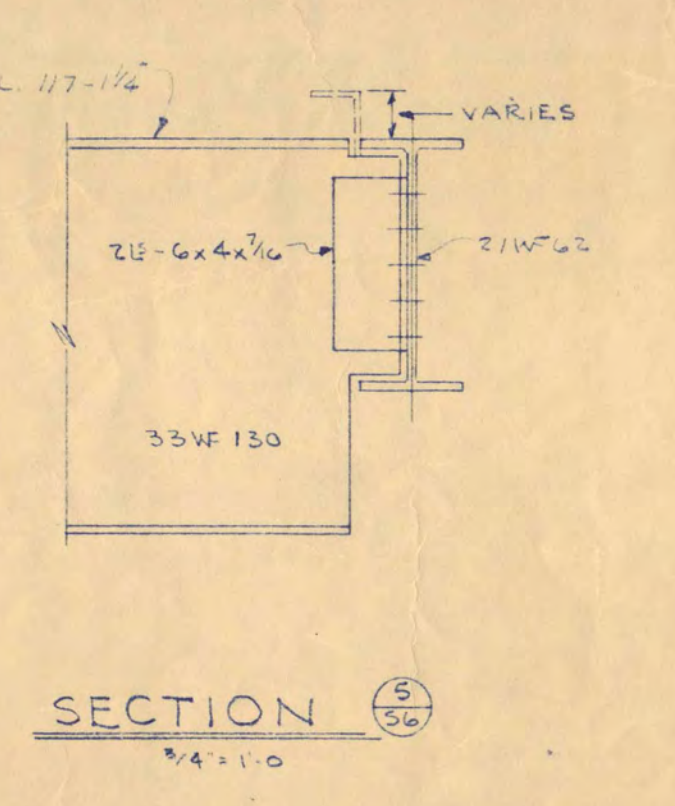
SECTION 18
1/4" = 1'-0"



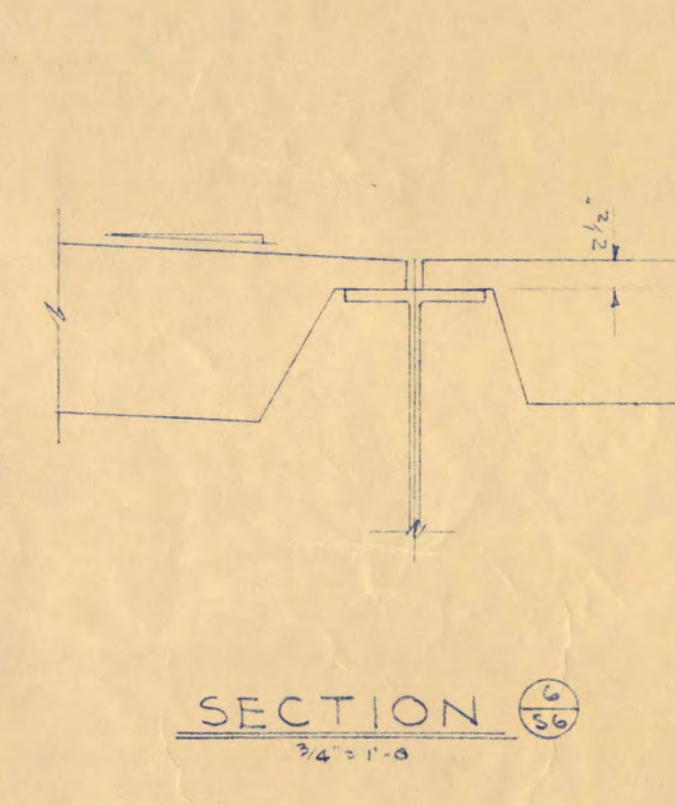
SECTION 19
3/4" = 1'-0"



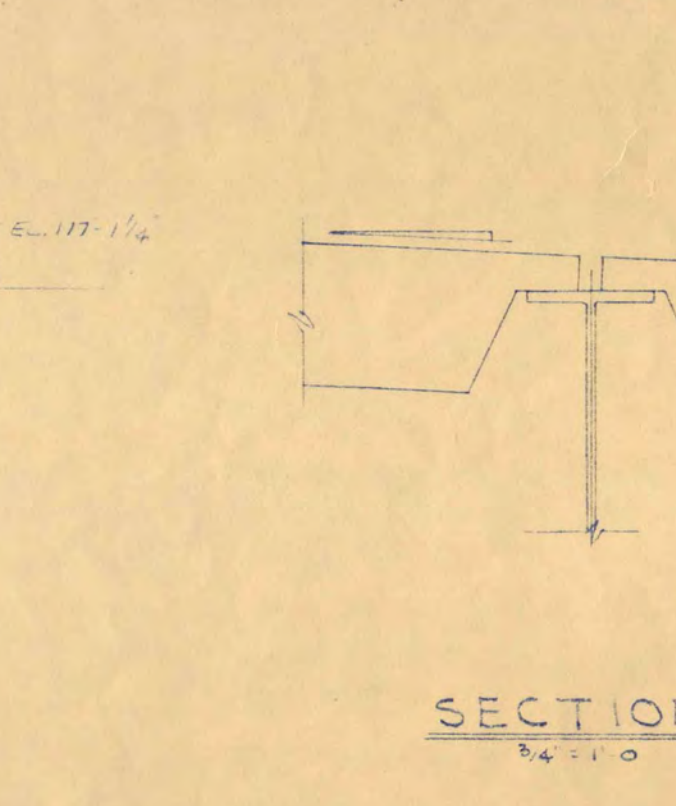
SECTION 20
3/4" = 1'-0"



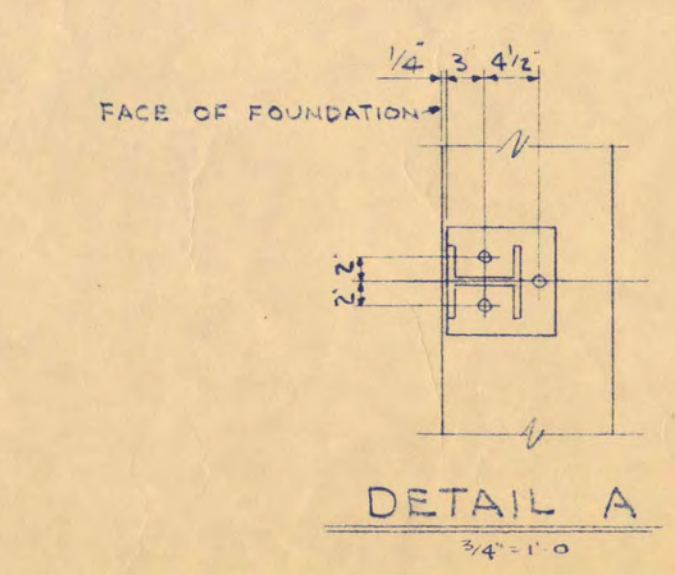
SECTION 21
3/4" = 1'-0"



SECTION 22
3/4" = 1'-0"



SECTION 23
3/4" = 1'-0"



DETAIL A
3/4" = 1'-0"

NOTE:
PROVIDE 4-#4 BARS WITH 12" BENDS & ANCHORS INTO SLAB.
REINFORCE 2-#4 BARS TO CARRY BRICK AT FOUNDATION WALLS.
SEE SHEET A-6.

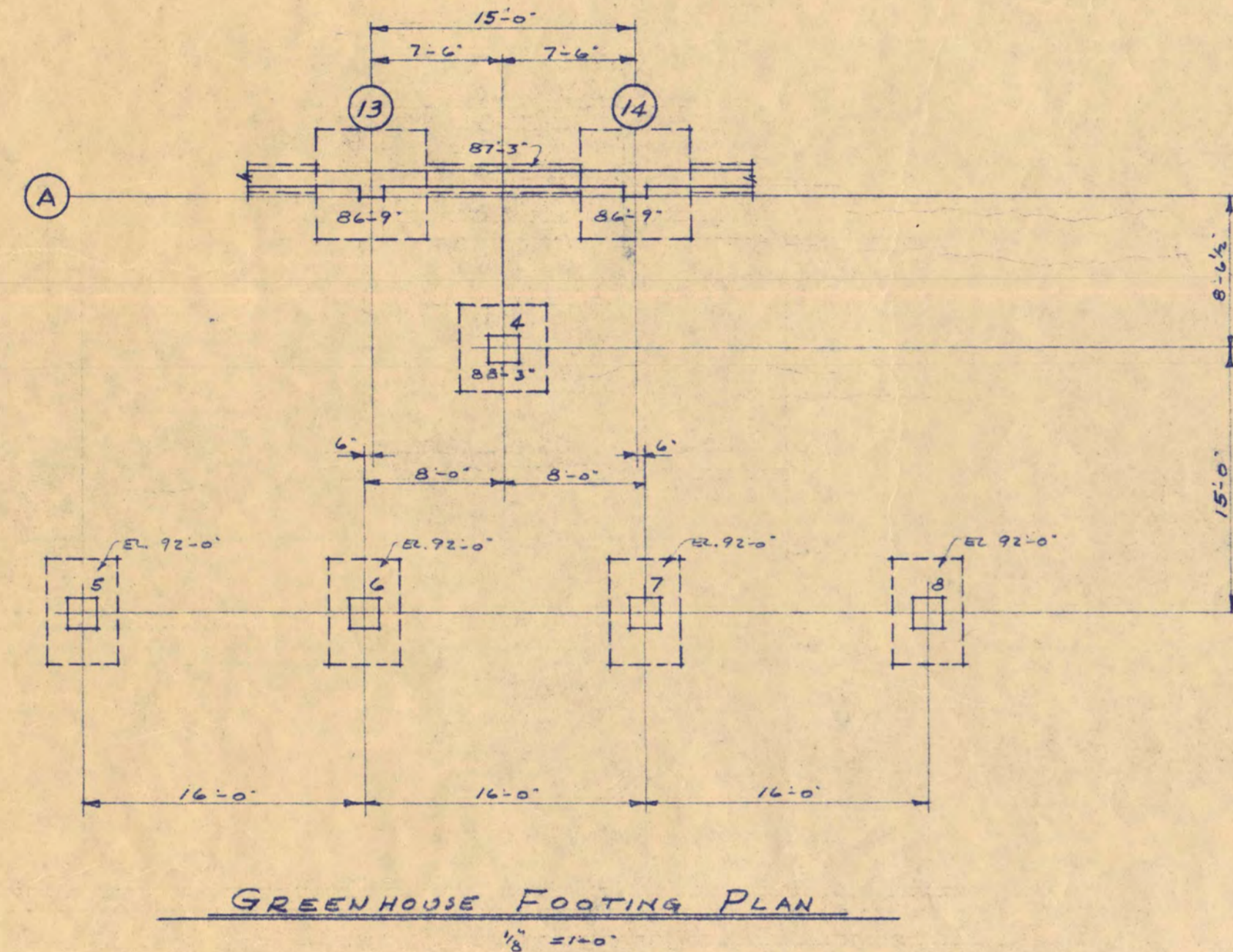
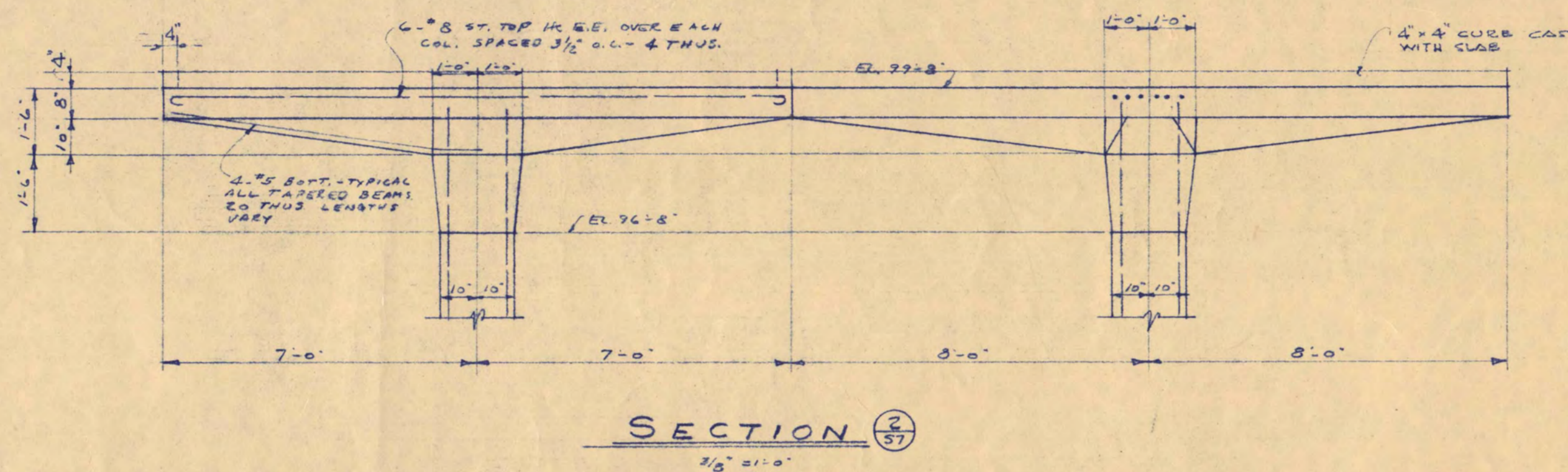
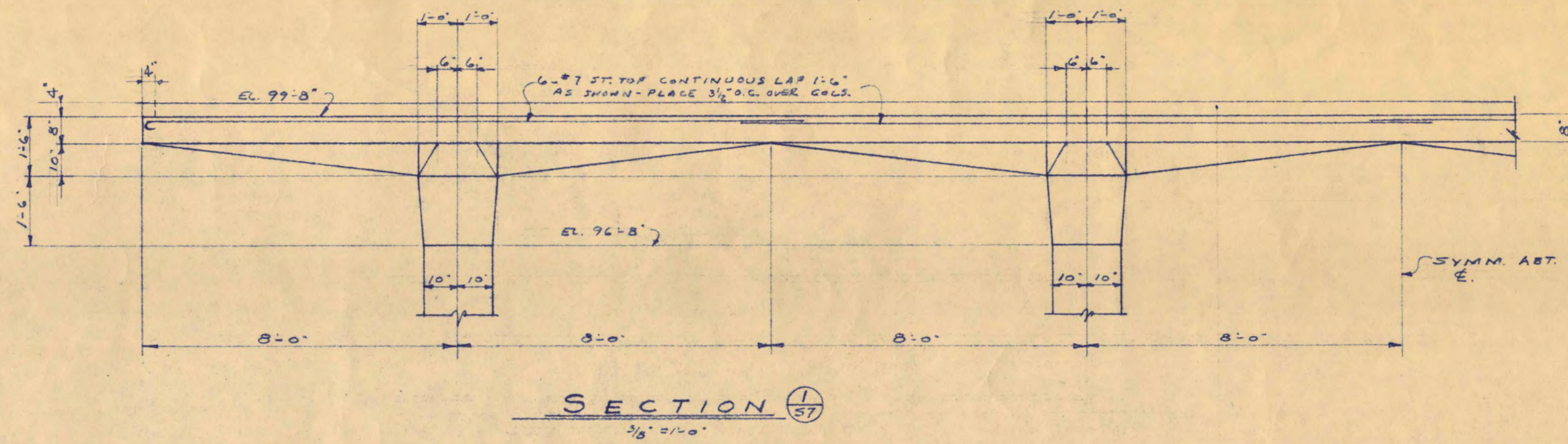
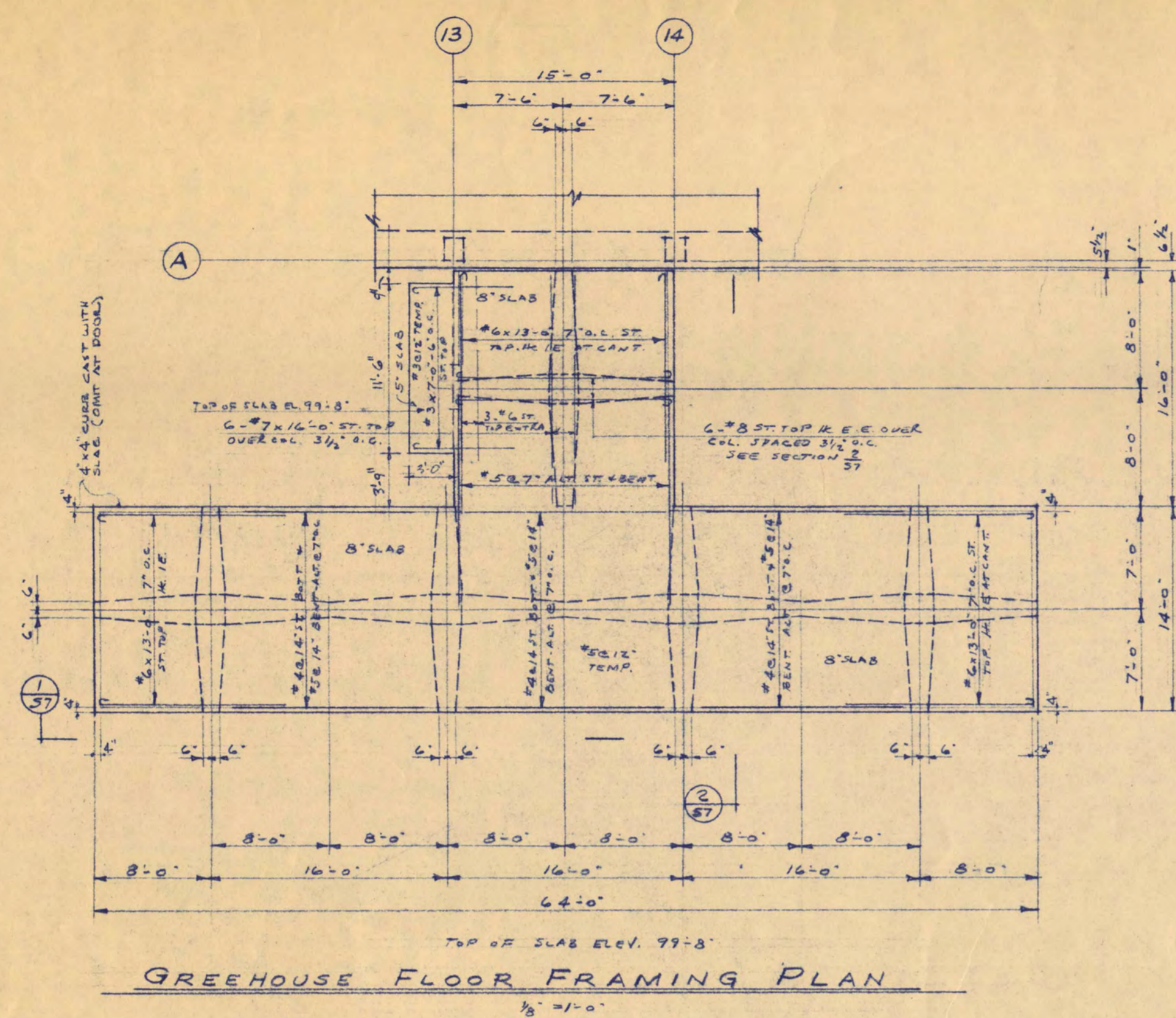
SCIENCE AND MATHEMATICS BUILDING
ST. CLOUD STATE COLLEGE
ST. CLOUD, MINNESOTA

DEPARTMENT OF ADMINISTRATION
ROOM 120 STATE CAPITOL BUILDING
ARCHITECTURAL AND ENGINEERING DIVISION
ST. PAUL, MINNESOTA

A.J. NELSON, STATE ARCHITECT

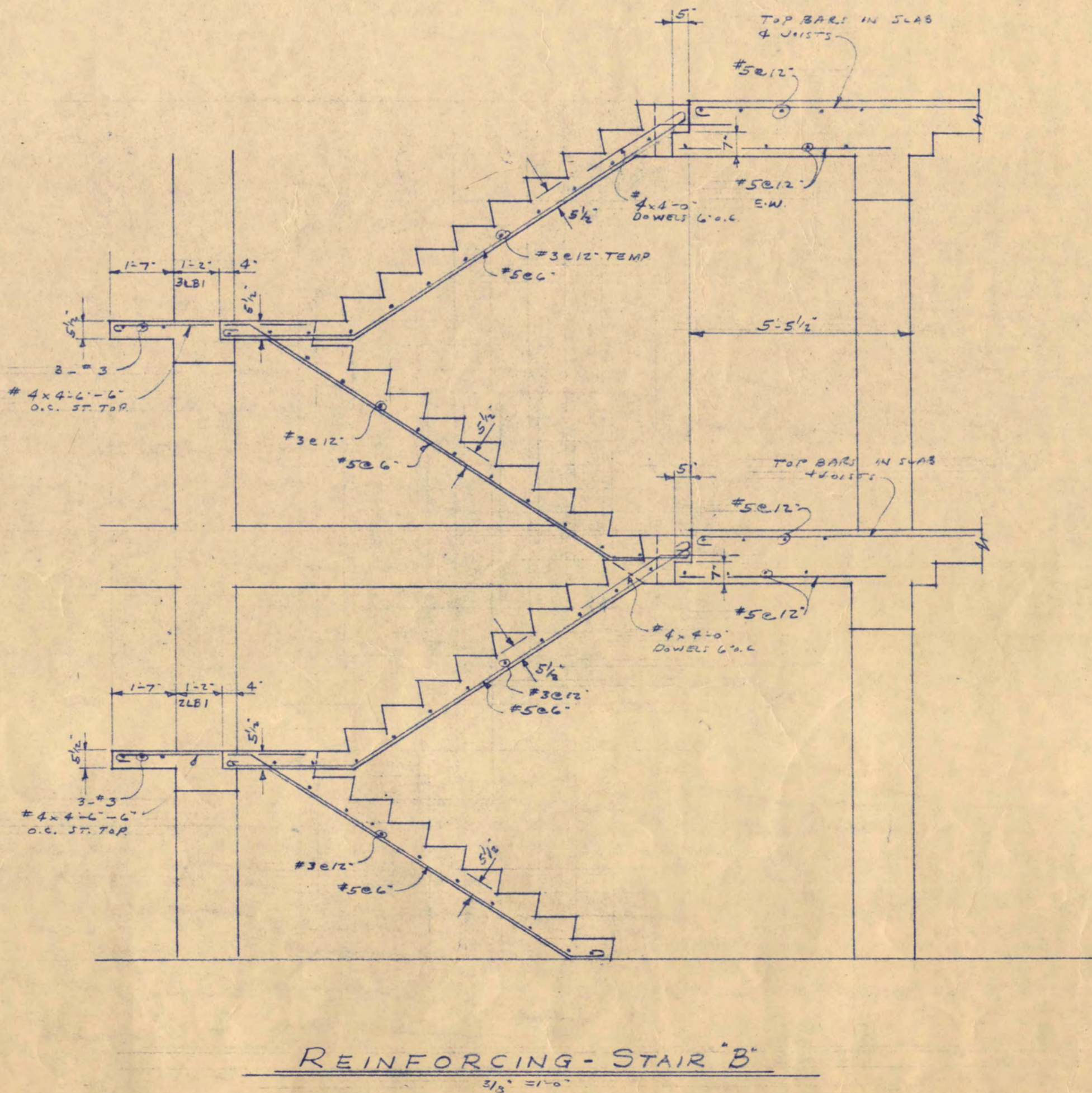
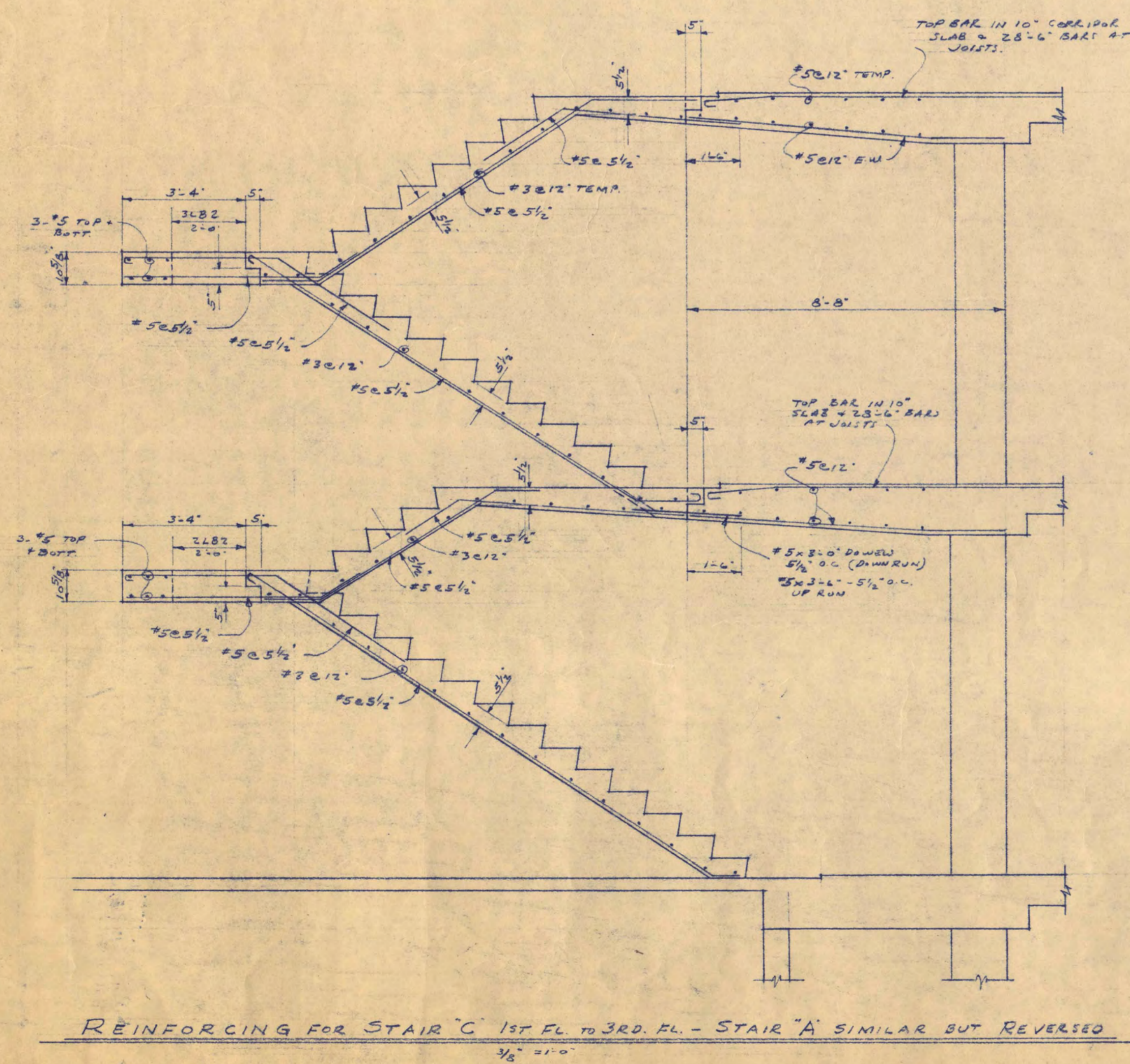
TRAYNOR AND HERMANSON, ARCHITECTS
ST. CLOUD, MINN.
GAUSMAN AND MOORE, INC. CONSULTING ENGINEERS
ST. PAUL, MINN.
JOHNSTON BARKER CO. STRUCTURAL ENGINEERS
WINNEBAGO, MINN.

DATE	7-18-58	SHEET NO.	58-6
REVISED	8-23-58	APPROVED BY	PRESIDENT BY CLOUD STATE COLLEGE
DRAWN BY	W.S.C.D.	APPROVED BY	STATE COLLEGE BOARD
CHECKED BY		APPROVED BY	COMMISSIONER OF ADMINISTRATION AN AUTHORIZED SIGNATURE



COLUMN & FOOTING SCHEDULE		
COL. No.	4	5, 6, 7, 8
PIPE	20 x 20	20 x 20
REINFC	8-#7	8-#7
TIES	#3 @ 16" O.C.	#3 @ 16" O.C.
DOWELS	12-#7	12-#7
FOOTING	3'-0" x 8'-0"	3'-0" x 8'-6"
REINFC	8-#5	8-#5-6
REINFC	8-#5	6-#5-6

BRIDGE #5 @ 12" O.C. E.W. IN ALL FTGS.



SCIENCE AND MATHEMATICS BUILDING
ST. CLOUD STATE COLLEGE
ST. CLOUD, MINNESOTA

DEPARTMENT OF ADMINISTRATION
ROOM 120 STATE CAPITOL BUILDING
ARCHITECTURAL AND ENGINEERING DIVISION

STATE OF MINNESOTA
ST. PAUL, MINNESOTA

A.J. NELSON, STATE ARCHITECT

TRAYNOR AND HERMANSON, ARCHITECTS
RAIBMAN AND MOORE, INC. CONSULTING ENGINEERS
JOHNSTON SAILMAN CO. STRUCTURAL ENGINEERS

ST. CLOUD, MINN.
ST. PAUL, MINN.
MINNEAPOLIS, MINN.

DATE: 7-18-58

APPROVED BY: PRESIDENT ST. CLOUD STATE COLLEGE

REVISION: 4-15-58

APPROVED BY: STATE COLLEGE BOARD

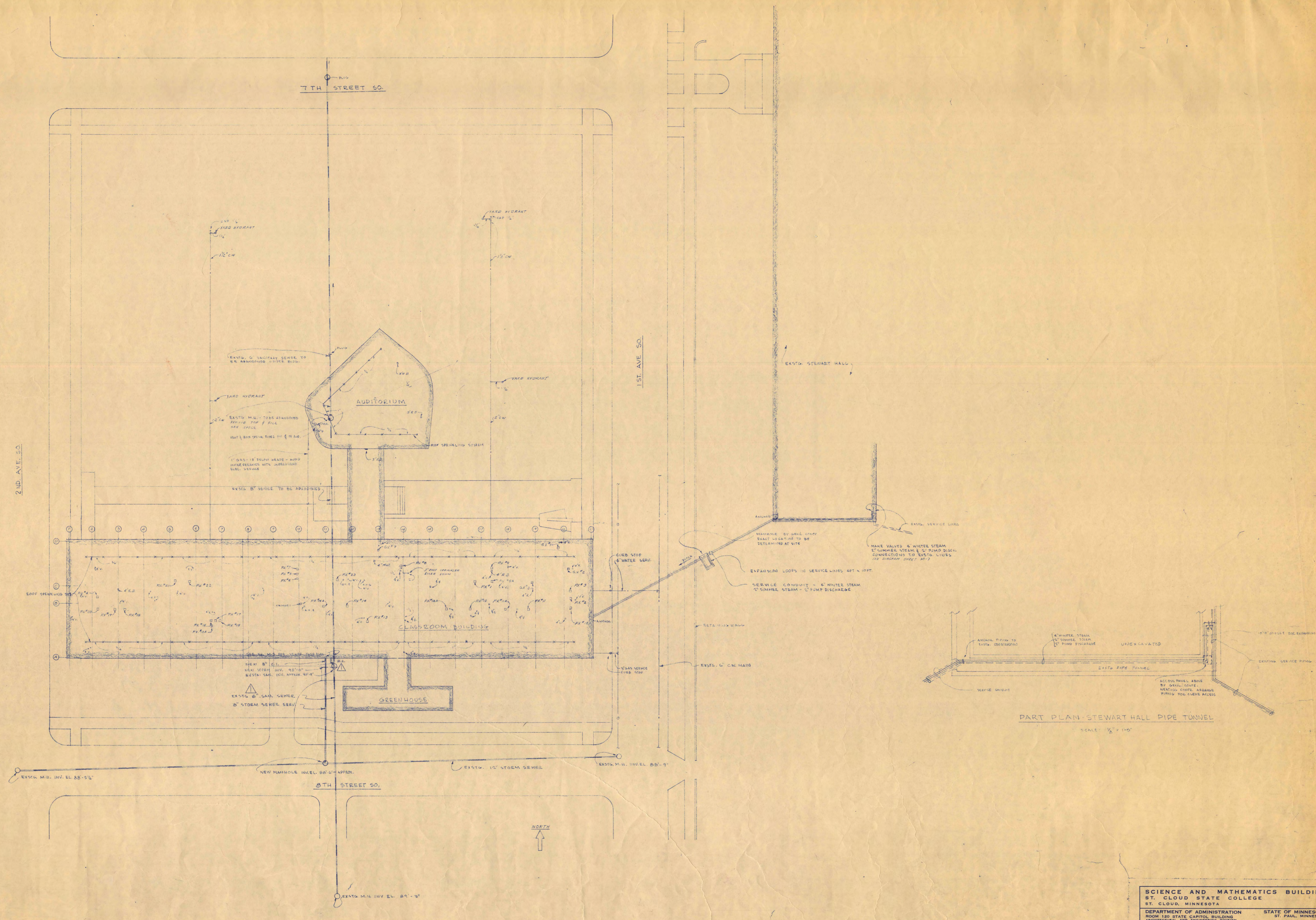
DRAWN BY: J.W.S.

CHECKED BY: COMMISSIONER OF ADMINISTRATION

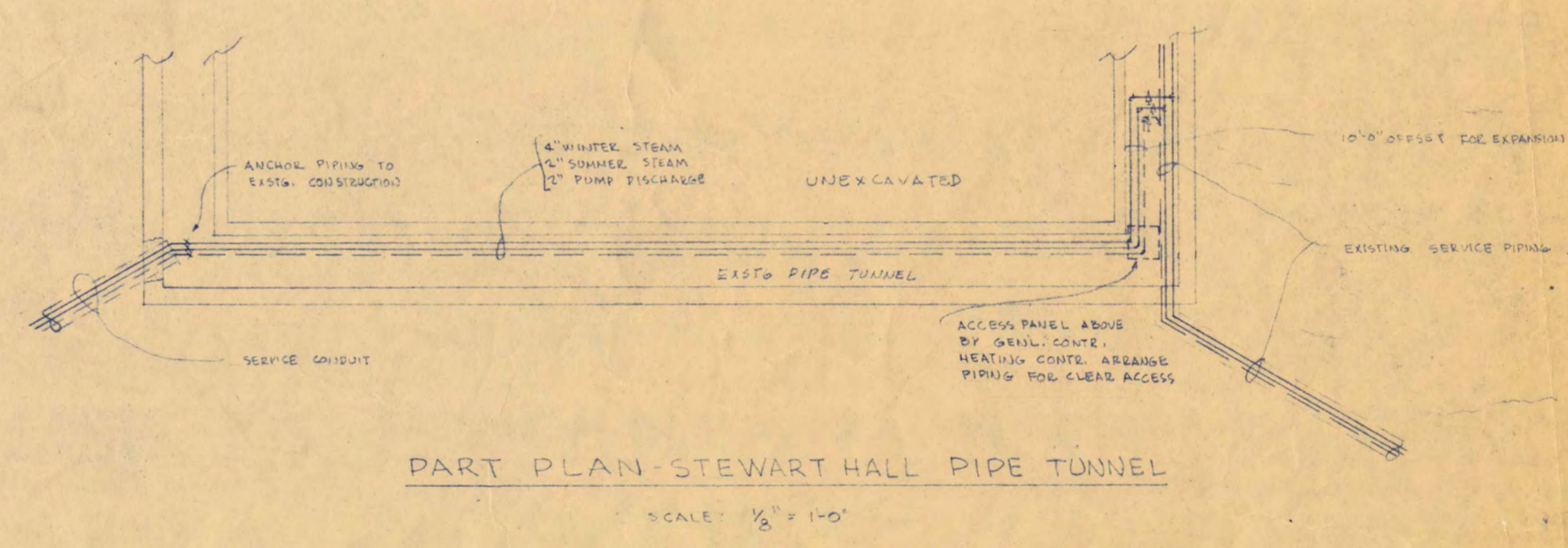
AN AUTHORIZED SIGNATURE

SHEET NO. S-7 OF 7

STATE PROJECT NUMBER 2600



PLOT PLAN
SCALE 1" = 10'-0"

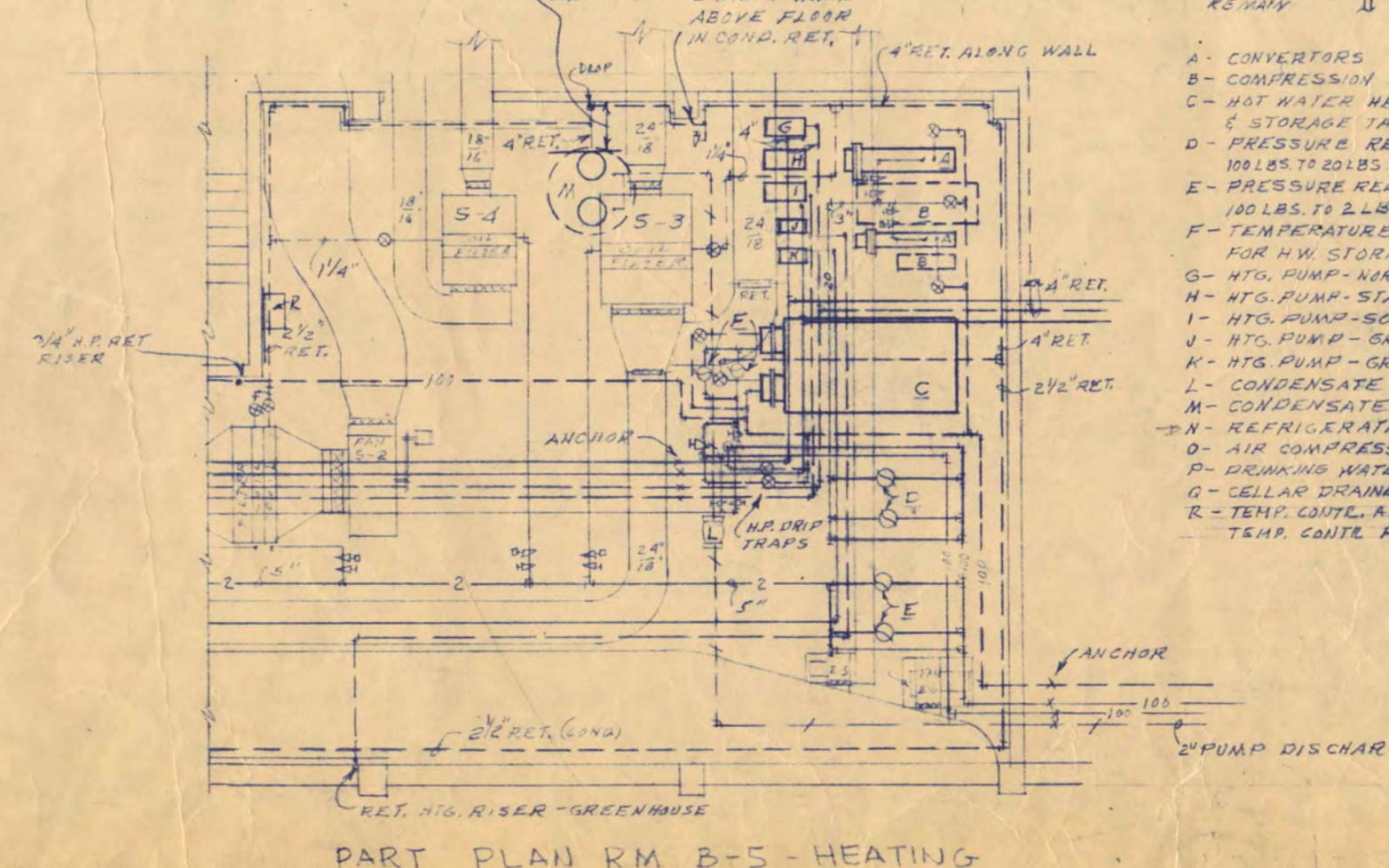
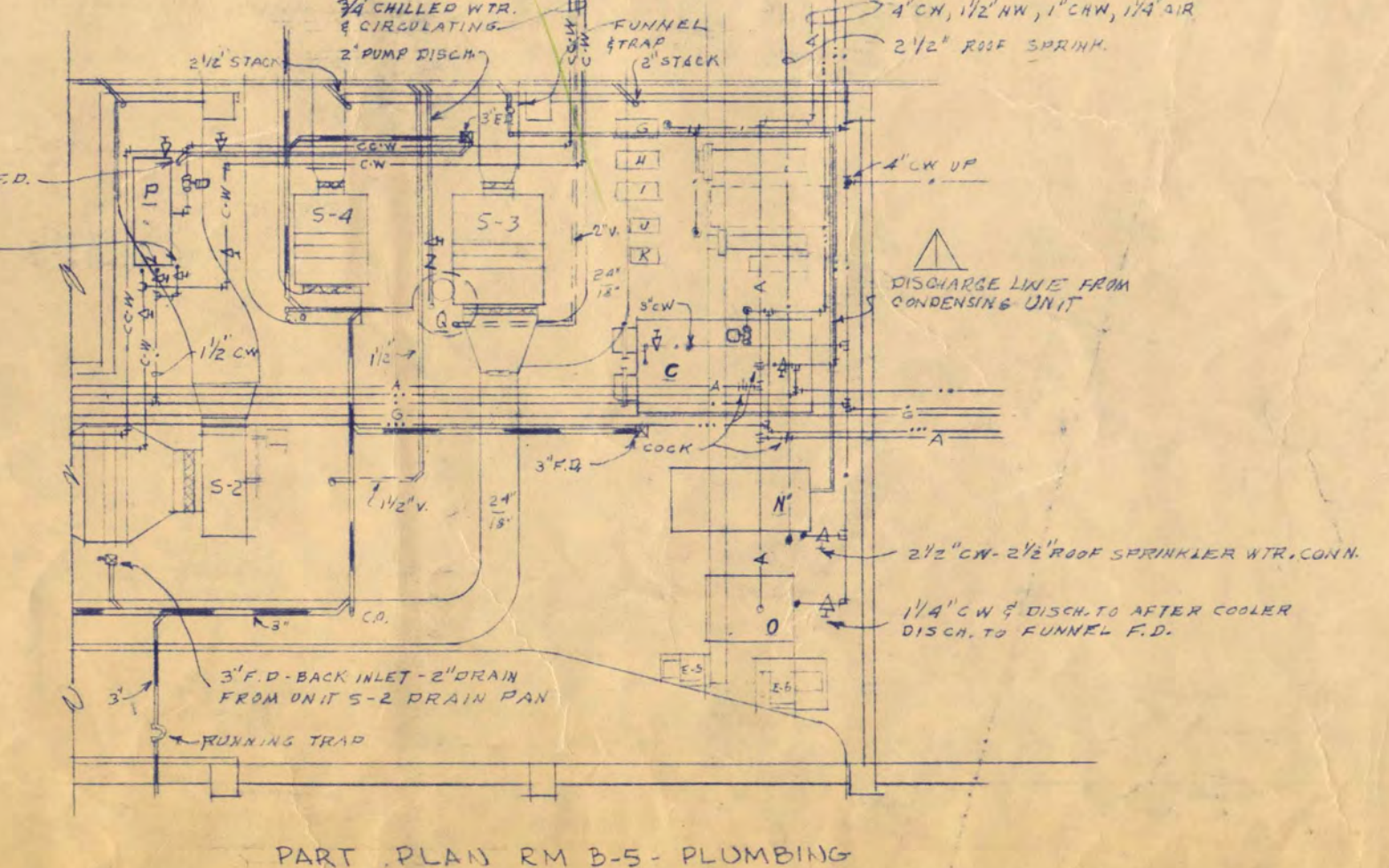
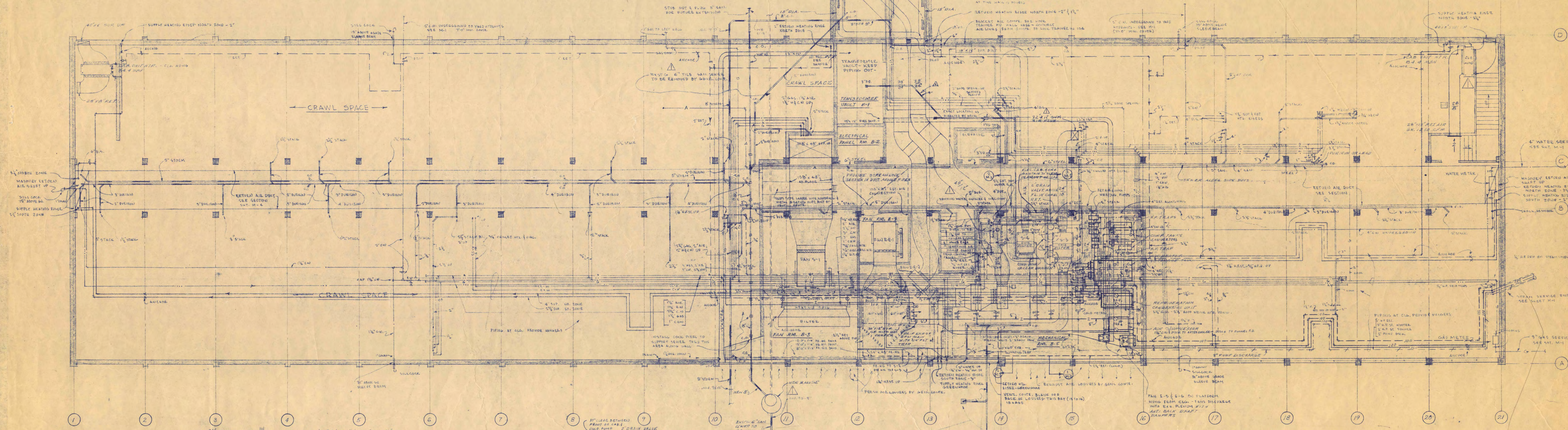
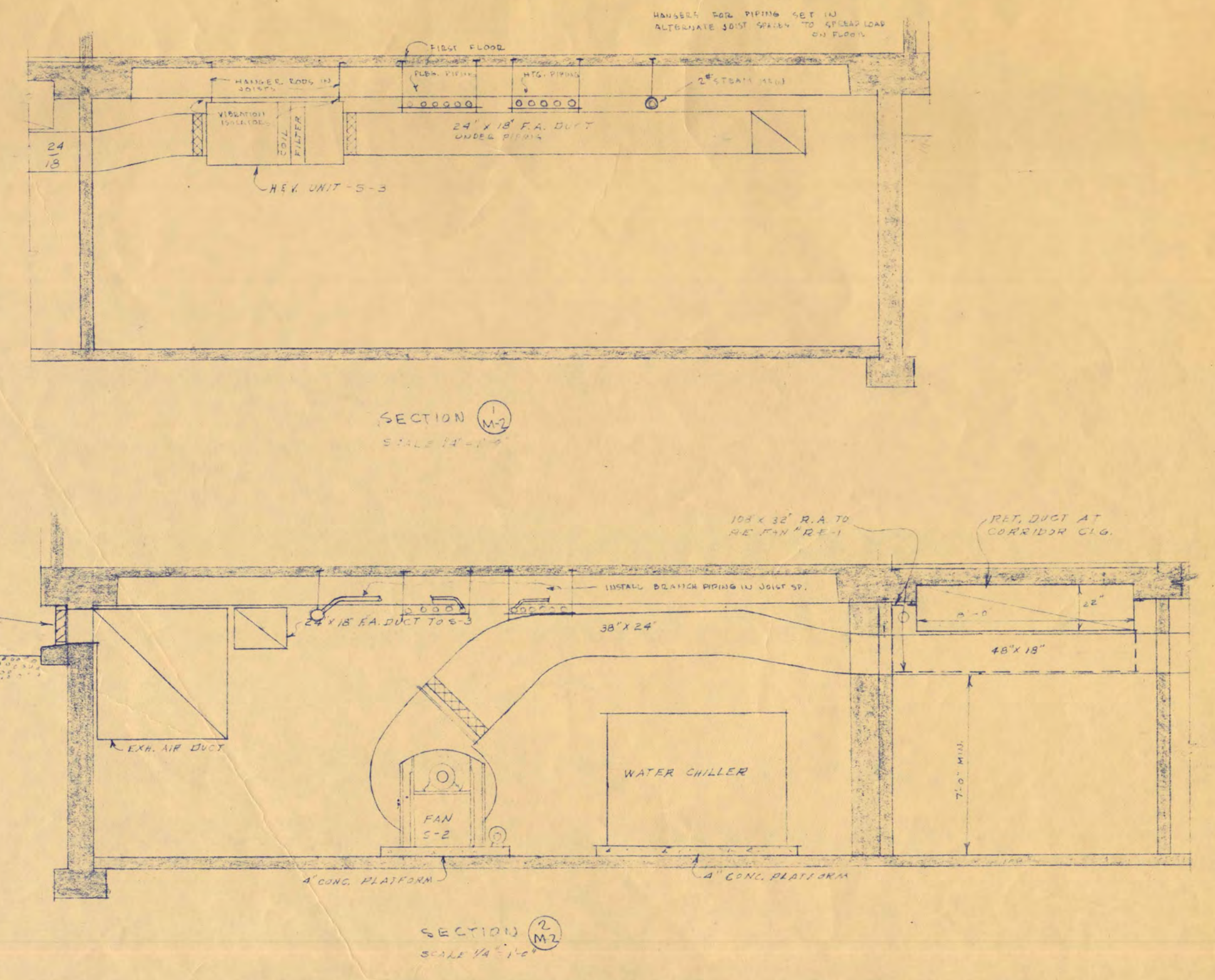
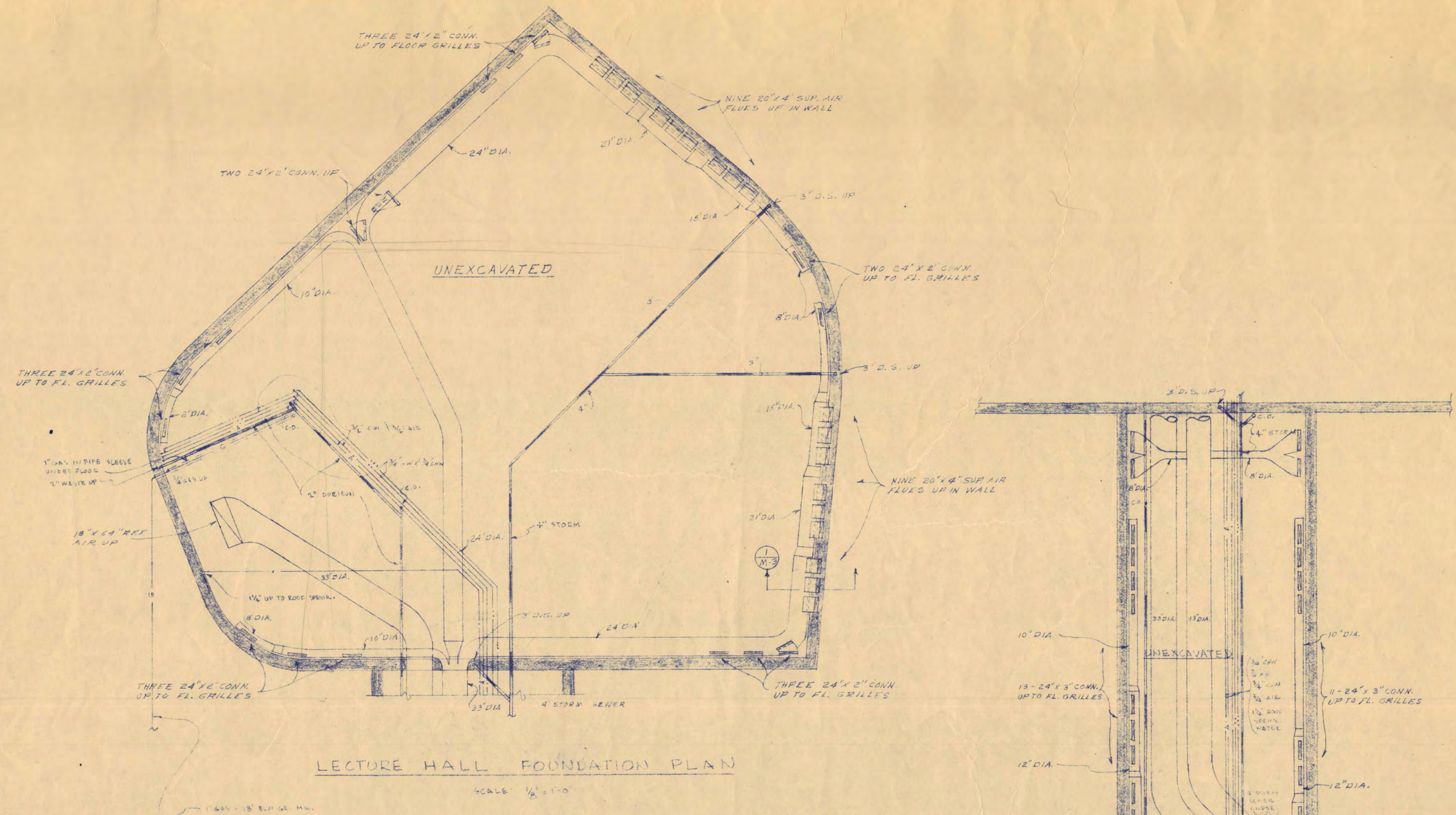


PART PLAN STEWART HALL PIPE TUNNEL
SCALE: 1/2" = 1'-0"

I hereby certify that this plan, specification, or report was prepared by me or under my direct supervision and that I am a duly Registered Professional Engineer under the laws of the State of Minnesota.

A.J. Nelson
Date July 18, 1958 - Reg. No. 1011

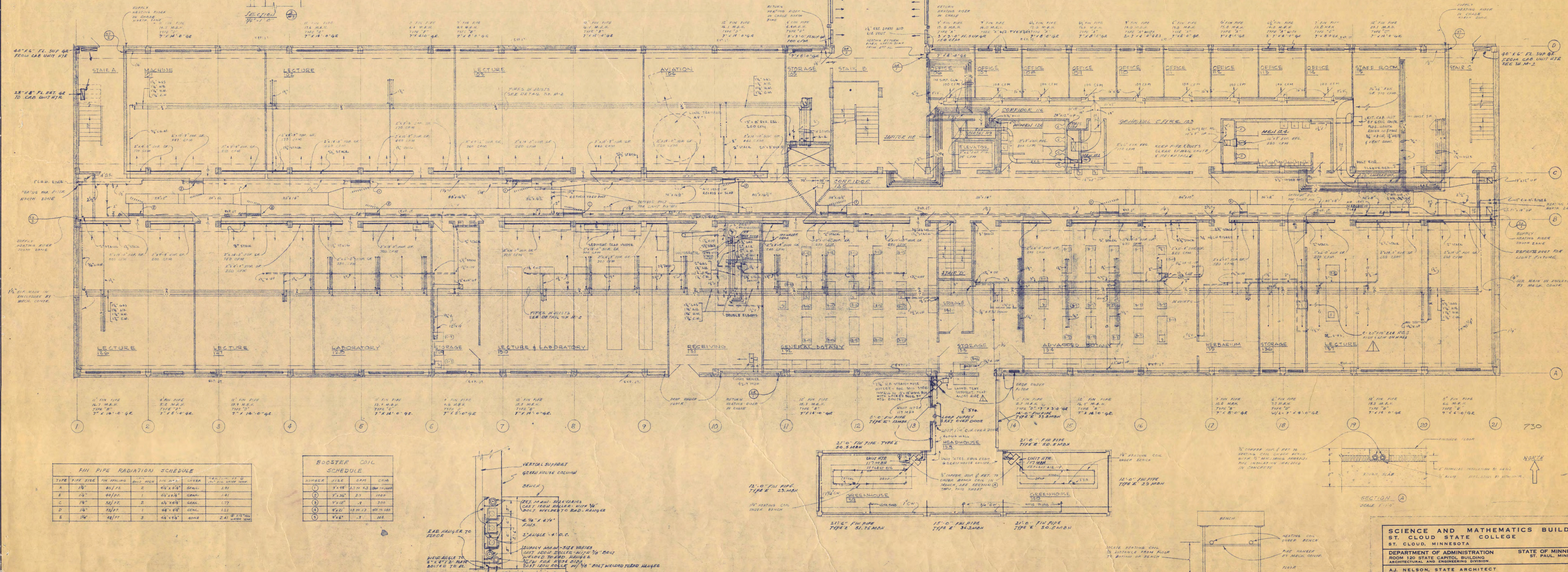
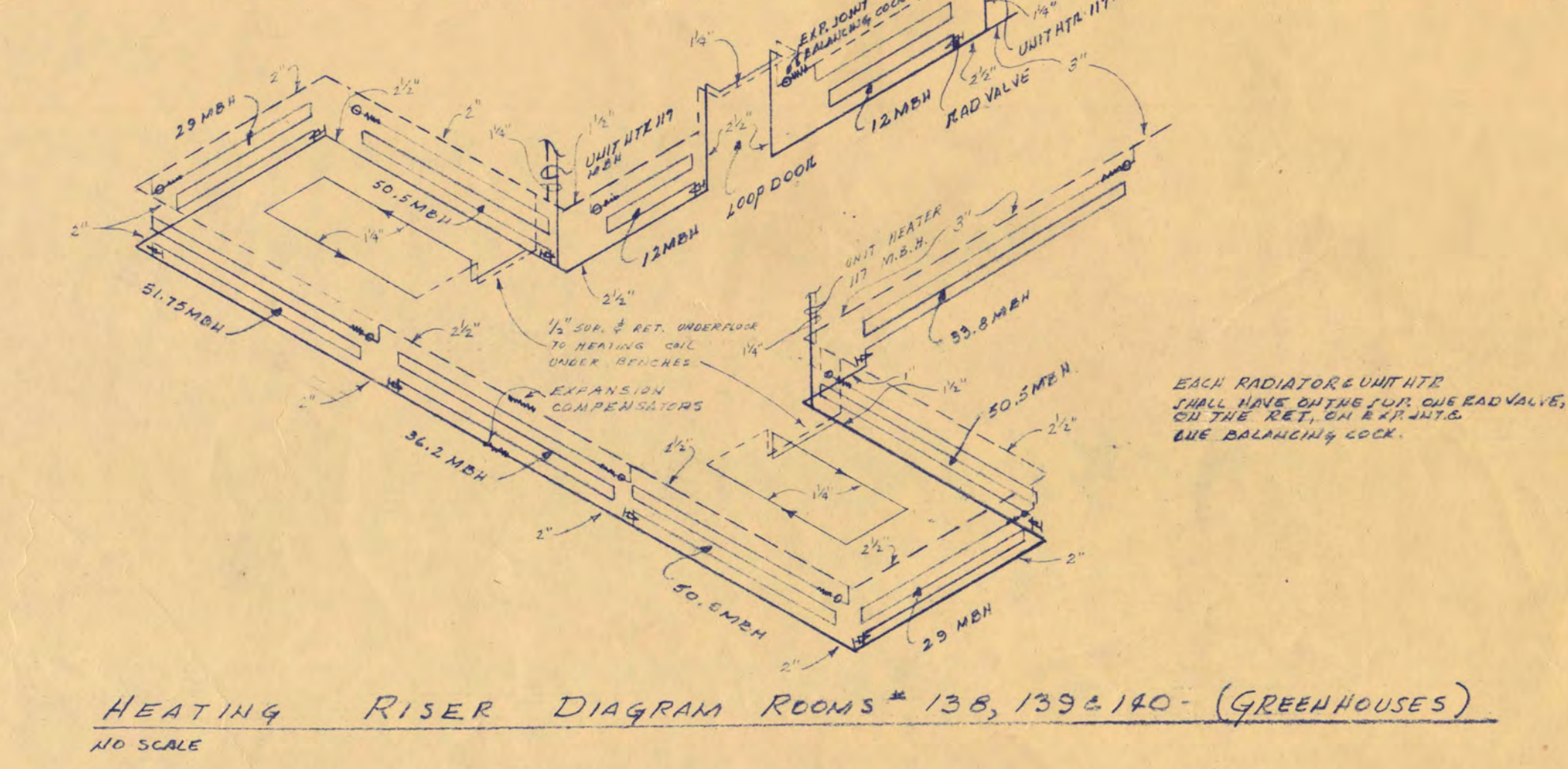
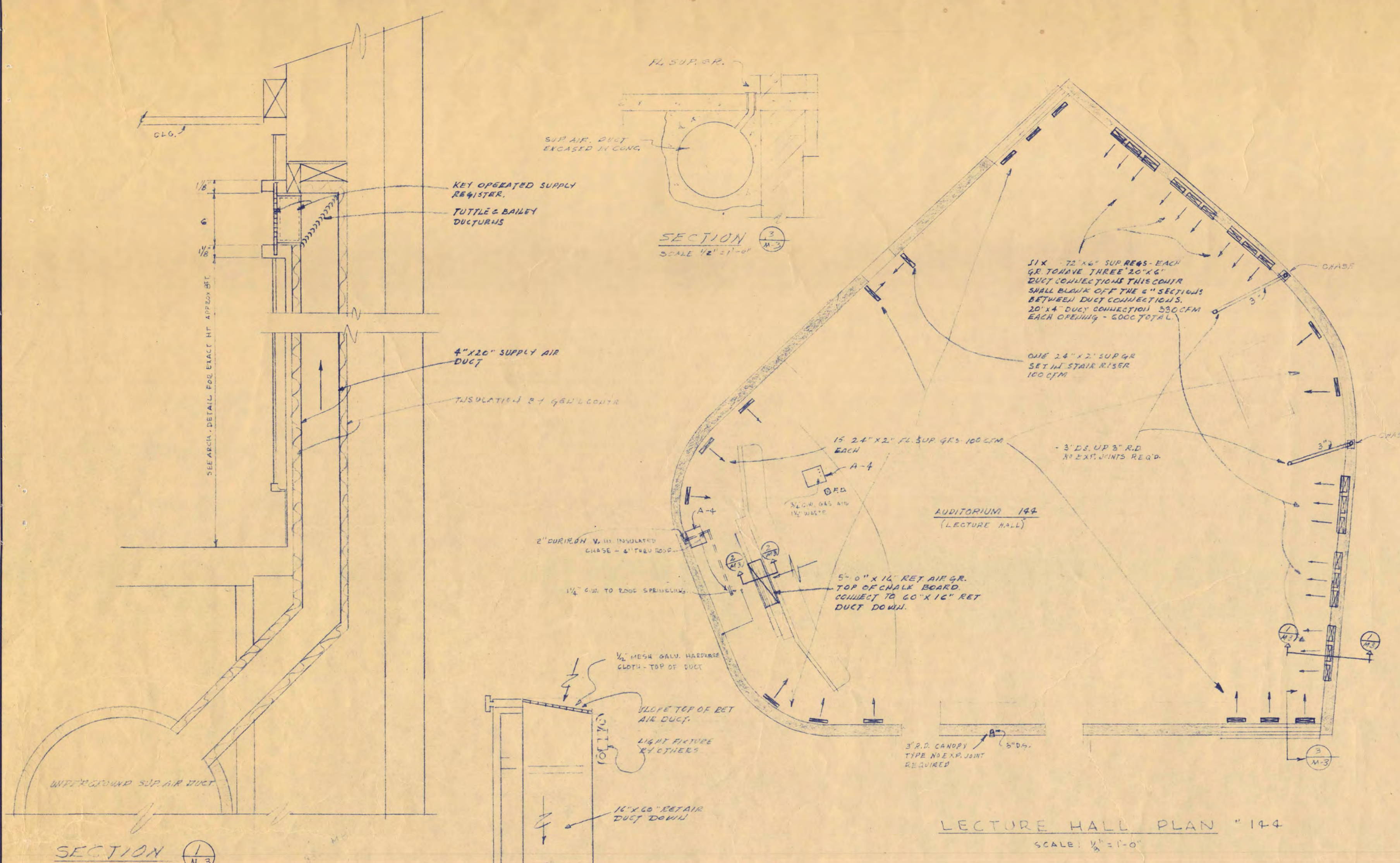
SCIENCE AND MATHEMATICS BUILDING ST. CLOUD STATE COLLEGE ST. CLOUD, MINNESOTA	
DEPARTMENT OF ADMINISTRATION ARCHITECTURAL AND ENGINEERING DIVISION	STATE OF MINNESOTA ST. PAUL, MINNESOTA
A.J. NELSON, STATE ARCHITECT	
TRAYNOR AND HERMANSON, ARCHITECTS SAUBERMAN AND MOORE, INC. CONSULTING ENGINEERS JOHNSTON SAUBERMAN CO. STRUCTURAL ENGINEERS	
DATE JULY 15, 1958	APPROVED BY PRESIDENT ST. CLOUD STATE COLLEGE
DRAWN BY C.D.J.	APPROVED BY STATE COLLEGE BOARD
CHECKED BY [Signature]	APPROVED BY COMMISSIONER OF ADMINISTRATION [Signature]
ST. CLOUD, MINN. STATE PROJECT NUMBER 1600	SHEET NO. M-1 OF 2



- A - CONCRETE
- B - CONCRETE IN PAIRS
- C - HOT WATER HEATER
- D - STEAMING TANK
- E - PRESSURE REDUCING VALVES
- F - PRESSURE REDUCING VALVES
- G - TEMPERATURE REGULATORS
- H - HOT WATER HEATER
- I - HOT WATER HEATER
- J - HOT WATER HEATER
- K - CONDENSATE METER
- L - CONDENSATE METER
- M - CONDENSATE METER
- N - CONDENSATE METER
- O - CONDENSATE METER
- P - CONDENSATE METER
- Q - CONDENSATE METER
- R - CONDENSATE METER
- S - CONDENSATE METER
- T - CONDENSATE METER
- U - CONDENSATE METER
- V - CONDENSATE METER
- W - CONDENSATE METER
- X - CONDENSATE METER
- Y - CONDENSATE METER
- Z - CONDENSATE METER

SCIENCE AND MATHEMATICS BUILDING		ST. CLOUD STATE COLLEGE	
DEPARTMENT OF ADMINISTRATION		STATE OF MINNESOTA	
ROOM 120 STATE CAPITOL BUILDING		ST. PAUL, MINNESOTA	
ARCHITECTURAL AND ENGINEERING DIVISION		A. J. NELSON, STATE ARCHITECT	
TRAYNOR AND HERMANSON, ARCHITECTS		ST. CLOUD, MINN.	
DATE		BY PAUL HINN	
APPROVED BY PRESIDENT ST. CLOUD STATE COLLEGE		MINNEAPOLIS, MINN.	
APPROVED BY STATE COLLEGE BOARD		M-2	
APPROVED BY COMMISSIONER OF ADMINISTRATION		OF 1	
AN AUTHORIZED SIGNATURE		STATE PROJECT	
S.P.G.		NUMBER	
		1600	

ITEM NO.	DESCRIPTION	QTY	SIZE	MATERIAL	REMARKS
1	TABLE	1	36" X 72"	STEEL	CONNECT TO W. RACKET, 1" DIA. COIL, 1" DIA. COIL, 1" DIA. COIL
2	TABLE	1	36" X 72"	STEEL	CONNECT TO W. RACKET, 1" DIA. COIL, 1" DIA. COIL, 1" DIA. COIL
3	TABLE	1	36" X 72"	STEEL	CONNECT TO W. RACKET, 1" DIA. COIL, 1" DIA. COIL, 1" DIA. COIL
4	TABLE	1	36" X 72"	STEEL	CONNECT TO W. RACKET, 1" DIA. COIL, 1" DIA. COIL, 1" DIA. COIL
5	TABLE	1	36" X 72"	STEEL	CONNECT TO W. RACKET, 1" DIA. COIL, 1" DIA. COIL, 1" DIA. COIL
6	TABLE	1	36" X 72"	STEEL	CONNECT TO W. RACKET, 1" DIA. COIL, 1" DIA. COIL, 1" DIA. COIL
7	TABLE	1	36" X 72"	STEEL	CONNECT TO W. RACKET, 1" DIA. COIL, 1" DIA. COIL, 1" DIA. COIL
8	TABLE	1	36" X 72"	STEEL	CONNECT TO W. RACKET, 1" DIA. COIL, 1" DIA. COIL, 1" DIA. COIL
9	TABLE	1	36" X 72"	STEEL	CONNECT TO W. RACKET, 1" DIA. COIL, 1" DIA. COIL, 1" DIA. COIL
10	TABLE	1	36" X 72"	STEEL	CONNECT TO W. RACKET, 1" DIA. COIL, 1" DIA. COIL, 1" DIA. COIL
11	TABLE	1	36" X 72"	STEEL	CONNECT TO W. RACKET, 1" DIA. COIL, 1" DIA. COIL, 1" DIA. COIL
12	TABLE	1	36" X 72"	STEEL	CONNECT TO W. RACKET, 1" DIA. COIL, 1" DIA. COIL, 1" DIA. COIL
13	TABLE	1	36" X 72"	STEEL	CONNECT TO W. RACKET, 1" DIA. COIL, 1" DIA. COIL, 1" DIA. COIL
14	TABLE	1	36" X 72"	STEEL	CONNECT TO W. RACKET, 1" DIA. COIL, 1" DIA. COIL, 1" DIA. COIL
15	TABLE	1	36" X 72"	STEEL	CONNECT TO W. RACKET, 1" DIA. COIL, 1" DIA. COIL, 1" DIA. COIL
16	TABLE	1	36" X 72"	STEEL	CONNECT TO W. RACKET, 1" DIA. COIL, 1" DIA. COIL, 1" DIA. COIL
17	TABLE	1	36" X 72"	STEEL	CONNECT TO W. RACKET, 1" DIA. COIL, 1" DIA. COIL, 1" DIA. COIL
18	TABLE	1	36" X 72"	STEEL	CONNECT TO W. RACKET, 1" DIA. COIL, 1" DIA. COIL, 1" DIA. COIL
19	TABLE	1	36" X 72"	STEEL	CONNECT TO W. RACKET, 1" DIA. COIL, 1" DIA. COIL, 1" DIA. COIL
20	TABLE	1	36" X 72"	STEEL	CONNECT TO W. RACKET, 1" DIA. COIL, 1" DIA. COIL, 1" DIA. COIL
21	TABLE	1	36" X 72"	STEEL	CONNECT TO W. RACKET, 1" DIA. COIL, 1" DIA. COIL, 1" DIA. COIL
22	TABLE	1	36" X 72"	STEEL	CONNECT TO W. RACKET, 1" DIA. COIL, 1" DIA. COIL, 1" DIA. COIL
23	TABLE	1	36" X 72"	STEEL	CONNECT TO W. RACKET, 1" DIA. COIL, 1" DIA. COIL, 1" DIA. COIL
24	TABLE	1	36" X 72"	STEEL	CONNECT TO W. RACKET, 1" DIA. COIL, 1" DIA. COIL, 1" DIA. COIL
25	TABLE	1	36" X 72"	STEEL	CONNECT TO W. RACKET, 1" DIA. COIL, 1" DIA. COIL, 1" DIA. COIL
26	TABLE	1	36" X 72"	STEEL	CONNECT TO W. RACKET, 1" DIA. COIL, 1" DIA. COIL, 1" DIA. COIL
27	TABLE	1	36" X 72"	STEEL	CONNECT TO W. RACKET, 1" DIA. COIL, 1" DIA. COIL, 1" DIA. COIL
28	TABLE	1	36" X 72"	STEEL	CONNECT TO W. RACKET, 1" DIA. COIL, 1" DIA. COIL, 1" DIA. COIL
29	TABLE	1	36" X 72"	STEEL	CONNECT TO W. RACKET, 1" DIA. COIL, 1" DIA. COIL, 1" DIA. COIL
30	TABLE	1	36" X 72"	STEEL	CONNECT TO W. RACKET, 1" DIA. COIL, 1" DIA. COIL, 1" DIA. COIL

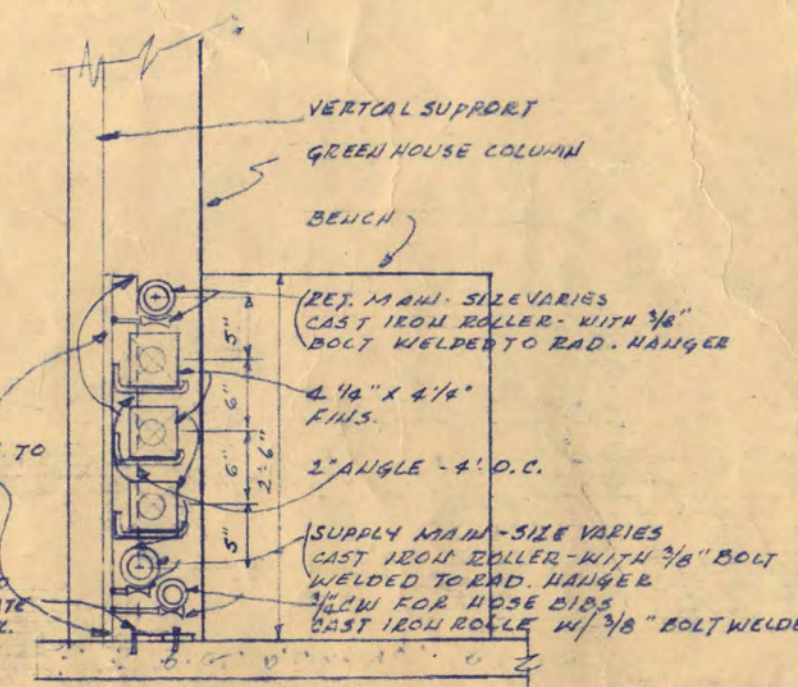


FIN PIPE RADIATION SCHEDULE

TYPE	PIPE SIZE	NO. RADIATORS	AREA	COVER	WATTAGE
A	3/4"	2	48	1.00	2,880
B	1/2"	1	24	1.00	1,440
C	3/8"	2	48	1.00	1,728
D	1/4"	1	24	1.00	720
E	3/16"	3	72	1.00	2,160

BOOSTER COIL SCHEDULE

NUMBER	SIZE	QTY	WATTAGE
1	1/2"	2	2,880
2	3/8"	1	1,440
3	1/4"	2	720
4	3/16"	3	2,160



SCIENCE AND MATHEMATICS BUILDING
ST. CLOUD STATE COLLEGE
ST. CLOUD, MINNESOTA

DEPARTMENT OF ADMINISTRATION
ROOM 120 STATE CAPITOL BUILDING
ARCHITECTURAL AND ENGINEERING DIVISION
STATE OF MINNESOTA
ST. PAUL, MINNESOTA

AJ. NELSON, STATE ARCHITECT

TRAYNOR AND HERMANSON, ARCHITECTS
1000 MARSHALL AVENUE
MINNEAPOLIS, MINN.

JOHNSON EARLHAM CO. STRUCTURAL ENGINEERS
1000 MARSHALL AVENUE
MINNEAPOLIS, MINN.

DATE: JULY 15, 1938
APPROVED BY: PRESIDENT ST. CLOUD STATE COLLEGE
APPROVED BY: STATE COLLEGE BOARD
DRAWN BY: [Signature]
CHECKED BY: [Signature]
APPROVED BY: COMMISSIONER OF ADMINISTRATION
AN AUTHORIZED SIGNATURE

SHEET NO. M-3 OF 7
STATE PROJECT NUMBER 2600