

CL 4TH AVE. SOUTH

8TH STREET SOUTH

15' STORM SEWER

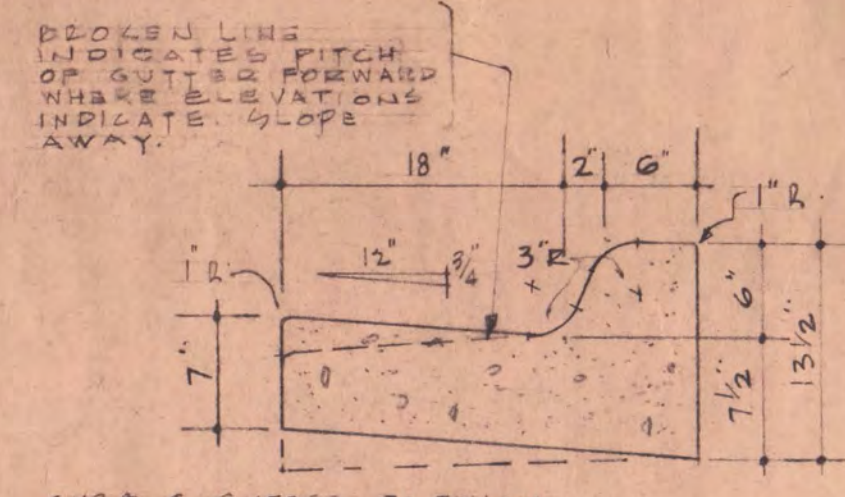
12' SAN SEWER

12' WATER MAIN

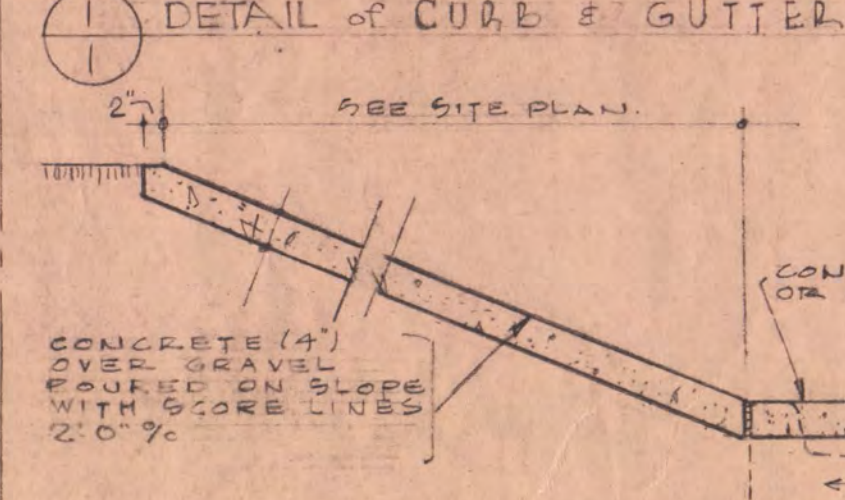
CL 3RD AVE. SOUTH

12' STORM SEWER

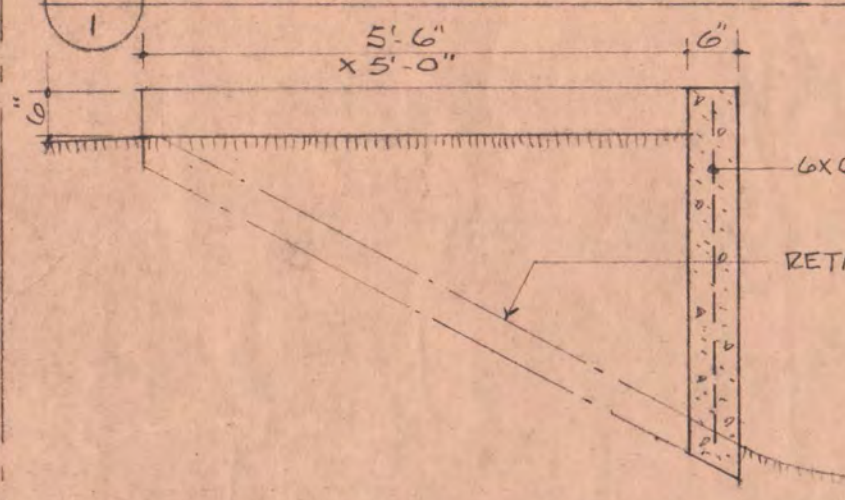
9TH STREET SOUTH



1 DETAIL OF CURB & GUTTER



2 DET. CONC. TERRACE RETAINED



3 CONC. TREE PROTECTOR

DETAIL NUMBER LEGEND

1	DETAIL NUMBER	5	ROOM NUMBER
2	SHEET NUMBER WHERE DRAWN	6	DOOR NUMBER
3	DETAIL OR SECTION NUMBER	6/17	HARDWARE GROUP
4	DIRECTION		DOOR TYPE
	SHEET NUMBER WHERE DRAWN		

MATERIAL LEGEND

[Pattern]	CONCRETE	[Pattern]	STEEL
[Pattern]	BRICK	[Pattern]	BLOCKING
[Pattern]	CONCRETE BLOCK	[Pattern]	FINISH WOOD
[Pattern]	CERAMIC GLAZED TILE	[Pattern]	PLYWOOD
[Pattern]	PLASTER	[Pattern]	GRANITE
[Pattern]	RIGID INSULATION	[Pattern]	STEEL STUDS & PLASTER

GRADING LEGEND

103.4	EXISTING ELEVATIONS	32'-6"	NEW ELEVATIONS
-32-	EXISTING CONTOUR	-32-	NEW CONTOUR
	HARD SURFACED AREAS TO BE REMOVED (CONCRETE, ASPHALT, GRANITE ETC.)	#10	TEST BORINGS
	LIGHTS & POLES		
(7)	TREES TO REMAIN	(8)	TREES TO BE REMOVED
1032.00', 1032'-0", 1032', 32.00', 32'-0", & 32' ARE ALL EQUAL IN VALUE			

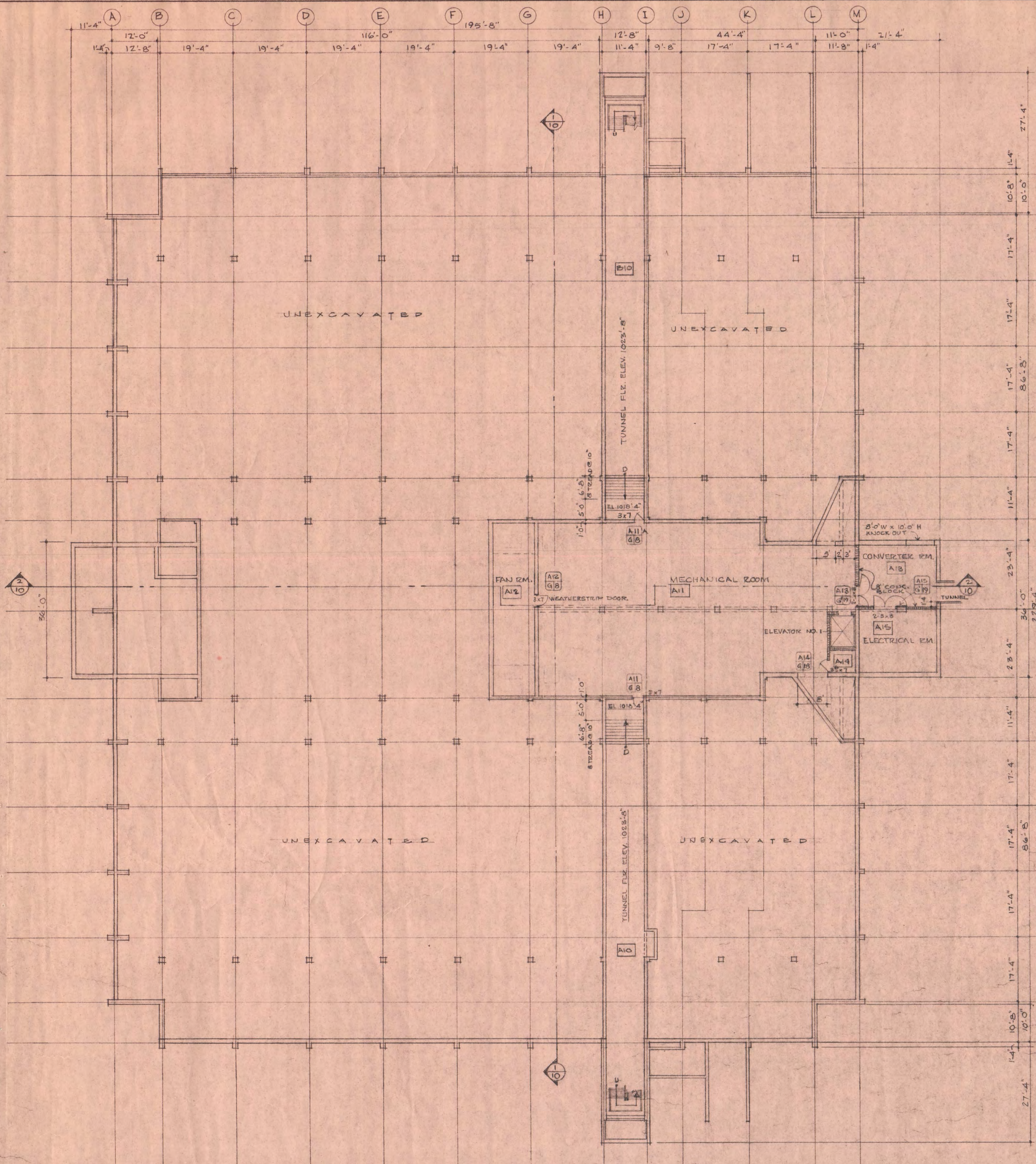
NOTE:
DO NOT CONSTRUCT ANY CONCRETE WALKS, STEPS, OR WALLS FROM THE EAST BUILDING ENTRANCE TO THE CURB OR ANY CONCRETE TERRACE RETAINERS, RAMPS, OR STREET WALK ON THIS EAST SIDE OF THE BUILDING UNTIL THE UNDERGROUND TUNNEL IS CONSTRUCTED.

NOTE:
REMOVE ALL EXISTING BASEMENT FOUNDATIONS & FLOOR SLABS, ALL CONC. & BLACKTOP DRIVES & ALL CONC. & GRANITE WALKS & PATIOS & ALL RETAINING WALLS & STEPS, TREES AS INDICATED, FILL IN ALL MANHOLES, & REMOVE DISCONTINUED 6" SAN. SEWER IN EXIST. ALLEY WHERE NECESSARY.

INDEX TO DRAWINGS

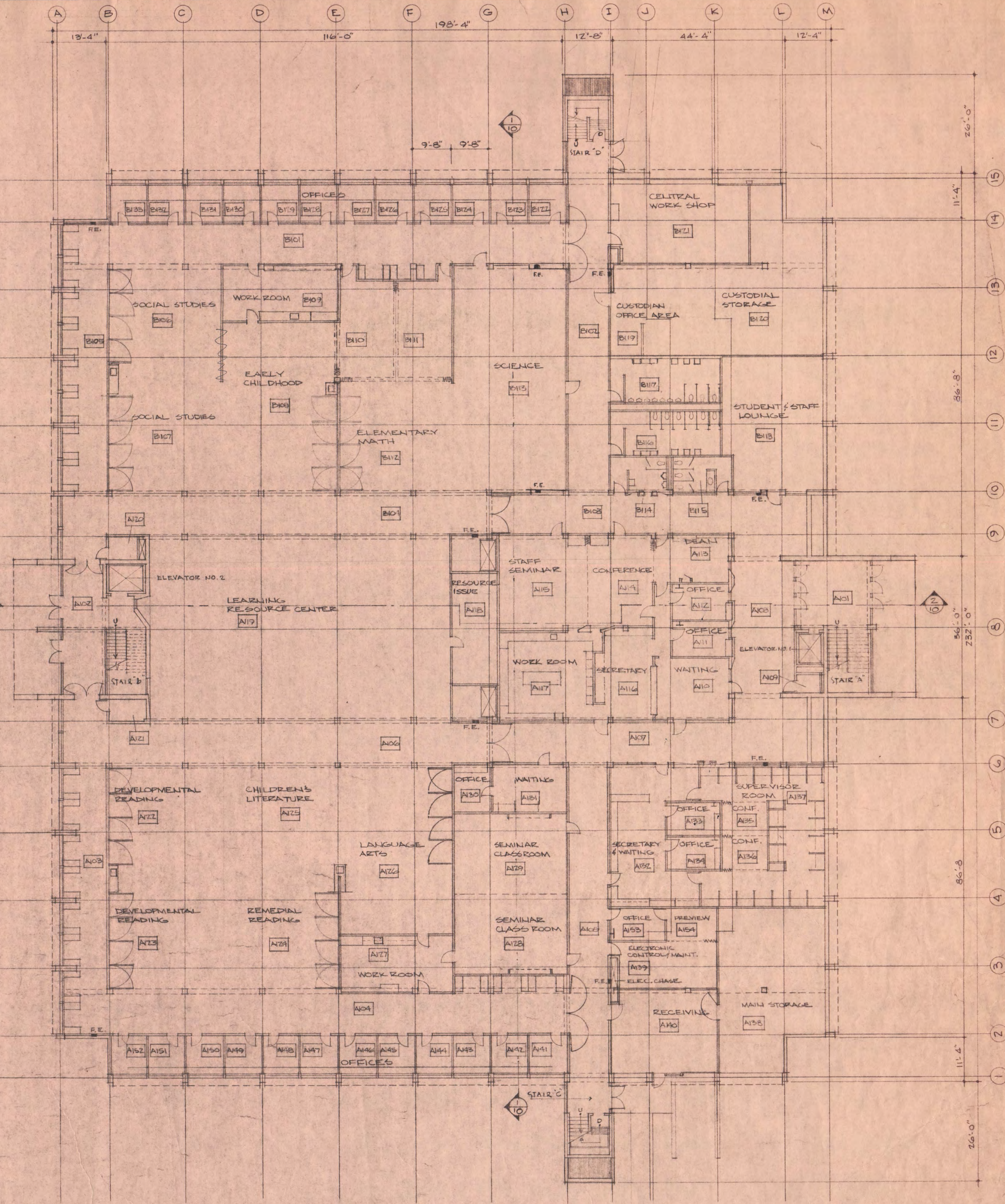
NO.	ARCHITECTURAL DRAWINGS
1.	SITE PLAN & DETAILS
2.	COMPOSITE PLAN, BASEMENT & FIRST FLOOR
3.	COMPOSITE PLAN, SECOND FLOOR & ROOF
4.	ROOM FINISH SCHEDULE & ROOF DETAILS
5.	FIRST FLOOR PLAN UNIT "A"
6.	FIRST FLOOR PLAN UNIT "B", CHALK'D DETAILS
7.	SECOND FLOOR PLAN UNIT "A"
8.	SECOND FLOOR PLAN UNIT "B"
9.	EXT. ELEVATIONS, SECTION & WINDOW DETAILS
10.	SECTIONS THRU BUILDING & EXT. STAIR DETAILS
11.	BUILDING WALL SECTIONS
12.	SECTIONS THRU EAST & WEST ENTRANCES
13.	SECTIONS THRU STAIR "C" & "D"
14.	SECTIONS THRU STAIR "A" & "B" & STAIR DETAILS
15.	SECTIONS THRU ELEVATOR & DETAILS
16.	DOOR SCHEDULE & DETAILS
17.	INTERIOR ELEVATIONS & DETAILS
18.	INTERIOR ELEVATIONS " "
19.	INTERIOR ELEVATIONS " "
20.	INTERIOR ELEVATIONS " "
21.	REFLECTED CEILING PLANS
NO.	STRUCTURAL DRAWINGS
S1.	FOOTING & FOUNDATION PLAN UNIT "A"
S2.	FOOTING & FOUNDATION PLAN UNIT "B"
S3.	FIRST FLOOR FRAMING PLAN, COL. & FTG. SCHEDULE
S4.	SECOND FLOOR FRAMING PLAN UNIT "A"
S5.	SECOND FLOOR FRAMING PLAN UNIT "B"
S6.	ROOF FRAMING PLAN UNIT "A"
S7.	ROOF FRAMING PLAN UNIT "B"
S8.	BEAM & SLAB REINFORCING SCHEDULE
S9.	SECTIONS & DETAILS
S10.	" " " "
S11.	" " " "
S12.	" " " "
S13.	" " " "
NO.	MECHANICAL DRAWINGS
ME-1.	SITE PLAN
M-2.	FOUNDATION PLAN UNIT "A"
M-3.	FOUNDATION PLAN UNIT "B"
M-4.	FIRST FLOOR PLAN UNIT "A" (P & H.)
M-5.	FIRST FLOOR PLAN UNIT "B" (P & H.)
M-6.	SECOND FLOOR PLAN UNIT "A" (P & H.)
M-7.	SECOND FLOOR PLAN UNIT "B" (P & H.)
M-8.	FIRST FLOOR PLAN UNIT "A" (V.)
M-9.	FIRST FLOOR PLAN UNIT "B" (V.)
M-10.	SECOND FLOOR PLAN UNIT "A" (V.)
M-11.	SECOND FLOOR PLAN UNIT "B" (V.)
M-12 THRU M-15.	BASEMENT MECHANICAL ROOM PLAN, SECTIONS, DETAILS, & RISER DIAGRAMS
NO.	ELECTRICAL DRAWINGS
ME-1.	SITE PLAN
E-2.	BASEMENT FLOOR PLAN
E-3.	FIRST FLOOR PLAN UNIT "A" (LIGHTING)
E-4.	FIRST FLOOR PLAN UNIT "A" (POWER & MISC.)
E-5.	FIRST FLOOR PLAN UNIT "B" (LIGHTING)
E-6.	FIRST FLOOR PLAN UNIT "B" (POWER & MISC.)
E-7.	SECOND FLOOR PLAN UNIT "A" (LIGHTING)
E-8.	SECOND FLOOR PLAN UNIT "A" (POWER & MISC.)
E-9.	SECOND FLOOR PLAN UNIT "B" (LIGHTING)
E-10.	SECOND FLOOR PLAN UNIT "B" (POWER & MISC.)
E-11.	RISER DIAGRAMS & DETAILS
THE OFFICIAL SIGNATURES THAT APPEAR ON THIS SHEET SHALL ALSO APPLY TO ALL ARCHITECTURAL, STRUCTURAL, MECHANICAL & ELECTRICAL SHEETS FOR THIS STATE PROJECT NO. 6360150	
I HEREBY CERTIFY THAT THIS PLAN, SPECIFICATION, OR REPORT WAS PREPARED BY ME OR UNDER MY DIRECT SUPERVISION AND THAT I AM A DULY REGISTERED ARCHITECT UNDER THE LAWS OF THE STATE OF MINNESOTA.	
<i>Ernest W. Anderson</i>	DATE: 11/10/97 REG. NO. 2823
<i>Raymond J. Hansen</i>	DATE: 11/10/97 REG. NO. 3715
EDUCATION BUILDING ST. CLOUD STATE COLLEGE	
TRAYNOR, HERMANSON & HAHN ARCHITECTS INC. MINNESOTA	
STRUCTURAL ENGINEERS JOHNSTON & SAHLMAN, INC. MPLS., MINN.	
CONSULTING ENGINEERS GAUSMAN & MOORE, INC. ST. PAUL, MINN.	
DRAWN LLW/RWH	CHECKED FVT
DATE NOV. 10, 1997	OF 21
STATE OF MINNESOTA	
DEPARTMENT OF ADMINISTRATION	
ARCHITECTURAL AND ENGINEERING DIVISION	
ROOM 6-10 ADMINISTRATION BUILDING ST. PAUL 55101	
APPROVED BY: <i>Robert A. Little</i>	APPROVED BY: <i>Paul J. Gausman</i>
COMMISSIONER OF ADMINISTRATION AN AUTHORIZED SIGNATURE	
STATE PROJECT NO. 6360150	

SITE PLAN
1" = 20'-0"



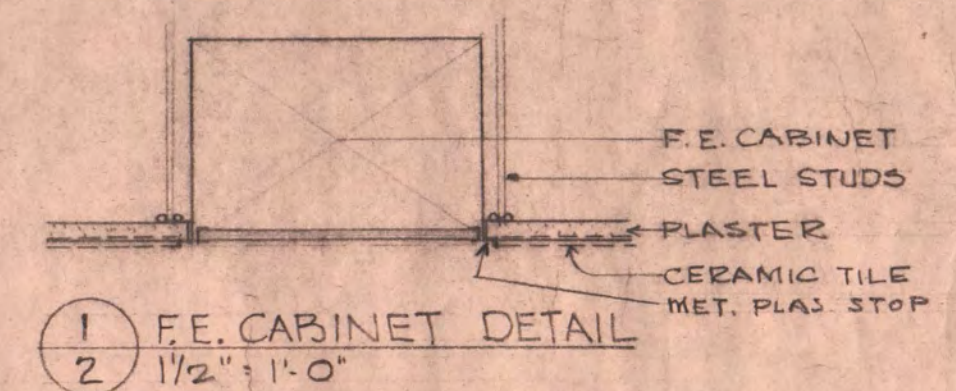
BASEMENT & FOUNDATION PLAN
SCALE 1/16" = 1'-0"

FLOOR ELEVATION 1018'-4"

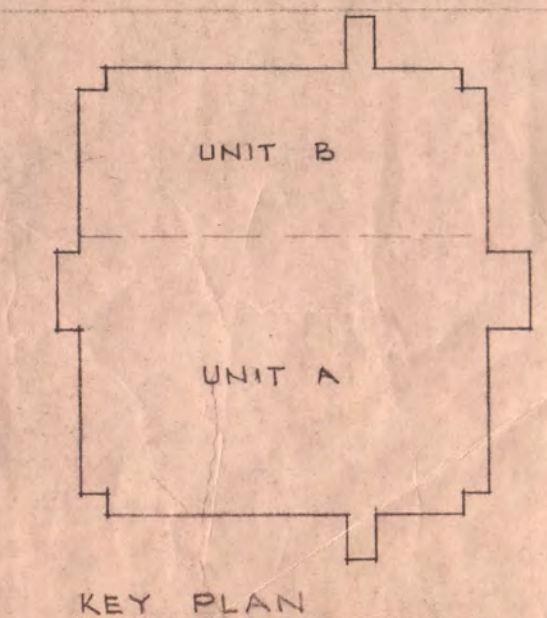


FIRST FLOOR PLAN
SCALE 1/16" = 1'-0"

FLOOR ELEVATION 1023'-5"



F.E. = FIRE EXTINGUISHER + CABINET



EDUCATION BUILDING ST. CLOUD STATE COLLEGE

TRAYNOR, HERMANSON & HAHN ARCHITECTS INC.
ST. CLOUD, MINNESOTA
STRUCTURAL ENGINEERS JOHNSTON & SAHLMAN, INC. MPLS., MINN.
CONSULTING ENGINEERS GAUSMAN & MOORE, INC. ST. PAUL, MINN.

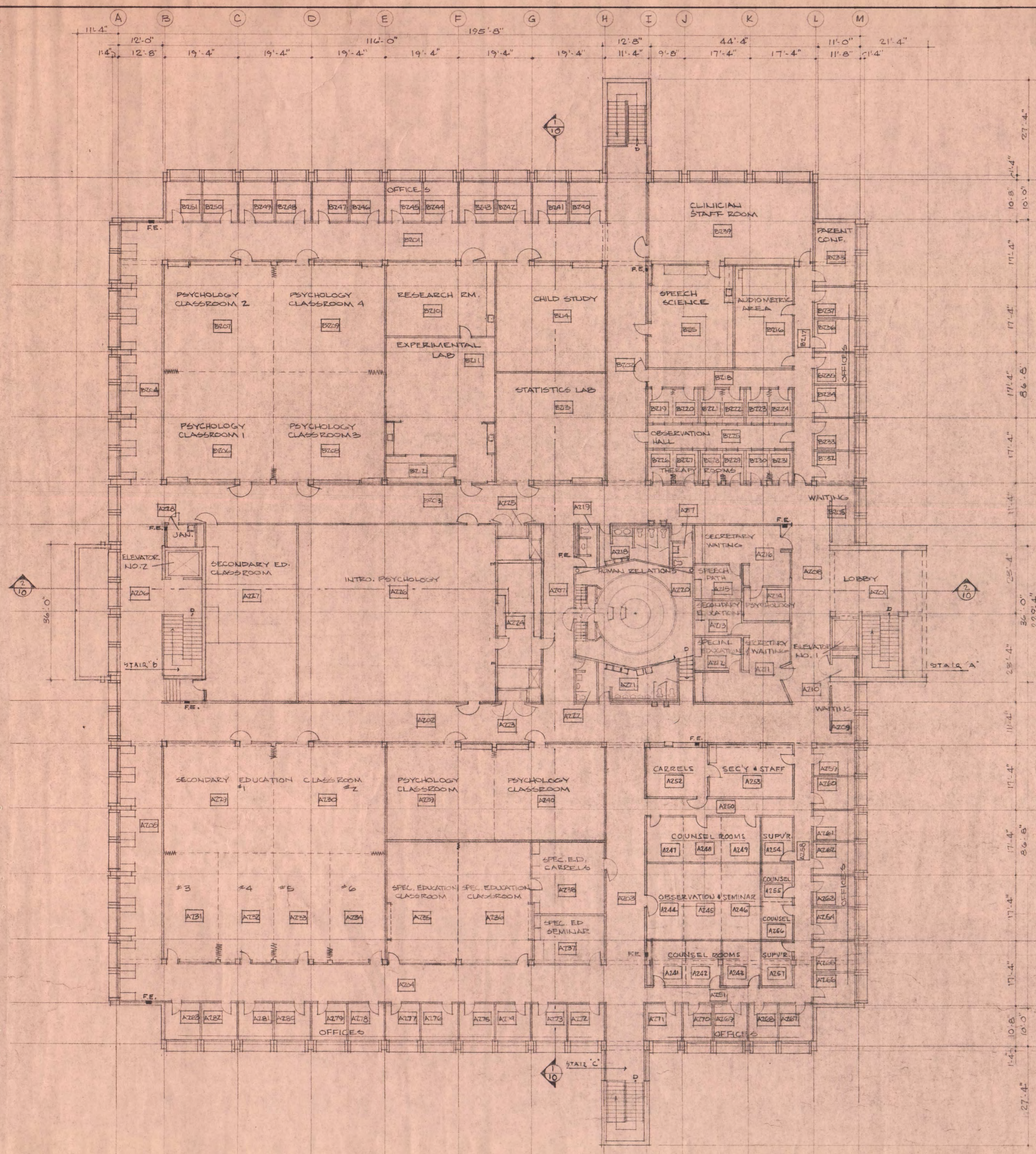
DRAWN JAH LLW CHECKED FVT DATE NOV 10, 1967 OF 21

STATE OF MINNESOTA
DEPARTMENT OF ADMINISTRATION
ARCHITECTURAL AND ENGINEERING DIVISION
ROOM G-10 ADMINISTRATION BUILDING
ST. PAUL 55101

APPROVED BY _____
APPROVED BY _____
APPROVED BY _____

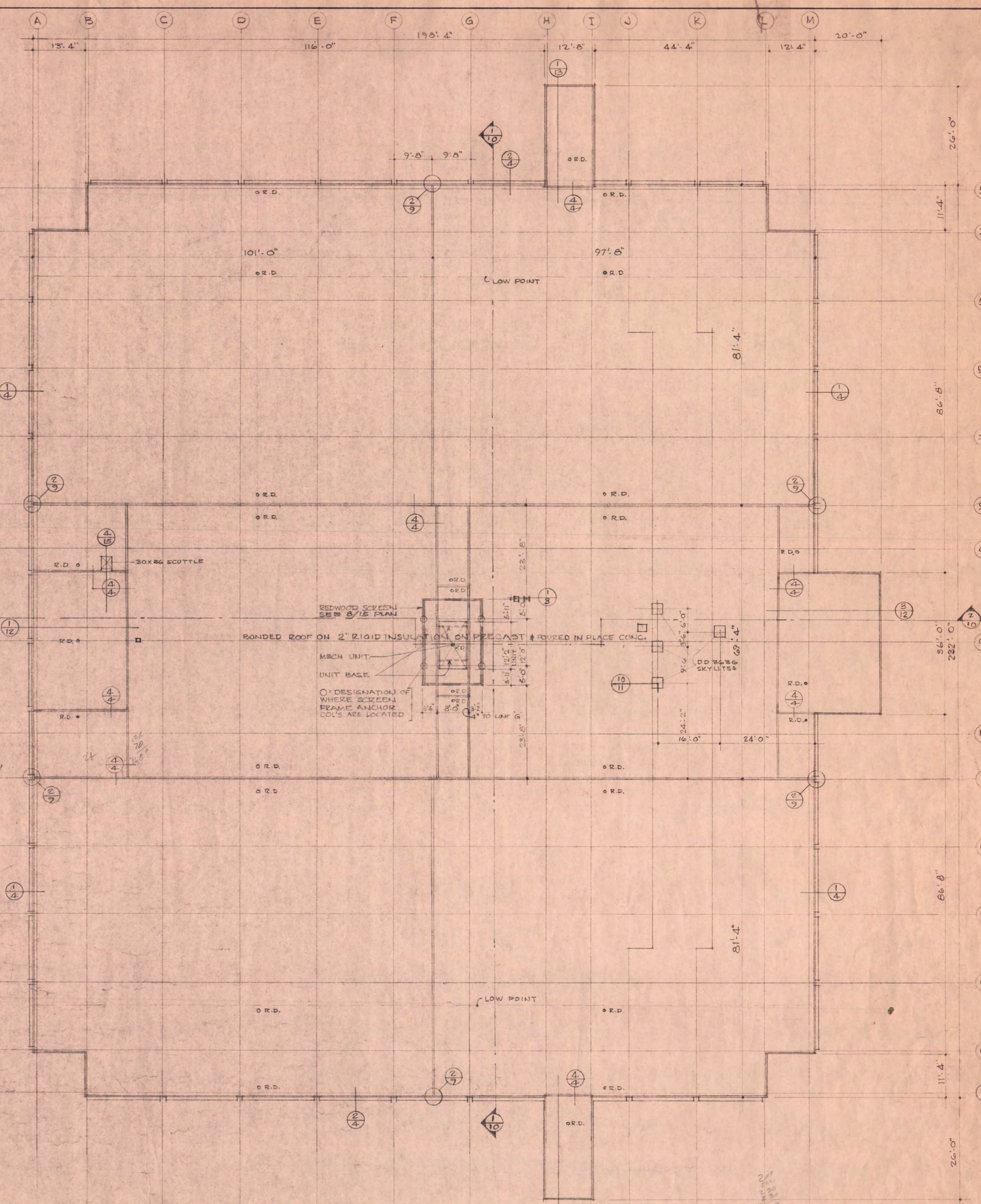
STATE PROJECT NO. 6360150

COMMISSIONER OF ADMINISTRATION
AN AUTHORIZED SIGNATURE



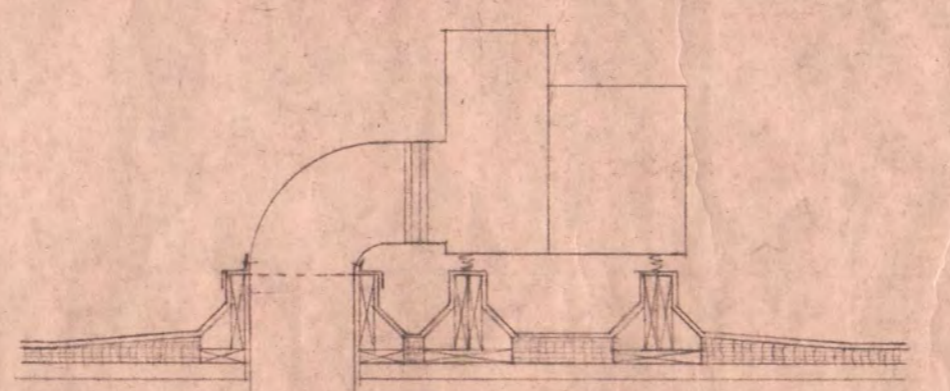
SECOND FLOOR PLAN
SCALE 1/16" = 1'-0"

FLOOR ELEVATION 1047'-8"

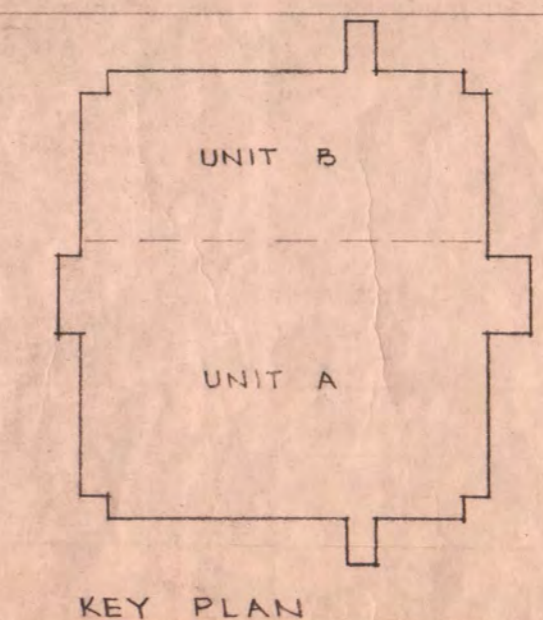


ROOF PLAN
SCALE 1/16" = 1'-0"

TOP OF PRECAST DECK ELEVATION 1061'-4"

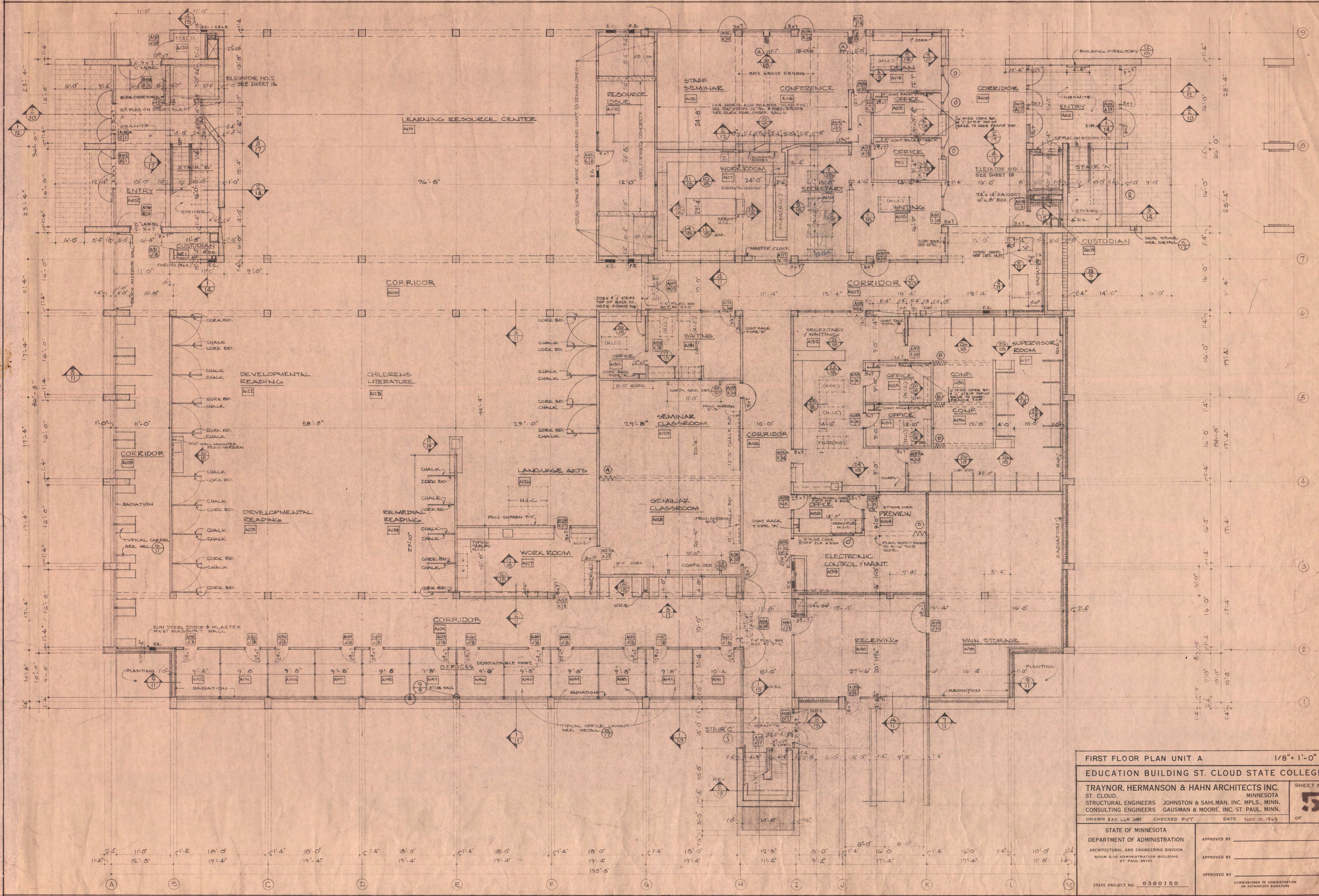


1 FUME HOOD EXH. FAN BASE DET.
3 1/2" = 1'-0" DIM. BY MECH.

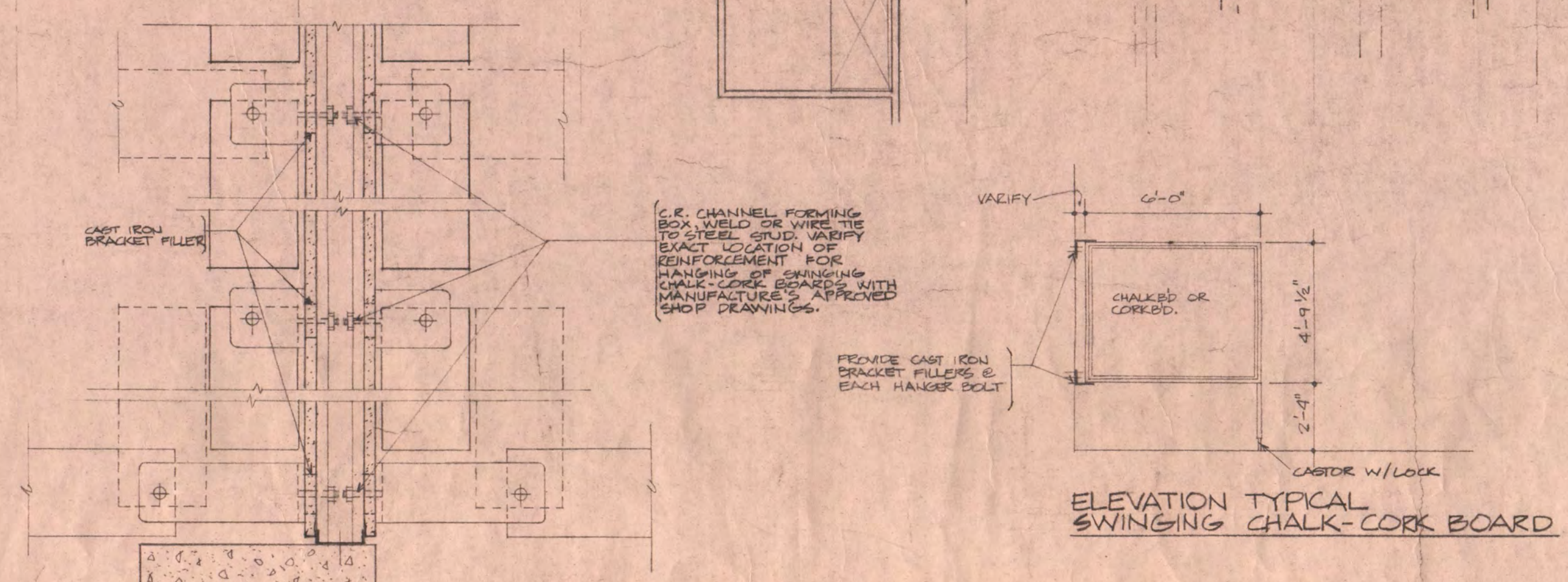
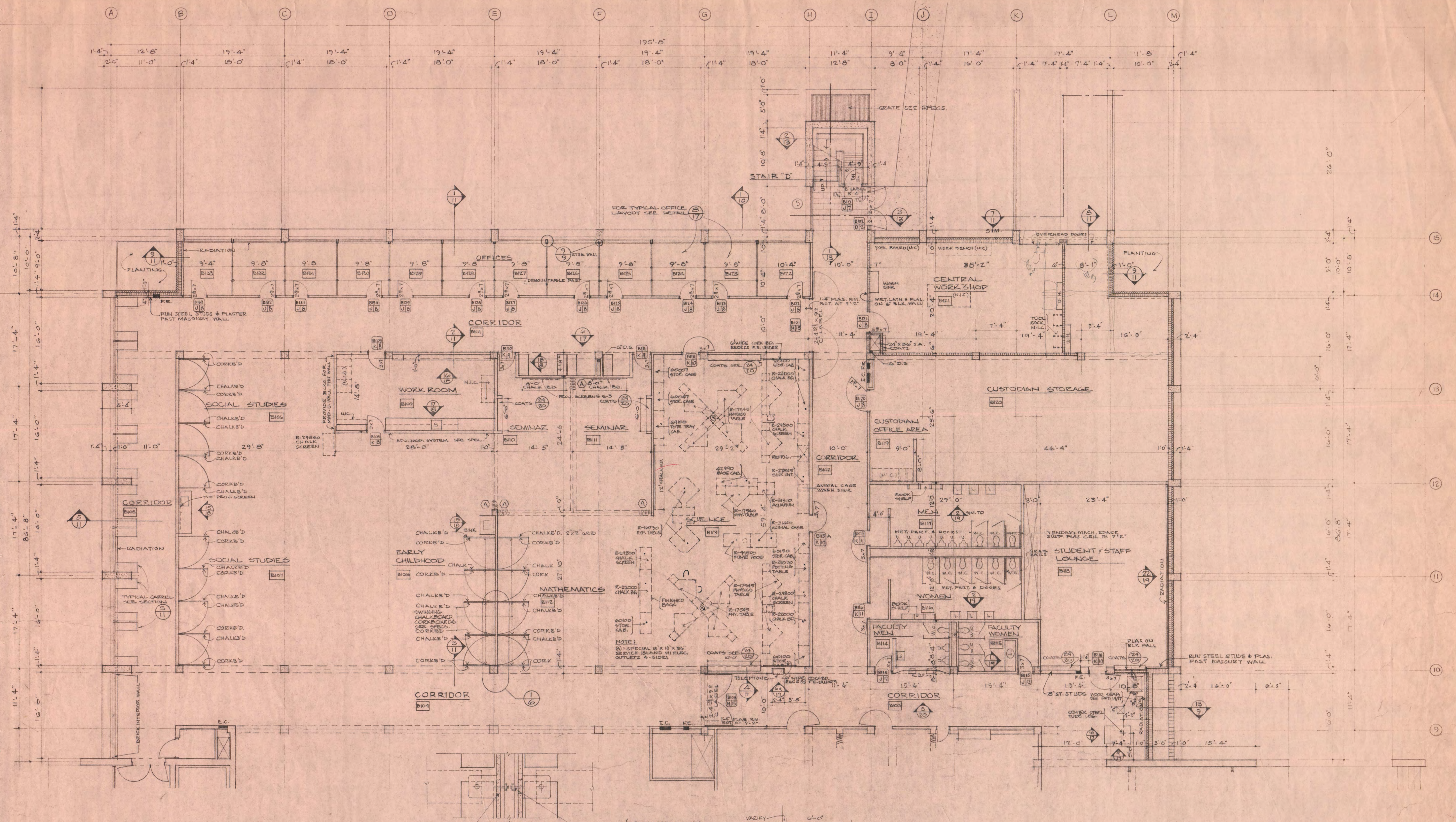


KEY PLAN

EDUCATION BUILDING ST. CLOUD STATE COLLEGE		3
TRAYNOR, HERMANSON & HAHN ARCHITECTS INC. ST. CLOUD, MINNESOTA STRUCTURAL ENGINEERS JOHNSTON & SAHLMAN, INC. MPLS., MINN. CONSULTING ENGINEERS GAUSMAN & MOORE, INC. ST. PAUL, MINN.		
DRAWN JAH LLW CHECKED EJT DATE Nov 10, 1963		OF 21
STATE OF MINNESOTA DEPARTMENT OF ADMINISTRATION ARCHITECTURAL AND ENGINEERING DIVISION ROOM G-10 ADMINISTRATION BUILDING ST. PAUL 55101		APPROVED BY _____ APPROVED BY _____ APPROVED BY _____
STATE PROJECT NO. 6360150		COMMISSIONER OF ADMINISTRATION AN AUTHORIZED SIGNATURE



FIRST FLOOR PLAN UNIT A		1/8" = 1'-0"
EDUCATION BUILDING ST. CLOUD STATE COLLEGE		
TRAYNOR, HERMANSON & HAHN ARCHITECTS INC. ST. CLOUD, MINNESOTA		
STRUCTURAL ENGINEERS JOHNSTON & SAHLMAN, INC. MPLS., MINN.		SHEET NO.
CONSULTING ENGINEERS GAUSMAN & MOORE, INC. ST. PAUL, MINN.		5
DRAWN EAK LLW JAM CHECKED PVT DATE NOV. 10, 1969		OF 21
STATE OF MINNESOTA DEPARTMENT OF ADMINISTRATION ARCHITECTURAL AND ENGINEERING DIVISION ROOM 6-10 ADMINISTRATION BUILDING ST. PAUL 55101		APPROVED BY _____
STATE PROJECT NO. 6360150		APPROVED BY _____
		APPROVED BY _____
		COMMISSIONER OF ADMINISTRATION AN AUTHORIZED SIGNATURE



1 SWINGING CHALK-CORK BOARD DETAILS
 6 1 1/2" = 1'-0"

FIRST FLOOR PLAN UNIT B		1/8" = 1'-0"
EDUCATION BUILDING ST. CLOUD STATE COLLEGE		
TRAYNOR, HERMANSON & HAHN ARCHITECTS INC. ST. CLOUD, MINNESOTA STRUCTURAL ENGINEERS JOHNSTON & SAHLMAN, INC. MPLS., MINN. CONSULTING ENGINEERS GAUSMAN & MOORE, INC. ST. PAUL, MINN.		SHEET NO. 6 OF 21
DRAWN BY: LEW JAH CHECKED: FVT DATE: NOV 10, 1969	STATE OF MINNESOTA DEPARTMENT OF ADMINISTRATION ARCHITECTURAL AND ENGINEERING DIVISION ROOM 9-10 ADMINISTRATION BUILDING ST. PAUL 55101	APPROVED BY: _____ APPROVED BY: _____ APPROVED BY: _____ COMMISSIONER OF ADMINISTRATION AN AUTHORIZED SIGNATURE
STATE PROJECT NO. 6360150		